

University of Nebraska - Lincoln

DigitalCommons@University of Nebraska - Lincoln

Faculty Publications: Materials Research
Science and Engineering Center

Materials Research Science and Engineering
Center

11-5-2004

Disorder-induced depression of the Curie temperature in mechanically milled GdAl_2

Marco Morales Torres

University of Nebraska - Lincoln, mmorales_torres2@unl.edu

D. S. Williams

University of Nebraska - Lincoln

Paul M. Shand

University of Northern Iowa, paul.shand@uni.edu

C. Stark

University of Northern Iowa

Thomas M. Pekarek

University of Northern Florida, tpekarek@unf.edu

See next page for additional authors

Follow this and additional works at: <https://digitalcommons.unl.edu/mrsecfacpubs>

 Part of the [Materials Science and Engineering Commons](#)

Morales Torres, Marco; Williams, D. S.; Shand, Paul M.; Stark, C.; Pekarek, Thomas M.; Yue, Lanping; Petkov, Valeri G.; and Leslie-Pelecky, Diandra, "Disorder-induced depression of the Curie temperature in mechanically milled GdAl_2 " (2004). *Faculty Publications: Materials Research Science and Engineering Center*. 11.

<https://digitalcommons.unl.edu/mrsecfacpubs/11>

This Article is brought to you for free and open access by the Materials Research Science and Engineering Center at DigitalCommons@University of Nebraska - Lincoln. It has been accepted for inclusion in Faculty Publications: Materials Research Science and Engineering Center by an authorized administrator of DigitalCommons@University of Nebraska - Lincoln.

Authors

Marco Morales Torres, D. S. Williams, Paul M. Shand, C. Stark, Thomas M. Pekarek, Lanping Yue, Valeri G. Petkov, and Diandra Leslie-Pelecky

Disorder-induced depression of the Curie temperature in mechanically milled GdAl₂M. A. Morales,¹ D. S. Williams,¹ P. M. Shand,² C. Stark,² T. M. Pekarek,³ L. P. Yue,¹ V. Petkov,⁴ and D. L. Leslie-Pelecky¹¹*Department of Physics and Astronomy and Center for Materials Research and Analysis, University of Nebraska–Lincoln, Lincoln, Nebraska 68588-0111, USA*²*Department of Physics, University of Northern Iowa, 205 Physics Building, Cedar Falls, Iowa 50614, USA*³*Department of Chemistry and Physics, University of North Florida, 4567 St. John's Bluff Road South, Jacksonville, Florida 32224, USA*⁴*Department of Physics, Central Michigan University, 203 Dow Science, Mt. Pleasant, Michigan 48859, USA*

(Received 18 March 2004; revised manuscript received 14 May 2004; published 5 November 2004)

The effect of disorder on the ferromagnetic transition is investigated in mechanically milled GdAl₂. GdAl₂ is a ferromagnet when crystalline and a spin glass when amorphous. Mechanical milling progressively disorders the alloy, allowing observation of the change from ferromagnetic to a disordered magnetic state. X-ray diffraction and pair-distribution-function analysis are used to determine the grain size, lattice parameter, and mean-squared atomic displacements. The magnetization as a function of temperature is described by a Gaussian distribution of Curie temperatures. The mean Curie temperature decreases with decreasing lattice parameter, where lattice parameter serves as a measure of defect concentration. Two different rates of change with lattice parameter are observed: the first, slower rate occurs while grain size is changing, and the grain size is constant in the second regime. The breadth of the Curie temperature distribution is linear with lattice parameter. Milled and annealed GdAl₂ shows that the mean Curie temperature has the same general dependence on lattice parameter as milled, but unannealed GdAl₂, while the breadth of the Curie temperature distribution is different in annealed samples compared to the unannealed materials.

DOI: 10.1103/PhysRevB.70.184407

PACS number(s): 75.75.+a, 75.50.Tt

I. INTRODUCTION

Understanding how different types of disorder affect ferromagnetic transitions is a fundamental and important problem in magnetism. Although the magnetic properties of many nanostructured materials can be explained by length-scale effects (such as grain or particle size), atomic-level disorder also can have a profound effect on magnetic properties. For example, Gd films^{1–3} grown under different conditions (and thus with different levels of structural disorder) can have significantly different Curie temperatures. When the disorder becomes large enough, the ferromagnetic phase can become magnetically glassy.

GdAl₂ is an ideal system for investigating the effects of disorder on the paramagnetic-ferromagnetic (PM-FM) transition. Despite complex magnetic behavior, much of the magnetic behavior of the Laves RAl₂ (where R is a rare earth) compounds can be explained by a Rudermann-Kittel-Kasuya-Yoshida (RKKY) model of indirect exchange. Two different types of disorder must be considered: structural (the deviation of an atom from its expected position) and chemical (whether an atom is on the correct sublattice). Crystalline GdAl₂ is a ferromagnet with the MgCu₂ fcc structure (lattice parameter $a_0=0.7899$ nm), a Curie temperature T_C of 170 K, and a small magnetocrystalline anisotropy.^{4,5} Amorphous GdAl₂ exhibits classic spin-glass behavior—a peak in the zero-field-cooled (ZFC) susceptibility at peak temperature $T_p=60$ K, irreversibility between the ZFC and field-cooled (FC) magnetizations,⁶ and critical scaling of ac susceptibility measurements.⁷ Mechanically milling initially crystalline GdAl₂ produces a spin-glass-like peak, irreversibility between FC and ZFC magnetizations, and a decrease in the magnitude of the ferromagnetic transition.^{8–11} The spin-glass-like peak in $M(T)$, however, occurs 20–40 K higher

than that in amorphous GdAl₂. Zhou and Bakker interpret the low-temperature peak as evidence of a “new class” of spin glass in which milling-induced disorder creates the necessary randomness and frustration,^{8,9} although there remains disagreement on whether the peak is due to a true spin-glass transition.^{12,13} The progressive disordering of GdAl₂ by mechanical milling thus allows us to track how the paramagnetic-ferromagnetic transition changes as the crystalline order is destroyed and how disorder affects the nature of the ferromagnetic phase.

II. SAMPLE FABRICATION

The versatility of mechanical milling makes it a valuable tool for altering a material's structure in a controlled manner. In contrast to mechanical *alloying*, in which two or more separate components are combined into a single homogeneous material, mechanical *milling* transforms an initially crystalline material by introducing defect structures (dislocations and vacancies) and atomic-scale chemical disorder.

Gadolinium chips (99.9% pure) and aluminum pellets (99.99% pure) were arc melted in an argon atmosphere in the proper proportions to produce GdAl₂. The resulting buttons were turned and the procedure repeated several times to ensure homogeneous mixing. The alloy was crushed, milled for two hours in a tungsten-carbide vial under an argon atmosphere to produce a fine powder, and then annealed for 24 h at 800 °C under vacuum to remove milling-induced stress. X-ray diffraction and energy-dispersive x-ray measurements confirm that the powders produced by this process are crystalline and highly ordered, with no tungsten carbide or oxide contamination. This material is referred to as the “0 h” or “unmilled” sample.

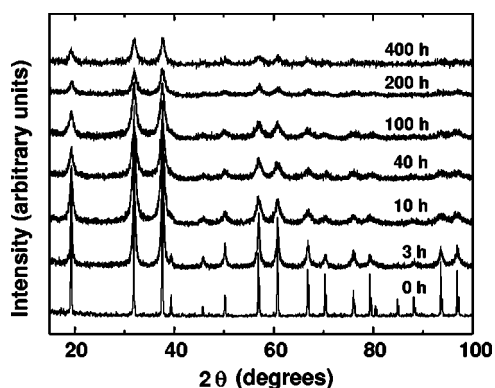


FIG. 1. X-ray diffraction patterns showing the decrease in peak height and peak broadening as the sample is milled.

Two milling techniques were used. In low-intensity milling, the initially crystalline powders were milled in a Fritsch Pulverisette 0 attrition mill. An Al_2O_3 vial was used with a ball-to-powder mass ratio of $\sim 21:1$. Samples were milled for times up to 2500 h, stopping only to remove small amounts of powder for measurements. High-intensity milling was performed in a SPEX 8000 mill with ball-to-powder mass ratios ranging from 0.6:1 to 3:1. 15-min milling periods were alternated with 15-min rest periods to reduce heating, and the vial was turned every 2 h to reduce clumping. Small amounts of powder were removed periodically for structural and magnetic measurements. All sample handling was performed in an Ar atmosphere to prevent oxidation.

III. STRUCTURAL CHARACTERIZATION

The complex dependence of the final structure on ball-to-powder mass ratio, milling/resting times, internal temperature, and other variables means that milling time is not a robust enough parameter to use for comparison of samples from different labs, or even from different runs. Comparing data within a single run, however, is useful for a qualitative overview of the disordering process.

Figure 1 shows x-ray diffraction patterns as functions of milling time for a series of samples produced by high-intensity milling. As is the case for all milling runs, peak intensity decreases and peak width broadens with milling time, with the largest changes occurring during the first 10–20 h of milling. The grain size decreases rapidly from its initial value (which is on the order of microns) and reaches a terminal grain size of ~ 8 nm after about 40 h of high-intensity milling. The process is similar with low-intensity milling, but occurs at a slower rate. The grain size decreases to ~ 15 nm after 2500 h of low-intensity milling.

Measurements were made at the Advanced Photon Source, Argonne National Laboratory to further characterize the structure. Samples—either thin (~ 0.5 mm) plates of powder between Kapton tapes or powder sealed in glass capillary tubes—were measured at beamlines 1-ID (at an x-ray energy of 80 keV) or 11-ID (with an x-ray energy of 115 keV). Data were corrected for instrumental effects and normalized to absolute (electron) units.¹⁴ Bragg diffraction

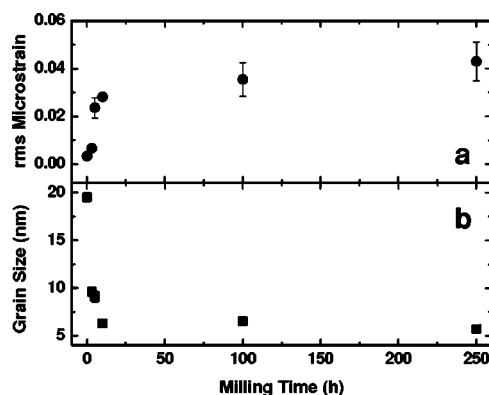


FIG. 2. (a) The root-mean-square microstrain and (b) the grain size as functions of milling time.

peaks were analyzed to determine the rms microstrain and grain size, which are shown in Fig. 2 as functions of milling time. If only grain-size effects are considered in analyzing x-ray diffraction data, different diffraction peaks produce different values for the grain size; however, an analysis that includes grain size and strain^{15,16} produces a consistent mean grain size. Figure 2 shows quantitatively that the largest changes in the grain size and strain in high-energy-milled samples occur during the first hours of milling.

Figure 3 shows the reduced structure function $Q[S(Q) - 1]$ for unmilled GdAl_2 , and GdAl_2 milled for 100 h and 400 h. The decrease in peak intensity with milling and the reduction in the value of Q to which peaks are observed are indicative of the disordering process. The experimental pair distribution functions were fit using PDFFIT¹⁷ to obtain the unit-cell constant a and mean-squared atomic displacements u_{Gd} and u_{Al} . Figure 4 shows the lattice parameter and mean-squared atomic displacements versus milling time for a single milling run. As in all milling runs, a decreases and u_{Gd}

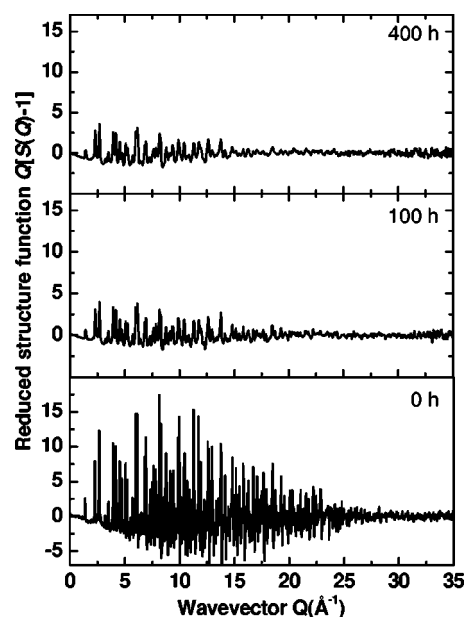


FIG. 3. Reduced structure functions for unmilled GdAl_2 (bottom) and GdAl_2 milled for times of 100 h (middle) and 400 h (top).

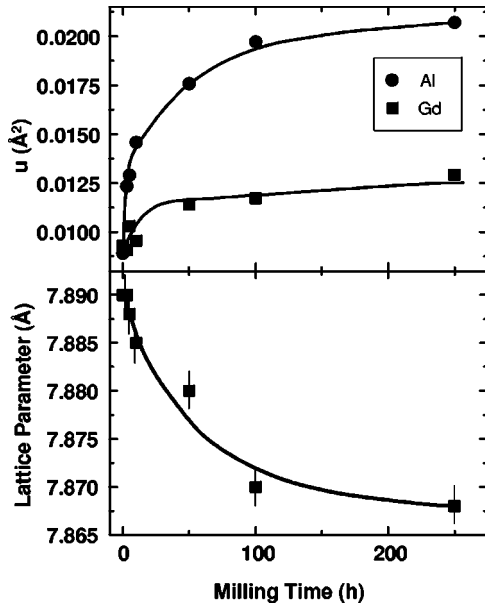


FIG. 4. (a) Mean-squared atomic displacement and (b) lattice parameter as functions of milling time. The lines are guides to the eye.

and u_{Al} increase with milling. The value of u_{Gd} remains smaller than u_{Al} throughout the entire range of disorder.

IV. MAGNETIC MEASUREMENTS

Samples for magnetic measurements were prepared in an Ar atmosphere and sealed in paraffin-filled polyethylene bags to prevent oxidation and rotation of the particles during measurement. Measurements were made in a SQUID magnetometer and a Lakeshore ac susceptometer as functions of field and temperature.

Figure 5(a) shows the ZFC magnetization as a function of temperature for GdAl_2 milled for times from 0 h to 44 h. An expanded view of the transition region is shown in Fig. 5(b). Although a broad peak is observed near 40–60 K, this paper will focus on the changes in the paramagnetic-ferromagnetic transition that are highlighted in Fig. 5(b).

A. The paramagnetic regime

Crystalline and amorphous GdAl_2 obey a Curie-Weiss behavior above their respective transition temperatures.¹⁸ Our unmilled GdAl_2 has an effective moment of $(8.60 \pm 0.04)\mu_{\text{B}}$ and a Curie-Weiss temperature of 171 ± 1 K. Conduction-electron enhancement effects are responsible for the moment being higher than the value of $7.9\mu_{\text{B}}$ expected from Gd^{3+} ions.¹⁹ We have demonstrated previously¹¹ that milling transforms the sample from a single phase that can be fitted by a Curie-Weiss form to a combination of phases that requires a Curie-Weiss *and* a Curie form,

$$\chi(T) = \frac{c_1}{T - \theta} + \frac{c_2}{T}, \quad (1)$$

where the first term describes the FM phase and the second the phase generated by milling. As milling time increases, c_1

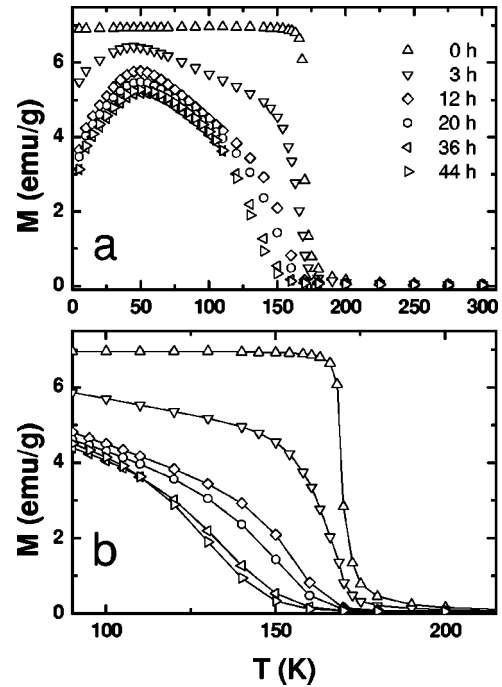


FIG. 5. $M_{\text{ZFC}}(T)$. The lower figure shows details of the behavior near T_C .

decreases and c_2 increases, with the sum $c_1 + c_2$ remaining approximately constant. The enhancement of the second phase at the expense of the first is consistent with the decrease in magnitude of the FM transition relative to the low-temperature peak. That the second phase can be described by a pure Curie form suggests a significant reduction in the average exchange strength in the second phase relative to the first at these temperatures. The fraction of the second component increases with milling time, so the reduction in exchange is at least partially due to milling-induced disorder.

B. The PM-FM transition

Figure 6 (dM/dT vs T) emphasizes the shift and broadening of the PM-FM transition with increasing disorder. The

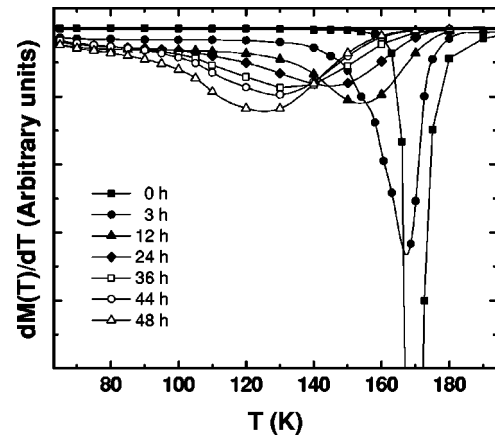


FIG. 6. $dM_{\text{ZFC}}(T)/dT$ for various milling times as a function of temperature. All measurements were made at a field of 100 Oe.

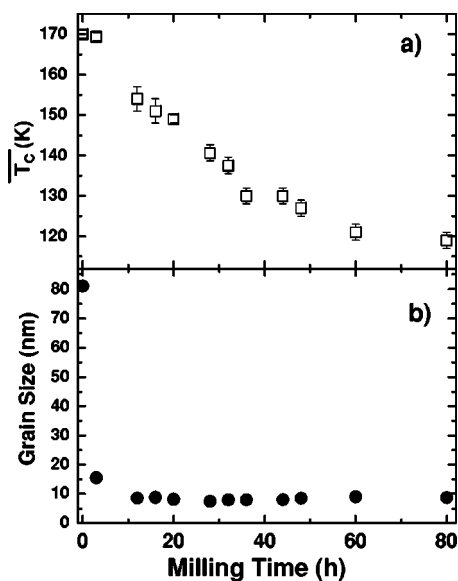


FIG. 7. Changes in (a) \bar{T}_C and (b) grain size with milling time in mechanically milled GdAl₂.

broadening is attributed to the distribution of local environments created by disorder. T_C cannot be determined accurately from the minimum of $dM(T)/dT$, and instead is found by fitting $M(T)$ to a distribution of Curie temperatures:^{20–22}

$$M(T) = m_0 \int_{T_C} \left(\frac{T_C - T}{T_C} \right)^\beta \theta(T_C - T) \rho(T_C) dT_C, \quad (2)$$

where ρ is a Gaussian with breadth ΔT_C and mean value \bar{T}_C , and θ is the Heaviside step function. \bar{T}_C obtained from Eq. (2) is larger than that found from the derivative method, with the difference between the values increasing with increasing disorder and increasing measuring field.²⁰ \bar{T}_C is essentially independent of the measuring field; however, ΔT_C depends on measuring field as $H^{1/\eta}$ where $\eta \sim 1-1.5$ for GdAl₂.²⁰

Two effects shown in Fig. 5 must be explained: the shift in \bar{T}_C and the broadening of the transition with milling time. A possible explanation for the decrease of \bar{T}_C with milling time is finite-size effects due to decreasing grain size. Figure 7 (\bar{T}_C and grain size versus milling time) shows that the most significant changes in \bar{T}_C occur in the region where grain size has become constant, indicating that the depression is not a grain-size effect.

The introduction of vacancies and antisite defects by milling produces a decrease in the lattice parameter (as shown in Fig. 4). The lattice parameter change Δa is the difference between the lattice parameter a and the bulk lattice parameter a_0 ($\Delta a = a_0 - a$). The lattice parameter of mechanically milled GdAl₂ is always smaller than the bulk value, so Δa is positive. GdAl₂ disorders by a quadruple-defect process.^{23,24} The size difference between Gd and Al allows an Al atom to substitute on the Gd sublattice, but not vice versa. The overall MgCu₂ structure is retained because Gd atoms are present

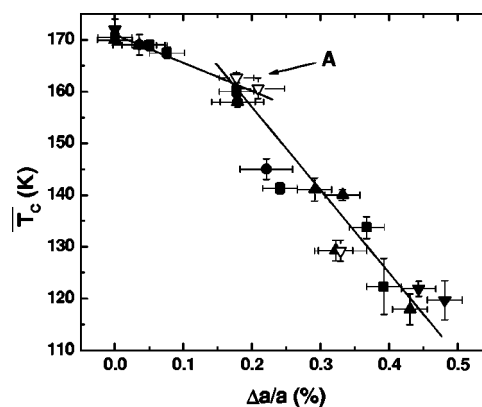


FIG. 8. \bar{T}_C as a function of percent change of lattice parameter. Different symbols represent samples from different milling runs. The open symbols represent samples milled and subsequently annealed. The letter A refers to a group of points with similar values of T_C and a , but very different grain sizes.

as defects or on their own sublattice.²⁵ Preliminary extended x-ray absorption fine-structure (EXAFS) measurements confirm that the primary disorder is in the Gd sublattice, producing a decrease in the mean Gd coordination number and an overall decrease in the lattice parameter.

GdAl₂ exhibits striking differences from other GdX₂ alloys that have been studied in their nanostructured form. In GdPt₂ and GdIr₂, T_C increases as the lattice parameter decreases.²⁶ The difference in the direction of the \bar{T}_C change in GdAl₂ is attributed to the p nature of Al. NMR measurements indicate that the atomic character of the conduction electrons is mainly $5d$ -like for GdAl₂ and $6s$ -like for GdPt₂ and GdRh₂.^{27–29} Modder *et al.* suggest that decreasing the Gd-Gd distance should produce a decrease in T_C .²⁶

In contrast, however, are data from experiments using pressure to decrease the lattice parameter of bulk GdAl₂.^{30,31} T_C increases with decreasing lattice parameter at a rate of $dT_C/dp = +7.1$ K/GPa. The change in T_C is significantly smaller (from roughly 165 K at 0.1 GPa to 167 K at 333 GPa) than the magnitude of the change observed in nanostructured GdAl₂.

Figure 8 shows \bar{T}_C obtained from fitting to Eq. (2) as a function of the fractional change in lattice parameter. All measurements were made in a field of 100 Oe, with the exception of the solid triangles, which were made in a field of 200 Oe. There is no significant difference between values of \bar{T}_C obtained at these two fields.²⁰ The critical exponent β can vary between 0.3 and 0.6 with almost no change in \bar{T}_C . The error bars indicate the range of \bar{T}_C for β from 0.3 to 0.6.

Figure 9 shows the breadth of the distribution ΔT_C from Eq. (2) as a function of $\Delta a/a$. Since ΔT_C can change from 2 to 4 K for measurements made at 100 Oe versus those made at 200 Oe, only measurements made at 100 Oe are shown in Fig. 9. Excluding the open symbols, which represent data from annealed samples, the dependence of ΔT_C on percent change of lattice parameter is roughly linear with a slope of 34 K/% and an intercept of 2.9 K. The nonzero

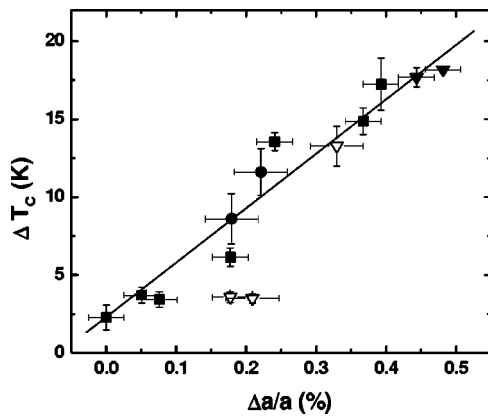


FIG. 9. The dependence of the distribution breadth ΔT_C on percent change in lattice parameter in mechanically milled $GdAl_2$. Different symbols represent samples from different milling runs. Open symbols represent samples that were milled and subsequently annealed.

intercept is likely due to field broadening, which is non-negligible at 100 Oe.²⁰

ac magnetic susceptibility measurements were made to investigate how disorder affects the time-dependent magnetic response. Figure 10 shows a slight frequency dependence in the real part of the ac susceptibility χ' and a more noticeable frequency dependence in the imaginary part of the ac susceptibility χ'' . Figure 11 shows that a dc bias field shifts the PM-FM transition to significantly lower temperatures, as indicated by the position of the shoulder in χ' and the peak in χ'' .

Levin *et al.*⁵ observed a negative χ'' in bulk $GdAl_2$, which we do not observe in mechanically milled $GdAl_2$. They attribute the negative χ'' to domain-wall oscillations, which

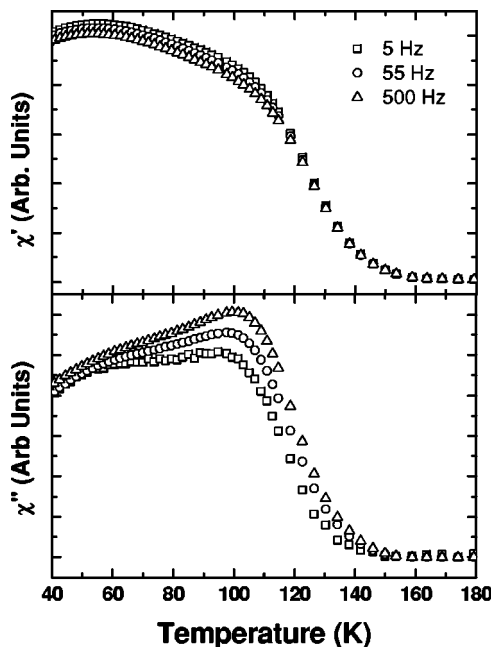


FIG. 10. The real (top) and imaginary (bottom) susceptibilities of a sample milled for 350 h measured at 1 Oe with no dc bias field.

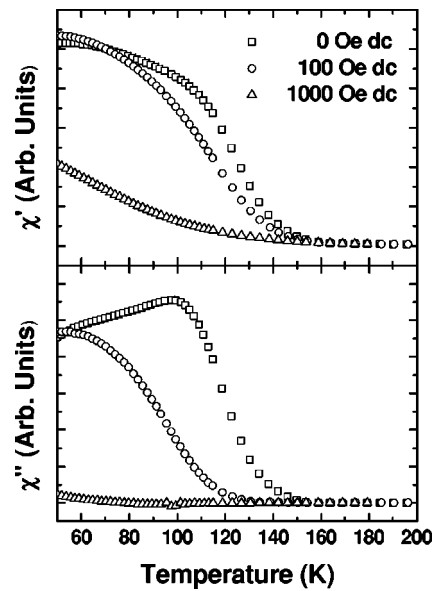


FIG. 11. The dependence of the real (top) and imaginary (bottom) susceptibility as a function of temperature and dc bias field measured at 55 Hz for a sample milled for 350 h.

can occur in soft ferromagnets and even in stronger ferromagnets close to T_C where the coercivity has not become appreciable. We have shown previously that disordered $GdAl_2$ exhibits a 50–70 Oe coercivity even above T_C , which may explain the difference in sign.²⁰

C. Mean lattice parameter versus disorder

Annealing produces grain growth and atomic-level reordering, depending on the annealing conditions. All of the samples shown in Fig. 12 were initially milled for 590 h. M/H vs T is shown in Fig. 12 for unannealed $GdAl_2$, $GdAl_2$ annealed at 400 and 600 °C for 10 min, and annealed at 800 °C for 48 h. Measurements were made in a field of 100 Oe.

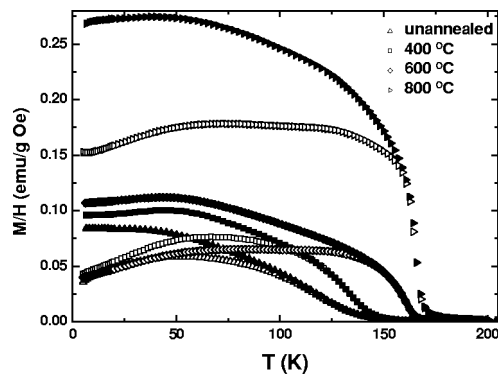


FIG. 12. $\chi(T)$ for $GdAl_2$ milled for 590 h (triangles), then annealed 400 °C (squares), 600 °C, (diamonds), and 800 °C (right-pointing triangles). All annealing times were for 10 min with the exception of the 800 °C anneal, which was for 48 h. Open symbols represent ZFC and closed symbols FC measurements.

Regardless of annealing conditions, the high-temperature data require both a Curie-Weiss and a Curie function [Eq. (1)] for a satisfactory fit. The Curie parameter c_1 (corresponding to the ferromagnetic phase) increases with increasing annealing temperature while c_2 decreases with increasing annealing temperature, and the Curie-Weiss temperature θ increases with increasing annealing temperature.

The most interesting aspect of the annealed samples is how their magnetic behavior compares with unannealed samples, especially in the case where lattice parameters are comparable. The annealed samples (represented by open symbols in Figs. 8 and 9) follow the same general relationship between \bar{T}_C and $\Delta a/a$ as found for the milled samples. The lack of a grain-size effect is emphasized by the cluster marked A in Fig. 8, which contains samples having roughly the same \bar{T}_C and lattice parameter but with grain sizes ranging from 8 to 18 nm.

In contrast, Fig. 9 shows that the breadths of annealed samples do *not* exhibit the same dependence on lattice parameter as their unannealed counterparts. Annealing markedly decreases the transition breadth. Both u_{Gd} and u_{Al} increase with increasing milling time. Annealing increases u_{Gd} , but decreases u_{Al} , indicating that Al atoms move closer to their equilibrium crystalline positions while Gd atoms exhibit overall *increased* disorder after this annealing. For a 500-h milled sample annealed at 600 °C for 10 min, u_{Gd} increases from $0.0110 (\pm 0.0005) \text{ \AA}^2$ to $0.0190 (\pm 0.0005) \text{ \AA}^2$, while u_{Al} decreases from $0.0240 (\pm 0.0005) \text{ \AA}^2$ to $0.0070 (\pm 0.0005) \text{ \AA}^2$. The starting crystalline GdAl₂ has a value $u_{\text{Al}}=0.0080 (\pm 0.0005) \text{ \AA}^2$.

The overall form of $M(T)$ in annealed samples is significantly different from that of samples having the same \bar{T}_C , but made by milling with no annealing (e.g., compare Fig. 12 with Fig. 5). Samples annealed at $T > 400$ °C show a broad plateau between the two transitions that is not evident in unannealed samples.

V. DISCUSSION

A true PM-FM phase transition requires the correlation length to diverge across the entire sample. Defects restrict the divergence of the correlation length at T_C in disordered materials, allowing FM order over only restricted length scales.³² Those length scales, however, need not correspond to a grain size. The strong exchange interactions between spins in a FM means that once a region exceeds ~ 1 nm, ordered spins behave as they would if the correlation length had diverged in the usual sense; however, different parts of the sample order at different temperatures.³³ This picture is reinforced by neutron scattering measurements in chemically disordered (but single crystal) reentrant spin glass Fe_{0.7}Al_{0.3}. These measurements show that the dynamics below T_C (but above the low-temperature peak) are qualitatively different from those of a conventional FM.³² Although there is overall FM order, substantial disorder at finite lengths produces remnant short-range spin correlations. The FM state changes from long-range order to short-range order with increasing disorder. The introduction of disorder in mechanically milled GdAl₂ should have similar effects.

Since the disordering process occurs randomly, different regions of the sample will have different local environments. In particular, ejected Gd atoms are likely to segregate at grain boundaries, forming Gd-rich grain boundary regions and Gd-poor GdAl₂ grains. Annealing a sample milled for 590 h at 800 °C for 48 h (a similar annealing condition as that used to create the starting material) does not reorder the sample back into the original GdAl₂ structure, but instead produces GdAl₂ and Gd₂Al phases. The Gd-rich and Gd-poor regions likely respond differently to annealing, with the Gd-poor GdAl₂ phase retaining a smaller lattice parameter than bulk due to the Gd vacancies.

The dependence of T_C on lattice parameter is *not* a volume effect in the traditional sense, as the change in the lattice parameter does not reflect an overall volume change of the unit cell, but the introduction of vacancies and antisite defects. Figure 8 shows that the decrease of \bar{T}_C with decreasing lattice parameter can be separated into two regimes with different rates. The dividing line corresponds approximately to the point at which grain size reaches a constant value. (Note that differences in milling dynamics between runs means that the terminal grain size can be reached after different milling times in different runs.) The \bar{T}_C depression observed by Zhou's group^{8,9,26} for $\Delta a/a < 0.2\%$ is consistent with our observations: their samples with similar lattice parameters have T_C 's comparable to ours, despite having different grain sizes. Their samples, however, either did not show a ferromagnetic transition for $\Delta a/a >$ about 0.2%, or the transition was so broad as to preclude reliable identification of T_C .

It is likely that the changes in the first regime include effects due to grain refinement and point defects, while the second regime only has contributions from point defects and the different nature of the defects is responsible for the different slopes. Low-intensity milling may allow an extended study of the first regime. The interaction between Gd atoms in GdAl₂ is RKKY,³¹ mediated by 5d electrons:

$$T_C = -\frac{3\pi Z^2 \Gamma^2}{4k_B E_F} G \sum_i F(2k_F r_i) e^{-r_i/\lambda}, \quad (3)$$

where Z is the number of conduction electrons per atom, r_i is the distance between the reference atoms and other atoms, Γ is the exchange integral, G is the de Gennes factor, F is an oscillating function that describes the RKKY interaction, λ is the mean free path, and the sum is taken over all Gd atoms (excluding the reference site).³⁴ A uniform change in volume does not affect the sum over the function F or Z , but does change the electronic band structure and thus leads to the increase in T_C as observed experimentally in bulk GdAl₂.^{30,31}

The milling-induced disorder randomizes the distances between atoms r_i , and introduces vacancies. In the free-electron approximation, k_F is proportional to $n^{1/3}$, where n is the free-electron density. Spatial variations in n (and thus in k_F) will affect the periodicity of the terms in the summation of Eq. (3). Added to this effect is the random displacement of r_i from the lattice points, which further increases the

incoherence of the terms in the summation with respect to each other. Vacancies will decrease the number of terms in the summation. The effect of disorder is thus to *decrease* T_C and spatial variations in disorder produce a range of T_C values that broaden the transition. Theoretical calculations of the electronic structure in $\text{Gd}(\text{Al}_{1-x}\text{M}_x)$ shows that increasing the dopant concentration for nonmagnetic M decreases the density of states at the Fermi level and thus predicts a lower T_C in the presence of substitutional disorder.³⁵ T_C decreases regardless of whether the number of conduction electrons per unit cell increases or decreases and the observed decreases in T_C can be up to 50%, depending on M and the concentration. The mean free path of the conduction electrons decreases when disorder is introduced. Apart from diminishing the strength of the interaction, the effect of the exponential damping is to decrease the relative importance of farther-neighbor interactions. The magnetic behavior increasingly should be dominated by the local environment. One caveat is that the free-electron RKKY theory is likely to be less valid for non- $6s$ conduction electrons, and the specific role of the $5d$ electrons in determining T_C is less clear.

The breadth of the transitions suggests that cooperative effects among grains are small and intergrain exchange coupling is relatively weak at these temperatures, although intergrain interactions may become considerable at lower temperatures. A true PM-FM transition should not exhibit frequency dependence in χ' or χ'' at T_C ;^{36,37} however, the mechanically milled samples do show frequency dependence (weak in χ' and stronger in χ'' , as shown in Fig. 10). While grain size does not appear to determine \bar{T}_C , the dynamics likely *are* affected by the range of FM order. The increasing dc bias field orients spins in the direction of the field (essentially saturating the grains) and suppresses the response to the small ac field. As measurements are made in an increasingly larger bias field, the PM-FM transition in χ' and χ'' almost disappears entirely, as seen in Fig. 11.

The choice of a Gaussian distribution to model the T_C distribution could be questioned. Although the distribution of grain sizes should be log-normal, the lattice parameter change is not directly linked to grain size, so a log-normal distribution is not an obvious default choice. The types of defects introduced by milling favor decreasing the lattice parameter within the grains, which might suggest using a non-symmetric distribution that reflects the asymmetry of the lattice getting smaller and not larger. On the other hand, surface anisotropy can be significant in smaller grains, and this would tend to increase the Curie temperature. Regardless of the functional form used to model the breadth, the raw data clearly show that the annealed samples have a significantly different dependence of their breadth on the lattice parameter, despite having the same dependence of \bar{T}_c on lattice parameter.

The behavior of the breadth of the PM-FM transition offers an additional way to investigate the character of the transition as a function of disorder, especially given the very different behavior of milled and milled/annealed samples having the same \bar{T}_C , but breadths that differ by up to 20 K. Substantive differences in the shapes of $M(T)$ in samples with the same \bar{T}_c and lattice parameter must be investigated

to understand the nature of the disordered phase. The PM-FM transition never disappears entirely in our materials as was seen by Zhou and Bakker. In contrast, their $M(T)$ curves show a very long tail at high temperatures, whereas ours have much steeper slopes. This emphasizes the necessity of atomic-level characterization using a technique such as EXAFS to probe the details of the local environments and correlating these structural details to the magnetic behavior.

VI. CONCLUSIONS

GdAl_2 is an ideal system for studying how chemical and structural disorder affect the magnetic properties of ferromagnets. We have shown that modeling the ferromagnetic-paramagnetic transition is best accomplished by fitting $M(T)$ to a distribution of Curie temperatures, with the mean Curie temperature \bar{T}_C correlated to the lattice parameter, and the distribution breadth ΔT_C reflecting the disorder of the local environment. These two parameters provide a more accurate description of the system than from finding T_C from the minimum of $dM(T)/dT$ and the transition breadth offers significant additional information.

The mean Curie temperature \bar{T}_C exhibits a linear dependence on the change in lattice parameter, but with two different slopes. One slope is characteristic of samples milled in the time period during which both grain size and lattice parameter decrease, and the second, larger slope is found in samples made over the range where there is increasing disorder, but the grain size remains constant. Samples that have been milled and then annealed obey the same general dependence of \bar{T}_C on lattice parameter. In contrast, the distribution breadth ΔT_C is very different in milled and milled/annealed samples, indicating that while \bar{T}_c is determined by lattice parameter, the details of local disorder are reflected by the range of temperatures over which different parts of the sample order.

The combination of mechanical milling and annealing provides a good way to separate effects due to lattice parameter changes from those due to chemical disorder. Additional study is needed, especially in the regime where the primary role of milling is grain refinement, to determine the extent of the difference in the behaviors; however, the present study confirms that GdAl_2 is an excellent model system in which to study further the effects of disorder in magnetic alloys.

ACKNOWLEDGMENTS

We thank R. Lemoine and D. Schmitter for experimental assistance at UNL and S. Shastri at the Advanced Photon Source. We also thank D. Haskel, A.F. Hebard, S. Jaswal, and J.L. Shield for helpful discussions. This research was funded by the National Science Foundation through DMR-9875425 and DMR-0305653, the MRSEC program of the National Science Foundation (DMR-0213808) and the Donors of the American Chemical Society Petroleum Research Fund (PRF#40209-B5M). A.P.S. is supported by the DOE under Contract No. W-31-109-Eng-38.

- ¹D. Weller, S. F. Alvarado, W. Gudat, K. Schroder, and M. Campagna, *Phys. Rev. Lett.* **54**, 1555 (1985).
- ²H. Tang, D. Weller, T. G. Walker, J. C. Scott, C. Chappert, H. Hopster, A. W. Pang, D. S. Dessau, and D. P. Pappas, *Phys. Rev. Lett.* **71**, 444 (1993).
- ³M. Farle, K. Baberschke, U. Stetter, A. Aspelmeier, and F. Gerhardter, *Phys. Rev. B* **47**, 11 571 (1993).
- ⁴R. Kirchmayr and C. A. Poldy, in *Handbook on the Physics and Chemistry of Rare Earths*, edited by J. K. A. Gschneider and L. Eyring (North-Holland, Amsterdam, 1979), Vol. 1, p. 55.
- ⁵E. M. Levin, V. K. Pecharsky, and K. A. Gschneidner, *J. Appl. Phys.* **90**, 6255 (2001).
- ⁶A. P. Malozemoff and J. P. Jamet, *Phys. Rev. Lett.* **39**, 1293 (1977).
- ⁷B. Barbara, A. P. Malozemoff, and Y. Imry, *Phys. Rev. Lett.* **47**, 1852 (1981).
- ⁸G. F. Zhou and H. Bakker, *Phys. Rev. Lett.* **73**, 344 (1994).
- ⁹G. F. Zhou and H. Bakker, *Phys. Rev. B* **52**, 9437 (1995).
- ¹⁰D. L. Leslie-Pelecky, E. M. Kirkpatrick, T. Pekarek, R. L. Schalek, P. Shand, D. S. Williams, and L. Yue, *Mater. Res. Soc. Symp. Proc.* **674**, U5.1 (2001).
- ¹¹D. Williams, P. M. Shand, C. Stark, T. Pekarek, R. Brown, L. Yue, and D. L. Leslie-Pelecky, *J. Appl. Phys.* **93**, 6525 (2003).
- ¹²L. Klein, *Phys. Rev. Lett.* **74**, 618 (1995).
- ¹³G. F. Zhou and H. Bakker, *Phys. Rev. Lett.* **74**, 619 (1995).
- ¹⁴V. Petkov, *J. Appl. Crystallogr.* **22**, 387 (1989).
- ¹⁵A. Gangulee, *J. Appl. Crystallogr.* **7**, 434 (1974).
- ¹⁶P. Ganesan, H. K. Kuo, A. Saavedra, and R. J. DeAngelis, *J. Catal.* **52**, 310 (1978).
- ¹⁷T. Proffen, and S. J. L. Billinge, *J. Appl. Crystallogr.* **32**, 572 (1999).
- ¹⁸T. Mizoguchi, T. R. McGuire, S. Kirkpatrick, and R. J. Gambino, *Phys. Rev. Lett.* **38**, 89 (1977).
- ¹⁹M. Bauer, M. S. S. Brooks, and E. Dormann, *Phys. Rev. B* **48**, 1014 (1993).
- ²⁰D. S. Williams, P. M. Shand, T. M. Pekarek, R. Skomski, V. Petkov, and D. L. Leslie-Pelecky, *Phys. Rev. B* **68**, 214404 (2003).
- ²¹M. Farle, and W. A. Lewis, *J. Appl. Phys.* **75**, 5604 (1994).
- ²²A. Berger, G. Campillo, P. Vivas, J. E. Pearson, S. D. Bader, E. Baca, and P. Prieto, *J. Appl. Phys.* **91**, 8393 (2002).
- ²³G. F. Zhou, H. Yang, and H. Bakker, *Mater. Sci. Forum* **225**, 649 (1996).
- ²⁴G. F. Zhou and H. Bakker, *Mater. Sci. Forum* **225**, 655 (1996).
- ²⁵J. Bakker, I. W. Modder, G. F. Zhou, and H. Yang, *Mater. Sci. Forum* **235–238**, 477 (1997).
- ²⁶I. W. Modder, H. Bakker, and G. F. Zhou, *Physica B* **262**, 141 (1999).
- ²⁷E. Dormann, *J. Magn. Magn. Mater.* **6**, 87 (1977).
- ²⁸E. Dormann and M. Huck, *Z. Phys. B* **27**, 141 (1977).
- ²⁹E. Dormann and K. H. J. Buschow, *Phys. Status Solidi B* **59**, 411 (1973).
- ³⁰S. Jaakkola, *Phys. Lett.* **50A**, 35 (1974).
- ³¹S. M. Jaakkola and M. K. Hänninen, *Solid State Commun.* **36**, 275 (1980).
- ³²W. Bao, S. Raymond, S. M. Shapiro, K. Motoya, B. Fak, and R. W. Erwin, *Phys. Rev. Lett.* **82**, 4711 (1999).
- ³³R. Skomski, *J. Phys.: Condens. Matter* **15**, R841 (2003).
- ³⁴D. C. Mattis, *The Theory of Magnetism. I, Statics and Dynamics* (Springer-Verlag, Berlin, 1988).
- ³⁵M. Magnitskaya, G. Chelkowska, G. Borstel, M. Neumann, and H. Ufer, *Phys. Rev. B* **49**, 1113 (1994).
- ³⁶S. Mukherjee, R. Ranganathan, P. S. Anilkumar, and P. A. Joy, *Phys. Rev. B* **54**, 9267 (1996).
- ³⁷S. F. Fischer, S. N. Kaul, and H. Kronmüller, *Phys. Rev. B* **65**, 064443 (2002).