

May 2006

IDENTIFICATION OF TURKEY BREAST BONES

David Oates

Nebraska Game and Parks Commission, Dave.Oates@ngpc.ne.gov

Follow this and additional works at: <http://digitalcommons.unl.edu/icwdmother>



Part of the [Environmental Sciences Commons](#)

Oates, David, "IDENTIFICATION OF TURKEY BREAST BONES" (2006). *Other Publications in Wildlife Management*. 19.
<http://digitalcommons.unl.edu/icwdmother/19>

This Article is brought to you for free and open access by the Wildlife Damage Management, Internet Center for at DigitalCommons@University of Nebraska - Lincoln. It has been accepted for inclusion in Other Publications in Wildlife Management by an authorized administrator of DigitalCommons@University of Nebraska - Lincoln.

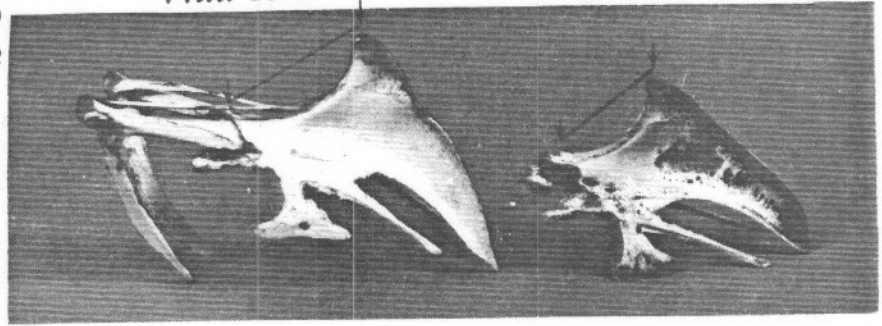
IDENTIFICATION OF TURKEY BREAST BONES

Height and shape of keel differ in domestic and wild turkeys. Wild birds typically have a dip in the keel and no drastic slope change after the dip.

The distance from the lip on the upper edge of the sternum to the tip of the cranial end of the keel is obviously greater in wild than domestic birds.

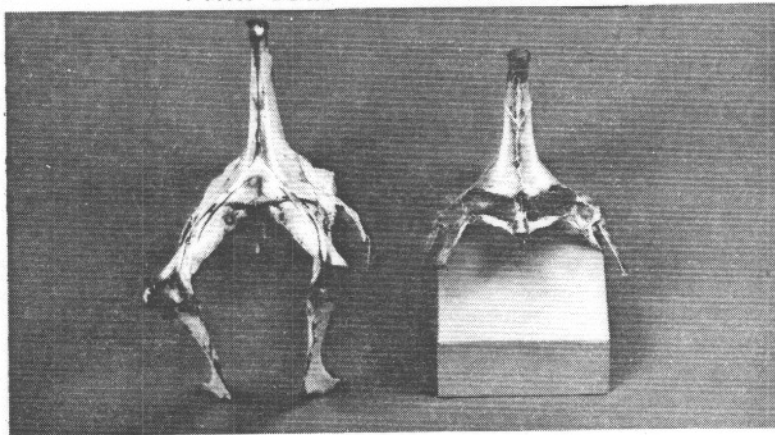
Wild Tom

Domestic Tom



Wild Tom

Domestic Tom



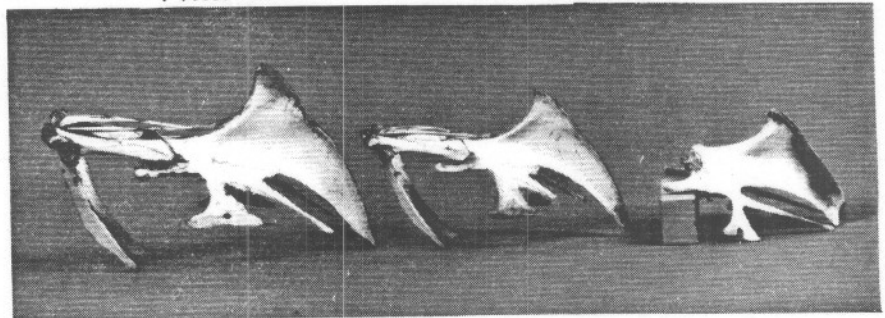
Note that not only the distance between the arrows differs in the figure above, but also the curvature of the slope.

Breadth of the keel is greater on domestic birds, but the height of the keel is greater on wild toms.

The dorsal lateral process is larger on wild birds. Tip of keel is not calcified on store-bought birds.

Wild Tom

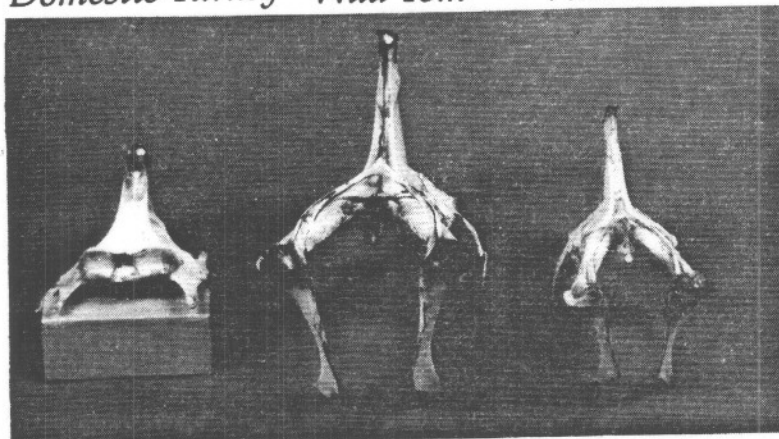
Wild Hen Domestic Turkey



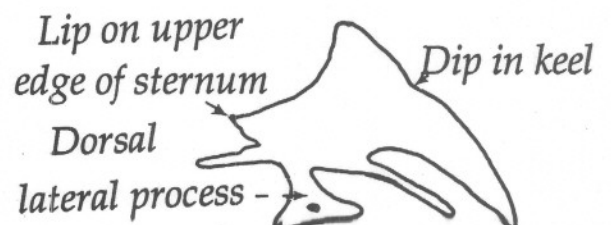
Domestic Turkey

Wild Tom

Wild Hen



Note the lip on the top edge of the sternum in domestic birds. Again, the width of the keel is much greater on domestic turkeys.



Nebraska Game and Parks Commission

Contact: David W. Oates

Forensic and Analytical Specialist