

University of Nebraska - Lincoln

DigitalCommons@University of Nebraska - Lincoln

---

Block & Bridle Student Organization

Animal Science Department

---

1980

## Block and Bridle Annual, 1980

Follow this and additional works at: <https://digitalcommons.unl.edu/animalsciblock>



Part of the [Animal Sciences Commons](#)

---

"Block and Bridle Annual, 1980" (1980). *Block & Bridle Student Organization*. 18.

<https://digitalcommons.unl.edu/animalsciblock/18>

This Article is brought to you for free and open access by the Animal Science Department at DigitalCommons@University of Nebraska - Lincoln. It has been accepted for inclusion in Block & Bridle Student Organization by an authorized administrator of DigitalCommons@University of Nebraska - Lincoln.

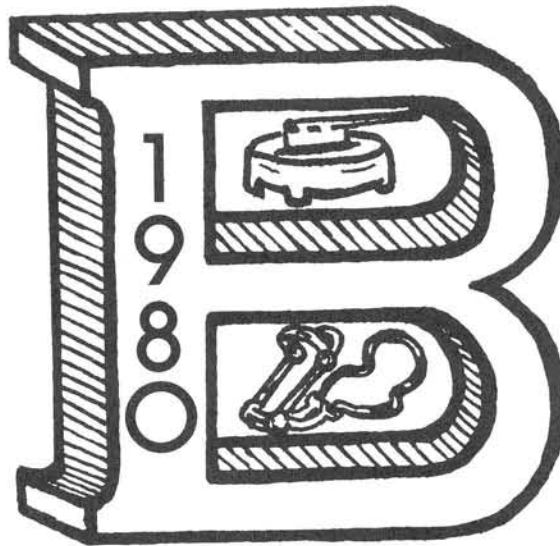


University of Nebraska  
BLOCK PARTY  
1979-80

# THE EMBLEM

The Block & Bridle emblem represents the principles on which the club is built. Character, sincerity, and a moral life are asked of members when they join and are depicted in the straight perpendicular of the "B." The distinct curves of the "B" are symbolic of the social pleasure, mental energy and determination of members.

The meat block represents the material aspects of our life. The bridle stands for the behavior of B&B members, the control over ourselves that we try to maintain, the mannerisms and respect we show toward others, and the way which we treat animals.



## CLUB PURPOSE

On December 2, 1919 student representatives from four animal husbandry clubs met in Chicago, Illinois, and formed the National Block and Bridle Club, the local clubs becoming chapters in the new national organization. Nebraska was a charter chapter along with Iowa, Kansas, and Missouri. During this meeting, the chapters formed a constitution which included a statement of the clubs objectives. They are (1) To promote a higher scholastic standard among students of Animal Husbandry, (2) To promote animal husbandry, especially all phases, of student animal husbandry work in colleges and universities, (3) To bring about a closer relationship among the men pursuing some phase of animal husbandry as a profession.

Membership in the Block and Bidle Club is open to any student of agriculture, on the college level, who has a sincere interest in Animal Science.

## STAFF COMMENTS

It gives us great *relief* to present the 1980 Block and Bridle annual. We spent the usual long hours involved in putting together an annual—hunting for pictures, writing stories, scraping and begging for ads, and drawing little lines in the middle of the night.

A special thanks to the initiates, who did a great job of selling ads.

Thanks to our staff and others who helped, including: Karen Fisher, Cindy Cammack, Sue Kaczor, Dean Lesoing, Kathy Jackson, Mary Bargman, Don Batie, and advisors.

Our condolences to next year's editors.

Deb Hamernik  
Mary Dunn  
Louise Beyer

Annual Editors

# TABLE OF CONTENTS

	Page
Purpose and Emblem .....	inside cover
Animal Science Dept. Chairman Address .....	2
Block & Bridle Presidents' Address .....	3
Portrait Presentation—Honoree .....	4
Visit with the Honoree .....	5
Senior Scholarship Award .....	6
Junior Scholarship Award .....	7
Ads .....	8-9
Animal Science Faculty .....	10
Animal Science Graduate Students .....	11
Animal Science Secretaries .....	12
Ads .....	13-14
Block & Bridle Advisors .....	15
Block & Bridle Officers .....	16
Block & Bridle Executive Committee .....	17
Block & Bridle Members .....	18-19
Block & Bridle Initiates .....	20
Ads .....	21-22
Liaison Committee .....	23
Block & Bridle Seniors .....	24-30
Ads .....	31-32
Activities & Program Calendar .....	33
Honors Banquet .....	34-35
Summer Meetings .....	36
Ads .....	37-38
State Fair Award .....	39
Fall Steak Fry .....	40
Kid's Day .....	41
Little AK-SAR-BEN .....	42-43
Queen Candidates .....	44
Queen & Princess .....	45
Don Ringler Award .....	46
Ads .....	47-48
Ham Sales .....	49
Ag Symposium .....	50
Chapter Meetings .....	51
Christmas Coffee .....	52
Ads .....	53-54
Meats Judging Contest .....	55
Spring Tour .....	56-57
Quadrathalon .....	58
Ads .....	59-60
Spring Picnic .....	61
Quarterhorse Show .....	62-63
Beef Show .....	64-65
Dairy Judging Team .....	66
Senior Livestock Judging Team .....	67
Junior Livestock Judging Team .....	68
Senior Meats Judging Team .....	69
Junior Meats Judging Team .....	70
Livestock Judging Team .....	71
Ads .....	72-75
Index of Ad Subscribers .....	76

# OUR ANIMAL SCIENCE DEPARTMENT HEAD



Dear Block & Bridle Club Members:

Congratulations on completing another outstanding year of accomplishments. The Animal Science Department is extremely proud of the recognition you as members have brought to your Club, the Department, the University and the State of Nebraska. This 1980 B&B Yearbook starts the second decade for the publication and marks the end of a dramatic decade for our livestock industry.

Nebraska climbed to 4th place nationally in cash receipts from livestock marketings last year and it is projected that our livestock industry will continue to gain in relative prominence in the years ahead. The challenges and opportunities for Animal Science graduates are at an all time high and we are counting on you to lead our industry to new heights in the years ahead.

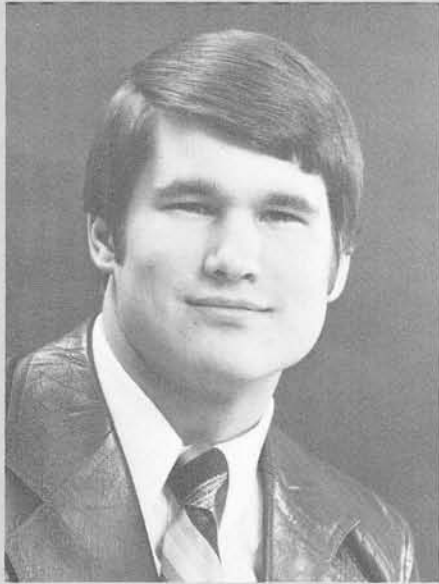
You can be proud to be a part of an industry that has made it possible for the average American to spend less of his disposable income on food than do citizens elsewhere in the world. However, the livestock industry is not without problems and we have seen production costs increase considerably in recent years as a result of outside forces. For example, several feed additives and antibiotics used extensively in feeding programs for improved gains and feed efficiency are being banned and the use of nitrites for curing meat is currently under fire. To top things off, the widely quoted McGovern Committee report on dietary goals encouraged consumers to eat less meat. All of these factors have forced livestock commodity organizations to concentrate on dispelling unfounded myths rather than utilizing their funds to develop ways to reduce production costs. We hope you will take an active part in your industry associations as you have in the Block & Bridle Club to insure a bright future for our livestock industry.

As we look to the future, we can expect dramatic changes in livestock production through nutrition, genetics, management and merchandising. The challenges will be great but we hope your educational experiences and personal contacts made while attending the university will provide you with the background to carve out a successful career in the livestock industry.

Best wishes for much success in your chosen career.

A handwritten signature in cursive script that reads "Irvin T. Omtvedt".

Irvin T. Omtvedt  
Department Head



## OUR B&B PRESIDENTS



It has been an honor and a very enjoyable experience for us to serve as the first and second semester Block and Bridle Presidents. We feel the year has been a great success. This success can only be attributed to the hard working and enthusiastic officers, committee chairmen, and members.

Looking back at the years we have been Block and Bridle members, it is evident that the club is growing stronger every year. This has been evident in our increasing size and numbers of our activities. The Quadrathlon has indeed given a new area of enthusiasm to the Club. This year we placed fifth in chapter activities, second in published yearbook and third in chapter scrapbook. We certainly believe we are among the top Block and Bridle clubs in the nation.

This club has meant very much to us, not only because of the learning experiences, but also because of the hard-working, dedicated members who are sincerely interested in the livestock industry.

We'd like to give a special thanks to our advisors, Dr. Jim Gosey, Dr. Ted Doane, and Dr. Keith Gilster. Their hard work and helpful advice was very much appreciated. Also, a big thank you to our fellow officers, Gerri Monahan, Mary Bargman, Suzy Kowalski, Deb Kleinschmidt, Willow Krause, Dave Oldfather, Susie Larson, Louise Beyea, Deb Hamernik, Jane Pauley, Jay Volk, Lynn Hagan, and Sandy Johnson. Thanks also to all our committee chairmen.

And last, but by no means least, a thank you to all the members. A club can be no better than its members. Each and every one of you has a right to be very proud of the club that you are a part of.

Being president of the Block and Bridle club has been a very rewarding experience. Thank you for putting your trust and confidence in us and for the fantastic cooperation that you gave us.

We wish the very best of luck to the club next year and in all the years ahead. It will be a sad experience for us to leave the B&B club but the memories and the great B&B friends we have made will always be with us.

Thanks again.

Sincerely,

*Mark Iodence*

Mark Iodence  
1st Semester President

*Kevin Loeske*

Kevin Loeske  
2nd Semester President



## BLOCK AND BRIDLE HONOREE WESLEY F. HANSEN

The 1979 Block and Bridle Honoree was Mr. Wes Hansen. Hansen is a graduate of a two year farm and ranch course at the University of Nebraska.

The Hansen family operates the Hansen Ranch Co. near North Platte. The ranch is the home of the "77" brand and includes over 30,000 acres spanning Lincoln, McPherson and Keith Counties. The operation consists of a cow-calf program with over 1,200 cows and over 1,500 acres of hay.

Mr. Hansen has always been an innovator. He has initiated a cross-breeding program, made changes in hay handling operations and experimented with conservation practices to better use grasslands.

He has served on the UNL College of Agriculture advisory council, the advisory committee to the U.S. Meat Animal Research Center and worked with the North Platte Experiment Station.

Hansen served as president of the Nebraska Stock Growers Association, on the board of Directors to the National Cattleman's Association and the National Livestock and Meat Board. He has been a 4-H leader for 18 years and active with the Chamber of Commerce. He served on the Board of Directors of the Dawson Public Power District and the First National Bank and Trust Company of North Platte.

Hansen and his family's awards include the 1976 Nebraska Agribusiness Award, the 1973 Knights of Ak-Sar-Ben Agriculture Achievement Award, the 1968 North Platte Jacee's Boss of the Year Award, the 1964 Hall of Agriculture Achievement, and the Western Journal-Cattleman of the Month.

# VISIT WITH THE HONOREE



1.



2.



3.

1. Wes and John look over the cowherd.
2. Dr. Zimmerman gets a few tips.
3. Wes explains a chart of livestock prices and market trends to Block & Bridle members.
4. Members enjoyed conversation at the Hansen home in North Platte.



4.

5



# MARILYN BARR NATIONAL OUTSTANDING SENIOR AWARD



Marilyn M. Barr received the 1978-79 UNL and National Outstanding Senior Award.

Marilyn's leadership and involvement began early. As a first semester initiate, Marilyn was chairman of the Alumni Dance, in charge of refreshments for each meeting, and fourth place ham salesman. She worked at the Quarter Horse Show, Beef Show, and Little Ak-Sar-Ben, and attended Spring Picnic, Honors Banquet, and Queen Coronation. Spring Tour and participating in the Livestock Judging Contest rounded out her first year.

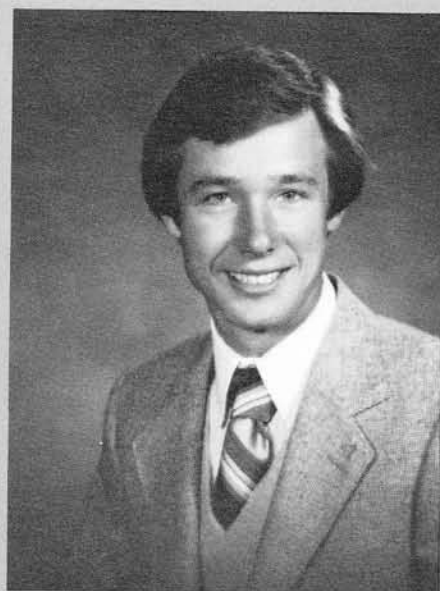
As a sophomore, Marilyn was chairman of the Beef Show. She planned and ran the largest beef progress show ever held by the club. In addition to selling hams and ads, she was involved with the annual, Fall Steak Fry, Quarter Horse Show, Kid's Day, and Little Ak-Sar-Ben.

A busy junior year included being secretary for the club and representing us as the Block and Bridle Queen. Marilyn participated in the Meat Animal Evaluation Contest in Omaha, and Block and Bridle Meats and Livestock Judging Contests. Besides aiding with every club activity held, she encouraged the recruitment of new members by sending out letters, helped select committee chairpersons for the next year, aided with the scrapbook and annual, and attended Regional Meetings. Marilyn received the National Junior Scholarship Award.

Utilizing experience gained, Marilyn served as Block & Bridle President the first semester of her senior year. Marilyn was chairman of the Constitution Revision Committee and also attended National Meetings.

In addition to Block and Bridle activities, Marilyn excelled as a member of both the UNL Meats and Livestock Judging Teams. She was a member of the Nebraska Junior Angus Association, worked at State Fair and Ak-Sar-Ben collecting data for the beef carcass contests, and helped with many judging workshops. Marilyn is now employed with the Angus Journal. A sincere thank you, Marilyn, and the best of luck to you!

# **JAMES M. TODD NATIONAL JUNIOR SCHOLARSHIP AWARD**



James M. Todd received the UNL and National Junior Scholarship Award.

Jim's dedication and hard work for the Block & Bridle Club began when he was a freshman. Jim was a first semester initiate, participated in Little Ak-Sar-Ben, Ham Sales, Livestock Judging Contest, Fall Steak Fry, Quarterhorse Show, and Beef Show. Jim also helped with taking pictures of club activities.

As a sophomore, Jim was the club photographer, MAEC co-chairman, on the first Ag Symposium committee, and placed fifth overall in the senior division of the Meats Judging Contest. He attended Little Ak-Sar-Ben, Christmans Coffee, Honors Banquet, Spring Picnic, Quarterhorse Show, Beef Show, Fall Steak Fry, and was an active member of the B & B executive committee.

During his junior year, Jim served as the second semester vice-president of Block & Bridle. He also planned and organized the Honors Banquet for that year. Jim was on the Ag Symposium committee, Honoree Selections Committee, and Executive Committee. He placed second overall in the Meats Judging Contest. Besides attending every club activity, Jim also sold hams and ads, helped with work on the scrapbook, and was club photographer.

Jim has also been involved in many other collegiate activities. These include Alpha Gamma Rho fraternity, University Program Council, Alpha Zeta (an agriculture service honorary), selected to join Mortar Board and the Innocents Society (both senior honorary societies). He has also been a member of the UNL intercollegiate Meats Judging Teams. He has attended Honors Convocation and participated in intramural athletics.

The members of Block & Bridle extend a sincere thank you to Jim for his many hours of time and effort in helping the club, and wish him the best luck in the future!

**MIDWEST POULTRY  
and  
LIVESTOCK, INC.**

**610 DORSEY ST.  
BEATRICE, NE 68310**

**Earl Henderson  
& Sons**

*Registered & Commercial Herefords*



**35 miles west of Alliance, Nebr.  
on 10 Street Road**

**Earl - 308-487-3942**

**Jack - 308-487-3932    Bill - 308-487-3847**

---

**AMERICAN STORES PACKING CO.**



**SALUTES AND SUPPORTS THE GROWTH  
OF NEBRASKA'S AGRICULTURAL AND  
LIVESTOCK INDUSTRY.**

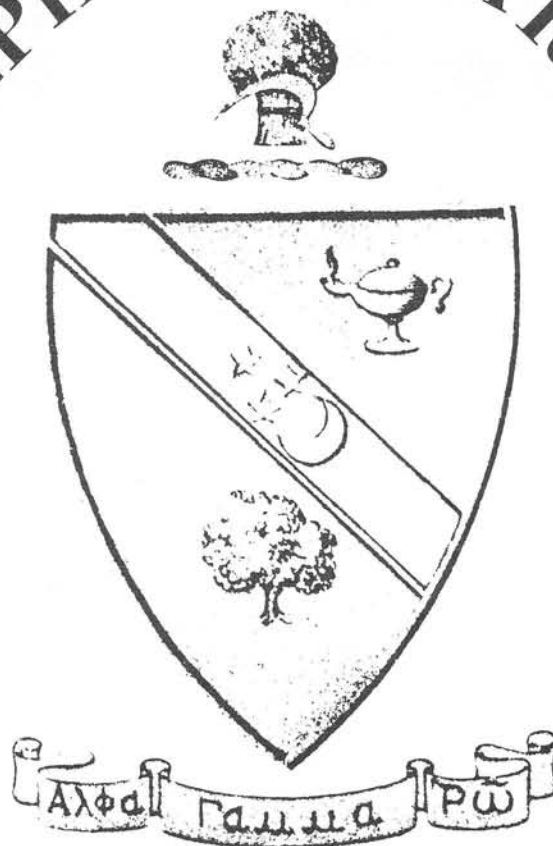
**200 South 2nd St.  
Lincoln, Ne.  
402-475-2002**

---

# CONGRATULATIONS BLOCK AND BRIDLE CLUB

From

ALPHA GAMMA RHO



Alpha Gamma Rho, an Agricultural Fraternity has been building better men through agriculture since 1917 on the University of Nebraska Campus at Lincoln, Nebraska.

*Feel free to stop in anytime and see us at 1430 Idylwild Drive.*

# ANIMAL SCIENCE FACULTY



- |  |  |
|--|--|
| 1. Irvin T. Omtvedt, <i>Head of Department</i>               | 20. Robert A. Britton, <i>Ruminant Biochemistry</i>          |
| 2. Dennis A. Olson, <i>Meats</i>                             | 21. Ernest R. Peo, Jr., <i>Swine Nutrition</i>               |
| 3. Glen W. Froning, <i>Poultry Production</i>                | 22. Paul Q. Guyer, <i>Extension Livestock Specialist</i>     |
| 4. Dwight F. Stephens, <i>Beef Production</i>                | 23. Tom W. Sullivan, <i>Poultry Nutrition</i>                |
| 5. Foster G. Owen, <i>Dairy Nutrition</i>                    | 24. Roger J. Kittok, <i>Reproductive Physiology</i>          |
| 6. Franklin E. Eldridge, <i>Dairy Breeding</i>               | 25. Doyle H. Free, <i>Poultry Industry</i>                   |
| 7. Keith E. Gilster, <i>Livestock &amp; Swine Production</i> | 26. Jim E. Kinder, <i>Beef Physiology</i>                    |
| 8. Larry L. Larson, <i>Dairy Physiology</i>                  | 27. Ted H. Doane, <i>Sheep Production</i>                    |
| 9. Dan E. Bigbee, <i>Poultry Production</i>                  | 28. Franklin J. Struwe, <i>Poultry</i>                       |
| 10. Merlyn K. Nielsen, <i>Beef Breeding</i>                  | 29. Terry J. Klopfenstein, <i>Ruminant Nutrition</i>         |
| 11. Dwight H. Loveday, <i>Meats</i>                          | 30. Ron Moser, <i>Swine Nutrition</i>                        |
| 12. Roger W. Mandigo, <i>Meats</i>                           | 31. Dwane R. Zimmerman, <i>Swine Physiology</i>              |
| 13. Stanley D. Farlin, <i>Beef Nutrition</i>                 | 32. Gary L. Bennett, <i>Poultry Genetics</i>                 |
| 14. Dennis R. Brink, <i>Ruminant Nutrition</i>               | 33. Richard B. Warren, <i>Livestock Judging &amp; Horses</i> |
| 15. Charles A. Adams, <i>Meats</i>                           | 34. Terry L. Shrick, <i>Swine Industry</i>                   |
| 16. Austin J. Lewis, <i>Swine Nutrition</i>                  | 35. Bobby D. Moser, <i>Swine Nutrition</i>                   |
| 17. William T. Alschwede, <i>Extension Swine Specialist</i>  | 36. Steve Abrams, <i>Ruminant Nutrition</i>                  |
| 18. Gordon E. Dickerson, <i>Breeding &amp; Genetics</i>      | 37. John K. Ward, <i>Beef Nutrition</i>                      |
| 19. James A. Gosey, <i>Beef Breeding</i>                     | 38. Rodger K. Johnson, <i>Swine Breeding</i>                 |

# ANIMAL SCIENCE GRADUATE STUDENTS



- |                      |                    |                          |                     |
|----------------------|--------------------|--------------------------|---------------------|
| 1. Allen Schinckel   | 12. Sara Melin     | 23. Ron Moser            | 34. Dave Rock       |
| 2. Ann Hollingsworth | 13. Alden Booren   | 24. Kazuhito Imakawa     | 35. Dan Faulkner    |
| 3. Mary McGinley     | 14. Joe Crenshaw   | 25. Scott Schallenberger | 36. Randy Young     |
| 4. Huthail Najib     | 15. John Lo        | 26. Gary Faltys          | 37. Keith DeHahn    |
| 5. Mohamad Ali Ishak | 16. Mark Wise      | 27. Dale Grosbach        | 38. Bill Brown      |
| 6. Jose Rios         | 17. Erik Cleveland | 28. Greg Schindler       | 39. Mike McDonnell  |
| 7. Pattie Hellmann   | 18. Mike Lesiak    | 29. John Merrill         | 40. Ron Nimmo       |
| 8. Dan Ngoka         | 19. Mike Tess      | 30. Duane Reese          | 41. Dave Harmon     |
| 9. Abdul Babji       | 20. Phil David     | 31. Neal Fogarty         | 42. Rick Stock      |
| 10. Abe Turgeon      | 21. Dick James     | 32. Kevin Jones          | 43. Parvis Asadpour |
| 11. Tom Trotter      | 22. Russ Olson     | 33. Chuan-Ting Wang      | 44. Mark Nelson     |

# ANIMAL SCIENCE SECRETARIES



Back Row (Left to Right) Debbie Koester, Jane Ossenkop, Mary Jacobs, Minnie Royal, Vicky Kobes, Rene Gellatly, Marion Martinson, Alice Teter, Beth Honnen.  
Front Row (Left to Right) Margaret Erickson, Cheryl Masek, Tammy Virus, Leo Shandera, Cindy Hilsabeck.

## Styleline Yorkshires

**NEBRASKA AND NATIONALLY ACCREDITED—REGISTERED**

**CLOSED HERD  
EXCELLENT SELECTIONS**

**BOARS AND GILTS  
FOR SALE**

**MAKING THE BEST  
BETTER**

YOU WILL FIND MANY BENEFITS FROM THE S.P.F. PROGRAM. WHY NOT TRY IT AND SEE? PLEASE SEE FOR YOURSELF. WE WILL BE GLAD TO VISIT WITH YOU ABOUT OUR STOCK AT ANY TIME. NEW BLOODLINES INTRODUCED 3 TIMES A YEAR. WE ARE EXPANDING TO MEET YOUR NEEDS.

COME ANYTIME FOR A GOOD SELECTION. WE CAN SERVE BOTH THE PUREBRED BREEDERS AND COMMERCIAL HERDS. BLOODLINES NOW AVAILABLE AND IN THE FUTURE, ARE FROM CHARLIE HUSTLE, THUNDERBOLT, EDDIE BROS. BREEDING, LIFT AND TOP CHOICE AND ARK 52-1, TWIN PINES FARMS. THE ABOVE BREEDING GIVES US BASIS FOR FRAME, MUSCLE, SOUNDNESS AND PRODUCTIVITY—ALL AROUND TOP STOCK.

## EBERLE FARMS

Gary Eberle  
Phone (402) 736-4691

Kent Allen—Herdsmen  
Bradshaw, Nebraska 68319  
Rt. 1, Box 20

Phone area code 402-736-4691  
6 miles north, 1 mile east from Bradshaw

Lloyd Eberle  
Phone (402) 362-5802





# WAGON WHEEL CHAROLAIS RANCH



V  
I  
S  
I  
T  
O  
R  
S

W  
E  
L  
C  
O  
M  
E  
D



Performance Testing 16 Years

Calving Ease . . . Growthy . . . Top Quality

Senior Herd Sire LCR Royal Duke J7 Polled

"Sam and Spain's Royal Ranger Breeding"

FOR SALE . . . HERD SIRE PROSPECTS

COMMERCIAL BULLS . . . 50 OPEN and BRED FEMALES

ALSO, 4-H and F.F.A. BREEDING HEIFERS

*Ray D. Winz & Sons*

HOLDREGE, NEBRASKA 68949

Harlan County 4-H Champions have been produced  
at our ranch the past 12 years!!

Phone - 308-995-5515  
Ragan - 308-567-3388

9 miles south, 3 miles east,  
1/2 mile north of Holdrege



**SPRINGFIELD  
STATE BANK**

500 MAIN STREET  
SPRINGFIELD, NEBRASKA 68059

A FULL  
SERVICE  
BANK

Each depositor insured to \$40,000  
**FDIC**  
FEDERAL DEPOSIT INSURANCE CORPORATION

## FEED SERVICE CORPORATION

Crete, Nebraska 68333 Telephone (402) 826-2171

*The Pioneer in the Liquid Feed  
Industry since 1951*

**MOREA**  
Energized Protein  
Supplement

**CATALYX**  
Minerals & Nutrient Blocks

**MORANOL**  
Energized Supplement

"NUTRITION BY CHOICE, NOT BY CHANCE"



## Line 1 Performance Power With



CH Domino 524 — A type 6

205 day wt.—655 NR—110 ADJ WDA—3.10  
365 wt.—1133 Top selling bull in "76" Cooper-Holden Sale. ½ interest sold in "79" Main Sale for \$23,000 to Jensen Hfds., Circle, Mont. Also owned by Spencer & Shovel Dot.

### JUNIOR HERD SIRE at Spencer & Shovel Dot

CL 1 Domino 850—Type 6. 205 day wt.—655 lbs. NR 101 365 day wt.—1135 lbs. 2 yr. wt.—1800. 2 yr. ht. 5'7".  
Maternal granddam sold for \$35,000 in Cooper-Holden female sale. A tremendous future.

#### *In service at Shovel Dot*

- "Super Six" SH Advancer 778  
A type 6 bull
- L1 CL3 Domino 75458
- SDR L1 Domino 873
- SDR L1 Domino 987
- SDR L1 Domino 8024

**S**HOVEL **D**OT **R**ANCH

Rose, Nebraska 68872

Barney Buell  
402-684-2534

Homer Buell  
402-273-4360

#### *In service at Spencer's*

- LHR L1 Domino 7646—Top selling bull calf in  
Lund Disp. for \$10,000 \$46,000 Evaluation.
- CL 1 Domino 027
- DS L1 Domino 965
- KB L1 Domino 6268
- MH L1 Domino 6313

**SPENCER HEREFORDS**

Annual Sale Brewster, Nebraska 68821  
Nov. 12

Don, Mike, Dale  
308-547-2484 or 2496

## OUR ADVISORS



The Block & Bridle advisors for 1979-80 are from left: Dr. Jim Gosey, Dr. Keith Gilster, and Dr. Ted Doane.

Dr. Ted Doane, professor of Sheep Production and Introductory Animal Science, is our junior advisor. Dr. Doane did his undergraduate work at Oklahoma State and received his masters and doctorate degrees at Kansas State.

Dr. Keith Gilster, professor of Animal Science, is our freshman advisor. Dr. Gilster did his undergraduate and masters work at Nebraska, and received his doctorate degree from South Dakota State.

Dr. Jim Gosey, assistant professor in Beef Breeding, is our senior advisor. Dr. Gosey's undergraduate work was done at Oklahoma State, his masters work done at New Mexico State, and his doctorate degree from Nebraska.

These three men have worked very hard in helping the Block & Bridle Club achieve success and reach our goals. They have spent numerous hours lending advice, guidance, and a helping hand. For all of the time and assistance you have given us, we wish to say, "THANK YOU"!

# CLUB OFFICERS

## First Semester



Left to Right:	.....	Historian
Jane Pauley .....	.....	Assistant Historian
Sandy Johnson .....	.....	Assistant Marshal
Dave Oldfather .....	.....	Marshal
Willow Krause .....	.....	Vice-President
Gerri Monahan .....	.....	President
Mark Iodence .....	.....	Treasurer
Mary Bargman .....	.....	Secretary
Suzy Kowalski .....	.....	Program Chairman
Lyn Hagen .....	.....	

## Second Semester



Left to Right:	.....	Assistant Historian
Deb Hamernik .....	.....	Marshal
Dave Oldfather .....	.....	Treasurer
Willow Krause .....	.....	President
Kevin Loseke .....	.....	Vice-President
Mary Bargman .....	.....	Secretary
Deb Kleinschmidt .....	.....	Program Chairman
Jay Volk .....	.....	

Not Pictured:	.....	Historian
Louise Beyea .....	.....	Assistant Marshal
Susie Larsen .....	.....	

# EXECUTIVE COMMITTEE

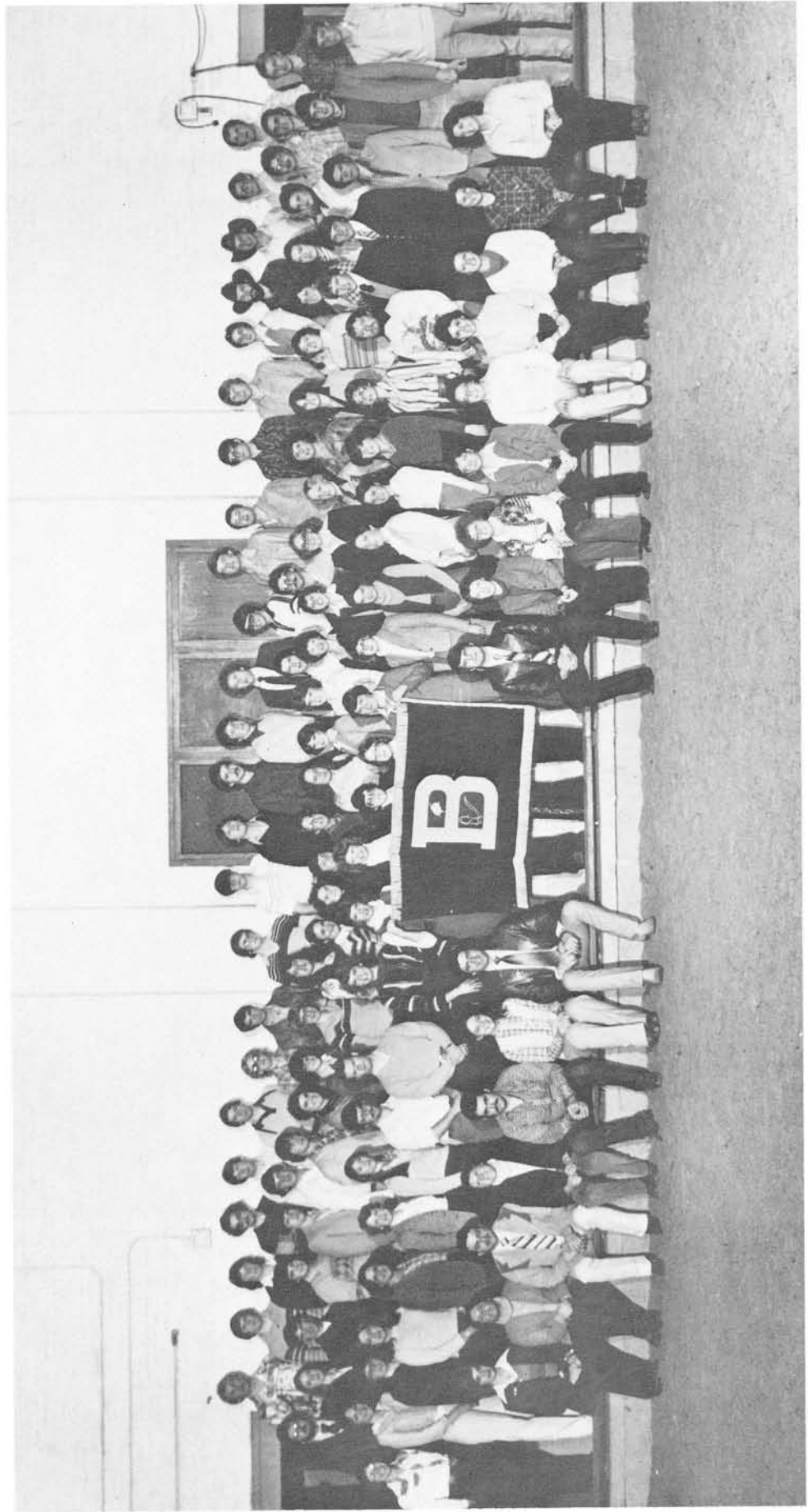


Front Row (*Left to Right*): Sandy Johnson (First Semester Assistant Historian), Susan Kaczor (Christmas Coffee), Joyce Felt (Christmas Coffee), Kerri Votaw (Kid's Day), Kathy Auch (Spring Tour), Teresa Vance (Fall Steak Fry), Willow Krause (Second Semester Treasurer), Butch Henderson (Meats Judging Contest), Lin Jeffres (Livestock Judging Contest), Galen Gerdes (Little AKSARBEN), Mark Iodence (First Semester President), Kevin Loseke (Second Semester President), Suzy Kowalski (First Semester Secretary), Deb Hamernik (Second Semester Assistant Historian), Gerri Monahan (First Semester Vice-President), Deb Kleinschmidt (Second Semester Secretary).

Back Row (*Left to Right*): Jane Pauley (First Semester Historian), Jay Schroeder (Beef Show), Erv Werner (Little AKSARBEN), Tammie Trauernicht (Little AKSARBEN), Larry Ehrmann (MAEC), Dean Lesoing (Honor's Banquet), Mary Dunn (Annual), Ann Henderson (Spring Picnic), Patti Hollibaugh (Beef Show), Tammy Garey (Ag. Symposium), Scott Spilker (Honor's Banquet), Jay Volk (Second Semester Program Chairman), Tim Davis (Meats Judging Contest), Lyn Hagen (First Semester Program Chairman), Doug Frels (Animal Science Completion Project), Kathy Pool (Quarter Horse Show), Mary Bargman (Second Semester Vice-President).

Not Pictured: Cindy Dunlay (Quarter Horse Show), Bob Soucie (Quarter Horse Show), Patty Lutter (Ag. Symposium), Jim Nemecek (Ag. Symposium), Jayne Witte (Newsletter), Linda Woodside (Newsletter), Louise Beyea (Second Semester Historian), Greg Cromer (Kid's Day), Galen Loseke (MAEC), Don Batie (Ham Sales), Marc Milanuk (Livestock Judging Contest), Darcy Stephens (Spring Picnic), Dave Oldfather (Second Semester Marshal), Craig Uhrig (Sticker Sales), Steve Vinton (Activities Mart).

**1979-1980  
Block and Bridle  
MEMBERSHIP**



FRONT ROW: (left to right): Willow Krause—Alliance, Deb Hamernik—Columbus, Jay Volk—Arlington, Mary Bargman—Beatrice, Dave Oldfather—Lincoln, Deb Kleinschmidt—Grafton, Kevin Loseke—Sutton, Mark Iodence—Hemingford, Gerri Monahan—Hyannis, Suzy Kowalski—St. Paul, Lynn Hagan—Oconto, Sandy Johnson—Blair, Jane Pauley—Harvard, Trudy Stehlik—Crete, Gay Yoachim—Belvidere, Carole Finkner, Adams.

SECOND ROW: Joyce Felt—Mason City, Patsy Wieck—Grand Island, Susan Kaczor—Osceola, Mary Dunn—Murdock, Denise Brosius—Brady, Pat Keester—Lincoln, Kathy Auchr—Wahoo, Larry Ehrman—Gering, John Maddux—Wauneta, Kerry Votaw—Wellfleet, Teresa Vance—Red Cloud, Jeffifer Smith—Blair, Jenny Lees—Whitney, Ann Stedman—Palmyra, Betty McCutchan—Nelson, Jan Volk—Battle Creek, Roberta Barr—Liberty, Jennifer Uhrig—Hemingford, Sheila Eipperle—Bennington, Lea Anne Winget—Marsland, Cindy Dunlay—Orleans, Doug Frels—Hershey, Jeff Miller—North Bend, Scott Spilker—Beatrice, Dave Bartels—Campbell, Mike Krause—Alliance, Scott Langemeier—Schuyler.

THIRD ROW: Bob Nelson—Norfolk, Alexis Bennett—Lincoln, Don Brainard—Elwood, Craig Uden—Bruning, Tim Davis—Wood Lake, Scott Hoffschneider—Waco, Mike Neary—Lincoln, Cindy Cammack—Dewitt, Colleen Mitchell—Fairfield, Sharon Kriewald—North Loup, Kathy Pool—Papillion, Julie Miller—Culbertson, Pattie Hollibaugh—Marsland, Sally Klein—McCook, Ann Henderson—Alliance, Tammy Garey—Syracuse, Annette Fritschen—Scottsbluff, Steve Harris—Brule, Maureen Kaup—West Point, Rhonda HineLine—Kennard, Galen Gerdes—Auburn, Clare Peterson—Stromsburg, Luann Stromberg—Genoa, Cheryl Gerdes—Auburn, Jayne Witte—Louisville, Lori Walla—Valparaiso, Pam Smith—Ainsworth, Rose Marie Markus—Lincoln, Mary Collura—Lincoln, Steve Downing—Creston, Iowa, Galen Loseke—Scottia, Marc Milanuk—Oshkosh.

FOURTH ROW: Greg Ridder—Callaway, Dale Spencer—Brewster, Bob Doyle—Stapleton, Al Werner—Davenport, Dean Lesoing—Hickman, Mike Backhaus—Bennington, Jane Kinyoun—Superior, Bob Soucie—Upland, John Hendrickson—Shickley, Edgar Hatch—Harrison, Dan Merchen—Crofton, Kevin Large—Wauneta, Mark Klimes—Clarkson, Erv Warner—Arapahoe, Jay Schroeder—West Point, Steve Gierhan—Lexington, Butch Henderson—Alliance, Lin Jeffres—Burwell, Dave Merchen—Crofton, Lane Sabata—David City, Tony Likens—Steele City, Terry Likens—Steele City, Don Kracke—Dewitt, Craig Uhrig—Hemingford.

NOT PICTURED: Tim Acton—Holmesville, Arne Anderson—, Don Batie—Lexington, Louise Beyea—Springview, Greg Cromer—Gering, Tracy Glock—Rising City, Steve Goll—Blue Hill, Mike Imig—Thedford, Brian Iodence—Hemingford, Steve Kliewer—Lushton, Patty Lutter—Valentine, Jim Nemeec—Brainard, Tim Nollette—Nenzel, Dave Olson—York, Lynn Ann Pieper—North Platte, Rich Roncka—Omaha, Charlie Shafer—Wood River, Darcy Stephens—Omaha, Jim Todd—Brunswick, Tammie Trauernicht—Beatrice, Allyson Trenchard—Oxford, Steve Vinton—Mullen, Clark Volk—Arlington, Scott Wiens—Beatrice, Linda Woodside—Clarks, Nancy Yost—Hastings.

# 1979-80

## BLOCK & BRIDLE INITIATES



FRONT ROW (*left to right*): Penni Price—Lincoln, Carole Finkner—Adams, Alexis Bennett—Lincoln, Trudy Stehlick—Crete, Pat Keester—Lincoln, Jenny Lees—Whitney, Ann Stedman—Palmyra, Betty McCutchan—Nelson, Jan Volk—Battle Creek, Roberta Barr—Liberty, Jennifer Uhrig—Hemingford, Sheila Eipperle—Bennington, Lea Anne Winget—Marsland, Jeff Miller—North Bend, Steve Downing—Creston, IA.

SECOND ROW: Mike Backhuus—Bennington, Bob Nelson—Norfolk, Gay Yoachim—Belvidere, Colleen Mitchell—Fairfield, Sharon Kriewald—North Loup, Julie Miller—Culbertson, Sally Klein—McCook, Annette Fritschen—Scottsbluff, Maureen Kaup—West Point, Rhonda Hinehline—Kennard, Clare Peterson—Stromsburg, Luann Stromberg—Geona, Cheryl Gerdes—Auburn, Pam Smith—Ainsworth, Rose Marie Markus—Lincoln, Mary Collura—Lincoln.

THIRD ROW: Al Werner—Davenport, John Hendrickson—Shickley, Edgar Hatch—Harrison, Dale Spencer—Brewster, Bob Doyle—Stapleton, Craig Uden—Bruning, Mark Klimes—Clarkson, Lane Sabata—David City, Terry Likens—Steele City, Scott Langemeier—Schuyler, Mike Krause—Alliance, Dave Bartels—Riverton.

NOT PICTURED: Brian DeBrie—Kearney, Karen Fisher—North Loup, Rhonda King—Ashby, Tony Lesiak—Fullerton, Paul Maly—Weston, Kevin Behrens—Mead, Dennis Comer—Phillips, Dean Davis—Beaver Crossing, Dave Earsom—Holdrege, Val Eberspacher—Beaver Crossing, Ronald Gentrup—West Point, Steve Harris—Brule, Mike Howard—Lincoln, Steven Huneke—Wilber, Bryan Kinney—Waco, Doug Klein—Harvard, Susan Larson—Lincoln, Leroy Lindner—Broken Bow, Patrick McClaughry—Omaha, Jeanne Morgan—Burwell, Brian Mowitz—Hampton, Mike Neary—Lincoln, Jeff Ord—Guide Rock, Dennis Peters—Dalton, Kyle Rutt—Campbell, Byron Schmidt—Fairbury, Gail Shaffer—Chadron, Dough Straight—Wayne, Spencer Vance—Red Cloud.

# J BAR L Cattle Co.

*Home of Superformer 08J*

The Complete Black, polled Chianina Bull, Simmental, Limousin, Chianina, and Maine Anjou club calves and breeding hiefers for sale this fall.

**FLASH!!!** Superformer sired the grand champion chianina hiefer at the Agribition show in Canada.



**Grand Champion Feeder  
Calf AK-SAR-BEN**

Mr. & Mrs. John Berggren & Family  
Weston, NE  
(402) 642-5698



**Reserve Champion Breeding  
Hiefer Nebraska State Fair**

Mr. & Mrs. Leonard Uech & Family  
Ericson, NE  
(308) 653-2371

*Hampshires since 1918  
SPF since 1960*

***Congratulations to***

Delwyn Doerneman, exhibitor of Grand Champion Market Hog 1979 Midwest Market Hog Show. Both Sire (a Hampshire) and Sire of Dam (a Yorkshire) purchased from this herd.

**James Volk and Sons  
Battle Creek, Nebraska  
402-675-5054**



**BAUMAN AGRI-SERVICE, INC.**

Hardware - Seeds - Chemicals - Lawn and Garden Supplies  
Custom Lawn Care Service - Trenching  
Well - Water Systems - Plumbing Supplies and Service

640 Dorsey Street (North Highway 77)  
**BEATRICE, NEBRASKA 68310**

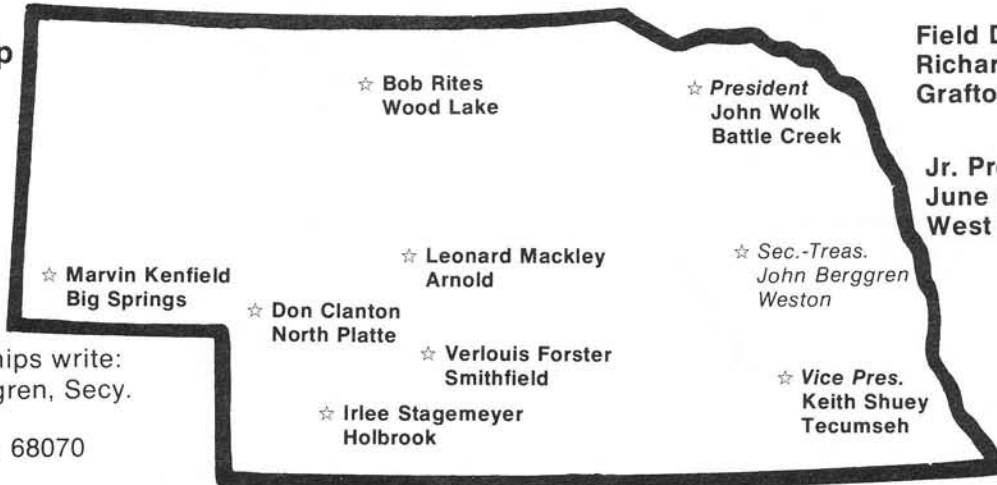


# SIMMENTALS . . . .

*THE FAST GROWING BREED IN THE NATION.  
PERFORMANCE IS THE NAME OF THE GAME.*

## NEBRASKA SIMMENTAL ASSOCIATION OFFICERS AND DIRECTORS

Write for  
Membership  
Directory



Field Day—June 21  
Richards Bros.  
Grafton

Jr. Progress Show  
June 7  
West Point

For memberships write:  
John R. Berggren, Secy.  
Box 187  
Weston, Nebr. 68070  
402-642-5698

Activities Include:

Annual Meeting and Seed Stock Sale, Steer Futurity, Bull Test and Sale, Junior Progress Show, Field Day, State Fair Show, Tour, and Club Calf Sale. Contact one of the above directors for more information.

**SELF-CONTROLLED  
PATIENT  
FAITHFUL**



The quality and proven performances of our pigs along with the "SPF" label are a winning team to recruit for your farm.

*Come See us Soon!*

**NIPPERT FARMS  
SPF YORKSHIRES**

Larry Nippert Phone 402-356-4121  
Carleton, NE 68326

**U  
F  
UDEN FEEDLOT  
CUSTOM CATTLE FEEDING**

Wayne Uden  
Bruning, Nebr. 68322

402/353-4415  
Rural Route 1

**L & N Limousin Farm  
Larry & Nancy Davidson  
Hebron, NE 68370  
(402) 768-6883**

# BLOCK AND BRIDLE/ANIMAL SCIENCE DEPARTMENT LIAISON



Left to Right: Doug Frels—Sophomore Class, Sandy Johnson—Sophomore Class, Roberta Barr—Freshman Class, Lyn Hagan—Senior Class, Willow Krause—Junior Class, Kevin Loseke—Second Semester President, Mark Iodence—First Semester President, Deb Kleinschmidt—Junior Class, Gerri Monahan—Senior Class. Not Pictured: Dr. Irv Omtvedt—Department Chairman and Spencer Vance—Freshman Class.

To promote better communication between the Block and Bridle Club and the Animal Science Department, the Block and Bridle/Animal Liaison Committee was formed. With Dr. Omtvedt, the department chairman, the club's executive committee picked two representatives from each class. Dr. Omtvedt, Dr. Gosey (Senior Advisor), the class representatives, and the club president form the committee.

The purpose of the committee is to meet as a group to freely discuss ideas, activities, and questions which come up between students and the department. Some of the things discussed at this year's meetings included the Animal Science Facility Completion Project and the Block and Bridle Quadrathlon. The committee has proved to be a good opportunity for Dr. Omtvedt to get to know Block and Bridle members and vice versa. Throughout the year the 7:00 a.m. monthly meetings produced many interesting ideas and suggestions—Even though it was an early hour!!!!

# A TRIBUTE TO THE 1980 GRADUATES

You'll soon be graduating from UNL armed with knowledge and a degree in your chosen field. We hope you'll take with you a sense of pride in the University, its faculty, and the student body.

We, the members of Block and Bridle, wish to thank you for your leadership and unselfish efforts on behalf of our club. Because of members like you, 1979-80 was a successful year!

It is our sincere wish that each of you may find your future crowned with happiness and success.



KATHY AUCH—Colon, Nebraska  
Animal Science (Production Option)

Block and Bridle:

Spring Tour Chairman  
Quarterhorse Show Committee  
Alumni Committee  
Champion Novice Beef Showman  
Meats Judging Contest Participant

Rodeo Club:

Treasurer  
Program Committee  
First Runner-Up Queen 1979  
Miss Congeniality 1979  
Wool Judging Team—1979  
Junior & Senior Livestock Judging Team



MARY BARGMAN—Beatrice, Nebraska  
Animal Science (Communications Option)

Block & Bridle:

Vice-President  
Treasurer  
Queen  
Quarterhorse Show Co-chairman  
Honor's Banquet Co-chairman  
Queen Coronation Co-chairman  
Quadrathlon Committee  
Liaison Committee  
Annual Staff  
Spring Tour 1978, 1979  
Little AKSARBEN Participant  
Beef Show Committee

Eva Fischer Scholarship  
Alpha Zeta  
Dormitory Intramurals  
University 4-H

# SENIORS . . .

DON BATIE—Lexington, Nebraska  
 Ag. Honors  
 Block & Bridle:  
 Annual Co-Editor  
 Ham Sales Co-chairman  
 Meats Judging Contest Co-chairman  
 3rd Place Ham Salesman 1978, 1979  
 1st Place Ham Sales Team 1979  
 Regents Scholarship—Freshman  
 Drake Scholarship  
 Stuart Scholarship  
 S & M McKelvie Scholarship  
 Farmhouse Fraternity:  
 Historian  
 Maintenance Manager  
 Agronomy Club:  
 Yearbook Chairman  
 Achievement Book Chairman  
 Alpha Zeta  
 Gamma Sigma Delta  
 Alpha Lambda Delta  
 Phi Eta Sigma  
 Young Republicans



LOUISE MICHELE BEYEA—Norden, Nebraska  
 Animal Science/Broadcast Journalism  
 Block & Bridle:  
 Historian  
 Newsletter Chairman  
 Queen Coronation Co-chairman  
 Queen Finalist  
 Little AKSARBEN  
 Champion Novice Horse Showman  
 Reserve Novice Sheep Showman  
 Alumni Dance Committee  
 Regents Scholarship  
 National Agri-Marketing Association  
 KRVN Radio Scholarship  
 Nebraska Farmer Company Scholarship  
 Ray Sprengle Memorial Scholarship  
 Betty Grainger Memorial Scholarship  
 Nebraska Hereford Auxiliary Scholarship  
 American Junior Herford Association  
 National Future Cattleman  
 National Association of Farm Broadcasters—  
 National Finalist  
 Alpha Chi Omega Sorority  
 Activities Officer  
 Alpha Epsilon Rho Broadcast Honorary  
 Vice President  
 Alpha Zeta  
 Nebraska Junior Hereford Association  
 State Board of Directors  
 Public Relations Director  
 News Reporter  
 Nebraska Hereford Princess  
 Nebraska Hereford Queen  
 American Junior Hereford Association  
 Golden Bull National Achievement Award  
 Nebraska Junior Stockgrowers Association  
 American Agri-Women



# SENIORS . . .

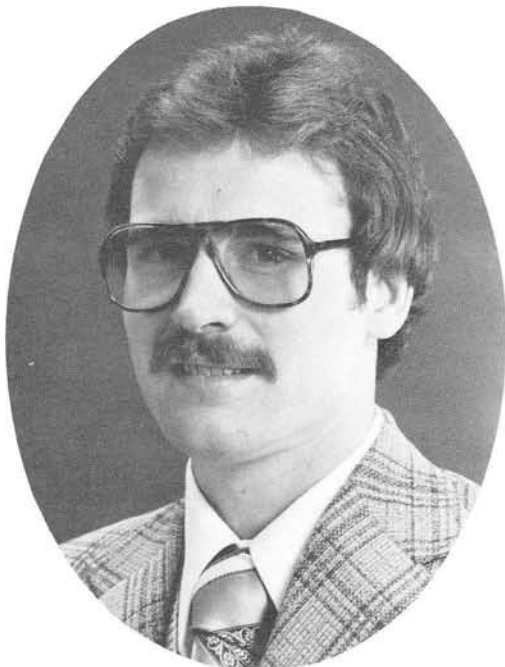
TAMERA M. GAREY—Syracuse, Nebraska  
Animal Science (Communications Option)  
Block & Bridle:

Ag. Symposium Chairman  
Spring Picnic Chairman  
Quarterhorse Show Committee  
Queen Candidate 1978  
Beef Show Committee  
Little AKSARBEN Participant  
Kid's Day  
Tractor Days at Mead  
Club Photographer  
Luther Drake Scholarship  
Outstanding 4-H Freshman  
Alpha Zeta  
Alpha Gamma Rho—Rhomate  
Vice-President  
Rush Chairman  
UPC-East Films Committee Member  
University 4-H Club



GALEN GERDES—Auburn, Nebraska  
Animal Science/Ag Education  
Block & Bridle:

Vice-President  
Little AKSARBEN Chairman  
Beef Show Chairman  
Livestock Judging Contest Chairman  
Alumni Dance  
Kid's Day  
Champion Sheep Showman  
Reserve All-Around Showman  
ASAS Summer Meetings  
Delegate to National Meetings  
Junior & Senior Meats Judging Teams  
Junior & Senior Livestock Judging Teams  
AG MEN Fraternity  
Intramural Athletics  
Beef and Horse Barn Employee



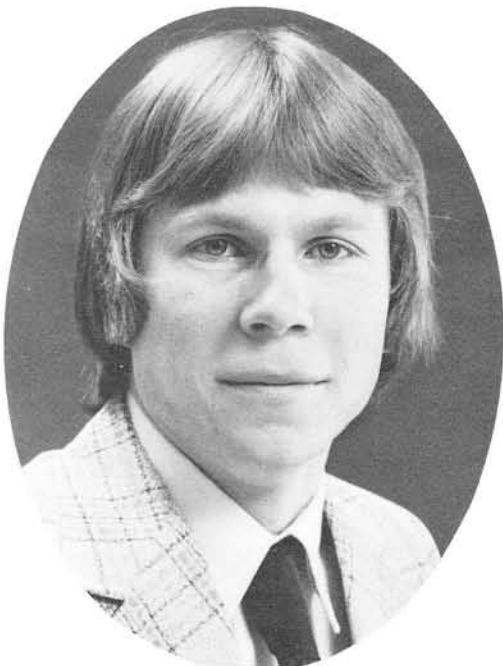
STEVEN E. HARRIS—Ogallala, Nebraska

Ag. Education  
Block & Bridle:  
National B & B Summer Meetings  
Kid's Day  
Fall Steak Fry  
Little AKSARBEN  
Alumni Dance  
Newsletter  
Quarterhorse Show  
Collegiate FFA  
Intramural Athletics  
Complex Coordinating Council  
Burr Senate  
Bowling Team



# SENIORS . . .

TONY LIKENS—Steele City, Nebraska  
 Animal Science  
 Block & Bridle:  
 Quarterhorse Show  
 Kid's Day  
 Meats Judging Contest  
 Regional Meetings  
 Little AKSARBEN Participant  
 Spring Tour



DAVID B. MERCHEN—Crofton, Nebraska  
 Animal Science (Production Option)  
 Block & Bridle:  
 Spring Tour  
 Beef Show  
 Ham Sales  
 Kid's Day  
 Little AKSARBEN Participant  
 Julian & Cathleen Canaday Scholarship  
 Meat Industry Tour

KEVIN J. LOSEKE—Sutton, Nebraska  
 Animal Science (Production Option)  
 Block & Bridle:  
 President  
 Ham Sales Co-chairman  
 Liaison Committee  
 Quarterhorse Show Committee  
 MAEC Committee  
 Alumni Dance Committee  
 Little AKSARBEN Participant  
 Livestock Judging Contest  
 Meats Judging Contest—Placed 3rd  
 AKSARBEN Scholarship  
 Union Pacific Scholarship  
 William J. Loeffel Scholarship  
 American Society of Animal Science  
 Phi Eta Sigma  
 Alpha Lambda Delta  
 Alpha Zeta  
 Alpha Gamma Rho Fraternity  
 Gamma Sigma Delta  
 Junior & Senior Meats Judging Teams  
 Junior Livestock Judging Team  
 Meat Animal Evaluation Team  
 Nebraska Junior Stockgrowers



# SENIORS . . .

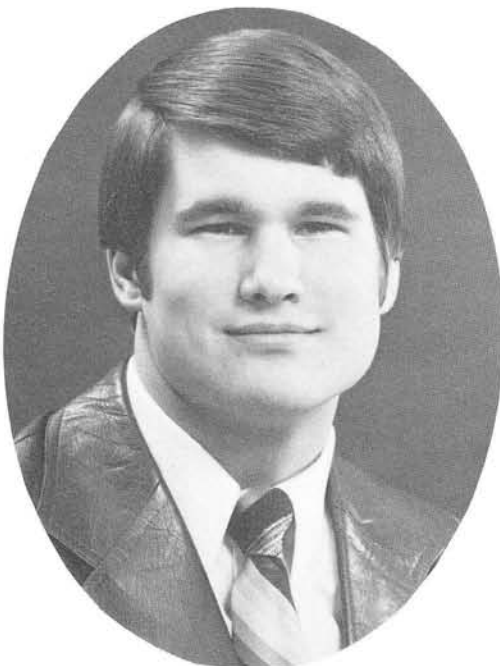


BRYAN HENDERSON—Alliance, Nebraska  
Animal Science  
Block & Bridle:  
Spring Tour Chairman  
Meats Contest Chairman  
Quarterhorse Show Committee  
Beef Show Committee  
Little AKSARBEN Committee  
Daniel Bestnor Scholarship  
NE Jr. Hereford Scholarship  
Box Butte Co. 4-H Scholarship  
Rodeo Club  
Varsity Livestock Judging Team

PATTI HOLLIBAUGH—Marsland, Nebraska  
Animal Science (Production Option)  
Block & Bridle:  
Quarterhorse Show Co-chairman  
Beef Show Co-chairman  
Honors Banquet Committee  
Ham Sales Committee  
Executive Committee  
Kid's Day Committee  
Spring Tour  
Little AKSARBEN  
Meats Judging Contest  
Junior and Varsity Meats Judging Teams  
Junior and Varsity Livestock Judging Teams  
Meat Animal Evaluation Team  
Rodeo Club



MARK IODENCE—Hemingford, Nebraska  
Animal Science  
Block & Bridle:  
President  
Ham Sales Co-chairman  
Beef Show Co-chairman  
Ag Symposium Co-chairman  
Quadrathlon Co-chairman  
Animal Science Liaison Committee  
Animal Science Completion Committee  
Honors Banquet Committee  
Little AKSARBEN Committee  
Honoree Selection Committee  
Christmas Coffee Committee  
Nebraska Hereford Auxiliary Scholarship  
Ray Sprengle Memorial Scholarship  
John Wayne Memorial Scholarship  
Pre-Vet Club  
Alpha Zeta  
Nebraska Junior Hereford Association  
American Junior Hereford Association National Officer  
Nebraska Junior Stockgrowers Association  
Worked at UNL Vet Science Department



# SENIORS . . .



GERRI LYNN MONAHAN—Hyannis, Nebraska  
Home Economics-Advertising/Gen. Ag.

Block & Bridle:

Vice-President  
Historian  
Liaison Member  
Senior Workhorse Award  
Junior Activities Award  
Ham Sales Co-chairman  
Queen Finalist  
Attended Summer Meetings  
Attended Regional Meetints  
Animal Science Completion Committee  
Meats Judging Contest—Placed 5th  
Attended & Helped on all Committees  
Junior & Senior Meats Judging Teams  
Campus Red Cross  
Advertising Club  
East Campus Gavel Club  
American Home Economics Association  
Intramural Athletics  
Japanese Ag. Training Program  
Nebraska Junior Hereford Association  
Director  
President  
Secretary  
All-American Hereford Expo 1979  
National Achievement Award Winner  
Queen Finalist  
American Junior Hereford Association  
Golden Bull Achievement Award  
Central States Pride of Nation Member  
Nebraska Junior Stockgrowers Association  
Vice-President  
Youth of the Month  
Fair Booth Chairman

TAMMIE TRAUERNICHT—Beatrice, Nebraska

Animal Science (Production Option)

Block & Bridle:

Little AKSARBEN Co-chairman  
Quarterhorse Show Co-chairman  
Meats Judging Contest Co-chairman  
Beef Show Committee  
Kid's Day  
Christmas Coffee  
Fall Steak Fry  
Spring Picnic  
Ham Sales  
Basketball Team  
Regional Meetings  
Luther Drake Scholarship  
Rodeo Club  
Alpha Gamma Rho—Rhomate





# SENIORS . . .

JAMES M. TODD—Brunswick, Nebraska  
Ag. Honors

Block & Bridle:

Vice-President

Honors Banquet Co-chairman

Honoree Selections Committee

Meat Animal Evaluation Co-chairman

Ag Symposium Committee

Meats Judging Contest—Placed 2nd

Club Photographer

Attended all Activities

Nebraska Junior Scholarship—1979

National Junior Scholarship—1979

Alpha Gamma Rho Fraternity

Alpha Zeta

Chancellor

Alpha Lambda Delta

Phi Eta Sigma

Gamma Sigma Delta

Mortar Board

Innocents Society

Regents Scholarship

Randall Harriet Scholarship

Alpha Gamma Rho High Pledge Scholarship

Vernon Seabury Scholarship

Luther Drake Scholarship

Alpha Zeta Scholarship

David Memorial Trust Scholarship

East Union Program Council

Newman Center

American Angus Association

Nebraska Junior Angus Association

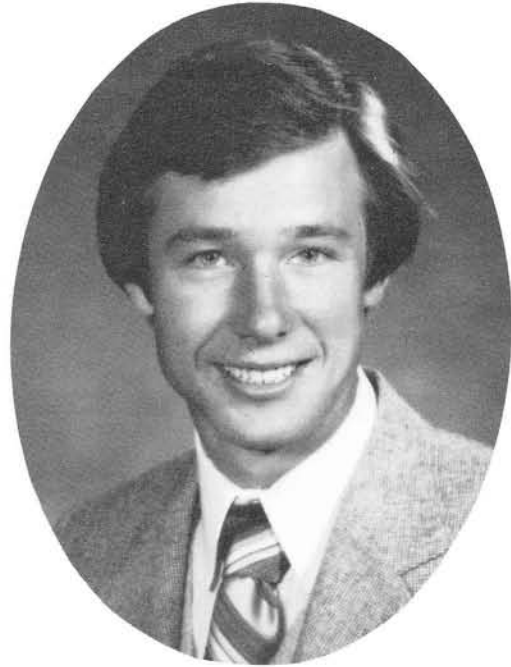
Nebraska Junior Stockgrowers

Ag Econ Club

Young Republicans

Junior Meats Judging Team

Senior Meats Judging Team



JAY R. VOLK—Arlington, Nebraska  
Animal Science (Production Option)

Block & Bridle:

Program Chairman

MAEC Chairman

Beef Show Committee

Little AKSARBEN Participant

Meats Judging Contest

Livestock Judging Contest

Moorman Manufacturing Co. Scholarship

Alpha Gamma Rho Fraternity

Vice-President

Usher

Junior & Senior Meats Judging Teams

Junior & Senior Livestock Judging Teams

Meat Animal Evaluation Team



**The Sizzlin' Breakfast.**  
Hormel Little Sizzlers



For over three quarters of a century the Hormel Company had continued to expand the meat products market. Hormel takes great pride in being part of the good life in Nebraska, and we'd like to take this opportunity to rededicate ourselves to the continued growth in Nebraska.

We also salute the Block and Bridle Club, its members and advisors for a tremendous year!

Hormel is co-sponsor of Nebraska's largest hog show, the Midwest Market Hog Show, which is going to be held March 29, 1980 at Fremont, Nebraska.

Hormel will buy pork on a grade and yield basis to insure the hog producer of maximum return for his top-notch hogs.

Hormel's telephone number — WATS line — 800-642-9997.

Geo. A. Hormel Co.  
P.O. Box 69 Fremont, Nebr. 68025

**Hormel BRAUNSCHWEIGER**



**Kid food that doesn't kid mothers**



**Hormel Range brand Bacon**



**RANGE BRAND Wranglers**



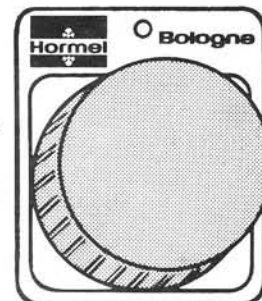
**BIGGER, SMOKIER, COARSER-GROUND.**



**Hormel Cure 81**  
**The Dependable Ham**



**Hormel Bacon**



# Nebraska Registered Sheep Breeders Top of the Flock Sale

August 2, 1980

August 1, 1981

Board of Directors  
Robert Ahlschwede, Crete  
Harry Hart, Cozad  
Alan Kjeldgaard, Tekamah  
David Bridges, Bruning  
Bruce Robinson, Bennet  
Dean Benker, Potter

Secretary  
Ted Doane  
U of N-L



Congratulations

Block  
And  
Bridle  
Members

Beatrice  Livestock Sales Co.

Cattle sales every Monday

Fdr Pig sales every Tuesday

Hog sale every Wednesday

Clarence Tetmeier  
Jr. Thimm

Delmer Jurgens

*Before you buy, see the long  
green line at:*

**Schlieff Implement,  
Inc.**

*Sales & Service*

Hebron, NE

Ph. 768-6077



**Courtesy  
of**

**Washco Feeds**

**Blair, Nebraska**



**Royal Brothers**

accredited S.P.F.  
Hampshires

bred and selected for fast growth and  
mothering ability.

Rt. 1 Box 226  
Palmyra, NE 68518  
Ph. (402) 780-5754

# BLOCK & BRIDLE CALENDAR

## ACTIVITIES

Fall Steak Fry .....	September 13, 1979
Activities Mart .....	September 13, 1979
Little Ak-Sar-Ben .....	October 6, 1979
Alumni Dance & Queen Coronation .....	October 6, 1979
Kid's Day .....	October 12, 1979
Mead Tour .....	October 14, 1979
Ag Symposium .....	November 16, 1979
Ham Sales .....	November-December, 1979
Christman Coffee .....	December 12, 1979
Meats Judging Contest .....	March 8, 1980
MAEC .....	March 20-22, 1980
Spring Tour .....	March 29-April 2, 1980
Quarterhorse Show .....	April 10-11, 1980
Beef Show .....	April 12, 1980
Quadrathlon .....	April 15-17, 1980
Livestock Judging Contest .....	April 19, 1980
Spring Picnic .....	April 20, 1980
Honors Banquet .....	April 25, 1980
Newsletter .....	October 1980 & March 1980
Sticker Sales .....	All Year

## MEETINGS

- September 13, 1979—Steak Fry. A short business meeting was held and the Animal Science staff introduced.
- September 20, 1979—After the business meeting, numbers were drawn for Little Ak-Sar-Ben.
- October 4, 1979—The club chose a topic for Ag Symposium.
- October 18, 1979—Slides were shown of past tours taken by previous club members.
- November 1, 1979—A film on the Quadrathlon Sweepstakes Competition was shown and most members showed interest in competing.
- November 15, 1979—Ham Sales were explained to the club.
- November 29, 1979—Initiation of first semester initiates. Officer nominations for second semester. Elanco presentation of Careers in Agriculture, followed by a pizza party.
- December 6, 1979—Election of officers for second semester.
- January 24, 1980—Business, Business, Business!
- February 7, 1980—A film was shown on red meat research by the USDA.
- February 21, 1980—Slides were shown of the tour to New Zealand over Christmas vacation by several club members.
- March 6, 1980—Pictures of the club were taken.
- March 27, 1980—Spring Tour plans were finalized. Quarterhorse and Beef shows were discussed.
- April 17, 1980—Quadrathlon finals were held. Second semester initiation. Nominations for next fall officers.
- May 1, 1980—Election of officers.

# HONORS BANQUET

*Honoree* Wesley F. Hansen; *Honorary Members* Bob Howard, Dick Dodds; *Senior Scholarship* Marily Barr; *Junior Scholarship* Jim Todd; *Senior Workhorse* Gerri Monahan; *Junior Activities* Janet Devel; *Sophomore Activities* Willow Krause.

*Little Ak-Sar-Ben Champions*

Swine—Clark Volk (*Champion Showman*)  
 Sheep—Cindy Cammack  
 Beef—Deb Kleinschmidt (*Reserve Showman*)  
 Horse—Rose Marie Markus  
 Dairy—Kristin Anderson

*Livestock Judging Contest*

Sr. Division  
 1st—Steve Kile  
 2nd—Chris Buechle  
 Jr. Division  
 1st—Glenn VonSeggern  
 2nd—Gary Nelson

*Team Champions*

Sandy Johson, Lin Jeffers, Jayne Witte, Gelen Loseke



2.



3.



1.



4.



5.



7.



6.

1. Gerri Monahan being presented the Senior Workhorse Trophy by Dave Mowitz from the Nebraska Farmer.
2. Outstanding Animal Science Seniors are presented awards by Irvin Omvedt, Animal Science Department Head.
3. Dr. Dwight Loveday and his wife clown around with the "gifts" from the Meats Team members.
4. Honoree Wes Hansen receiving congratulations.
5. Honorary Member Dick Dodds and B&B president John Campbell.
6. B&B president John Campbell and Honorary Member Bob Howard.
7. Dr. Mandigo has a new friend, compliments of the Ham Sales Committee.
8. Top Ham Salesmen. From left to right: Suzi Kowalski 4th, Mark Iodence 5th, Willow Krause 6th, Deb Kleinschmidt 2nd, Kerri Votaw 1st. Not pictured: Don Batie 3rd.



8.

# SUMMER MEETINGS

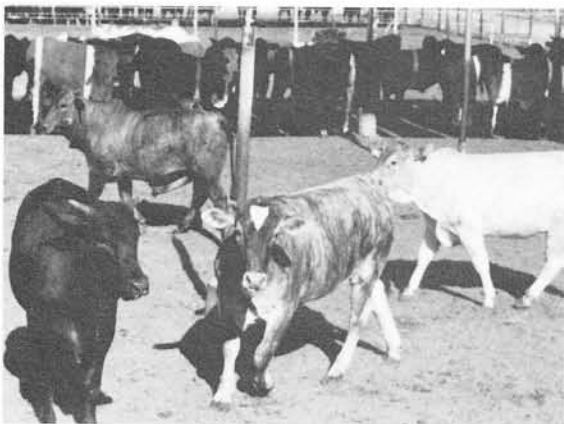
On July 29, four Block and Bridle members arrived in Tucson, Arizona to attend the annual ASAS meetings being held there. Those attending the Nat'l B&B portion of those meetings were Cindy Dunlay, Doug Frels, Steve Harris and Suzy Kowalski.

On the way to Tucson the group toured Dodge City, Kansas and the White Sands Nat'l Monument in New Mexico.

While the meetings were being held, on Monday, the group toured a Hereford ranch near the Mexico-Arizona border, and Kitt Peak Observatory. On Tuesday they toured Red River Land & Cattle Co. Feedlot, which was formerly owned by the late John Wayne. The group also toured the Saguaro Desert Museum on Tuesday.

On Wednesday the official meeting got underway. Here it was announced that our president, Marilyn Barr, was the National Senior Scholarship winner. Cindy and Suzy also presented a slide show on the club's activities. The meetings were adjourned and the members headed home with new ideas and more encouragement that the next year would be better than the last.

On the trip home the members saw the Grand Canyon Nat'l Park and toured the City of Durango, Colo.





Guarding horse, pet and livestock health through fine vaccines and pharmaceutical products for use by your veterinarian.

*For 60 years guarding livestock and pet health with fine vaccines and pharmaceutical products for use by your veterinarian.*

**N**  
**NORDEN**  
 a SmithKline company  
 Lincoln, Nebraska 68501

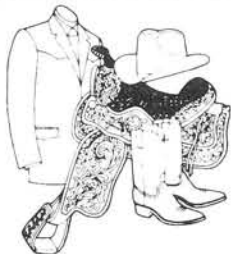
## Alton A. Gottwald And Son



Rural Route #3/8  
 P.O. Box 163  
 Nebr. City, NE 68410

"Limousin"

402-873-4575



"QUALITY WESTERN  
 WEAR FOR THE  
 ENTIRE FAMILY"

**BELL'S WESTERN WEAR**

LOREN BELL  
 OWNER



514 ELLA  
 BEATRICE,  
 NEBRASKA

Headquarters

for  Nutrena Feeds



Complete Livestock Feed Service

SEED ■ FERTILIZER ■ GRAIN

# BLAIR FEED MILL

Phone: 426-2425  
 1643 State - Blair, Nebraska 68008



The Source Is...

# WAGONHAMMER RANCHES!

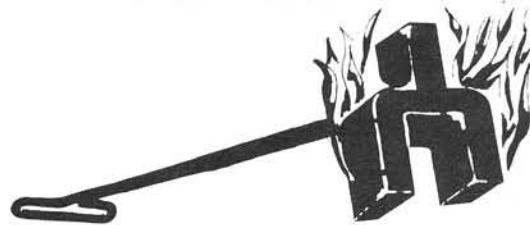
Breeders of Productive, Predictable, Practical  
Cattle with TOTAL PERFORMANCE

Herd Bulls • Range Bulls • Registered Females  
• Commercial Females • Club Calves

*Performance  
Tested*

## ANGUS • CHAROLAIS • SIMMENTAL CATTLE

**Use a Wagonhammer Total Performance Bull  
To Advance Your Herd!**



### WAGONHAMMER RANCHES

Total Performance Cattle  
For Today And Tomorrow

Box 548 • Albion, Nebraska 68620

Jim Wolf, Owner  
402 395-2178

Lamoine Hall, Manager  
Barlett, Nebraska 68620  
308 654-3220

Myron Benes, Sales  
402 395-6962

THE TOTAL PERFORMANCE BRAND !

# Bob's Market



- GROCERIES
- MEATS
- LOCKERS

WE DO CUSTOM  
BUTCHERING & PROCESSING  
CALL FOR APPOINTMENT  
784-3501

VALPARAISO,  
NEBRASKA



## IRRIGATION SALES - PARTS - SERVICE



COLUMBUS IRRIGATION  
& FARM EQUIPMENT INC.

IRRIGATION 564-4011  
FARM EQUIP. 564-2894  
AFTER HOURS 564-4683 or 564-2354

1127 E. 23rd ST.  
E. HIGHWAY 30 - COLUMBUS

# STATE FAIR LIVESTOCK AWARD

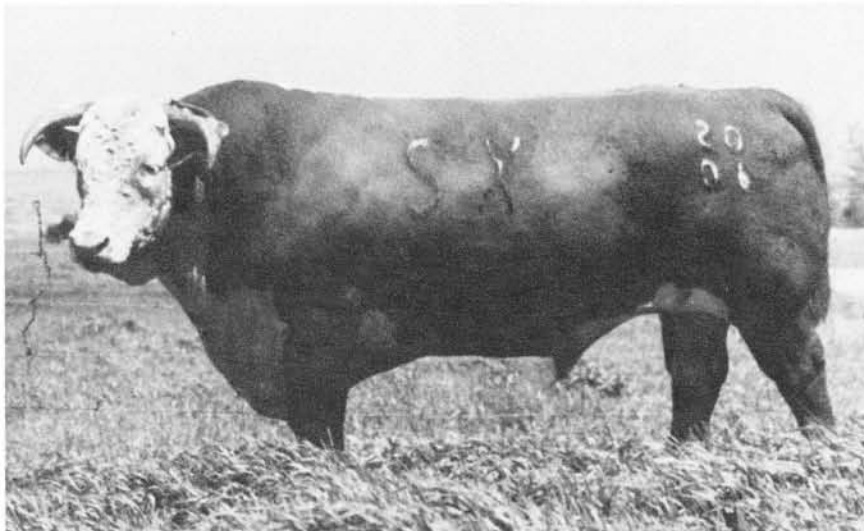


Susan Schlake of Firth received a trophy from the University of Nebraska-Lincoln Block & Bridle Club when her entry was announced tops in the 4-H beef carcass contest at the 1979 Nebraska State Fair. She accepted the award from Block & Bridle Queen Mary Bargman of Beatrice. Susan, 14-year-old daughter of Mr. and Mrs. Vernon Schlake, also received \$100 from a pool of donors. Her Simmental-Angus-Hereford crossbred steer weighed 1,122 pounds on the hoof in the 4-H beef show at the fair. Its carcass was tops among 207 4-H market beeves which met all contest requirements. In her second year of competition at state fair, the Gage County 4-H'er, who attends school at Adams, found it hard to believe she had won the award, although she and her parents felt earlier her home-raised entry "would make a run for it."

---

## IT ISN'T NECESSARY TO GO EXOTIC TO GET EXTREME PERFORMANCE

**3rd Annual  
SALE  
at the ranch  
Nov. 15th**



**SELLING  
Our 100  
top performing  
Bulls plus  
35 good bred  
Heifers**

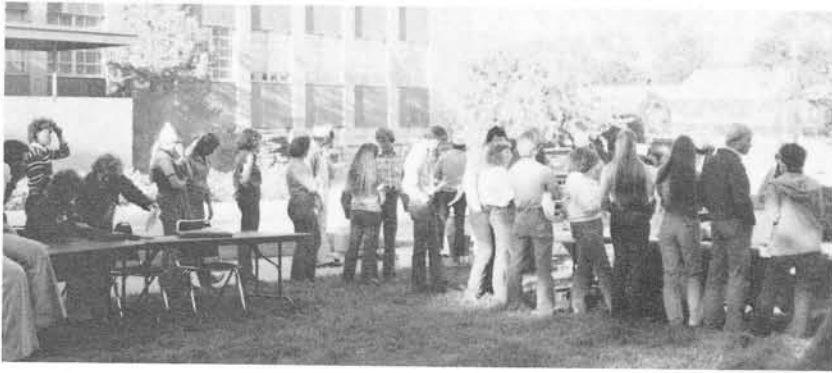
*60 inches tall, 100 inches long. LI Domino 72006, 2730 lbs. of red meat*

When you can use sons of the great inbred, linebred LI Domino 72006. They can give you efficient, rapid gain and finish at the most desirable weight, plus fertility, calving ease, good udders with small teats, gentle disposition, dependability, and more net profit.

**Alfred Meeks  
308-942-5885**

**UPSTREAM RANCH  
Taylor, Ne.**

**Ferrall Meeks  
308-942-8355**



## STEAK FRY

The turnout for the annual Fall Steak Fry was great. Chairman Teresa Vance reported that 193 people attended the event held September 13 on the B&N lawn. The advisors grilled the steak sandwiches that were enjoyed by all. Baked beans, beans, fruit salad and iced tea were also served.

After the meal, Department Chairman, Dr. Irvin Omtvedt welcomed the new initiates and returning members of Block and Bridle. He introduced the Animal Science faculty members and the advisors for the club. A slide show was given to introduce the initiates to Block and Bridle activities.



## KID'S DAY

The Year of the Child and the largest attendance ever made Kid's Day 1979 extra special.

The theme of this year's event was "The International year of the Child." Each pen of animals was labeled as to country of origin.

Approximately 700 children from Lincoln schools attended. This was 200 more than last year.

The purpose of Kid's Day is to educate and entertain inner-city children who aren't familiar with farm animals.

The display of animals included ponies, rabbits, lambs, pigs and poultry.

The children were also treated to cookies & Koolaid.



## LITTLE AK-SAR-BEN

Little AK-SAR-BEN Showmanship Contest was a "smashing" success this year with 80 students participating. It was held October 6th in the judging pavilion and was well attended by many students, club members, parents, and faculty members.

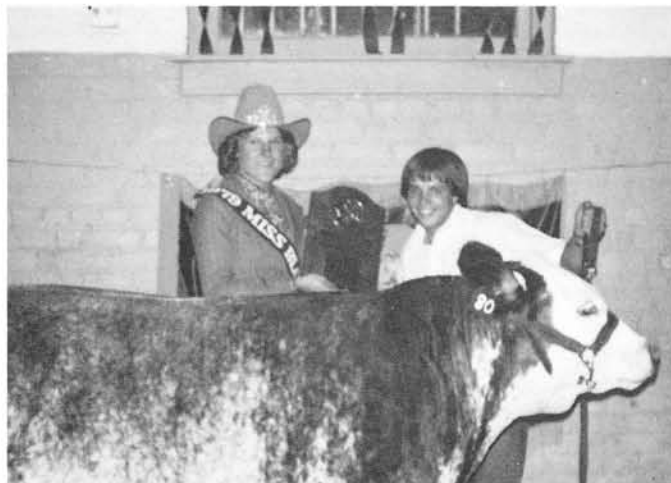
The contest measures the participants' skills in horse, dairy, swine, sheep, and beef showmanship. Each contestant is supplied with an animal one week before the contest to train and groom. The participant is judged on his or her presentation and grooming of the animal.

The winner of each "Novice" division earn the opportunity to compete in the "Expert" division competition. The winners of each division then compete in a final "Round Robin" competition, showing an animal from each of the five areas.

A Grand Champion and Reserve Champion Showman were selected. The plaques and ribbons were provided by AK-SAR-BEN and the cash awards were given by Block and Bridle. Block and Bridle Queen Mary Bargman presented the awards.

Winners in the "Novice" divisions were: Sheep, Lea Anne Winget, Marsland; Dairy, Don Brainard, Elwood; Swine, Betty McCutchen, Nelson; Beef, Kathy Pool, Papillion.

Judges for the contest were Sheep, Gayle Hatten, Wahoo; Dairy, George Woolsey, Clay Center; Swine, Max Hoffman, Burchard; Horse, Mark Nelson, Lincoln.



1.



2.



3.



4.

1. Jay Schroder of West Point won the Beef Division and went on to take top honors as Grand Champion Showman.
2. Jan Volk, Battle Creek, was top swine showman and Reserve Champion Showman.
3. Deb Hamernik from Columbus was top horse showman.
4. Sandy Johnson, Blair, was the top sheep showman.
5. Is this playing around what caused the bleachers to fall down?
6. Penni Price, Lincoln, won a plaque for top dairy showman.



5.



6.

# 1980 BLOCK & BRIDLE QUEEN CANDIDATES



*Left to Right:* Kerri Votaw, 20, daughter of Mr. & Mrs. Eli Votaw of Wellfleet, is a junior majoring in special education and human development. She is a member of Alpha Chi Omega sorority, an Alpha Gamma Rho Rho-Mate, and a member of the Nebraska Junior Angus Association. She also served as a co-chairman for Kid's Day.

Teresa Vance, 20, daughter of Mr. & Mrs. Wallace Vance of Red Cloud, is a junior majoring in animal science. She is active in Union Program Council, University 4-H, and Alpha Gamma Rho Rho-Mates. This year she served as chairman for the Steak Fry.

Willow Krause, 20, daughter of Mr. & Mrs. Howard Krause of Alliance, is a junior majoring in animal science. She is a member of Alpha Zeta, University FFA, University 4-H, and the Meats Judging team. She is presently serving as the Block & Bridle Treasurer.

Suzy Kowalski, 20, daughter of Mr. & Mrs. John Kowalski of St. Paul, is a junior majoring in animal science. She is currently secretary of Block & Bridle and is active in Burr Hall sports.



## 1980 BLOCK & BRIDLE ROYALTY



Willow Krause (left) was crowned the 1980 Block & Bridle Queen and Kerri Votaw (right) was named Block & Bridle Princess at the Alumni Dance held in the East Union. The dance and the coronation was well attended. The Master of Ceremonies was Louise Beyea and she was assisted by Mary Bargman the 1979 Block and Bridle Queen. Music was provided by the County Raiders.



# DON RINGLER AWARD



*Left to Right: Dr. Dwane Zimmerman, club advisor; Dr. Ted Doane, club advisor; Gerri Monahan, vice-president; Mark Iodence, President; Ringler's wife Phyllis; mother Mrs. Eric Ringler; and brother Robert.*

Don Ringler was honored posthumously as a Block & Bridle Honoree. Ringler was a Seward High School and University of Nebraska graduate. He was raised on a farm in Seward County and served as president of his FFA Chapter.

He began his newspaper career in Blair, Nebraska, and worked for papers in Newton and Charles City, Iowa, and Kankakee and Rockford, Illinois before coming to the Omaha World Herald.

In 1978 he was named regional vice-president of the Newspaper Farm Editors of America.

Ringler joined the Omaha World Herald in 1967. In 1978 he was named National Farm Writer of the Year by an organization of fellow reporters and editors. He was selected in March of 1978 as the national winner in farm news competition sponsored by the Newspaper Farm Editors of America. In 1970 he received the top prize in the Nebraska Associated Press Association's news writing contest for his comprehensive story on the state's boxcar shortage. He was presented an Oscar in Agriculture Award by DEKALB Ag Research Inc. in 1976 for his story describing problems associated with irrigation in Nebraska. The triumph of Agriculture Exposition honored him in 1977 with its Agri Award for his "informative contribution to farmers, ranchers, and agricultural industries." Among the groups giving Service Awards to Ringler for his farm coverage were the FFA, the Nebraska Association of Soil and Water Conservation and the Mid-America Dairymen Inc.

# BENES CATTLE COMPANY

**For Sale:**  
Charolais & Simmental  
Proven Quality  
Breeding Stock



**Also**  
Club Calves

## **"BRC Miss Atlas Benes 865"**

11 times Champion Charolais Breeding Heifer,  
including 1979 Nebraska 4-H, AK-SAR-BEN, and  
Nebraska State Junior Charolis Show.



## **"Hulk"**

4 times GRAND CHAMPION Steer  
including GRAND CHAMPION 1978  
Nebraska State Fair.



## **"Mike"**

1979 AK-SAR-BEN  
DIVISION III CHAMPION

# ERMIN BENES & SONS

Ph.  
(402)-784-2854  
(402)-784-3604

Valparaiso, Nebr.

1 mile south  
3 miles west

# COUPE DE VILLE YORKSHIRES

★ Primary  
SPF  
Herd



★ Health  
Performance  
Satisfaction

Dick Coupe  
Rt. 1 Box 81  
Malcolm, Ne 68402  
Ph. 402-796-2144

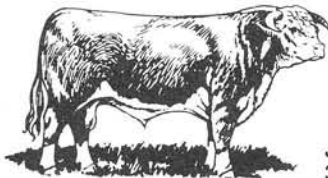


## MONAHAN CATTLE COMPANY Hyannis, Nebraska

*Breeders of Purebred and Commercial  
Hereford Cattle*

**Purebred Bull Sale—October 23, 1980**

*Visitors Welcome*



Earl Monahan  
308-458-2403

James A. Monahan  
308-458-2406

## LIKENS FAMILY FARMS

**Registered Quarter Horses  
and Registered Suffolk Sheep**

**Steele City and Endicott, Nebraska  
442-2373 729-5808**

## ADAMS STATE BANK

**Adams, Ne. 68301**

member FDIC

*A full service bank,  
serving you since 1918.*

## HAM SALES



The club's money making activity of the year—Ham Sales. This year the club sold over 20,000 pounds of Hormel Cure 81 boneless, smoked hams and made a net profit of over \$6,000. The hams were purchased from Hormel Meat Packing Plant in Fremont, Nebraska. One-hundred forty-nine club members and initiates participated in the activity. The top five salespersons were: 1) Deb Kleinschmidt, 2) Suzy Kowalski, 3) Don Batie, 4) Mike Krause, and 5) Mark Iodence. Mike Krause was also named the top initiate selling over \$1,500 and Jay Schroeder was the top November salesperson. The top team consisted of Deb Kleinschmidt, Suzy Kowalski, and Don Batie.

Hams were presented to Governor Thone, Little Ak-Sar-Ben judges, Ag Symposium speakers, and were also used for the Christmas Coffee.

We extend a big "THANK YOU" to all the members and initiates who sold hams, to the people who bought hams, to the committee—Suzy Kowalski, Cindy Dunlay, Steve Harris, Teresa Vance, Jay Schroeder, Sandy Johnson, Rhonda Hineine, Marc Milanuk, Patti Hollibaugh, Annette Fritschen, and chairpersons—Kevin Loseke, Deb Kleinschmidt, and Don Batie. A special "THANK-YOU" goes to Dr. Mandigo and the staff at Loeffel Meat Lab for all the extra time and help they spent with ham sales.

To officially kick off the sales, the committee presented a complimentary ham to Governor Charles Thone. Pictured from left to right are Governor Thone, Don Batie, Deb Kleinschmidt, and Kevin Loseke.

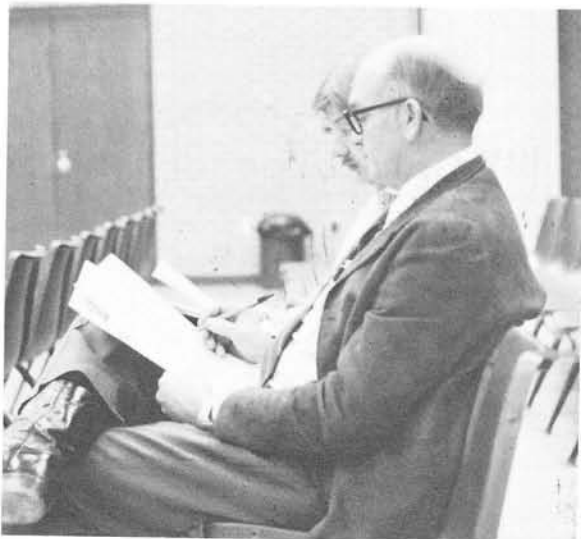


## AG SYMPOSIUM

This year's Ag Symposium was held on Friday, November 16 in the East Union. "The Family Farm and It's Future" was the theme chosen by the club.

A panel discussion was held with speakers Mr. Niel Oxtan, President of Farmers Union; Mr. Rex Messersmith of the Livestock Feeders Association; Mrs. Peggy Hainrichs, member of WIFE; Mr. Glen Vollmar, Head of UNL Ag Economics Department; and Mr. Wendell Gangwish, President of Farm Bureau.

Co-chairpersons Tammy Garey and Patty Lutter reported the event was a success, as over 100 people from all over campus attended.



# CHAPTER MEETINGS

Meetings of the Nebraska Chapter of Block & Bridle are held every other week on Thursday night. At nearly every meeting, a special guest speaker addresses the club on some agriculturally related area. One of this year's highlights, and certainly the largest meeting of the year was the Pizza Party hosted by Elanco in November. Elanco representatives, gave a presentation on job opportunities with the company and other agribusinesses in general. That same night, 65 initiates joined the club and this was followed by an enjoyable pizza party at Valentino's. Members and advisors alike had a good time and a big "THANKS" should go to Elanco for their hospitality.

(1) Jim Moore and Priscilla Musil answer questions posed by club members. (2) The initiates—in their places with bright shiny faces! (3) "Don't be so serious, Jay!"



1.



2.



3.

# CHRISTMAS COFFEE

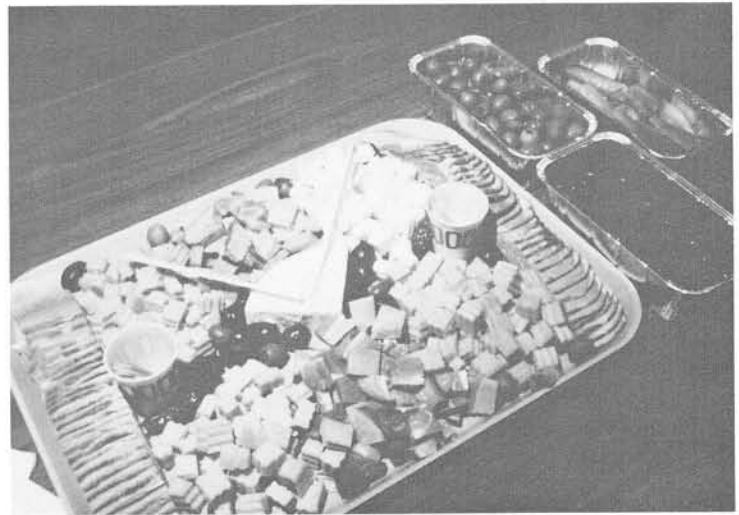
Joyce Felt and Susan Kaczor hosted the 1979 Annual Christmas Coffee on December 12th for the Animal Science Department. Faculty, staff and Block and Bridle members enjoyed the traditional Hormel Cure 81 Ham, cheese, and cracker brunch. The coffee proved to be a good end to first semester B&B activities. (1) Susan and Joyce serve as hostesses. (2) Gilster digs in!!! (3) Mmm-Mmm Good! (4) The members enjoyed the food. (5) Dr. Omtvedt and Dr. Gosey help themselves.



1.



2.



3.



4.



5.

# Z\Z Top Ranch

## Simmental Cattle

Rt. 2                      Kearney, NE                      Phone  
Box 340                      68847                      308-893-3958



Bulls, Heifers  
Club Calves



Garry McNew  
LeAnn McNew



## Furby Quarterhorses

Standing

Tinky Bandit  
- Sire Might Tink (AQHA Champ)  
Beatle Wind—Sire Beatle Win (Supreme Champ)  
Pesky's Buck Bar—Sire Buck's Bar None (Champ AAA)

## POLLED HEREFORD CATTLE

Albion, NE  
68620

Mel, Donna & Kathy  
(402)-678-2419

## TERRY'S FEED & SUPPLY



WAYNE & HUBBARD FEEDS

NORTHROP KING SEEDS



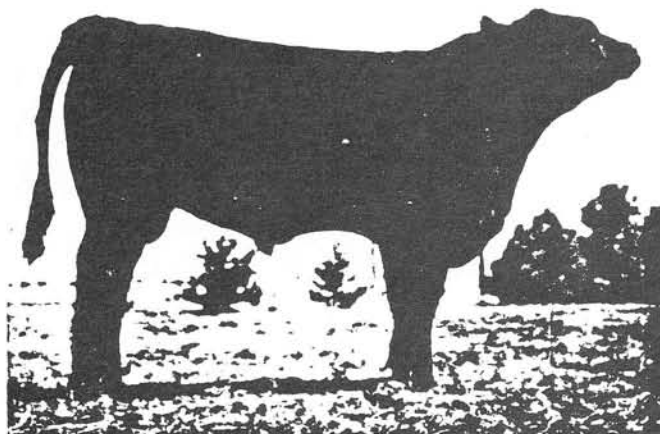
*Complete Lawn & Garden Care Center*

826-3480

• DOG • CAT • RABBIT PET FOODS

CRETE

## WE ARE BUILDING OUR FOUNDATION HERD ON QUALITY YOU CAN BANK ON



BLACKCAP MARSHALL SA 78

K & K's Breeding Program  
is based on these outstanding sires:

Ken Caryl Mr. Angus 8017  
Sir Wms Warrant  
Blackcap Marshall SA 78

*Visitors are always welcome to stop by  
anytime to see this young, progressive herd*

## K & K Cattle Company

Rt. 3

KEARNEY, NEBRASKA

Kent & Kerry Jorgensen

308-234-3347



# Quality Breeding Stock At All Times



*BIGUN—(Son of Abricot)—Senior Herdsire*

## CANADAY SIMMENTAL RANCH

*8 years on-the-farm production testing  
Simmental Production sale each year in March.*

*Julian Canaday  
Bloomfield, Ne 68718*

*Visitors Welcome  
Phone 373-4482*

**E/V**

*Where Quality is Bred In Before the Brand Goes On*

SINCE 1937

**E/V**

THESE TWO NEW SIRES HAVE JOINED OUR IMPRESSIVE HERD BULL BATTERY



**BALDRIDGE CRACKER JACK 179**

Our \$60,000 yearling  
Follow his show career in 1980



**MARSHALL PRIDE 0331**

Grand Champion Angus Futurity Bull  
1980 Iowa Winter Beef Expo

ANNUAL PRODUCTION SALE  
MONDAY, FEBRUARY 16, 1981



REGISTERED BREEDING STOCK.  
AVAILABLE AT ALL TIMES

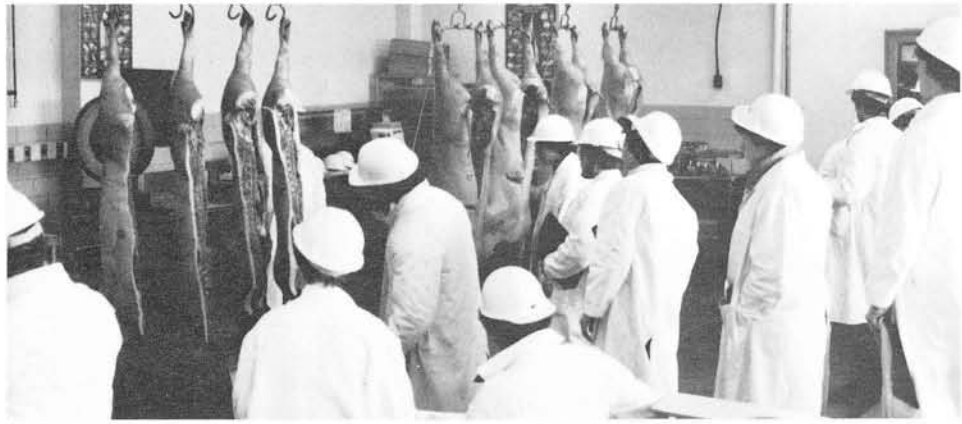
## E BAR V ANGUS RANCH

Mr. & Mrs. Eli Votaw  
Owners  
308/963-4459

WELLFLEET, NEBRASKA 69170

Kerri and Kathy  
Christy Vinton

# MEATS JUDGING CONTEST



1.

The Meats Judging Contest was held on March 8, 1980 in Loeffel Meat Lab. There were many eager contestants in the junior division along with veteran individuals in the senior division.

An introductory session was held on March 7, 1980 to better inform those contestants who had never judged meats before. Ribbons were given to the top individuals in each division and category. Thanks go to Butch Henderson and Tim Davis, Co-chairmen of the event!



2.

### *JUNIOR DIVISION*

#### Overall Winners:

1. Mike Imig
2. Kevin Large
3. Rick Hagge
4. Jayne Witte
5. Brent Nisley

#### Grading Winners:

1. Brent Nisley
2. Mike Imig
3. Kevin Large
4. Rick Roncka
5. Mark Rosenquist

#### Judging Winners:

1. Sally Klein
2. Trudy Stehlik
3. Mike Imig
4. Brad Worman
5. Jayne Witte

### *SENIOR DIVISION*

#### Overall Winners:

1. Willow Krause
2. Tim Cech
3. Cindy Dunlay
4. Janet Svoboda
5. Kathy Pool

#### Grading Winners:

1. Willow Krause
2. Cindy Dunlay
3. Tim Marlatt
4. Tim Cech
5. Dave Bracht

#### Judging Winners:

1. Willow Krause
2. Tim Cech
3. Kathy Pool
4. Cindy Dunlay
5. Janet Svoboda

1. These contestants begin testing their carcass judging skills.
2. Dave Bracht, Sandy Johnson, and Willow Krause examine these cuts.
3. I can't wait to see the lambs!



3.

# SPRING TOUR



1.

This year's Spring Tour began at 6:00 a.m. on Saturday, March 29. Thirty-three members, Dr. Keith Gilster, Club Advisor, and Dr. Irv Omtvedt, Department Head were able to make the trip. Although snow, rain, and cold weather accompanied our tour, we were able to learn a few things while also having a great time!!

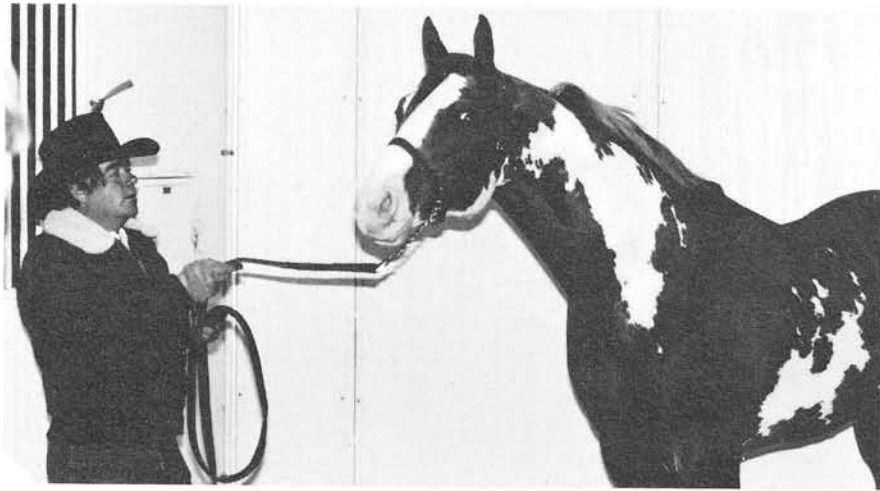
Our first stop was at Hastings Pork, one of the largest pork producing operations in Nebraska. We then stopped at the TC Ranch in Franklin and saw some of Vance Uden's top Angus cattle. Our final stop of the day was in Colby, Kansas at the KSU Sheep Research Center. The next morning found us snowed in, but eventually able to reach Castle Rock, Colorado and the Three Oaks Stallion Station. We spent the night in Denver and left Monday morning for Golden, Colorado and the Coors Brewery. That afternoon was spent touring the Colorado State University's Animal Science facilities and embryo transplant station. On Tuesday we visited Ankony Shadow Isle, home of Dynamo, a top Angus bull. We also stopped at Granada, a large cattle feedlot. From there it was on to the Iodence Hereford ranch. Tuesday night was spent in Alliance at the homes of Willow and Mike Krause. Wednesday morning, once again, came with much snow! Along the way home we were able to stop in Ogallala at the Bull Test Station. A big thank you goes to Suzy Kowalski and Kathy Auch for organizing the tour!!



2.



3.



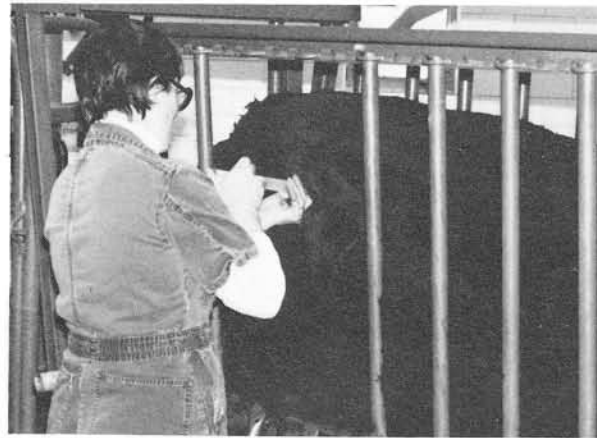
4.

5.



1. What an "awesome" looking group!
2. Touring inside of a Hastings Pork barn.
3. Vance Uden shows off some of his flashy Angus heifers.
4. George Martin, of Three Oaks Stallion Station, shows us Ratchet, a top halter stallion in the Paint Horse Association.
5. What lovely weather to tour a feedlot!
6. While at CSU in Fort Collins, several demonstrations of embryo transplants in beef cattle were seen.
7. "Go for it Chief!"

6.



7.



# QUADRATHALON



1.

A new event, sponsored by Block & Bridle this year was the Quadrathalon. Competition by nine teams consisting of four members per team was held on April 15-17. Each team participated in four events. These included a Lab Practical (such as feed identification, sex determination of chickens, meats identification, castration, palpation, and hoof trimming); Written Examination (covering Animal Breeding, Physiology, Nutrition, Meats, Dairy, Horse, Beef, Swine, Sheep, and Poultry); Oral Presentation; and the Quiz Bowl.

Plaques were presented to the top two teams overall, with each team member receiving a medal. The top team consisting of Butch Henderson, Layne Anderson, Kevin Large, and Dan Magill is now eligible to compete at the National Contest. A big Thank You goes to the Animal Science faculty for writing questions and organizing the event. Also, thanks to the co-chairmen Mark Iodence, Mary Bargman, Lyn Hagan, and Jim Todd.

## OVERALL

1. RB's Boy's
2. Farmhouse #1
3. Alpha Gamma Rho #1

## Lab Practical

1. Farmhouse #1
2. Alpha Gamma Rho #1
3. RB's Boy's

## Oral Presentation

1. RB's Boy's
2. Farmhouse #1
3. Misfits

## Written Exam

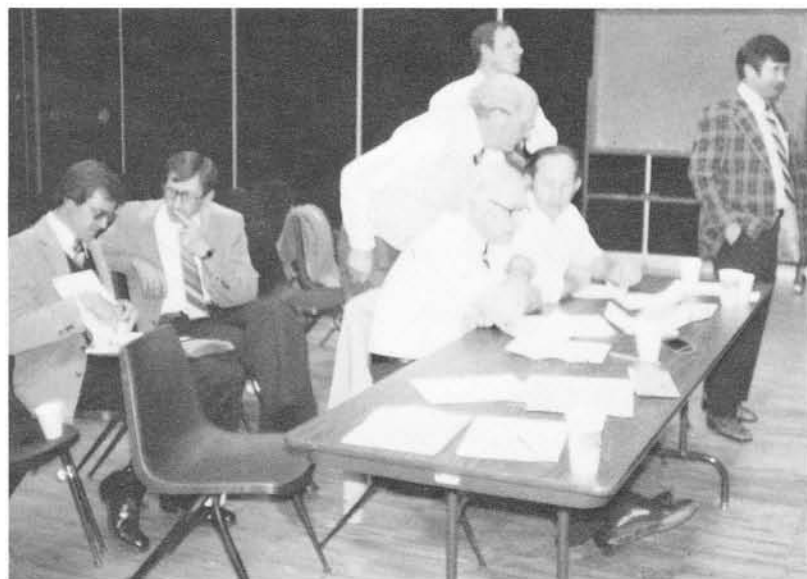
1. RB's Boy's
2. Farmhouse #1
3. Alpha Gamma Rho #1

## Quiz Bowl

1. RB's Boy's
2. Loveday's Lovelies
3. Farmhouse #1



2.



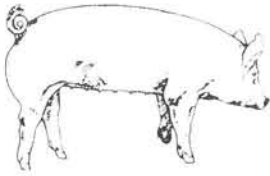
3.

1. Early Round Quiz Bowl Competition.
2. Trimming a hoof was just one station in the Lab Practical.
3. What an organized, well-informed, group of judges!

# CAMMACK FARMS

## We Raise Quality Livestock

Purebred SPF Yorkshire Hogs



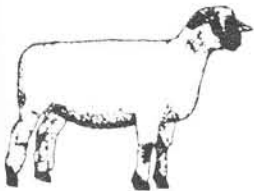
Closed primary herd  
All pigs weighed and probed

Purebred Angus Cattle



18 years of performance testing  
Bloodlines—U of N Bardoliermere, Rito 119,  
War Rito 3030, Band 116, Band 105

Purebred Hampshire Sheep



Selected for growth rate, meat-type, twinning  
Performance tested for 30 years

George Cammack  
and family

DeWitt, NE 68341

Phone 402-683-3415

# MINDEN BEEF CO.



Est. 1914 M

## CARCASS BEEF & OFFAL

P.O. BOX 70  
MINDEN, NEBRASKA

WILLIAM E. MAHAR, Mgr.

### T-BONE FEEDLOTS, INC.

Phone 402-726-2200 — 402-726-2215

Manager, Warren Mitchell

FAIRFIELD, NEBRASKA 68938



Commercial  
Cattle Feeding

Grain & Livestock  
Hauling

Golden Harvest  
Seed

## First National Bank

*Established In 1888*

Unadilla,  
Nebraska 68454

## Don Vandertook

Auctioneer & Real Estate

**Phone 788-2210**

**Panama, Nebr.**

**Shea R.E.**

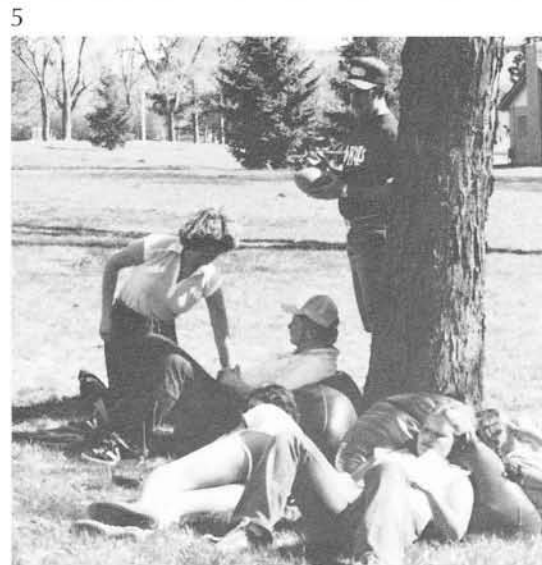
# SPRING PICNIC



The annual Spring Picnic was held on April 20, at Antelope Park. Approximately 75 people attended making the afternoon a success. A special thanks to Dr. Mandigo who helped prepare the meal which B&B members served. Ribbons were then awarded to the Meats and Livestock Judging Contest which was held on April 19th.

Softball, volleyball, and enjoying the sun occupied the time of members as the day was sunny and warm. Chairman Ann Henderson did a good job in organizing the event.

1. Patti, Tammy and Suzy take the food to the park. 2. "No Marilyn, we're only here for the beer!" 3. "Get the ball over!" 4. Mary hands out ribbons 5. "Doesn't anyone want to play ball?"





# 25TH ANNUAL BLOCK & BRIDE QUARTER HORSE SHOW



1



2



3



4

This year's Quarterhorse Show was termed a "huge success" by Co-chairmen Cindy Dunlay, Bob Soucie, and Kathy Pool. The show was held April 10-11 at the State Fairgrounds, with Max Tappero of Forest, VA serving as the judge.

Over 660 entries maintained the usual high standard of quality and competition. A total of 423 adults, 200 youth, and 31 cutting entries were shown, which again established an "A" show by AQHA standards. Presenting the awards was Miss Willow Krause, 1980 Block & Bridle Queen.

Twelve year-old Elizabeth McGowen of Ulysses and her horse, Skip's Schoolgirl won the All-Around Youth Title. The All-Around Horse Title was won by Golden Cherokee owned by Jim Hayes of Bennington for the second consecutive year.

A special thanks goes to Marvin Copple of Lincoln for once again donating the trophy saddle given to the All-Around Horse.



- 5
1. And after the show—the clean-up!
  2. The grand champion stallion, Zippo Cash Bar, is owned and shown by Tom Forst of Elkhorn.
  3. Sister Brandywine, owned by Margaret Dumbrowski of Omaha and shown by Bud Bassinger was named grand champion mare.
  4. Winning grand champion gelding honors was Zippo's Johnny Two, owned by Sharon Alexander of Omaha and shown by Tom Forst of Elkhorn.
  5. For the second straight year, Golden Cherokee, owned by Jim Hayes of Bennington, was named All-Around Quarterhorse. Pictured are Kathy Pool, show co-chairman; Kevin Loseke, B&B President; Jim Hayes; Willow Krause, B&B Queen; Cindy Dunlay and Bob Soucie, Co-chairmen of the show. The saddle was donated by Marvin Copple of Lincoln.
  6. Brian Kissinger, of Glenvil, won the youth Western Pleasure Class (13 & under) with his horse Miss Crown Skip.
  7. The Youth Western Pleasure Class (14-18) was won by Margaret Dumbrowski of Omaha, and her horse Sister Brandywine.
  8. Kristin Berry of Lincoln rode Shannon Pine to first place in the Youth Western Horsemanship Class (13 & under).
  9. Named champion in the Youth Western Pleasure Class (14-18) was Shari Morrison of Lincoln and her horse Kachena.



6



7



8



9

# DAIRY CATTLE JUDGING TEAM



Hoy Bailey

Mark Meysenburg

Franklin Eldridge (coach)

Dennis Drudik

Dale Livermore

## Results on National Dairy Cattle Judging Contest World Dairy Expo Madison, Wisconsin October 3, 1979

41 teams (123 contestants)

	UN Individual		UN Team
Brown Swiss	Bailey	46th	30th
	Maysenburg	51st	
Guernsey	Maysenburg	31st	31st

## Results on Midwest Invitational Intercollegiate Dairy Cattle Judging Contest Waterloo, Iowa September 25, 1979

18 teams (54 contestants)

	UN Individual		UN Team
Ayrshire	Bailey	15th	7th
Brown Swiss			11th
Guernsey			11th
Jersey	Bailey	12th	10th
Holstein	Drudik	4th	
Overall			13th

# SENIOR LIVESTOCK TEAM



Left to Right: Dr. Irv Omtvedt, Head of Department of Animal Science; Patti Hollibaugh, Chris Buechle, Bryan Henderson, Jay Volk, Dan Magill, Steve Kile, Kevin Large, Sam Smith, Layne Anderson, George Marcy, Kathy Auch, Karla Bluhm, and Coach R. B. Warren.

Quarterhorse Congress  
Columbus, Ohio

Team 7th/26

American Royal  
Livestock Judging Contest

Team 6th/26

North American  
Livestock Exposition

Team 4th/40

Mid South  
Livestock Judging Contest  
Memphis, Tennessee

Team 7th/34

# JUNIOR LIVESTOCK AND MEAT ANIMAL EVALUATION TEAM



BACK ROW (Left to Right): Coach Dr. Loveday, Brent Nisley, Kelly Kreikemeier, Mike Imig, Mark Rosequist, Frank Goedeken, Bradley Worman, Willow Krause, Craig Uhrig, Don Kracke, Coach R. B. Warren.

FRONT ROW (Left to Right): Kathy Pool, Tim Cech, Rick Hagge, Rick Roncka, Marc Milanuk, Galen Loseke, Layne Anderson, Sally Klein.

## Junior Livestock National Western Stock Show Denver, Colorado

### Livestock Contest Team 12th/29

Kelly Kreikemeier—900 pts.  
Rick Hagge—861 pts.  
Don Kracke—857 pts.  
Sally Klein—845 pts.  
Craig Uhrig—841 pts.

### Carlot Contest Team 1st/27

1st—Marc Milanuk—294 pts.  
2nd—Galen Loseke—293 pts.  
Rick Roncka—283 pts.  
Randy Saner—281 pts.  
Larry Benson—264 pts.

## Meat Animal Evaluation Contest Omaha, Nebraska

### Team 6th/18 Team members: (2480 possible)

Tim Cech—2102 pts.  
Tim Marlatt—2065 pts.  
Kathy Pool—2053 pts.  
Mike Imig—2050 pts.

# 1980 SENIOR MEATS JUDGING TEAM



Left to Right: Coach Dr. Dwight Loveday, Assistant Ann Hollingsworth, Tim Cech, Steve Hulme, Willow Krause, Tim Marlatt, Cindy Dunlay, Craig Uhrig, Kathy Pool, Department Head Dr. Irv Omtvedt.

## AMERICAN ROYAL 1979 (22 teams) Overall Team—8th

Beef Judging—9th (Cindy Dunlay—1st)  
Beef Grading—6th (Tim Cech—4th)  
Pork Judging—3rd (Tim Cech—8th)  
Lamb Judging—16th

Team Members (1000 points possible)  
Tim Cech 889 (5th)  
Cindy Dunlay 871  
Kathy Pool 842  
Willow Krause 824  
Alternates: Steve Hulme, Tim Marlatt

## International 1979 (22 teams) Overall Team—7th

Beef Judging—3rd (Willow Krause—2nd)  
Beef Grading—10th  
Pork Grading—8th (Willow Krause—6th)  
Lamb Judging—9th (Cindy Dunlay—7th)

Team Members (1000 points possible)  
Willow Krause 910 (4th)  
Tim Marlatt 904  
Tim Cech 891  
Cindy Dunlay 888

# 1980 JUNIOR MEATS JUDGING TEAM



BACK ROW: (left to right): Department Head Dr. Irv Omtvedt, Assistant Ann Hollingsworth, Steve Kliever, Doug Jones, Mike Neary, Dave Bracht, Jeff Baldrige, Lin Jeffres, Jay Schroeder, Coach Dr. Dwight Loveday.

FRONT ROW: (left to right): Jane Pauley, Sheri Horn, Janet Svoboda, Sandy Johnson.

## NATIONAL WESTERN MEAT JUDGING CONTEST

Denver, Colorado

Team 4th/10

Team Members (1000 points possible)

Sandy Johnson 894 (8th)

Jane Pauley 891 (10th)

Janet Svoboda 880

Lin Jeffres 871

Alternates: Mike Neary, Sheri Horn

Beef Judging—3rd  
Beef Grading—2nd  
Pork Judging—4th  
Lamb Judging—7th

## SOUTHWESTERN MEAT JUDGING CONTEST

Fort Worth, Texas

Team 4th/7

Team Members (1000 points possible)

Jay Schroeder 875 (5th)

Sheri Horn 864

Dave Bracht 854

Sandy Johnson 847

Alternate: Doug Jones

Beef Judging—3rd  
Beef Grading—3rd  
Pork Judging—6th  
Lamb Judging—3rd

# LIVESTOCK JUDGING CONTEST



The Livestock Judging Contest was held April 21st at the Judging Pavillion. Over 160 contestants competed for ribbons, cash prizes, and gold watches for the top team members. Students were divided according to their experience in judging at college level. A big thank you goes to Don Krake and George Cooksley, chairmen of the event.

## JUNIOR DIVISION

1. Glenn Von Seggern
2. Gary Nelson
3. Rhonda King
4. Glen Peterson
5. Les Vogler
6. Mike Thomas
7. Galen Loseke
8. Doug Frels
9. Les Leech
10. Greg Ridder

## TOP TEAMS

1. Block & Bridle #1
2. Harper
3. Alpha Gamma Rho

## SENIOR DIVISION

1. Steve Kile
2. Chris Buechle
3. Layne Anderson
4. Patti Hollibaugh
5. Kevin Large
6. Butch Henderson
7. Dan Magill
8. Sam Smith
9. Jay Volk
10. Doug Zalesky

## A winning program with winning Hampshires



Dave McReynolds as he receives the plaque for the Champion Carcass Barrow at the 1979 National Hampshire Summer Conference.

Our barrows win when shown in carcass contests—whether at the county fair, Nebraska State Fair, or National Hampshire Conferences!

Our August and September boars and gilts are now weighed, probed, and health checked.

In 1980—make sure the breeding stock you buy is officially checked for both health and performance.

Buying breeding stock here will take the gamble out of adding new bloodlines—all-ways.

You can be sure with McReynolds accredited SPF Hampshires

**Guy E. & Dave  
McReynolds** R-2, Ashland, NB 68003  
A.C. 402 [Guy] 944-2398  
[Dave] 944-2397

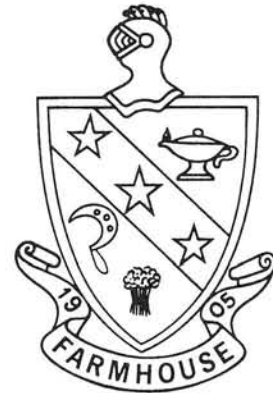




# **FARM HOUSE**

## **FRATERNITY**

*“Building Men at the University  
of Nebraska Since 1911”*



### **Farm House Fraternity**

*Dan Drovot, President*

3601 Apple

Lincoln, Nebraska 68503

(402) 464-0288

# Nebraska Gooseneck Trailer Sales

4945 North 56th  
Lincoln, NE 68504

Ph. 402-464-3206

# Alda Gooseneck Trailer Sales

Highway 30  
Alda, NE

Ph. 308-381-0377

308-382-0562



Flatbeds

Stock & Horse Trailers  
Any Size Trailer Available

Grain Trailers

DON FREDERIKSEN

104 Mercury Court  
Alda, NE 68810

## WAYNE FEEDS

HORSE FEEDS  
PET FOODS



**"FOR INFORMATION CALL"**

DEALERS

SUPPLY SERVICE

2101 R . . . . . 474-3252



**FARMERS ELEVATOR COMPANY**  
**Adams, Nebraska 68301**

A. E. BACHMAN



TOM WIECK



# GRAND ISLAND LIVESTOCK AUCTION, INC.

**Grand Island, Nebraska 68801**

CATTLE AUCTIONS EVERY WEDNESDAY  
HOG AND SHEEP AUCTIONS EVERY TUESDAY

AREA 308  
TELEPHONE 382-8285

**COUNTRY CHEESE CORNER**



Where Quality Dairy Products Are Available From The Home of Beautiful Cows

**... FLYNN FIELD FARM ...**  
 1138 Adams Street Blair, Nebraska 402-426-2786

**Bar M Western Store**

Quality Lines of Western Wear & Tack  
 Blackhills Gold & Turquoise Jewelry

**Burwell, Nebraska**  
**Phone: (308) 346-4810**

Margaret Malmsten, *Owner*



**YOACHIM FEED SERVICE**

**Rt. No. 1**  
**Belvidere, NE 68315**  
**Phone 768-6742**

*Call us before you buy!*

**Just Common Sense . . .**

**CHAROLAIS**

WHEN IT COMES TO \$\$\$ IT MAKES A LOT OF \$\$\$ TO BANK ON **QUALITY** BEEF CATTLE. **CHAROLAIS** IS YOUR TOP BEEF BREED . . . WITH QUALITY AND PERFORMANCE ASSURED. DON'T KEEP YOUR BANK ACCOUNT WAITING!!!

\$\$\$      \$\$\$      \$\$\$      \$\$\$

**Buy CHAROLAIS Bulls to Produce the Right Calves to Make YOU MORE MONEY**

*Write For Membership Directory*

\*\*\*\*\*

**Junior Steer Show, York, June 7 & 8**



**NEBRASKA CHAROLAIS ASS'N.**

**Mrs. Ray Arnold, Secy. Trumbull, Nebr. 68980**

# "THANK YOU"

The Block and Bridle Club would like to express its gratitude to the people and firms who helped make the 1979-1980 school year a memorable one.

Dr. Irv Omtvedt, Chairman Animal Science  
Dr. Jim Gosey, advisor  
Dr. Ted Doane, advisor  
Dr. Keith Gilster, advisor  
Dr. Roger Mandigo, ham sales  
Coach R. B. Warren  
Coach Dwight Loveday  
Bob De Voogd, Kid's Day Livestock  
Waverly High School, Kid's Day Livestock  
Stan Farlin, Kid's Day Livestock  
Bob Moser, Kid's Day Livestock  
Nebraska SPF Assn.  
Nebraska Pork Producers  
Nebraska Stock Growers  
Cy Winkler  
William Derrick  
Waldo Farms, Inc.  
Security State Bank  
Gooch Feed Mill  
Parr Young Memorial  
Barb Young Sabesta Memorial

UNL Animal Science Faculty  
UNL Animal Science Secretaries  
American Society of Animal Science  
Knights of AK-SAR-BEN  
American Stores  
Marvin Copple, trophy saddle  
Dick Dodds, photographer  
Dan Lutz, photographer  
Nebraska Breeders and Feeders  
Max Hoffman, Little AK-SAR-BEN judge  
Scott Brady, Little AK-SAR-BEN judge  
Mark Nelson, Little AK-SAR-BEN judge  
Gayle Hatten, Little AK-SAR-BEN judge  
George Woolsey, Little AK-SAR-BEN judge  
Omaha Livestock Market, Inc.  
Nebraska Farmer  
George A. Hormel  
Beef Show trophy donors  
Quarter Horse Show trophy donors  
Annual Advertisers



*HOME OF THE HAPPY H!*

**Gary Hullinger**  
Stromsburg, Ne. 68666

Ph. (402)-764-3091  
764-6031

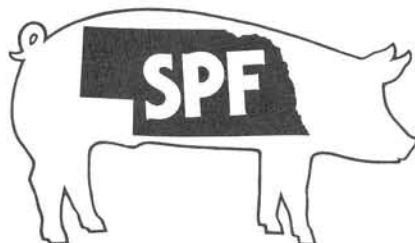
**FEEDER CATTLE, BREEDING CATTLE, AND SHOW CATTLE AVAILABLE AT ALL TIMES**

## AD SUBSCRIBER'S INDEX

- Adams State Bank, 48  
Alpha Gamma Rho, 9  
Alton Gottwald - Limousin, 37  
American Stores, 8  
Bar M Western, 74  
Bauman Agri-Service Inc., 21  
Beatrice Livestock Sales, 32  
Bells Western Wear, 37  
Benes Cattle Co., 47  
Blair Feed Mill, 37  
Bob's Market, 38  
Cammack Farms, 59  
Canaday Farms, 54  
Columbus Irrigation, 38  
Coupe De Ville Yorkshires, 48  
Don Vandertook, 60  
Eberle Farms, 12  
Farmer's Elevator—Adams, 73  
Farmhouse Fraternity, 72  
Feed Service, 13  
Flynn Farm, 74  
Furby Quarterhorses, 53  
Grand Island Livestock Market, 73  
Henderson Herefords, 8  
Hormel, 31  
Hullinger Cattle Co., 75  
J-Bar-L Cattle Co., 21  
K and K Cattle Co., 53  
Likens Family Farm, 48  
L & N Limousin, 22  
McReynolds Hampshires, 41  
Midwest Livestock, 8  
Minden Beef, 60  
Monahan Cattle Co., 48  
Nebraska Charolais Assn., 74  
Nebraska Gooseneck Trailers, 73  
Nebraska Registered Sheep Breeders, 32  
Nebraska Simmental Assn., 22  
Nebraska SPF, (inside back cover)  
Nippert Farms, 22  
Norden Laboratories, 37  
Royal Brothers SPF, 32  
Schleif Implement, Inc., 32  
Spencer Herefords, 14  
Springfield Bank, 13  
Supply Service, 73  
T-Bone Feedlots, 60  
Terry's Feed and Supply, 53  
Uden Feedlot, 22  
Unadilla Bank, 60  
Upstream Ranch, 39  
Volk Hampshires, 21  
Votaw Angus, 54  
Wagonhammer Ranches, 38  
Wagonwheel Charolais, 13  
Waldo Farms, (back cover)  
Washco Feeds, 32  
Yoachim Feed Store, 74  
Z/Z Top Ranch, 53

# Now!

## even meatier hogs from NEBRASKA SPF breeders



If it's performance you want (and who doesn't), you can get it from Nebraska. Nebraska SPF breeders have now set an even tougher performance standard for themselves and the breeding stock they put on the market.

- LESS THAN 1.0 INCH BACKFAT ON BOARS AT 220 POUNDS
- LESS THAN 1.15 INCHES BACKFAT ON GILTS AT 220 POUNDS

That's the new backfat requirement for animals to qualify as accredited Nebraska SPF breeding stock. That's the kind of breeding stock you need to establish a reputation herd in your area.

And don't forget: the **Nebraska SPF** goal is totally healthy hogs

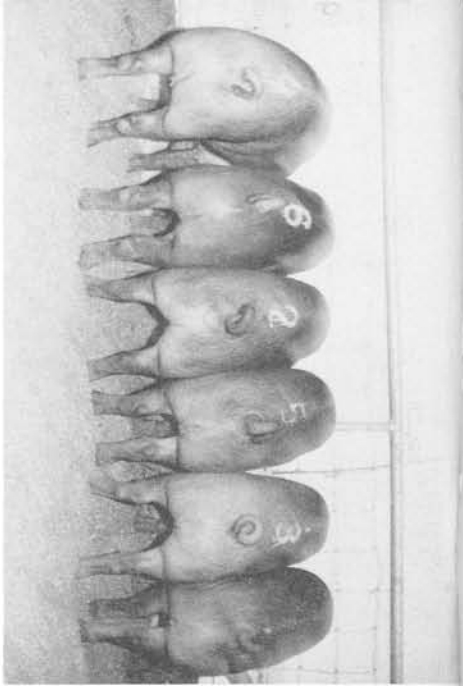
Write or phone now for our latest monthly  
list of stock for sale...



**Nebraska SPF**  
SWINE ACCREDITING AGENCY

105 Vet Basic Science Bldg.  
Fair Street at East Campus Loop  
Lincoln, Nebraska 68583 — 402/472-3818

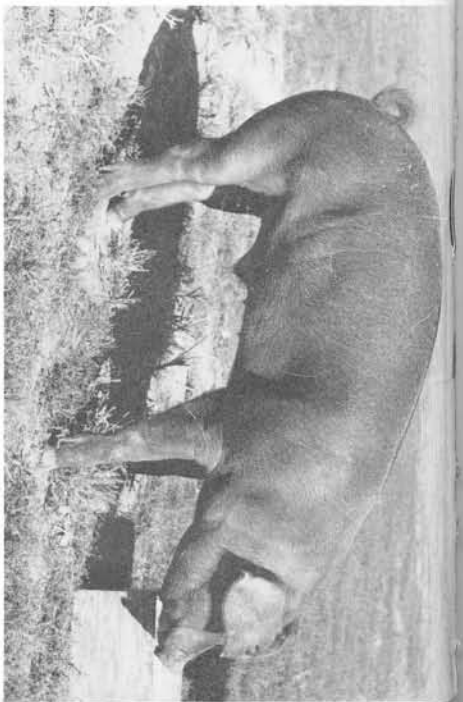
**NEBRASKA SPF PRODUCERS  
CONGRATULATE  
THE BLOCK AND BRIDLE  
MEMBERS  
ON THEIR LEADERSHIP AND  
PARTICIPATION IN THE LIVESTOCK  
INDUSTRY OF NEBRASKA**



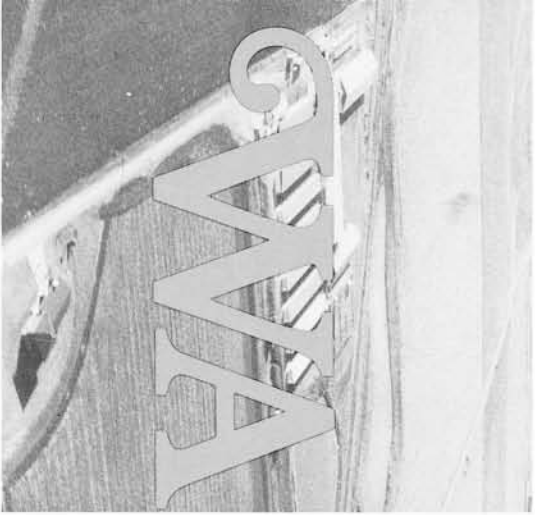
Champion Purebred Truckload 1979 National Barrow Show



Leslie and Lee Waldo with Lee's Champion Market Hog, AK-SAR-BEN '79.



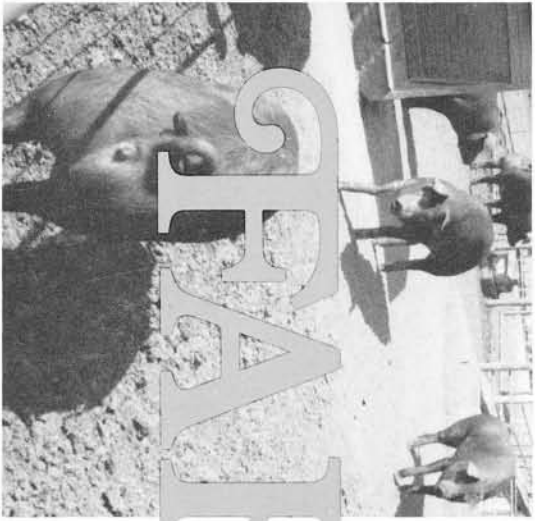
Champion M.E. Barrow 1979 Nebraska State Fair.



WVA



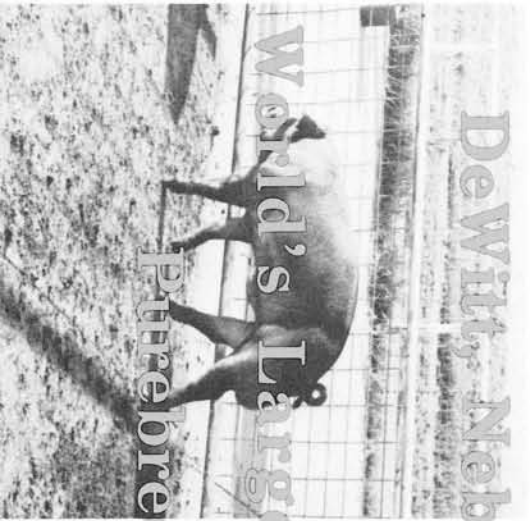
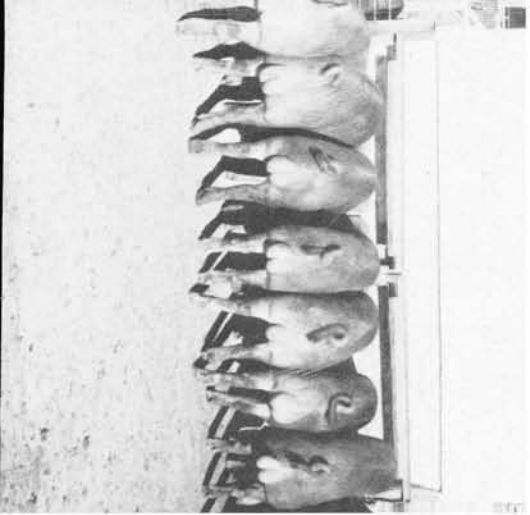
ITDO



FAIRMS



FAIRMS



DeWitt, Nebraska 68834  
World's Largest Recorder of  
Purebred Durocs

