

University of Nebraska - Lincoln

DigitalCommons@University of Nebraska - Lincoln

---

INTSORMIL Impacts and Bulletins

International Sorghum and Millet Collaborative  
Research Support Program (INTSORMIL CRSP)

---

7-28-2008

## INTSORMIL Scientist on VOA Reports a New Approach to Combat Witchweed, a Killer of Sorghum Crops in Africa

INTSORMIL

Follow this and additional works at: <http://digitalcommons.unl.edu/intsormilimpacts>



Part of the [Agricultural Science Commons](#), and the [Agronomy and Crop Sciences Commons](#)

---

INTSORMIL, "INTSORMIL Scientist on VOA Reports a New Approach to Combat Witchweed, a Killer of Sorghum Crops in Africa" (2008). *INTSORMIL Impacts and Bulletins*. 35.

<http://digitalcommons.unl.edu/intsormilimpacts/35>

This Article is brought to you for free and open access by the International Sorghum and Millet Collaborative Research Support Program (INTSORMIL CRSP) at DigitalCommons@University of Nebraska - Lincoln. It has been accepted for inclusion in INTSORMIL Impacts and Bulletins by an authorized administrator of DigitalCommons@University of Nebraska - Lincoln.



**USAID**  
FROM THE AMERICAN PEOPLE



## SPECIAL REPORTS

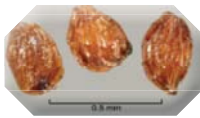
newsVOA.com

### INTSORMIL Scientist on VOA Reports a New Approach to Combat Witchweed, a Killer of Sorghum Crops in Africa

In a May 19, 2008 interview on the Voice of America INTSORMIL scientist Mitch Tuinstra, a Purdue University sorghum breeder, reported on sorghum seed that he and his colleagues have produced that can protect sorghum crops from a weed called *Striga*. Although their target weed has a pleasant looking purple flower it's action is far from pleasant. *Striga* causes six or seven billion dollars in crop damage every year to African grain sorghum.



*Striga*, called 'witchweed' in Africa, is parasitic on sorghum, stealing water and nutrients from sorghum roots. Witchweed has an unusual quality, it requires chemical signals from sorghum seeds to grow. The minute witchweed seeds (less than 0.5 mm) can lie in the soil for years and begin to grow only when they receive the needed chemical signals provided by the presence of sorghum roots. Thus, a fallow period does not control witchweed.



Tuinstra warns that if you see witchweed on your farm, you are in trouble because the plant can completely destroy vast areas of sorghum, is very difficult to remove and it often strikes farmers who work the poorest land. This means disaster for people who already lack enough to eat. To deal with witchweed, researchers developed special sorghum-seed genes which allow these seeds to accept certain herbicides without being harmed and these herbicides on the sorghum seed kill the witchweed as the sorghum grows. Greenhouse tests of the seeds in the Netherlands, and similar studies in sorghum fields in Mali and Niger, showed the treatment to be effective, low cost and safe to farmers.

Tuinstra recently returned from Africa where he met with Malian and Nigerien colleagues who are collaborating in the development of local sorghums that employ the protective genes. The project is funded by the United States Agency for International Development (USAID) and managed by INTSORMIL through grant funding provided to Purdue University, IER in Mali and INRAN in Niger.

