

University of Nebraska - Lincoln

DigitalCommons@University of Nebraska - Lincoln

---

Agronomy and Horticulture Department Monthly  
Newsletters

Agronomy and Horticulture Department

---

9-23-2011

## Agronomy & Horticulture Newsletter, September 23, 2011

Kathy Schindler

*University of Nebraska-Lincoln*, [kschindler1@unl.edu](mailto:kschindler1@unl.edu)

Follow this and additional works at: [http://digitalcommons.unl.edu/agronomy\\_newsletters](http://digitalcommons.unl.edu/agronomy_newsletters)

---

Schindler, Kathy, "Agronomy & Horticulture Newsletter, September 23, 2011" (2011). *Agronomy and Horticulture Department Monthly Newsletters*. 41.

[http://digitalcommons.unl.edu/agronomy\\_newsletters/41](http://digitalcommons.unl.edu/agronomy_newsletters/41)

This Article is brought to you for free and open access by the Agronomy and Horticulture Department at DigitalCommons@University of Nebraska - Lincoln. It has been accepted for inclusion in Agronomy and Horticulture Department Monthly Newsletters by an authorized administrator of DigitalCommons@University of Nebraska - Lincoln.



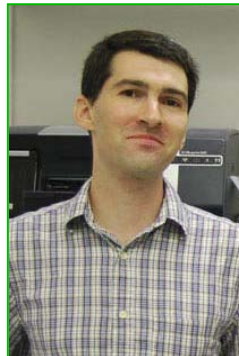
Fall is a good time of year to replant grass and start new perennials. The Nebraska Statewide Arboretum recommends fall planting and is hosting its annual fall plant sale Saturday, Sept. 24 from 9 a.m. to 3 p.m. at the NSA, Inc. Greenhouse, 38<sup>th</sup> & Leighton/Huntington, Lincoln.

## Congratulations to Dr. Gilles Basset

Dr. Gilles Basset received the “Recognition of Junior Faculty for Excellence in Research” award presented by the Agricultural Research Division (ARD) in the Institute of Agriculture and Natural Resources (IANR).

This honor attests to the excellence of Dr. Basset’s research program and to the potential that he has to make outstanding contributions in the future. ARD will hold a reception to honor all recipients of the “Junior Faculty Excellence in Research” award at a future date.

Dr. Basset is part of the Center for Plant Science Innovation at the Beadle Center. His major project activities revolve around: Biosynthesis and metabolism of plant vitamin K1 (*phyllloquinone*), the Role of plant naphthoquinones as antioxidants, and Biosynthesis and metabolism of plant folates.



Dr. Gilles Basset

## Mark Your Calendars!

- Sept. 23:** Dept. Seminar – Commercialization Opportunities in the Plant Sciences, 3:30 p.m., 150 Keim, (refreshments at 3 p.m.)
  - Sept. 24-29:** American Society for Horticultural Science (ASHS) meetings, Kona, HI.
  - Sept. 26:** Agronomy & Horticulture Graduate Student Association (AHGSA) meeting, 5 p.m., first floor Plant Sciences by the vending machines.
  - Sept. 30:** Dept. Seminar – Bioenergy Systems in Brazil, 3:30 p.m., 150 Keim, (refreshments, 3 p.m.)
  - Oct. 2:** EDEP 5k Event, 9 a.m., East Campus.
  - Oct. 3-7:** Agronomy & Horticulture Dept. Comprehensive Review. Open session with review team on Oct. 5, Keim 150 at 9:15 a.m.
  - Oct. 6:** Diabetes Prevention Nutrition Series, 12:30 p.m.
  - Oct. 7:** Dept. Seminar *in Goodding Lab*: Look what is Blowing into Nebraska – Pesticide Application Technology Research at the West Central Research & Extension Center (WCREC), 3:30 p.m. (refreshments, 3)
  - Oct. 11:** Tasty Tuesday Nutr. Series, 5:15 p.m.
  - Oct. 14:** Dept. Seminar – Environmental Variability and Nutrient Cycling in Agroecosystems, 3:30 p.m., 150 Keim, (refreshments, 3.)
- Continued on page 2

## Greetings from your Wellness Ambassadors!

There are a lot of wellness events coming up this fall and winter here at UNL! Highlights include the East Campus Wellness Fair, Oct. 18, from 7:30 a.m. to noon. Here employees and students will be able to get a chair massage, flu shots, blood profile, assessments for the eyes, skin, heart, and ears, and much more!

On Friday, Oct. 21st, UNL is having the "Walk at Work for Breast Cancer--UNL Challenge." The challenge is to each walk 15 minutes sometime during the day for Breast Cancer. A donation of \$5 for every 15 minutes walked is suggested. If interested, please contact Erin at [ebauer2@unl.edu](mailto:ebauer2@unl.edu), as she will be collecting donations until Oct. 14 and will input the total for the Agronomy & Horticulture team online. As an extra bonus, anyone who signs up and donates by Monday, Oct. 10, will be entered in a drawing to win a free massager! After making your donation, simply walk at some point on Oct. 21<sup>st</sup>. Employees can walk alone or with a friend or a group, and they can walk on East Campus or at a park! The important thing is to walk for 15 minutes for a good cause! In addition, anyone who would like to participate in the city-wide "Making Strides Breast Cancer Walk," can do so on Sunday, Oct. 23 at Holmes Lake at noon.

Other upcoming wellness events include:

- Oct. 2, 9 a.m., EDEP 5K event;
- Oct. 6, 20, 27, 12:30-1:30 p.m., Diabetes Prevention Nutrition Series;
- Oct. 7, Check Up from the Neck Up;
- Live Healthy Nebraska Challenge continues through Oct. 28;
- Oct. 11 & Nov. 8, 5:15 p.m. Tasty Tuesday Nutrition Series;
- Oct. 20 & Nov. 17, 5:15 p.m. Feeding Your Family Nutrition Series;
- Nov. 17, Great American Smokeout;
- Dec. 1, 12:30-1:30, Health Holidays Nutrition Series;
- Dec. 2, World AIDS Day; and
- Dec. 13 & 14, Stress Free Zone.

– Erin Bauer & Aaron Franco, Wellness Ambassadors

## 2011 Walking Tours of the Maxwell Arboretum



The walking tours at the Maxwell Arboretum are continuing into the fall. They are held the second and fourth Tuesday of each month from 12:00-1:00 p.m. The free tours are led by Emily Levine, Special Projects Research Horticulturist with Agronomy and

Horticulture and former Grounds Supervisor for the arboretum. Please meet at the Karl Loerch Gazebo one block east of the UNL Dairy Store, near 38<sup>th</sup> and Holdrege streets. In the event of rain, that week's tour will be canceled.

– Continued from page 1

**Oct. 17-20:** ASA-CSSA-SSSA Int'l. meetings, San Antonio, Texas.

**Oct. 16-20:** Fifth Int'l. Symp. on Acclimatization and Establishment of Micro-propagated Plants, Lied Conf. Center, Nebraska City.

**Oct. 17-18:** Fall Break.

**Oct. 18:** East Campus Wellness Fair, 7:30 a.m.-noon.

**Oct. 20:** Diabetes Prevention Nutrition Series, 12:30 p.m.

**Oct. 20:** Feeding Your Family Nutrition Series, 5:15 p.m.

**Oct. 21:** Walk at Work for Breast Cancer – UNL Challenge.

**Oct. 21:** Dept. Seminar: Fusarium in Wheat, 3:30 p.m., 150 Keim, (refreshments at 3 p.m.).

**Oct. 27:** Diabetes Prevention Nutrition Series, 12:30 p.m.

**Oct. 24-Nov. 8:** Student priority registration for spring 2012 semester.

**Oct. 28:** Dept. Seminar – Confronting Pediatric Obesity: Current Evidence and Future Directions, 3:30 p.m., 150 Keim, (refreshments at 3 p.m.).

**Nov. 4:** Dept. Seminar – Cost Effective Teaching in the Life Sciences, 3:30 p.m., 150 Keim, (refreshments at 3 p.m.).

**Nov. 8:** Tasty Tuesday Nutr. Series, 5:15 p.m.

**Nov. 11:** Dept. Seminar – Food Allergy Thresholds & Risk Assessment, 3:30 p.m., 150 Keim, (refreshments, 3 p.m.).

**Nov. 17:** Great American Smokeout.

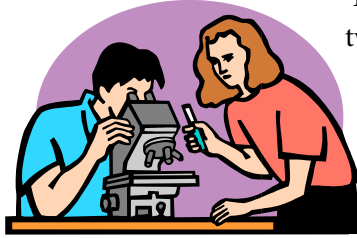
**Nov. 18:** Feeding Your Family Nutr. Series, 5:15 p.m.

–Continued on page 3

## Information For & About Graduate Students 2011 Daniel T. Walters Travel Fund Awarded

Congratulations to **Luciano Shiratsuchi** for receiving the 2011 Daniel T. Walters Graduate Student Travel Fund Award! This award was established to honor Dr. Walters and his passion for graduate students. Luciano is advised by Dr. Richard Ferguson and will be presenting his poster at the ASA/CSSA/SSSA Annual meeting in San Antonio, TX.

### Graduate Studies Sponsors Interactive Lab Sessions



The Office of Graduate Studies is sponsoring two interactive sessions focused on research integrity Sept. 28 and Oct. 5 over the noon hour at the East Campus Union.

Participants will assume one of two playable roles: a graduate student and a postdoctoral student. In each segment, the character has to make decisions about how to handle possible research misconduct. The story spins off in different directions, depending up on the choices participants make as the character. The decisions that each character makes have consequences that not only affect the character's future, but also the future of others in the lab. Graduate students, faculty mentors, postdocs, PIs, and interested staff are invited to attend. For free pizza and sodas, please pre-register at <http://go.unl.edu/TheLab>.

### Hail and Farewell! Welcome to Frank Phillips

Please welcome Frank Phillips who has joined the department as an IPM Extension Assistant. He will be working with Lowell Sandell on Crop Production Clinics and other Extension projects. Originally from Challis, ID., Phillips earned his bachelor of science in biology from the University of Idaho.

He recently became engaged to Whitney Kinservik and he enjoys hunting, fishing, backpacking, and skiing. Phillips is located in 362 PLSH and can be reached by phone at 2-5141 or by e-mail at [fphillips3@unl.edu](mailto:fphillips3@unl.edu).

### Farewell to Nic Fargo

Thanks and best wishes to Nic Fargo, our Technology Associate, who has accepted a new position with the UNL Police Department. His last day is Friday, Sept. 23. Until new computer support is identified, please contact the Information Services Help Desk at 472-3970.

–Continued from page 2

**Nov. 18:** Dept. Seminar – Em-pathy Priming & Emotional Feedback in Environmental Choice: Are They Effective?, 3:30 p.m., 150 Keim, (refreshments at 3 p.m.).

**Nov. 24-27:** Thanksgiving Break.

**Dec. 2:** Dept. Seminar – Effects of Biofuel Crop and N Management on Soil Greenhouse Gas Fluxes From a Marginal Site (Mead, NE), 3:30 p.m., 150 Keim, (refreshments, 3 p.m.)

**Dec. 2:** World AIDS Day.

**Dec. 9:** Dept. Seminar – Arbuscular corrhizal Fungi in Maize Cropping Systems: Beneficial or Not?, 3:30 p.m., 150 Keim, (refreshments, 3).

**Dec. 13-14:** Stress Free Zone.

**Dec. 16-17:** UNL Graduation.

**Dec. 19:** Agronomy & Horticulture Holiday Luncheon, EC Union.

**Dec. 26-Jan. 2, 2012:** Holiday Closedown.

**Jan. 4:** Crop Production Clinics in Beatrice.

**Jan. 5:** Crop Production Clinics in York.

**Jan. 6:** Crop Production Clinics in Kearney.

**Jan. 9:** Spring semester starts.

**Jan. 10:** Crop Production Clinics in Hastings.

**Jan. 11:** Crop Production Clinics in North Platte.

**Jan. 12:** Crop Production Clinics in Gering.

**Jan. 16, 2012:** MLK Day.

**Jan. 17:** Crop Production Clinics in Ainsworth.

**Jan. 18:** Crop Production Clinics in Norfolk.

**Jan. 19:** Crop Production Clinics in Fremont.

**Jan. 23-25, 2012:** Nebraska Green Expo, Mid-America Center, Council Bluffs, IA.

## Information From the HAPPI Business Center

### *Travel Arrangements Prior to Taking a Trip*

Any employee or student who travels out of the state of Nebraska on university business needs a pre-trip Travel Authorization (T.A.) prior to the trip. This form helps the department know where employees are and also shows that the employee was on university business for any insurance purposes. This pre-trip form provides an estimate of the trip expenses to the department and the person in charge of the cost object. The pre-trip Travel Authorization form should be signed by both the person who is traveling and the owner of the cost object. After the trip, the person traveling should complete an expense voucher promptly so all bills can be paid and the employee may be reimbursed. Contact Karen Kreider ([kkreider2@unl.edu](mailto:kkreider2@unl.edu)), Carola Strauss ([cstrauss1@unl.edu](mailto:cstrauss1@unl.edu)), or Cheryl Bogenrief ([cbogenrief2@unl.edu](mailto:cbogenrief2@unl.edu)) for assistance with your T.A. or expense voucher.

### *Professional Development Funds are Available*

Each professor receives \$300 a year in professional development funds through the Institute of Agriculture & Natural Resources (IANR). These funds can be used for travel to conferences, workshops, and continuing education events. The department is completing a 3-year cycle and these funds will expire on June 30, 2012. Faculty members are encouraged to use these funds prior to that date. There is a short IANR application that needs to be completed in order to use these funds. Contact Cheryl at 2-1522, [cbogenrief2@unl.edu](mailto:cbogenrief2@unl.edu), to find out individual fund balances and to obtain the application form.

### *Purchasing Card Audit goes well*

The department Purchasing Card program at UNL was audited last summer and the department did well, according to Cheryl Bogenrief, in the HAPPI Business Center. There were three key suggestions that resulted from the audit:

1. Turn in paperwork in a timely fashion;
2. Don't use the purchasing card for food (even for lab use); and
3. Don't share your purchasing card with anyone else.

For more information about the Purchasing Card program, contact Cheryl at 2-1522.

## A Word from Your Office Professionals

### *Preparing for the New Email System*

The university is offering several one-hour workshops for UNL's new cloud-based email system: Microsoft Office 365. "Email Best Practices – Preparing for Migration" is a one-hour workshop for faculty and staff to learn how to streamline their email accounts in preparation for UNL's new email system.

Sessions in the East Campus Union are:

- Friday, Sept. 23 at 2:30 p.m., and
- Thursday, Sept. 29 at Noon.

Sessions in the City Campus Union are:

- Tuesday, Sept. 27 at 2:30 p.m., and
- Wednesday, Sept. 28 at Noon.

For more information about the new email system, see the website at: <http://newsroom.unl.edu/announce/todayatunl/381/2647>.



### *New Copiers are Arriving*

The university has signed a new copier contract with Océ Canon and is installing new Canon copiers to replace the Konica-Minolta copiers this fall. There will be training sessions offered, so please watch for announcements about training on the new copiers. The new copiers will all be Energy Star efficient. For more information about the new copiers, see the Print, Copy, Mail & Distribution website at <http://printing.unl.edu/copy/costpercopy.shtml>.

– Brenda, Carola, Karen, Kat, Kathy, Marlene & Tiffany



### Funding Announcements

**FYI:** Visit UNL's Office of Sponsored Programs web site for funding announcements in PDF format at <http://www.unl.edu/research/sp1/index.shtml> under "Funding Opportunities." These announcements are compiled from the funding opportunities offered by federal funding agencies, private foundations, and a variety of additional entities. If you want to subscribe to Funding Announcements, contact Nathan Meier (472-1808 or [nmeier2@unl.edu](mailto:nmeier2@unl.edu)). Additional funding opportunities may be found at <http://www.grants.gov>. Grants.gov is the single access point for individuals to search competitive funding opportunities from more than 900 grant programs offered by the 26 federal grant-making agencies.