

University of Nebraska - Lincoln

DigitalCommons@University of Nebraska - Lincoln

Block & Bridle Student Organization

Animal Science Department

2003

Block and Bridle Annual, 2003

Follow this and additional works at: <https://digitalcommons.unl.edu/animalsciblock>



Part of the [Animal Sciences Commons](#)

"Block and Bridle Annual, 2003" (2003). *Block & Bridle Student Organization*. 38.

<https://digitalcommons.unl.edu/animalsciblock/38>

This Article is brought to you for free and open access by the Animal Science Department at DigitalCommons@University of Nebraska - Lincoln. It has been accepted for inclusion in Block & Bridle Student Organization by an authorized administrator of DigitalCommons@University of Nebraska - Lincoln.

Block and Bridle

2002 -2003 Club Annual

*University of Nebraska-Lincoln • College of Agriculture and Natural Resources
Department of Animal Science • Block and Bridle • Annual 2002-2003*

Historians Welcome

April 15, 2003

Dear Members, Supporters, and Friends:

Welcome to the University of Nebraska - Lincoln 2002-2003 Block and Bridle Annual. Throughout these pages you will be able to follow along on the enjoyable and successful year with our club.

As you read through our "Year in Review", we hope that you will be able to experience the exciting and meaningful year that the Nebraska chapter of Block and Bridle encountered. This annual is a reflection of our growth, development, and energy for leadership, integrity, scholarship, fellowship, cooperation, and participation in and out of the classroom and in the animal science industry. We hope to better serve the animal science industry by presenting the future with a fresh and new look at the wonderful world of animal husbandry and agriculture through the sharing of our annual.

We would like to thank the Animal Science faculty and our many generous sponsors that have supported us in all of our endeavors. With your help, we are able to continue our work to better our members and the world around us. We hope that you enjoy the annual.

Sincerely,

Kimberly M. Becker
2002-2003 Historian

Nathan Heidbrink
2002-2003 Assistant Historian

Table of Contents

Historians Welcome	3
Mission & Emblem	5
Calendar of Events	6
Treasurer's Report	6
List of Members	7
Department Head Address	8
Members	9
Officers	9
Initiates	10
Advisors	10
Steak Fry	11
State Fair Herdsmanship	12
Beef Pit	12
Little Ak-Sar-Ben	13
PASE	14
Holiday Gathering	14
Kid's Day	15
Little MAEC	16
Big Red Beef Show	17
National Convention	18
State Agricultural Education Contests	19
Honors Banquet	20
2002 Honoree	21
2003 Honoree	22
Animal Science Department Awards	23
Senior Judging Teams	24
Junior Judging Teams	25
Animal Science Faculty	26
Faces of Block & Bridle	27
Advertisements	28-32
Advertiser's Index	32

The Club

Our Mission

On December 2, 1919, representatives from four animal husbandry clubs met in Chicago, Illinois and formed the National Block and Bridle Club. The local clubs became chapters in the new organization. Nebraska was a charter chapter along with Iowa, Kansas, and Missouri. During this meeting the chapters formed a constitution which included a statement of the club's objectives.

They are:

- To promote a higher scholastic standard among students of Animal Husbandry
 - To promote animal husbandry, especially all phases of student animal husbandry work in colleges and universities
- To bring about a closer relationship among the men and women pursuing some phase of animal husbandry as a profession

The Emblem

The Block and Bridle emblem is significant to club members of every age. It represents the principles on which the club is built. Character, sincerity, and moral life are depicted in the straight perpendicular of the "B" and are asked of members when they join. The distinct curves of the "B" are symbolic of the social pleasure, mental energy, and determination of the members.

The meat block represents the material aspects of our life. The bridle stands for the behavior of Block and Bridle members, the control over ourselves that we try to maintain, the mannerisms and respect we show towards others and the way in which we treat our animals.



Calendar of Events

Premier Animal Science Events (PASE)
 State Fair Beef Pit
 Big Red Welcome
 State Fair Herdsmanship
 Steak Fry
 Little Aksarben
 Fall Kids Day
 Little MAEC
 Holiday Gathering
 Big Red Beef Show
 Agricultural Education (CDE) Contests
 Honors Banquet

June 24
 August 31
 August 25
 September 2
 September 6
 October 23
 November 6
 December 6
 December 13
 March 22
 April 3-4
 April 25

Treasurer's Report

By: Aaron Fehringer

<u>Activity</u>	<u>Expenses</u>	<u>Income</u>
Pase	\$100.00	\$100.00
Beef Pit	\$0.00	\$0.00
State Fair Herdsmanship	\$0.00	\$0.00
Steak Fry	\$19.35	\$2,983.81
Little Ak-sar-ben	\$370.60	\$150.00
Kids Day	\$199.76	\$0.00
Little Maec	\$0.00	\$0.00
Holiday Gathering	\$162.44	\$0.00
Big Red Beef Show	\$3,271.41	\$4,080.00
State Ag Ed Contests	\$251.48	\$1,500.00
Banquet	*	*
Annual	*	*
Membership Dues	\$500.00	\$1,346.00
T-Shirts	\$1,186.50	\$590.96
Big Red Welcome	\$22.80	\$0.00
Nationals	\$600.00	\$0.00
Sponsorship	\$350.00	\$0.00
Miscellaneous	\$491.54	\$0.00
Total	\$7,525.88	\$10,750.77

Estimated End of Year Balance \$3,224.89

* These figures are without complete expenses/income.

List of Members

Seniors:

Emily Buescher
Josh Chrisman
Paul Guenther
Kristen Hesman
Kerry John

John Magnuson
Don Moss
Benny Mote
Melody Nelms
Megan Voss

Joe Wendell
Travis Wolf
Justan Wynegar

Juniors:

Ben Andrews
Kimberly Becker
Aaron Fehringer
Genna Frenzen
Adam Hamling
Sarah Heidzig
Kristina Holt

Lynn Jirovsky
Bruce Kraeger
Kami Marsh
Matt McGraw
Aaron Naber
Lisa Nelson
Candice Olson

Tyréll Rousey
Jeff Schlechte
Mikaleh Shultz
Rob Smith
Aaron Ulland
Nick Weinrich

Sophomores:

Ashley Batie
Leslie Boeckenhauer
Nicole Erickson
Nate Heidbrink
Cathy Hervert

Sabrina Jansma
Lindsay Kampbell
Lisa Kotas
Ashley Lewis
Renee Minary

Corrina Oltmans
Lindsey Volkmer
Jennifer Witte
Vicki Wray

Freshman:

Justin Bolte
Brian Bomberger
Leshia Eggers
Tessa Frenzen
Mollie Grim
Jaclyn Grundman
Tracy Hadenfeldt
Aneta Klekotko

Beau Klug
Lisa Kot
Rodney Lamb
Beth Maricle
Brent Nelms
Jon Niebuhr
Shane Potter
Debi Schulz

Alison Stephens
Bob Strudl
Jessika Uden
Amanda Van Hecke
Ryan Walrath
Jessica Warner

From the Desk of Dr. Beermann

Dear Block & Bridle Club Members:

I congratulate you on your many accomplishments this past year. The Animal Science faculty are proud of the role you play in providing students an opportunity to enrich and broaden their educational experience here at UNL. We are particularly pleased with the contributions you make to the Department and the College of Agricultural Sciences and Natural Resources.

The B&B Club Officers and Committee Chairs are commended for their leadership and dedication in managing a very busy activities schedule and for bringing about some timely improvements to enhance the impact of some of those activities. When this academic year comes to a close, you will take with you many valuable learning experiences and positive memories developed during your membership in Block & Bridle.

I also extend a hearty "congratulations" to the rest of the members for your contributions and participation. I heard many praiseworthy comments about members from the three faculty advisors to the Club, Rodger Johnson, Rosie Nold, and Rick Rasby. They made valuable contributions too, as you know, and I thank them for their dedication and involvement.

The Block & Bridle Club maintains an excellent reputation for fostering friendship, collegial competition, and personal growth among its members. The activities you conduct build knowledge, technical and leadership skills, and confidence; all of which are key ingredients to success. Your selection of Max Kimmerling as this year's Honoree is a special event because members will long remember the many "lessons on life" that Max shared with club members who visited him.

Lastly, I wish you continued success in school or beyond as you define your goals and pursue those aspirations in work and life. I hope those plans include animal agriculture.

Sincerely,

Donald H. Beermann
Department Head

Members

This years members were quite active and did a great job of continuing to build the club on the values and ideals that Block and Bridle was established on. A complete list of the members can be found on page 7.



Officers

The officers consisted of :
Back- Aaron Fehringer -
Treasure, Aaron Naber -
Social Chair, Nick Wien-
rick - Ambassador, Adam
Hamling - Marshall, Nate
Heidbrink - Asst. Historian,
Don Moss - Vice Pres.
Candice Olson - Program
Chair, Kerry John - Secre-
tary, Kami Marsh - News
Reporter, Jen Witte - Asst.
Marshall, Megan Voss -
President, Genna Frenzen -
Ambassador, Kim Becker -
Historian.



Initiates



Some of this years initiates are:
Rodney Lamb, Brent Nelms, Ryan Walrath, Amanda Van-Hecke, Mollie Grim, Tessa Frenzen, Elizabeth Maricle, and Jaclyn Grundman. The other initiate names can be found on the member list on page 7.

Advisors



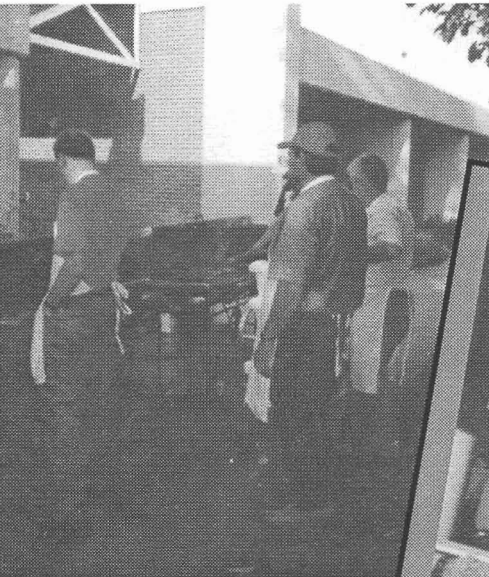
This years advisors are:

Senior Advisor:
Rodger Johnson

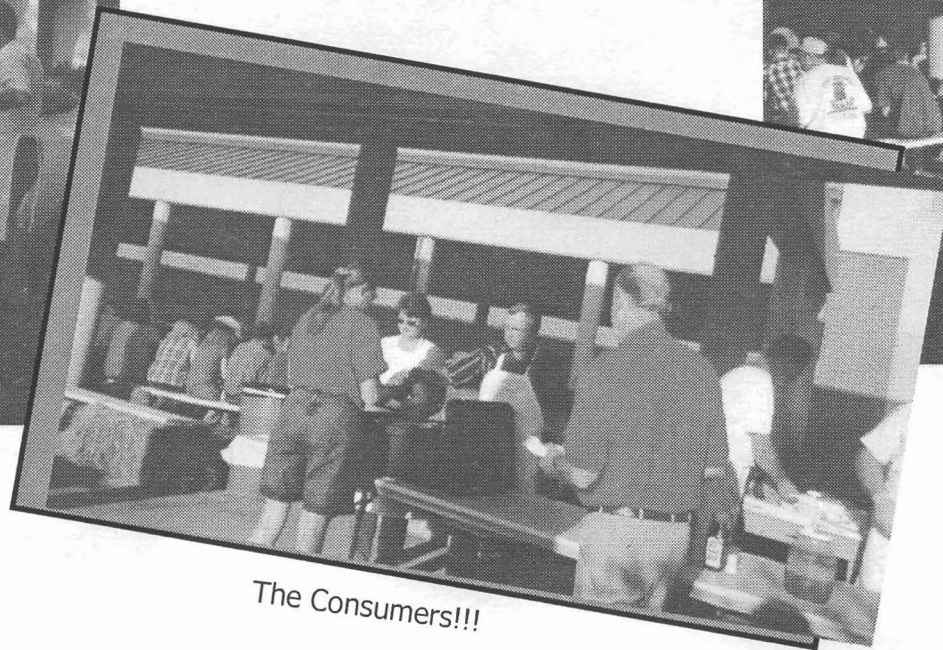
Junior Advisor:
Rosie Nold

Freshman Advisor:
Rick Rasby

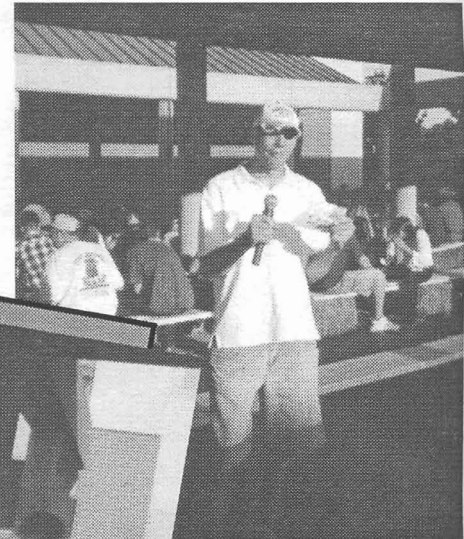
Steak Fry



The Chefs!!!



The Consumers!!!



The Announcer!!!

Each year UNL Block and Bridle helps kick off the new school year with the annual Steak Fry. On September 5, over one hundred and fifty students and faculty from east campus joined the Block and Bridle members in eating a steak dinner prepared by the animal science faculty. The courtyard in front of the animal science building made for a perfect setting.

The steak fry not only serves as a great recruitment event for the club, but also lets students and faculty get to know each other outside of the classroom setting. The steak fry was only one of the nights' events, with the "Prairie Stomp" dance sponsored by the CASNR Advisory Board following.

Sponsors for this event included the University Programs Council, Cattleman's Consulting, Excel Meats, and Nebraska Beef Council. Dr. Beermann, the Animal Science Department Head, welcomed everyone and expressed his excitement for the coming year.

This event was chaired by Aaron Fehringer, Don Moss, Megan Voss and Kimberly Becker. They would like to thank the sponsors, members and all that attended for helping make this event a success and getting the year started off on the right foot.

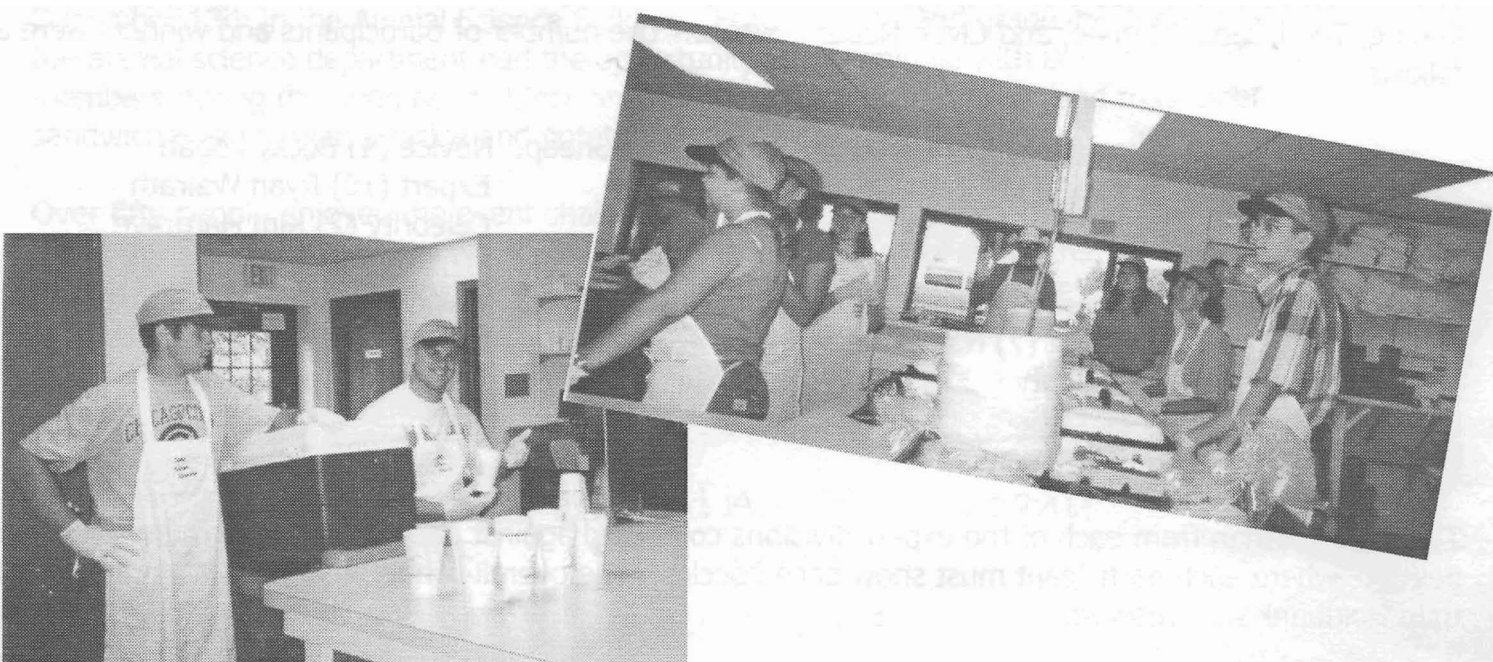
State Fair

4-H Herdsmanship

Labor Day weekend club members participated in herdsmanship judging at the Nebraska State Fair. During the three days, Block and Bridle members evaluated the 4-H participants and clubs on the appearance of their exhibit area and care for their animals. We were responsible for judging beef, swine, sheep, and dairy. Through our continued volunteering at the Nebraska State Fair, the club is not only able to express support for the outstanding 4-H organization, but we are also contributing to Nebraska youth.

Nebraska Cattlemen's Beef Pit

During the Nebraska State Fair, the Nebraska Cattlemen's Association has a "Beef Pit" on the midway. There they serve steaks and barbequed beef sandwiches to State Fair visitors. Annually, they request the help of the Block and Bridle Club to help man the Beef Pit. It has become a tradition to volunteer our services and both organizations look forward to working together. On August 31st several members donated their time to take orders, serve visitors, and clean tables. This is an important contribution to a valuable organization within the beef industry and a strong supporter of Block and Bridle.



Little Aksarben



This event was held October 24, 2002, at 7:00 pm in the Animal Science Arena. Participants were able to work and fit their livestock from October 22 to the 24. Four species were shown: Beef, Swine, Sheep, and Equine. In each of the species there were the usual two divisions of novice and expert, and this year a new division of celebrity was added. The celebrity consisted of faculty, staff, and graduate students. Each livestock species had a different judge, and they were Deanna Karmazin – Beef, R.B. Warren – Equine, Ted Doane – Sheep, and Clyde Naber – Swine. The number of participants and winners were as follows:

Beef: Novice (6) Lynn Jirovsky
Expert (11) Cathy Hervert
Celebrity (4) Kim Hargrave

Sheep: Novice (4) Becky Logan
Expert (10) Ryan Walrath
Celebrity (2) Kim Hargrave

Horse: Novice (12) Kami Marsh
Expert (7) Nathan Heidbrink
Celebrity (1) Dr. Keith Gilster

Swine: Novice (5) Jaclyn Grundman
Expert (9) Ross Nantkes
Celebrity (4) Ginger Mills

Overall, there were 75 participants.

The top showman from each of the expert divisions competed against each other in the round robin competition, where each participant must show each species. The overall winner was Ryan Walrath and Nathan Heidbrink won reserve.

The chairpersons, Aaron Naber and Kami Marsh say thank you to all participants, judges, club members and anyone else involved, it was a fun and successful experience for all.

PASE

PASE: Premier Animal Science Events is the youth 4-H activities of the Livestock Judging Events that had previously been held during the Nebraska State Fair. This two day event was the sight of a lot of activity from the almost 400 youth participants.

The first night of the contest allowed students to be introduced to Block and Bridle. We rented out the bowling alley of the East Campus Union for the night, where youth could bowl, play pool, and also foosball. This was a great way for student to student interaction between the members and participants.

The chair Megan Voss would like to thank Kim Becker, Don Moss and Kristina Holt for helping at this event.

Holiday Gathering

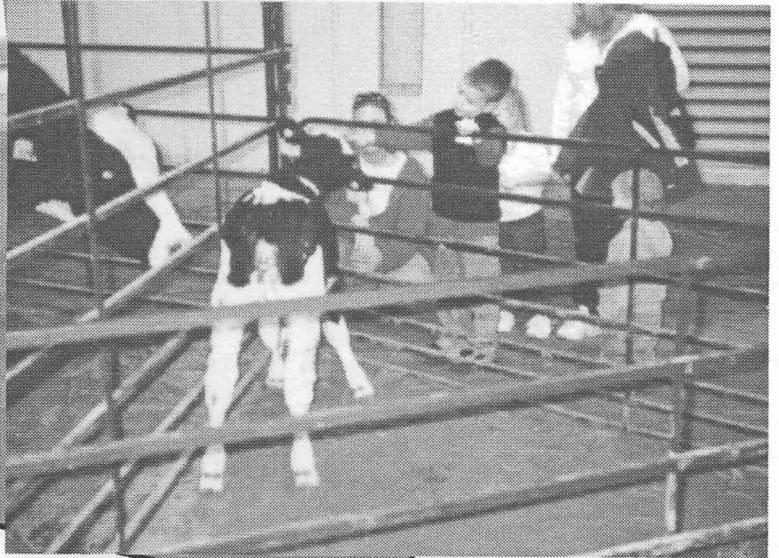
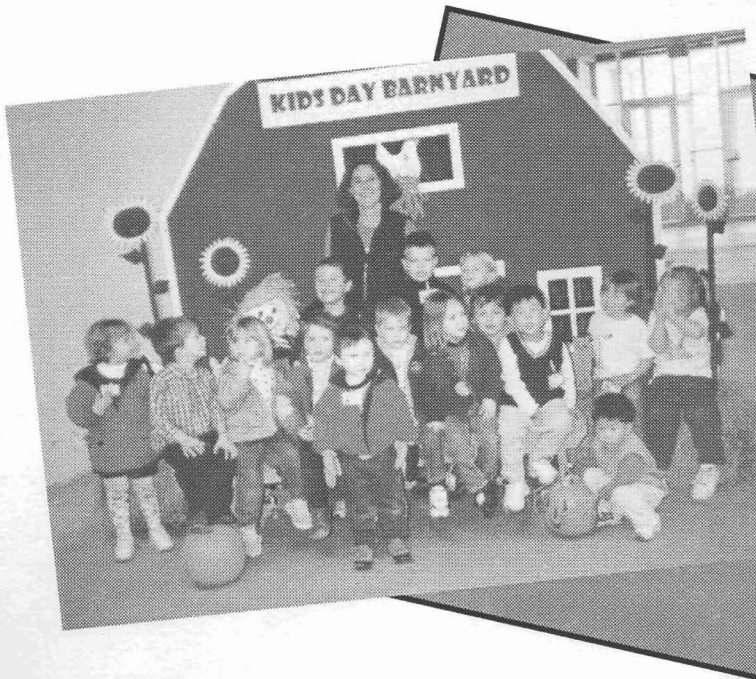
In honor of the holiday season, Block and Bridle held the annual Holiday Gathering Friday, December 13th in the Animal Science Building. Faculty, staff, and graduate students of the animal science department had the opportunity to intermingle with Block and Bridle members during the noon hour. Block and Bridle members served ham and roast beef sandwiches along with a pickle and potato salad.

Over fifty people enjoyed the event chaired by Kimberly Becker, Megan Voss and Aaron Fehringer. The chairpersons would like to say thank you to all of those that attended and helped with this event. A special thanks goes to B & B Bakery for the use of their serving trays and utensils.

This page is
Sponsored By:

Harl Auction Company
Tracy Harl
242 N 2nd Ave.
Hastings, NE 68901

Kids Day



This event was held on November 6, 2002, in the Animal Science Arena. Area youth were taken on a tour by a Block & Bridle member, but first a group picture was taken and then the fun in the arena began. There were many different stations positioned around the arena, and each one had their own poster with interesting facts for the children and teachers to read. The different stations included: market cattle, market hogs, market lambs, ponies, horse, dairy cow and calf, piglets, mice, chickens, quail, horse skeleton, wool, and 2 plastic horses for the kids to ride. There were a total of 15 groups, which totaled almost 200 children.

The chairpersons for this event were Kami Marsh and Aaron Naber. The committee would like to thank everyone who helped set-up, lead groups, takedown, and to the provider of the animals.



Little MAEC

On December 6, 2002, numerous University of Nebraska students participated in the Block and Bridle Little MAEC Market and Breeding Division Judging Contest. The event took place in the Animal Science Building Arena. Block and Bridle members were group leaders, helped with registration and scoring, stirred livestock and some also participated at the same time.

Students were entered into three divisions, Senior, Junior, and Novice, and had to judge seven classes of livestock. They were also asked questions and evaluate three classes for carcass characteristics.

After the scores were tabulated, the results were:

Senior Division

Overall	Beef	Swine	Sheep
1. Jill Kruger	1. Joe Wendell	1. Joe Wendell	1. Aaron Naber
2. Joe Wendell	2. Jill Kruger	2. Jill Kruger	2. Dave Uhrig
3. Dave Uhrig	3. Dave Uhrig	3. Ben Andrews	3. Tyrell Rousey

Junior Division

Overall	Beef	Swine	Sheep
1. Aaron Sindelar	1. Chris Hanson	1. Aaron Sindelar	1. Aaron Sindelar
2. Rodney Lamb	2. Rodney Lamb	2. Adam Hamling	2. Adam Hamling
3. Adam Hamling	3. Aaron Sindelar	3. Rodney Lamb	3. Adina Choat

Novice Division

Overall	Beef	Swine	Sheep
1. Sarah Daly	1. Melissa Thompson	1. Clint Burney	1. Sarah Daly
2. Melissa Thompson	2. Brian Meyer	2. Sarah Daly	2. Tyler Daly
3. Clint Burney	3. Brent Johnson	3. Tyler Daly	3. Brian Meyer

Top Senior Team

Aaron Naber
Adam Hamling
Aaron Fehringer
Don Moss

Top Junior Team

Marty Moravec
Luke Schmid
Curt Rickertson
Caleb Harms

Top Novice Team

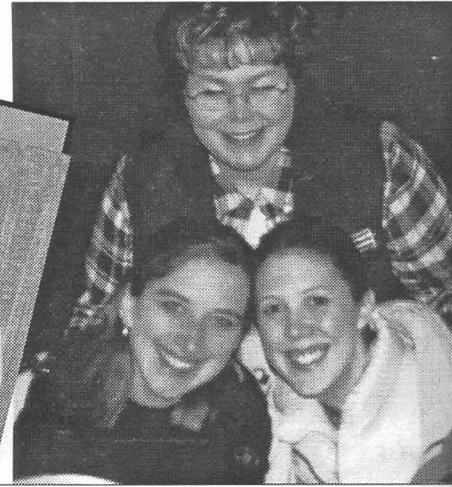
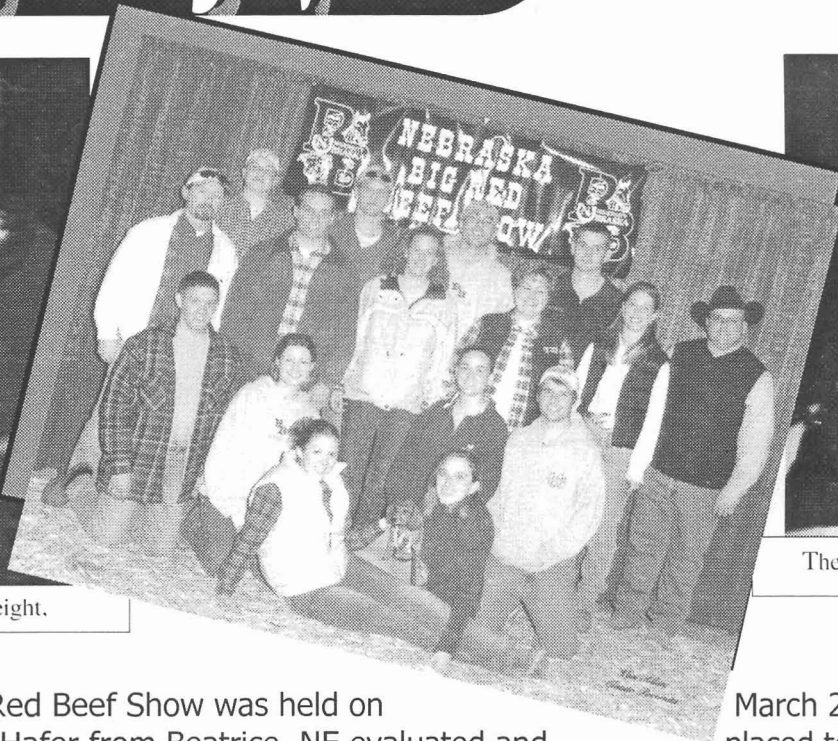
Sarah Daly
Tyler Daly
Clint Burney

Jeremy Martin, Dr. Bryan Reiling, and current and past judging team members served as the official judges for the event and Candice Olson and Genna Frenzen were the chairpersons. A big thank you goes out to all of the participants and members who helped make this event successful for another year.

Big Red Beef Show



Are you sure that was the hip height.



The Registration table was all smiles !!!

The 30th annual Big Red Beef Show was held on Columbus, NE. Larry Hafer from Beatrice, NE evaluated and of breeding heifers, market heifers, market steers, and showmanship at the Nebraska Junior Cattleman sanctioned show. There were 129 head of cattle exhibited by 89 4-H and FFA exhibitors from Nebraska and Iowa.

March 22, at the Ag Park in

placed ten different breeds

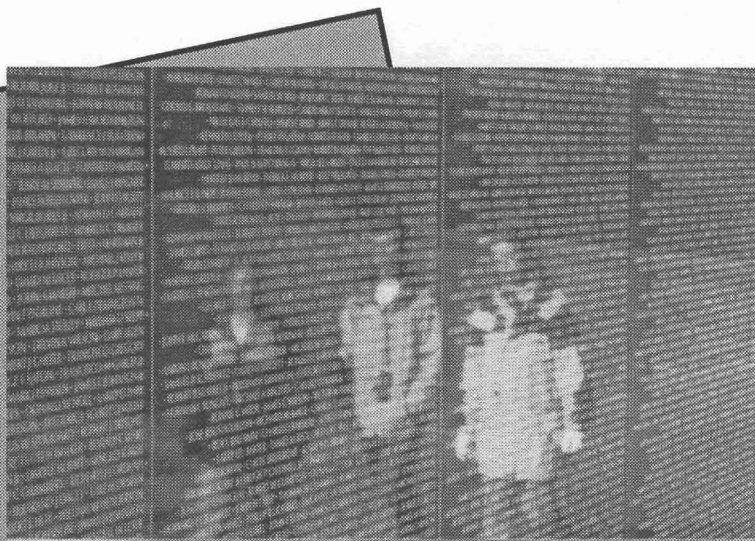
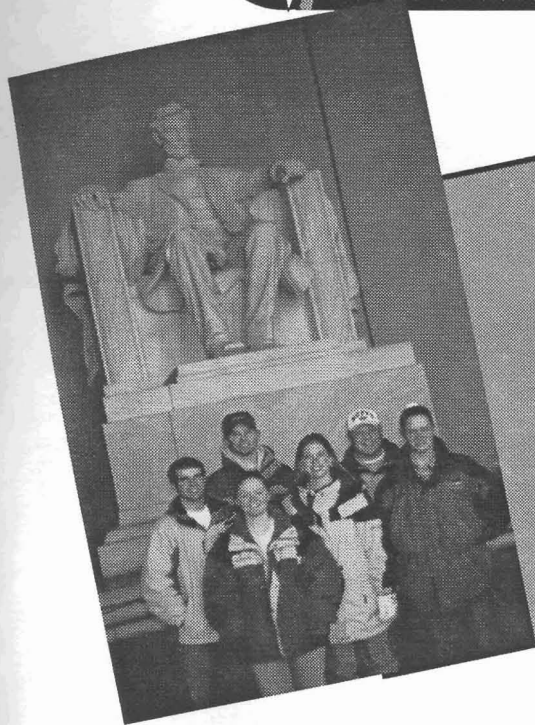
The supreme breeding heifer was shown by Sara Wert, Cody Schulz showed the reserve. Supreme market animal was exhibited by Chelsea Palmer, reserve by Lindsey Sievers. Champion market steer was shown by Chelsea Palmer, reserve by Julia French. The Champion market heifer was exhibited by Lindsey Sievers, reserve by Jacob Bakenhus.

For the second year, a \$500 scholarship to the College of Agricultural Sciences and Natural Resources at the University of Nebraska-Lincoln was give to the top senior and intermediate showmen. The champion senior showman was Emily Pohlman with Kenny Palmer as reserve. The champion intermediate showman was Jacob Bakenhus and Jara Settles as reserve. The champion junior showman was Nathan Fillip with Cody Scholz as reserve.

This event would not be possible without sponsorship. This years sponsors include: Galen Frenzen, Julian and Kathleen Canaday, Bull Barn Genetics/Cedar Top Ranch, Wagonhammer Cattle Co., Darr Feedlot, Inc., TWJ Farms, QuirkLand & Cattle Co., Upstream Ranch, A & B Cattle, Huss Platte Valley Auction, Inc., Triple J Club Calves, Monahan Cattle Company, Nebraska Polled Hereford Association, George & Barb Cooksley, Rishel Angus, Nebraska Cattlemen, Loup City Commission Company, Winz Wagonwheel Ranch, Inc., Feller and Company, Blueberry Hill Farms.

The chair, Genna Frenzen would like to thank you to all who helped, attended, participated and helped to make this event possible.

National Convention



On January 23-26 Nick Weinrich, Matt McGraw, Adam Hamling, Genna Frenzen, Cathy Hervert, and Darci McGee represented the Nebraska chapter at the National Block and Bridle Convention in Washington D.C. This group left Thursday January 23rd to make their presence known among the 600 other students in attendance.

On Friday morning we awoke early to attend sessions presented in the Double Tree Hotel in which we were staying. Some of the sessions were What Makes A Cow Tick, which dealt with the estrus cycle of a cow. Others were, niche marketing, a success story on the marketing of lambs, and the pros and cons of financing. These sessions were all interesting and we learned a lot about the respective topics. Friday afternoon was on our own, so we took the time to do a little sight seeing. We walked through Arlington Cemetery, walked across the Potomac River, then through the mall, where we saw the Lincoln Monument, the Vietnam Wall, Washington Monument, the White House, and then the Smithsonian Museum. There was a dance that followed later that evening.

Saturday morning we were off to see the surrounding farms and sights. Some of the tours that we attended were the Hanover Shoe Farm, which is the largest standard-bred farm in the U.S., and also the Mason Dixon Farms, which is a large dairy farm on the Mason Dixon Line. Then we were able to tread on the sacred grounds of Gettysburg. After our tours and returning back to D.C., we attended the closing banquet where many members were awarded for their strong embrace on Block and Bridle. There one of our own was recognized for her strong work ethic on both the local and national level, Megan Voss received the National Junior Scholarship Award.

Sunday morning, with our baggage packed and our heads spinning from the knowledge gained from the places we attended and the people we met, we departed to head back to Nebraska.

We would like to thank our sponsors that so generously donated to help with the costs: Animal Science Department (traveling expenses), and the Block and Bridle Club. It was greatly appreciated. THANK YOU!

We would like to thank our sponsors that so generously donated to help with the costs: Animal Science Department (traveling expenses), and the Block and Bridle Club. It was greatly appreciated. THANK YOU!

State FFA

The State Agricultural Education Contests were held April 3 and 4 in the animal science building. As the campus became engulfed with the traditional blue and gold FFA jackets, we could feel the anxiety of the participants and advisors growing. The livestock selection portion took place on the third and was headed up by Kami Marsh and Kerry John. The livestock management portion took place on the fourth and was chaired by Aaron Naber and Kami Marsh.

The participants in the selection contest judged eight different classes including the market swine, beef, and lambs, two breeding classes, a cull/keep class, frame and muscle feeder calf class and questions. The senior division also gave sets of reasons. This year the contest included the use of computerized scorecards, which were a big help when it came to calculating. Hopefully next year all of the little problems will be eliminated. Members were responsible for registration, leading groups, stirring animals, and helping to complete score tabulations.

The participants in the management contest were tested their knowledge of one of six species: beef, dairy, swine, sheep, horse, and poultry. Members of B & B were responsible for registration, leading groups, helping with the different species, and helping administer the tests.

Thank you to all of the club members and faculty who worked together to make this a challenging and successful contest for Nebraska FFA members.



Honors Banquet

The 2002-2003 Block and Bridle Honors Banquet was held on April 25, 2003. The banquet is a club tradition to mark the end of another successful academic year. Club members, animal science students, and various judging teams are recognized for their outstanding achievements both in the classroom and in extracurricular activities.

The banquet also holds another special tradition of naming the Block and Bridle Honoree. The honoree is an individual who has made a significant contribution to animal agriculture. The banquet is held in their honor and a portrait is presented to be hung in the animal science hall of fame. The Honoree recognized at the 2002-2003 banquet was Mr. Max Kimmerling from Beatrice, NE.

The Block and Bridle Awards given were:

Don Geweke Awards (Little MAEC)

Jill Kruger – 1st in Senior Division
Aaron Sindelar – 1st in Junior Division
Joe Wendell – 2nd in Senior Division

Mike Cull Award

Kristina Holt

National Outstanding Senior Award

Megan Voss

Outstanding Junior Activities

Kami Marsh

Outstanding Initiate

Ryan Walrath

Outstanding Junior Scholarship

Aaron Naber

Outstanding Senior Scholarship

Megan Voss

National Junior Scholarship

Aaron Naber

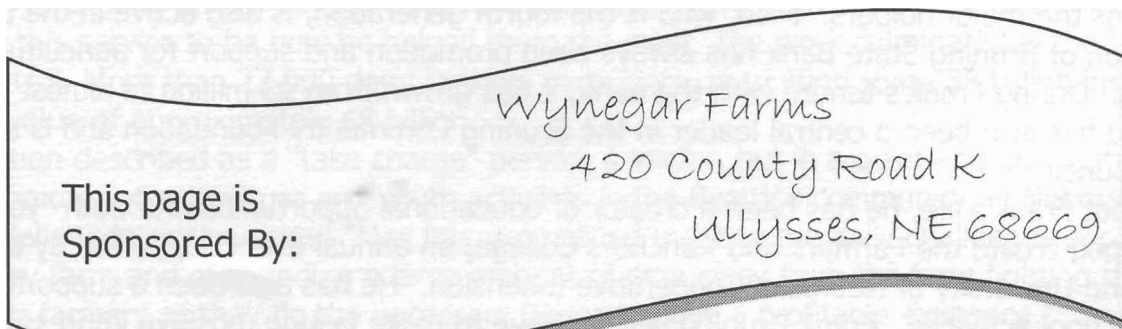
Senior Workhorse

Justan Wynegar

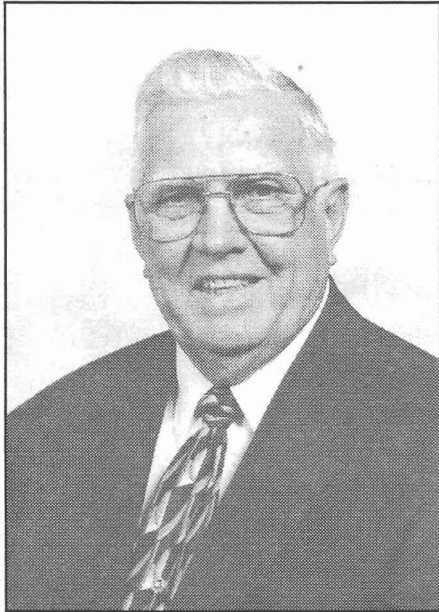
Outstanding Sophomore Activities

Nathan Heidbrink

This years banquet was chaired by Megan Voss and Don Moss.



2002 Honoree



Frank Bruning

Family:

Wife: Mary

Children: Fred and Jane

Background:

Other than years spent serving in the US Marines or on campus at the University of Nebraska, Frank Bruning has spent his entire life in Bruning, Nebraska. He was born on April 21, 1926. He attended school in Bruning, graduating from high school in 1943. Following high school, he studied at the University of Nebraska for one semester, and then in fall of 1943, he enlisted in the Marines and served in Guam for 14 months. Upon discharge, Frank returned to the University of Nebraska and majored in Animal Science. In 1949 he received a bachelor's degree in agriculture. While at the university, he was instrumental in forming the Rodeo Club, was a member of Alpha Tau Omega fraternity, and was active in numerous other activities.

Frank married Mary Reiss. They started a registered Hereford herd in 1950, and in 1975 with son Fred, they added registered Angus cattle to their operation. Recently, they have added a five-breed composite herd of cattle. In their operation, they have both spring and fall calving seasons. All cows are maintained near Bruning and Fairbury and are fed feedstuffs produced in their farming operation. Other cattle are also purchased for grazing and fed for slaughter. Innovative grazing practices have been incorporated into a total life-cycle management program.

In 1961, Frank and Mary created a unique business, Feedlot Fencing, Inc. that grew out of innovative use of oilfield pipe and rods. This successful venture provides steel rods and pipe, along with gates and panels that Feedlot Fencing manufactures, for feedlots, ranches, dairies, buffalo and horse operations across much of the Midwest. Mary and Penni (Fred's wife) handle most of the fencing business management.

In 1891, Frank's grandfather started Bruning State Bank, which was originally called the German Bank. Frank became President of the bank in 1965 and then Chair of the board in 1987. The Bruning family remains the major holders. Fred, who is the fourth generation, is also active in the bank. The central mission of Bruning State Bank has always been promotion and support for agriculture and rural communities. During Frank's tenure with the bank, it has grown from \$3 million to almost \$90 million in assets. He has also been a central leader in the Bruning Community Foundation and is active in the Grassland Council.

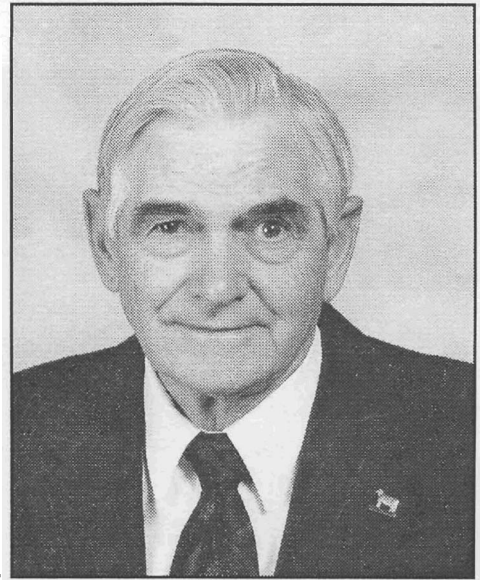
Throughout Frank's life, he has been a creator of educational opportunities for both "young and old". He helped create the Farmers and Ranchers College, an annual event supported by area agribusinesses and University of Nebraska Cooperative Extension. He has also been a supporter of area 4-H and local school activities. Frank Bruning will continue to make lasting, positive impressions on youth and our leaders for tomorrow.

Max Kimmerling

Family:

Wife: Viola

Children: Phillip (deceased), Linda Kopp,
Kent (deceased), Kathy Strouf, Paul, Kevin



Background:

A dairyman from Beatrice, NE, Max Kimmerling has given much of his time during the last 25 years to ensure Nebraska's dairy producers have a market for their milk. He was born June 5, 1927, attended school in Beatrice and graduated from Beatrice High School. He attended the University of Nebraska where he was a member of the Block and Bridle Club and served as secretary/treasurer of the Varsity Dairy Club. He also was a member of Alpha Gamma Rho and Alpha Zeta. He received a B.S. degree in Agriculture with majors in Dairy and Animal Husbandry. He and his wife Viola were married while Max was attending college.

After graduating from UNL, Max and Viola returned to the family farm in Gage County. They have been milking cows ever since. By today's standards, their herd is relatively small, 60 to 100 Holstein and Milking Shorthorn cows. But it is truly a family farm. Even today, on days when he is not involved in board meetings, Max is usually at the farm doing a significant amount of the milking and farm chores along with his son Paul and Paul's family. It is evident that Max and Viola place high value on involving the entire family in the farming activities. Their children and grandchildren have been very active in 4-H and Max and Viola readily share pictures of their family showing the prize Milking Shorthorns at county and state fairs and national shows.

Max was very involved in the activation of the Nebraska Dairy Industry Development Board. LB 275, a bill that provided an operative provision for the board, was passed into law in 1992. Through Max's leadership the board was activated in 1998 and Max served as Chairman from its inception to 2001. Max, a Corporate Board Member of Mid American Dairymen, Inc., was involved in the decision to merge Mid American with three other cooperatives to form Dairy Farmers of America in 1998. He served in the reorganization of DFA as one of its first corporate board members from 1998 until 2001. His fellow dairymen consider this service to be how he helped them the most. The work culminated in the largest cooperative in the U.S. More than 22,000 dairy farmers participate, marketing some 38 billion lbs. of milk annually with a value of approximately \$8 billion.

Max has been described as a "take charge" person, a leader, but in a quiet and unassuming way. He is a strong promoter of agriculture and youth activities in the Beatrice community, in Nebraska, and nationally. As a fellow dairyman wrote, "Max has exemplified meeting the daily challenges of operating a successful dairy farm and of spending a large amount of time away from the farm fighting the battles for his fellow dairy farmers as they do the necessary things to have a profitable existence."

Animal Science Department

Scholarship Recipients

ABS Global
Ashley Batie

Baltzell Agri-Products, Inc.
Genna Frenzen

Burnell
Melissa Senf

Maurice E. Boeckenhauer Memorial
William Pohlmeier

Robert Boeckenhauer Memorial
Lisa Kotas

Lincoln Coca-Cola Bottling Co.
Sabrina Jansma

Doane
Elizabeth Maricle

William J. & Hazel J. Loeffel
Rachel Spatz
Sarah Heidzig

Nutrition Service Associates
Libby Johnson

Parr Family Scholarship
Jill Wardell

Chris and Sarah Raun Memorial
Jordan Spatz

Walter A. & Alice V. Rockwell
Robert Smith
Adam Hamling
Megan Peterson

Max and Ora Mae Stark
Renee Minary

Dwight F. Stephens
Jodi Corbin

Arthur W. & Viola Thompson
Nathan Glaesemann
Lisa Kot

Thomas H. Wake, III
Ashley Lewis

Student Ambassadors	
2002-2003	2003-2004
Ryan Brewster	Sarah Heidzig
Sarah Heidzig	Lindsay Kampbell
Lindsay Kampbell	Renee Minary
Aaron Naber	Rachel Spatz
Jordan Spatz	Jordan Spatz
Rachel Spatz	Jessika Uden

Freshman Scholarships
Ashley Benes-Waldo Farms
Justin Bolte-Waldo Farms
Adina Choat
Michael Gordon
Jared Hartmann

Jessica Koelsch
Elizabeth Maricle
Jessika Uden
Jessica Warner

Animal Science Award
L.L. Hathaway Award to Top Senior
Dan Longfellow

Seniors

Juniors

Sophomores

American Society of Animal Science Undergraduate Academic Recognition

Dan Longfellow*
Caleb Harms
Emily Buescher
Lynn Jirovsky
Genna Frenzen

Gretja Schnell*
Jordan Spatz
Darci McGee
Renee Minary
Ashley Robison
Libby Johnson
Sabrina Jansma

Rachel Spatz*
Lisa Kot

*Indicates top student in the respective class.

Senior Meats Judging Team



Front Row- (L to R)
Jason Meents, Genna
Frenzen, Candice Olson.

Back Row - Coach Perry
Brewer, Aaron Naber,
Coach Dr. Burson , and
Dr. Beermann,
Department Head.

Senior Livestock Judging Team

Front row (L to R) - Clay
Mead, Benny Mote, Bryce
Martin, and Mark Hassebrook.

Back row - Dept. Head Dr.
Beermann, Cory Schlueter,
Coach Jeremy Martin, and
Coach Dr. Reiling



Junior Meats Judging Team



Front Row - Vicki Wray, Cathy Hervert, Ashley Batie.

Back Row - Advisor Dennis Burson, Coach Perry Brewer, Coach Ryan Baumert, and Dr. Beermann, the Department Head.

Junior Livestock Judging Team

Advisor Dr. Reiling , Tyrell Rousey, Kristina Holt, Aaron Naber, Joe Wendell, Coach Jeremy Martin, Ben Andrews



Faculty



Dr. Don Beermann
Department Head



Don C. Adams



Kathleen P.
Anderson



Mary M. Beck



Dennis R. Brink



Michael C. Brumm



Dennis E. Burson



Chris R. Calkins



Andrea S. Cupp



Earl F. Ellington



Galen E. Erickson



Keith E. Gilster



Jim. A. Gosey



Richard J. Grant



Rodger K. Johnson



Steven J. Jones



Jeffrey F. Keown



Roger J. Kittok



Terry J. Klopfenstein



Richard K. Koelsch



Larry L. Larson



Austin J. Lewis



Terry L. Mader



Roger W. Mandigo



Phillip S. Miller



Jess L. Miner



Merlyn K. Nielsen



Rosie A. Nold



Daniel Pomp



Rick J. Rasby



Duane E. Reese



Bryan A. Reiling



Ivan G. Rush



Sheila E. Scheidlerer



Richard E. Stowell



L. Dale Van Vleck



John S. Weber



Brent R. White

From the Desk of Dr. Beermann

Dear Block & Bridle Club Members:

I congratulate you on your many accomplishments this past year. The Animal Science faculty are proud of the role you play in providing students an opportunity to enrich and broaden their educational experience here at UNL. We are particularly pleased with the contributions you make to the Department and the College of Agricultural Sciences and Natural Resources.

The B&B Club Officers and Committee Chairs are commended for their leadership and dedication in managing a very busy activities schedule and for bringing about some timely improvements to enhance the impact of some of those activities. When this academic year comes to a close, you will take with you many valuable learning experiences and positive memories developed during your membership in Block & Bridle.

I also extend a hearty "congratulations" to the rest of the members for your contributions and participation. I heard many praiseworthy comments about members from the three faculty advisors to the Club, Rodger Johnson, Rosie Nold, and Rick Rasby. They made valuable contributions too, as you know, and I thank them for their dedication and involvement.

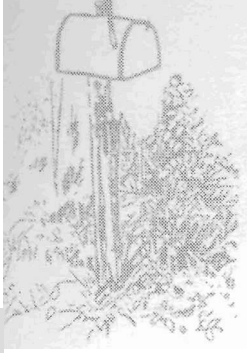
The Block & Bridle Club maintains an excellent reputation for fostering friendship, collegial competition, and personal growth among its members. The activities you conduct build knowledge, technical and leadership skills, and confidence; all of which are key ingredients to success. Your selection of Max Kimmerling as this year's Honoree is a special event because members will long remember the many "lessons on life" that Max shared with club members who visited him.

Lastly, I wish you continued success in school or beyond as you define your goals and pursue those aspirations in work and life. I hope those plans include animal agriculture.

Sincerely,

Donald H. Beermann
Department Head

Bruning State Bank



“Your Country Bank”
Since 1891

Growing Together in 2003!

Stop in or give us a call for all your financial, investment or insurance needs.

Bruning 402-353-2555
800-403-5889

Hebron Branch 402-768-7473
800-405-6167

Member FDIC

UNIVERSITY OF
Nebraska
Lincoln

College Of Agricultural Sciences
and Natural Resources~CASNR

Building Success.....

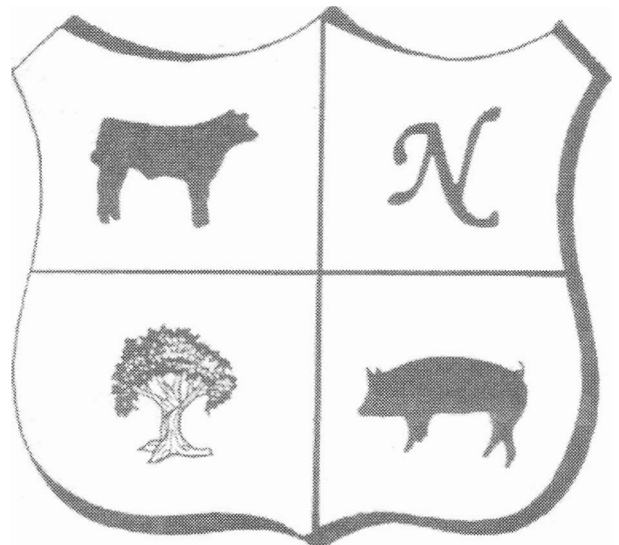
One Student at a Time

103 Agricultural Hall
Lincoln Nebraska. 68583

(402) 472-2541
1-800-742-8800 ext. 2541

Website:
[Http://casnr.unl.edu](http://casnr.unl.edu)

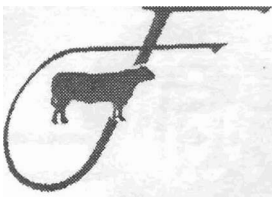
Email:
casnr@unl.edu



NABER FARMS

- CLYDE, HELEN & AARON -

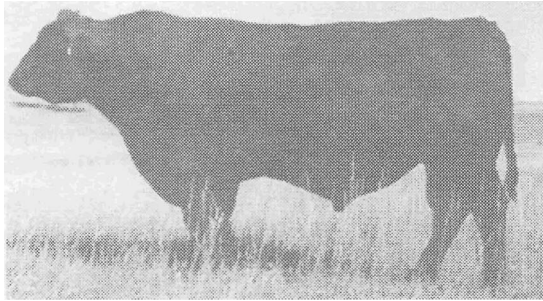
**3700 Roca Road
Roca, NE 68430
(402) 794- 5175**



FRENZEN

ANGUS AND POLLED HEREFORDS

GALEN FRENZEN
Rt. 2, Box 14
Fullerton, NE 68638
308-536-2069



**WK BANDO
6314**



EPO's	BW	WW	MILK	YW	SC	CW	Marb	RE	FAT	%RP
	+2.4	+40	23	95	+84	+4	+.06	+.07	-.002	+06

WT: Aug. 2002 — 2454#

PRODUCTION SALE—ANGUS & POLLED HEREFORDS MARCH 23, 2004

FEMALES & CLUB CALVES FOR SALE AT PRIVATE TREATY

Maricle Trailer Sales

Brian E. Maricle

Phone: (402) 678-2927
Cell: (402) 562-3501

3279 State Hwy 39
St. Edward, NE 68660
E-mail: maricletrailer@gpcom.net

**TRAILMANN
TRAILERS**

Service All Makes
Installation of Gooseneck Hitches



Craig Hundt, Sr.
First Vice President - Investments
Senior Consulting Group Associate
Financial Consultant



**CONSULTING
GROUP**

402-474-2400 • 800-323-2777

SALOMON SMITH BARNEY INC.
1248 "O" Street, Suite 1100
Lincoln, NE 68508-1499
FAX 402-474-0384

"Just Look For The Big Red Boot"

Hats • Boots • Tack • Jewelry
Clothing for the Whole Family

**DRY CREEK
Western Wear**

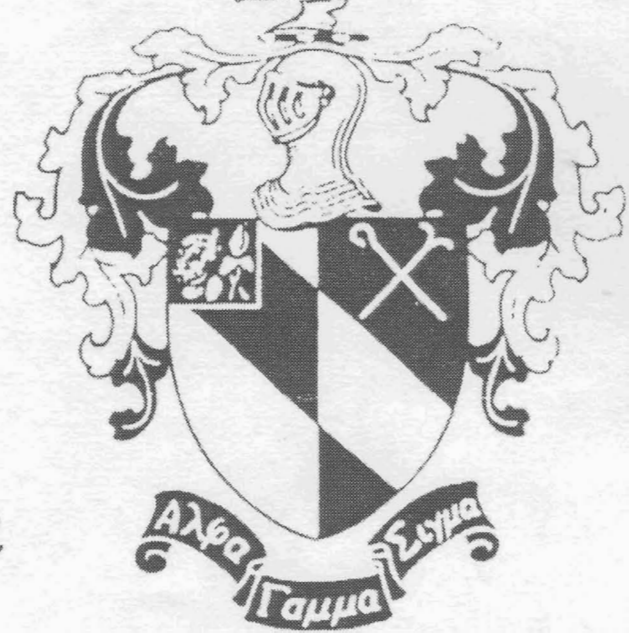
Hours:
Mon.-Sat. 9-6
827 G St.
P.O. Box 278
Burwell, NE
68823
(308)346-4810

1 FIRST DAKOTASM
LOAN PRODUCTION OFFICE

BOYD MIGNERY
LOAN PRODUCTION OFFICER

2837 WEST HIGHWAY 6 | 402 463 4637
HASTINGS, NE 68901 | FAX 402 463 8579
firstdakota.com | CELLULAR: 402.841.1897
email: bmignery@gpcom.net

Alpha
Gamma
Sigma



Where Quality Counts
Established 1953

4001 Holdrege St. Lincoln, NE 68503

Orthodontics, Implants, Cosmetics,
Periodontics, and General Denistry

Bill Peterson, D.D.S.

1626 L. St., Box 224 - Ord, NE, 68862
Telephone - Office 308-728-3756 - Home 308-728-7015



Grim Family Ranch
Bonesteel, SD

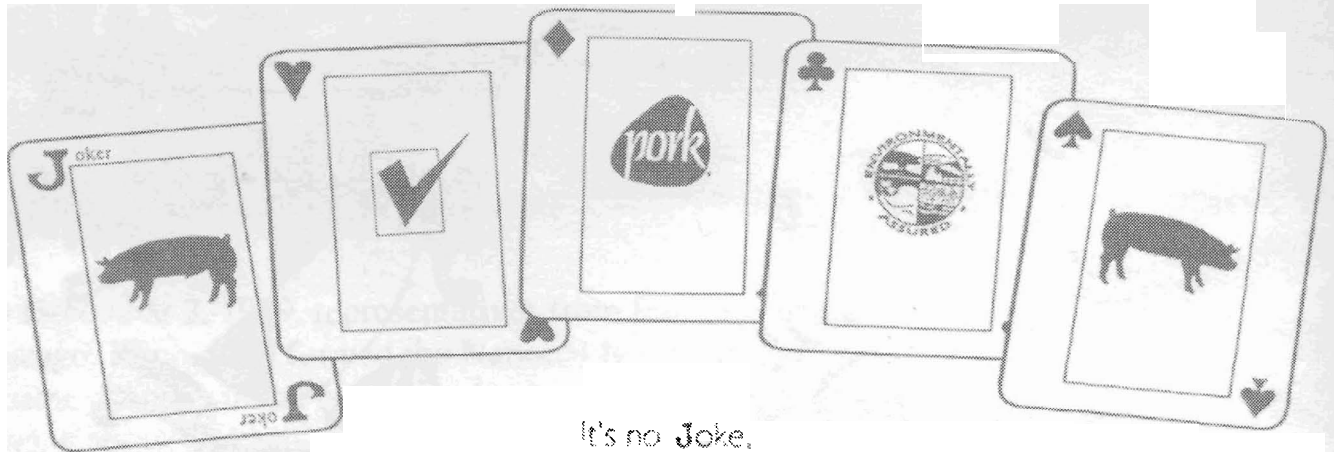


Maricle Family Farms
Albion, NE



Kristina Holt
Thedford, NE

Here's the Deal...



It's no Joke,
the Nebraska Pork Producers Association supports your ♣
because we know that your ♠ is in agriculture.
As the swine industry seeks continued leadership,
please accept the challenge to be our ♦ of the future

Nebraska Pork Producers Association

PO Box 830909 - Lincoln, NE 68589 - (402) 472-2553 - (888) 627-7675 - www.nepork.org - nppa@nepork.org



B & B Bakery, Inc. and Catering

SANDRA BLAHA

MARY BECKER

(402) 693-2803

316 Second St., Box 8

Dodge, NE 68633

Hours:

M-F 7 am - 3 pm

Sat. 7 am - noon

Closed Wednesday & Sunday

In Service For More Than 10 Years



Bill Van Hecke

DIRECTOR OF OPERATIONS

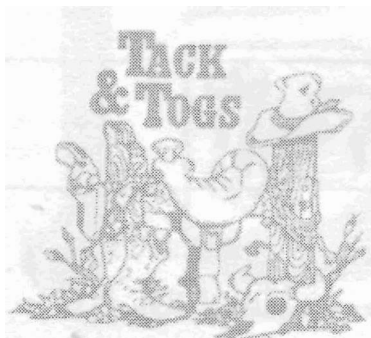
Phone (952) 808-8629

Fax (952) 808-8633

Cell (612) 812-8615

**11984 Riverwood Drive
Burnsville, MN 55337**

wvanhecke@vantechcorp.com



Used English &
Western Saddles
Western & English Clothing
New & Used Tack

Marge Davenport

3700 Adams Street
Lincoln, NE 68504
(402) 466-4114

Horse Lovers Consignment!

The Total Performance Brand



Registered Angus & Charolais Seedstock

Annual Production Sale each March– Call for a catalog

Plus Club Calves– The Winning Kind

MYRON BENES - SALES
402-395-6962
Visit us on-line at
www.wagonhammer.com

JAY WOLF & ELAINE WOLF - OWNERS
Box 548
Albion, NE 68620
402-395-2178

Advertiser's Index

Alpha Gamma Sigma	30
B & B Bakery	31
Bill Peterson, DDS	30
Bruning State Bank	28
Consulting Group	29
Dry Creek Western Wear	29
First Dakota Loan Production Office	29
Frenzen Angus & Polled Herefords	29
Grim Family Ranch	30
Harl Auction Company	14
Kristina Holt	30
Maricle Trailers	29
Maricle Family Farms	30
Naber Farms	28
Nebraska Pork Producers	31
Tack & Togs	31
University of Nebraska-Lincoln	28
Van-Tech	31
Wagonhammer Ranches	32
Wynegar Farms	20