

January 1999

Test 1894: Case IH CX 60/ C 60 Diesel

Follow this and additional works at: <http://digitalcommons.unl.edu/tractormuseumlit>



Part of the [Applied Mechanics Commons](#)

"Test 1894: Case IH CX 60/ C 60 Diesel" (1999). *Nebraska Tractor Tests*. 191.
<http://digitalcommons.unl.edu/tractormuseumlit/191>

This Article is brought to you for free and open access by the Tractor Test and Power Museum, The Lester F. Larsen at DigitalCommons@University of Nebraska - Lincoln. It has been accepted for inclusion in Nebraska Tractor Tests by an authorized administrator of DigitalCommons@University of Nebraska - Lincoln.

SUMMARY OF OECD TEST 1894—NEBRASKA SUMMARY 325

CASE IH CX 60 DIESEL

ALSO CASE IH C 60 DIESEL

16 SPEED

POWER TAKE-OFF PERFORMANCE

Power HP (kW)	Crank shaft speed rpm	Gal/hr (l/h)	lb/hp.hr (kg/kW.h)	Hp.hr/gal (kW.h/l)	Mean Atmospheric Conditions
MAXIMUM POWER AND FUEL CONSUMPTION					
Rated Engine Speed (PTO speed-606 rpm)					
56.2 (41.9)	2250	3.45 (13.06)	0.425 (0.258)	16.29 (3.21)	
Maximum Power (2 Hours)					
56.5 (42.1)	2200	3.41 (12.92)	0.419 (0.255)	16.55 (3.26)	
Standard Power Take-off Speed (540 rpm)					
55.0 (41.0)	2006	3.16 (11.98)	0.399 (0.243)	17.38 (3.42)	

VARYING POWER AND FUEL CONSUMPTION

56.2 (41.9)	2250	3.45 (13.06)	0.425 (0.258)	16.29 (3.21)	Air temperature
48.9 (36.5)	2296	3.12 (11.81)	0.442 (0.269)	15.68 (3.09)	70°F (21°C)
37.3 (27.8)	2333	2.65 (10.05)	0.493 (0.300)	14.06 (2.77)	Relative humidity
25.2 (18.8)	2367	2.08 (7.87)	0.572 (0.348)	12.12 (2.39)	55%
13.0 (9.7)	2389	1.42 (5.36)	0.751 (0.457)	9.22 (1.82)	Barometer
--	2417	0.86 (3.25)	--	--	29.4" Hg (99.4 kPa)

Maximum Torque - 161 lb.-ft. (218 Nm) at 1293 rpm
 Maximum Torque Rise - 22.4%
 Torque rise at 1800 engine rpm - 17%

DRAWBAR PERFORMANCE (Unballasted Front Drive Engaged) FUEL CONSUMPTION CHARACTERISTICS

Power Hp (kW)	Drawbar pull lbs (kN)	Speed mph (km/h)	Crank- shaft speed rpm	Slip %	Fuel Consumption lb/hp.hr (kg/kW.h)	Hp.hr/gal (kW.h/l)	Temp. °F (°C) cool- ing med	Air dry bulb	Barom. inch Hg (kPa)
Maximum Power 7th (1HiTA) Gear									
48.4 (36.1)	3665 (16.30)	4.95 (7.97)	2250	2.4	0.494 (0.301)	14.25 (2.81)	187 (86)	70 (21)	29.4 (99.5)
75% of Pull at Maximum Power 7th (1HiTA) Gear									
37.7 (28.2)	2760 (12.27)	5.13 (8.26)	2323	1.8	0.555 (0.338)	12.69 (2.50)	183 (84)	68 (20)	29.4 (99.5)
50% of Pull at Maximum Power 7th (1HiTA) Gear									
25.5 (19.0)	1835 (8.16)	5.22 (8.40)	2347	1.2	0.663 (0.403)	10.62 (2.09)	183 (84)	68 (20)	29.4 (99.5)
75% of Pull at Reduced Engine Speed 8th (4LoTA) Gear									
37.6 (28.0)	2760 (12.27)	5.11 (8.23)	2118	1.9	0.534 (0.325)	13.20 (2.60)	185 (85)	68 (20)	29.4 (99.5)
50% of Pull at Reduced Engine Speed 8th (4LoTA) Gear									
25.4 (18.9)	1820 (8.09)	5.23 (8.42)	2155	1.3	0.644 (0.392)	10.94 (2.16)	183 (84)	70 (21)	29.4 (99.5)

Location of Test: DLG Testing Station for Agricultural Machinery Max - Eyth - Weg I, D-64823 Gros-Umstadt, Germany

Dates of Test: April - August, 1999

Manufacturer: Case United Kingdom Limited, Doncaster, DN2 4PG, England

FUEL and OIL: Fuel No. 2 Diesel **Specific gravity converted to 60°/60° F (15°/15°C)** 0.832 **Fuel weight** 6.93 lbs/gal (0.830 kg/l) **Oil SAE** 15W-40 **API service classification** CF-4 **Transmission and hydraulic lubricant** Case Hy-Tran Plus fluid **Front axle lubricant** SAE 85W-140 gear oil

ENGINE: Make Perkins Diesel **Type** three cylinder vertical with turbocharger **Serial No.** U323977D **Crankshaft** lengthwise **Rated engine speed** 2250 **Bore and stroke** 3.74" x 5.00" (95.0 mm x 127.0 mm) **Compression ratio** 17.25 to 1 **Displacement** 165 cu in (2700 ml) **Starting system** 12 volt **Lubrication** pressure **Air cleaner** two paper elements **Oil filter** one full flow cartridge **Oil cooler** engine coolant heat exchanger for crankcase oil, radiator for hydraulic and transmission oil **Fuel filter** one paper element **Muffler** vertical **Cooling medium temperature control** thermostat and variable speed fan

CHASSIS: **Type** front wheel assist **Serial No.** JJE 100 1817 **Tread width** rear 55.9" (1420 mm) to 75.7" (1922 mm) front 51.1" (1299 mm) to 74.6" (1894 mm) **Wheel base** 87.2" (2214 mm) **Hydraulic control system** direct engine drive **Transmission** selective gear fixed ratio with partial (2) range operator controlled powershift **Nominal travel speeds mph (km/h)** first 1.34 (2.17) second 1.62 (2.61) third 2.37 (3.82) fourth 2.86 (4.60) fifth 3.52 (5.66) sixth 4.24 (6.82) seventh 5.05 (8.13) eighth 5.51 (8.87) ninth 6.09 (9.80) tenth 6.65 (10.70) eleventh 8.90 (14.32) twelfth 10.73 (17.27) thirteenth 13.19 (21.22) fourteenth 15.90 (25.59) fifteenth 20.67 (33.26) sixteenth 24.92 (40.11) reverse 1.47 (2.37), 2.59 (4.17), 3.83 (6.17), 5.51 (8.87), 6.02 (9.68), 9.71 (15.62), 14.39 (23.15), 22.55 (36.29) **Clutch** multiple dry disc hydraulically operated by foot pedal **Brakes** wet disc hydraulically operated by two foot pedals which can be locked together **Steering** hydrostatic **Power take-off** 540 rpm at 2007 engine rpm **Unladen tractor mass** 7605 lb (3450 kg)

DRAWBAR PERFORMANCE
(Unballasted Front Drive Engaged)
MAXIMUM POWER IN SELECTED GEARS

Power Hp (kW)	Drawbar pull lbs (kN)	Speed mph (km/h)	Crank- shaft speed rpm	Slip %	Fuel Consumption lb/hp.hr (kg/kW.h)	Consumption Hp.hr/gal (kW.h/l)	Temp. °F cool- ing med	°C Air dry bulb	Barom. inch Hg (kPa)
2nd (1LoDD) Gear									
34.7 (25.9)	9160 (40.74)	1.42 (2.29)	2306	14.9	0.639 (0.389)	11.01 (2.17)	184 (84)	66 (19)	29.5 (100.0)
3rd (2LoTA) Gear									
46.0 (34.3)	7980 (35.50)	2.16 (3.48)	2199	7.2	0.514 (0.313)	13.71 (2.70)	187 (86)	66 (19)	29.5 (100.0)
4th (2LoDD) Gear									
45.6 (34.0)	6405 (28.50)	2.67 (4.30)	2190	4.4	0.520 (0.317)	13.53 (2.67)	185 (85)	64 (18)	29.5 (100.0)
5th (3LoTA) Gear									
46.9 (35.0)	5305 (23.60)	3.32 (5.34)	2197	3.6	0.507 (0.309)	13.88 (2.74)	187 (86)	72 (22)	29.5 (100.0)
6th (3LoDD) Gear									
46.7 (34.8)	4340 (19.31)	4.03 (6.49)	2195	2.9	0.508 (0.309)	13.86 (2.73)	189 (87)	70 (21)	29.5 (100.0)
7th (1HiTA) Gear									
47.6 (35.5)	3700 (16.45)	4.82 (7.76)	2195	2.5	0.501 (0.304)	14.07 (2.77)	189 (87)	66 (19)	29.5 (100.0)
8th (4LoTA) Gear									
46.5 (34.7)	3305 (14.70)	5.28 (8.49)	2197	2.2	0.512 (0.311)	13.76 (2.71)	185 (85)	64 (18)	29.5 (100.0)
9th (1HiDD) Gear									
46.1 (34.4)	2965 (13.19)	5.83 (9.39)	2193	2.0	0.516 (0.314)	13.65 (2.69)	187 (86)	64 (18)	29.5 (100.0)
10th (4LoDD) Gear									
43.5 (32.5)	2555 (11.36)	6.39 (10.29)	2194	1.7	0.546 (0.332)	12.90 (2.54)	187 (86)	66 (19)	29.5 (100.0)

Note: The Case IH C 60 Diesel model varies from the Case IH CX 60 Diesel by chassis design and transmission options.

REPAIRS AND ADJUSTMENTS: No repairs or adjustments

REMARKS: All test results were determined from observed data obtained in accordance with official OECD test procedures. This tractor did not meet the manufacturer's claims of 31% torque rise, Cab sound level of 73.0 dB(A), nor 3 point lift capacity of 3665 lbs., optionally 5097 lbs. The performance results on this summary were taken from OECD tests conducted under the Code II Test Code procedure.

We, the undersigned, certify that this is a true summary of data from OECD Report No. **1894**, Nebraska Summary 325, November 27,2000.

Brent T. Sampson
 Test Engineer

L.L. Bashford
 M.F. Kocher
 R.D. Grisso, Jr.
 Board of Tractor Test Engineers

TRACTOR SOUND LEVEL WITH CAB	Front Wheel Drive	
	Engaged dB(A)	Disengaged dB(A)
Maximum Sound Level	79.5	79.5
Bystander		

TIRES AND WEIGHT

Rear Tires No., size, ply & psi (kPa)
Front Tires No., size, ply & psi (kPa)
Height of Drawbar
Static Weight with operator Rear
 Front
 Total

Tested Without Ballast

Two 18.4R34;**, 12(80)
 Two 13.6R24;**, 12(80)
 15.7 in (400 mm)
 4595 lb (2085 kg)
 3175 lb (1440 kg)
 7770 lb (3525 kg)

THREE POINT HITCH PERFORMANCE (OECD Static Test)

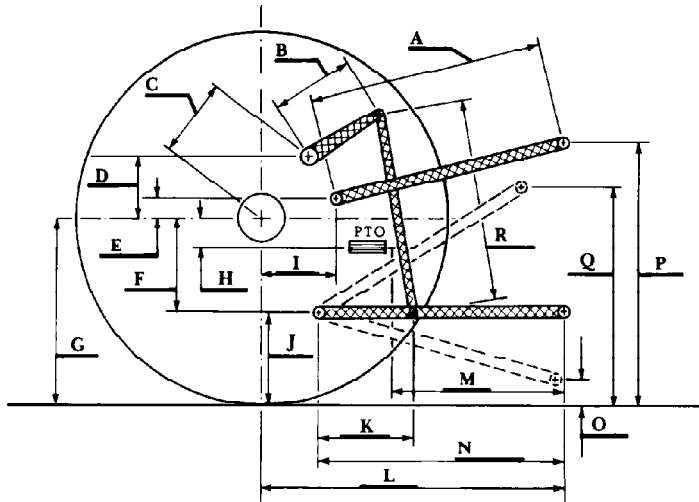
CATEGORY: II

Quick Attach: none

Maximum Force Exerted Through Whole Range: 2630 lbs (11.70 kN)
 4000 lbs (15.30 kN) (with boost cylinder)

- i) Opening pressure of relief valve: NA
- Sustained pressure of the open relief valve: 2555 psi (176 bar)
- ii) Pump delivery rate at minimum pressure: 14.4 GPM (54.6 l/min)
- iii) Pump delivery rate at maximum
 - hydraulic power: 11.5 GPM (43.6 l/min)
 - Delivery pressure: 2365 psi (163 bar)
 - Power: 15.8 HP (11.8 kW)

HITCH DIMENSIONS AS TESTED NO LOAD



	inch	mm
A	28.2	716
B	11.7	298
C	11.6	295
D	11.3	288
E	7.9	200
F	6.7	170
G	30.3	770
H	4.8	122
I	11.8	300
J	23.6	600
K	21.7	550
L	38.4	975
M	21.3	540
N	32.0	814
O	7.9	200
P	47.6	1210
Q	33.9	860
R	29.5	750