

1997

The Internal Transcribed Spacer Region of *Belonolaimus* (Nemata: Belonolaimidae)

T. Cherry

Lincoln High School, Lincoln, NE

A. L. Szalanski

University of Nebraska - Lincoln

T. C. Todd

Kansas State University

Tom Powers

University of Nebraska-Lincoln, tpowers1@unl.edu

Follow this and additional works at: <http://digitalcommons.unl.edu/plantpathpapers>



Part of the [Plant Pathology Commons](#)

Cherry, T.; Szalanski, A. L.; Todd, T. C.; and Powers, Tom, "The Internal Transcribed Spacer Region of *Belonolaimus* (Nemata: Belonolaimidae)" (1997). *Papers in Plant Pathology*. 200.

<http://digitalcommons.unl.edu/plantpathpapers/200>

This Article is brought to you for free and open access by the Plant Pathology Department at DigitalCommons@University of Nebraska - Lincoln. It has been accepted for inclusion in Papers in Plant Pathology by an authorized administrator of DigitalCommons@University of Nebraska - Lincoln.

The Internal Transcribed Spacer Region of *Belonolaimus* (Nemata: Belonolaimidae)¹

T. CHERRY,² A. L. SZALANSKI,³ T. C. TODD,⁴ AND T. O. POWERS³

Abstract: *Belonolaimus* isolates from six U.S. states were compared by restriction endonuclease digestion of amplified first internal transcribed spacer region (ITS1) of the nuclear ribosomal genes. Seven restriction enzymes were selected for evaluation based on restriction sites inferred from the nucleotide sequence of a South Carolina *Belonolaimus* isolate. Amplified product size from individuals of each isolate was approximately 700 bp. All Midwestern isolates gave distinct restriction digestion patterns. Isolates identified morphologically as *Belonolaimus longicaudatus* from Florida, South Carolina, and Palm Springs, California, were identical for ITS1 restriction patterns. The correlation between ITS1 restriction patterns and the distribution of *B. longicaudatus* isolates suggest that the California isolate is a relatively recent introduction into the state.

Key words: *Belonolaimus*, ITS, molecular diagnostics, ribosomal DNA, sting nematode, systematics, taxonomy.

Belonolaimus (sensu Siddiqi, 1986) is a genus of economically important ectoparasitic nematodes located exclusively in North America. On agronomic and native hosts, they are found only in extremely sandy soils, including coastal beach sands. Corn and turfgrass are among the cultivated hosts severely affected by *Belonolaimus* feeding (Smart and Nguyen, 1991; Todd, 1989), and while *Belonolaimus* species are typically considered common pests of graminaceous plants, their host range extends from monocotyledonous plants and gymnosperms to dicots. *Belonolaimus gracilis* was first reported in 1949 as a parasite of pine seedlings in Florida and northern Georgia (Steiner, 1949). Currently, five described species comprise the genus, although cross-breeding, host range, and morphological evidence suggest that additional species remain to be described in the southeast United States (Robbins and Hirschmann, 1974). In 1979, a *Belonolaimus* species was found associated with corn in north-central

Nebraska (Kerr and Wysong, 1979). This represented the northern and westernmost distribution of the genus until the recent discovery of *Belonolaimus* in California (Mundo-Ocampo et al., 1994). The Nebraskan species was identified as *B. nortoni*, but it was noted that these nematodes differed somewhat from descriptions of type specimens found in DeWitt County, Texas. Populations from Nebraska tend to have larger stylets and longer tails (Table 1) (Rau, 1961, 1963). Morphologically similar populations are generally distributed in sandy soils throughout Arkansas, Oklahoma, and Kansas (Todd, 1989). In 1994, *Belonolaimus longicaudatus* was reported infecting bermudagrass on residential estates and golf greens in Palm Springs, California (Mundo-Ocampo et al., 1994). This was the first report of *Belonolaimus* species from Californian soils and could represent a recent introduction into this arid desert location.

To improve our understanding of *Belonolaimus* systematics and distribution, we analyzed the internal transcribed spacer 1 (ITS1) region of representative *Belonolaimus* populations. Using polymerase chain reaction-restriction fragment length polymorphism (PCR-RFLP), individual nematodes were compared at a molecular level to assess genetic identity. The ITS1 region is particularly well-suited for species and population level analyses because of appreciable nucleotide polymorphism (Campbell et al., 1995; Chilton et al., 1995; Ferris et al., 1993, 1994,

Received for publication 31 May 1996.

¹ Journal Series No. 11521, Agricultural Research Division, University of Nebraska, and contribution number 96-503-J of the Kansas Agricultural Experiment Station.

² Student, Lincoln High School, Lincoln, NE 68510.

³ Postdoctoral Research Associate and Associate Professor, Department of Plant Pathology, 406 Plant Sciences Hall, University of Nebraska, Lincoln, NE 68583-0722.

⁴ Nematologist, Department of Plant Pathology, Throckmorton Hall, Kansas State University, Manhattan, KS 66506.

The authors thank O. Becker, R. Giblin-Davis, and R. T. Robbins for kindly supplying nematodes.

E-mail: tpowers@unlinfo.unl.edu

TABLE 1. Average stylet lengths of *Belonolaimus* populations.

Locality	Species	Females	Males	Reference
		N/mean \pm SD (range)	N/mean (range)	
Daytona Beach, FL	<i>B. maritimus</i>	194/149 \pm 7 (119–171)		(Rau, 1963)
Fort Lauderdale, FL	<i>B. longicaudatus</i>	12/119 (112–125)	4/115 (112–116)	(TOP) ^a
Ocala Nat. Forest, FL	<i>B. euthychilus</i>	130/154 \pm 7 (131–168)		(Rau, 1963)
Ocala Nat. Forest, FL	<i>B. gracilis</i>	61/152 (130–168)	58/137 (99–154)	(Rau, 1963)
Sanford, FL	<i>B. longicaudatus</i>	31/127 (116–140)	28/120 (111–132)	(Rau, 1958)
Fulwood, GA	<i>B. longicaudatus</i>	24/129	24/123	(R&H) ^b
Tifton, GA (site 1)	<i>B. longicaudatus</i>	24/128	24/120	
Tifton, GA (site 2)	<i>B. longicaudatus</i>	24/130	24/123	(R&H)
Garden City, KS (site 1)	<i>B. spp.</i>	10/104 (98–108)	5/94 (84–96)	(TCT) ^c
Garden City, KS (site 2)	<i>B. spp.</i>	6/105 (97–115)		(TCT)
Hutchinson, KS	<i>B. spp.</i>	4/100 (95–110)		(TCT)
Wichita, KS	<i>B. spp.</i>	5/102 (97–107)		(TCT)
Sterling, KS	<i>B. spp.</i>	5/105		(TCT)
Battle Creek, NE	<i>B. spp.</i>	10/101 (98–108)		(TOP)
Dudley, NC	<i>B. longicaudatus</i>	24/110		(R&H)
Ocracoke Island, NC	<i>B. maritimus</i>	24/137	24/134	(R&H)
Severn, NC	<i>B. longicaudatus</i>	24/114	24/101	(R&H)
Tarboro, NC	<i>B. longicaudatus</i>	24/107	24/101	(R&H)
Hocheim, TX	<i>B. nortoni</i>	53/90 (78–98)		(Rau, 1963)

^a Measured by T.O. Powers.^b Robbins and Hirschmann (1974).^c Measured by T.C. Todd.

1995; Hoste et al., 1995; Nasmith et al., 1996; Stevenson et al., 1995; Vrain et al., 1992; Wendt et al., 1995; Wesson et al., 1992; Zijlstra et al., 1995). Furthermore, as a genetic marker in taxonomic studies, it has the added advantage of a sizable bibliographic database representing studies of plants, fungi, protozoa, invertebrates, and vertebrates (<http://ianrwww.unl.edu/ianr/plntpath/nematode/nemabib.htm>). This study presents a comparative analysis, using restriction endonuclease digestion and high resolution agarose gels, of the ITS1 region from *Belonolaimus* populations from six U.S. states.

MATERIALS AND METHODS

Nematodes were received from source populations as living specimens in water. Single nematodes were processed for PCR by placing them in a 15- μ l drop of distilled water on a glass cover slip and manually disrupting them as previously described (Pow-

ers and Harris, 1993). Typically, 10 to 14 individual nematodes were assayed per population. The two PCR amplification primers, rDNA2 and rDNA1.58S, are 21 and 20 nucleotides in length, respectively, used at a concentration of 0.3 μ M each, in a reaction buffer containing a 1.5-mM concentration of MgCl₂. The rDNA2 primer (5'-TTGATTACGTCCCTGCCCTTT-3') has been described by Vrain et al. (1992), and rDNA1.58S (3'-GCCACCTAGTGAGCC-GAGCA-5') was designed by comparative sequence alignments of various nematode species. Samples were amplified in 50- μ l volumes, using Perkin-Elmer TC-1 and Techne Gene-E thermal cyclers. Standard profiles included initial denaturation at 94 °C for 2 minutes, followed by 40 cycles of a 1-minute, 94 °C denaturation; a 1-minute, 57 °C annealing; and a 2-minute, 72 °C extension. After PCR amplification the samples remained at 25 °C until removal and were stored at -20 °C prior to digestion.

Amplified ITS1 DNA was digested accord-

ing to manufacturer's recommendations (Promega) using the enzymes Cla I, Hae III, Hha I, Hinc II, Hinf I, Sau 3A, and Taq I. The digestion reaction included 6.0 µl sterile double-distilled H₂O, 6.0 µl amplified ITS1 DNA, 1.4 µl 10× digestion buffer, and 10 units of restriction enzyme. Reactions were incubated at 37 °C for 8 hours except Taq I digestions, which were conducted at 65 °C.

For analysis of the restriction digest, the digested ITS1 DNA was loaded into a 2.5% agarose gel (MetaPhor agarose FMC) buffered with 0.5× TBE (Sambrook et al., 1989). Electrophoresis was normally at a constant voltage of 100 V or less.

DNA sequence of ITS1 was obtained from an individual *Belonolaimus* adult female from the South Carolina population. The amplification product was purified with GeneClean II (Bio 101, Vista, CA) and resuspended in 30 µl of TE (pH 7.5). DNA was end-repaired with T4 DNA Polymerase (Stratagene, La Jolla, CA), digested with Sma I, ligated to dephosphorylated, Sma I digested, Bluescript SK+ plasmid vector (T4 DNA ligase, Stratagene). Transformations used 10–20 µl XL-1 Blue *E. coli* cells (Stratagene). Clones generating anticipated PCR products were converted to single-stranded molecules and sequenced in both directions using two vector primers that target adjacent T3 promotor and T7 promotor regions (Gibco BRL, Gaithersburg, MD). Sequencing was performed on a LI-COR Model 4000 DNA Sequencer (LI-COR, Lincoln, NE) in the University of Nebraska-Lincoln DNA Sequencing Lab, Lincoln, Nebraska.

RESULTS

Amplification of *Belonolaimus* spp. resulted in a 704-bp product, as determined by nucleotide sequencing. The amplification product included 194 bp of the 18 S ribosomal gene and 30 bp of the 5.8 S ribosomal gene (Fig. 1) as well as the ITS1 region. A restriction map of the ITS1 sequence from a South Carolina isolate was generated with Cutter Software (<http://firstmarket.com/firstmarket/cutter/>), revealing several re-

1	50
<u>TTGATTACGT</u>	<u>CCCTGCCCTT</u>
<u>TGTACACACC</u>	<u>GCCCGTCGCT</u>
<u>GCCCGGGACT</u>	
51	100
<u>GAGCCATTTC</u>	<u>GAGAAACTTG</u>
<u>GGGATTGTTG</u>	<u>GTTTAGCGGT</u>
<u>TTTCGGATCG</u>	<u>TTCGGATCG</u>
<i>Taq I</i>	<i>Sau3A I</i>
101	150
<u>CTTCATCGAT</u>	<u>GAGAACCAAT</u>
<u>TTAATCGCAG</u>	<u>TGGCTTGAAC</u>
<u>CGGGCAAAG</u>	<u>CGGGCAAAG</u>
<i>Cla I</i>	
151	200
<u>TGGTAACAAG</u>	<u>GTGGCTGTAG</u>
<u>GTGAACCTGC</u>	<u>TGCCGGATCA</u>
<u>TTACTCATGT</u>	<u>TTACTCATGT</u>
<i>Sau3A I</i>	<i>Sau3A I</i>
201	250
<u>ATTGATCACA</u>	<u>TACACACTTT</u>
<u>TGTGTGCATC</u>	<u>CATGCAGACC</u>
<u>AATCGCTATT</u>	<u>AATCGCTATT</u>
<i>Sau3A I</i>	
251	300
<u>GTCTGGTCAG</u>	<u>CGATGGTCCG</u>
<u>ATTAAGTAGC</u>	<u>GTCCAGCTGG</u>
<u>CTCGTCTGAT</u>	<u>CTCGTCTGAT</u>
301	350
<u>GGGTTTGATG</u>	<u>CTGGCCACTG</u>
<u>TCTGATGTGG</u>	<u>TTAGTGCATCA</u>
<u>CCCGCTGGTT</u>	<u>CCCGCTGGTT</u>
<i>Hae III</i>	<i>Sau3A I</i>
351	400
<u>GTATGCTATG</u>	<u>GAGTCGACGC</u>
<u>TTGTCTGATA</u>	<u>CGGTTACATG</u>
<u>GACCGTGCCC</u>	<u>GACCGTGCCC</u>
<i>Hinf I</i>	
401	450
<u>GTCATCTGGT</u>	<u>CATTGCTCGA</u>
<u>TTGACTCGIT</u>	<u>GTGTTGGATG</u>
<u>GTGTTGTCTG</u>	<u>GTGTTGTCTG</u>
<i>Sau3A I</i>	<i>Hinf I</i>
451	500
<u>TTTACAGCCG</u>	<u>CGATCCAGCG</u>
<u>TGACGTTTAC</u>	<u>AGGGCCTAAC</u>
<u>GGCTTTGCTG</u>	<u>GGCTTTGCTG</u>
<i>Hha I</i>	<i>Sau3A I</i>
<i>Hae III</i>	
501	550
<u>CGCTCTATGC</u>	<u>GTGGTIGAGT</u>
<u>AGTGTGTGTC</u>	<u>TCTCCGTCGG</u>
<u>TGACTGTGAT</u>	<u>TGACTGTGAT</u>
551	600
<u>GAGACCOCGC</u>	<u>GTTAGGCCCC</u>
<u>TTGCCCTGCC</u>	<u>TCTGGCATGT</u>
<u>TGGCTTAAGA</u>	<u>TGGCTTAAGA</u>
<i>Hha I</i>	<i>Hae III</i>
601	650
<u>CTTGATGAGC</u>	<u>GCGATGCCTT</u>
<u>GCGCCGCCAG</u>	<u>CACCCACTTT</u>
<u>ATTCACTACA</u>	<u>ATTCACTACA</u>
<i>Hha I</i>	<i>Hha I</i>
651	700
<u>TTTATATGTT</u>	<u>CGAAGCGAAG</u>
<u>AATTCAAAGTC</u>	<u>TCATCGGTGG</u>
<u>ATCACTCGCC</u>	<u>ATCACTCGCC</u>
<i>Taq I</i>	<i>Sau3A I</i>
701	
<u>TCGT</u>	

FIG. 1. Nucleotide sequence of the amplified ITS1 region of a *Belonolaimus* spp. from South Carolina including portions of the 18 S genes (nucleotide 1–194) and 5.8S gene (675–704). Restriction sites confirmed by PCR-RFLP are in bold. Ribosomal gene sequences are in italics, and primer sequences are underlined.

striction sites for commercially available enzymes. When individuals from the same South Carolina isolate were examined by restriction analysis, patterns were usually identical among all individuals. Figure 2 displays a Taq I digestion of ITS1 from 13 individuals from a Palm Springs, California population. Although small sample sizes prevent a definitive statement on intra-population variation, it appeared that patterns were fixed within the populations but differed among certain populations (Figs. 3–5). Restriction digestion of the amplified product, however, did not always result in the simple digestion

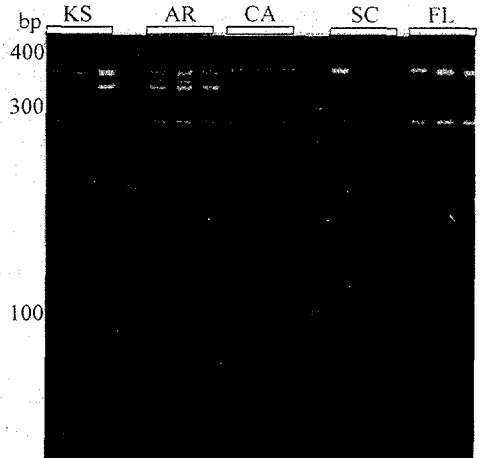
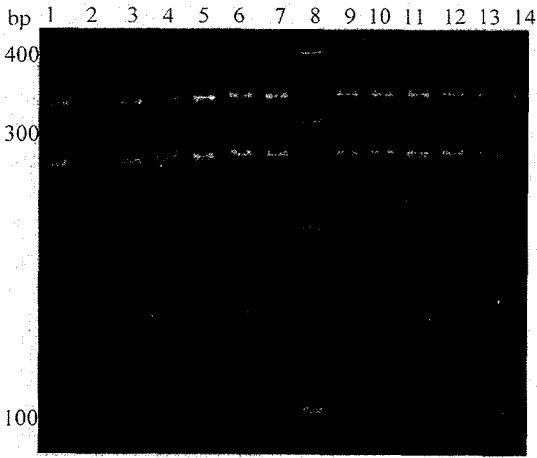


FIG. 2. Taq I digestion patterns of 13 *Belonolaimus longicaudatus* individuals from the Palm Springs, California isolate.

FIG. 3. Hinc II digestion patterns of representative *Belonolaimus* individuals from different isolates. KS = Kansas, AR = Arkansas, CA = California, SC = South Carolina, FL = Florida. Note the three fragments between 300 bp and 400 bp mentioned in RESULTS.

patterns predicted by the nucleotide sequence.

Restriction patterns of the *Belonolaimus* ITS1 region suggest that this region varies within an individual nematode. Individual ITS1 heterogeneity was inferred from the consistent observation of digestion patterns in which the sum of the products exceeded the size of the original, undigested amplification product. For example, Hinc II diges-

tion of ITS1 from the Arkansas population (Fig. 3) displayed three fragments between 300 and 400 bp. Fragment size estimates of 360-, 370-, 380-, and 290-bp Hinc II digestion resulted in fragments totaling approximately 1.4 kb, about twice the size of the undigested amplification product. Hinf I digestion of the Clearwater, Nebraska, isolate (Fig. 4) displayed three fragments of approximately 360, 370, and 380 bp, and Hae

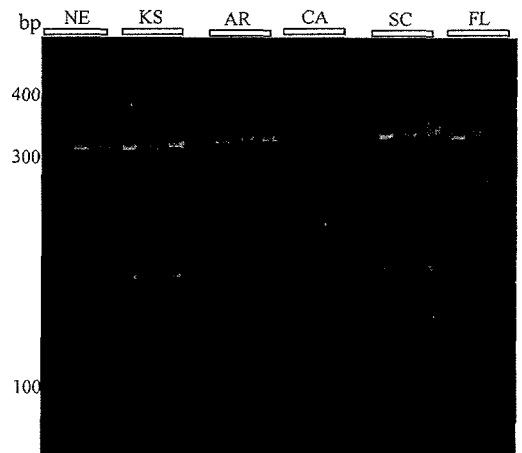
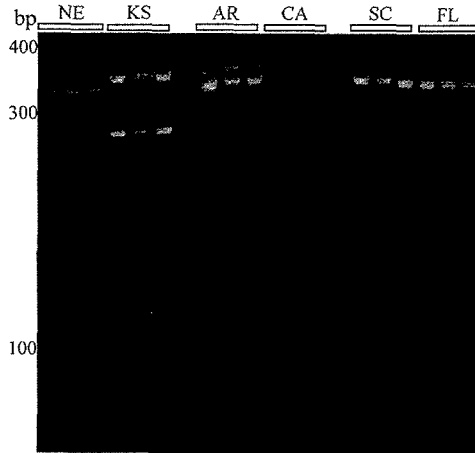


FIG. 4. Hinf I digestion patterns of representative *Belonolaimus* isolates. Restriction fragments of lower intensity are found in the Nebraska (NE) and Arkansas (AR) isolates.

FIG. 5. Hae III digestion patterns of representative *Belonolaimus* isolates. Hae III patterns are similar among geographically distant isolates with the exception of less intense fragments of approximately 580 bp and 560 bp in AR isolates, a unique fragment of approximately 260 in one of the FL individuals, and the additional fragment in NE isolates discussed in RESULTS.

III digestion of the same DNA (Fig. 5) exhibited an additional 170-bp fragment compared to patterns of other populations. These "extra" fragments were produced regardless of duration of digestion, were consistent among individuals from the same population, and persisted in mixing experiments in which nematode DNA was combined with plasmid DNA to evaluate the completeness of digestion. Furthermore, the "extra" fragments were consistently observed in some, but not all, populations.

Table 2 summarizes digestion patterns from the seven enzymes. Key features in these digestion patterns included: (i) individuals from Florida, South Carolina, and Palm Springs, California, produced identical restriction patterns in all cases; (ii) each of the Midwestern *Belonolaimus* populations (Arkansas; Garden City, KS; Hutchinson, KS; Clearwater, NE) produced a unique pattern; (iii) within all populations tested, PCR-RFLP patterns were nearly identical.

DISCUSSION

Restriction digestion of the ITS1 region has revealed an unexpected level of variation among midwestern populations of *Belonolaimus*. Each of the four midwestern isolates gave a unique restriction profile in spite of very similar morphologies. These genetic differences may reflect evolutionary divergence that has occurred in allopatry, since *Belonolaimus* populations are confined to sandy soils that are often geographically isolated. Phylogenetic analysis is necessary to determine population structure and to explain present-day distribution. The restriction analyses do suggest that the California populations may have been established recently, perhaps through introduction of contaminated soil from the southeastern United States. It might be argued that the California population on turfgrass could be derived from native hosts in that desert region; however, the similarity with restriction patterns from the southeast U.S. isolates, and the observed diversity among midwestern isolates, suggests that Californian and southeastern *B. longicaudatus* populations share a relatively recent ancestry.

TABLE 2. Nucleotide base pair fragment length patterns of various digested *Belonolaimus* isolates.

Fragment	Isolate					
	FL/CA/SC	AR	KS I	KS II	NE	
<i>Hinc</i> II (fig. 3)	<i>obs.</i>	<i>pred.</i>	370	370	370	370
	380	365	360	350	290	290
	290	339	350		70	60
			290			
		60				
		50				
<i>Hae</i> III (fig. 5)	<i>obs.</i>	<i>pred.</i>	310	310	310	310
	310	314	180	180	180	180
	180	170	150	150	150	(170)
	150	137	80	80	80	150
	80	83				80
<i>Taq</i> I (fig. 2)	<i>obs.</i>	<i>pred.</i>	300	300	300	300
	300	296	280	280	280	280
	280	258	240	60	60	270
	60	59	(200)	40	40	60
	40	47	60			40
		44	40			
<i>Hinf</i> I (fig. 4)	<i>obs.</i>	<i>pred.</i>	(350)	350	350	(350)
	330	361	330	290	290	(345)
	330	281	(290)		70	330
		62				
<i>Sau</i> 3A	<i>obs.</i>	<i>pred.</i>	500	300	300	300
	(490)	228	300	250	250	250
	460	132	200	150	150	240
	(440)	95	100	100	100	110
	100	90	90	90	90	90
	90	67		20		
		59				
	20					
<i>Cla</i> I	<i>obs.</i>	<i>pred.</i>	600	600	600	600
	600	598	110	110	110	110
	110	106				
<i>Hha</i> I	<i>obs.</i>	<i>pred.</i>	450	450	450	450
	550	459	(440)	100	100	100
	80	100	100	80	80	80
	40	52	80	50	50	50
		12	50			40
		40				

() = bands that are of lesser intensity.
 FL = Florida; Ca = California; SC = South Carolina; Ar = Arkansas.
 KS I = Hutchinson, Kansas; KS II = Garden City, Kansas; NE = Nebraska.
 Predicted patterns (pred.) based upon DNA sequence, observed (obs.) inferred from agarose gels.

ITS1 heterogeneity within individuals has been observed in *Meloidogyne* (Zijlstra et al., 1995), *Trichostrongylus* (Hoste et al., 1995),

and other invertebrates (Wesson et al., 1992), but the structural nature of this heterogeneity in *Belonolaimus* is unclear. In the mitotically parthenogenetic, polyploid *Meloidogyne* species, heterogeneity might be expected, particularly if these species had a recent hybridogenetic origin (Hyman and Powers, 1991). The genome of *M. arenaria* has been shown to possess a complex array of ribosomal variants (Vahidi and Honda, 1991; Vahidi et al., 1991). *Belonolaimus*, however, is a taxon of diploid, amphimictic species. The experiments reported here cannot distinguish between variation among copies derived from a single locus of the ribosomal repeating array of genes, the presence of a second variant ribosomal locus, or two ribosomal alleles constituting a ribosomally heterozygous individual. If the heterogeneity results from more than one locus on the genome, then both loci have preserved the identical ITS1 size, and all individuals in the population maintain the same variant ITS1 sequences. Regardless of the underlying structural basis for the polymorphism among populations, it is apparent that these genetic differences can distinguish among populations and are convenient diagnostic markers.

LITERATURE CITED

- Campbell, A. J. D., R. B. Gasser, and N. B. Chilton. 1995. Differences in a ribosomal DNA sequence of *Strongylus* species allows identification of single eggs. *International Journal for Parasitology* 25:359-365.
- Chilton, N. B., R. B. Gasser, and I. Beveridge. 1995. Differences in a ribosomal DNA sequence of morphologically indistinguishable species within the *Hypodontus macropi* complex (Nematoda, Strongyloidea). *International Journal for Parasitology* 25:647-651.
- Ferris, V. R., J. M. Ferris, and J. Faghihi. 1993. Variation in spacer ribosomal DNA in some cyst-forming species of plant-parasitic nematodes. *Fundamental and Applied Nematology* 16:177-184.
- Ferris, V. R., J. M. Ferris, J. Faghihi, and A. Ireholm. 1994. Comparisons of isolates of *Heterodera avenae* using 2-D PAGE protein patterns and ribosomal DNA. *Journal of Nematology* 26:144-151.
- Ferris, V. R., L. I. Miller, J. Faghihi, and J. M. Ferris. 1995. Ribosomal DNA comparisons of *Globodera* from two continents. *Journal of Nematology* 27:273-283.
- Hoste, H., N. B. Chilton, and I. Beveridge. 1995. Differences in the second internal transcribed spacer (ribosomal DNA) between five species of *Trichostrongylus* (Nematoda, Trichostrongylidae). *International Journal for Parasitology* 25:75-80.
- Hyman, B. C., and T. O. Powers. 1991. Integration of molecular data with systematics of plant-parasitic nematodes. *Annual Review of Plant Pathology* 29:89-107.
- Kerr, E. D., and D. S. Wyson. 1979. Sting nematode, *Belonolaimus* sp., in Nebraska. *Plant Disease Reporter* 63:506-507.
- Mundo-Ocampo, M., J. O. Becker, and J. G. Baldwin. 1994. Occurrence of *Belonolaimus longicaudatus* on bermudagrass in the Coachella Valley. *Plant Disease* 78:529.
- Nasmith, C. G., D. Speranzini, R. Jeng, and M. Hubbes. 1996. RFLP analysis of PCR-amplified ITS and 26S ribosomal genes of selected entomopathogenic nematodes (Steinernematidae, Heterorhabditidae). *Journal of Nematology* 28:15-25.
- Powers, T. O., and T. S. Harris. 1993. A polymerase chain reaction method for identification of five major *Meloidogyne* species. *Journal of Nematology* 25:1-6.
- Rau, G. J. 1958. A new species of sting nematode. *Proceedings of the Helminthological Society of Washington* 25:95-98.
- Rau, G. J. 1961. Amended descriptions of *Belonolaimus gracilis* Steiner, 1949 and *B. longicaudatus* Rau, 1958 (Nematoda: Tylenchida). *Proceedings of the Helminthological Society of Washington* 28:198-200.
- Rau, G. J. 1963. Three new species of *Belonolaimus* (Nematoda: Tylenchida) with additional data on *B. longicaudatus* and *B. gracilis*. *Proceedings of the Helminthological Society of Washington* 30:119-128.
- Robbins, R. T., and H. Hirschmann. 1974. Variation among populations of *Belololaimus longicaudatus*. *Journal of Nematology* 6:87-94.
- Sambrook, J., E. F. Fritsch, and T. Maniatis. 1989. *Molecular cloning: A laboratory manual*, 2nd Ed. Cold Spring Harbor, NY: Cold Spring Harbor Laboratory.
- Siddiqi, M. R. 1986. *Tylenchida. Parasites of plants and insects*. St. Albans, UK: Commonwealth Institute of Parasitology.
- Smart, G. C., and K. B. Nguyen. 1991. Sting and awl nematodes: *Belonolaimus* spp. and *Dolichodoros* spp. Pp. 627-667 in W. R. Nickle, ed. *Manual of agricultural nematology*. New York: Marcel Dekker.
- Steiner, G. 1949. Plant nematodes the grower should know. *Proceedings of the Soil Science Society of Florida* 4B:72-117.
- Stevenson, L. A., N. B. Chilton, and R. B. Gasser. 1995. Differentiation of *Haemonchus placei* from *H. contortus* (Nematoda, Trichostrongylidae) by the ribosomal DNA second internal transcribed spacer. *International Journal for Parasitology* 25:483-488.
- Todd, T. C. 1989. Population dynamics and damage potential of *Belonolaimus* sp. on corn. Supplement to the *Journal of Nematology* 21:697-702.
- Vahidi, H., and B. M. Honda. 1991. Repeats and sub-repeats in the intergenic spacer of rDNA from the nematode *Meloidogyne arenaria*. *Molecular and General Genetics* 227:334-336.
- Vahidi, H., A. Purac, J. M. LeBlanc, and B. M. Honda. 1991. Characterization of potentially functional 5S rRNA-encoding genes within ribosomal repeats of the nematode *Meloidogyne arenaria*. *Gene* 108:281-284.
- Vrain, T. C., D. A. Wakarchuk, A. C. Levesque, and

R. I. Hamilton. 1992. Intraspecific rDNA restriction fragment length polymorphism in the *Xiphinema americanum* group. *Fundamental and Applied Nematology* 15:563-573.

Wendt, K. R., A. Swart, T. C. Vrain, and J. M. Webster. 1995. *Ditylenchus africanus* sp. n. from South Africa—A morphological and molecular characterization. *Fundamental and Applied Nematology* 18:241-250.

Wesson, D. M., C. H. Porter, and F. H. Collins. 1992. Sequence and secondary structure comparisons of ITS rDNA in mosquitoes (Diptera: Culicidae). *Molecular Phylogenetics and Evolution* 1:253-269.

Zijlstra, C., A. E. M. Lever, B. J. Uenk, and C. H. Van Silfhout. 1995. Differences between ITS regions of isolates of root-knot nematodes *Meloidogyne hapla* and *M. chitwoodi*. *Phytopathology* 85:1231-1237.