

2002

Selected Reflection Imaging: A Useful Tool for Imaging Nanocomposite Magnetic Materials

Yi Liu

University of Nebraska-Lincoln, yliu@unl.edu

Y. Qiang

University of Nebraska - Lincoln

M. Yu

University of Nebraska - Lincoln

J. Ping Liu

University of Nebraska-Lincoln, pliu@uta.edu

David J. Sellmyer

University of Nebraska-Lincoln, dsellmyer@unl.edu

Follow this and additional works at: <http://digitalcommons.unl.edu/physicsellmyer>

 Part of the [Physics Commons](#)

Liu, Yi; Qiang, Y.; Yu, M.; Liu, J. Ping; and Sellmyer, David J., "Selected Reflection Imaging: A Useful Tool for Imaging Nanocomposite Magnetic Materials" (2002). *David Sellmyer Publications*. 212.

<http://digitalcommons.unl.edu/physicsellmyer/212>

This Article is brought to you for free and open access by the Research Papers in Physics and Astronomy at DigitalCommons@University of Nebraska - Lincoln. It has been accepted for inclusion in David Sellmyer Publications by an authorized administrator of DigitalCommons@University of Nebraska - Lincoln.

Selected Reflection Imaging: A Useful Tool for Imaging Nanocomposite Magnetic Materials

Y. Liu^{1,2}, Y. Qiang², M. J. Yu², J. P. Liu² and D.J. Sellmyer²

1 CLAIM, Department of Mechanical Eng.
University of Michigan, Ann Arbor, MI 48109-2125

2 Center for Materials Research and Analysis
University of Nebraska, Lincoln, NE 68588.

The great strength of transmission electron microscope (TEM) is its capability to access to both real space (imaging) and reciprocal space (diffraction). Selected reflection imaging (SRI) can relate the diffraction of nanostructured materials with the image, providing information otherwise not possible. The experimental set up of SRI is given by Liu and Sellmyer [1]. In this paper we present some new measurements on nanocomposite magnetic materials.

1. Measurement of Co-Cu nanocomposite: The Co-Cu nanocomposite specimens have been prepared by a cluster source. The cluster size can be controlled from a few nanometers to tens of nanometers. Figure 1 shows an example of (a) diffraction pattern (b) SRI of Co clusters using Co (202). (c) SRI of Cu clusters using Cu (202). The crystal structure of the Co clusters is well matched to the FCC structure. Both lattice parameter measurement and magnetic properties suggest the existence of Co oxide phase [2].

2. Measurement of volume fraction of L1₀ FePt and FCC Fe in nanocomposite FePt/Fe films: Exchange-coupled permanent magnets in the FePt/Fe have been synthesized by sputtering [3]. Two phases, an ordered L1₀ phase and a disordered FCC phase were identified by using nanodiffraction [4]. Superlattice reflection (001) image and (101) images have been used to measure the volume fraction of the ordered phase. Because Pt has large solubility in Fe, the FCC Fe contains high concentration of Pt and has a composition close to L1₀ structure FePt phase. This makes other method such as EELS mapping less effective. SRI is most sensitive to the ordering, the crystal structure. Even the two phases have the same composition, one is ordered and the other is not, SRI can generate high contrast using superlattice.

3. Measurement of texture in Co-based recording media and CoPt-C based recording media. The measurement of texture by SRI is straightforward. The grains appearing bright in a SRI image are the grains that have the corresponding atomic planes parallel to the electron beam. Volume fraction of grains with c-axis in film plane in hexagonal Co-alloy, for example, have been measured using the (0001) reflection to form the image.

References

- [1] Y. Liu and D. J. Sellmyer, Proc. of Microscopy and Microanalysis 1998, Atlanta, Georgia, 752.
- [2] J. M. Meldrim, Y. Qiang, Y. Liu, H. Haberland and D. J. Sellmyer, J. Appl. Physics, 87 (2000) 7013.
- [3] J.P. Liu, C.P. Luo, Y. Liu, D.J. Sellmyer, Appl. Phys. Lett. 72, (1998) 483.
- [4] Y. Liu, P. Liu and D.J. Sellmyer, Nanostructured materials, Vol. 12, (1999)1027.
- [5] This research is supported by CMRA, NSF grant 0076504.

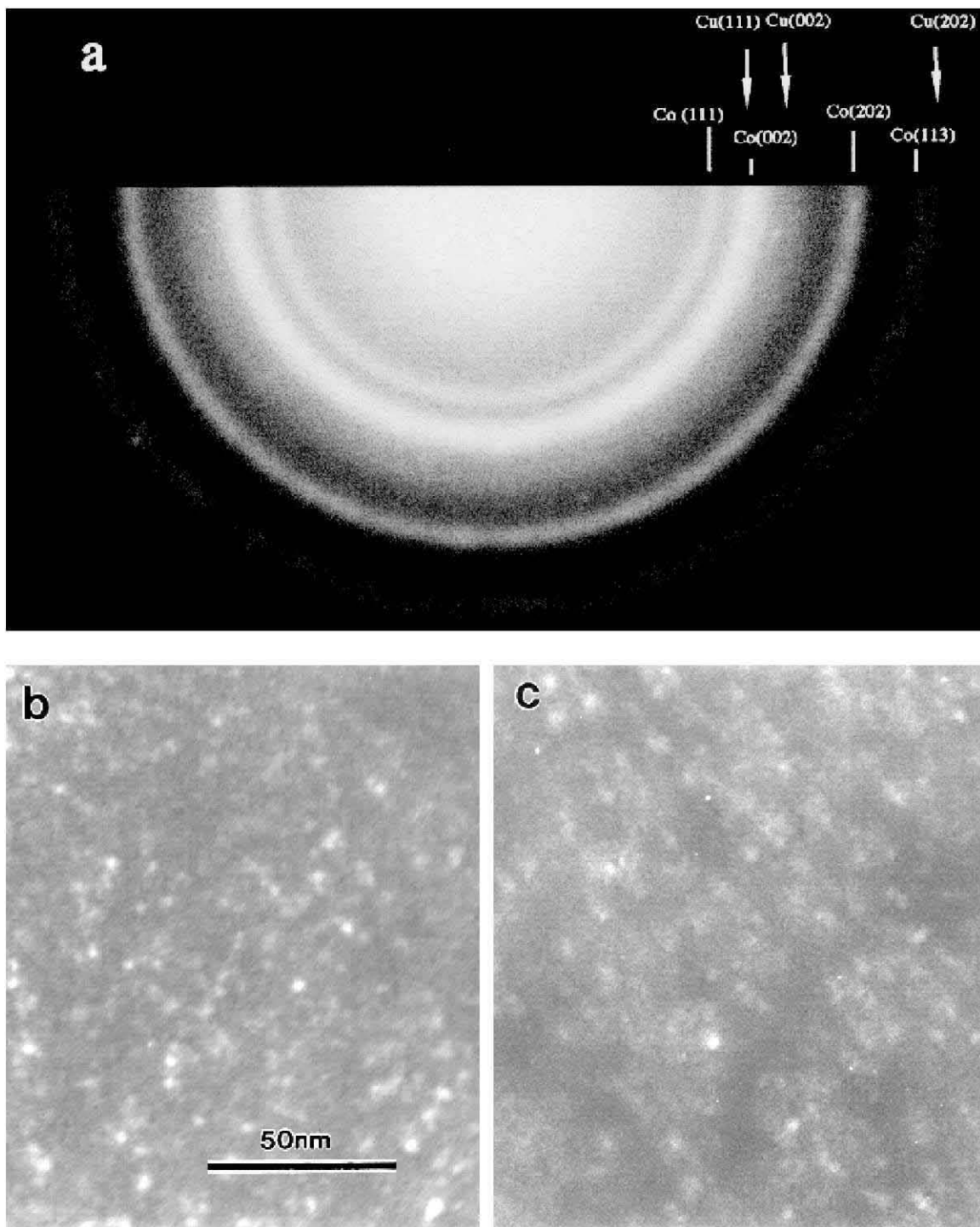


Figure 1 (a) selected area diffraction of Co cluster and Cu cluster composite, (b) Co (202) image and (c) Cu (202) image.