

University of Nebraska - Lincoln

DigitalCommons@University of Nebraska - Lincoln

---

Agricultural Research Division News & Annual  
Reports

Agricultural Research Division of IANR

---

2-1978

# Agricultural Experiment Station News February 1978

Follow this and additional works at: <http://digitalcommons.unl.edu/ardnews>



Part of the [Agriculture Commons](#)

---

"Agricultural Experiment Station News February 1978" (1978). *Agricultural Research Division News & Annual Reports*. 233.  
<http://digitalcommons.unl.edu/ardnews/233>

This Article is brought to you for free and open access by the Agricultural Research Division of IANR at DigitalCommons@University of Nebraska - Lincoln. It has been accepted for inclusion in Agricultural Research Division News & Annual Reports by an authorized administrator of DigitalCommons@University of Nebraska - Lincoln.



THE AGRICULTURAL EXPERIMENT STATION  
 INSTITUTE OF AGRICULTURE  
 AND NATURAL RESOURCES  
 UNIVERSITY OF NEBRASKA-LINCOLN  
 H. W. OTTOSON, DIRECTOR

# Agricultural Experiment Station

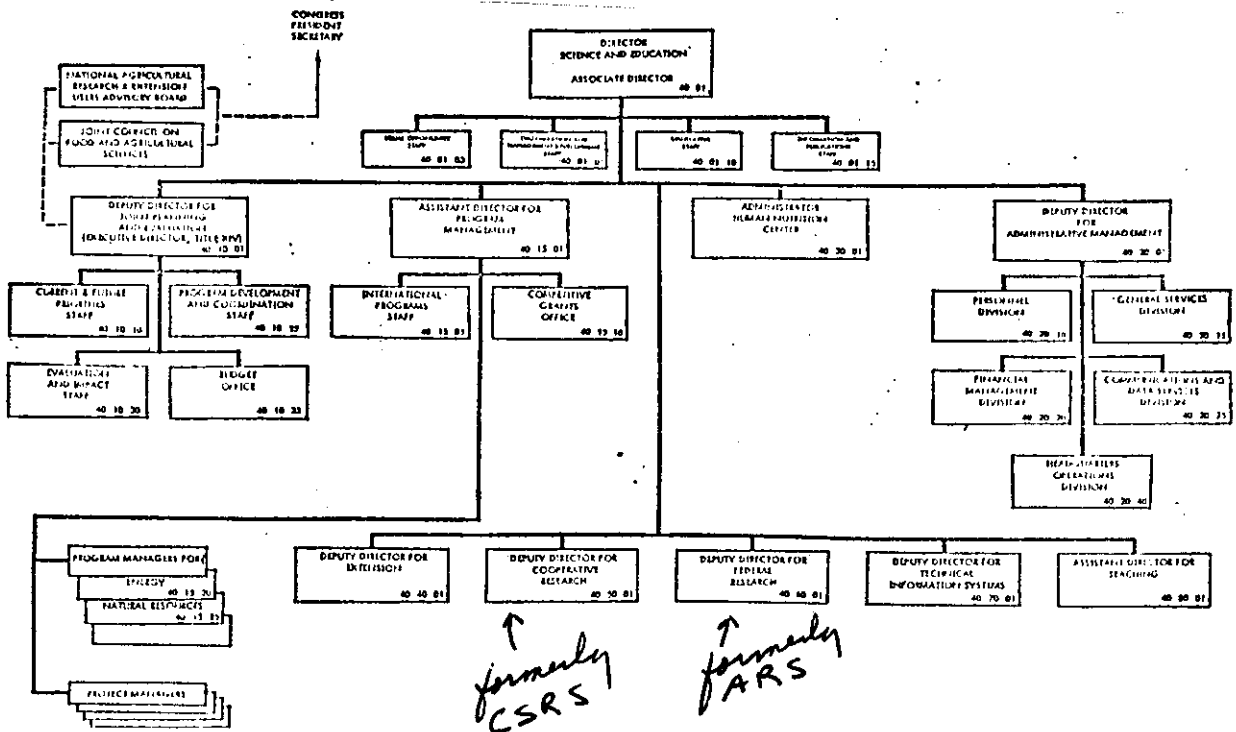


Vol. 10, No. 8, February, 1978

FROM THE DIRECTORS DESK

## S-E-A Has Put To Sea!

The new Science and Education Administration of the U.S. Department of Agriculture became official on January 24 with its publication in the Federal Register. An organization chart of the new agency is shown below:



In the above, the State Experiment Station system relates to "Cooperative Research", formerly CSRS; ARS is now "Federal Research". A newcomer to USDA is "Teaching" for resident instruction in the Land Grant Colleges and universities. Note also boxes for International Programs, Competitive Grants, and Human Nutrition. A plus for the new organization is that it brings the old CSRS, ARS, and Agricultural Extension into much closer organizational proximity than formerly.

If you have questions please give them to us - Experiment Station Advisory Committee.

Our recent election resulted in the following elected committee members: District I, Raymond Supalla; District II, Darrell G. Watts; III, Robert Mumm; IV, David Lewis; V, Floyd Mather; VI, Donald Ferguson; VII, Lowell Satterlee; VIII, Ivan Rush, and District IX, Clair Hibbs.

We shall call these people together soon for their first meeting.

Howard W. Ottoson

#### PERSONNEL ACTIONS

Anderson, Dale G. - Ag. Econ. - Prof - Leave of Absence (to Kansas State University)  
Bratkovich, Steven M. - Asst Prof - For, Fish, Wildlife - Resig (to Muskogee, Okla.)  
Helms, Thomas J. - Assoc Prof & Asst Dean - Ent - Resig (to Monsanto Co, St. Louis)  
Lobaugh, Stephen J. - Instructor - Cons. & Surv. Div. - Special Appt. - New  
Naber, Keith M. - Asst. Prof. - Ag. Econ. - Federal Appt. - New

#### GRANTS AND CONTRACTS

Anderson, F. N. - Agron. (PH Sta.) - Miscellaneous Donors	\$ 450
Bullerman, L. B. - Food Sci. & Tech. - Dept. of Health, Education & Welfare	24,473
Burnside, O. C. - Agron. - Shell Chemical Company	750
Clanton, D. C. - An. Sci. (NP Sta.) - American Breeders Service	882
Dickason, E. A. - Entomology - ICI United States Inc.	500
Fenster, C. R. - Agron. (PH Sta.) - E. I. DuPont de Nemours & Company	750
Gast, R. G. - Agron. - Garst and Thomas Hybrid Corn Company	2,500
Gilbertson, C. B. - Ag. Eng. - Nat'l. Pork Producers Council	10,000
Klopfenstein, T. J. - An. Sci. - Agricultural Products Committee	3,500
Lewis, A. J. - An. Sci. - Monsanto Company	3,360
McCarty, M. K. - Agron. - Univ. of Kansas Center for Research, Inc.	3,636
Moomaw, R. S. - Agron. (NE Sta.) - Dow Chemical Company	500
Moser, L. E. - Agron. - American Forage and Grassland Council	1,200
Peters, L. L. - Entomology (SC Sta.) - ICI Americas, Inc.	500
Supalla, R. J. - Ag. Econ. - Natural Resources Commission	31,826
Von Bargaen, K. - Ag. Eng. - Deere & Company	23,465
Wicks, G. A. - Agron. (NP Sta.) - E. I. DuPont de Nemours & Company	750
Wicks, G. A. - Agron. (NP Sta.) - Shell Chemical Company	500
Wilson, Jr., R. G. - Agron. (PH Sta.) - Dow Chemical Company	500

#### GENERAL NOTES

1. Thank you numerous readers of this letter who responded to last months solicitation of comments about its usefulness. It appears that the newsletter is read and continuation is deserved. There were some good suggestions for other kinds of news notes. The only question expressed by several is the value of the publication list attachment. We may discontinue that list unless some express a desire to have it continue.
2. In the current quarter IANR staff obtained 30 visiting scholar awards from the Research Council. This is not hardly our share. Initiatives in securing these grants must be with staff members and advanced planning is required. You are urged to pursue these opportunities.
3. Sahs sez - Your plans and arrangements for the next field work season should be well along. If they aren't, time is short and they should be developed soon. This getting ready process can also relieve winter "cabin fever".
4. Schneider on safety - Automatic transmissions cause drive wheels to drive while front wheels slide when breaking gingerly on slippery surfaces. Putting the transmission in neutral when breaking will help maintain control.
5. The Nebraska Station submitted seven fine proposals for 1978 "CSRS" special grants. This is the continuing program of several years past and relates to the special areas of soybeans, integrated pest management, transportation and genetic vulnerability.
6. We have just completed a comprehensive review of Entomology programs by an outside review team. A similarly comprehensive review of all phases of Agronomy programming is scheduled for March 6 - 10 with a seven man team. We are now scheduling visits to district stations in connection with these reviews because of the substantial research and extension components represented there.
7. Poise is to look like an owl while behaving like a donkey.

R. W. Kleis

NEBRASKA AGRICULTURAL EXPERIMENT STATION PUBLICATIONS - January 1978

Journal Articles (contact authors for more information)

5443. Pesticide Interactions of Oats (*Avena sativa* L. 'Neal'). Dennis L. Bucholtz and Terry L. Lavy. *Journal of Agriculture and Food Chemistry*.
5444. A Simple Method for Stabilizing Protein Sulhydryl Groups During SDS Gel Electrophoresis. Leslie C. Lane. *Analytical Biochemistry*.
5445. Gastric Disappearance of Dietary Fiber by Adolescent Boys. S. Gramstorff Fetzer, C. Kies and H. M. Fox. *Cereal Chemistry*.
5446. Zinc Nutritional Status of Adult Men as Affected by Varying Levels of Dietary Hemicellulose. C. Kies, H. M. Fox and D. Beshgetoor. *Cereal Chemistry*.
5447. Attitudes and Practices of Nebraska Physicians Concerning Infant Feeding and Nutrition. Susan E. Milton and H. Fox. *Journal of American Dietetics Assn.*
5448. Protein Nutritional Status of Human Adults and Adolescents as Affected by Cellulose, Hemicellulose and Pectin. C. Kies and H. M. Fox. *Cereal Chemistry*.
5449. A Natural Vector of Maize Chlorotic Mottle Virus and the Presence of the Virus in Nebraska. Leslie C. Lane. *Plant Disease Reporter*.
5450. Herbage Yield and Quality of Threadleaf Sedge. J. Stubbendieck and Michael A. Foster. *Journal of Range Management*.
5451. Windbreaks for Reducing Moisture Stress. Norman J. Rosenberg. *American Society of Agricultural Engineers Monograph on Modification of the Aerial Environment of Plants*.
5452. Effect of Grasses and Soil Properties on Wind Erosion in Sand Blowouts. M. J. Malakouti, D. T. Lewis and J. Stubbendieck. *Journal of Range Management*.
5453. Selection in Beef Cattle. III. Correlated Response of Carcass Traits to Selection for Weaning Weight, Yearling Weight and Muscling Score in Cattle. Robert M. Koch. *Journal of Animal Science*.
5454. Studies on Protein, Lysine, and Leaf Rust Reactions in the Wheat Cultivar Atlas 66 Using Chromosome Substitute. R. Morris, P. J. Mattern, J. W. Schmidt and V. A. Johnson. *5th International Wheat Genetics Symposium Proceedings*.
5455. Radiation Resistant Vegetative Bacteria in a Proposed System of Radappertization of Meats. R. B. Maxcy and D. B. Rowley.
5456. A Preliminary Evaluation of Topcrosses in *Sorghum bicolor* (L.) Moench. W. M. Ross and K. D. Kofoid. *Maydica*.
5457. Comparative B-Vitamin Content and Organoleptic Qualities of Cultured and Acidified Sour Cream. A. J. Kwan, A. Kilara and K. M. Shahani. *Journal of Dairy Science*.
5458. A Simple Procedure for Disruption of Fungal Spores. James L. Van Etten and Shelby N. Freer. *Applied & Environmental Microbiology*.

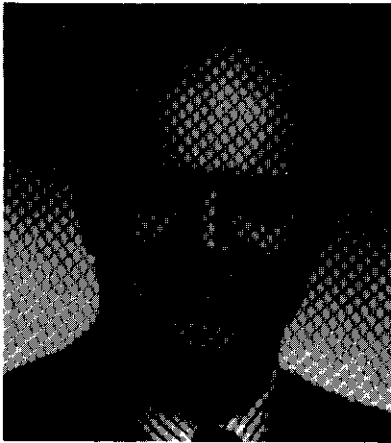
5459. Heterosis, Maternal and Breed Effects in Beef Cattle. I. Preweaning Traits. Keith E. Gregory, L. V. Cundiff, R. M. Koch, D. B. Laster and G. M. Smith. Journal of Animal Science.
5460. Heterosis, Maternal and Breed Effects in Beef Cattle. II. Growth Rate and Puberty in Females. Keith E. Gregory, D. B. Laster, L. V. Cundiff, R. M. Koch and G. M. Smith. Journal of Animal Science.
5461. Heterosis, Maternal and Breed Effects in Beef Cattle. III. Growth Traits of Steers. Keith E. Gregory, R. M. Koch, D. B. Laster, L. V. Cundiff and G. M. Smith. Journal of Animal Science.
5462. Heterosis, Maternal and Breed Effects in Beef Cattle. IV. Carcass Traits of Steers. Keith E. Gregory, J. D. Crouse, R. M. Koch, D. B. Laster, L. V. Cundiff and G. M. Smith. Journal of Animal Science.
5463. Characterization of Biological Types of Cattle - Cycle III: I. Birth and Weaning Traits. Keith E. Gregory, Gerald M. Smith, L. V. Cundiff, R. M. Koch and D. B. Laster. Journal of Animal Science.
5464. Disappearance of Patulin in Soil and the Effect of NH<sub>3</sub> on Patulin Phytotoxicity. James R. Ellis, T. M. McCalla and Fred A. Norstadt. Applied and Environmental Microbiology.

Journal Abstracts (contact authors for more information)

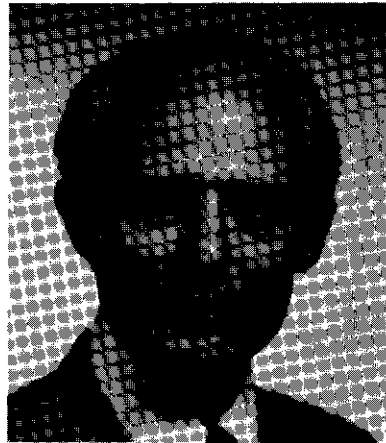
- 77-974. The Genus Carduus in the United States. M. K. McCarty. Weed Science.
- 78-975. Apricot Kernel Oil, Soybean Oil or Safflower Oil Dietary Effects on Serum Lipid Patterns of Adolescent Boys. C. Kies, C. A. Beier and H. M. Fox. Institute of Food Technologists Annual Meeting Program.
- 78-976. Calcium and Magnesium Nutritional Status of Adolescent Humans Receiving Cellulose or Hemicellulose Supplements. M. McHale, C. Kies and H. M. Fox. Institute of Food Technologists Annual Meeting Program.
- 78-977. Multipurpose Tree Plantations. Walter T. Bagley. 8th World Forestry Congress, Jakarta, Indonesia, 16-28 October, 1978.
- 78-978. Sugarbeet Weed Control Studies in Nebraska in 1977. Robert G. Wilson, Frank N. Anderson and Gail A. Wicks. Proceedings 1977 North Central Weed Control Conference.
- 78-979. Physiological Effects of 39-MHz RF Exposure on Tenebrio Molitor. S. O. Nelson and H. J. Ball. 1978 International Symposium on the Biological Effects of Electromagnetic Waves, Ottawa, Ontario, Canada.

BULLETINS PRINTED

- OTC 183. Performance of Soybean Varieties in Nebraska, 1977. A. F. Dreier, J. H. Williams, L. V. Svec, R. S. Moomaw, P. H. Grabouski and J. E. Specht.
- OTC 184. Nebraska Corn Performance Tests, 1977. A. F. Dreier, P. H. Grabouski, R. S. Moomaw, L. A. Nelson, L. V. Svec and P. T. Nordquist.



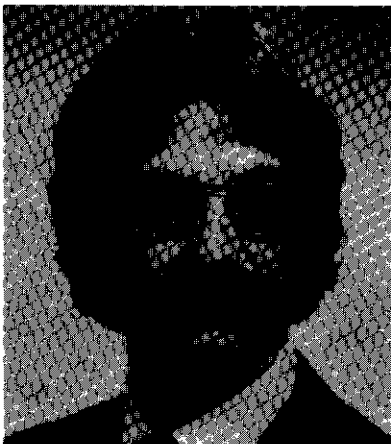
Dr. Earl O. Dickinson is the Head of the Department of Veterinary Science. He came in April 1977 from Oregon State University.



Dr. Merwin Frey, Prof. of Veterinary Science, came from Oklahoma State University in September 1977. He is a veterinary microbiologist.



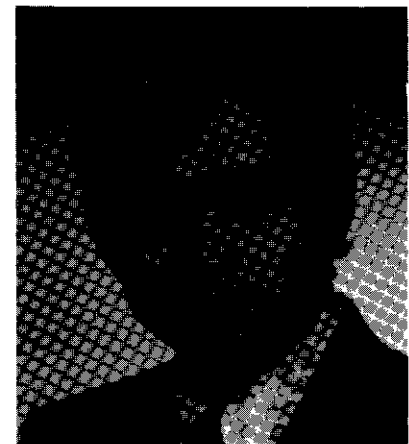
Dr. Roger Gold, Prof. of Entomology, came from the University of Arizona in September 1977 to become Coordinator of IANR Environmental Programs.



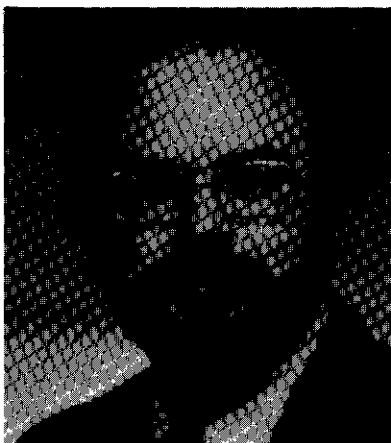
Dr. Philip A. Handell III, Assist. Prof. of Food Science and Technology, came from the University of Massachusetts in August 1977.



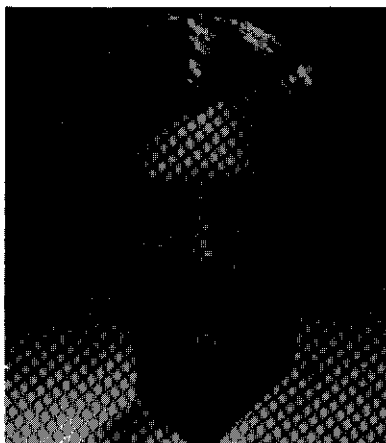
Dr. Thomas Holtzer, Assist. Prof. of Entomology, came from Texas A & M. University in February 1977.



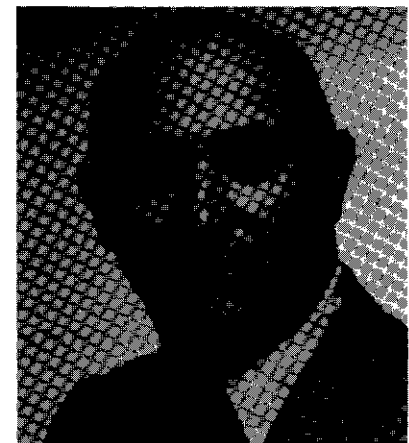
Dr. Roger Kittock, Assist. Prof. of Animal Science, came from the University of Florida in December 1977.



Dr. Norman Klocke, Assist. Prof. of Agricultural Engineering, came from EPA in Kansas City in December 1976. He is stationed in North Platte.



Dr. Stanley Wallen, Assist. Prof. of Food Science and Technology, came from Massachusetts in September 1977.



Dr. Wallace B. Wren, Assoc. Prof. of Veterinary Science, came from Omaha in October, 1977. He is a veterinary pathologist.