

University of Nebraska - Lincoln

DigitalCommons@University of Nebraska - Lincoln

Nebraska Tractor Tests

Tractor Test and Power Museum, The Lester F. Larsen

January 1950

Advertising Brochure: Minneapolis-Moline Comfort Tractor

Nebraska Tractor Test Lab

University of Nebraska-Lincoln, tractortestlab@unl.edu

Follow this and additional works at: <https://digitalcommons.unl.edu/tractormuseumlit>



Part of the [Energy Systems Commons](#), [History of Science, Technology, and Medicine Commons](#), [Other Mechanical Engineering Commons](#), [Physical Sciences and Mathematics Commons](#), [Science and Mathematics Education Commons](#), and the [United States History Commons](#)

Nebraska Tractor Test Lab, "Advertising Brochure: Minneapolis-Moline Comfort Tractor" (1950). *Nebraska Tractor Tests*. 459.

<https://digitalcommons.unl.edu/tractormuseumlit/459>

This Article is brought to you for free and open access by the Tractor Test and Power Museum, The Lester F. Larsen at DigitalCommons@University of Nebraska - Lincoln. It has been accepted for inclusion in Nebraska Tractor Tests by an authorized administrator of DigitalCommons@University of Nebraska - Lincoln.

Hats Off TO A GREATER MODERN **TRACTOR**

by the MODERN TRACTOR PIONEERS





7
MOL
T RAC

The
SPECIAL
MM TI

FIVE FORWARD
FROM A CRAWL
MILES PEI

THE FARMER GETS HIS WISH THE ALL-WEATHER TRACTOR

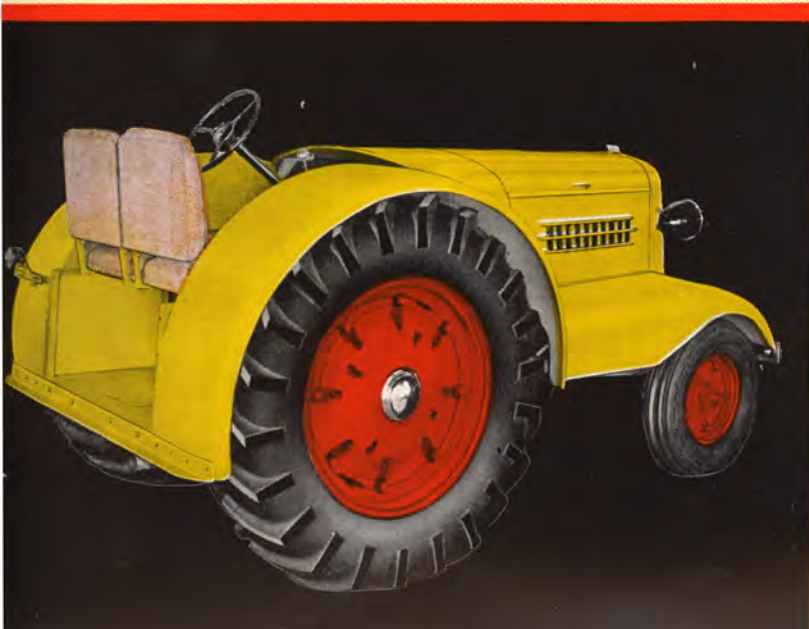
Miss Minnie Moline presents the World's Most Modern Tractor — a "COM-70TRACTOR" built with a cab! Proof again that human desire for comfort is the same everywhere. Just as the city man needs a comfortable closed car to pursue his activities, so the farmer who spends a big share of his time on a tractor needs and wants greater comfort on the job.

In a recent survey 50% of the thousands of farmers contacted wanted a tractor with a CAB. We have answered that request with the New Special DE LUXE MM TRACTOR. With years of experience back of us in building cabs for industrial tractors, it is only reasonable that our cab-tractor for farm use would be outstanding — in fact REVOLUTIONARY. For three years we have been perfecting this model both from the standpoint of modern comforts and field utility. In the Mohave Desert and under other adverse farming conditions, it has been tested and proved until we can truthfully say, and not without a feeling of pride, HERE IS THE WORLD'S GREATEST TRACTOR.

SPEEDS AND POWER FOR EVERY NEED

You can buy this new MM TRACTOR, with or without cab. If bought without a cab it can easily be installed later.

This tractor offers 3-4 plow-power on drawbar belt and Power-Take-Off. There are 5 Speeds Forward to give you the right speed and power for every need. You can go from a crawl to 40 M.P.H.



LOOKING AHEAD — Not c
the entire farm machinery fi
its QUALITY PRODUCTS —
pioneer spirit in the introdu
models. An engineering forc
farsighted, keeps its efforts fo
—to evolve more and more of 1
farmer can reach his rightful ph

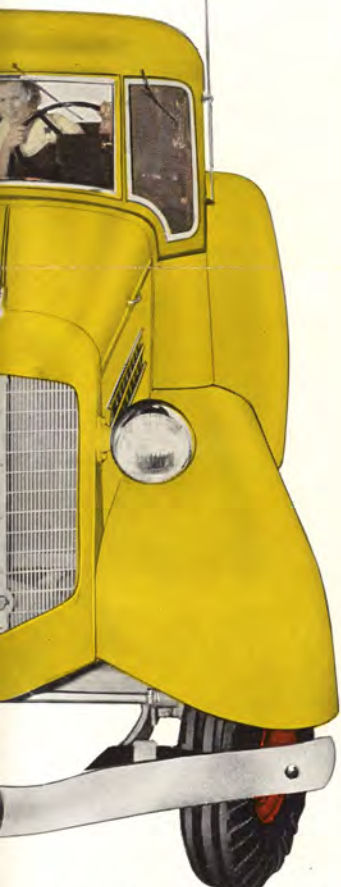
MINNEAPO
POWER IMPL

MINNEAPOLIS, MINN. HOPKINS, MINN. FARG•

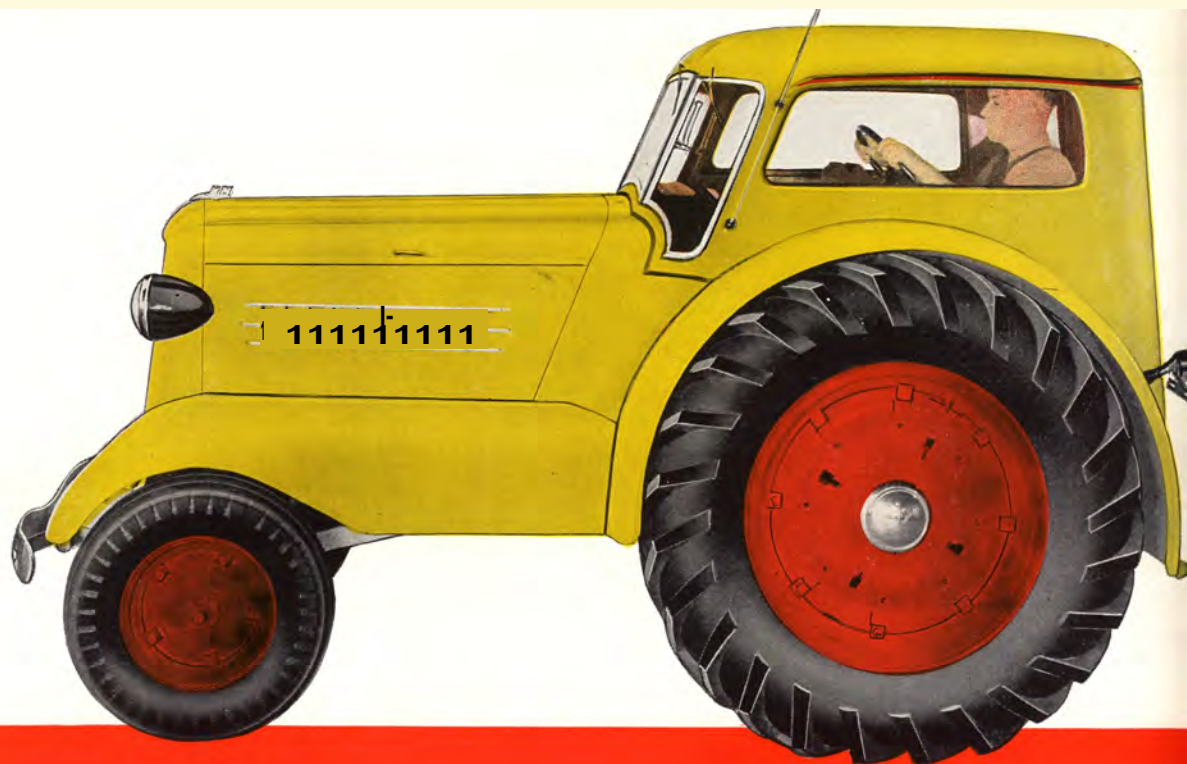
ERN
TOR

DE LUXE
TRACTOR

SPEEDS .
TO FORTY
HOUR



y in the field of tractors but in
Minneapolis-Moline — with
as steadily demonstrated its
on of original and improved
which is practical-minded but
Used on one supreme purpose
crop equipment by which the
of importance in American life.



IT'S A POWERFUL, PROVEN AND PRACTICAL FARM TRACTOR

In the new Special DE LUXE MODEL MM TRACTOR, power and utility have in no way been subordinated to modern conveniences. This most advanced of tractors bids fair to set new records for its type and size, both in power and economy on belt and power-take-off as well as on the drawbar in the fields and on the highways.

High compression for using regular "leaded" gasoline is standard equipment for this 3-4 plow tractor. Several years ago Minneapolis-Moline produced the first high compression tractor, and in the spring of 1935 was first to sell high compression tractors to farmers. Today 80% of all MM models sold to farmers are high compressioned.

As you can see this tractor fits many other needs besides those of the farmer for field, belt and road use. For many industrial and other special jobs this MM TRACTOR will no doubt prove a favorite.

THE POWERFUL HIGH COMPRESSION MM ENGINE

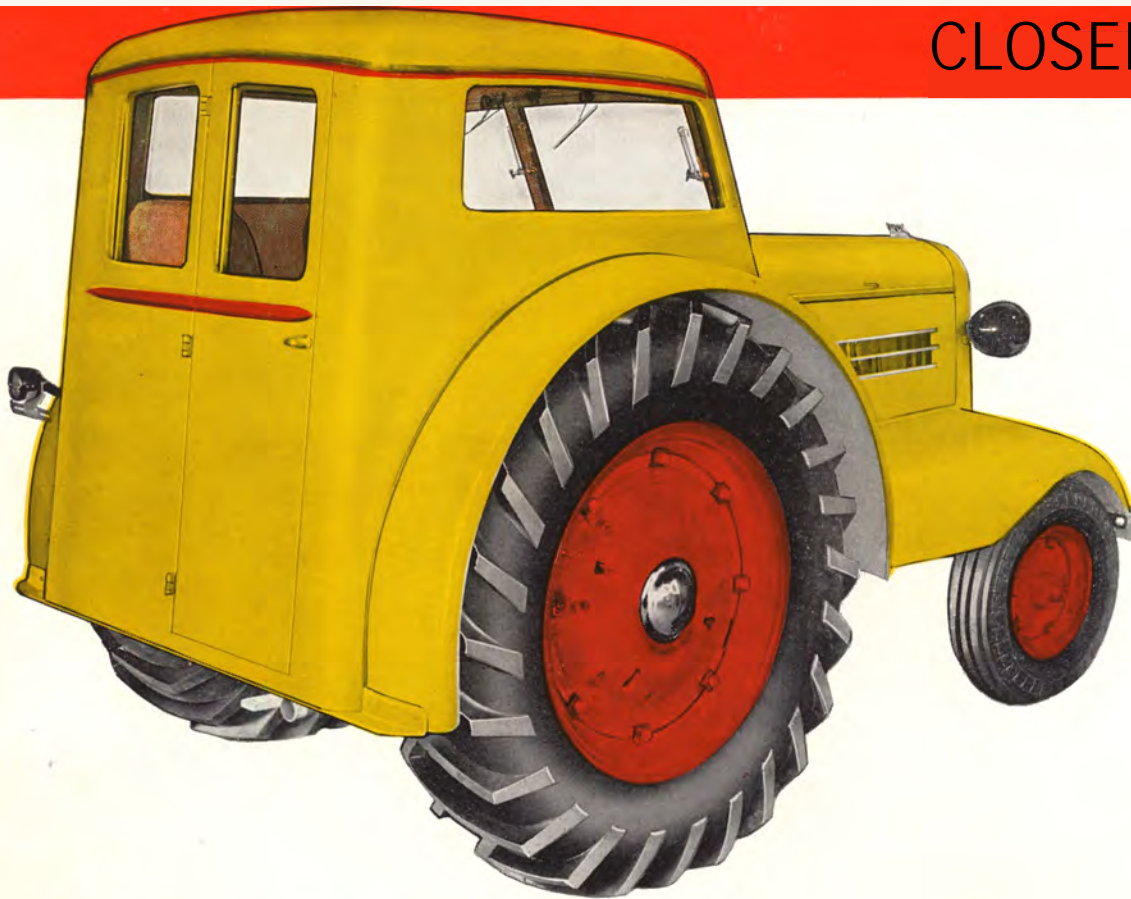
There is really something under the hood of this tractor. This engine is the successor to the high compression engine that a few years ago, in the KTA tractor, helped set a new power and fuel economy record for tractors of its size and type — **that record still stands.** We consider this new engine to be even more efficient. The test will tell.



is MINNAPOLIS-MOLINE
TRACTOR COMPANY

NO. DAK. KANSAS CITY, KAN. MEMPHIS, TENN.

CLOSED CAR CABBOS



It is easy to get in or out of the MM "Comfortactor"

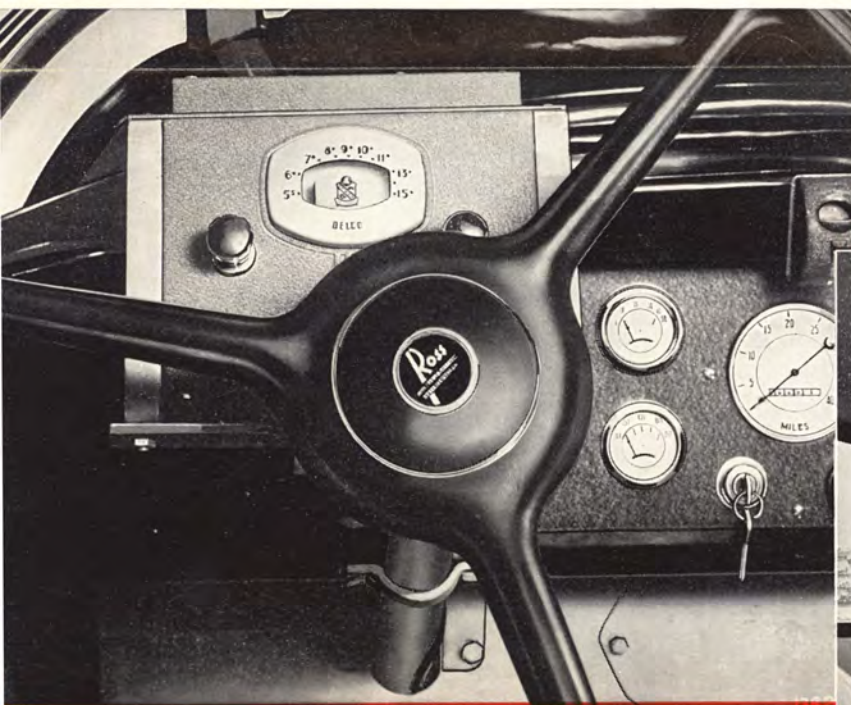
And when the farmer is inside the cab operating the tractor, he is as comfortable as he would be in a modern automobile.

Invades the Tractor Field

RIDING in superb comfort on cushioned seat for two, the farmer can now direct his special MM Tractor with the same ease as a modern automobile. Fully protected from dust and the elements, and fortified with Safety Glass, he has at his command FIVE SPEEDS FORWARD from a crawl to 40 M.P.H. Gear can be shifted "on the go."

The variable speed governor controlled by a pedal, like a foot pedal—Big Bendix "self-energizing" brakes and smooth-action clutch are foot-operated. A self-starter and powerful electric headlights, windshield wipers and an electric horn, respond to the farmer's touch. Speedometer, ammeter, oil pressure gauge, and water temperature gauge are directly before him. Further features include rear view mirror with clock, gasoline gauge, stoplight, heavy duty bumper, fenders—front and rear, rubber floor mat, sun visor, knickknack compartment. Countless items facilitate ease of operation, while such luxuries as radio, cigar lighter, ash tray, give a pleasant accent to the comfort side.

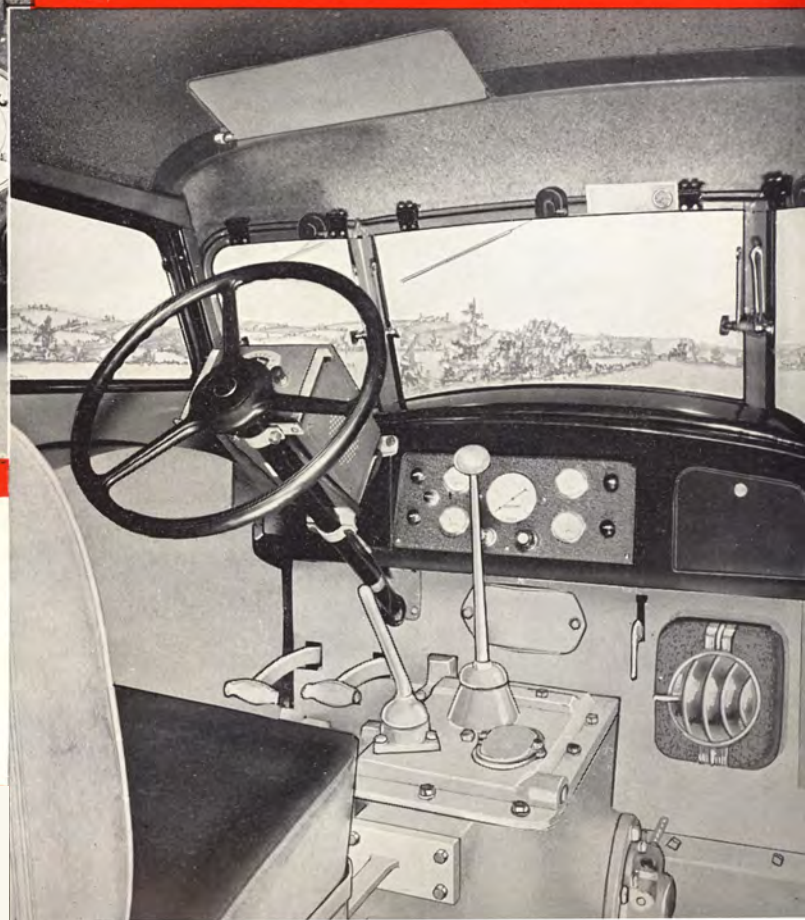
It's built for SAFETY, too. The cab is built of all-steel with safety glass throughout for good vision front, rear and both sides. Practically every comfort feature is a safety factor, too.



Make it a point to see one of these modern MM TRACTORS, and you can see for yourself why *Minneapolis-Moline* is known as the pioneer of modern tractor design. Notice the good vision and handy controls for the operator.

10M-5-25-39
PRINTED IN U.S.A.

86092-H
2446k,'2



MINNEAPOLIS - MOLINE
FARM IMPLEMENT COMPANY