

2016

Corrigendum: The *Arabidopsis* Homologs of Trithorax (ATX1) and Enhancer of Zeste (CLF) Establish 'Bivalent Chromatin Marks' at the Silent *AGAMOUS* Locus

Abdelaty Saleh

School of Biological Sciences, University of Nebraska–Lincoln

Ayed Al-Abdallat

School of Biological Sciences, University of Nebraska–Lincoln and University of Jordan, a.alabdallat@ju.edu.jo

Ivan Ndamukong

School of Biological Sciences, University of Nebraska–Lincoln

Raul Alvarez-Venegas

Centro de Investigacion y de Estudios Avanzados, Unidad Irapuato, Mexico, raul.alvarez@cinvestav.mx

Zoya Avramova

School of Biological Sciences, University of Nebraska–Lincoln, zavramova2@unl.edu

Follow this and additional works at: <http://digitalcommons.unl.edu/bioscifacpub>



Part of the [Biology Commons](#), and the [Genetics Commons](#)

Saleh, Abdelaty; Al-Abdallat, Ayed; Ndamukong, Ivan; Alvarez-Venegas, Raul; and Avramova, Zoya, "Corrigendum: The *Arabidopsis* Homologs of Trithorax (ATX1) and Enhancer of Zeste (CLF) Establish 'Bivalent Chromatin Marks' at the Silent *AGAMOUS* Locus" (2016). *Faculty Publications in the Biological Sciences*. 501.

<http://digitalcommons.unl.edu/bioscifacpub/501>

This Article is brought to you for free and open access by the Papers in the Biological Sciences at DigitalCommons@University of Nebraska - Lincoln. It has been accepted for inclusion in Faculty Publications in the Biological Sciences by an authorized administrator of DigitalCommons@University of Nebraska - Lincoln.

Corrigendum

The *Arabidopsis* homologs of trithorax (ATX1) and enhancer of zeste (CLF) establish ‘bivalent chromatin marks’ at the silent *AGAMOUS* locus

Abdelaty Saleh¹, Ayed Al-Abdallat^{1,2}, Ivan Ndamukong¹, Raul Alvarez-Venegas^{1,3} and Zoya Avramova^{1,*}

¹School of Biological Sciences, UNL, Lincoln, NE 68588, USA, ²Faculty of Agriculture, University of Jordan, Amman 11942, Jordan and ³Department of Genetic Engineering, Centro de Investigacion y de Estudios Avanzados-Unidad Irapuato, México

Nucl. Acids Res. (2007) 35 (18):6290–6296. doi: 10.1093/nar/gkm464

The authors wish to draw the attention to two irregularities in Figures 2a and 4. Both concern errors in duplicating images of ‘empty’ lanes illustrating absence of DNA bands.

We wish to introduce the following corrections to Figure 2a and its legend, underlined text:

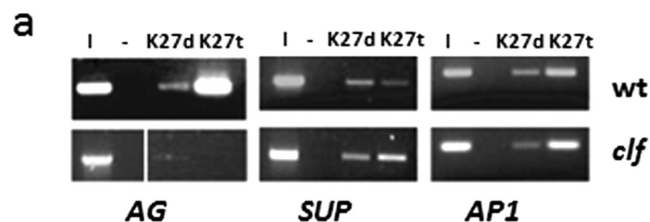


Figure 2. H3K27me2 and H3K27me3 profiles of three *Arabidopsis* genes. (a) ChIP assays with antibodies specific against di- and tri-methylated H3K27; superscripts ‘t’ and ‘d’ stand for the tri-, or di-methylated isoforms, respectively. The H3K27me2 and H3K27me3 levels for AG in *clf* are from the 5′-end of AG, shown in Figure 3a, below. White line on AG panel indicates the two lanes were not adjacent to the input lane. (I)-input sample is 15% of the immunoprecipitated DNA; (-) is negative control without antibody. Quantified bands from three independently performed ChIP assays are shown as graphs. Changes in H3K27me3 levels of wild type and *clf* *SUP* and *AP1* nucleosomes are insignificant ($P > 0.5$).

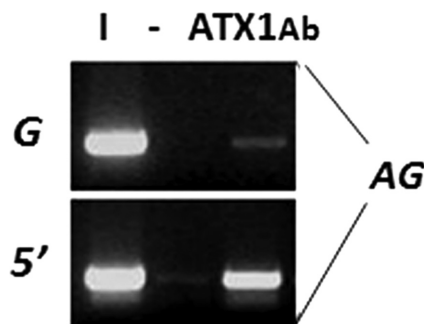


Figure 4. ChIP assays with anti-ATX1 antibodies. Bands corresponding to the 5′-end *AG*-region amplified after a ChIP with anti-ATX1 antibodies; downstream region nucleosomes were only weakly represented in the precipitated fraction.

*To whom Correspondence should be addressed. Tel: +402 472 3993; Fax: +402 472 2083; Email: zavramova2@unl.edu

The lower panel of Figure 4 was mistakenly duplicated from Figure 3a, lower left panel. The original gels are no longer available, we therefore wish to remove this panel from the figure and the sentence related to it from the Legend. A correction is required in the following sentence on page 6294, underlined text: “ChIP analysis with antiATX1 antibodies did not reveal presence of ATX1 at *API*nucleosomes (not shown)”.

We regret these omissions and apologize to the readers for the inconvenience caused. The results and conclusions remain valid.