

1986

EC86-1538 Principal Stored Grain Insects

Follow this and additional works at: <http://digitalcommons.unl.edu/extensionhist>



Part of the [Agriculture Commons](#), and the [Curriculum and Instruction Commons](#)

"EC86-1538 Principal Stored Grain Insects" (1986). *Historical Materials from University of Nebraska-Lincoln Extension*. 1938.
<http://digitalcommons.unl.edu/extensionhist/1938>

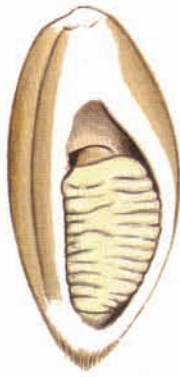
This Article is brought to you for free and open access by the Extension at DigitalCommons@University of Nebraska - Lincoln. It has been accepted for inclusion in Historical Materials from University of Nebraska-Lincoln Extension by an authorized administrator of DigitalCommons@University of Nebraska - Lincoln.

PRINCIPAL STORED GRAIN INSECTS

For safe and effective use of insecticides, always identify the problem correctly.



1. Granary weevil



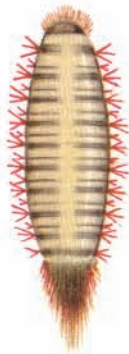
2. Saw-toothed grain beetle



3. Red flour beetle



4. Larger cabinet beetle



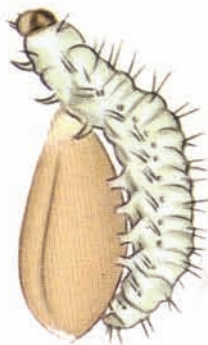
5. Lesser grain borer



6. Rice weevil



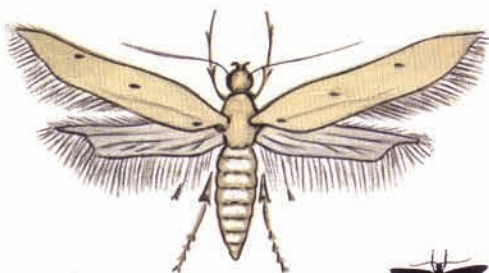
7. Indian-meal moth



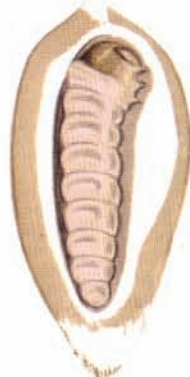
8. Cadelle



9. Flat grain beetle



10. Angoumois grain moth



Some of these stored grain insects are also **KITCHEN PESTS.**

The saw-toothed grain beetle, red flour beetle, larger cabinet beetle, and Indian-meal moth develop in flour, cake mixes, corn meal, breakfast foods and similar products. The Angoumois grain moth infests popcorn.