

University of Nebraska - Lincoln

DigitalCommons@University of Nebraska - Lincoln

Nebraska Tractor Tests

Tractor Test and Power Museum, The Lester F.
Larsen

10-31-1985

Test 1584: Case International 3594 Powershift Diesel 12 and 24-Speeds

Nebraska Tractor Test Lab

University of Nebraska-Lincoln, tractortestlab@unl.edu

Follow this and additional works at: <https://digitalcommons.unl.edu/tractormuseumlit>



Part of the [Energy Systems Commons](#), [History of Science, Technology, and Medicine Commons](#), [Other Mechanical Engineering Commons](#), [Physical Sciences and Mathematics Commons](#), [Science and Mathematics Education Commons](#), and the [United States History Commons](#)

Nebraska Tractor Test Lab, "Test 1584: Case International 3594 Powershift Diesel 12 and 24-Speeds" (1985). *Nebraska Tractor Tests*. 1895.

<https://digitalcommons.unl.edu/tractormuseumlit/1895>

This Article is brought to you for free and open access by the Tractor Test and Power Museum, The Lester F. Larsen at DigitalCommons@University of Nebraska - Lincoln. It has been accepted for inclusion in Nebraska Tractor Tests by an authorized administrator of DigitalCommons@University of Nebraska - Lincoln.

NEBRASKA TRACTOR TEST 1584

CASE INTERNATIONAL 3594 POWERSHIFT DIESEL

24 SPEED ALSO 12 SPEED

Department of Agricultural Engineering

Dates of Test: October 16 to 31, 1985

Manufacturer: J.I. CASE COMPANY, 700 State Street, Racine, Wisconsin 53404

POWER TAKE-OFF PERFORMANCE

Power Hp (kW)	Crank shaft speed rpm	Fuel Consumption			Temperature °F (°C)			Barometer inch Hg (kPa)
		gal/hr (l/h)	lb/hp.hr (kg/kW.h)	Hp.hr/gal (kW.h/l)	Cooling medium	Air wet bulb	Air dry bulb	
MAXIMUM POWER AND FUEL CONSUMPTION								
Rated Engine Speed — Two hours (PTO Speed — 1002 rpm)								
182.27 (135.92)	2100	11.800 (44.667)	0.454 (0.276)	15.45 (3.043)	196 (90.8)	60 (15.4)	75 (24.1)	28.75 (97.07)
VARYING POWER AND FUEL CONSUMPTION — Two Hours								
160.42 (119.62)	2174	10.602 (40.132)	0.463 (0.282)	15.13 (2.981)	187 (86.1)	57 (13.9)	75 (23.6)
0.00 (0.00)	2294	2.982 (11.288)	176 (80.0)	56 (13.3)	71 (21.7)
83.01 (61.90)	2254	6.572 (24.876)	0.555 (0.338)	12.63 (2.488)	180 (81.9)	57 (13.6)	79 (25.8)
182.79 (136.31)	2100	11.808 (44.699)	0.453 (0.276)	15.48 (3.049)	191 (88.1)	56 (13.3)	76 (24.4)
41.86 (31.22)	2272	4.728 (17.896)	0.792 (0.482)	8.86 (1.744)	183 (83.6)	55 (12.8)	75 (23.9)
122.86 (91.61)	2221	8.595 (32.537)	0.491 (0.298)	14.29 (2.816)	183 (83.9)	55 (12.8)	76 (24.2)
Av Av	98.49 73.45	7.548 (28.571)	0.537 (0.327)	13.05 (2.571)	183 (83.9)	56 (13.3)	75 (23.9)	28.73 (97.02)

DRAWBAR PERFORMANCE

Power Hp (kW)	Drawbar pull lbs (kN)	Speed mph (km/h)	Crank- shaft speed rpm	Slip %	Fuel Consumption			Temp. °F (°C)			Barom. inch Hg (kPa)
					gal/hr (l/h)	lb/hp.hr (kg/kW.h)	Hp.hr/gal (kW.h/l)	Cool- ing med	Air wet bulb	Air dry bulb	
Maximum Available Power — Two Hours 16th (3-4) Gear											
160.39 (119.60)	8668 (38.55)	6.94 (11.17)	2100	2.19	11.708 (44.321)	0.512 (0.311)	13.70 (2.699)	190 (87.5)	53 (11.7)	61 (16.1)	29.05 (98.08)
75% of Pull at Maximum Power — Ten Hours 16th (3-4) Gear											
129.20 (96.35)	6621 (29.45)	7.32 (11.78)	2202	1.74	10.010 (37.892)	0.543 (0.330)	12.91 (2.543)	187 (85.9)	50 (10.0)	62 (16.4)	29.06 (98.14)
50% of Pull at Maximum Power — Two Hours 16th (3-4) Gear											
88.30 (65.84)	4414 (19.63)	7.50 (12.07)	2248	1.31	7.886 (29.854)	0.626 (0.381)	11.20 (2.206)	184 (84.4)	47 (8.3)	52 (11.1)	29.06 (98.11)
50% of Pull at Reduced Engine Speed — Two Hours 18th (3-6) Gear											
88.42 (65.93)	4413 (19.63)	7.51 (12.09)	1800	1.26	6.767 (25.616)	0.537 (0.326)	13.07 (2.574)	184 (84.4)	51 (10.6)	60 (15.3)	29.05 (98.08)

FUEL, OIL AND TIME: Fuel No. 2 Diesel Cetane No. 46.9 (rating taken from oil company's inspection data) Specific gravity converted to 60/60°F (15/15°C) 0.8421 Fuel weight 7.012 lbs/gal (0.840 kg/l) Oil Case Enginegard SAE 30 API service classification CD/SF To motor 5.204 gal (19.698 l) Drained from motor 4.873 gal (18.447 l) Transmission and hydraulic lubricant Case Powergard PTF transmission fluid Front axle lubricant Case Loadgard-GL5 85W140EP gear lubricant Total time engine was operated 43.5 hours.

ENGINE: Make Case Diesel Type six cylinder vertical with turbocharger Serial No. *10365398* Crankshaft lengthwise Rated rpm 2100 Bore and stroke 4.625" × 5.00" (117.5 mm × 127 mm) Compression ratio 15.8 to 1 Displacement 504 cu in (8259 ml) Starting system 12 volt Lubrication pressure Air cleaner two paper elements and aspirator Oil filter two full flow cartridges Oil cooler engine coolant heat exchanger for crankcase oil, radiator for hydraulic and transmission oil Fuel filter two paper cartridges and prestrainer Muffler vertical Cooling medium temperature control two thermostats.

CHASSIS: Type all wheel drive with rear duals and constant mesh front axle Serial No. *9939036* Tread width rear 64" (1626 mm) to 134" (3404 mm) front 60" (1524 mm) to 89" (2261 mm) Wheel base 116" (2946 mm) Center of gravity (without operator or ballast, with minimum tread, with fuel tank filled and tractor serviced for operation) Horizontal distance forward from center-line of rear wheels 34.0" (864 mm) Vertical distance above roadway 38.0" (965 mm) Horizontal distance from center of rear wheel tread 0" (0 mm) to the right/left Hydraulic control system direct engine drive Transmission selective gear fixed ratio with partial (6) range operator controlled powershift Advertised speeds mph (km/h) first 1.9 (3.0) second 2.1 (3.4) third 2.5 (4.0) fourth 2.9 (4.6) fifth 3.1 (5.0) sixth 3.2 (5.2) seventh 3.6 (5.8) eighth 3.7 (6.0) ninth 4.3 (6.9) tenth 4.4 (7.0) eleventh 4.9 (7.9) twelfth 5.0 (8.1) thirteenth 5.4 (8.6) fourteenth 5.8 (9.4) fifteenth 6.2 (9.9) sixteenth 6.7 (10.8) seventeenth 7.3 (11.7) eighteenth 8.4 (13.5) nineteenth 10.4 (16.7) twentieth 11.9 (19.1) twenty-first 13.8 (22.2) twenty-second 15.9 (25.5) twenty-third 17.2 (27.7) twenty-fourth 20.8 (33.5) reverse 3.1 (5.0), 5.4 (8.6), 7.3 (11.7) Clutch wet multiple disc

MAXIMUM POWER IN SELECTED GEARS

145.08 (108.19)	20384 (90.67)	2.67 (4.30)	2153	14.12	4th (1-4) Gear	184 (84.2)	37 (2.8)	40 (4.4)	29.08 (98.20)
155.27 (115.79)	19944 (88.71)	2.92 (4.70)	2099	11.11	5th (1-5) Gear	185 (85.0)	43 (6.1)	46 (7.8)	29.02 (98.00)
160.80 (119.91)	19280 (85.76)	3.13 (5.03)	2101	8.28	6th (2-1) Gear	186 (85.3)	44 (6.7)	48 (8.9)	29.05 (98.10)
162.18 (120.94)	16964 (75.46)	3.59 (5.77)	2102	5.50	7th (1-6) Gear	189 (87.2)	54 (12.2)	75 (23.9)	29.08 (98.20)
163.28 (121.76)	16463 (73.23)	3.72 (5.99)	2099	5.33	8th (2-2) Gear	189 (87.2)	54 (12.2)	74 (23.3)	29.08 (98.20)
163.33 (121.79)	14044 (62.47)	4.36 (7.02)	2100	4.08	9th (2-3) Gear	191 (88.3)	55 (12.8)	73 (22.8)	29.07 (98.17)
164.37 (122.57)	13890 (61.78)	4.44 (7.14)	2100	3.92	10th (3-1) Gear	191 (88.1)	56 (13.3)	72 (22.2)	29.07 (98.17)
165.12 (123.13)	12220 (54.36)	5.07 (8.15)	2100	3.32	11th (2-4) Gear	190 (87.5)	56 (13.3)	72 (22.2)	29.07 (98.17)
164.99 (123.03)	12008 (53.41)	5.15 (8.29)	2099	3.23	12th (3-2) Gear	190 (87.8)	56 (13.3)	72 (22.2)	29.07 (98.17)
164.29 (122.51)	11190 (49.78)	5.51 (8.86)	2098	2.89	13th (2-5) Gear	190 (87.8)	55 (12.8)	72 (22.2)	29.07 (98.17)
163.41 (121.85)	10223 (45.47)	5.99 (9.65)	2100	2.63	14th (3-3) Gear	192 (88.6)	55 (12.8)	72 (22.2)	29.07 (98.17)
163.44 (121.88)	9592 (42.67)	6.39 (10.28)	2101	2.37	15th (2-6) Gear	191 (88.3)	55 (12.8)	72 (22.2)	29.08 (98.20)
163.52 (121.94)	8828 (39.27)	6.95 (11.18)	2100	2.19	16th (3-4) Gear	192 (88.6)	56 (13.3)	72 (22.2)	29.09 (98.23)
161.82 (120.67)	8045 (35.78)	7.54 (12.14)	2100	2.11	17th (3-5) Gear	191 (88.3)	56 (13.3)	72 (22.2)	29.09 (98.23)
159.35 (118.83)	6852 (30.48)	8.72 (14.04)	2099	1.58	18th (3-6) Gear	191 (88.3)	55 (12.8)	72 (22.2)	29.08 (98.20)

LUGGING ABILITY IN 16th (3-4) GEAR

Crankshaft Speed rpm	2100	1892	1672	1474	1257	1059
Pull—lbs (kN)	8828 (39.27)	9793 (43.56)	10432 (46.40)	10630 (47.28)	10235 (45.53)	9210 (40.97)
Increase in Pull %	0	11	18	20	16	4
Power—Hp (kW)	163.52 (121.94)	162.93 (121.50)	153.05 (114.13)	137.45 (102.49)	112.96 (84.23)	85.84 (64.01)
Speed—Mph (km/h)	6.95 (11.18)	6.24 (10.04)	5.50 (8.85)	4.85 (7.80)	4.14 (6.66)	3.49 (5.62)
Slip %	2.19	2.54	2.54	2.89	2.72	2.54

TRACTOR SOUND LEVEL WITH CAB

	dB(A)
Maximum Available Power—Two Hours	77.0
75% of Pull at Maximum Power—Ten Hours	76.0
50% of Pull at Maximum Power—Two Hours	76.5
50% of Pull at Reduced Engine Speed—Two Hours	74.5
Bystander in 23rd (4-5) gear	88.5

TIRES, BALLAST AND WEIGHT

	With Ballast	Without Ballast
Rear Tires	Four 20.8R38; 8; inner 16 (110) outer 12 (85)	Four 20.8R38; 8; inner 16 (110) outer 12 (85)
Ballast	None	None
—Liquid (each)	8 lb (3 kg)	None
—Test equip. (each)	None	None
Front Tires	Two 16.9-28; 10; 28 (195)	Two 16.9-28; 10; 28 (195)
Ballast	None	None
—Liquid (each)	688 lb (312 kg)	None
—Cast Iron (each)	752 lb (341 kg)	None
Height of Drawbar	23 in (585 mm)	23 in (585 mm)
Static Weight with Operator —Rear	12520 lb (5679 kg)	12490 lb (5666 kg)
—Front	7980 lb (3620 kg)	5100 lb (2313 kg)
—Total	20500 lb (9299 kg)	17590 lb (7979 kg)

hydraulically power actuated by foot pedal **Brakes** wet multiple disc hydraulically power actuated by two foot pedals which can be locked together **Steering hydrostatic Turning radius** (on concrete surface with brake applied) right 173" (4.39 m) left 173" (4.39 m)(on concrete surface without brake) right 233" (5.92 m) left 233" (5.92 m) **Turning space diameter** (on concrete surface with brake applied) right 364" (9.25 m) left 364" (9.25 m)(on concrete surface without brake) right 486" (12.34 m) left 486" (12.34 m) **Power take-off** 1002 rpm at 2100 engine rpm **Unladen tractor mass** 15620 lb (7085 kg).

REPAIRS AND ADJUSTMENTS: During preliminary PTO test, the PTO control cable broke. The cable was replaced at end of tests.

REMARKS: All test results were determined from observed data obtained in accordance with SAE and ASAE test codes and the technically equivalent ISO test codes or official Nebraska test procedure. For the maximum power tests, the fuel temperature at the injection pump was maintained at 162°F (72.2°C). Fifteen gears were chosen between 15% slip and 10 mph (16.1 km/h).

We, the undersigned, certify that this is a true and correct report of official Tractor Test No. 1584, December 3, 1985.

LOUIS I. LEVITIGUS

Engineer-in-Charge

K. VON BARGEN

W. E. SPLINTER

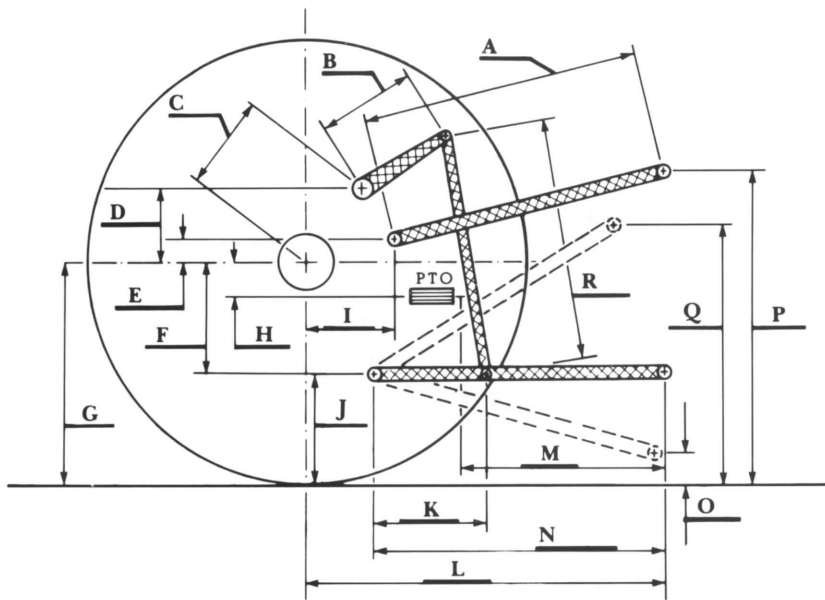
L. L. BASHFORD

Board of Tractor Test Engineers

THREE POINT HITCH PERFORMANCE

Observed Maximum Pressure psi (kPa)	2250 (15510)	
Location	remote outlet	
Hydraulic oil temperature °F (°C)	157 (69)	
Location	transmission drain plug	
	Maximum Lift Capacity	Lift Capacity for Transport
QUICK ATTACH	yes	
CATEGORY	III	*not measured
LOAD lbs (kg)	7758 (3519)	
TIME sec	1.93	
HITCH POINT MOVEMENT in (mm)		
Lowest position	9.9 (251)	
Top of timed range	35.9 (912)	
Highest position	40.2 (1021)	
LOAD CG MOVEMENT in (mm)		
Lowest position	10.0 (254)	
Top of timed range	39.3 (998)	
Highest position	46.0 (1168)	

*Implement load capacity for transport purposes not specified by manufacturer.



	inch	mm
A	23.5	597
B	11.4	289
C	11.5	293
D	1.9	48
E	7.7	196
F	12.7	322
G	33.9	862
H	6.0	152
I	21.9	557
J	21.3	540
K	17.4	441
L	45.8	1163
L'	49.8	1265
M	21.1	536
N	35.4	899
O	8.0	203
P	43.4	1101
Q	40.6	1032
R	21.9	556

L' to end of quick attach

Hitch Dimensions as Tested — No Load



Case International 3594 Diesel