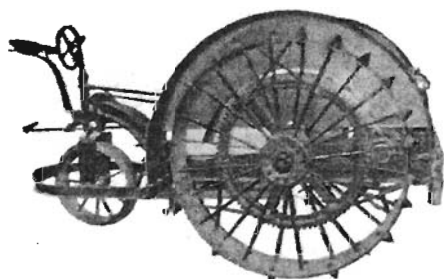


Friends of the Lester F. Larsen Tractor Test and Power Museum Museum



Judy L. Ray – Editor Newsletter #21 April 2005

To collect, preserve, research, and interpret the traditions and technologies of agriculture.

BSE Open House Held

The first annual Biological Systems Engineering Open House was held on February 26th. Bill Splinter, director of the Larsen Tractor Museum designated this day of festivities for the Staff, Students and Faculty of the BSE Department.

We here at the museum often note how supportive and helpful the folks at Chase Hall, the headquarters of the BSE Department, are. The open house also commemorated the completion of 100 years of Agricultural Engineering here on the UNL Campus. Visitors were able to view items from the archives of the museum such as the lab coat Lester Larsen wore during his many years as the head engineer at the Test Lab. Thank you to Dave Morgan, assistant director of the Tractor Test Lab who supervised tours of the Test Lab during the open house. It was fun to discuss with department visitors how important the history of agricultural technology is. A number of staff, faculty and students from the department came to visit as well as interested folks who just happened to stop by. A big "thank you" to the faculty, staff, and students who came by to visit us on the special day. Thanks to Betty Splinter for the fantastic fruit punch and cookies. Our devoted volunteers Larry Ehlers and Jerry Kohl gave up their entire Saturday to give tours and chat with the visitors. As always we appreciate their support immensely!

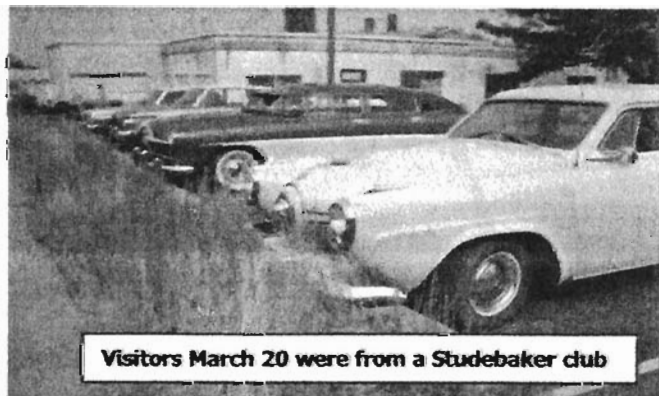
Board Meeting

April 19, 2005 1:30 p.m.

This meeting will be held at East Campus Student Union UNL. Room will be posted.

President of Friends Board Attends Meeting

Don Edwards attended the Friends of the University of Nebraska State Museum Board Of Directors Meeting on Monday March 21. Marj McKinty, president of the State Museum Board, invited Don to the meeting. Marj attended the Tractor Friends meeting held in January. Don discussed the importance of promoting our museums and how useful and important networking between museums can be. Don also displayed the new 2005 Show Guide which features a half page advertisement about the Larsen Museum. A moment of laughter was had by all when Don displayed an advertisement he found in the recent edition of Antique Power magazine. The ad displays a picture of a lavender tractor and is advertised as a girl tractor all decked out in lavender and lace. Don also brought along a couple of tractor calendars and the group pulled numbers out of a hat to win the prizes. Don and Marj are dedicated to keeping the lines of communication between both friends groups wide open. It is quite evident that the Friends of the University of Nebraska State Museum are a very strong and active group and we hope to work with them in the future.



Visitors March 20 were from a Studebaker club

Lester F. Larsen
Tractor Test & Power Museum
UNL East Campus, 35th & Fair St.
P.O. Box 830833
Lincoln, NE 68583-0833

Phone (402)472-8389
FAX (402)472-8367
E-Mail tractormuseum2@unl.edu

Officers:

President: Don Edwards
V. President: Russ Tooker (David City)
Secretary: Harold Borman
Treasurer: Bob Kleis

Board of Directors:

Past Pres.: Charles Borcharding
Vern Anderson
Larry Ehlers
Earl Ellington
Charles Fenster (Gering)
Richard Goodding
Lawrence Hermann
Jerry Kohl
Dave Morgan
Bill Overturf (Oak)
Ervin Rolofson
John Smith
Glen Vollman
Ron Yoder

Ex-Officio:

Louis Leviticus
Susan Norby
William Splinter

MUSEUM HOURS

MON-FRI 9AM-4 PM
SATURDAY 10AM-2 PM
SUNDAY NOON-4 PM
CLOSED NOON HOUR



Message From the Director - W.E. Splinter



1910 International Auto Wagon

We have recently received two significant new donations for our tractor exhibit. The first is a 1935 John Deere "B" that has a brass name plate, indicating that it is among the first year's production run. It has been nicely restored and was donated by Don and Anne Eppley of Omaha. This complements our tractor collection very nicely as we like to show the earliest models demonstrating step changes in tractor technology. The John Deere "B", together with the "A" are the first row crop John Deere tractors following the John Deere "D" which in turn followed the Waterloo Boy. All are in our collection. It is nice to be able to show this sequence.

The second donation consists of a 1910 International Harvester "Auto Wagon", a motorized wagon mounting a two cylinder horizontally opposed, air cooled engine beneath the driver's seat. The driver sits on the right hand side. There are two speeds forward and one reverse. Extra passengers can sit on a board in the wagon box. This vehicle was beautifully restored by Elton Lyles and Don Graves, also of Omaha. We do not have all of the history of this machine yet, but it may have originally come from Gothenburg. We certainly appreciate these historic additions to our Larsen Museum collection and we invite everyone to come and see them.

Research Notes and Other Items from Lou's Desk

As you know, my efforts for the past year have been in cataloging and describing all the items in our collection. I have been greatly helped by the initial work done by Luis Vasquez, who did an absolutely magnificent job of recording and describing the items. His folders are a joy to look at from an artistic point of view and I urge you to ask to see them when you are at the museum.

However, he, unfortunately, was unable to record everything before he left. As I reported at the Friend's meetings, I have made good headway and discovered many interesting histories. This doesn't mean that I am finished—there are always new pieces of information and corrections on the items which have to be entered into the database.

I have some tools I am not sure of which I am showing in the reproduction on the left. I have received some ideas from people, but nothing was really "for sure". I would prefer to be able to register them in our list of items with, at least a "best guess" Anyone who has any info on what they are called and for what they were used or knows of a reference please contact me at the museum (402-472-8389 or email lleviticus1@unl.edu). Or, even better, come and see us.

- Lou Leviticus

Spotlight on the Friends Board

Featuring Larry Ehlers

Larry was born in 1933 at Junction City, Kansas. His great-grandparents came from Germany to homestead in 1854 in Missouri. Larry's grandmother came to Kansas in a Covered Wagon. Larry's grandparents bought a farm in 1913 near Junction City, Kansas. His brother Carl still lives there. In 1936 Larry's dad bought his first tractor. It was a Farmall



Regular. Like most folks Larry's interest in tractors comes from growing up with them. He recalls long hard days helping his dad harvest while his mom would be hard at work in the kitchen to bring food out to them in the field. "She would bring us a full meal with pie and everything, sometime twice a day!"

Larry thought about studying to become an architect but changed his mind when he found he didn't have the patience for drawing. He changed to engineering because he could do the math without any trouble. Larry began his teaching career in 1957. He started at Kansas State. He also taught at Oklahoma State. In 1965 he started teaching at the University in Omaha.

Larry met his wife Judy in High School. They started dating when she returned to Junction City and started working at the hospital. They have two children Pam and Doug. Their first and only grandchild is Julia Kay. They are awaiting the April arrival of a grandson who will be named Jack Edward.

Larry transferred from UNO and became a faculty member at UNL. He and Bill Splinter, director of the Larsen Museum, became friends when they were both department heads and they attended boring Dean's meetings together where they discussed their shared passion-- TRACTORS.

In his spare time Larry likes to refinish furniture and attend life-long learning classes. He is an avid sports fan and enjoys Kansas State Wildcats football and the New York Yankees baseball.

When I asked Larry about his teaching philosophy, it is assigning lots of homework, always answering questions about the problems and being available in his office. "I always tried to impress on the students they have to be correct 95% of the time when they go to work." He also enjoys students who are willing to work. "An engineering student can not avoid a life-long love of learning."

Larry feels that the most important aspect of being on the Larsen Museum Friend's Board is to be involved! The best way to do this, Larry adds, is by offering ideas to promote the museum, volunteer your time at the museum and last but not least investigate ways to keep the museum running through varied funding sources. Larry is always willing to fill in when staff cannot be at the museum and to research the historical aspects of the tractors so that we have clear, concise and interesting information for the patrons to read. Larry is a great asset to the museum and we are very glad he shares his busy schedule with us!

- Donna Martin

Dear Friends, Farmers and Countrymen,

Here is an odd one I dug up on the Internet. I have no idea how they aimed it. It probably made enough noise to scare away some. Others, possible marauders, may have been incapacitated from laughter. At least the farmer felt secure! - Lou Leviticus

Plow and gun



In 1862, during the American Civil War period (1861-1865), W.H. Fancher and C.M. French of Waterloo, N.Y. received a U.S. patent for a combined plow and gun (No. 35,600). To the metal plow with wooden handles of ordinary construction, the inventors added the elements of light ordinance, designed for "especially when used in border localities, subject to savage feuds and guerrilla warfare." The share serves as an anchor in the ground to resist recoil, the wooden handles being used to set direction. Projectiles could be grape shot or balls of one to three pounds weight. The combination was proposed to give those in agricultural pursuits to have at hand an "efficient weapon of defense at very slight expense in addition" to that of a plow.

LARSEN TRACTOR TEST AND POWER MUSEUM

8TH ANNUAL OPEN HOUSE
SATURDAY MAY 7
10-3



TRACTOR DEMONSTRATIONS - 1:30
ICE CREAM SOCIAL - 2:30

Friends of the Lester F. Larsen
Tractor Test and Power Museum
P.O. Box 830833
Lincoln, NE 68583-0833

ADDRESS CORRECTION REQUESTED

Robert Kleis
6325 "O" St., #602
Lincoln, NE 68510

Archive Dedication Slated For May 7th Open House

There will be an important dedication ceremony during the Larsen Museum Open House on May 7th. The Bob and Bea Kleis Archives will be dedicated in appreciation of the tremendous amount of time, money and material Dr. and Mrs. Kleis have donated to the development of the Tractor Museum Archives. A dedication ceremony is planned for the morning festivities with rolls and coffee being offered after the ceremonial plaque unveiling. We will also dedicate two exhibit areas in the memory of E.A. Olson and L.W. Chase who contributed the collections that are housed in the antique hand tool room and Chauncey W. Smith who contributed many of the fine examples of early agriculture implements in our plow exhibit. Please plan on attending this observance of gratitude to our thoughtful donors, Bob and Bea Kleis, E. A. Olson, L.W. Chase and Chauncey W. Smith.

Red "X" - Dues Are Due

FYI January 1 began a new membership year. Please continue your membership and send your annual \$10 made to the "Friends" of the Larsen Tractor Museum to the address on this newsletter. Donations can be made to Larsen Tractor Museum or via University of NE Foundation. Please let us know if you do not wish to receive the newsletter.