

University of Nebraska - Lincoln

## DigitalCommons@University of Nebraska - Lincoln

---

Presentations, Working Papers, and Gray  
Literature: Agricultural Economics

Agricultural Economics Department

---

June 2003

### Analysis of Corn Production and Usage

Katie Gaskins

*University of Nebraska - Lincoln*

Dennis Conley

*University of Nebraska - Lincoln, dconley1@unl.edu*

Follow this and additional works at: <https://digitalcommons.unl.edu/ageconworkpap>

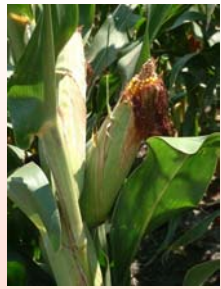


Part of the [Agricultural and Resource Economics Commons](#)

---

Gaskins, Katie and Conley, Dennis, "Analysis of Corn Production and Usage" (2003). *Presentations, Working Papers, and Gray Literature: Agricultural Economics*. 5.  
<https://digitalcommons.unl.edu/ageconworkpap/5>

This Article is brought to you for free and open access by the Agricultural Economics Department at DigitalCommons@University of Nebraska - Lincoln. It has been accepted for inclusion in Presentations, Working Papers, and Gray Literature: Agricultural Economics by an authorized administrator of DigitalCommons@University of Nebraska - Lincoln.



---

**Katie Gaskins**

Graduate Research Assistant

**Dennis Conley**

Professor

# **Analysis of Corn Production and Usage**

**Presented at the 2003 WCC-72 Meetings**

**June 9-11, 2003 in Las Vegas**

# **University of Nebraska**

**MBA Agribusiness Program**

---



© PicturesOf.NET



- 
- **Analysis of Corn Production and Usage**
    - Net Deficit States
    - Texas Corn Production
    - Nebraska Price Surface
  - **ArcView Software**
    - Illustrate spreadsheet data in 3D graphs
    - Rotate, zoom, and manipulate graphs
    - Printable 3D graphs





---

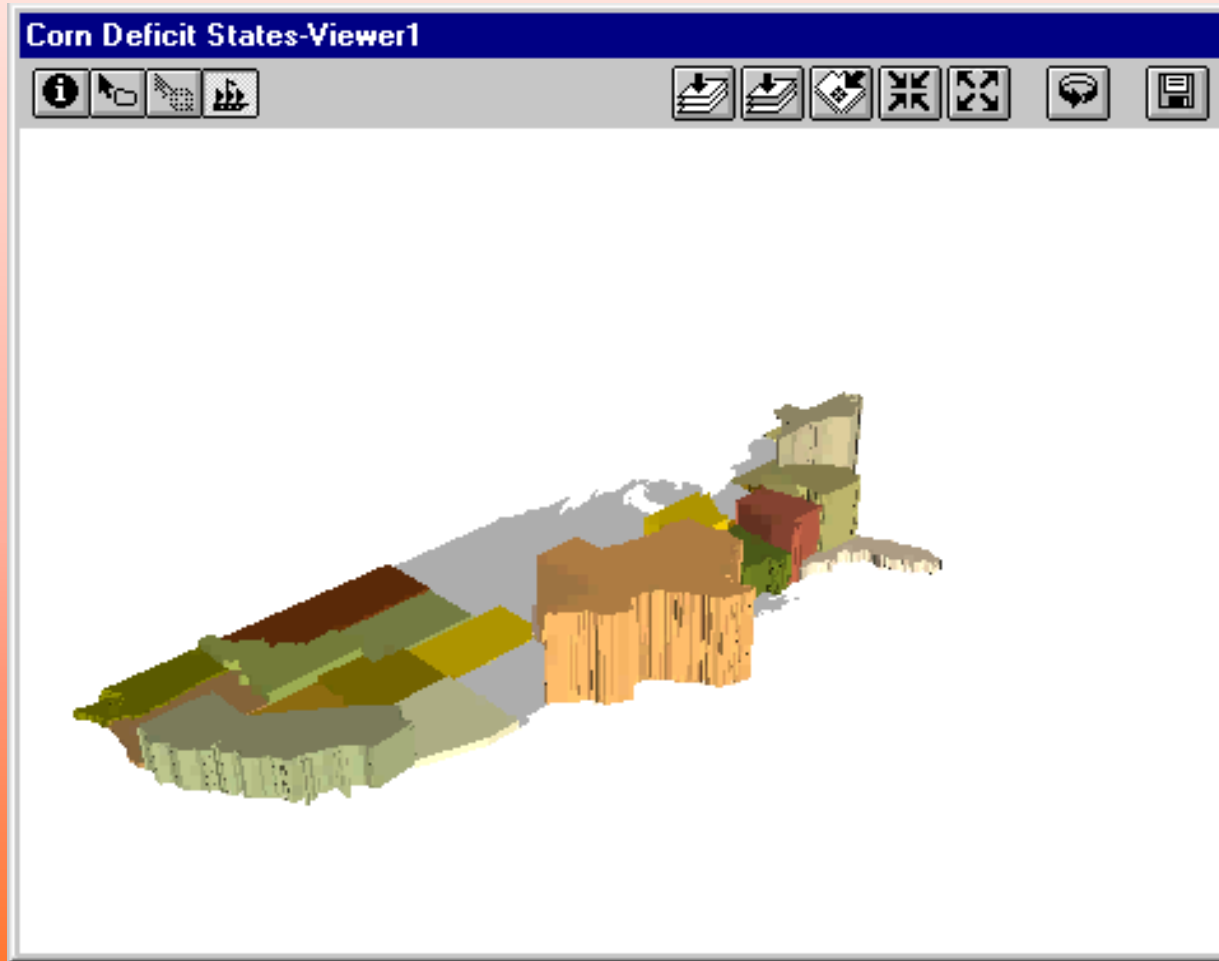
# Net Deficit States

- North Carolina
- Texas
- Georgia
- Arkansas
- Alabama





# Net Deficit States 1999





---

# Texas Corn Production

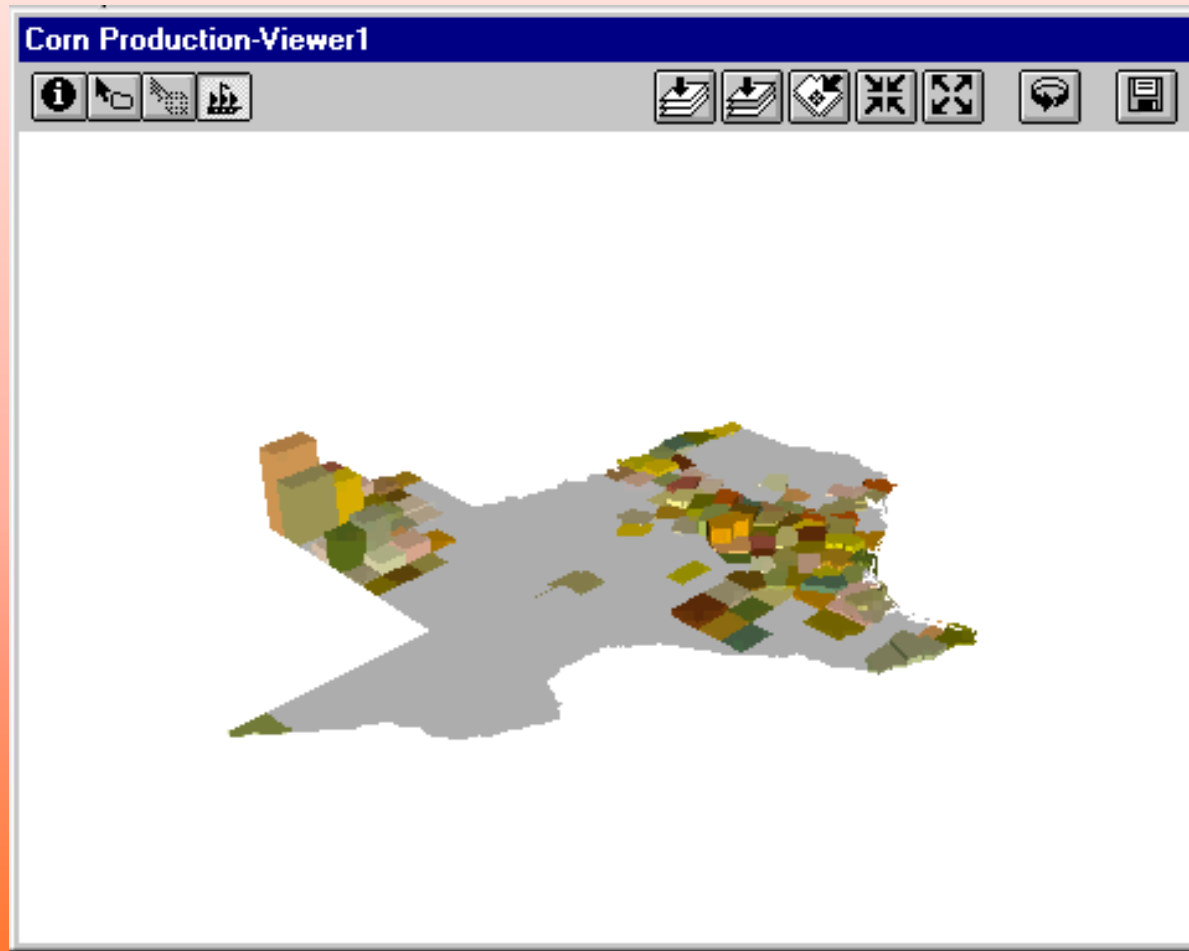
- Data at County Level
  - Panhandle
  - Central
  - Southeast





# Texas Corn Production

## 1999



University of Nebraska

MBA Agribusiness Program





---

# Nebraska Price Surface

- Daily spot prices
  - Start small scale (10 points in Nebraska)
  - Larger scale (points all over the world)
- 3-D changing surface model in ArcView

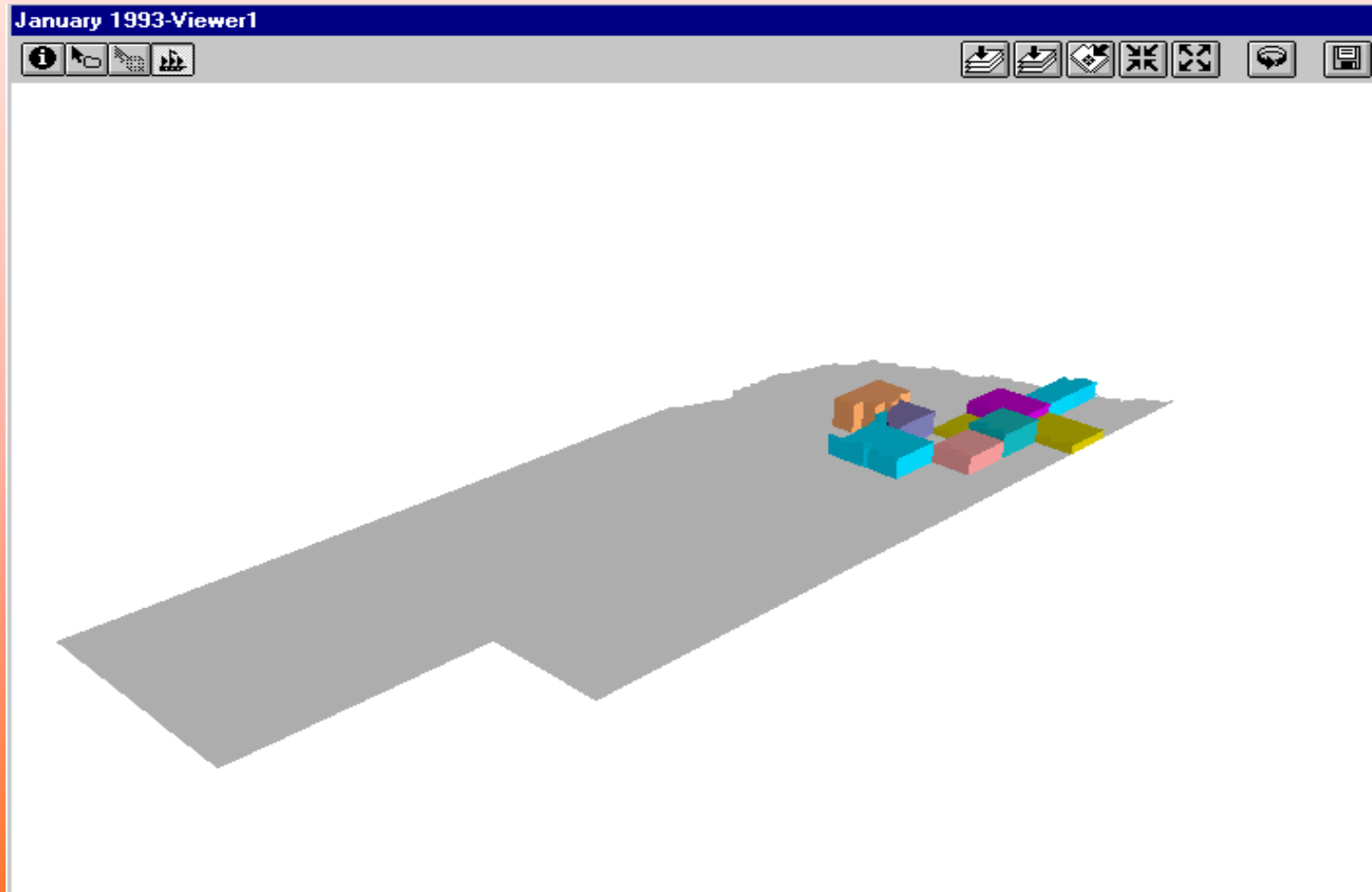






# Nebraska Price Surface

## 1993-1997



University of Nebraska

MBA Agribusiness Program



© PicturesOf.NET