

University of Nebraska - Lincoln

DigitalCommons@University of Nebraska - Lincoln

---

Nebraska Innovation Campus Materials

Nebraska Innovation Campus

---

2020

## Overview Presentation – Nebraska Innovation Campus: Spaces and Culture that Inspire

Follow this and additional works at: <https://digitalcommons.unl.edu/niccampus>



Part of the [Technology and Innovation Commons](#)

---

This Article is brought to you for free and open access by the Nebraska Innovation Campus at DigitalCommons@University of Nebraska - Lincoln. It has been accepted for inclusion in Nebraska Innovation Campus Materials by an authorized administrator of DigitalCommons@University of Nebraska - Lincoln.



# NEBRASKA INNOVATION CAMPUS

**Spaces and Culture that Inspire**



# What is NIC?



- NIC is a campus designed to facilitate new & in-depth partnerships between the University of Nebraska & private sector business.
- NIC connects the talents of experts, companies & the university to create a unique culture of innovation.



# NIC Culture

Creating physical space and events/programs that:

- Encourage unplanned conversations and creative collisions
- Promote encounters and innovation
- Engage university faculty, staff, students and the general community

# NIC Master Plan

Maps & Renderings

## Nebraska Innovation Campus

### East Campus Core Research Areas:

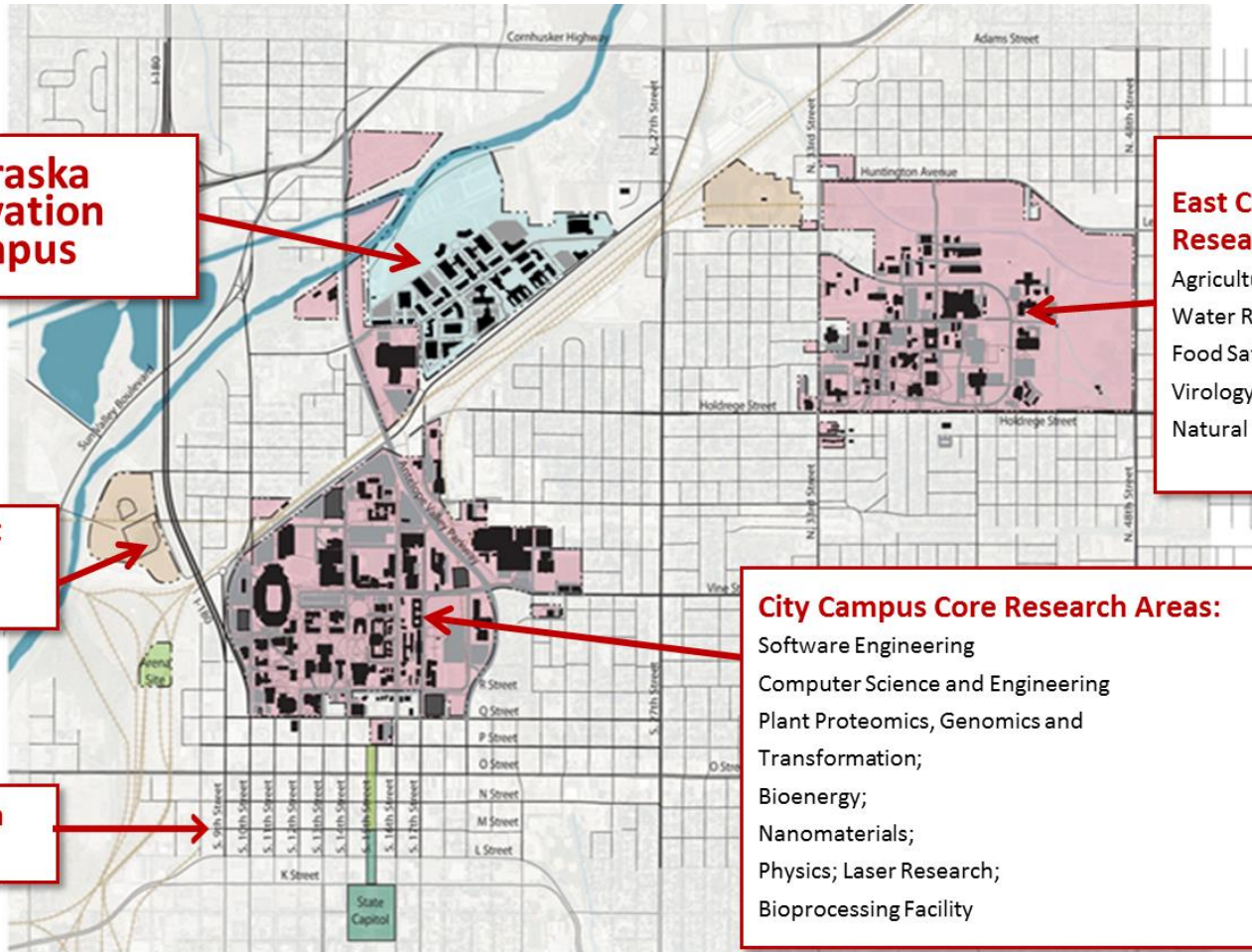
Agricultural Biotechnology;  
Water Research;  
Food Safety;  
Virology;  
Natural Resources

### Haymarket Athletics District

### City Campus Core Research Areas:

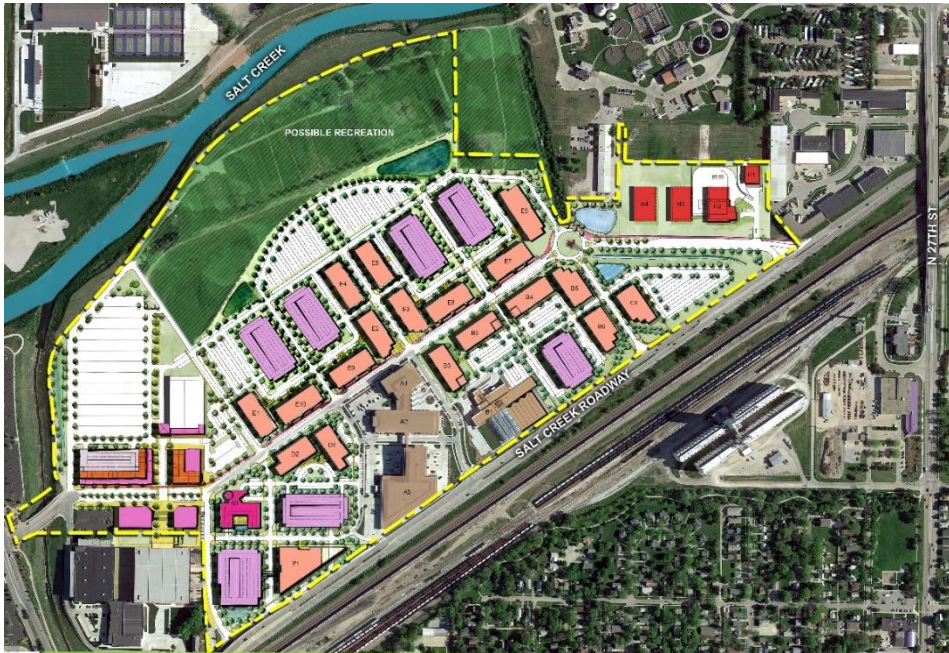
Software Engineering  
Computer Science and Engineering  
Plant Proteomics, Genomics and  
Transformation;  
Bioenergy;  
Nanomaterials;  
Physics; Laser Research;  
Bioprocessing Facility

### Downtown Lincoln





# Master Plan



- 2.2 million square feet
- 25 year build-out plan
- Average 80K square feet/year

# NIC Facilities

Innovation Commons, Food Innovation Center,  
Greenhouse Innovation Center & Rise Building



# Nebraska Innovation Campus

## 455,000 Sq. Ft.



# Innovation Commons – North Building

## 65,000 Sq. Ft.



# Innovation Advancement Suites

- Shared office concept
- Hot desks, single offices & small office suites available for lease
- Utilities, insurance, taxes & common area maintenance included in rent
- 24-hour access, 365 days per year (key card access)
- 2 conference rooms
  - Large room seats 16
  - Small room seats 4
- Kitchenette







# The Mill Coffee & Bistro

- Game changer for NIC
- Opened June 12, 2017
- Coffee, food and adult beverages on site
- Created a place where people felt welcome – especially students and the general community
- Created additional events and event space

# Innovation Commons – South Building

## 90,000 Sq. Ft.





# NIC Conference Center



The NIC Conference Center is operated and managed by the Nebraska Alumni Association. The facility includes a 400-seat auditorium with power at each seat, banquet hall and 8 breakout rooms.

# Nebraska Innovation Studio



Nebraska Innovation Studio is a dedicated space where creators of all sorts can innovate, collaborate and fabricate.

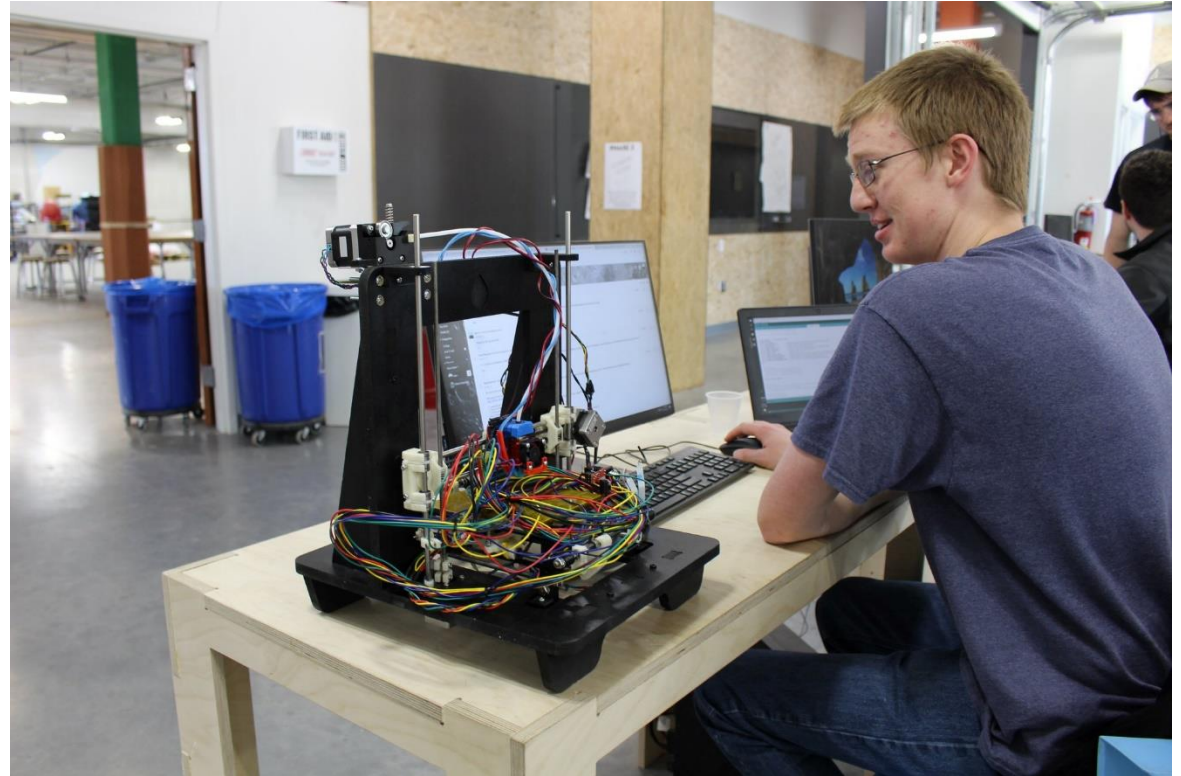
[INNOVATIONSTUDIO.UNL.EDU](http://INNOVATIONSTUDIO.UNL.EDU)

# Nebraska Innovation Studio





# Nebraska Innovation Studio



[INNOVATIONSTUDIO.UNL.EDU](http://INNOVATIONSTUDIO.UNL.EDU)

# Food Innovation Center

## 178,000 Sq. Ft.





# Brewing Equipment

- Partnering with American Beer Equipment in Lincoln
- Used for **research** into craft beer and other fermented products, developing/testing related products with industry partners, and student instruction
- Research/outreach efforts to Nebraska brewers
  - Hops growing project
  - Conferences related to craft beer production



# Biotech Connector

A collaboration between Nebraska Innovation Campus, University of Nebraska–Lincoln, Invest Nebraska, Nebraska Department of Economic Development & Bio Nebraska

- 10,000 sq. feet of wet lab research space
- Open, interactive laboratory design
- Fully furnished
- Short-to medium-term occupancy by small to mid-sized biotechnology firms
- Catalyze research advances and stimulate the development of technologies with commercialization potential
- Vertically and horizontally integrated programs designed to provide budding innovators and entrepreneurs with access to the physical resources and soft skills training needed to spark additional biotechnology firm progress in the state



# Greenhouse Innovation Center

## 45,000 Sq. Ft.

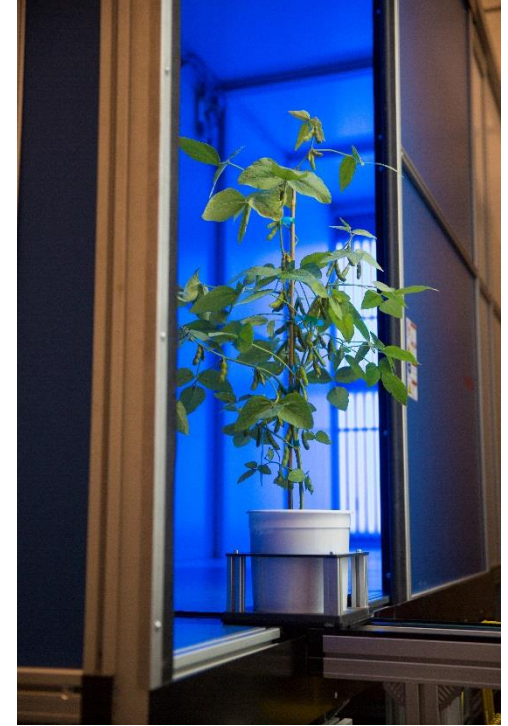




# Greenhouse Innovation Center



# LemnaTec System





# The Rise Building

## 75,000 Sq. Ft.



### Features & Amenities:

- 75,000 square feet of bright and modern space
- Build to suit space available on all three floors
- The Hub @ Rise
  - Furnished offices of varying size, collaboration spaces, shared breakroom and conference room

# The Combine



Incubator space for agriculture- and food-related startup companies

- Dedicated desks and private office spaces
- Commercialization support through mentorship and a capital readiness program, network events and a network of partnering producers across the state
- Founding Sponsors
  - Invest Nebraska
    - The state's public-private venture development organization
  - Nebraska Department of Economic Development

# THE SCARLET *Hotel*

## Opening July 2021



### Features & Amenities:

- Privately owned, operated and managed
- Six-story, 154-room Marriott Tribute property
- Educational space for the UNL HRTM Program
- Will add amenities to NIC
  - Full-service restaurant
  - Rooftop bar
  - Expanded fitness facility

# Sustainability

Sustainability & Attention to the Environment  
Matter

# Sustainability



- Sustainability and attention to the environment matter
  - Companies are calculating carbon footprints & greenhouse gas emissions
- NIC is committed to developing a sustainable environment
  - Central Renewable Energy System (CRES)
  - Zero Waste Facility
  - Smart Buildings
  - Minimum LEED Silver Design Standards



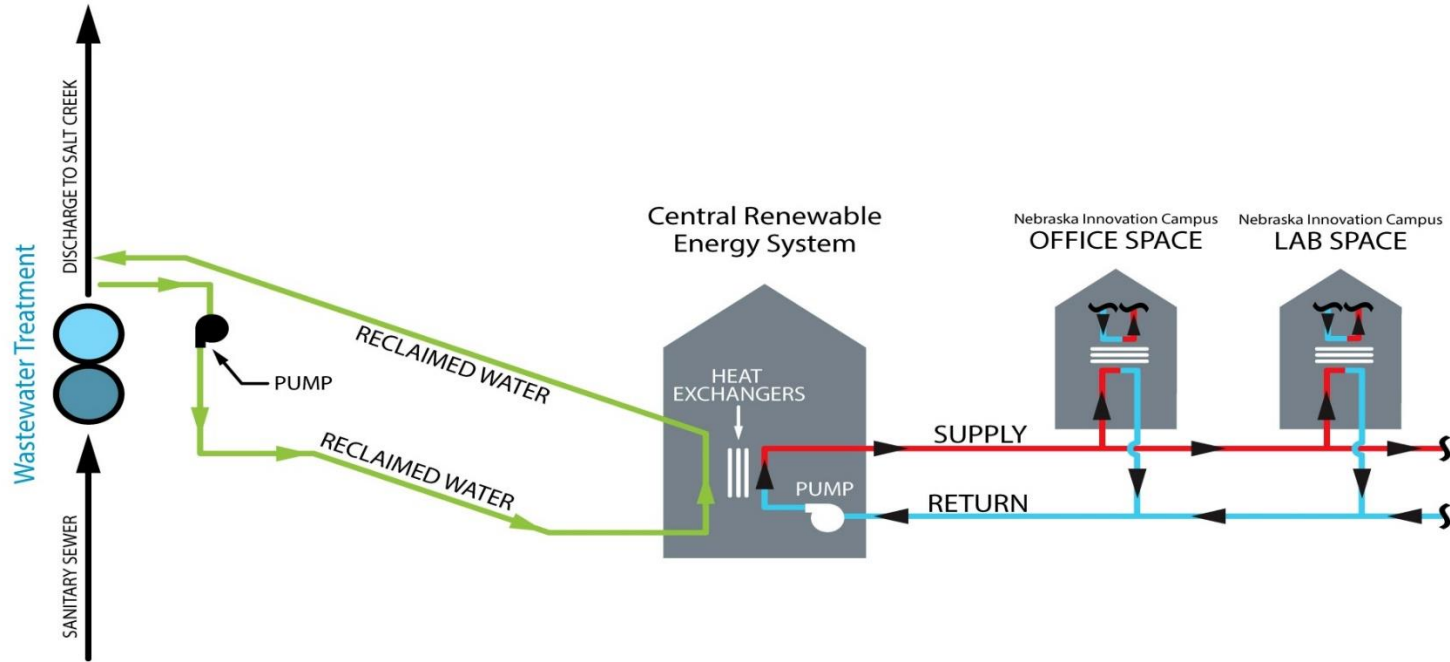
# 3 Bin Waste System



# Hefty® EnergyBag Program at NIC



The Hefty® EnergyBag program is an innovative program that uses orange Hefty® bags with existing recycling services to collect previously non-recycled plastics and convert them into valuable energy resources.



## Flow Diagram

Lincoln, Nebraska



NEBRASKA  
INNOVATION  
CAMPUS

MOLSSON®  
ASSOCIATES



NEBRASKA  
INNOVATION  
CAMPUS



# NIC Partners

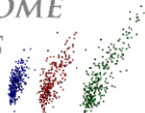
NIC is Home to Over 40 Partners with Diverse Interests & Specialties

# NIC Partners



# NIC Partners

METAGENOME  
ANALYTICS



Mutual of Omaha



NEBRASKA  
FOOD FOR HEALTH  
CENTER at the University of Nebraska



NEBRASKA  
INNOVATION  
CAMPUS



NEBRASKA  
INNOVATION  
STUDIO

Go **NEW** Where  
MOBILITY MANAGEMENT



Nebraska  
Safety Center  
EST. 1978

NEUROCARRUS



NUtech  
VENTURES®



PLATFORM *cattle*

QUANTIFIED **AG**



Water for Food  
DAUGHERTY GLOBAL INSTITUTE  
at the University of Nebraska



SignalRx  
pharmaceuticals



Spreetail



Synbiotic  
HEALTH  
the synbiotic experts™



TETRAD  
PROPERTY GROUP



the combine



NEBRASKA  
INNOVATION  
CAMPUS



# NIC Partners



# Partner with NIC



- Be a NIC Champion
  - Lease space
  - Tell our story
  - Refer a potential company
  - Host an event or conference at the NIC Conference Center





# NEBRASKA INNOVATION CAMPUS

[INNOVATE.UNL.EDU](http://INNOVATE.UNL.EDU)