

University of Nebraska - Lincoln

DigitalCommons@University of Nebraska - Lincoln

Worlds of Connections Resources

Sociology, Department of

2023

LPS–UNL Science Connector Directory 2023

Worlds of Connections SEPA

Follow this and additional works at: <https://digitalcommons.unl.edu/wrldconnex>



Part of the [Science and Mathematics Education Commons](#)

This Article is brought to you for free and open access by the Sociology, Department of at DigitalCommons@University of Nebraska - Lincoln. It has been accepted for inclusion in Worlds of Connections Resources by an authorized administrator of DigitalCommons@University of Nebraska - Lincoln.

LPS–UNL Science Connector Directory 2023

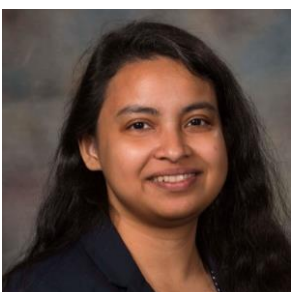
Second Floor



1. Plants Get Sick Too

Clemencia Rojas | crojas2@unl.edu

Online resource: [Clemencia Rojas | Center for Plant Science Innovation](#)



2. Energy and Nanoscience

Shudipto Dishari | sdishari2@unl.edu

Online resource: [Nanomaterials Group | College of Engineering](#)



3. ChatGPT and the Limits of AI

M. R. Hasan | hasan@unl.edu

Online resource: [HumanFirst AI Lab | College of Engineering](#)



4. Polymer Science & Engineering

Mona Bavarian | mona.bavarian@unl.edu

Online resources:

- [Research projects](#)
- [Research team](#)
- [Publications](#)



5. Nebraska Nanoscale Energy Engineering

Mohammad Ghashami | mghashami2@unl.edu

Online resource: [Nebraska Nanoscale Energy Engineering Lab](#)



6. Astronomy Curriculum Tools

Kevin Lee | klee@unl.edu

Online resource: [UNL Astronomy](#)



7. You Scratch My Back, I'll Scratch Yours: Microbial Interactions in Extreme Environments!

Wayne Riekhof | wriekhof2@unl.edu

Online resource: [@wayneriekhof](#) on Twitter



8. Nanotechnology and Biological Sensors

Nicole Iverson | iverson@unl.edu

Online resource: [Iverson Lab | College of Engineering](#)



9. Origins of Magma

Lynne Elkins | lkins@unl.edu

Online resource: [Lynne J. Elkins](#)



10. Funsiz Physics

Shireen Adenwalla | sadenwalla@unl.edu

Online resources:

- [Funsiz Physics](#)
- [Mini-Unit: Electric Crystals](#)
- [Funsiz Activities](#)



11. Cell Collective: Integrate Cutting Edge Technology Into Your Classroom

Skylar Loecker | skylar.closesmith@gmail.com

Online resources:

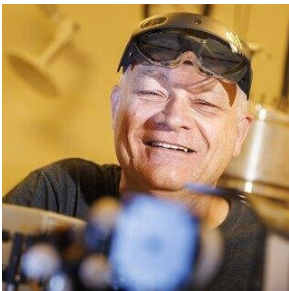
- [Cell Collective](#)
- [Helikar Lab ©](#)
- [News story](#) on work to build a digital immune system



12. Viruses and the World

Lindsey Crawford | lindsey.crawford@unl.edu

Online resource: [Crawford Lab Public Events and Resources](#)



13. Augmented Reality in Science Education

Cornelis "Kees" Uiterwaal | cornelis@unl.edu

Online resource: [News story](#) on AR for quantum physics education



14. Civic Entomology Lab

Ariel Dawdy | adawdy2@huskers.unl.edu

Online resource: [Civic Entomology Lab](#)

Third Floor



1. Morrill Hall Education Programs

Emily Brown | eosberg2@unl.edu

Online resource: [University of Nebraska State Museum of Natural History](#) educator page



2. Biological AI: How Far Can We Go with Artificial Intelligence?

Sasitharan Balasubramaniam | sasi@unl.edu

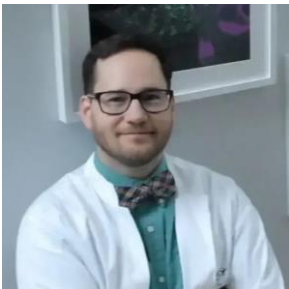
Online resource: [@SasitharanBala1](#) on Twitter



3. Growable – UNL Institute of Agriculture and Natural Resources Science Literacy

Erin Ingram | eingram3@unl.edu

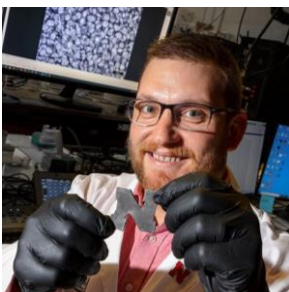
Online resource: [Growable](#)



4. Computer-driven Analyses of Behavior and Neurobiology

Ian W. Keesey | ikeesey2@unl.edu

Online resource: [Ian W. Keesey](#)



5. Smart Materials & Robotics Lab

Eric Markvicka | eric.markvicka@unl.edu

Online resources:

- [Smart Materials and Robotics Laboratory](#)
- [News story](#) on the electronic nose
- [News story](#) on soft electronics design



6. Entering the Digital World Using Mixed Reality

Hongzhi Guo | hguo10@unl.edu

Online resource: [News story](#) on smart tech for household objects



7. Biochar and Nebraska Agriculture

Britt Fossum | bfossum2@huskers.unl.edu

Online resources:

- [News story](#) on the largest biochar field trial in Nebraska
- [News story](#) on the Lincoln Biochar Initiative
- [Kaiser Lab](#)

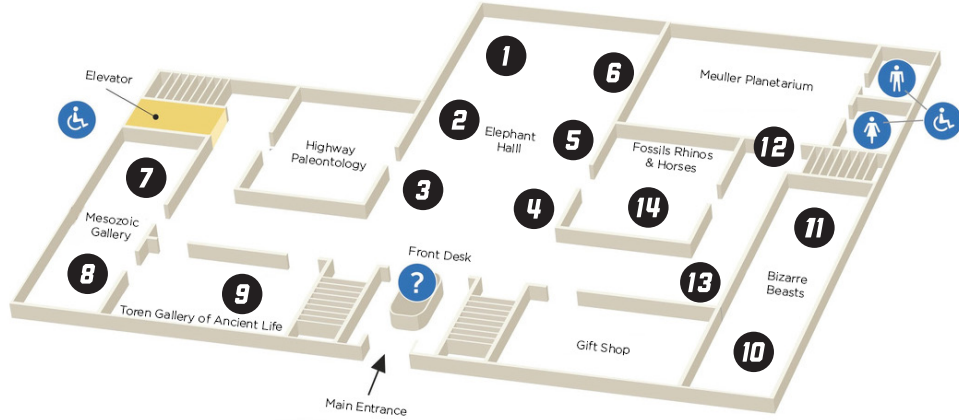


8. Unraveling Molecular Details of Cellular Communication

James Checco | checco@unl.edu

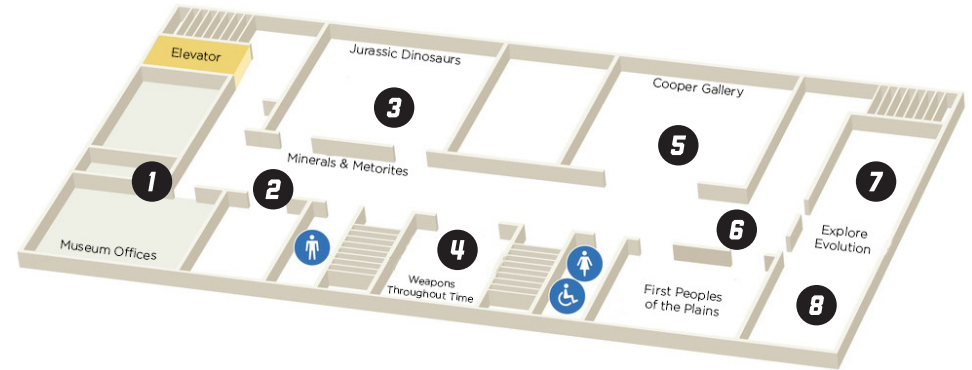
Online resource: [Checco Research Group](#)

Morrill Hall | Second Floor



- | | |
|---|--|
| 1. Plants Get Sick Too | 8. Nanotechnology and Biological Sensors |
| 2. Energy and Nanoscience | 9. Origins of Magma |
| 3. ChatGPT and the Limits of AI | 10. Funsized Physics |
| 4. Polymer Science & Engineering | 11. Cell Collective: Integrate Cutting Edge Technology Into Your Classroom |
| 5. Nebraska Nanoscale Energy Engineering | 12. Viruses and the World |
| 6. Astronomy Curriculum Tools | 13. Augmented Reality in Science Education |
| 7. You Scratch My Back, I'll Scratch Yours: Microbial Interactions in Extreme Environments! | 14. Civic Entomology Lab |

Morrill Hall | Third Floor



- | | |
|---|---|
| 1. Morrill Hall Education Programs | 5. Smart Materials & Robotics Lab |
| 2. Biological AI: How Far Can We Go with Artificial Intelligence? | 6. Entering the Digital World Using Mixed Reality |
| 3. Growable - UNL IANR Science Literacy | 7. Biochar and Nebraska Agriculture |
| 4. Computer-driven Analyses of Behavior and Neurobiology | 8. Unraveling Molecular Details Of Cellular Communication |