

University of Nebraska - Lincoln

DigitalCommons@University of Nebraska - Lincoln

Axel Enders Publications

Research Papers in Physics and Astronomy

2003

Temperature Dependence of the Surface Anisotropy of Fe Ultrathin Films on Cu(001)

Axel Enders

University of Nebraska at Lincoln, a.enders@me.com

D. Peterka

Max-Planck-Institut für Festkörperforschung

D. Repetto

Max-Planck-Institut für Festkörperforschung

N. Lin

Max-Planck-Institut für Festkörperforschung

Ivan Dmitriev

Max-Planck-Institut für Festkörperforschung, dmitriev@fkf.mpg.de

See next page for additional authors

Follow this and additional works at: <https://digitalcommons.unl.edu/physicsenders>



Part of the [Physics Commons](#)

Enders, Axel; Peterka, D.; Repetto, D.; Lin, N.; Dmitriev, Ivan; and Kern, Klaus, "Temperature Dependence of the Surface Anisotropy of Fe Ultrathin Films on Cu(001)" (2003). *Axel Enders Publications*. 20.

<https://digitalcommons.unl.edu/physicsenders/20>

This Article is brought to you for free and open access by the Research Papers in Physics and Astronomy at DigitalCommons@University of Nebraska - Lincoln. It has been accepted for inclusion in Axel Enders Publications by an authorized administrator of DigitalCommons@University of Nebraska - Lincoln.

Authors

Axel Enders, D. Peterka, D. Repetto, N. Lin, Ivan Dmitriev, and Klaus Kern

Temperature Dependence of the Surface Anisotropy of Fe Ultrathin Films on Cu(001)

A. Enders,* D. Peterka, D. Repetto, N. Lin, A. Dmitriev, and K. Kern

Max Planck Institute for Solid State Research, Heisenbergstrasse 1, 70569 Stuttgart, Germany

(Received 18 December 2002; published 30 May 2003)

We report an experimental approach to separate temperature dependent reversible and irreversible contributions to the perpendicular magnetic anisotropy of Fe films grown at low temperatures on Cu(001) substrates. The surface anisotropy $K_S(T)$ is found to decrease linearly with temperature, causing a thermally induced spin reorientation into the plane. The irreversible shift of the spin reorientation transition and the coercivity of the iron films are directly correlated to the increasing Fe island size during annealing. The increased coercivity is discussed in terms of domain wall energy inhomogeneities provided by the islands.

DOI: 10.1103/PhysRevLett.90.217203

PACS numbers: 75.30.Gw, 75.60.Ej, 75.60.Nt, 75.70.Ak

It has been demonstrated for Fe films on Cu that the easy axis of magnetization can be switched by changing the film temperature [1–3]. The observed phenomenon is ascribed to temperature dependent magnetic anisotropy constants. A direct determination of the magnetic surface anisotropy $K_S(T)$, as done for a few other systems [4–6], has not been made. The lack of experimental data in this field hinders the development of more general theoretical models about the temperature dependence of the surface anisotropy. This is mainly due to the experimental difficulty to separate pristine magnetic effects from thermally induced structural changes. Irreversible changes, such as the change in roughness or intermixing at the interface, are known to alter the anisotropy significantly [7] and superimpose the reversible contribution, making independent measurements difficult. However, thermally induced structural driven changes of the magnetic film properties offer the chance to study the basic relation between magnetism and film structure.

In this Letter, we present an experimental approach to separate temperature dependent reversible and irreversible contributions to the magnetic anisotropy of epitaxial Fe films on Cu(001). Thus, both contributions can be determined independently. We find a reversible linear decrease of the surface anisotropy constant $K_S(T)$ in the temperature range between 127 and 300 K. On the other hand, we exploit temperature induced irreversible changes of the spin reorientation transition (SRT) and the coercivity H_C to quantify the correlation between microstructure and magnetism.

As a model system, we study epitaxial fcc-Fe films grown at 120 K on Cu(001). The structure and magnetism of the films is known to strongly deviate from Fe bulk behavior. Below a thickness of $t_{Fe} \sim 4.3$ ML, a tetragonally distorted fcc structure is found [8,9]. In the same thickness region, the easy axis of magnetization is reoriented out of the film plane [10], ascribed to dominating surface anisotropy contributions [11,12]. The morphology sensitively depends on the growth temperature [13] and the thermal treatment after growth [14]. We focus on low

temperature grown films since they exhibit enhanced surface roughness compared to films grown at room temperature [13,15]. Thermally activated changes of the film morphology and its consequences for the film magnetism can thus ideally be studied.

The films have been grown at substrate temperatures of 120 K in a UHV system with a base pressure of 7×10^{-11} mbar. Fe films with varying thickness have been produced by depositing over a straight metal plate mounted on the front end of the evaporator, thus producing a half shadow region of deposition on the sample surface. Magnetic investigations have been done by *in situ* Kerr microscopy as well as standard magneto-optical Kerr-effect measurements [16]. The critical thickness t_{crit} for spin reorientation in ultrathin Fe films on Cu(100) is governed mainly by the magnetic interface anisotropy arising at the film-vacuum and -substrate interfaces, K_{f-vac} and K_{f-s} [12],

$$t_{crit} = \frac{2(K_{f-vac} + K_{f-s})}{2B_1(\varepsilon_{\perp} - \varepsilon_{\parallel}) + \mu_0 M_S^2}. \quad (1)$$

Here B_1 is the bulk magnetoelastic (ME) coupling constant, ε_{\perp} and ε_{\parallel} being the in-plane and out-of-plane strain, and M_S is the saturation magnetization. The observed critical thickness of the as-grown film, $t_{crit} = 4.3$ ML, is reproduced by inserting $K_{f-vac} = 0.89$ mJ/m², $K_{f-s} = 0.6$ mJ/m², $M_S = 1751$ kA/m, $\varepsilon_{\parallel} = 5\%$, and $\varepsilon_{\perp} = 1.54\%$ ([12] and references therein). An effective $B_1^{eff}(\varepsilon_{\parallel}) = 13.5$ MJ/m³ has been used to account for the strain dependence of the ME coupling [17]. Assuming the effective epitaxial strain and the B_1 to be independent of the film temperature, as it is for bulk below 300 K [18], changes in t_{crit} are attributed solely to a temperature dependence of the magnetic surface anisotropy. This approximation is based on the fact that the surface anisotropy is by far the dominant energy contribution, and changes in B_1^{eff} during the growth of already existing islands are small.

Temperature driven reversible and irreversible changes of the magnetic properties of Fe on Cu can separately be identified by monitoring the magnetism during annealing/cooling cycles. Such an experiment is shown in Fig. 1. The Kerr image in Fig. 1(a) shows the remanent magnetization of a Fe wedge around the SRT. The change in the grey level at position α marks the critical thickness at which the easy axis of magnetization switches from perpendicular (dark) to in-plane (bright). Figure 1(b) shows the shift of the SRT towards a smaller thickness $\beta = 3.73$ ML during heating of the sample up to 280 K with a rate of approximately 5–10 K/min. No further shift is observed when the sample temperature is held constant at the annealing temperature T_a for 60 min. Subsequent cooling back to 127 K also shifts the SRT back to a higher thickness $\gamma \neq \alpha$ [Fig. 1(c)], but the critical thickness as in Fig. 1(a) cannot be achieved. Repeating the experiment now shifts the SRT reversibly between β and γ . Thus, at a given Fe thickness, the easy axis of magnetization can be switched reversibly between out-of-plane and in-plane by changing the temperature.

The full temperature dependence of t_{crit} between 127 and 300 K is shown in Fig. 2(a). During the experiment the sample temperature was cycled between 127 K and T_a , as already shown in Fig. 1. In every subsequent warming-cooling cycle, the T_a was increased by approximately 20 K with respect to the previous cycle, until $T_a = 300$ K was reached. The t_{crit} was recorded at each temperature after realignment of the spins by an external field pulse of $H = 25$ mT. The solid dots (●) in Fig. 2(a) represent the critical thickness at the indicated annealing temperature. Plotted at the same temperature as open dots (○) is the changed critical thickness after the sample was being cooled back to 127 K from the respective T_a . Thus, these data are taken at identical experimental conditions, i.e., the same temperature. They therefore reflect the irrevers-

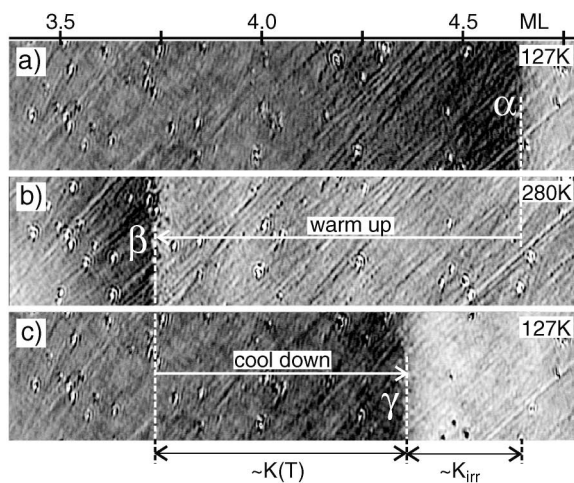


FIG. 1. Thermally induced shift of the reorientation transition of a Fe wedge. (a),(b) t_{crit} changes from α to β when raising the temperature from 127 to 280 K. (c) Cooling back to 127 K shifts the reorientation transition to $\gamma \neq \alpha$.

ible changes of the critical thickness after the annealing. In contrast, the difference between the two data sets in Fig. 2(a) represents purely the reversible shift of the critical thickness with temperature, analogous to the shift of t_{crit} between β and γ in Fig. 1. Subtracting both data sets in Fig. 2(a) yields the linear dependence depicted in Fig. 2(b).

We ascribe the reversible change in t_{crit} to the temperature dependence of the surface anisotropy constants of the film, $K_S = K_{\text{f-vac}} + K_{\text{f-s}}$. The irreversible changes are attributed to thermally activated structural changes in the film. In this picture, K_S as the origin of the perpendicular magnetization may be separated into a temperature dependent reversible and an irreversible contribution,

$$K_S = K(T) + K_{\text{irr}}. \quad (2)$$

In this notation, $K(T)$ is the anisotropy of a film that is assumed not to change its structure during annealing. By performing the experiment shown in Fig. 1, both contributions, $K(T)$ and K_{irr} , could be separated experimentally for ultrathin films for the first time. The trick used here is to cycle the temperature between annealing and growth temperature. After the structural changes are fully accomplished during the first cycle, K_{irr} is zero in the subsequent cycle. Thus, the reversible shift with temperature can exclusively be recorded. The difference of t_{crit} between 127 K and T_a is plotted in Fig. 2(b) and converted into $K(T)$ using expression (1). We find $K(T)$ to decrease linearly with respect to its value at $T = 127$ K as the temperature is increased in the range below 300 K.

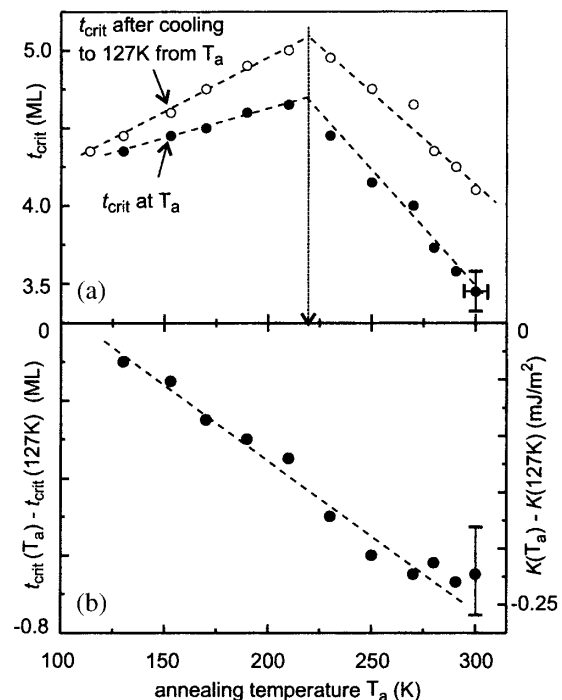


FIG. 2. (a) Temperature dependence of the critical thickness in the temperature range between 127 K and RT. (b) The difference of both data sets in (a) is proportional to $K(T)$.

Qualitatively, the result agrees with theoretical models that predict a reduced anisotropy as the thermally induced jiggling of the spins reduces the expectation value of the magnetization. It can be shown that the anisotropy $K(T, H)$ follows the temperature dependence of the reduced saturation magnetization, $[M(T, H)/M(0)]^b$, and therefore vanishes at the Curie temperature T_C [19]. Calculations of the anisotropy coefficients of a ferromagnetic Heisenberg monolayer also reflect this tendency, independent of the underlying method [20]. A quantitative comparison of our data with such models requires an analysis in terms of T/T_C . For the films investigated, T_C is well above 300 K and could therefore not be measured due to the onset of intermixing at the Fe/Cu interface. However, similar results of decreasing surface anisotropy with temperature have been found by other authors for Ni/Re(0001) [5] and Ni/W(110) [6]. The trend of the few data available suggests that the destruction of the perpendicular ferromagnetic ordering of the spins by the thermal agitation at the Curie temperature is always preceded by a spin reorientation into the plane.

The data in Fig. 2(a) clearly reflect the competition of anisotropy contributions of opposite sign. While annealing of the films below 220 K causes an increase of t_{crit} , further annealing above 220 K reduces it. In the following, we discuss the observed temperature dependence of t_{crit} in Fig. 2(a) in terms of a competition between thermally activated morphological changes, superimposed by the reversible $K_S(T)$ dependence in Fig. 2(a). The morphology changes in the surface structure of a three monolayer thin Fe film grown at 120 K on Cu(001) have been studied during annealing by variable temperature scanning tunneling microscopy (STM). Figures 3(a)–3(d) show STM images of the film at four different temperatures. The following conclusions can be drawn from these images: (i) Below ~ 240 K the island size increases from ≤ 1 nm up to ≈ 5 nm with temperature. (ii) No further island size growth is observed above 240 K up to room temperature. (iii) The rms roughness of the film of $\sigma = 1.5 \pm 0.5$ Å remains unchanged in the temperature range investigated. In other words, visible improvements of the film quality mainly affect the island diameter and are accomplished below 240 K.

Based on this result, we conclude that the observed increase of t_{crit} below 220 K in Fig. 2(a) is a consequence of the enlargement of the island diameter in the film. This is in full agreement with arguments given by Bruno, according to which the magnetic surface anisotropy K_S

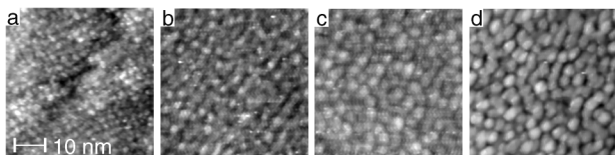


FIG. 3. STM images of a 3 ML Fe film grown on Cu(100) at 120 K, (a) at 165, (b) 215, (c) 238, and (d) 296 K.

of a film with surface roughness σ and island width L is reduced by ΔK_S with respect to the ideally flat surface, following the expression $\Delta K_S/K_S = -2\sigma/L$ [7]. For the Fe films studied here, this means that, although the σ remains unchanged, the surface anisotropy in the as-grown film is smaller than in the annealed film due to the smaller island size L . The K_S increases with T due to the increase of L shifting the t_{crit} towards higher thickness. This effect is opposed by the reversible temperature dependence of $K_S(T)$, which tends to decrease t_{crit} in the whole temperature range investigated.

After the island formation is accomplished at 240 K, another effect irreversibly decreasing t_{crit} becomes visible at higher temperatures in Fig. 2(a). One might speculate whether the formation of bcc crystallites during warming, as have been seen with high resolution STM on RT grown Fe films [21], reduce the perpendicular anisotropy by gradually making the fcc film more bcclike. This idea is supported by recent experiments showing drastic changes of the morphology of a RT grown fcc-Fe film on Cu(001) after cooling and subsequent warming up to 300 K, ascribed to a transition of the film towards bcc structure [14]. Thermally activated interdiffusion between Fe and Cu, which is known to alter the magnetic anisotropy energy [22], does not have to be considered here since it is found to be negligible below 300 K [23].

Also, the coercivity H_C is significantly increased by the island growth. This becomes evident from $H_C(T)$ measurements during annealing of 3 ML Fe grown at 120 K (Fig. 4). The temperature dependence of H_C during the first annealing directly after growth (+) looks markedly different than during subsequent annealing where the $H_C(T)$ reproducibly follows the curve represented by (○). Clearly, after the first annealing the H_C at 127 K is irreversibly increased and decays exponentially with temperature (dashed line).

The observed enhancement of H_C can be explained within a model of energy inhomogeneities due to

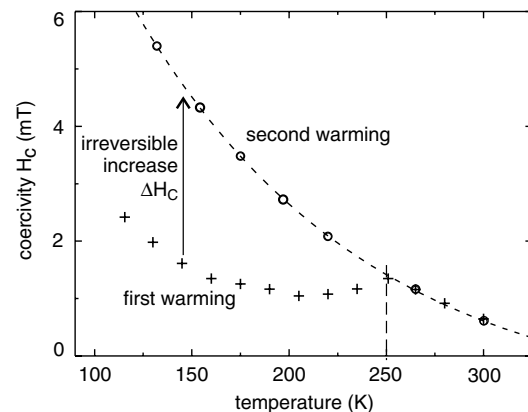


FIG. 4. Temperature dependence of the coercivity of 3 ML Fe grown at 127 K during the first (+) and subsequent (○) annealing.

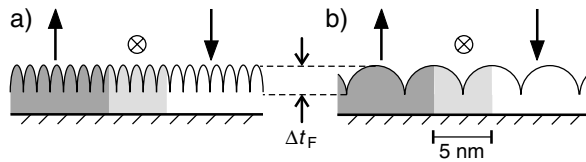


FIG. 5. Model of the Bloch domain wall (BW) width with respect to the island size. Annealing of the as-grown film (a) results in island sizes comparable to the BW width (b).

the film thickness variation Δt_F , taking into account the increase of the Fe island size. The energy and, thus, the field needed to reverse the magnetization in the sample are determined by the variation of the free energy of the domains, $H_C \sim \partial E / \partial r$. The enhanced domain wall energy at the island sites provides the main obstacle for domain wall propagation, thus determining the coercivity. The domain wall energy varies with film thickness due to exchange and anisotropy inhomogeneities [24]. The wall exchange energy variation is deduced from the morphology data in Fig. 3 and found to be $\Delta\gamma = 1 \times 10^{-11}$ J/m as a result of $\Delta t_F = 4.8$ Å. Additionally, the magnetic anisotropy due to thickness effects and strain relaxation varies with island size, further contributing to the energy barriers at the island sites. This means that it is less favorable for the domain wall to enter the 3D islands due to the enhanced wall energy there. Domain wall movement is most efficiently blocked if the island size L becomes comparable to the Bloch wall width $\delta = \sqrt{A t_F / K_S}$.

Inserting the film thickness of 3 ML Fe, $t_F = 5.4$ Å, exchange stiffness $A = 2 \times 10^{-11}$ J/m, and $K_S = 1.49$ mJ/m² gives the wall width of $\delta = 6$ nm. This reveals the origin of the increase of H_C , as illustrated in Fig. 5: Without annealing, the domain wall stretches over several islands [Fig. 5(a)]. Wall movement is easy in this case. With increasing film temperature, the islands become bigger and reach at $T \sim 240$ K a size comparable to the domain wall width, $L \cong \delta$. Now the wall is being trapped between two adjacent energy barriers. Further increase of the temperature above 240 K does not further change the island size, and the change of H_C with temperature is fully reversible ($\Delta H_C = 0$). Repeating the experiment gives reproducibly the exponential dependence of $H_C(T)$ (○) simply due to thermally activated overcoming of the energy barriers at the island sites. Although the islands themselves provide these energy barriers, they do not represent the Barkhausen volume. In temperature dependent magnetic viscosity measurements, we found the Barkhausen volume to vary from 80 nm at 127 K up to 220 nm at RT, thus being much larger than the Fe islands. These results are in full agreement with similar experiments published in Ref. [25].

In conclusion, reversible and irreversible thermal contributions to the magnetism of epitaxial Fe films have been separated experimentally, allowing for their individual investigation. We find that the surface anisotropy

decreases reversibly with increasing temperature, causing a spin reorientation into the film plane. The irreversible change of the critical thickness and the coercivity with temperature could clearly be correlated to the change of the island size.

*Electronic addresses: a.enders@fkf.mpg.de

- [1] D. P. Pappas, K.-P. Kämper, B. P. Miller, H. Hopster, D. E. Fowler, A. C. Luntz, C. R. Brundle, and Z.-X. Shen, *J. Appl. Phys.* **69**, 5209 (1991).
- [2] R. Allenspach and A. Bischof, *Phys. Rev. Lett.* **69**, 3385 (1992).
- [3] R. Allenspach, *J. Magn. Magn. Mater.* **129**, 160 (1994).
- [4] G. Garreau, E. Beaurepaire, K. Ounadjela, and M. Farle, *Phys. Rev. B* **53**, 1083 (1996).
- [5] R. Bergholz and U. Gradmann, *J. Magn. Magn. Mater.* **45**, 389 (1984).
- [6] M. Farle, B. Mirwald-Schulz, A. Anisimov, W. Platow, and K. Baberschke, *Phys. Rev. B* **55**, 3708 (1997).
- [7] P. Bruno, *J. Phys. F: Met. Phys.* **18**, 1291 (1988).
- [8] H. Zillgen, B. Feldmann, and M. Wuttig, *Surf. Sci.* **321**, 32 (1994).
- [9] S. Müller, P. Bayer, A. Kinne, C. Reischl, R. Metzler, and K. Heinz, *Surf. Sci.* **322**, 21 (1995).
- [10] S. Müller, P. Bayer, C. Reischl, K. Heinz, B. Feldmann, H. Zillgen, and M. Wuttig, *Phys. Rev. Lett.* **74**, 765 (1995).
- [11] J. Shen, A. K. Swan, and J. F. Wendelken, *Appl. Phys. Lett.* **75**, 2987 (1999).
- [12] D. Peterka, A. Enders, G. Haas, and K. Kern, *Phys. Rev. B* **66**, 104411 (2002).
- [13] J. Giergiel, J. Shen, J. Woltersdorf, A. Kirilyuk, and J. Kirschner, *Phys. Rev. B* **52**, 8528 (1995).
- [14] D. Qian, X. F. Jin, J. Barthel, M. Klaua, and J. Kirschner, *Phys. Rev. Lett.* **87**, 227204 (2001).
- [15] E. Mentz, D. Weiss, J. Ortega, A. Bauer, and G. Kaindl, *J. Appl. Phys.* **82**, 482 (1997).
- [16] D. Peterka, A. Enders, G. Haas, and K. Kern, *Rev. Sci. Instrum.* **74**, 2744 (2003).
- [17] T. Gutjahr-Löser, Ph.D. thesis, Martin-Luther-Universität Halle Wittenberg, 1999.
- [18] M. B. Stearns, in *Magnetic Properties of Metals*, edited by O. Madelung and H. P. J. Wijn, Landolt-Börnstein, New Series, Group III, Vol. 19, Pt. a (Springer-Verlag, Berlin, 1986), p. 49.
- [19] E. Callen, *J. Appl. Phys.* **53**, 8139 (1982).
- [20] A. Ecker, P. Fröbrich, P. Jensen, and P. Kuntz, *J. Phys. Condens. Matter* **11**, 1557 (1999).
- [21] A. Biedermann, R. Tscheliessnig, M. Schmid, and P. Varga, *Phys. Rev. Lett.* **87**, 086103 (2001).
- [22] B. Újfalussy, L. Szunyogh, and P. Weinberger, *Phys. Rev. B* **54**, 9883 (1996).
- [23] D. Steigerwald, I. Jacob, and J. W. F. Egelhoff, *Surf. Sci.* **202**, 472 (1988).
- [24] D. Sander, R. Skomski, C. Schmidhals, A. Enders, and J. Kirschner, *Phys. Rev. Lett.* **77**, 2566 (1996).
- [25] A. Kirilyuk, J. Giergiel, J. Shen, and J. Kirschner, *J. Magn. Magn. Mater.* **159**, L27 (1996).