

University of Nebraska - Lincoln

DigitalCommons@University of Nebraska - Lincoln

Publications, etc. -- Nebraska Forest Service

Nebraska Forest Service

2009

WANTED: Dead or Alive, Emerald Ash Borer

Laurie Stepanek
Nebraska Forest Service

Follow this and additional works at: <https://digitalcommons.unl.edu/nebforestpubs>



Part of the [Forest Sciences Commons](#)

Stepanek, Laurie, "WANTED: Dead or Alive, Emerald Ash Borer" (2009). *Publications, etc. -- Nebraska Forest Service*. 30.

<https://digitalcommons.unl.edu/nebforestpubs/30>

This Article is brought to you for free and open access by the Nebraska Forest Service at DigitalCommons@University of Nebraska - Lincoln. It has been accepted for inclusion in Publications, etc. -- Nebraska Forest Service by an authorized administrator of DigitalCommons@University of Nebraska - Lincoln.

How to Recognize Ash Trees



- Compound leaves (5-11 leaflets per leaf)
- Leaflets 2-5 inches long



- Paddle-shaped seeds
- 1-2 inches long
- Some trees are seedless



Ash twigs occur in pairs on opposite sides of a branch.



Twigs of many other trees occur singly and alternate from side to side.

All insect and damage photos courtesy of:
Bugwood.org
Cover: David Cappaert, Michigan State University
Adult on bark: Ed Czerwinski, Ontario Ministry of Natural Resources
Exit hole: David R. McKay, USDA APHIS PPQ
Tunnels: Ed Czerwinski, Ontario Ministry of Natural Resources
Dieback: Joseph O'Brien, USDA Forest Service
Stripped bark: Art Wagner, USDA APHIS PPQ
Infested wood: Troy Kimoto, Canadian Food Inspection Agency
Larva: David Cappaert, Michigan State University
Ash identification photos: Laurie Stepanek, Nebraska Forest Service

Laurie Stepanek
Nebraska Forest Service



Nebraska
Forest
Service



The University of Nebraska-Lincoln does not discriminate based on gender, age, disability, race, color, religion, marital status, veteran's status, national or ethnic origin, or sexual orientation.



Nebraska Forest Service

WANTED: Dead or ~~Alive~~

Emerald Ash Borer




**For killing more than
50 million ash trees
in Michigan, Ohio,
Indiana & Ontario**

Emerald ash borer (EAB) has caused extensive tree death since its discovery in Michigan in 2002. This notorious killer has also been found in several other states including Illinois, Kentucky, Maryland, Minnesota, Missouri, Pennsylvania, Virginia, West Virginia and Wisconsin. It is only a matter of time before emerald ash borer is found in Nebraska.

How to Recognize Emerald Ash Borer



- Slender beetle
- Emerald-green
- 1/2 inch long

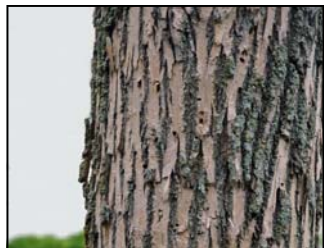
actual size: 

- D-shaped exit holes in ash bark
- 1/8 inch diameter



- Zig-zag tunnels under ash bark
- Tunnels packed with frass/sawdust

- Dieback beginning at top of ash tree
- Thin crown



- Woodpecker activity in ash trees
- Bark stripping

Emerald Ash Borer Facts

- ✓ Discovered in 2002 killing trees near Detroit, Michigan
- ✓ Native to eastern Asia
- ✓ Kills trees by tunneling beneath the bark
- ✓ Trees usually die within a few years following infestation
- ✓ Easily transported to new areas in infested firewood
- ✓ Threatens to wipe out Nebraska's 30 million ash trees
- ✓ Kills all North American species of ash* including green, white, black, and blue ash and their cultivars such as:

Marshall's Seedless	Autumn Purple
Patmore	Autumn Applause
Bergeson	Autumn Blaze
Cimmaron	Fallgold
Summit	True Blue

* Emerald ash borer does not attack mountain-ash, which is not a true ash.

Help Us Control This Notorious Killer!

Emerald ash borer is easily transported long distances in infested firewood.



Do not carry firewood when you travel.
Collect or buy firewood at your destination.

If you think you have found the emerald ash borer please contact:

Nebraska Forest Service:
402-472-2944

Nebraska Department of Agriculture:
402-471-2394

USDA-APHIS-PPQ
Nebraska office:
402-434-2345