

University of Nebraska - Lincoln

DigitalCommons@University of Nebraska - Lincoln

ALEC Department Materials and History

Agricultural Leadership, Education &
Communication Department

January 2003

AgLEC Graduate Academic Program

Follow this and additional works at: <https://digitalcommons.unl.edu/aglecdeptmatls>



Part of the [Other Public Affairs, Public Policy and Public Administration Commons](#)

"AgLEC Graduate Academic Program" (2003). *ALEC Department Materials and History*. 31.
<https://digitalcommons.unl.edu/aglecdeptmatls/31>

This Article is brought to you for free and open access by the Agricultural Leadership, Education & Communication Department at DigitalCommons@University of Nebraska - Lincoln. It has been accepted for inclusion in ALEC Department Materials and History by an authorized administrator of DigitalCommons@University of Nebraska - Lincoln.

January 2003

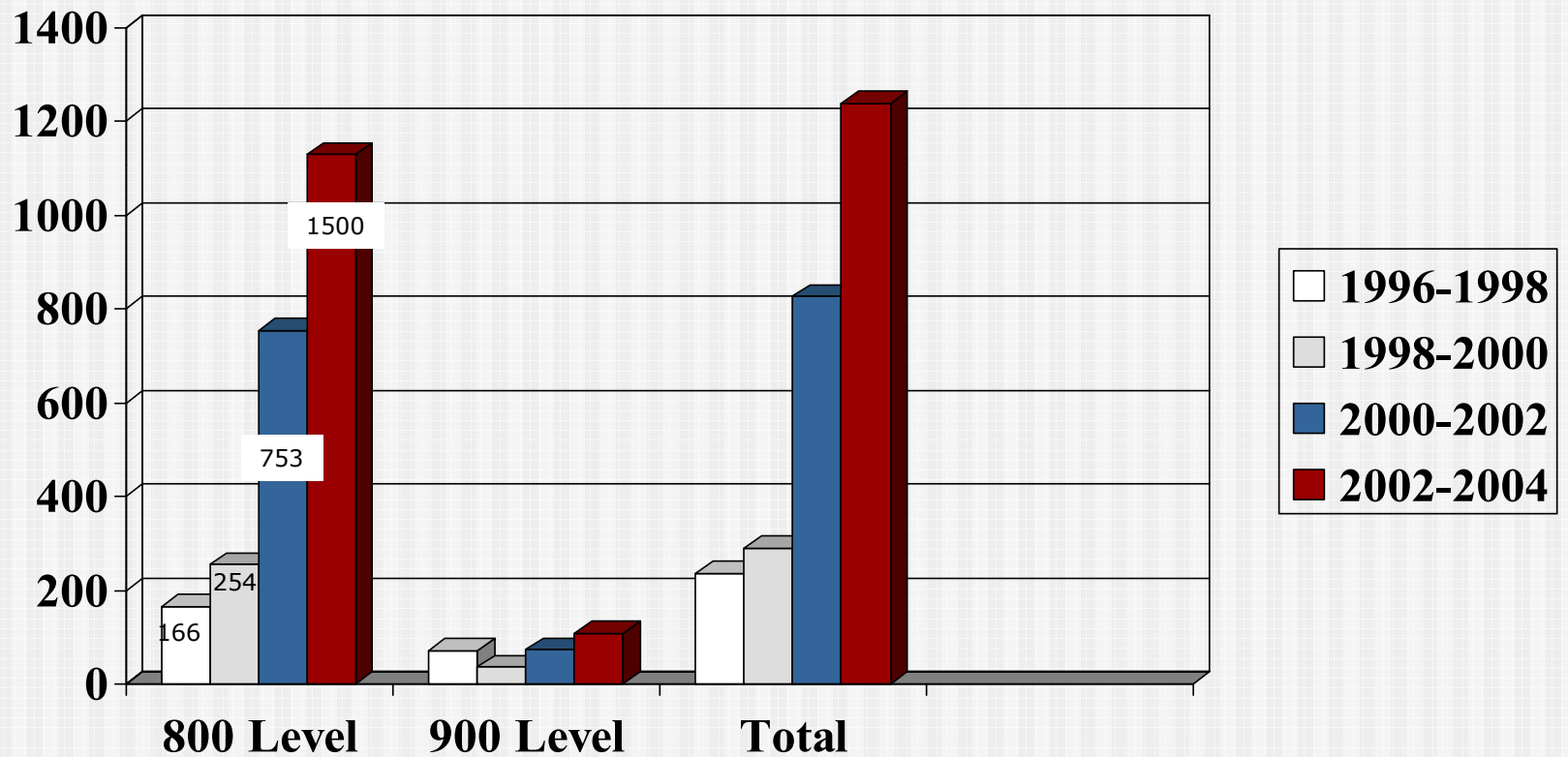
Graduate Academic Program



Recent Significant Events

- Masters degree possible via distance.
- **Leadership Studies** doctoral specialization approved.
- Significant increases in enrollments at masters and doctoral programs.

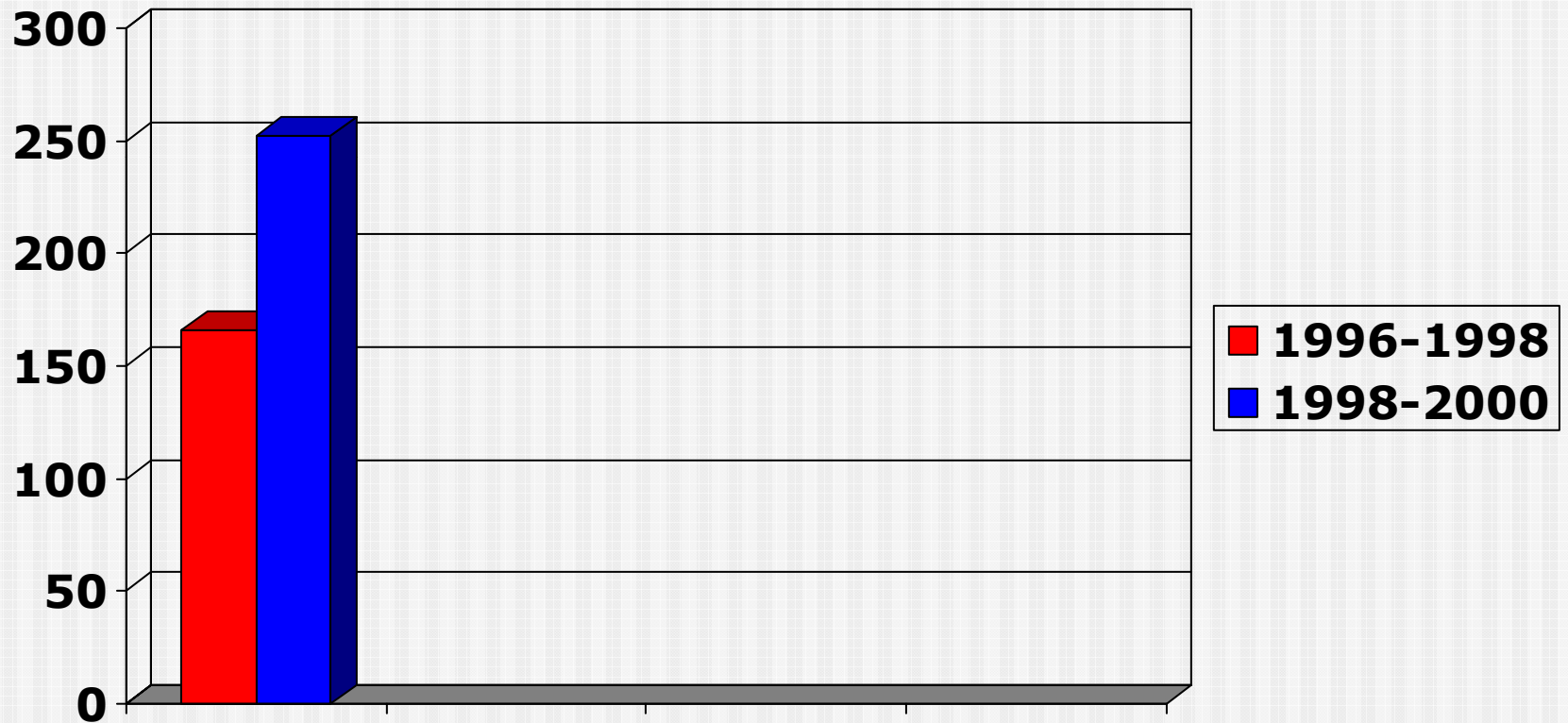
Student Credit Hours (Fall Only)



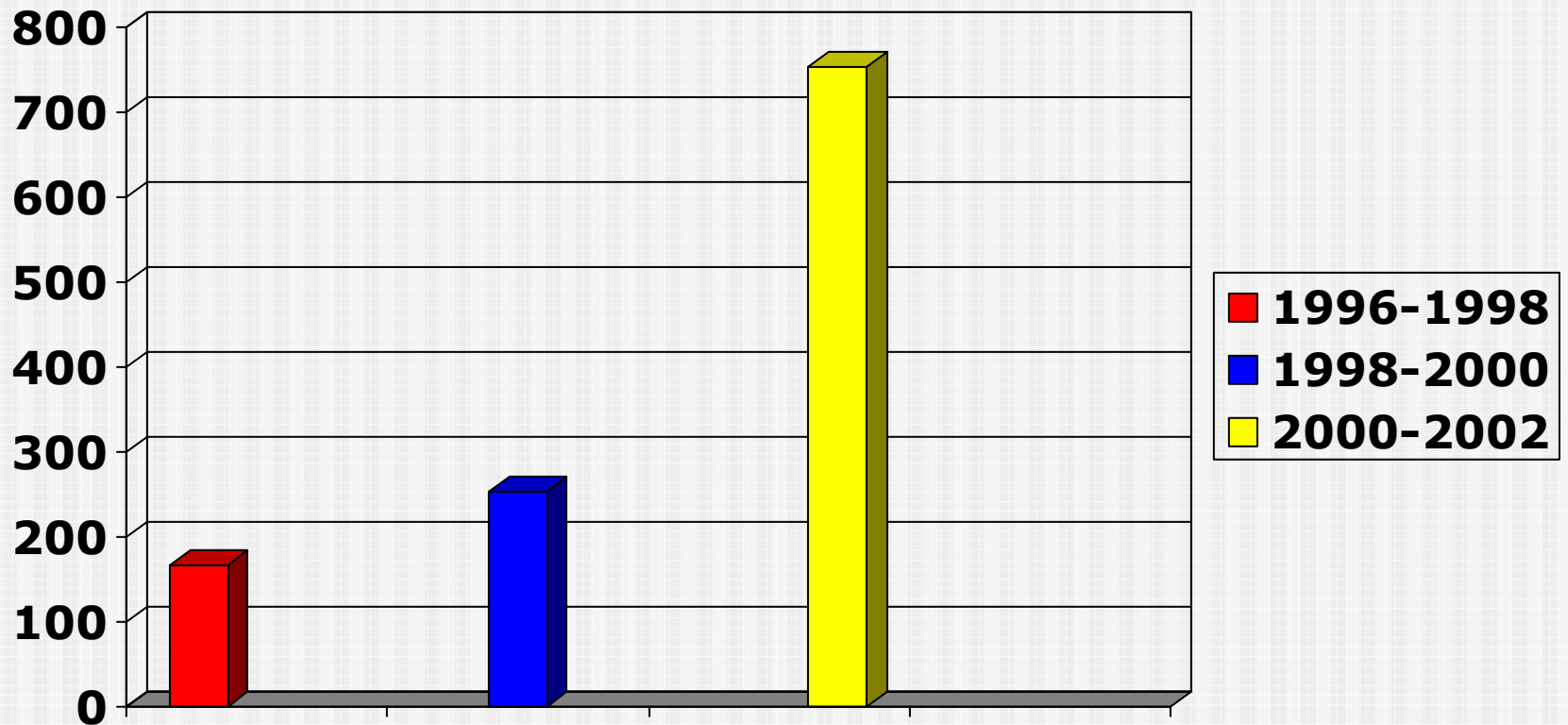
800 Level Student Credit Hours (Fall Only)



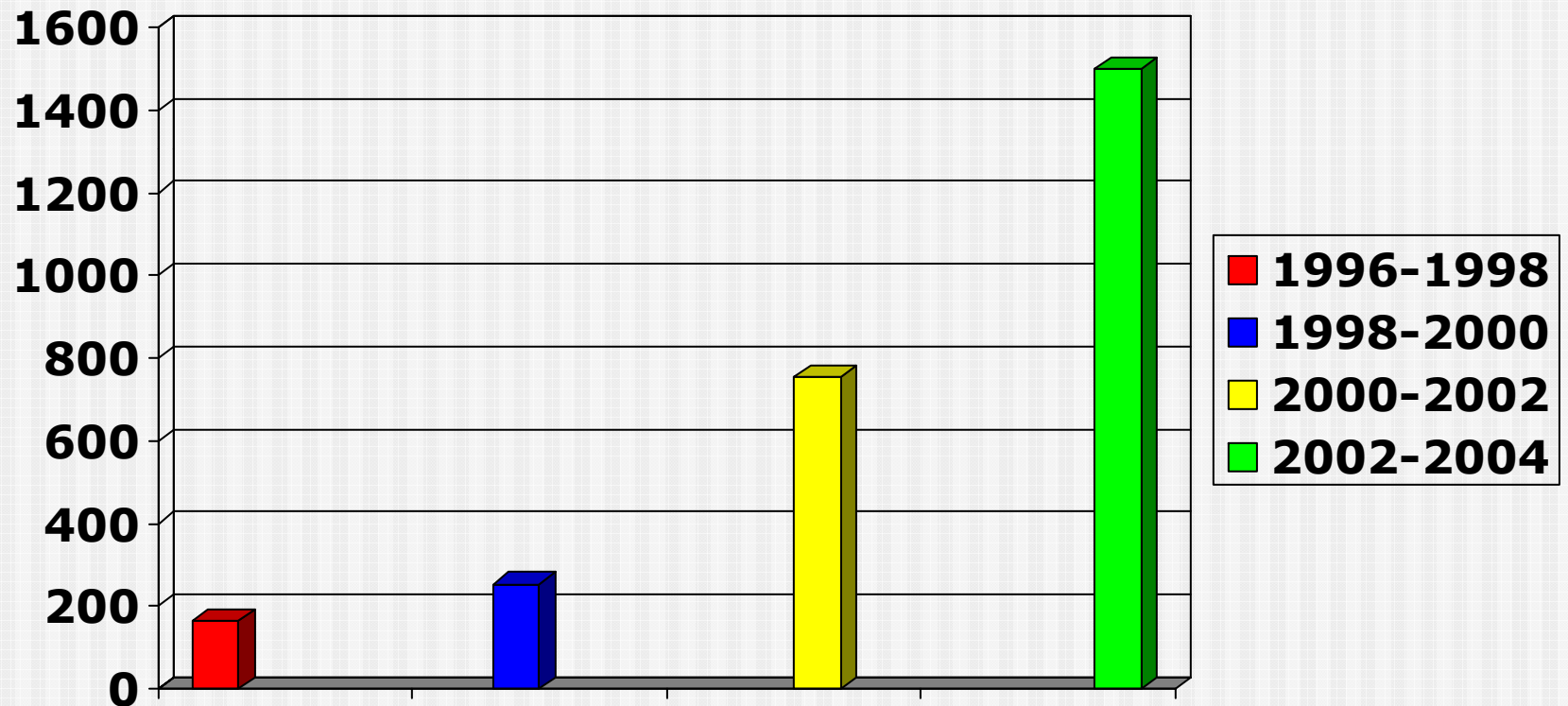
800 Level Student Credit Hours (Fall Only)



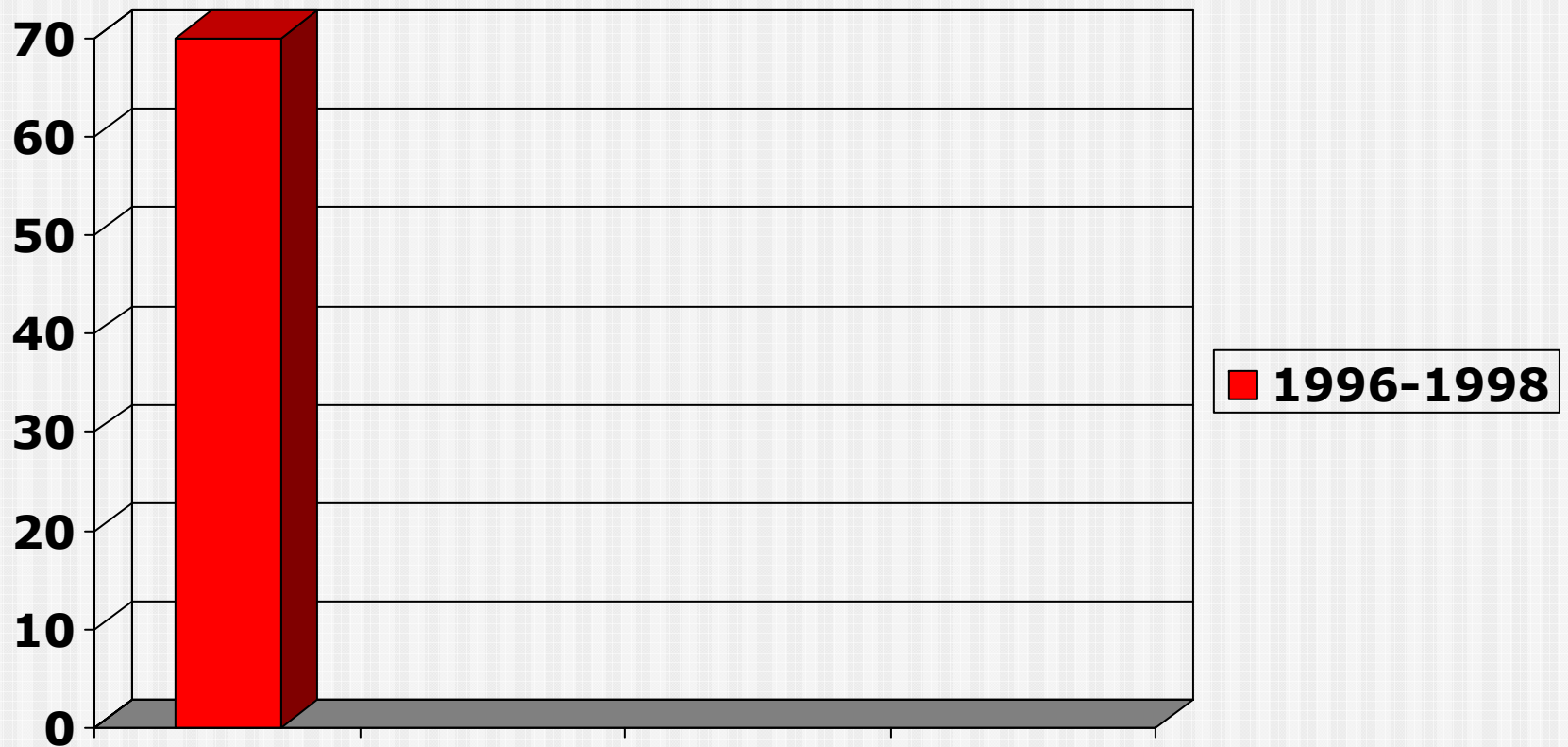
800 Level Student Credit Hours (Fall Only)



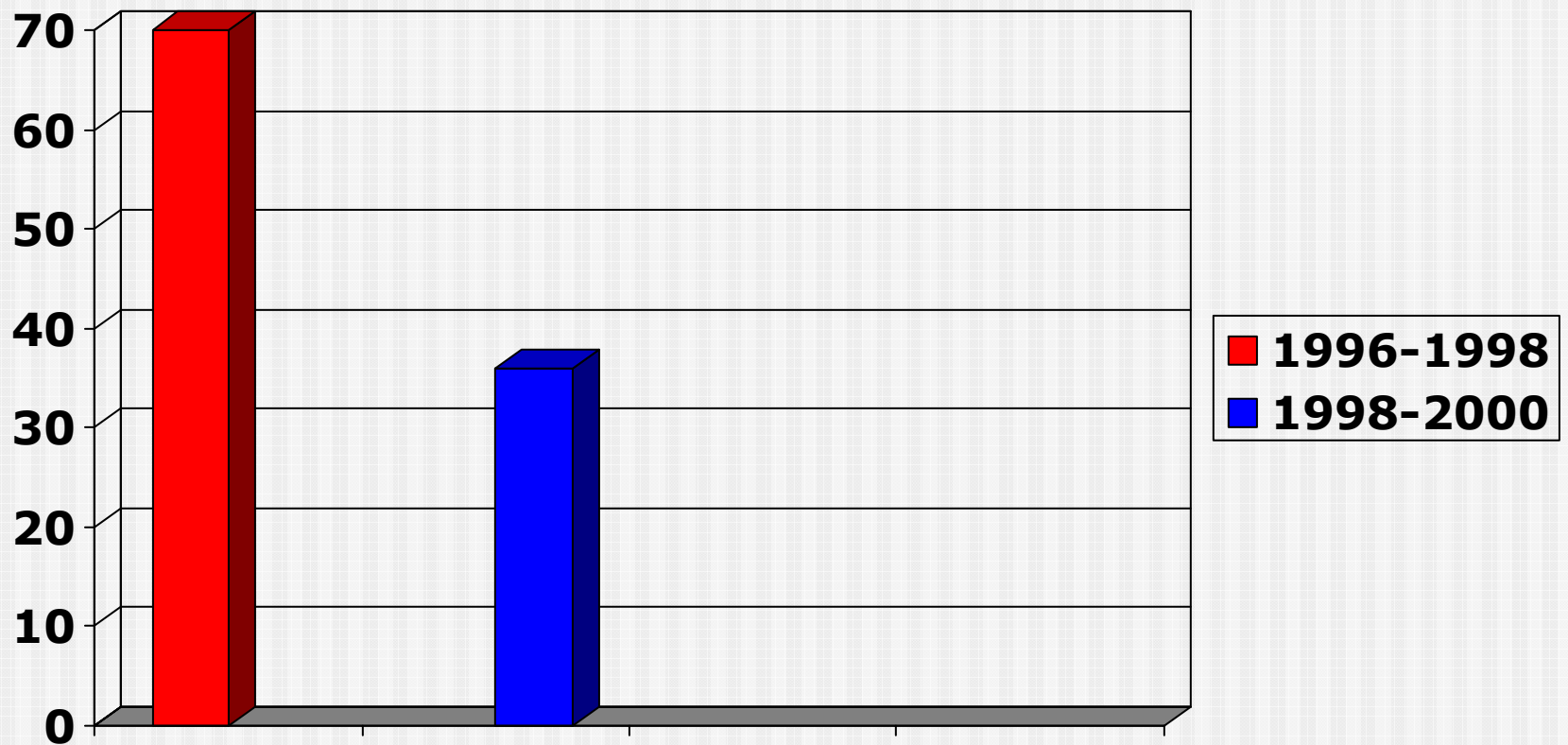
800 Level Student Credit Hours (Fall Only)



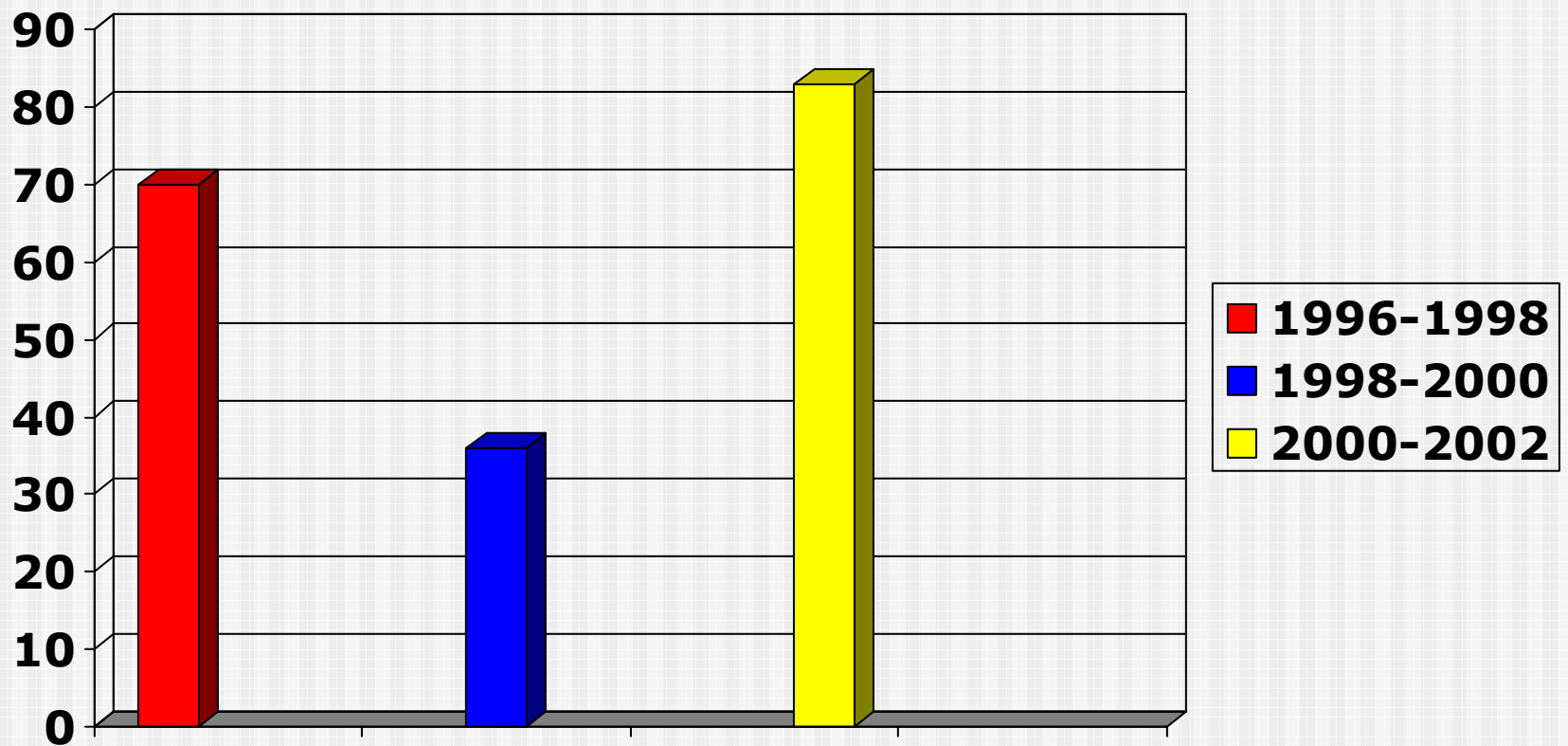
900 Level Student Credit Hours (Fall Only)



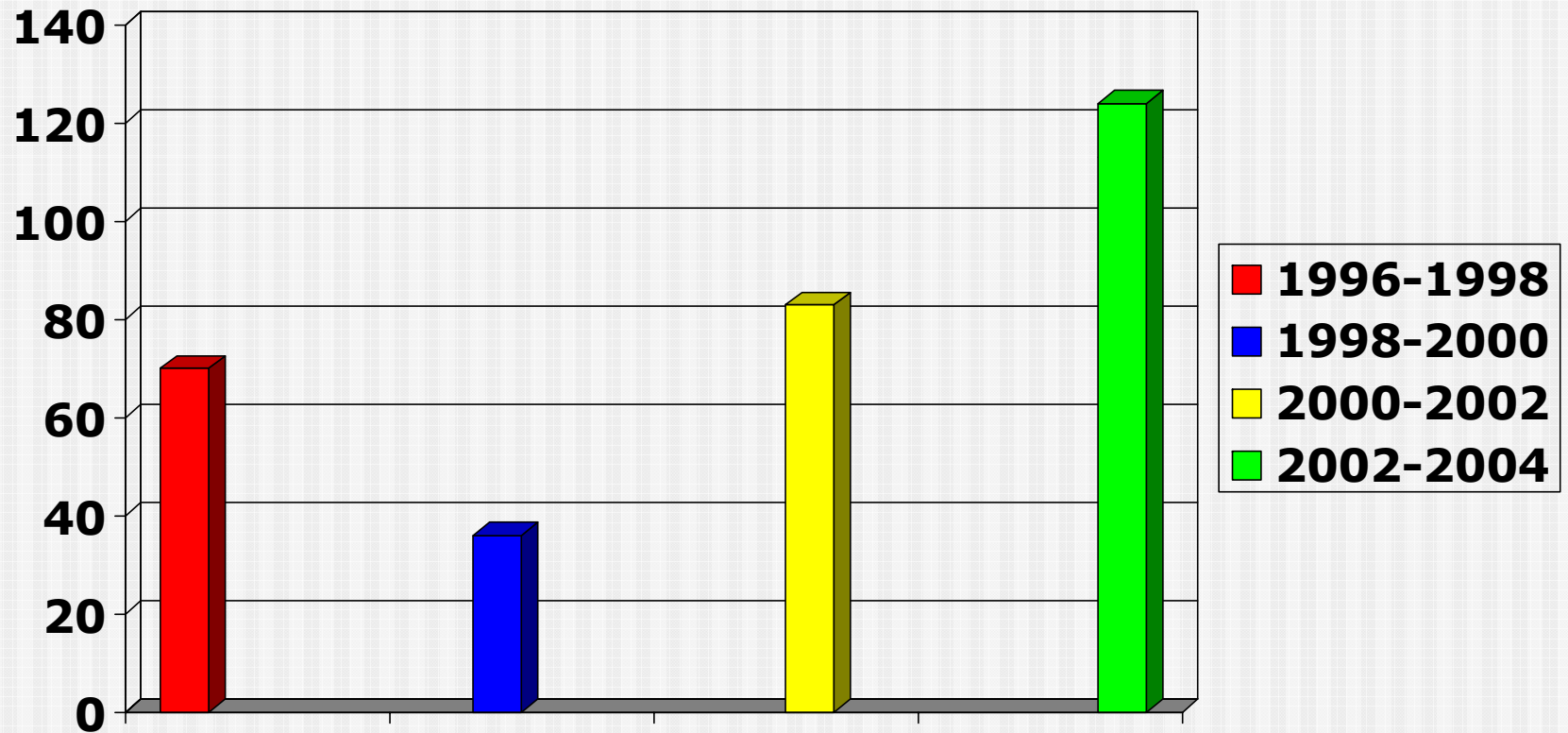
900 Level Student Credit Hours (Fall Only)



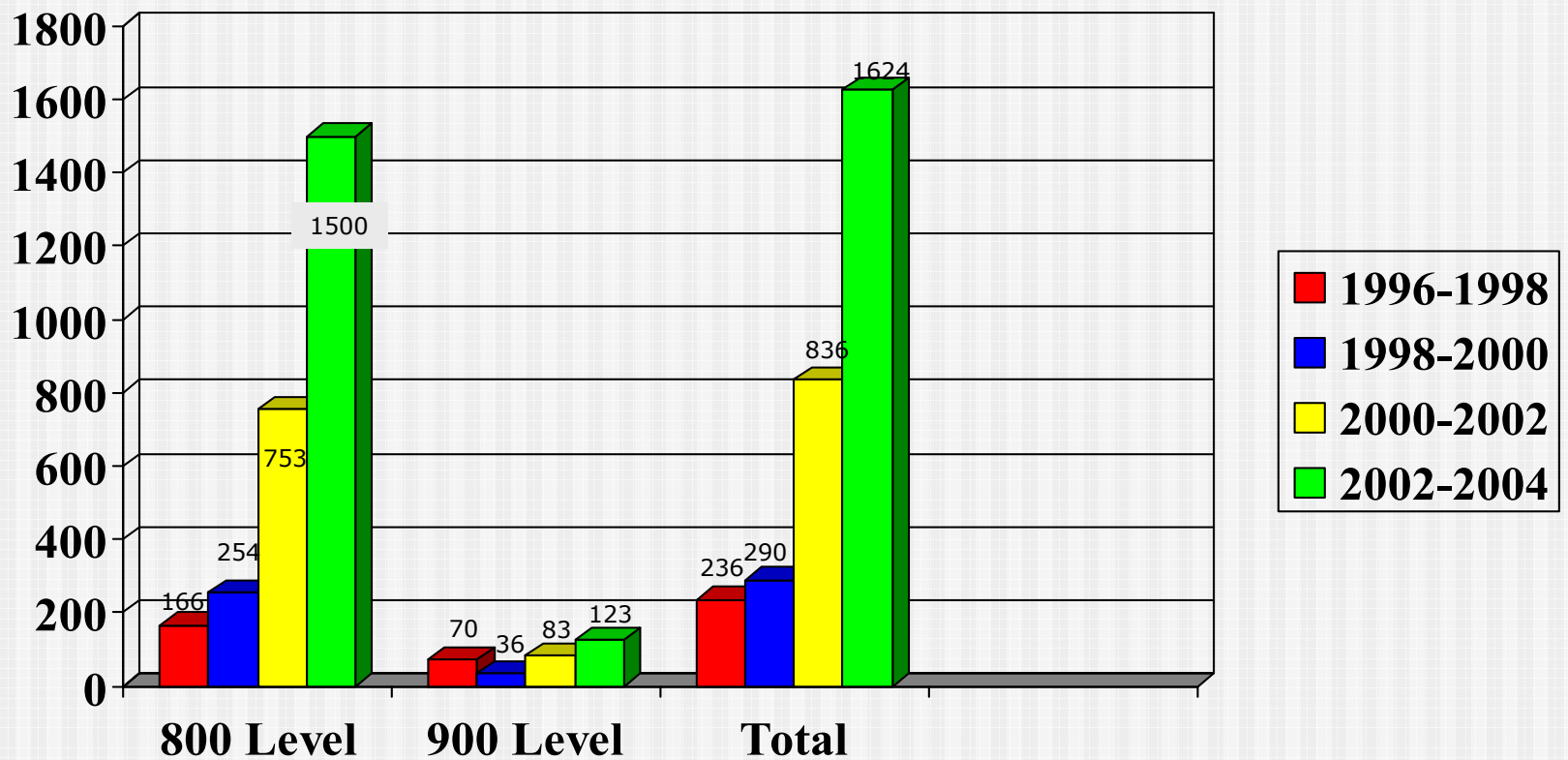
900 Level Student Credit Hours (Fall Only)



900 Level Student Credit Hours (Fall Only)

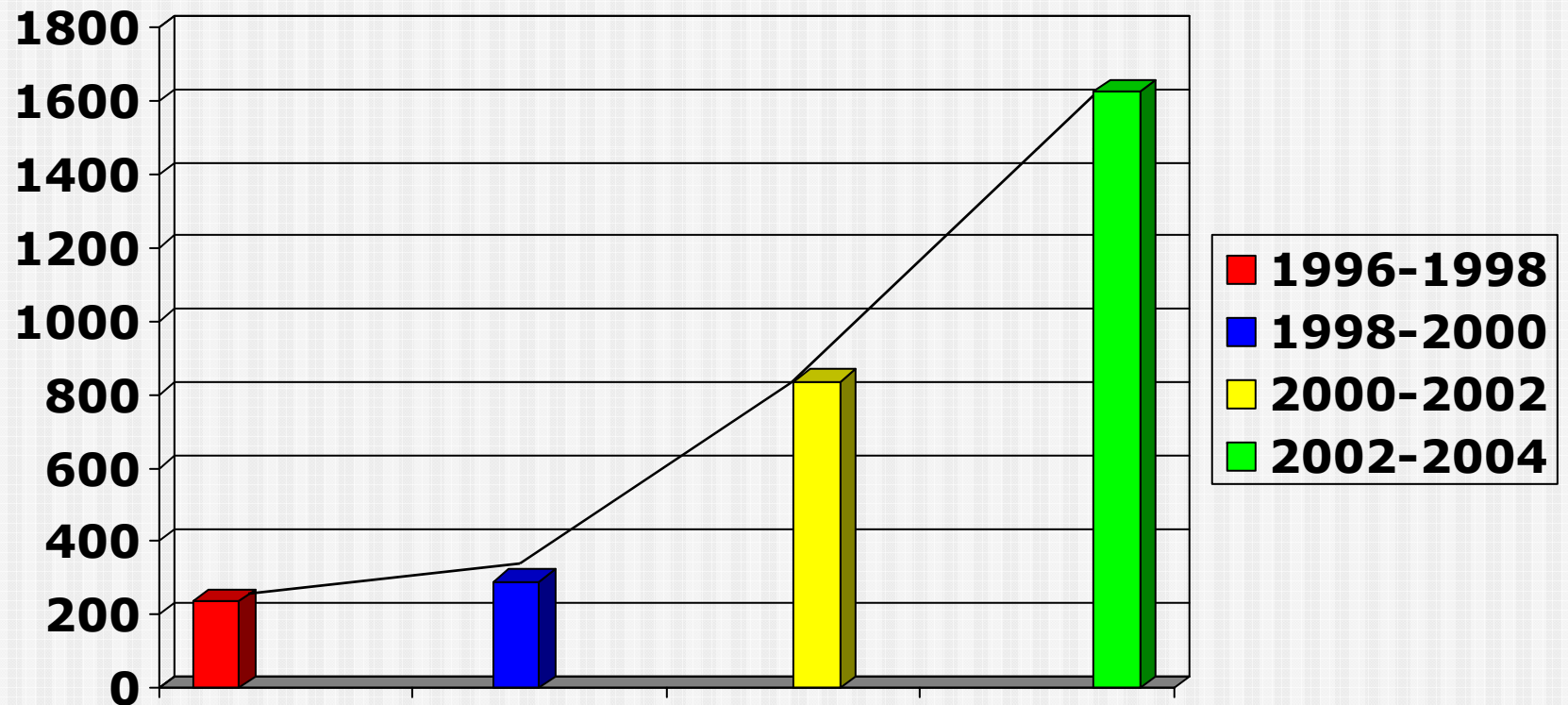


Graduate Student Credit Hours (Fall Only)



Total Graduate Student Credit Hours

(Fall Only)



Recent Significant Events

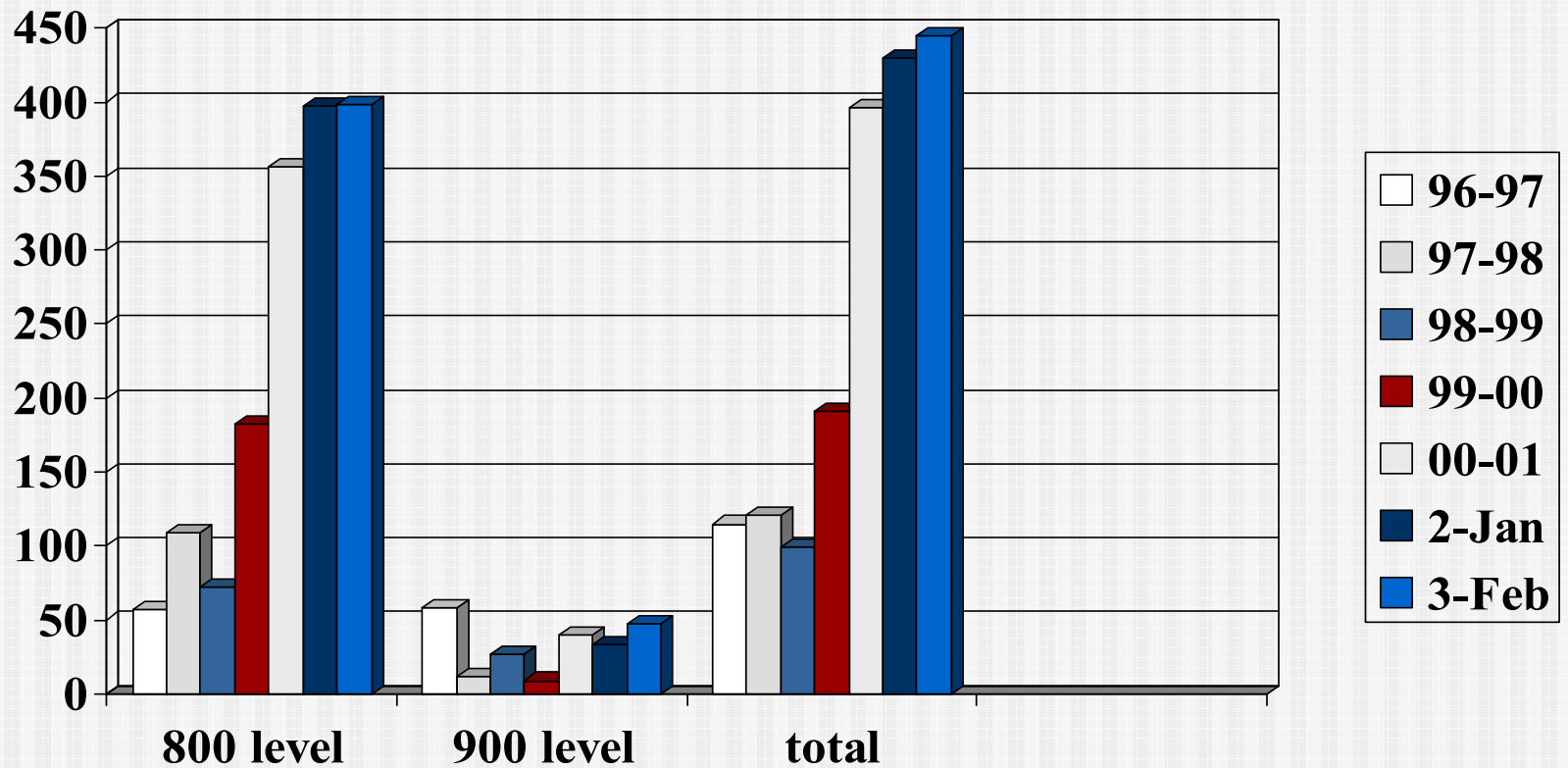
- Eleven new graduate courses approved.
- Eight graduate courses delivered via distance.
- Recognized excellence in teaching and research.

Master's Degree Changes

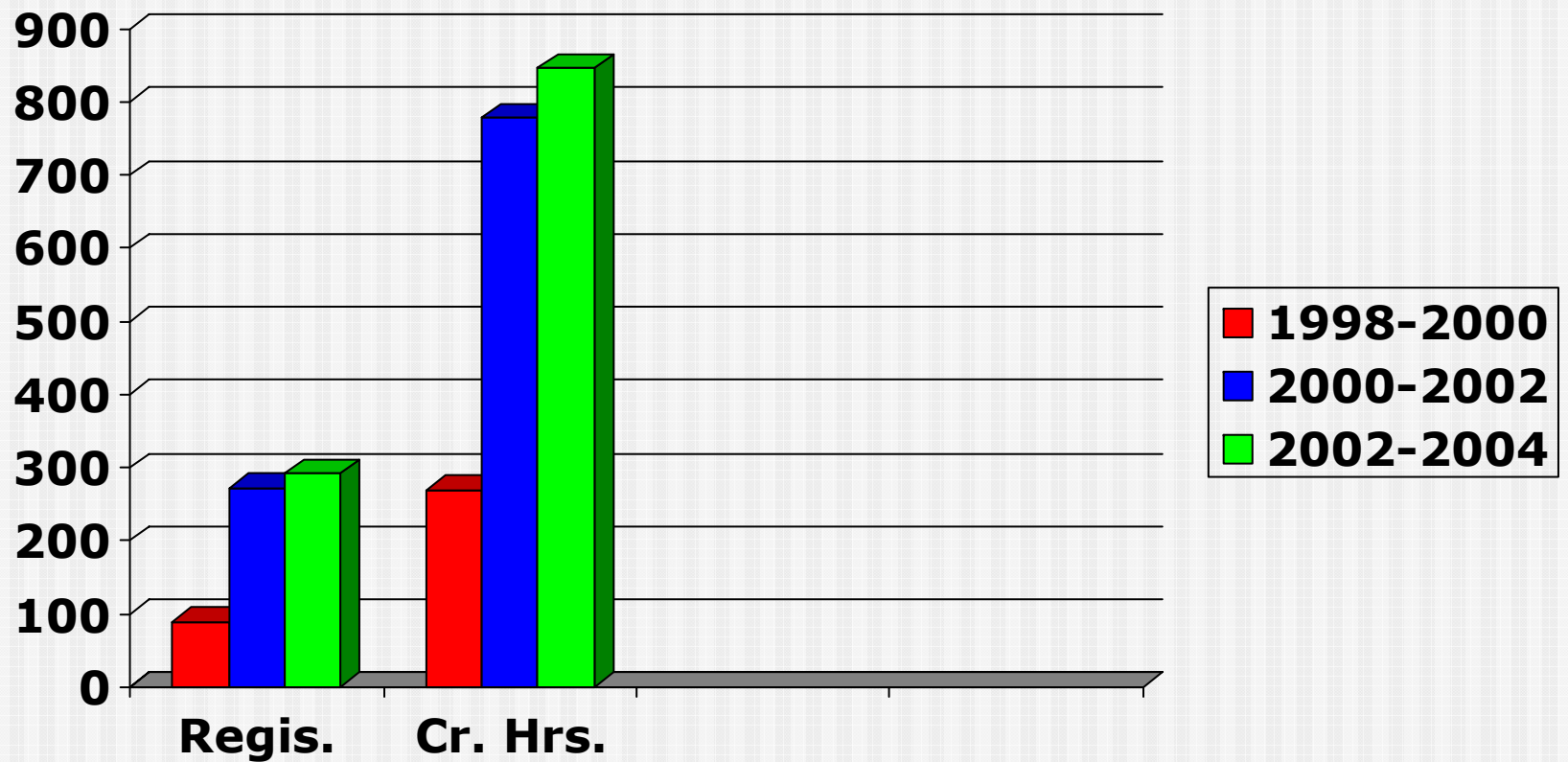
- New degree name: **Leadership Education.**
- Specializations/Emphasis areas:
 - Leadership Development
 - Teaching and Extension Education
 - Distance Education
 - Nutritional Outreach Education (joint w. Nutrition Science and Dietetics)

Graduate Student Credit Hours

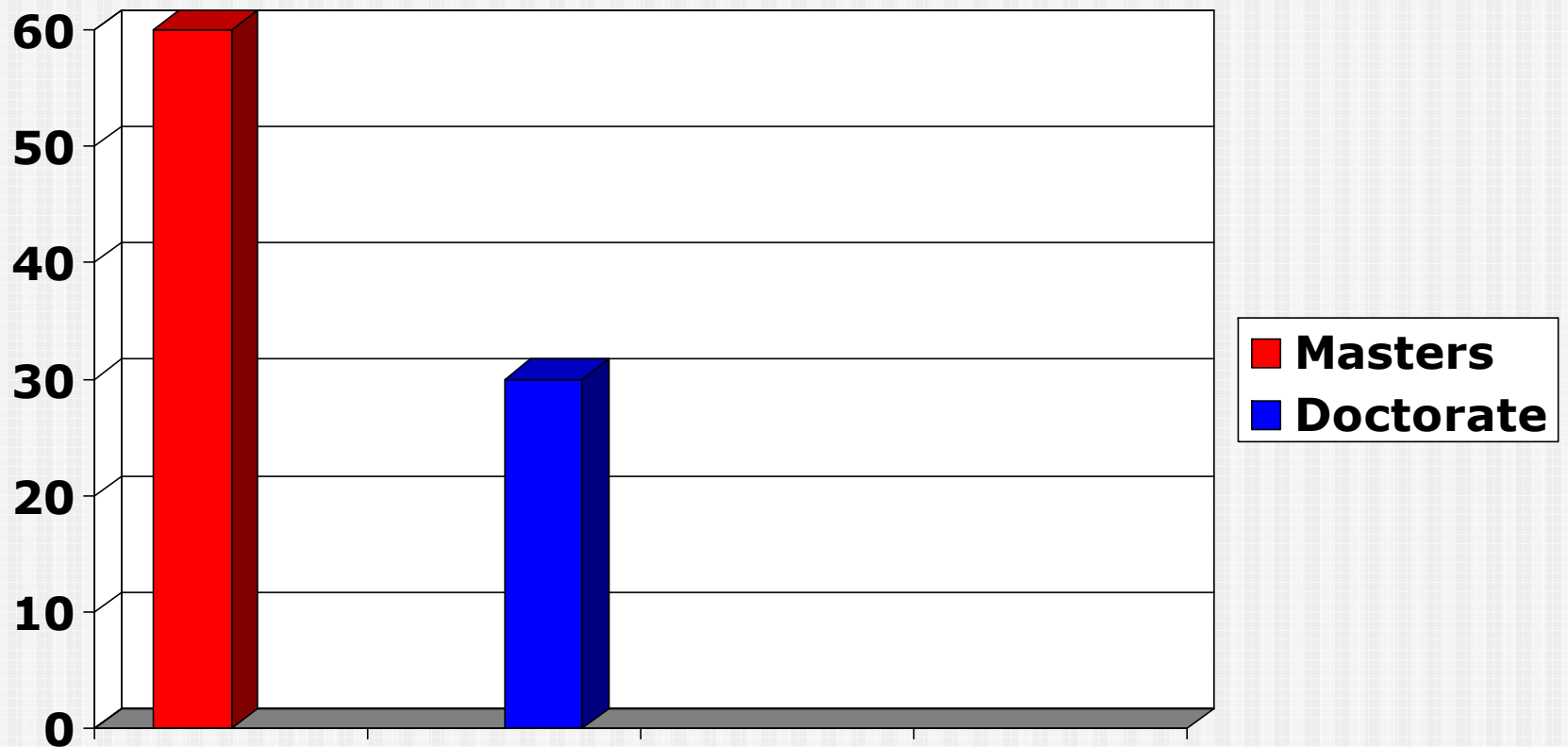
(Fall Only)



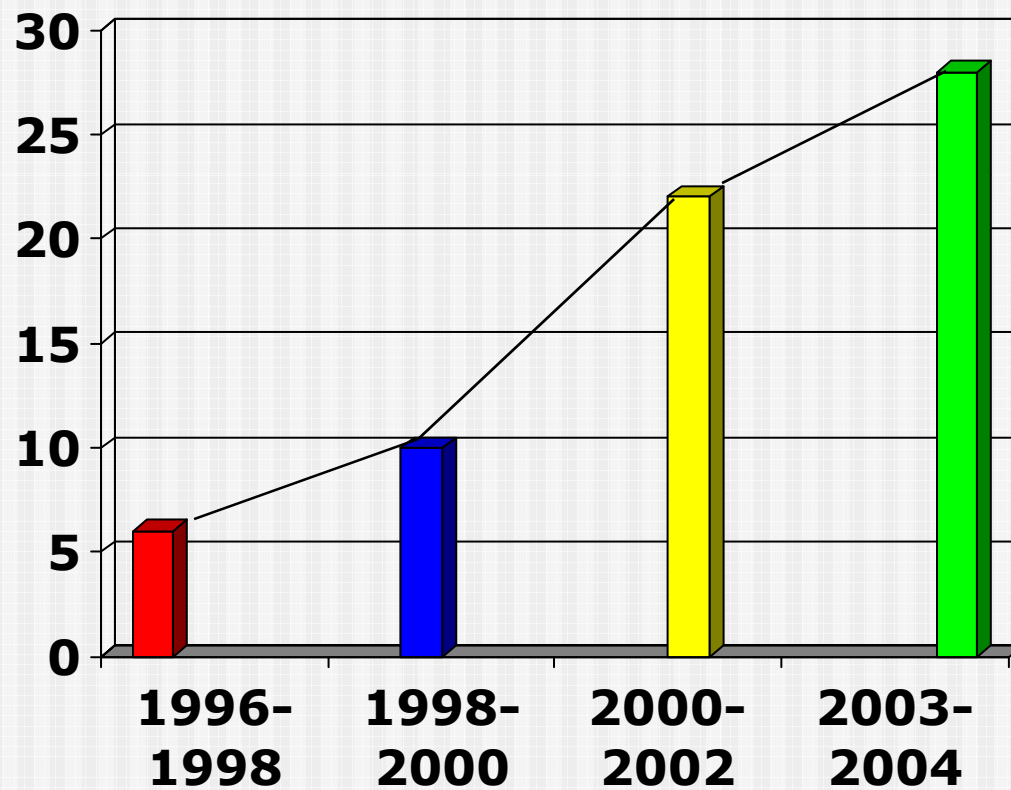
Class Registration/Credit Hours (Fall Semesters)



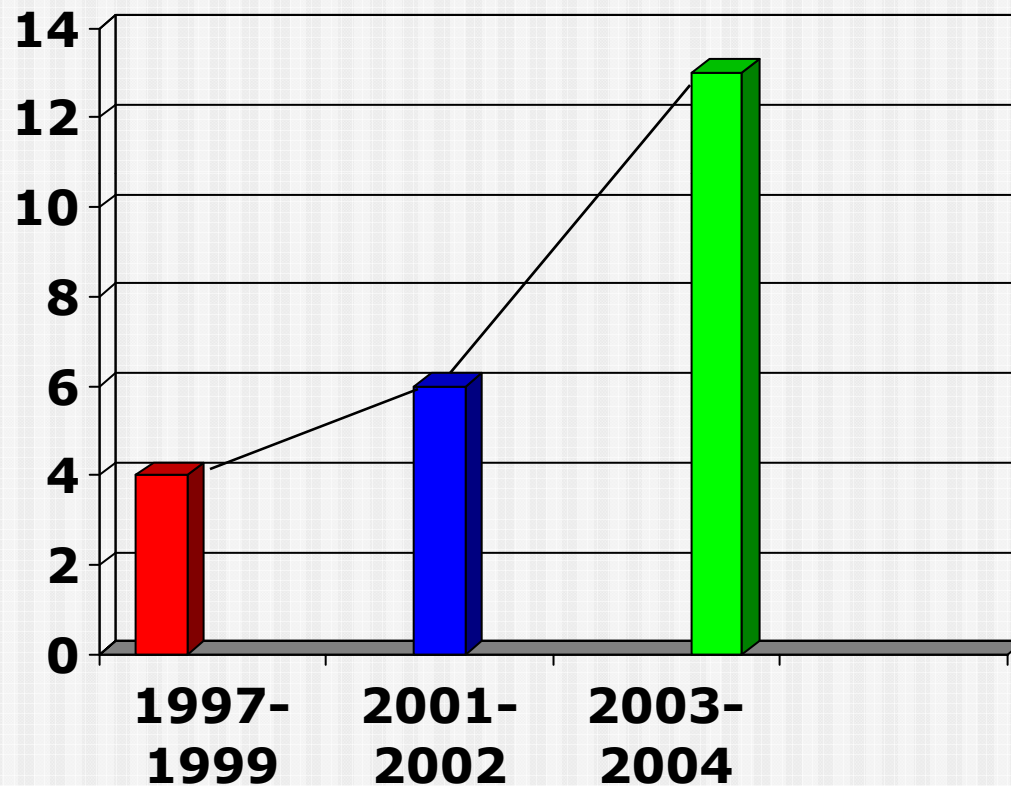
Current MS, PhD Advisees



Master Degrees Awarded



Doctoral Degrees Awarded



Areas Of Graduate Excellence

- **Rapid growth in number of Master and Doctorate students.**
- **Recognized for excellence in teaching and advising.**



Areas Requiring Improvement

- **Faculty staffing**
 - Difficult to meet teaching and advising needs.
- **Faculty time and development**
 - Curriculum development and program improvement difficult.
- **Cooperation with other units**
 - Need to seek avenues whereby resource conservation can be maximized.



Areas Requiring Improvement

- Increase international student numbers.
- Plan cohort groups for doctoral students.
- Leadership internships
 - An essential ingredient to help graduate students apply theory.
- Improve marketing of graduate programs.



Areas Requiring Improvement

- **More Courses needed at 900 doctoral level.**
 - Too few courses to meet demand of increases in doctoral students.
- **Cross-training of faculty**
 - Faculty development needed to increase flexibility in number of courses taught.
- **Teaching and Extension Specialization**
(Masters program).
 - Additional focus needed

Teaching-Learning Task Force

(Organized late summer, 2002)

What's happened so far?

- **Philosophy of Teaching Statement**
- **Paragraph that summarizes:**
 - (a) student characteristics,
 - (b) educational focus for department,
 - (c) students who will benefit from the program
- **Designing new Teaching and Extension Education Specialization**

Teaching-Learning Task Force (Organized late summer, 2002)

Researching on-line instruction guides to develop an on-line instruction philosophy

Identified a potential research focus area for improving higher education:

- Learning communities**

AgLEC Graduate Education and Research Committee approved a process to grant CEUs (Continuing Education Units) with the potential for earning graduate credit

The End

