

University of Nebraska - Lincoln

DigitalCommons@University of Nebraska - Lincoln

Intervention Summaries

Child Welfare Quality Improvement Center for
Workforce Development (QIC-WD)

January 2024

Supportive Supervision and Resiliency Ohio - Site Intervention Logic Model

Quality Improvement Center for Workforce Development (QIC-WD)

Follow this and additional works at: <https://digitalcommons.unl.edu/qicwdintervene>



Part of the [Industrial and Organizational Psychology Commons](#), [Performance Management Commons](#), [Public Policy Commons](#), [Social Policy Commons](#), [Social Welfare Commons](#), [Social Work Commons](#), and the [Training and Development Commons](#)

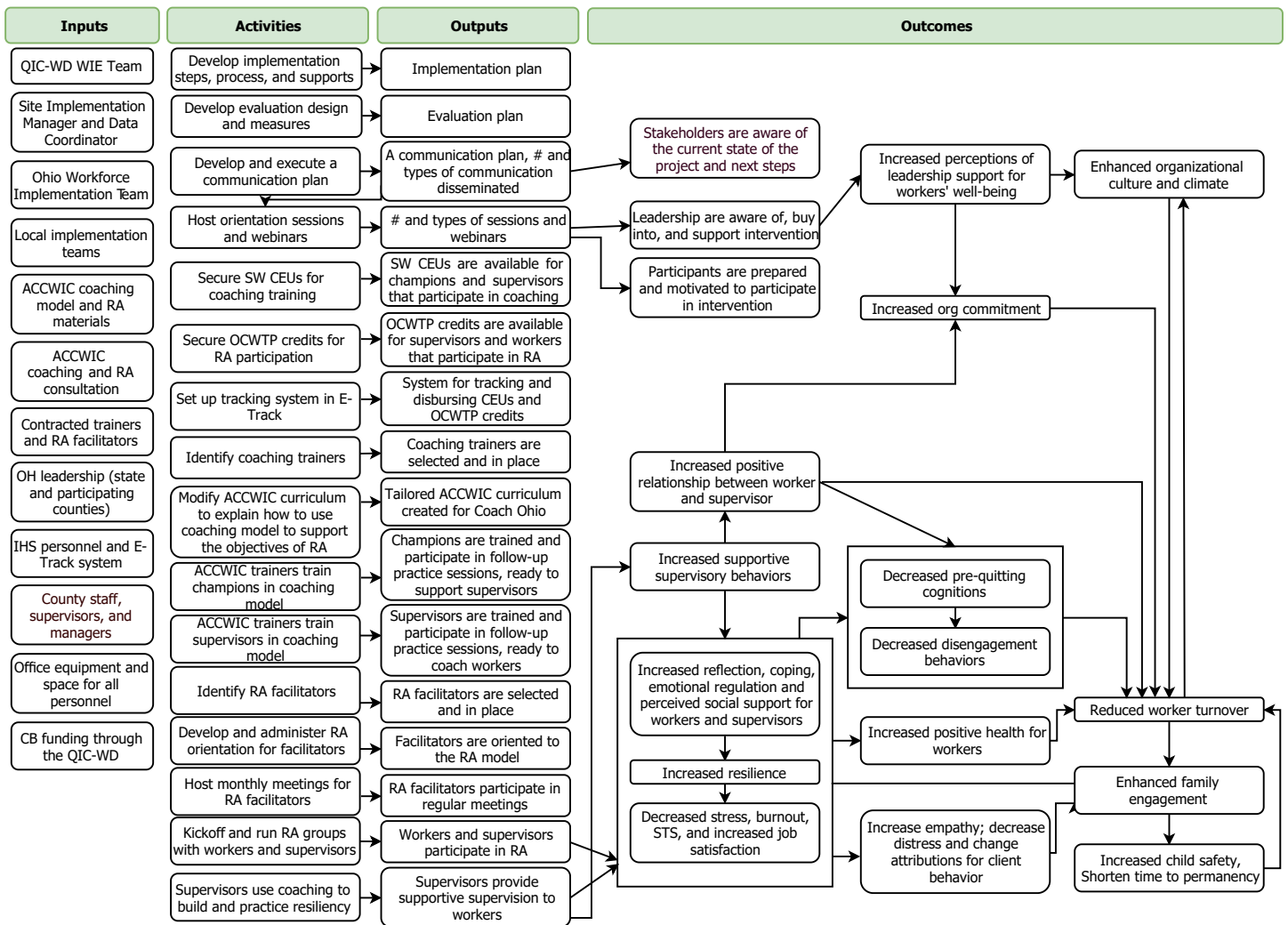
Quality Improvement Center for Workforce Development (QIC-WD), "Supportive Supervision and Resiliency Ohio - Site Intervention Logic Model" (2024). *Intervention Summaries*. 42.
<https://digitalcommons.unl.edu/qicwdintervene/42>

This Article is brought to you for free and open access by the Child Welfare Quality Improvement Center for Workforce Development (QIC-WD) at DigitalCommons@University of Nebraska - Lincoln. It has been accepted for inclusion in Intervention Summaries by an authorized administrator of DigitalCommons@University of Nebraska - Lincoln.

Supportive Supervision and Resiliency

OHIO DEPARTMENT OF JOB AND FAMILY SERVICES

Each QIC-WD site developed a logic model to serve as a visual representation of their selected intervention. All logic models included four main components: inputs, activities, outputs, and outcomes. Collectively, these demonstrate the resources and actions required to implement the program, as well as the associated result of changes anticipated through implementation of the program. The hypothesized relationships are represented by the pathways connecting the listed activities and anticipated outcomes. For more information, please see [Site Overview](#) and Evaluation Overview.



Potential Moderators: Worker Demographics, Personality, Working Models, Attitudes, Workload, Perceived Stress and Supports at Baseline; Supervisor Demographics, Personality, Working Models, Attitudes, Perceived Stress and Supports, Leadership Style and Behavior towards Worker During Intervention