

1997

1997-98 UNOPA Officers and Directors

Follow this and additional works at: <http://digitalcommons.unl.edu/unopadocs>

"1997-98 UNOPA Officers and Directors" (1997). *UNOPA Documents and Publications*. 51.
<http://digitalcommons.unl.edu/unopadocs/51>

This Article is brought to you for free and open access by the UNOPA-University of Nebraska Office Professionals Association at DigitalCommons@University of Nebraska - Lincoln. It has been accepted for inclusion in UNOPA Documents and Publications by an authorized administrator of DigitalCommons@University of Nebraska - Lincoln.

1997-98 Executive Officers

President

Marcia Rowley
W150 NH (0502)
2-3810 (Fax 2-7792)
e-mail mrowley@unlinfo.unl.edu

President-elect

Lola Young
~~1111 SeH (0622)~~ *CPH Res. Ed. 0622*
~~2-7173 (Fax 2-8769)~~ *2-1047 for 2-9293*
e-mail lyoung@unlinfo.unl.edu

Treasurer

Kim Freeman
271 NCCE EC (9100)
2-4681 (Fax 2-1901)
e-mail kfreeman@unl.edu

Recording Secretary

Barbara Homer
55 CRec (0232)
2-4767 (Fax 2-8080)
e-mail bhomer@unlinfo.unl.edu

Corresponding Secretary

Diane Sullivan
420 NH (0524)
2-3415 (Fax 2-8977)
e-mail dsulliva@unlinfo.unl.edu

Immediate Past President

Michele Strickler
407 Adm (0438)
2-8033 (Fax 2-9040)
e-mail mrs@unlinfo.unl.edu

1997-98 Board of Directors

Awards

Diane Wasser
~~275~~ *314* FyH (0922)
2-6251 (Fax 2-3460)
e-mail agec090@unlvm.unl.edu

Employee Concerns Director

Lorraine Moon
103 NRH EC (0844)
2-7558 (Fax 2-9599)
e-mail lmoon@unlinfo.unl.edu

Employee Concerns Co-Director

Edie Schleiger
124 Adm (0413)
2-2887 (Fax 2-2959)
e-mail ems@unlinfo.unl.edu

Hospitality

Carol Bom
1340 N 17th (0609)
2-2679 (Fax 2-9615)
e-mail cbom@unlinfo.unl.edu

Membership

Carol Wusk
211 AgH EC (0703)
2-3991 (Fax 2-5557)
e-mail coex017@unlvm.unl.edu

Nominating

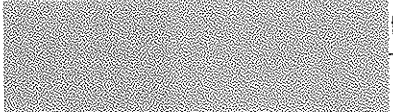
Carrie Meeske Holloway
Alex East (0417)
2-0726 (Fax 2-0670)
e-mail cmeeske@unlinfo.unl.edu

Professional Growth

Shirley Horstman
103 Whit (0849)
2-9417 (Fax 2-9323)
e-mail horstman@unlinfo.unl.edu

UNOPA Notes

Joan Frederick
114 BcH (0748)
2-7058 (Fax 2-7978)
e-mail SRML003 @unlvm.unl.edu



D. Director