

University of Nebraska - Lincoln

DigitalCommons@University of Nebraska - Lincoln

Michigan Bovine Tuberculosis Bibliography and Database

Wildlife Disease and Zoonotics

2010

Estimating the extent of spatial association of *Mycobacterium bovis* infection in badgers in Ireland

G. E. Kelly

University College Dublin, Belfield, Dublin, Ireland

G. E. McGrath

Centre for Veterinary Epidemiology and Risk Analysis, University College Dublin, Belfield, Dublin, Ireland

S. J. More

Centre for Veterinary Epidemiology and Risk Analysis, University College Dublin, Belfield, Dublin, Ireland

Follow this and additional works at: <https://digitalcommons.unl.edu/michbovinetb>



Part of the [Veterinary Medicine Commons](#)

Kelly, G. E.; McGrath, G. E.; and More, S. J., "Estimating the extent of spatial association of *Mycobacterium bovis* infection in badgers in Ireland" (2010). *Michigan Bovine Tuberculosis Bibliography and Database*. 51.

<https://digitalcommons.unl.edu/michbovinetb/51>

This Article is brought to you for free and open access by the Wildlife Disease and Zoonotics at DigitalCommons@University of Nebraska - Lincoln. It has been accepted for inclusion in Michigan Bovine Tuberculosis Bibliography and Database by an authorized administrator of DigitalCommons@University of Nebraska - Lincoln.

Estimating the extent of spatial association of *Mycobacterium bovis* infection in badgers in Ireland

G. E. KELLY¹*, G. E. McGRATH² AND S. J. MORE²

¹ School of Mathematical Sciences, University College Dublin, Belfield, Dublin, Ireland

² Centre for Veterinary Epidemiology and Risk Analysis, University College Dublin, Belfield, Dublin, Ireland

(Accepted 1 July 2009; first published online 5 August 2009)

SUMMARY

Mycobacterium bovis infects the wildlife species badgers *Meles meles* who are linked with the spread of the associated disease tuberculosis (TB) in cattle. Control of livestock infections depends in part on the spatial and social structure of the wildlife host. Here we describe spatial association of *M. bovis* infection in a badger population using data from the first year of the Four Area Project in Ireland. Using second-order intensity functions, we show there is strong evidence of clustering of TB cases in each the four areas, i.e. a global tendency for infected cases to occur near other infected cases. Using estimated intensity functions, we identify locations where particular strains of TB cluster. Generalized linear geostatistical models are used to assess the practical range at which spatial correlation occurs and is found to exceed 6 km in all areas. The study is of relevance concerning the scale of localized badger culling in the control of the disease in cattle.

Key words: Badger, disease clustering, GLGM, *Mycobacterium bovis*, spatial ranges.

INTRODUCTION

The badger (*Meles meles*) is a wildlife species endemic in Ireland and the UK and many studies have been devoted to the subjects of badger ecology and behaviour. *Mycobacterium bovis* (*M. bovis*) infection is common in badgers. Cattle are also susceptible to this infection and the association of badgers with TB transmission in cattle is well recognized, both in Ireland and the UK [1–3]. Aspects of the epidemiology of *M. bovis* in badger populations are well understood. It is known that badgers transmit the disease to each other and that there is spatial clustering of the disease in badgers [2, 4–6]. There is some understanding of badger home ranges from studies

such as O’Corry-Crowe *et al.* [7] and those in Smal [8] in Ireland and those by Tuytens *et al.* [9] and Woodroffe *et al.* [10, 11] in the UK. However, while these studies have tracked badgers’ social groupings and home ranges, less is known about the extent of badger ranges. This knowledge is particularly important in the understanding of disease transmission dynamics in the badger population and ultimately its control both in cattle and badgers. The main aim of this study is to estimate, using geostatistical methods, practical spatial ranges at which correlation of disease occurs in badger populations in Ireland.

METHODS

Study populations

The data for this study are drawn from the Four Area Project (FAP), a formal badger removal project

* Author for correspondence: Dr G. E. Kelly, Room L537, School of Mathematical Sciences, University College Dublin, Belfield, Dublin 4, Ireland.
(Email: gabrielle.kelly@ucd.ie)

undertaken in Ireland from September 1997 to August 2002, to assess the effect of badger culling on the incidence of bovine tuberculosis (TB). The study design and its results are published in detail elsewhere [1]. Briefly, the FAP was conducted in matched removal and reference areas (average area of 245 km²) in four counties in Ireland: Cork, Donegal, Kilkenny and Monaghan. In addition, where natural barriers were absent, 'buffer areas' were created, up to 6 km in width, at the boundary of each selected removal area. These buffer areas will be referred to as outer removal areas. Badger removal was intensive and proactive throughout the study period in the removal areas (inner and outer), but reactive (culling only those badgers spatially associated with farms that had experienced severe TB outbreaks in cattle and where badgers were implicated) in the reference areas. Only cattle herds that had all their land located in the study areas are included in analyses here.

Prior to the study, all fields and hedgerows on participating farms were examined for badger setts. 5680 setts were found but only a fraction were active. During the course of the study, badgers were culled from 929 setts, 127 from the reference areas and 802 from the removal areas. TB status of badgers was based on culture results [12] and a sett was deemed positive if any badger captured therein was positive. All badgers in a sett were captured. Of these setts, 574 were negative, 338 were positive and 17 had unknown status. The percentage of positive setts in the removal areas ranged from 27% in Donegal to 42% in Cork. In the reference areas, the status of setts is unknown for the most part as little badger culling occurred there. Therefore, reference areas were not included in the current analyses.

Records were complete for 2359 badgers culled in the removal areas regarding the date of capture, geographical area and specific sett from where the badgers were snared. The TB status was known for 2305 of these. The sett identifications used were based on surveys conducted as part of the FAP, and the geographical position of the sett at which badgers were caught was recorded in a GIS database. Our analyses were restricted to the first year of the FAP, September 1997 to August 1998, during which two culls were carried out in each county. The dates of the last culls in that year were in late May or June, varying with area. There were a total of 1113 badgers culled in the removal areas in the first year of the cull. Of these, 15 were cubs, i.e. badgers born in the previous 12 months, 1069 were adults (157 of which were

yearlings) and 29 badgers with no age data recorded. Badgers without age data were excluded from the analysis, as were those without sex data or infection status and the 15 cubs (74 in total). We thus consider for study, the total of 1039 adult badgers culled, 304 in the outer removal areas and 735 in the inner removal areas for which the infection status, sex and age were known. The data are displayed in Table 1. Plots showing the locations of infected and non-infected badgers in the four counties are shown in Fig. 1. Of the 209 infected badgers under study, strain type information was available on 204. In all counties several strain types of *M. bovis* were found to infect badgers. Table 2 shows the distribution of each strain type for badgers by area.

Statistical methods

Logistic regression was used to compare prevalence of TB across areas and between the sexes.

Second-order intensity functions

K-functions and second-order intensity functions were used to explore spatial associations of *M. bovis* infections in badgers. *K*-functions arise from the theory of spatial point processes [13] and describe the distribution function of distances (*d*) between points (badger sett geographical locations) while second-order intensity functions describe the corresponding density function. We use distances based on nearest-neighbour distances badger–badger. *K*-functions for infected and non-infected badgers are estimated separately and the difference \hat{D} used to indicate clustering of disease [14]. Large values of *D* indicate clustering. Diggle & Chetwynd's [14] random labelling hypothesis is used that conditions on the set of all locations. The null hypothesis of no association is that each location is equally likely to be infected or uninfected. Data from badgers trapped at the same location (which shared the same distances to the nearest cattle herd) were condensed. A single location could contribute data both as TB infected (if one or more infected badgers were trapped there) and as uninfected (if one or more uninfected badgers were trapped there).

We evaluate the null sampling distribution of $\hat{D}(d)$ by carrying out 99 Monte Carlo simulations in each of which disease labels are randomly assigned to locations. In each simulation the function $\hat{D}(d)$ is recalculated. The upper 97.5 and lower 2.5 percentiles of the simulated $\hat{D}(d)$ values at each distance *d* are

Table 1. Summary statistics describing badgers captured in the initial 12-month period of proactive culling in the removal areas of the Four Area Project

| | Area | | | | Total |
|--|----------|----------|----------|----------|----------|
| | Cork | Donegal | Kilkenny | Monaghan | |
| No. of badgers culled (%) | | | | | |
| Male | 185 (47) | 84 (43) | 93 (39) | 85 (40) | 447 (43) |
| Female | 206 (53) | 110 (57) | 147 (61) | 120 (60) | 592 (57) |
| Total | 391 | 194 | 240 | 214 | 1039 |
| No. of infected badgers (%) | 109 (28) | 27 (14) | 31 (13) | 43 (20) | 209 (20) |
| No. of <i>M. bovis</i> strains | 13 | 5 | 8 | 11 | |
| Area (km ²) | 307 | 226 | 313 | 368 | 1214 |
| Removal rate per km ² /year | 1.27 | 0.86 | 0.77 | 0.58 | 0.86 |
| Infection rate per km ² /year | 0.36 | 0.12 | 0.10 | 0.12 | 0.17 |

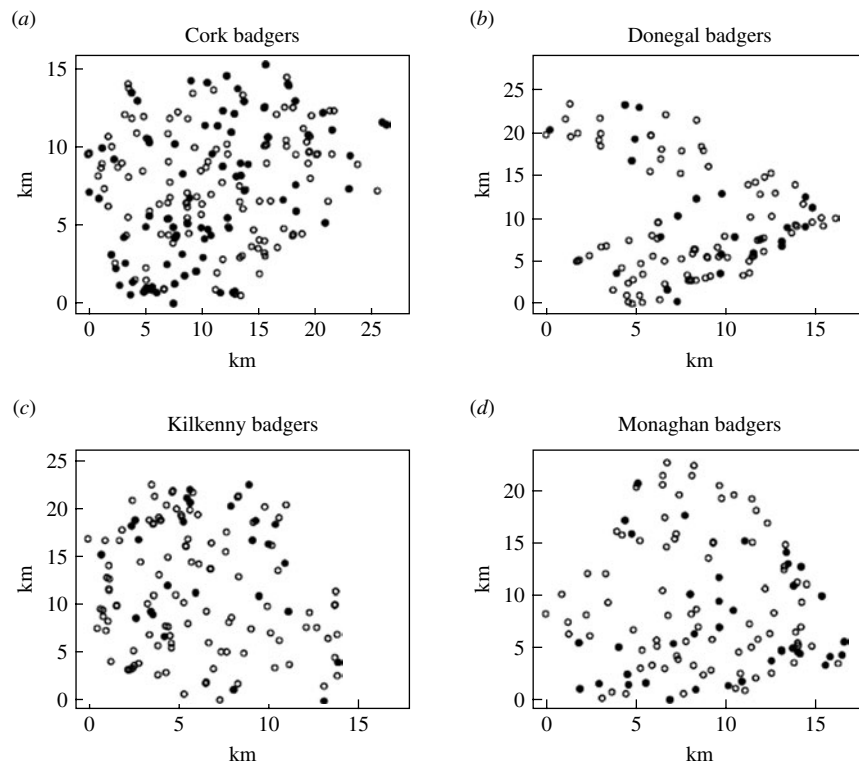


Fig. 1. Plots showing the locations of infected (●) and non-infected (○) badgers in the removal areas of the four counties.

thus obtained. Differences between second-order intensities ID are also examined and upper and lower percentiles for these differences at each distance d are calculated using Monte Carlo simulation, as above. Here second-order intensity functions were calculated using K -function derivatives based on a bandwidth of 1 km, i.e. $ID(d) = K(d+1) - K(d)$. Difference functions (D , ID) outside the upper confidence limit indicate clustering of infection. An alternative analysis of these data using the methods of Woodroffe *et al.* [2] is

presented in Kelly *et al.* [6], for comparison purposes with that study.

Spatial variation in risk-kernel probability maps

In the case of strain data we examined whether badgers with the same strain clustered and if so where they clustered. By spatial variation in risk we mean the strain (first-order) intensity functions are not proportional over the domain D of interest. As in Diggle & Ribeiro [15], the pattern of strains is

Table 2. *Distribution of M. bovis strains in badgers captured in the initial 12-month period of proactive culling in the removal areas of the the Four Area Project*

| <i>M. bovis</i> strain | Cork | Donegal | Kilkenny | Monaghan |
|------------------------|------|---------|----------|----------|
| A1A1A | 5 | 4 | 6 | 9 |
| A1A1F | 0 | 0 | 0 | 1 |
| A1A3A | 32 | 0 | 0 | 0 |
| A1A5A | 2 | 18 | 1 | 1 |
| A1E2A | 0 | 0 | 0 | 1 |
| A2A1B | 6 | 0 | 0 | 0 |
| A4A1H | 0 | 0 | 6 | 0 |
| B1C1C | 0 | 0 | 0 | 23 |
| C1H1J | 48 | 0 | 10 | 0 |
| Other | 15 | 5 | 6 | 5 |
| Total | 108 | 27 | 29 | 40 |

assumed to be generated by a multivariate Poisson process with intensities $\lambda_k(x)$ corresponding to strain type k at each location x . Then the probability a case at location x will be of type j , conditional on there being one of the s strain types at x , is

$$p_j(x) = \lambda_j(x) / \sum_{k=1}^s \lambda_k(x).$$

We say there is spatial segregation if the area can be partitioned approximately into subregions where one strain type predominates, i.e. complete segregation is if at each x in the subregion, $p_j(x) = 1$ for one of the j . We used the kernel regression estimator of p_j given in Diggle & Ribeiro [15] where the smoothing parameter for p_j is chosen by cross-validation. An *ad-hoc* statistic for a Monte Carlo test of clustering is then given by

$$T = \sum_j \sum_{x \in D} (\hat{p}_j(x) - \bar{p}(x))^2 \quad \text{where} \quad \bar{p}(x) = \sum_j \hat{p}_j(x).$$

To obtain the significance level of this test statistic, 999 Monte Carlo simulations were done where strain types were randomly assigned to locations but the frequency of strain occurrence was preserved. The estimated type-specific probability surfaces, $\hat{p}_j(x)$ vs. x , were plotted for each county using ArcView 9.2 (ESRI Inc., USA). Distance calculations related to strain types were done by two methods. In method 1, each badger contributed one observation for each strain type. In method 2, a capture location contributed one observation for each strain type as multiple strain types were occasionally found at the same location (see Table 1). As can be seen in Table 2, the number of cases of most strain types is too small for

the application of non-parametric smoothing methods. Therefore, similar to the approach of Diggle *et al.* [16], analysis was restricted to the locations of the two main strain types in each county and in the case of Kilkenny the three main strain types.

Generalized linear geostatistical models (GLGMs)

Because second-order intensity function methods and kernel spatial maps do not take any covariates other than spatial location into account in any formal way, we also present GLGM analyses of these data. These models extend those of the logistic in that geographical information regarding badger sett locations are utilized in the models. We estimated practical spatial ranges at which clustering of disease occurs with these models. A separate model was constructed for the removal area of each county with infection status of the sett as the outcome variable. The covariates in the models are distance to the nearest cattle herd, log of herd size, restriction status of the herd in that year (1 = restricted, 0 = not restricted), previous history of TB in the herd (1 = yes, 0 = no) and interactions between these variables. In addition a random spatial effect u_i is included in the logistic models, identified by the geographical coordinates s_i of the i th badger sett.

The spatial correlation matrix S

The isotropic covariance models we considered for the spatial random effect have the form

$$\text{Var}(u_i) = \sigma^2$$

$$\text{Cov}[u_i, u_j] = \sigma^2 [f(d_{ij})],$$

where d_{ij} denotes the distance between s_i and s_j . The following models were fitted:

- (1) Spherical

$$f(d_{ij}) = [1 - 1.5(d_{ij}/\rho) + 0.5(d_{ij}/\rho)^3] \times I[d_{ij} < \rho].$$

- (2) Exponential

$$f(d_{ij}) = \exp(-d_{ij}/\rho).$$

- (3) Gaussian

$$f(d_{ij}) = \exp(-d_{ij}^2/\rho^2).$$

For these models, the parameter ρ refers to the geostatistical parameter ‘range’. In the exponential and Gaussian models covariances reach zero only asymptotically, thus the practical range is defined as the distance at which the correlations fall below 0.05. For

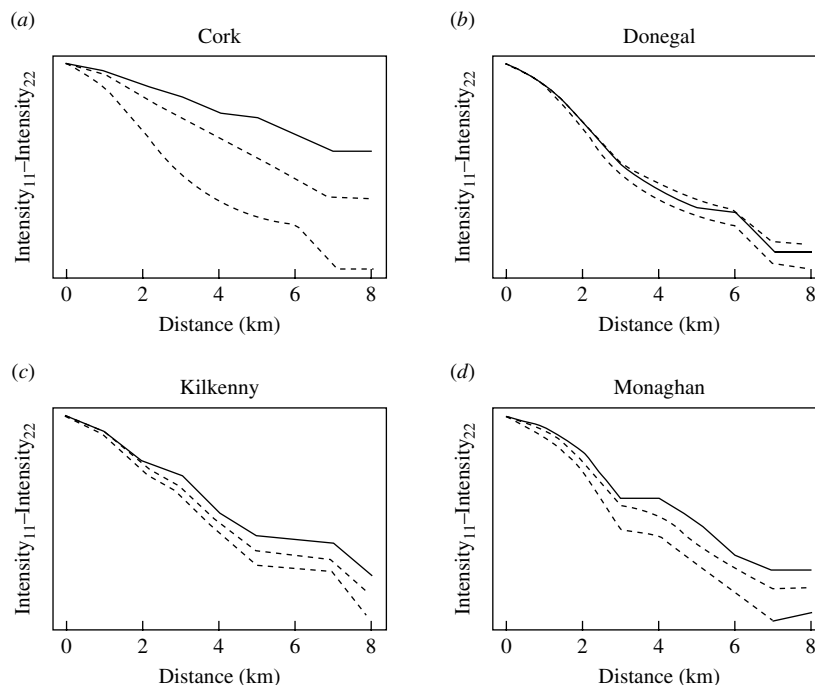


Fig. 2. Differences in second-order intensity functions of infected badgers to infected badgers and uninfected badgers to uninfected badgers in the removal areas of the Four Area Project. The dashed lines represent the upper 97.5 and lower 2.5 percentiles of simulated difference values at each distance d . Badger locations were condensed in the second-order intensity functions in that a single location could contribute data both as tuberculosis infected (if one or more infected badgers were captured there) and as uninfected (if one or more uninfected badgers were captured there).

the spherical model ρ equals the range; for the exponential model the practical range is 3ρ ; in the Gaussian model it is $\sqrt{3}\rho$. A likelihood ratio type test is used to compare models that are nested, i.e. a model with no spatial correlation $\rho=0$, to one with $\rho\neq 0$ (with critical value $\chi^2_{2\alpha}$ for a size- α test as in Lee *et al.* [17, p. 192]). Competing covariance models are compared using Akaike's Information Criterion [18]. Statistical calculations were performed using SAS software (SAS Institute, USA) and R [19].

RESULTS

Prevalence of *M. bovis* infection

The overall infection prevalence in adult badgers was 20%, ranging from 13% in Kilkenny to 28% in Cork. Of the 1039 adults studied, 448 (43.0%) were male. The adult sex ratio was female-biased in all counties (Table 1). Table 1 presents the prevalence of *M. bovis* infection in both male and female badgers. Using a logistic regression analysis we found prevalence varied substantially between areas ($P<0.001$). There was no significant effect of sex or interaction between sex and area on the risk of *M. bovis* infection.

Thus prevalence was the same for the sexes within each area and for the sexes overall.

Clustering of infection using second-order intensity functions

The badger data consisted of 830 uninfected badgers at 491 locations and 209 infected badgers at 167 locations. Infected and uninfected badgers had comparable opportunities for contact with cattle. In the 12 months of the first year of badger culling, distances to the nearest herd were similar for infected and uninfected badgers ($P=0.56$, Wilcoxon rank sum test), the median distance was 0.55 km for uninfected badgers and 0.56 km for infected badgers. Figure 2 displays the difference in second-order intensity functions ($ID(d)$) for infected and uninfected badgers for each of the four areas. The figures show significant evidence of clustering of infection in badgers at all distances up to 8 km in counties Cork, Kilkenny and Monaghan. In Donegal, there was no significant difference in second-order intensity functions. When the number of Monte Carlo simulations for generating the confidence limits was increased from 99, results altered little, but computation time was greatly

increased. Differences based on K -functions are not shown as these are less informative.

Associations between strain types of *M. bovis* in badgers

Figure 3 shows the estimated type-specific probability surfaces for the main strain types in Cork, Donegal and Kilkenny using distance method 1 described above. The P values associated with Diggle's test of spatial segregation were, Cork ($P < 0.001$), Donegal ($P = 0.128$), and Kilkenny ($P < 0.001$). In Monaghan, the estimated smoothing parameter was so large that the estimated probability surface is constant and there is no spatial segregation ($P = 1.0$).

GLGM results for removal areas

None of the covariates, distance to the nearest cattle herd, log of herd size, restriction status of the herd in that year, previous history of TB in the herd and interactions between these variables were significant in the models for any area. The exponential spatial covariance structure fitted best in all areas. The practical spatial correlation range was 4.47 km in Cork, 14.45 km in Donegal and 7.69 km in Monaghan. The spatial term was significant by the $\chi^2_{2\alpha}$ test: Cork ($P = 0.03$), Donegal ($P = 0.02$) and Monaghan ($P = 0.007$). Examination of empirical variograms of the residuals from the models found no further spatial structure, indicating model adequacy. In Kilkenny, the exponential model did not give a positive definite covariance structure. A spherical correlation model did not give sensible answers in any county, but when the binary response is assumed Gaussian and a linear geostatistical model fitted, the estimated true range was 6.33 km in Cork, 10.44 km in Kilkenny, 18.7 km in Donegal and 14.66 km in Monaghan from this model.

DISCUSSION

Statistical issues

A second-order intensity function $I(d)$ is essentially the density function associated with a K -function as outlined previously [20]. Using second-order intensities (rather than K functions) has the advantage of showing the exact distances at which clustering of disease occurs. We note the difference in K -functions $D(d)$ (and thus also ID functions) tends to a positive constant as $d \rightarrow \infty$ [20], typical of clustered point

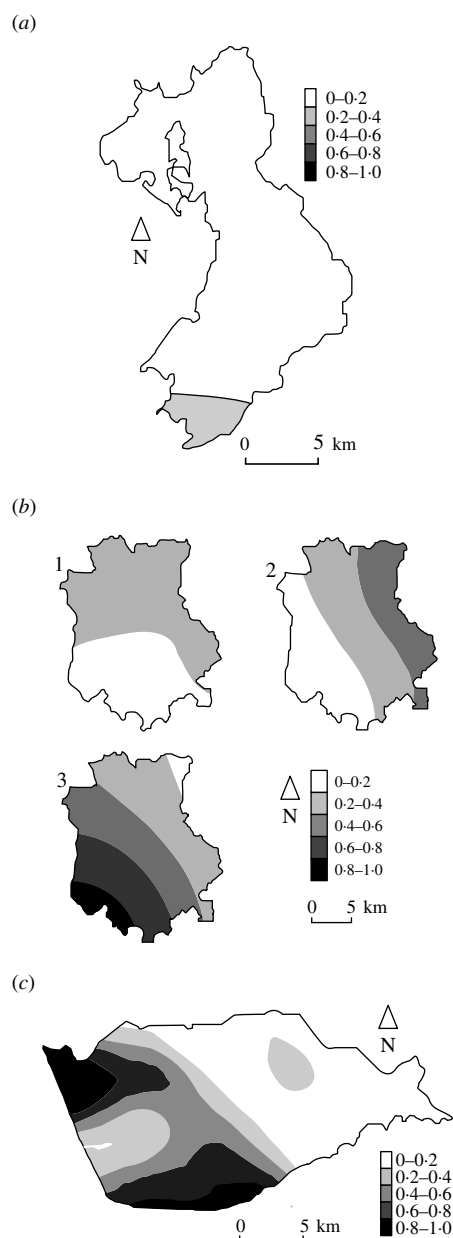


Fig. 3. Kernel estimates of badger strain-specific probability surfaces in three areas of the Four Area Project. (a) Donegal: kernel estimates of the A1A5A strain-specific probability surface. The estimate for A1A1A is 1 minus this ($P = 0.128$ indicating some spatial segregation). (b) Kilkenny: kernel estimates of the A1A1A, A4A1H, C1H1J strain-specific probability surfaces ($P < 0.001$ indicating spatial segregation). (c) Cork: kernel estimate of the A1A1A strain-specific probability surface. The estimate for C1H1J is 1 minus this ($P < 0.001$ indicates spatial segregation).

processes. Diggle [21] suggests the statistical information is greatest at small values of d , quite apart from the limitations imposed by the physical dimensions of the region under study. In the analysis of second-order intensities, we noted 95% of distances

between animals fell within 15 km and thus as suggested in Diggle [21], the difference in intensities, $ID(d)$ is taken to 8 km in all counties. Thus, the extent of the investigation was limited by the dimensions of the study areas. In the case of strain data for infected badgers it is of interest to know not only if badgers with the same strain cluster but where they cluster. Numbers are now small and so computation of second-order intensity functions is not so appropriate. Kernel spatial mapping provides a method for locating clusters of infection. The GLGMs used here arise naturally from generalized linear models (GLM). A GLM can be easily extended to include a random effect using available statistical software. Such models are known as generalized linear mixed models (GLMMs) as they are extensions of GLMs that allow additional sources of variability due to unobservable random effects. A GLMM with spatially correlated random effects is a GLGM [15]. In the GLGM models, it was not possible to fit all types of correlation structure in each area due to convergence problems. However, in all areas except Kilkenny, models with exponential correlation structure did converge. In addition, the practical ranges assuming an exponential covariance structure with logistic regression or binary regression were remarkably similar (a further indication of model robustness). This is perhaps because sample sizes are large and the proportions of infected badgers in each area not too extreme (Table 1) [22]. Thus, we argue the estimates of ranges assuming a spherical covariance structure and Gaussian response are also reasonably valid. These ranges are necessarily larger than the practical ranges from an exponential covariance model. We also note the second-order intensity and GLGM approaches allow for spatially varying density of badgers throughout each region. However, they both require the assumption that the observed events constitute a partial realization of a stationary spatial point process. Thus the correlation is assumed to be the same for all pairs of equally distant locations and does not depend on direction. The extent to which this is not the case may account for differing results between Fig. 2 and the models. For example, most of the infection is located in one corner in Kilkenny and correlation may depend on direction.

Study findings

This work confirms that TB clusters in Irish badger populations. Using K -second-order intensity

functions, we found significant evidence of clustering of infection in badgers in Cork, Kilkenny and Monaghan and weaker evidence from Donegal, with clustering occurring at all distances up to 8 km, except for Donegal. We are uncertain as to the reason for reduced evidence of clustering in Donegal. We note Donegal is geographically distinct with sea inlets being a key feature [1]. The results of the GLGMs also indicate spatial clustering of infection in each area. The results from the models with exponential correlation structure and spherical correlation structure show the same ordering of the areas in terms of magnitude of spatial ranges. The ranges in comparison to that of the second-order intensity results show no disagreement in Kilkenny and Monaghan. It is smaller in Cork. In Donegal the two approaches also show no disagreement, as a range of 18.7 km is at least half the largest diameter, and may just reflect spatial heterogeneity. Kilkenny had the lowest infection rate and thus has little variability in terms of infection and then necessarily the GLGM model will give a large spatial range. We note it is unlikely that the results from the GLGMs merely reflect spatial heterogeneity (apart from Donegal) given the results from the second-order intensity function analyses. Using two different types of measure, we found local associations between strains of *M. bovis* within the Irish badger population. We found that the main strains in three of the areas segregate, based on kernel probability estimates of strain-specific probability surfaces. Certain strain types dominate in defined areas (A1A3A in Cork, A1A5A in Donegal, C1H1J in Kilkenny and B1C1C in Monaghan) and this pattern is explained by local transmission of *M. bovis* within each area.

Comparisons with other studies

Our results are in agreement with other Irish work but with methodological differences. Olea-Popelka *et al.* [23] found minimal spatial clustering of TB in badgers using nearest-neighbour methods, but their analysis did not adjust for the fact that negative badgers are more prevalent than positive ones and hence will be closer together. Using a measure based on nearest-neighbour distance ratios, Kelly *et al.* [6] found clustering of infection when data from all counties were combined. Similar results using this type of measure were found by Olea-Popelka *et al.* [5] with strain data. However, they used a different reference group, used a subset of the badger setts and no formal statistical test were carried out. Costello *et al.* [24] also report a

diversity of strain types from the same sett, explained perhaps by badger movement and densities.

We restricted analyses to the first 12 months of the FAP, since the numbers of badgers captured in subsequent project years were too small to permit substantive second-order intensity function analysis. Moreover, years were not amalgamated, to avoid possible distorting effects of recent badger culling on the distribution of infection [9, 10] and to permit comparison with UK studies. Our results are in general agreement with other reports from Britain of infection in badger populations [2, 4, 25]. In the Randomized Badger Culling Trial (RBCT) analysis of Woodroffe *et al.* [2], it was found that *M. bovis* infections were locally clustered within the badger populations; clustering was seen in nine of their ten trial areas (overall $P < 0.001$). Spatial clustering of *M. bovis* infection was found at a scale of a few kilometers but the extent was not specified. Jenkins *et al.* [26] examined the changes in spatial associations in the RBCT data over successive culls. They observed that 40% of distances from an uninfected badger to the nearest infected badger exceeded 1 km whereas the corresponding percentage for infected badger to the nearest infected badger was about 20%. Similar percentages were found in the current study for Cork, which had the highest infection rate in badgers (0.36 badgers/km² per year, Table 1), and in this respect is the most similar to the RBCT. Thus, the spatial behaviour of infection in badgers in the FAP and RBCT appears to be similar, despite considerable differences in badger ecology [8, 27], population density [1, 28] and infection rates (Table 1). In terms of the latter, we calculated an infection rate in our study of 0.17 badgers/km² per year (1039 adult badgers removed, area prevalence varying between 13% and 28%, overall prevalence 20%) compared to 0.29 badgers/km² per year in the RBCT (2699 adult badgers removed in the initial cull, area prevalence varying between 2% and 38%, overall prevalence 12%).

Other issues

There is undoubtedly a complex relationship between density rates, previous badger removal, infection rates, the extent of badger ranges and the degree of contact between badgers, all of which may be factors in the scale at which clustering of infection was seen in these four areas. One badger cull had taken place during the period considered here and some badger removal from Kilkenny and Monaghan occurred

shortly before the study began [1]. Field studies, such as that of Tuytens *et al.* [9], reported that badger removal operations led to social disruption very soon after badger capture started and impacted setts at some distance from the main capturing areas. O'Corry-Crowe *et al.* [7] noted that partial removal of a badger population may further increase the potential for cross-infection between badgers as the residual badgers range more widely. This has also been reported in Woodroffe *et al.* [10]. O'Corry-Crowe *et al.* [7] using bait-marking techniques put badger territories at between 0.87 and 1.17 km² in an area of county Offaly with a badger density of 33.24 per km². This corresponds roughly to a spatial range of between 0.53 km and 0.61 km. The spatial TB correlation range is necessarily larger than actual ranges as it involves only infected badgers. In our study we find it to be considerably larger, ranging from 6–15 km. However, the badger densities in the areas considered here are considerably lower, ranging from about 0.58 to 1.27 per km². They are also lower than the 2.2 per km² found in parts of Scotland, where territories could exceed 3 km² as reported in Kruuk *et al.* [29]. Moreover, Sleeman *et al.* [30] detected considerable long-distance (up to 8 km) and sometimes extra-territorial, movements by some badgers in an Irish study. The long-distance movements were confined to badgers in the smaller social groups. O'Corry-Crowe *et al.* [27] report a less stable social structure in low-density badger populations, i.e. less well-defined social groups. The interaction of the two factors – culling and density is complex. Two other recent studies [11, 31] concerning the effects of perturbation on TB in badgers suggest this. Mathematical models of infectious diseases [32] suggest that prevalence of infection in animals is likely to be density dependent. The degree of badger contact is also an obvious factor in disease transmission. The results on strain data here and other studies showing prevalence may be high in particular social groups concur with this [4, 25].

In conclusion the data show strong evidence of spatial clustering of *M. bovis* infection within badger populations with the scale of the correlation exceeding 6 km in all areas. Moreover, badgers infected with the same strain of *M. bovis* are spatially segregated. Localized culling forms part of TB control policy in Ireland as outlined in Kelly *et al.* [33]. Based on the results here, the scale for culling to be both feasible and effective requires further study. The implications of clustering on control policy have been discussed in

the British context [2, 3, 10, 28, 31]. In Ireland, we face ongoing challenges with TB control in an environment where badgers are a protected and valued wildlife species contributing to biodiversity but are also an important reservoir of infection for cattle.

ACKNOWLEDGEMENTS

Thanks are due to the Centre for Veterinary Epidemiology and Risk Analysis, University College Dublin for providing the data for this study. Thanks also to Eamon Costello (Department of Agriculture, Fisheries and Food (DAFF), Central Veterinary Research Laboratory, Backweston Campus, Celbridge, Co. Kilkenny, Ireland) for providing the *M. bovis* culture data that were used in this study.

DECLARATION OF INTEREST

None.

REFERENCES

1. **Griffin JM, et al.** The impact of badger removal on the control of tuberculosis in cattle herds in Ireland. *Preventive Veterinary Medicine* 2005; **67**: 237–266.
2. **Woodroffe R, et al.** Spatial association of *Mycobacterium bovis* infection in cattle and badgers *Meles meles*. *Journal of Applied Ecology* 2005; **42**: 852–862.
3. **Donnelly CA, et al.** Positive and negative effects of widespread badger culling on tuberculosis in cattle. *Nature* 2006; **439**: 843–846.
4. **Delahay RJ, et al.** The spatio-temporal distribution of *Mycobacterium bovis* (bovine tuberculosis) infection in a high-density badger population. *Journal of Animal Ecology* 2000; **69**: 428–441.
5. **Olea-Popelka FJ, et al.** Spatial relationship between *Mycobacterium bovis* strains in cattle and badgers in four areas in Ireland. *Preventive Veterinary Medicine* 2005; **71**: 57–70.
6. **Kelly GE, et al.** Descriptive spatial analyses of *Mycobacterium bovis* infection in badgers *Meles meles* and cattle in four areas in Ireland. Unpublished manuscript available from: <https://mathsci.ucd.ie/docserve?id=22>.
7. **O’Corry-Crowe G, et al.** The effect of reduction in badger density on the spatial organization and activity of badgers *Meles meles* L. in relation to farms in central Ireland. *Biology and Environment Proceedings of the Royal Irish Academy* 1996; **96B**: 147–158.
8. **Smal C.** *The Badger and Habitat Survey of Ireland*. Dublin: Government Publications, Stationery Office, 1995.
9. **Tuytens FAM, et al.** Spatial perturbation caused by a badger *Meles meles* culling operation: implications for the function of territoriality and the control of bovine tuberculosis *Mycobacterium bovis*. *Journal of Animal Ecology* 2000; **69**: 815–828.
10. **Woodroffe R, et al.** Effects of culling on badger *Meles meles* spatial organization: implications for the control of bovine tuberculosis. *Journal of Applied Ecology* 2006; **43**: 1–10.
11. **Woodroffe R, et al.** Effects of culling on badger abundance: implications for tuberculosis control. *Journal of Zoology* 2008; **274**: 28–37.
12. **Costello E, et al.** Laboratory examination of tissues from badgers and cattle from the four area badger study for evidence of tuberculosis. *Selected Papers, Tuberculosis Investigation Unit*. Dublin: University College Dublin, 1997, pp. 32–36.
13. **Ripley B.** *Spatial Statistics*. Chichester: Wiley, 1981.
14. **Diggle PJ, Chetwynd AG.** Second order analysis of spatial clustering in inhomogenous populations. *Biometrics* 1991; **47**: 1155–1163.
15. **Diggle PJ, Ribeiro PJ.** *Model-based Geostatistics*. New York: Springer, 2007.
16. **Diggle PJ, Zheng P, Durr P.** Nonparametric estimation of spatial segregation in a multivariate point process: bovine tuberculosis in Cornwall, UK. *Applied Statistics* 2005; **54**: 645–658.
17. **Lee Y, Nelder JA, Pawitan Y.** *Generalized Linear Models with Random Effects*. Boca Raton, Florida: Chapman and Hall/CRC, 2006.
18. **Akaike H.** Information theory and an extension of the maximum likelihood principle. In: Petran BN, Csaki F, eds. *Proceedings of the 2nd International Symposium on Information Theory*. Budapest, Hungary: Akademiai Kiado, 1973, pp. 267–281.
19. **R Development Core Team.** *R: A Language and Environment for Statistics*. Vienna, Austria: R Foundation for Statistical Computing, 2007.
20. **Schabenberger O, Gotway CA.** *Statistical Methods for Spatial Data Analysis*. Boca Raton, Florida: Chapman and Hall/CRC, 2005, section 3.4.
21. **Diggle PJ.** *Statistical Analysis of Spatial Point Patterns*, 2nd edn. London: Arnold, 2003, chapter 5.
22. **Cox DR, Wermuth N.** Response models for mixed binary and quantitative variables. *Biometrika* 1992; **79**: 441–461.
23. **Olea-Popelka FJ, et al.** Bovine tuberculosis in badgers in four areas in Ireland: does tuberculosis cluster? *Preventive Veterinary Medicine* 2003; **59**: 103–111.
24. **Costello E, et al.** Genotyping of *Mycobacterium bovis* isolates from badgers in four areas of the Republic of Ireland by restriction fragment length polymorphism analysis. *Veterinary Record* 2006; **159**: 619–623.
25. **Cheeseman CL, et al.** The population structure, density and prevalence of tuberculosis (*Mycobacterium bovis*) in badgers (*Meles meles*) from four areas in south-west England. *Journal of Applied Ecology* 1981; **18**: 795–804.
26. **Jenkins HE, et al.** Effects of culling on spatial associations of *Mycobacterium bovis* infections in badgers and cattle. *Journal of Applied Ecology* 2007; **44**: 897–908.
27. **O’Corry-Crowe G, Eves J, Hayden R.** Sett distribution, territory size and population density of badgers

- (*Meles meles* L.) in East Offaly. In: Hayden TJ, ed. *The Badger*. Dublin: Royal Irish Academy, 1993, pp. 35–56.
28. **Donnelly CA, et al.** Impacts of widespread badger culling on cattle tuberculosis: concluding analyses from a large-scale field trial. *International Journal of Infectious Diseases* 2007; **11**: 300–308.
29. **Kruuk H, Parish T.** Changes in the size of groups and ranges of the European badger (*Meles meles* L.) in an area of Scotland. *Journal of Animal Ecology* 1987; **56**: 351–364.
30. **Sleeman D, Mulcahy M.** Behaviour of Irish badgers in relation to bovine tuberculosis. In: Hayden TJ, ed. *The Badger*. Dublin: Royal Irish Academy, 1993, pp. 154–165.
31. **Macdonald DW, Riordan P, Mathews F.** Biological hurdles to the control of TB in cattle: a test of two hypotheses concerning wildlife to explain the failure of control. *Biological Conservation* 2006; **131**: 268–286.
32. **Becker NG.** *Analysis of Infectious Disease Data*. London: Chapman and Hall, 1989.
33. **Kelly GE, et al.** A long term observational study of the impact of badger removal on herd restrictions due to bovine TB in the Irish midlands during 1989–2004. *Epidemiology and Infection* 2008; **136**: 1362–1373.