

University of Nebraska - Lincoln

DigitalCommons@University of Nebraska - Lincoln

Nebraska Anthropologist

Anthropology, Department of

1997

Nebraska Anthropologist Volume 14: 1997-1999 Table of Contents

Follow this and additional works at: <https://digitalcommons.unl.edu/nebanthro>



Part of the [Anthropology Commons](#)

"Nebraska Anthropologist Volume 14: 1997-1999 Table of Contents" (1997). *Nebraska Anthropologist*. 110.

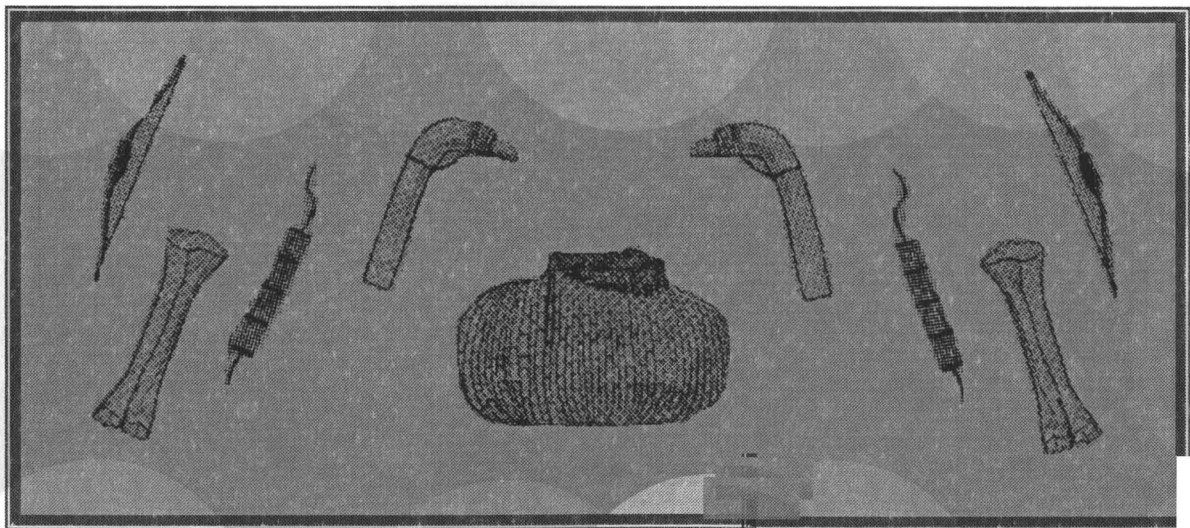
<https://digitalcommons.unl.edu/nebanthro/110>

This Article is brought to you for free and open access by the Anthropology, Department of at DigitalCommons@University of Nebraska - Lincoln. It has been accepted for inclusion in Nebraska Anthropologist by an authorized administrator of DigitalCommons@University of Nebraska - Lincoln.

Nebraska Anthropologist

JOURNAL OF THE UNIVERSITY OF NEBRASKA-LINCOLN ANTHROPOLOGY GROUP

VOLUME 14, NUMBER 1, 1997-99



THE UNIVERSITY OF NEBRASKA-LINCOLN ANTHROPOLOGY GROUP

The UNL Anthropology Group is a non-profit student organization for graduate and undergraduate anthropology majors and other interested students and individuals.

1998-99 Anthropology Group Officers:

Molly Boeke - President
Anne Kern - Secretary/Treasurer
Tamie Sawaged - Program Coordinator
Tiffany Richards- Student/Faculty Liaison
Karri L. Springer - Editor, *Nebraska Anthropologist*
Dr. Martha McCollough - Faculty Advisor

THE *NEBRASKA ANTHROPOLOGIST*

The *Nebraska Anthropologist* is a peer reviewed publication of the University of Nebraska-Lincoln Anthropology Group. It serves to disseminate student and professional research in the subfields of anthropology.

Nebraska Anthropologist Editorial Board:

Editor: Karri L. Springer Advisor: Dr. Martha McCollough

Jerry Androy	Ann Bauermeister
Tawnya Blades	Michael Chidley
Jennifer Heichel	Anne Kern
Erin Kimmerle	Clea Koff
Erin Richardson	Tamie Sawaged
William Volf	Chris Widga

The *Nebraska Anthropologist* welcomes original contributions in anthropology and related fields. Manuscripts submitted for consideration should closely follow the style and editorial policy of *American Antiquity*. For detailed information about submissions, please contact the editor. Mail any manuscripts or correspondence to:

Editor, *Nebraska Anthropologist*
Department of Anthropology
126 Bessey Hall
University of Nebraska-Lincoln
Lincoln, NE 68588-0368

EDITOR'S NOTE

The University of Nebraska-Lincoln Anthropology Group and the UNL Anthropology Department are committed to encouraging a diverse approach to the study and practice of anthropology. This is reflected in the activities of the UNL Anthropology Group and the Anthropology Department, both sponsors of this publication. The articles in this volume also reflect this diversity. All of the subdisciplines of anthropology are represented by the articles, written by UNL undergraduate and graduate students.

ACKNOWLEDGMENTS

As editor, I would like to thank many people for their help and support throughout the publication process. First, I would like to thank the Anthropology Department for the Champe/Weakly funding. Ultimately, this publication could have proceeded without it. Second, I would like to thank my husband for caring as much as I did about the final publication. Also, I would like to thank Dr. Martha McCollough, the faculty advisor, for her encouragement and helpfulness. Next, the Anthropology Group members kept the process on schedule and served as valuable consultants on various issues. The Editorial Board members cannot be forgotten, since without their hard work and clarity this publication would not have been possible. The most important people to thank are last, however. The students who submit papers to this publication are literally the ones who create it. They are brave and proud enough to submit their work to peer reviewers and to allow it to be published. These are the most important people involved with this publication. Thank you.

Any errors in this volume remain my responsibility as editor.

Karri L. Springer
Editor, 1997-99

On the cover: Concept and illustrations by Karri L. Springer, editor.

Material in the *Nebraska Anthropologist* may be quoted.
Please credit the *Nebraska Anthropologist* and the specific author if any portion of this work is used.

Nebraska Anthropologist
Journal of the UNL Anthropology Group
Volume 14, Number 1, 1997-1999

ARTICLES

- 01 Domestication of Dogs and Their Use on the Great Plains
Ruth Callahan
- 12 Human Responses to Bison Nutritional Variability: An Illustration from the Central Plains
Chris Widga
- 34 Winter Counts as Possible Precursors to Writing
Petra Eccarius
- 39 Looted Archaeological Sites: Are They Worthy of Scientific Investigation?
Michelle J. Lundeen
- 47 On Two Eras of African Archaeology: Colonial and National
Clea Koff
- 58 Factors Leading to the Uprisings at Wounded Knee in 1890 and 1973: The Other Story
Andrew Amiotte
- 68 Starbucks vs. Equal Exchange: Assessing the Human Costs of Economic Globalization
Lindsey M. Smith
- 84 Monogamy vs. Polygyny in Rwanda: Round 1-The White Fathers, Round 2-The 1994 Genocide
Clea Koff
- 96 Tibetan Fraternal Polyandry: A Review of its Advantages and its Breakdown
Jeff Willett
- 108 Native Americans and Diabetes
Kristina K. Lee
- 124 Human Mate Selection Based on Developmental Stability as Signaled Through Physical Attractiveness: An Assessment of the Traits Used to Determine Attractiveness and Evolutionary Mechanisms for their Development
Erin Kimberle