

University of Nebraska - Lincoln

DigitalCommons@University of Nebraska - Lincoln

Faculty Publications in the Biological Sciences

Papers in the Biological Sciences

7-28-2009

Species-driven changes in nitrogen cycling can provide a mechanism for plant invasions

Johannes M. H. Knops

University of Nebraska - Lincoln, jknops@unl.edu

Ramesh Laungani

University of Nebraska - Lincoln, ramesh_laungani@yahoo.com

Follow this and additional works at: <https://digitalcommons.unl.edu/bioscifacpub>



Part of the [Life Sciences Commons](#)

Knops, Johannes M. H. and Laungani, Ramesh, "Species-driven changes in nitrogen cycling can provide a mechanism for plant invasions" (2009). *Faculty Publications in the Biological Sciences*. 112.

<https://digitalcommons.unl.edu/bioscifacpub/112>

This Article is brought to you for free and open access by the Papers in the Biological Sciences at DigitalCommons@University of Nebraska - Lincoln. It has been accepted for inclusion in Faculty Publications in the Biological Sciences by an authorized administrator of DigitalCommons@University of Nebraska - Lincoln.

Species-driven changes in nitrogen cycling can provide a mechanism for plant invasions

Ramesh Laungani and Johannes M. H. Knops¹

School of Biological Sciences, University of Nebraska, 348 Manter Hall, Lincoln, NE 68588

Edited by David Schimel, NEON, Inc, Boulder, CO, and accepted by the Editorial Board May 29, 2009 (received for review January 28, 2009)

Traits that permit successful invasions have often seemed idiosyncratic, and the key biological traits identified vary widely among species. This fundamentally limits our ability to determine the invasion potential of a species. However, ultimately, successful invaders must have positive growth rates that longer term result in higher biomass accumulation than competing established species. In many terrestrial ecosystems nitrogen limits plant growth, and is a key factor determining productivity and the outcome of competition among species. Plant nitrogen use may provide a powerful framework to evaluate the invasive potential of a species in nitrogen-limiting ecosystems. Six mechanisms influence plant nitrogen use or acquisition: photosynthetic tissue allocation, photosynthetic nitrogen use efficiency, nitrogen fixation, nitrogen-leaching losses, gross nitrogen mineralization, and plant nitrogen residence time. Here we show that among these alternatives, the key mechanism allowing invasion for *Pinus strobus* into nitrogen limited grasslands was its higher nitrogen residence time. This higher nitrogen residence time created a positive feedback that redistributed nitrogen from the soil into the plant. This positive feedback allowed *P. strobus* to accumulate twice as much nitrogen in its tissues and four times as much nitrogen to photosynthetic tissues, as compared with other plant species. In turn, this larger leaf nitrogen pool increased total plant carbon gain of *P. strobus* two- to sevenfold as compared with other plant species. Thus our data illustrate that plant species can change internal ecosystem nitrogen cycling feedbacks and this mechanism can allow them to gain a competitive advantage over other plant species.

ecosystem feedbacks | plant nitrogen use

The rate of biological plant invasions is accelerating (1). Invasions can have significant impacts on the biodiversity (2), disturbance regimen (3), and water and nutrient cycling (4) of ecosystems. Specific invader success has been attributed to factors such as specific leaf area (5), water use efficiency (6), resistance to disturbance (7), herbivore resistance (8), escape from natural enemies (9), and plant–soil feedbacks (10, 11). However, among invasive species, only a few general plant traits, such as vegetative reproduction, self pollination, phylogeny (i.e., other successful invaders in the family or genus) and native geographic range have been identified (12, 13). This fundamentally limits our ability to determine the invasion potential of a species.

Ultimately, all plants need to produce biomass and successful invaders need to maintain a positive growth rate during the initial establishment phase (14) and eventually many successful invaders accrue significantly more biomass than established competitors (2, 15). Therefore, if high biomass accumulation is key for the success of an invader and if the growing season of the invader corresponds with the native established species, we must understand how it can successfully maintain a positive growth rate and accumulate more biomass than its competitors. In many temperate-zone terrestrial ecosystems plant biomass production is limited by nitrogen (16), and nitrogen is a key factor determining the outcome of interspecific competition in these ecosystems (17). Therefore to elucidate how and why a plant species is a successful invader in a nitrogen-limited environment, we

need to understand species-specific patterns of plant nitrogen use and related species-driven changes in nitrogen gains and losses within ecosystems, using a systematic approach.

Plants can use two different nitrogen-based strategies to maximize productivity in nitrogen-limited systems: increased carbon gain per unit plant nitrogen, or increased total plant nitrogen pool (Fig. 1). Given equal pools of plant nitrogen among species, higher plant carbon gain per unit plant nitrogen can be achieved either by allocating proportionally more nitrogen to photosynthetic tissues (18) or by having a higher photosynthetic efficiency through higher carbon gain per unit leaf nitrogen (19). Both mechanisms increase plant carbon gain per unit plant nitrogen because most nitrogen within leaves is used for Rubisco (19), the central enzyme involved in carbon-fixation by plants, and there is a positive linear correlation between photosynthetic rate and leaf nitrogen concentration (20). Therefore, if a given species allocates proportionally more nitrogen to photosynthetic structures relative to other species, it will increase its carbon gain per unit plant nitrogen, as seen in some invasive annual grasses (21). Alternatively, increasing the rate of carbon fixation per unit leaf nitrogen also increases total plant carbon gain per unit plant nitrogen and species differ in this rate (22–24) and successful invasive species can have higher photosynthetic nitrogen use efficiency (22). However, the largest increases in plant carbon per unit leaf nitrogen occur in plants that use the C₄ photosynthetic pathway. C₄ plants use their Rubisco more efficiently than C₃ plants by increasing internal leaf CO₂ concentrations (19), allowing several C₄ species to be successful invaders (25). This mechanism, however, is taxonomically restricted to some annual and perennial grasses in the *Poaceae* (19) and to forbs in the family *Chenopodiaceae* and the genus *Euphorbia* (26).

For a plant to increase the total amount of nitrogen in its biomass as compared with other established species, ecosystem nitrogen pools and fluxes have to change. Plant species can change ecosystem nitrogen pools and fluxes through the following: increased ecosystem nitrogen inputs via nitrogen fixation; reduced ecosystem nitrogen losses from nitrogen leaching; increased soil nitrogen turnover through changes in gross nitrogen mineralization; or reduced plant nitrogen turnover via increased plant nitrogen residence time (18) (Fig. 1), which can be caused by longer-lived tissues and/or higher rates of nitrogen retranslocation from senescing tissues (27). All four of these mechanisms have been cited as driving the success of some invaders. Higher ecosystem nitrogen pools caused by nitrogen fixation have been documented for the successful woody invaders *Morella faya* and *Falcataria moluccana* (28, 29). For non-nitrogen-fixing plants, there are two main pools of nitrogen in the ecosystem,

Author contributions: J.M.H.K. designed research; R.L. and J.M.H.K. performed research, analyzed data, and wrote the paper.

The authors declare no conflict of interest.

This article is a PNAS Direct Submission. D.S. is a guest editor invited by the Editorial Board.

¹To whom correspondence should be addressed. E-mail: jknops2@unl.edu.

This article contains supporting information online at www.pnas.org/cgi/content/full/0900921106/DCSupplemental.

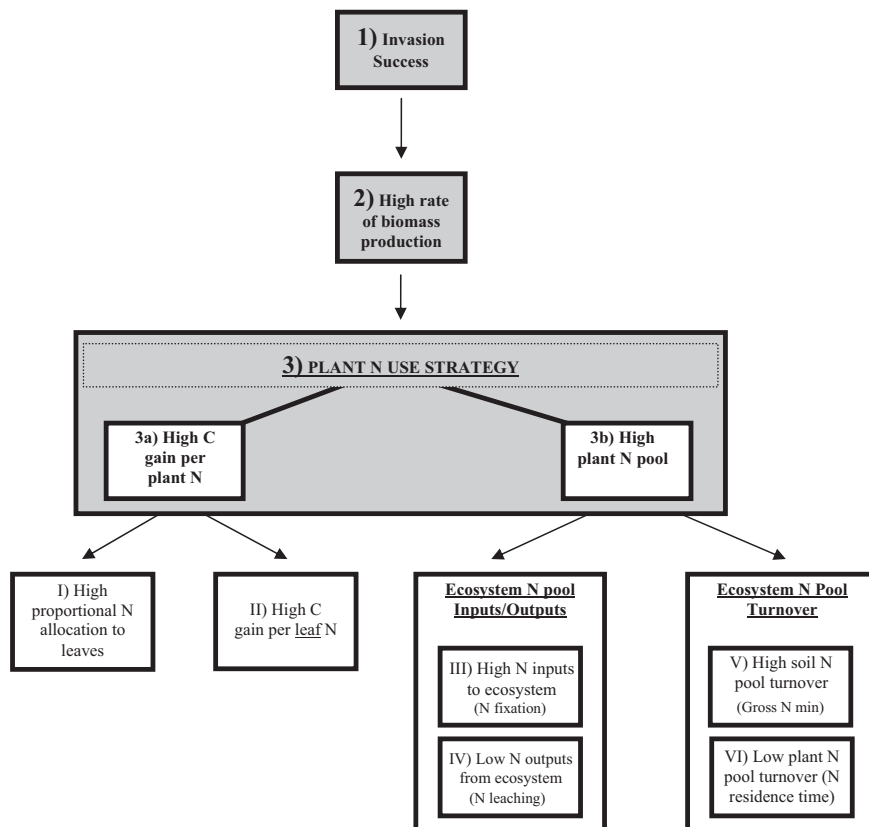


Fig. 1. General framework for invader success in nitrogen-limited systems (Level 1). Successful invasion of species into these successional grasslands is driven by high invader carbon accrual (Level 2). In these systems, high plant carbon accumulation is dependent on the nitrogen use strategy (Level 3). Plants can maximize productivity through two nitrogen use strategies: increased carbon gain per unit plant nitrogen (Level 3a) or increased nitrogen in plant biomass (Level 3b). A plant can achieve the first strategy through two pathways: I) high proportional nitrogen allocation to leaves, or II) high carbon gain per unit leaf nitrogen. Alternatively, four possible pathways can drive an increased total plant nitrogen pool: III) high ecosystem level nitrogen inputs via nitrogen fixation; IV) low ecosystem-level nitrogen losses via leaching; V) high soil nitrogen pool turnover rate, as measured by gross nitrogen mineralization, resulting in a larger plant-available nitrogen pool; or VI) low plant nitrogen pool turnover via high leaf longevity.

namely the plant nitrogen pool and soil nitrogen pool, with the soil nitrogen pool being significantly larger than the plant nitrogen pool (27). A plant species that reduces nitrogen-leaching losses or increases soil nitrogen turnover can increase the annual flux of nitrogen from the soil pool to the plant pool. Increases in nitrate leaching have been shown to facilitate the invasion of *Bromus tectorum* into arid and semiarid ecosystems (30), whereas increased soil nitrogen turnover has been linked to plant species identity (31) and the success of invasive grasses in Hawaii (25). At steady state, plants with low nitrogen residence time rapidly return a large proportion of the nitrogen in their biomass to the soil nitrogen pool through senescence and other annual leaf and root litter losses, allowing the soil nitrogen pool to be replenished annually. Invasion into nitrogen-limited systems by a plant species with a higher nitrogen residence time would reduce the annual flux of nitrogen from the plant pool back to the soil pool but not the nitrogen flux from the soil pool to the plant pool in the short term. Driven by higher plant nitrogen residence time, these changes in nitrogen fluxes would subsequently lead to positive feedback through nitrogen cycling, by annually enhancing the plant nitrogen pool while concurrently depleting the soil nitrogen pool (27). High plant nitrogen residence time via increased tissue longevity is common to successful species in nutrient-poor conditions (32, 33).

Thus, in total there are six mechanisms by which species can either use nitrogen more efficiently or acquire more nitrogen that could explain higher biomass accumulation in nitrogen limited systems of successful invaders (Fig. 1, I–VI). Here we

identify key trait differences in plant nitrogen use and nitrogen cycling between Eastern white pine (*Pinus strobus*), a species that is rapidly invading prairies in central Minnesota (34), two tree species that are encroaching at a much slower rate (35), and four herbaceous grassland plant species that are being replaced.

We conducted a common garden study at the Cedar Creek Ecosystem Science Reserve in central Minnesota, a system in which nitrogen is the primary resource limiting plant productivity (36). To examine species differences in nitrogen use and ecosystem nitrogen cycling, we established replicated closed mesocosms of seven grassland and forest species (and a bare-soil control). By containing the ecosystem nitrogen pool, we were able to evaluate all six potential mechanisms by explicitly quantifying species effects on both plant and soil total nitrogen pools and fluxes, which is essential for determining plant nitrogen use and ecosystem nitrogen gains and losses. We compared *P. strobus* to the two historically dominant but currently non-invasive oak species (*Quercus ellipsoidalis* and *Q. macrocarpa*) (35), two dominant grasses that are being replaced by *P. strobus*; an introduced C_3 species *Poa pratensis* and a native C_4 species *Schizachyrium scoparium*; and two non-invasive native forbs that locally can attain high abundances in these systems, the nitrogen fixer *Lespedeza capitata* and the clonal forb *Solidago canadensis*.

Results

We found that *P. strobus* accrued nearly twice as much biomass as the next most productive species (*Q. ellipsoidalis*) and more than three times as much biomass relative to all other species

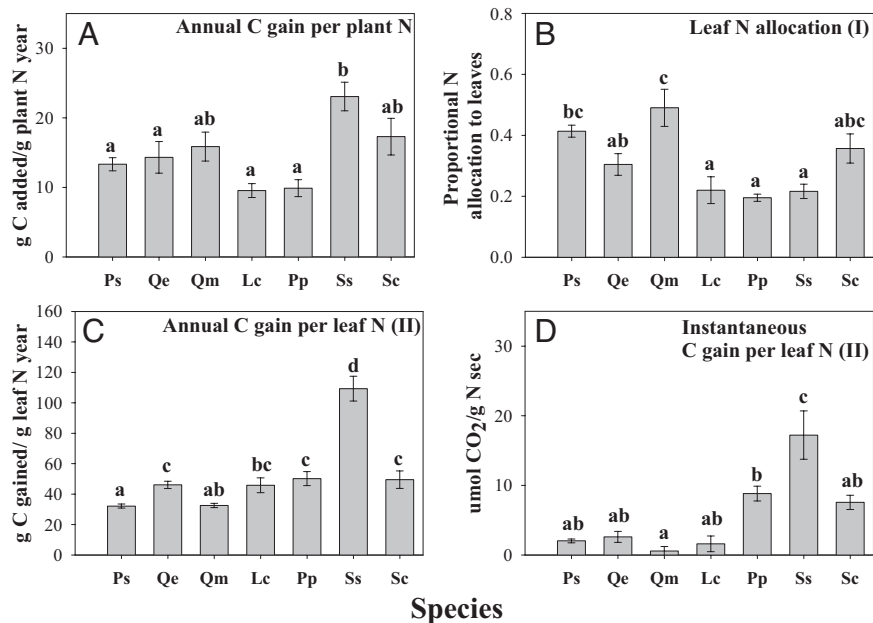


Fig. 3. Mechanisms that drive annual carbon gained per unit plant nitrogen (A) (g C/g plant N yr); (B) proportional nitrogen allocation to leaves (I); (C) annual carbon gained per unit leaf nitrogen (II); (D) instantaneous carbon gained per unit leaf N at 1500 PAR (II; g C/g N sec). Species differences in plant and soil response variables were examined using one-way ANOVA; letters represent significant differences across species from *post hoc* Tukey tests ($P < 0.05$). For species abbreviations, see Fig. 2. Roman numerals refer to the framework in Fig. 1.

opathy (11), directly impact competition among species or in the case in which an invading species alters the ecosystem fire regimen (41). However, this framework can be used to examine a number of important community interactions and plant traits which have been suggested as potential mechanisms driving invasion success. These include release from natural enemies (8),

plant-herbivore interactions (8), plant-pathogen interactions (10), high growth rate (5), water use efficiency (6), nitrogen use efficiency (22), nitrogen additions (42), fire (43), and resistance to disturbance (7). All of these potential mechanisms can be expressed and evaluated precisely in terms of plant nitrogen use, gain, and loss. This is because each of these interactions or traits

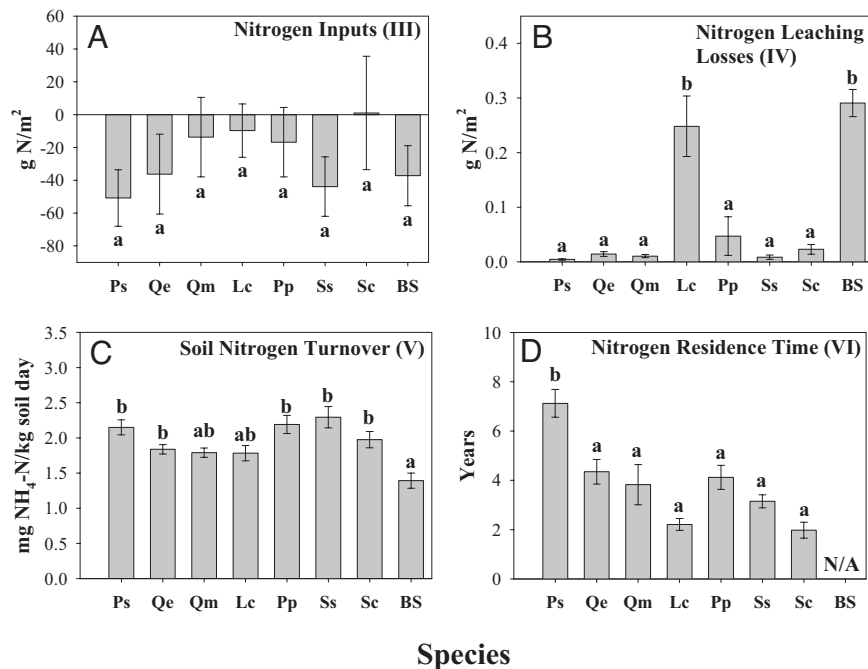


Fig. 4. Mechanisms which drive species differences in plant nitrogen pool size. (A) Ecosystem level nitrogen inputs (III), change in total plot nitrogen over 6 years (g N/m²); (B) Ecosystem level nitrogen losses (IV), nitrogen leaching losses over one growing season (g N/m²); (C) Soil nitrogen turnover rate (V), seasonal average of gross nitrogen mineralization (mg NH₄-N/kg soil day); (D) Plant nitrogen turnover rate (VI), nitrogen residence time (Years). Species differences in plant and soil response variables were examined using one-way ANOVA; letters represent significant differences across species from *post hoc* Tukey tests ($P < 0.05$). For species abbreviations, see Fig. 2. Roman numerals refer to the framework in Fig. 1.

differentially affect plant species nitrogen use and therefore can change competitive outcomes between invasive species and the established plant community. Finally, this resource-based predictive framework provides a quantitative, functional basis to evaluate management options for invasive species control. Evaluation of plant nitrogen use dynamics can be used to determine whether management practices such as burning, introduction of natural enemies, and resource availability manipulations (44) can sufficiently change plant nitrogen use, loss, or gain to alter the competitive advantage held by an invasive species.

Materials and Methods

Experimental mesocosms were established at Cedar Creek Ecosystem Science Reserve in central Minnesota in late 2000. Soils are sandy and derived from glacial outwash (45), with nitrogen being the primary resource limiting plant productivity (36). Mesocosms consisted of large plastic pots (60 cm in diameter and 50 cm in depth) that were dug into the ground so that the top of the pot was flush with the soil surface. Each pot drained into a hose, and there was an access tube next to the pot that collected all water draining from a pot. Each pot was filled with locally collected representative field soil, with the lower 40 cm being filled with subsurface soil and the top 10 cm being filled with topsoil. Grasses and forbs were seeded in at the time of initial setup; *Quercus* acorns were planted in the fall of 2000; and 1-year-old seedlings of *Pinus* were planted in the early spring of 2001. In 2006, the species in the experimental mesocosms were well established. *Lespedeza capitata* mesocosms had an average density of 110.6 individuals/m², *Solidago altissima* had an average density of 130 individuals/m², *Quercus ellipsoidalis* had an average density of 82.5 individuals/m², *Quercus macrocarpa* had an average density of 79 individuals/m², *Pinus strobus* had average density of 49.5 individuals/m², and the grass species, *Poa pratensis* and *Schizichyrium scoparium* had a percent cover greater than 90% of the soil surface.

To determine species-mediated changes on total soil nitrogen, we sampled soil at four depths in early spring 2001 and early fall 2006 (0–5 cm, 5–10 cm, 10–25 cm, and 25–50 cm). Soil percent nitrogen was determined using combustion analysis from a Costech Analytical ECS 4010 at the University of Nebraska Ecosystem Analysis Laboratory (Lincoln, NE). Soil percent nitrogen was converted to g nitrogen/m² following an equation developed for soil bulk density at Cedar Creek (46). Measured values of soil bulk density at 0–10 cm (≈ 1.40 g/cm³) and 10–25 cm (≈ 1.48 g/cm³) were comparable to those calculated following the equation (≈ 1.45 g/cm³). Change in the total soil nitrogen pool was the difference between soil nitrogen content in 2001 and 2006. Extractable inorganic soil nitrogen and water leachate samples were collected seven times between June 2006 and September 2006 and were analyzed colorimetrically for NH₄⁺ and NO₃⁻ concentration using a Bran Luebbe AA3 at the University of Nebraska Ecosystem Analysis Laboratory (Lincoln, NE). The total flux of NH₄⁺ and NO₃⁻ in the leachate was calculated as the product of the water volume collected at each sampling date and the NH₄⁺ and NO₃⁻ concentrations of the measured leachate sample. The data presented is a cumulative total of both NH₄⁺ and NO₃⁻ across all seven sampling periods. Soil nitrogen turnover was measured as rates of gross nitrogen mineralization in late 2005 and summer 2006. Measurements were taken in September 2005, May 2006, June, 2006, and July 2006 to encompass possible temporal variability in gross nitrogen mineralization rates. The data presented are a seasonal average across the four sampling dates. Gross nitrogen mineralization rates were determined using ¹⁵N isotopic-pool dilution of homogenized sieved soil

samples from the top 10 cm of the mesocosm (47). Approximately 250 g soil (fw) was amended with 10 ml of 0.1309 mmol/l solution of (¹⁵NH₄)₂SO₄ (99% atom) in a resealable plastic bag and homogenized by hand to ensure even distribution of the solution throughout the bag. Soil samples were extracted immediately after ¹⁵N addition and 24 hours after ¹⁵N addition in 75 ml of 2 mol/l KCl. Isotopic samples were processed at the University of California–Davis Stable Isotope Facility.

Above- and below-ground biomass was harvested in 2006 in all experimental mesocosms. Above-ground biomass was sampled in a 10 × 60-cm strip through the center of the pot and was separated into leaves, stems (for *Quercus* species, *P. strobus*, *S. altissima*, and *L. capitata*), and leaf litter. For the woody species, the clipped area contained two to three individual trees that were all harvested; this is equivalent to 33–66 individuals/m². Below-ground biomass was sampled at three points within the clipped area at three depths (0–10 cm, 10–25 cm, and 25–50 cm) using a 2-inch-diameter core. For all species, below-ground biomass was assumed to be at steady state in 2006. Assuming that root biomass was at steady state, root ingrowth cores were put in place to determine annual root growth. These cores were placed down to a depth of 20 cm in May 2006 and harvested in late August 2006. Plant photosynthetic light response curves were generated using a Li-COR 6400 Portable Photosynthesis system (Lincoln, NE). For all non-woody species, above-ground tissue longevity (non-woody stems and leaves) was assumed to be 1 year. For the two deciduous oak species, leaf longevity was assumed to be 1 year, whereas for *P. strobus* leaf longevity was estimated to be 2 years based on observations that two cohorts of needles were present on the plant at the peak of the growing season.

Each pool of plant biomass (leaves, stems, litter, roots, and root ingrowth) was dried to a constant weight and analyzed for carbon and nitrogen content using combustion analysis from a Costech analytical ECS 4010 at the University of Nebraska Ecosystem Analysis Laboratory (Lincoln, NE). Plant biomass was converted to carbon mass using the measured carbon concentrations. For all non-woody species, annual carbon gain was determined as the sum of standing leaf carbon, stem carbon (for *S. altissima* and *L. capitata*), and root ingrowth carbon. For the two oak species, annual carbon gain was the sum of standing leaf carbon, 1/6 of stem carbon, and root ingrowth carbon. For *P. strobus*, annual carbon gain was the sum of 1/2 standing leaf carbon, 1/6 of stem carbon, and root ingrowth carbon. Only 1/2 of standing leaf carbon was used for *P. strobus* because leaf longevity was estimated at 2 years. Instantaneous carbon gain per unit leaf nitrogen was calculated using the leaf nitrogen content and measured photosynthetic rates at 1500 PAR. Plant nitrogen residence time was calculated as the inverse of annual plant nitrogen losses per unit standing plant nitrogen (48). Annual plant nitrogen losses were measured as the sum of leaf litter nitrogen losses and root ingrowth nitrogen.

Data were analyzed in SPSS version 17 software (SPSS Inc., Chicago, IL). Species differences in plant and soil response variables were examined using one-way analysis of variance (ANOVA), with species as a fixed factor. Differences between individual species were examined using *post hoc* Tukey tests ($P < 0.05$).

ACKNOWLEDGMENTS. We thank Chad Brassil, Nick Haddad, Stan Harpole, Amy Kochsiek, Svata Louda, Joe Mascaro, Cathleen McFadden, Shahid Naeem, Diana Pilson, Sabrina Russo, and Dave Tilman for comments and Wendy Bengston, Jenny Goth, Troy Mielke, Kally Worm and the Cedar Creek interns for analytical and field help and the University of Nebraska–Lincoln Ecosystem Analysis Laboratory and the University of California–Davis Stable Isotope Facility for sample analysis. This research was supported by the Center for Invasive Plant Management, the National Science Foundation, and the University of Nebraska.

- Sax DF, Gaines SD (2003) Species diversity: From global decreases to local increases. *Trends Ecol Evol* 18:561–566.
- Mack RN, et al. (2000) Biotic invasions: Causes, epidemiology, global consequences, and control. *Ecol Appl* 10:689–710.
- Mack MC, D'Antonio CM (1998) Impacts of biological invasions on disturbance regimes. *Trends Ecol Evol* 13:195–198.
- Ehrenfeld JG (2003) Effects of exotic plant invasions on soil nutrient cycling processes. *Ecosystems* 6:503–523.
- Grotkopp E, Rejmanek M, Rost TL (2002) Toward a causal explanation of plant invasiveness: Seedling growth and life-history strategies of 29 pine (*Pinus*) species. *Am Naturalist* 159:396–419.
- Eggemeyer KD, Awada T, Wedin DA, Harvey FE, Zhou XH (2006) Ecophysiology of two native invasive woody species and two dominant warm-season grasses in the semiarid grasslands of the Nebraska sandhills. *Int J Plant Sci* 167:991–999.
- Richardson DM, Bond WJ (1991) Determinants of plant distribution—evidence from pine invasions. *Am Naturalist* 137:639–668.
- Fagan WF, et al. (2005) When can herbivores slow or reverse the spread of an invading plant? A test case from Mount St. Helens. *Am Naturalist* 166:669–685.
- Callaway R, Thelen G, Rodriguez A, Holben W (2004) Soil biota and exotic plant invasion. *Nature* 427:731–733.
- Klironomos JN (2002) Feedback with soil biota contributes to plant rarity and invasiveness in communities. *Nature* 417:67–70.
- Callaway RM, Aschehoug ET (2000) Invasive plants versus their new and old neighbors: A mechanism for exotic invasion. *Science* 290:521–523.
- Kolar CS, Lodge DM (2001) Progress in invasion biology: Predicting invaders. *Trends Ecol Evol* 16:199–204.
- Gravuer K, Sullivan JJ, Williams PA, Duncan RP (2008) Strong human association with plant invasion success for Trifolium introductions to New Zealand. *Proc Natl Acad Sci USA* 105:6344–6349.
- Pastor J (2008) *Mathematical Ecology of Populations and Ecosystems* (Blackwell, Oxford, UK).
- McKinley DC, Blair JM (2008) Woody plant encroachment by *Juniperus virginiana* in a mesic native grassland promotes rapid carbon and nitrogen accrual. *Ecosystems* 11:454–468.
- Vitousek PM, Howarth RW (1991) Nitrogen limitation on land and in the sea—how can it occur? *Biogeochemistry* 13:87–115.

17. Wedin DA, Tilman D (1993) Competition among grasses along a nitrogen gradient: Initial conditions and mechanisms of competition. *Ecol Monogr* 63:199–229.
18. Berendse F, Oudhof H, Bol J (1987) A comparative study on nutrient cycling in wet heathland ecosystems. *Oecologia* 74:174–184.
19. Wedin D (2004) C4 grasses: Resource use, ecology, and global change. *Warm Season (C4) Grasses*, eds Moser LE, Burson BL, Sollenberger LE (ASA, CSSA, SSSA, Madison), pp 15–50.
20. Reich PB, Walters MB, Ellsworth DS (1997) From tropics to tundra: Global convergence in plant functioning. *Proc Natl Acad Sci USA* 94:13730–13734.
21. James JJ (2008) Leaf nitrogen productivity as a mechanism driving the success of invasive annual grasses under low and high nitrogen supply. *J Arid Environ* 72:1775–1784.
22. Funk JL, Vitousek PM (2007) Resource-use efficiency and plant invasion in low-resource systems. *Nature* 446:1079–1081.
23. Onoda Y, Hikosaka K, Hirose T (2004) Allocation of nitrogen to cell walls decreases photosynthetic nitrogen-use efficiency. *Funct Ecol* 18:419–425.
24. Pons TL, Westbeek MHM (2004) Analysis of differences in photosynthetic nitrogen-use efficiency between four contrasting species. *Physiol Plant* 122:68–78.
25. Mack MC, D'Antonio CM (2003) Exotic grasses alter controls over soil nitrogen dynamics in a Hawaiian woodland. *Ecol Appl* 13:154–166.
26. Sage RF, Wedin DA, Li M (1999) The biogeography of C4 photosynthesis: Patterns and controlling factors. *C4 Plant Biology*, eds Sage RF, Monson RK (Academic, San Diego), pp 313–373.
27. Knops JMH, Bradley KL, Wedin DA (2002) Mechanisms of plant species impacts on ecosystem nitrogen cycling. *Ecol Lett* 5:454–466.
28. Hughes RF, Denslow JS (2005) Invasion by a N2-fixing tree alters function and structure in wet lowland forests of Hawaii. *Ecol Applic* 15:1615–1628.
29. Vitousek PM, Walker L, Whiteaker L, Mueller-Dombois D, Matson P (1987) Biological invasion by *Myrica faya* alters ecosystem development in Hawaii. *Science* 238:802–804.
30. Sperry LJ, Belnap J, Evans RD (2006) *Bromus tectorum* invasion alters nitrogen dynamics in an undisturbed arid grassland ecosystem. *Ecology* 87:603–615.
31. Hawkes CV, Wren IF, Herman DJ, Firestone MK (2005) Plant invasion alters nitrogen cycling by modifying the soil nitrifying community. *Ecol Lett* 8:976–985.
32. Aerts R (1999) Interspecific competition in natural plant communities: Mechanisms, trade-offs and plant-soil feedbacks. *J Exp Bot* 50:29–37.
33. Chapin F, Matson P, Mooney HA (2002) Terrestrial plant nutrient use. *Principles of Terrestrial Ecosystem Ecology*, eds Chapin F, Matson P, Mooney HA (Springer-Verlag, New York), pp 176–196.
34. Dovicak M, Frelich LE, Reich PB (2005) Pathways in old-field succession to white pine: Seed rain, shade, and climate effects. *Ecol Monogr* 75:363–378.
35. Inouye RS, Allison TD, Johnson NC (1994) Old field succession on a Minnesota sand plain—effects of deer and other factors on invasion by trees. *Bull Torrey Botanical Club* 121:266–276.
36. Tilman D (1984) Plant dominance along an experimental nutrient gradient. *Ecology* 65:1445–1453.
37. Bormann BT et al. (1993) Rapid N2 fixation in pines, alder, and locust—evidence from the sandbox ecosystem study. *Ecology* 74:583–598.
38. de Koning GHJ, Veldkamp E, Lopez-Ulloa M (2003) Qualification of carbon sequestration in soils following pasture to forest conversion in northwestern Ecuador. *Global Biogeochem Cycles* 17:1098–1110.
39. Jackson RB, Banner JL, Jobbagy EG, Pockman WT, Wall DH (2002) Ecosystem carbon loss with woody plant invasion of grasslands. *Nature* 418:623–626.
40. Craine JM, Fargione J, Sugita S (2005) Supply pre-emption, not concentration, is the mechanism of competition for nutrients. *New Phytol* 166:933–940.
41. D'Antonio CM, Hughes RF, Vitousek PM (2001) Factors influencing dynamics of two invasive C4 grasses in seasonally dry Hawaiian woodlands. *Ecology* 82:89–104.
42. Leishman MR, Thomson VP (2005) Experimental evidence for the effects of additional water, nutrients and physical disturbance on invasive plants in low fertility Hawkesbury Sandstone soils, Sydney, Australia. *J Ecol* 93:38–49.
43. Reed HE, Seastedt TM, Blair JM (2005) Ecological consequences of C4 grass invasion of a C4 grassland: A dilemma for management. *Ecol Appl* 15:1560–1569.
44. Blumenthal D (2005) Ecology—interrelated causes of plant invasion. *Science* 310:243–244.
45. Grigal DF, Chamberlain LM, Finney HR, Wroblewski DW, Gross ER (1974) *Soils of the Cedar Creek Natural History Area* (University of Minnesota Agriculture Experiment Station, St. Paul).
46. Wedin DA, Tilman D (1990) Species effects on nitrogen cycling: A test with perennial grasses. *Oecologia* 84:433–441.
47. Hart SC, Stark JM, Davidson EA, Firestone MK (1994) Nitrogen mineralization, immobilization, and nitrification. *Methods of Soil Analysis Part 2—Microbiological and Biochemical Properties*, eds Weaver R, Angle J, Bottomley P (Soil Sci Society of America, Madison), Vol 2, pp 985–1018.
48. Berendse F, Aerts R (1987) Nitrogen-use-efficiency: A biological meaningful definition. *Funct Ecol* 1:293–296.

Supporting Information

Laungani and Knops 10.1073/pnas.0900921106

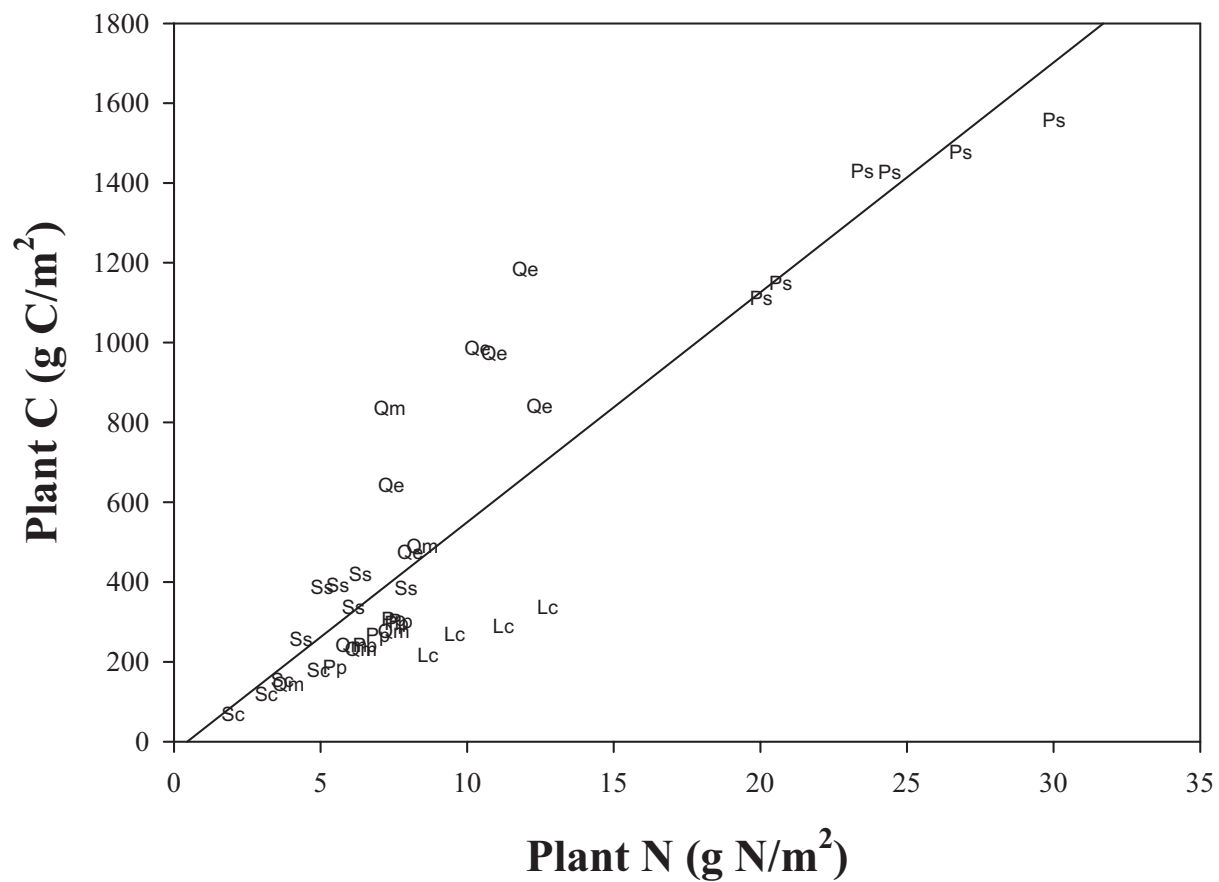


Fig. S1. Regression between standing plant nitrogen pool and standing plant carbon pool ($P < 0.01$, $R^2 = 0.90$). For species abbreviations, please refer to Fig. 2.

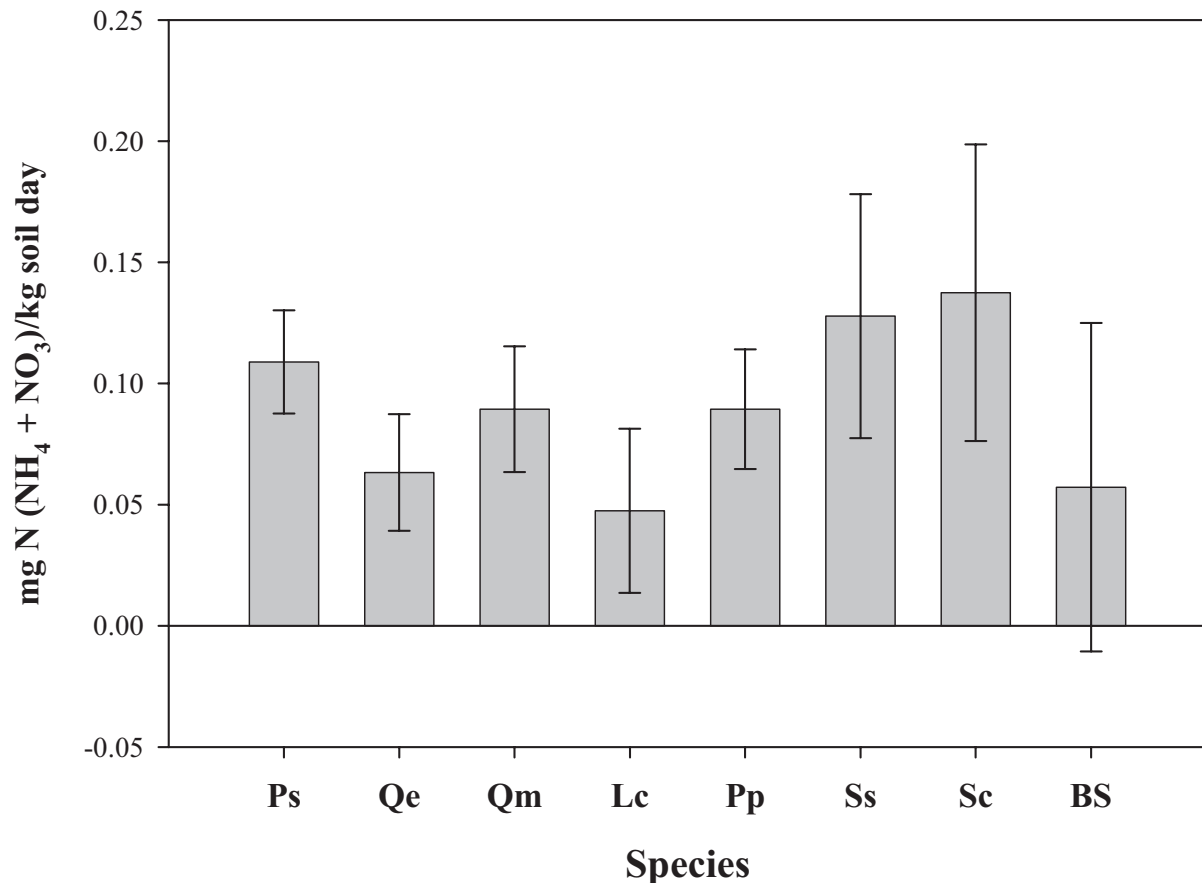


Fig. S2. Seasonal average of *in situ* net N mineralization [mg (NH₄ + NO₃)/kg soil/day]. Average was taken over three sampling periods (July, August, and September 2006). Net N mineralization *in situ* assays were carried out in 1-month intervals for each sampling period. Species differences in net N mineralization were examined using one-way ANOVA. No significant differences were found among species ($P > 0.05$).

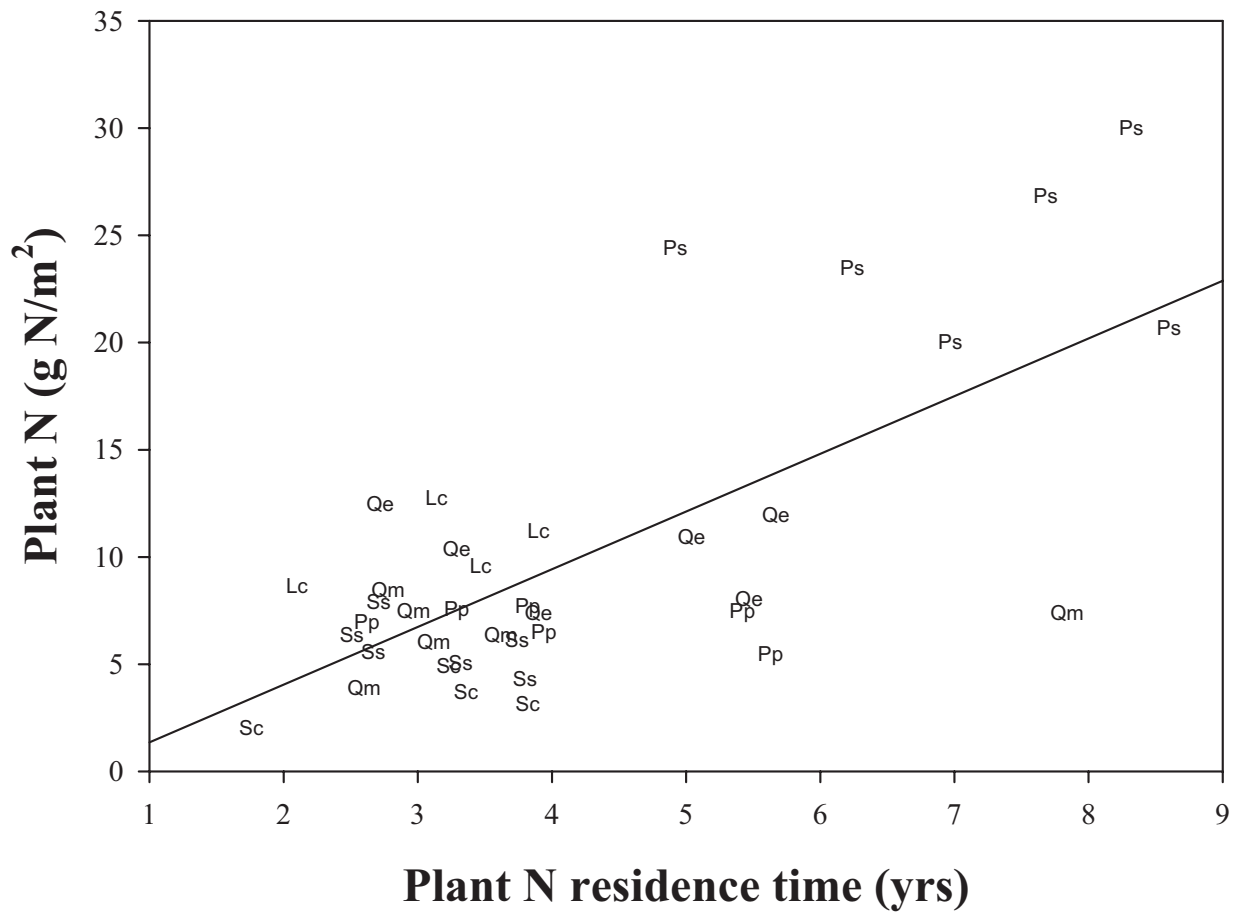


Fig. S3. Regression between plant nitrogen residence time and standing plant nitrogen pool ($P < 0.01$, $R^2 = 0.49$). For species abbreviations, please refer to Fig. 2.

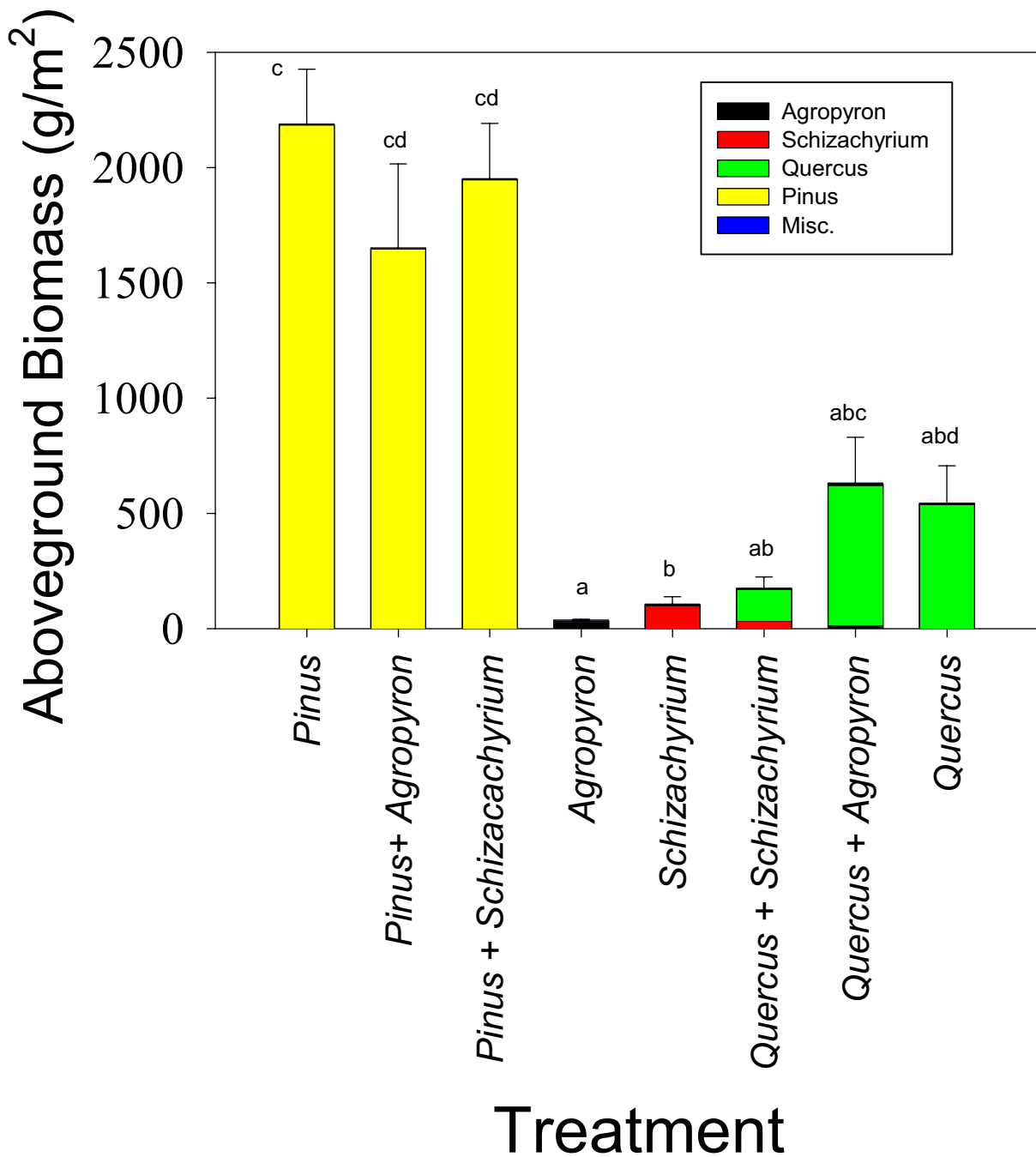


Fig. S4. Mean (\pm 1 SE) above-ground standing biomass of a competition experiment of *Pinus strobus*, *Quercus ellipsoidalis*, *Schizachyrium scoparium*, and *Agropyron repens*. *Pinus strobus* and *Q. ellipsoidalis* were established in monoculture and in competition with either *A. repens* or *S. scoparium*. Biomass was sampled in 1996 after six growing seasons; pines were planted as 1-year-old seedlings; and all other species were seeded in October 1989 into six replicated 1.5 \times 2.7 m plots for each treatment. Treatments are significantly different (data Ln transformed, one-way ANOVA, $df = 7$; $F = 72.7$, $P < 0.001$) and treatments with a different letter are $P < 0.05$ in a Tukey *post hoc* comparison.

Table S1. Backwards elimination regression of plant carbon pool, with plant nitrogen pool and the carbon gain per unit nitrogen as predictors

Factor	Standardized β	F	P
Plant nitrogen pool	0.896	11.9	0.000
Carbon gain per unit nitrogen		Eliminated	

Overall regression $N = 38$, $F = 141$, $R^2 = 0.90$ $P = 0.000$. Carbon gain per unit of nitrogen was not significant ($P = 0.977$) and was eliminated.

Table S2. Backwards elimination regression of plant nitrogen pool, with plant nitrogen pool and the carbon gain per unit nitrogen as predictors

Factor	Standardized β	F	P
Ecosystem nitrogen losses		Eliminated	
Nitrogen fixation		Eliminated	
Gross nitrogen mineralization		Eliminated	
Nitrogen residence time	0.702	5.9	0.000

Overall regression $N = 38$, $F = 34.9$, $R^2 = 0.49$, $P = 0.000$. The three eliminated variables all had $P > 0.2$.