

1-1996

# The Outlook for Nebraska Through 1997

John Austin  
*Bureau of Business Research*

Follow this and additional works at: <http://digitalcommons.unl.edu/bbrbin>

---

Austin, John, "The Outlook for Nebraska Through 1997" (1996). *Business in Nebraska*. 136.  
<http://digitalcommons.unl.edu/bbrbin/136>

This Article is brought to you for free and open access by the Bureau of Business Research at DigitalCommons@University of Nebraska - Lincoln. It has been accepted for inclusion in Business in Nebraska by an authorized administrator of DigitalCommons@University of Nebraska - Lincoln.

# Business in Nebraska

Volume 51, No. 606

presented by Bureau of Business Research (BBR)

January, 1996

## THE OUTLOOK FOR NEBRASKA THROUGH 1997

John Austin

The overall outlook for Nebraska over the next two years calls for continued moderate growth in employment, income, and retail sales. Tables 1 and 2 present an overview of the forecasts.

The gain in total employment in 1995 was 2.3 percent. Employment will increase 1.7 percent and 1.5 respectively in 1996 and 1997.

The gains in total employment will add 14,000 jobs in 1996 and 12,600 jobs in 1997.

Net taxable retail sales grew at about five percent in 1995. In 1996 and 1997, net taxable retail sales increases will closely match gains in total personal income.

Inflation adjusted gains in personal income and retail sales will be slightly more than two percent in 1996 and 1997.

Total personal income grew just under five percent in 1995. Increases will stay in the five percent area through 1997.

The increases in per capita income will be just over \$970 per year, over the next two years.

### Employment

It is evident that 1994 was the best year for employment gains thus far in the 1990s. Increases in employment (jobs) in 1994 were led by very strong gains in the construction, durable manufacturing, retail trade and service sectors (Table 3). Total employment increased by almost 4 percent in 1994—a rate that required a strong increase in the total labor force.

Barring an increase in the influx of people into the state, future labor shortages will prevent a recurrence of job increases of that magnitude through the remainder of the decade. The modest employment gains expected in

### Fast Facts

#### Expanded Data Coverage!!

With this issue, BBR introduces expanded coverage of retail sales, employment, and agricultural data. See inside for details.

Nebraska's 1992-94 median household income averaged \$31,779—second only to Colorado's median household income among bordering states.

Nebraska's 1992-94 poverty rate averaged 9.9 percent—equalling Colorado's rate as the lowest among adjacent states. Missouri's poverty rate ranked highest at 15.8 percent.

**Table 1—Summary of State Projections: Employment, Personal Income, and Retail Sales**

	1990	1991	1992	1993	1994	1995	1996	1997
Total Employment*	730,026	739,212	750,153	767,212 (\$ millions)	795,486	813,889	827,902	840,538
Personal Income **	27,470	28,689	30,774	31,780	33,795	35,461	37,292	39,154
Total Net Taxable Retail Sales***	1,029	1,062	1,113	1,181	1,268	1,333	1,401	1,471
Motor Vehicle Sales	127	120	125	142	151	155	161	170
Other Sales	902	942	988	1,039	1,117	1,178	1,239	1,301

\*Number of Jobs

\*\*Annual Totals

\*\*\*Annual Averages of Monthly Sales

1996 and 1997, however, are only slightly below the long-term average annual growth rate of 2 percent from 1972 to 1994 and therefore are sustainable for the long term.

Table 4 compares employment growth from January to October of 1995 to growth in the same period in 1994. Three sectors reported decreases: construction and mining; federal government; and local government. Preliminary 1995 data indicate a decrease in construction activity. The data probably reflect late starts due to poor weather in the early spring. Based on the strength of ad hoc reports, we expect construction employment to show a slight increase in 1995 when data is revised.

The contraction in local government employment was driven by employment decreases in the urban area (defined as Douglas, Sarpy, and Lancaster counties). The federal government contraction was concentrated in the nonurban area.

The most rapid employment growth in 1995 occurred in the durable manufacturing sector, followed closely by the service sector. Durable manufacturing job growth was higher in the urban area, but growth in the nonurban area was substantial. Growth in service sector employment occurred primarily in the urban area.

Table 4 also displays the share of nonfarm employment concentrated in the urban area in 1994. Although less than half of the state's 1990 population resided in the urban area, only three sectors had less than a 50 percent share of employment concentrated in the urban area: the two manufacturing sectors and local government.

Turning to the employment outlook for the next two years:

- Construction employment will level off in 1996 and then decrease slightly.
- Government employment will contract more slowly, or level off.
- The growth rate of durable manufacturing jobs will slow, but remain positive.
- With new bank consolidations occurring in the state, total jobs in the finance, insurance and real estate (FIRE) sector will decrease by 1997.
- The two largest employers, the service and retail trade sectors, will continue to grow at rates above the state's total employment average. Employment in both sectors is characterized by a large share of part-time jobs.

**Table 2—Summary of State Projections: Average Annual Growth Rates in Employment, Personal Income, and Retail Sales**

	1990	1991	1992	1993	1994	1995	1996	1997
	(percent)							
Total Employment	3.1	1.3	1.5	2.3	3.7	2.3	1.7	1.5
Personal Income	8.7	4.4	7.3	3.3	6.3	4.9	5.2	5.0
CPI	5.4	4.2	3.0	3.0	2.6	2.9	2.8	2.8
Total Net Taxable Retail Sales	4.3	3.2	4.8	6.1	7.4	5.2	5.1	5.0
Motor Vehicle Sales	0.9	-5.8	4.0	13.7	6.7	2.7	4.0	5.0
Other Sales	4.8	4.5	4.9	5.1	7.5	5.5	5.2	5.0

# Personal Income

Five percent annual gains will characterize total personal income growth and its major component, wages and salaries, in 1996 and 1997.

Total personal income growth in 1995 was dampened by agricultural income. Revisions to the farm income series have been severe. In July, the Bureau of Economic Analysis (BEA) reported that (net) farm income had decreased 20 percent in 1994. BEA's October update indicated an 11 percent gain. Some analysts believe that the original report of a decrease in 1994 is more defensible than the more recently reported increase. Such a moving target leaves doubt about the accuracy of the historical farm income series and how best to forecast it. The approach of the Nebraska Business Forecast Council was to estimate the correct level of farm income rather than to focus on rates of change. It is estimated that farm income will be \$2.2, and \$2.3 billion respectively in 1996 and 1997. At such levels, farm income will remain below the 1992 figure, even in nominal terms.

Growth in two of the remaining components of personal income, transfer payments and other labor income, is expected to slow through 1997. The slowing of transfer payments reflects expected readjustments in levels of federal government medical cost subsidies. While other labor income (principally benefits paid to wage and salary workers) increased sharply in years past, more employers are asking

employees to increase their participation through co-payments or increased premiums.

The remaining component of personal income, proprietors income, consists of two parts: farm and nonfarm income. The growth in farm proprietors income will closely follow the pattern of total farm income. Gains in nonfarm proprietors income, which is earned by Nebraska's small businesses, will stay slightly above five percent through 1997.

## Net Taxable Retail Sales

Gains in total net taxable retail sales will be near five percent per year in 1996 and 1997. Those increases will be close to the historical annual average since 1984. The low rates of inflation expected over the next two years will place real gains slightly above two percent.

The growth in motor vehicle sales slowed substantially from 1993 to 1995. Sales will rebound slightly in 1996 and 1997, but the gains will be lower than the historical annual average of 6.5 percent experienced since 1972.

Other retail sales will increase in step with total personal income. The expected gains through 1997 are slightly below the historical annual average of 5.4 percent since 1984, the first full year after food was removed from taxation.

**Table 3—Number of Jobs and Percent Change by Industry**  
(not seasonally adjusted)

### Annual Averages (whole numbers)

	Const & Mining	Durables	Nondurables	TCU	Retail Trade	Wholesale Trade	FIRE	Services	Fed Gov't	State & Local Gov't	Total
1990	28,596	48,522	49,286	46,276	134,145	53,392	48,426	177,966	18,040	125,378	730,026
1991	28,728	47,485	52,119	47,414	135,642	52,567	48,576	181,052	17,416	128,213	739,212
1992	29,760	46,922	53,791	47,165	137,457	52,362	49,429	185,605	17,076	130,587	750,153
1993	31,778	48,752	55,032	47,338	141,160	51,998	50,506	191,681	17,312	131,655	767,212
1994	34,772	51,948	56,992	48,278	147,072	51,882	51,541	201,872	17,198	133,931	795,486
1995	35,294	54,286	58,132	49,967	150,749	52,920	52,314	209,947	16,751	133,529	813,889
1996	35,294	55,643	59,004	50,967	153,764	53,542	52,314	217,295	16,550	133,529	827,902
1997	35,199	56,199	59,889	51,476	156,839	54,165	51,791	224,900	16,550	133,529	840,538

### Percent Changes

	Const & Mining	Durables	Nondurables	TCU	Retail Trade	Wholesale Trade	FIRE	Services	Fed Gov't	State & Local Gov't	Total
1991	0.5	-2.1	5.7	2.5	1.1	-1.5	0.3	1.7	-3.5	2.3	1.3
1992	3.6	-1.2	3.2	-0.5	1.3	-0.4	1.8	2.5	-2.0	1.9	1.5
1993	6.8	3.9	2.3	0.4	2.7	-0.7	2.2	3.3	1.4	0.8	2.3
1994	9.4	6.6	3.6	2.0	4.2	-0.2	2.0	5.3	-0.7	1.7	3.7
1995	1.5	4.5	2.0	3.5	2.5	2.0	1.5	4.0	-2.6	-0.3	2.3
1996	0.0	2.5	1.5	2.0	2.0	1.2	0.0	3.5	-1.2	0.0	1.7
1997	-0.3	1.0	1.5	1.0	2.0	1.2	-1.0	3.5	0.0	0.0	1.5

**Table 4—Percent Change in Employment:  
January - October 1995 vs January - October 1994**

Category	State Rate	Nonurban Rate	Urban Rate <sup>1</sup>	Urban Share of Employment 1994
Nonfarm Emp (W&S)	2.1	1.5	2.6	57.3
Construction & Mining	-3.5	-5.4	-2.1	57.6
Durable Goods	4.3	3.3	5.8	42.1
Nondurable Goods	2.1	2.6	1.5	46.2
TCU <sup>2</sup>	3.2	4.5	2.5	63.2
Retail	2.5	3.7	1.5	53.3
Wholesale	2.0	1.1	2.8	53.1
FIRE <sup>3</sup>	1.6	2.3	1.4	75.8
Services	4.0	0.0	6.0	66.7
Federal Gov't	-2.6	-7.1	-0.1	64.5
State Gov't	1.1	3.3	0.3	72.4
Local Gov't	-0.7	0.5	-2.5	39.4

<sup>1</sup> Urban is defined here to include Douglas, Sarpy, and Lancaster counties  
<sup>2</sup> Transportation, Communication, and Utilities  
<sup>3</sup> Finance, Insurance, and Real Estate  
Source: Nebraska Department of Labor

We are grateful for help of the Nebraska Business Forecast Council that served during the latest round of forecasts. Group members are Ernie Goss, Department of Economics & Finance, Creighton University; Bruce Johnson, Department of Agricultural Economics, UN-L; Don Macke and Stu Miller, Nebraska Department of Economic Development;

Tom Moloney, Nebraska Department of Labor; Dan Ransdel and Franz Schwarz, Nebraska Department of Revenue; Garth Taylor, Panhandle Research and Extension Center, UN-L; Keith Turner, Department of Economics, UNO; Charles Lamphear and John Austin, Bureau of Business Research, UN-L.

**Table 5—Personal Income  
(seasonally adjusted at annual rates)**

Annual Averages (\$millions)

	Wages & Salaries	Proprietor's Income		Other Labor Income	PCSI*	DIR	Transfer Payments	Residential Adjustment	Total Income	Farm Income
		Farm	Nonfarm							
1990	14,853	2,093	1,957	1,460	-1,396	5,028	3,833	-359	27,470	2,329
1991	15,604	2,097	2,007	1,631	-1,473	5,039	4,156	-372	28,689	2,313
1992	16,553	2,164	2,135	1,853	-1,562	5,486	4,554	-407	30,774	2,367
1993	17,272	1,760	2,312	2,042	-1,653	5,562	4,902	-416	31,780	1,970
1994	18,388	1,944	2,505	2,216	-1,799	5,869	5,116	-444	33,795	2,188
1995	19,369	1,855	2,662	2,372	-1,921	6,234	5,359	-471	35,461	2,088
1996	20,337	1,954	2,811	2,536	-2,044	6,608	5,585	-497	37,292	2,200
1997	21,334	2,043	2,960	2,706	-2,170	6,992	5,814	-524	39,154	2,300

Percent Changes

1991	5.1	0.2	2.6	11.7	5.5	0.2	8.4	3.7	4.4	-0.7
1992	6.1	3.2	6.3	13.6	6.1	8.9	9.6	9.4	7.3	2.3
1993	4.3	-18.7	8.3	10.2	5.8	1.4	7.6	2.3	3.3	-16.8
1994	6.5	10.5	8.3	8.5	8.8	5.5	4.4	6.7	6.3	11.1
1995	5.3	-4.6	6.3	7.0	6.8	6.2	4.8	6.0	4.9	-4.6
1996	5.0	5.4	5.6	6.9	6.4	6.0	4.2	5.5	5.2	5.4
1997	4.9	4.5	5.3	6.7	6.2	5.8	4.1	5.5	5.0	4.5

\*Personal contribution for social insurance

Nebraska has led the nation with the lowest unemployment rate since 1990.

Among neighboring states Nebraska is expected to rank 5th in employment growth and 3rd in income growth in 1996.

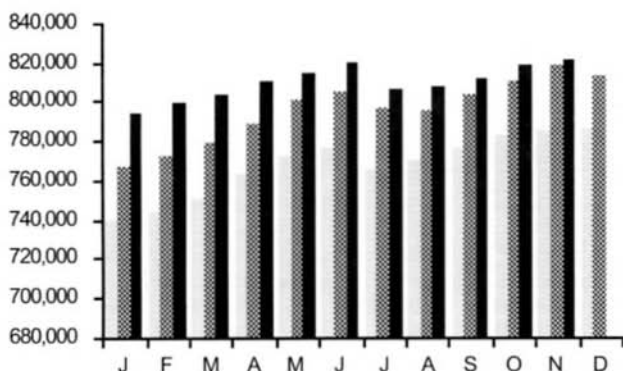
Latest U.S. Department of Labor projections to 2005 show

- total U.S. employment will grow at a much slower pace than the 1983-94 rate
- the nation's service-producing sector will lead employment growth among virtually all nonfarm wage and salary jobs
- U.S. jobs will grow at all levels of education and training, but growth will be highest in occupations requiring a bachelor's degree or above

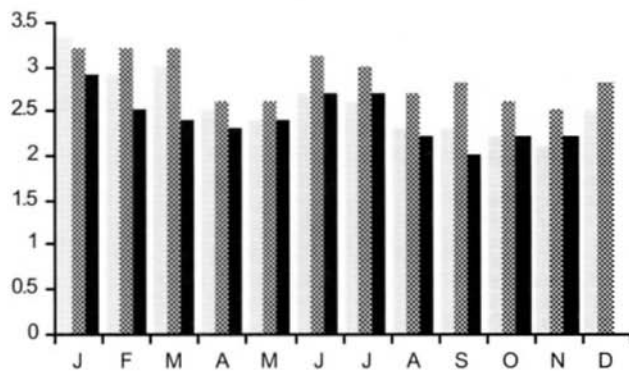
# Nebraska Stats

1993 1994 1995

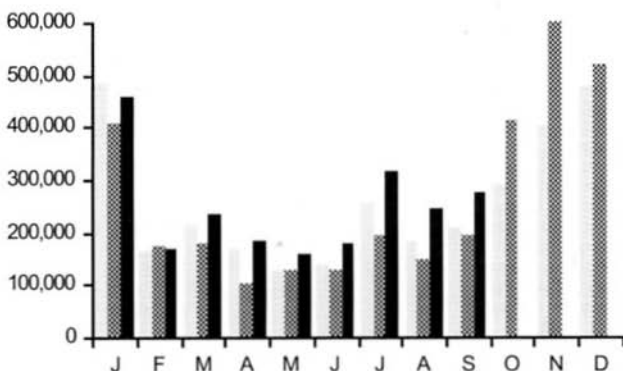
Total Nonfarm Employment



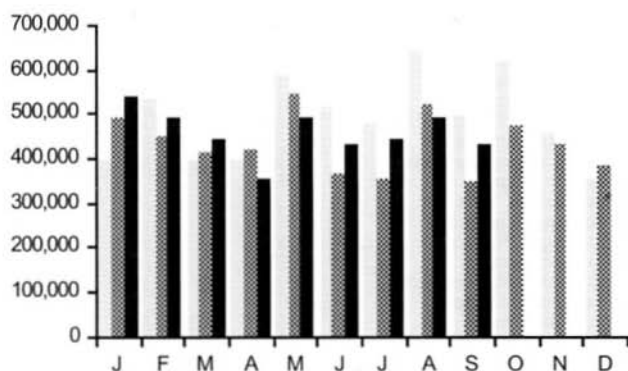
Unemployment Rate



Cash Receipts—Crops



Cash Receipts—Livestock





# Net Taxable Retail Sales\* for Nebraska Cities (\$000)

	September \$	YTD \$	YTD % Change		September \$	YTD \$
Ainsworth, Brown	1,593	15,321	-3.4	Kearney, Buffalo	26,408	235,045
Albion, Boone	1,557	14,833	8.7	Kenesaw, Adams	124	939
Alliance, Box Butte	5,646	48,812	4.9	Kimball, Kimball	1,651	14,253
Alma, Harlan	553	5,799	-4.3	La Vista, Sarpy	7,151	57,089
Arapahoe, Furnas	681	5,510	-1.8	Laurel, Cedar	470	3,044
Arlington, Washington	214	1,573	-2.1	Lexington, Dawson	7,509	63,717
Arnold, Custer	328	2,398	-1.2	Lincoln, Lancaster	176,980	1,407,217
Ashland, Saunders	1,151	8,227	-2.8	Louisville, Cass	385	3,183
Atkinson, Holt	794	6,734	0.3	Loup City, Sherman	447	4,830
Auburn, Nemaha	2,629	21,109	-1.3	Lyons, Burt	479	3,821
Aurora, Hamilton	2,550	22,577	4.7	Madison, Madison	861	5,773
Axtell, Kearney	100	725	-4.9	McCook, Red Willow	9,198	83,671
Bassett, Rock	475	4,086	-10.6	Milford, Seward	757	6,746
Battle Creek, Madison	647	5,339	-5.9	Minatare, Scotts Bluff	237	2,101
Bayard, Morrill	555	4,250	9.2	Minden, Kearney	1,728	14,643
Beatrice, Gage	9,351	79,587	4.1	Mitchell, Scotts Bluff	904	7,333
Beaver City, Furnas	155	1,136	-13.0	Morrill, Scotts Bluff	471	3,590
Bellevue, Sarpy	15,744	128,156	3.3	Nebraska City, Otoe	6,329	43,627
Benkelman, Dundy	636	4,302	-3.8	Neligh, Antelope	1,290	10,816
Bennington, Douglas	334	2,418	0.8	Newman Grove, Madison	445	2,865
Bertrand, Phelps	162	1,168	-17.3	Norfolk, Madison	25,963	222,084
Blair, Washington	5,979	51,659	0.1	North Bend, Dodge	633	4,072
Bloomfield, Knox	553	4,907	-11.2	North Platte, Lincoln	21,100	178,448
Blue Hill, Webster	471	3,269	1.2	O'Neill, Holt	3,672	34,483
Bridgeport, Morrill	1,000	8,904	2.8	Oakland, Burt	502	5,167
Broken Bow, Custer	4,666	38,466	15.8	Ogallala, Keith	4,746	45,683
Burwell, Garfield	931	6,200	-6.1	Omaha, Douglas	425,277	3,542,374
Cairo, Hall	170	1,632	-6.7	Ord, Valley	1,662	15,725
Cambridge, Furnas	926	6,876	39.2	Osceola, Polk	492	6,367
Central City, Merrick	1,664	13,144	2.4	Oshkosh, Garden	431	4,239
Ceresco, Saunders	1,079	9,180	-4.2	Osmond, Pierce	511	3,445
Chadron, Dawes	3,091	29,760	4.5	Oxford, Furnas	419	3,038
Chappell, Deuel	489	3,784	3.8	Papillion, Sarpy	2,874	32,008
Clarkson, Colfax	487	3,545	5.2	Pawnee City, Pawnee	329	2,665
Clay Center, Clay	147	2,108	-11.3	Pender, Thurston	666	5,265
Columbus, Platte	19,518	164,935	1.5	Pierce, Pierce	728	5,594
Cozad, Dawson	2,703	23,369	-3.6	Plainview, Pierce	640	5,545
Crawford, Dawes	528	4,255	-0.3	Plattsmouth, Cass	2,555	25,019
Creighton, Knox	781	8,502	4.2	Ponca, Dixon	233	4,013
Crete, Saline	3,462	30,355	-2.8	Ralston, Douglas	2,672	22,959
Crofton, Knox	483	3,148	-5.3	Randolph, Cedar	454	3,110
Curtis, Frontier	345	2,579	0.4	Ravenna, Buffalo	727	5,934
Dakota City, Dakota	716	5,064	14.9	Red Cloud, Webster	835	6,152
David City, Butler	1,497	12,500	-1.5	Rushville, Sheridan	517	4,786
Deshler, Thayer	249	1,980	1.2	Sargent, Custer	258	1,851
Dodge, Dodge	241	1,946	-4.6	Schuyler, Colfax	1,890	15,853
Doniphan, Hall	859	4,665	-3.5	Scottsbluff, Scotts Bluff	17,451	161,975
Eagle, Cass	320	3,019	5.9	Scribner, Dodge	612	3,892
Elgin, Antelope	461	3,349	-2.8	Seward, Seward	5,060	40,279
Elkhorn, Douglas	1,832	13,882	3.6	Shelby, Polk	386	2,649
Elm Creek, Buffalo	333	1,899	-19.1	Shelton, Buffalo	345	5,056
Elwood, Gosper	351	3,411	-0.1	Sidney, Cheyenne	7,118	55,251
Fairbury, Jefferson	2,923	25,621	-0.2	So. Sioux City, Dakota	8,524	67,681
Fairmont, Fillmore	187	1,392	-7.3	Springfield, Sarpy	222	1,646
Falls City, Richardson	2,669	20,787	2.7	St. Paul, Howard	1,153	9,841
Franklin, Franklin	595	4,184	-4.5	Stanton, Stanton	511	4,614
Fremont, Dodge	19,497	174,431	-1.7	Stromsburg, Polk	1,214	7,771
Friend, Saline	498	4,413	0.9	Superior, Nuckolls	1,450	12,633
Fullerton, Nance	560	4,669	-1.6	Sutherland, Lincoln	356	2,350
Geneva, Fillmore	1,586	14,882	2.2	Sutton, Clay	1,195	9,472
Genoa, Nance	259	2,112	-2.7	Syracuse, Otoe	1,015	8,607
Gering, Scotts Bluff	3,802	28,655	-2.4	Tecumseh, Johnson	943	8,705
Gibbon, Buffalo	794	6,289	0.6	Tekamah, Burt	991	8,773
Gordon, Sheridan	1,618	14,413	-2.3	Tilden, Madison	351	3,693
Gothenburg, Dawson	1,998	17,470	2.0	Utica, Seward	330	2,085
Grand Island, Hall	47,891	401,514	7.0	Valentine, Cherry	3,813	31,069
Grant, Perkins	988	7,673	1.7	Valley, Douglas	1,069	9,301
Gretna, Sarpy	4,085	29,730	6.9	Wahoo, Saunders	2,456	20,925
Hartington, Cedar	1,181	13,470	-2.2	Wakefield, Dixon	433	3,231
Hastings, Adams	19,832	169,992	3.3	Wauneta, Chase	360	2,627
Hay Springs, Sheridan	304	2,691	-6.3	Waverly, Lancaster	724	4,991
Hebron, Thayer	1,861	14,782	-1.4	Wayne, Wayne	3,517	25,990
Henderson, York	635	5,413	9.2	Weeping Water, Cass	719	5,438
Hickman, Lancaster	306	1,934	5.5	West Point, Cumming	3,661	28,760
Holdrege, Phelps	4,327	39,563	2.5	Wilber, Saline	493	3,991
Hooper, Dodge	297	2,402	-10.0	Wisner, Cumming	673	4,679
Humboldt, Richardson	331	3,999	-10.5	Wood River, Hall	486	3,851
Humphrey, Platte	817	5,719	-2.1	Wymore, Gage	441	3,484
Imperial, Chase	1,489	13,921	-0.5	York, York	8,271	72,157

# Net Taxable Retail Sales for Nebraska Counties (\$000)

Motor Vehicle Sales				Other Sales			Motor Vehicle Sales				Other Sales		
	September 1995	YTD	% Chg	September 1995	YTD	% Chg		September 1995	YTD	% Chg	September 1995	YTD	% Chg
Nebraska *	165,581	1,434,131	2.9	1,246,962	10,129,937	4.6	Howard	579	5,643	-2.1	1,581	12,599	-4.5
Adams	2,577	24,467	4.2	20,550	174,899	3.3	Jefferson	730	7,725	3.1	3,788	32,571	1.6
Antelope	794	7,202	-2.4	2,250	17,462	-0.6	Johnson	310	3,969	2.8	1,344	11,515	-0.3
Arthur	77	337	-36.3	106	(D)	(D)	Kearney	855	7,024	6.3	2,027	16,590	0.5
Banner	153	970	-16.2	(D)	(D)	(D)	Keith	1,047	8,940	-1.4	5,335	49,276	1.7
Blaine	26	583	-21.5	100	(D)	(D)	Keya Paha	131	923	-2.0	97	677	-8.0
Boone	617	6,688	-7.3	2,157	19,440	8.3	Kimball	589	4,228	6.7	1,705	14,585	-4.4
Box Butte	1,459	14,007	7.1	6,009	51,254	5.5	Knox	908	7,425	0.4	2,551	21,484	-3.1
Boyd	243	1,903	-4.5	718	4,884	-5.7	Lancaster	20,332	170,460	-7.3	179,173	1,421,644	6.6
Brown	315	3,058	-9.4	1,726	15,952	-3.8	Lincoln	3,052	30,270	-0.3	22,157	186,501	2.2
Buffalo	3,361	33,395	0.4	29,015	257,006	3.0	Logan	110	937	1.7	137	(D)	(D)
Burt	966	7,499	22.8	2,236	19,549	-3.0	Loup	37	714	1.4	32	(D)	(D)
Butler	800	7,581	3.7	2,102	16,745	0.2	McPherson	69	434	-29.3	(D)	(D)	(D)
Cass	2,430	23,187	5.5	5,366	47,341	1.4	Madison	3,700	30,592	6.1	28,321	240,157	6.4
Cedar	1,360	9,622	8.1	2,532	22,703	-2.9	Merrick	812	6,758	-10.8	2,229	17,535	-1.2
Chase	634	4,737	7.8	1,922	16,883	-0.8	Morrill	748	4,807	-6.6	1,589	13,495	5.1
Cherry	635	5,631	-26.9	4,103	32,854	12.0	Nance	276	3,482	3.1	875	7,055	-2.3
Cheyenne	1,170	9,712	5.3	7,507	57,625	7.4	Nemaha	575	6,714	5.0	3,000	23,705	-1.2
Clay	714	6,935	7.8	2,233	18,399	9.4	Nuckolls	704	4,770	-4.6	2,063	17,072	-6.1
Colfax	823	7,920	-1.4	2,852	22,730	-2.8	Otoe	1,560	13,555	7.6	7,791	55,633	7.7
Cuming	999	8,877	-4.0	4,973	38,014	4.8	Pawnee	290	2,129	-7.9	629	4,470	-5.5
Custer	1,081	10,320	-2.8	5,842	46,521	12.9	Perkins	403	3,521	-9.1	1,182	9,167	-0.4
Dakota	1,908	15,554	-1.1	9,960	78,671	3.8	Phelps	779	9,677	-11.4	4,642	41,808	1.7
Dawes	667	6,052	-5.9	3,620	34,025	3.8	Pierce	738	7,137	2.8	1,975	15,233	0.3
Dawson	2,035	20,883	-1.2	12,720	108,034	1.8	Platte	2,845	28,551	1.6	21,018	175,626	1.3
Deuel	170	1,809	-22.4	892	7,159	4.0	Polk	732	5,902	0.6	2,250	18,032	-5.9
Dixon	576	5,129	-10.2	838	8,230	-4.2	Red Willow	1,201	10,918	3.0	9,615	86,404	13.3
Dodge	3,350	28,575	0.7	21,596	189,041	-1.7	Richardson	876	7,692	2.1	3,447	27,226	0.1
Douglas	44,440	368,105	6.6	432,813	3,607,302	4.0	Rock	148	1,732	-10.6	507	4,211	-10.7
Dundy	278	2,507	-8.6	692	4,624	-4.6	Saline	1,357	11,362	14.8	4,927	42,031	-2.8
Fillmore	924	7,047	11.8	2,524	22,474	3.3	Sarpy	13,074	104,525	5.6	30,672	251,463	6.0
Franklin	413	3,063	-8.8	918	6,425	-2.4	Saunders	2,335	18,455	5.4	5,834	46,155	-2.2
Frontier	457	3,030	-5.9	749	5,299	-1.7	Scotts Bluff	3,631	31,811	-1.2	23,035	204,533	3.5
Furnas	508	5,352	-2.0	2,330	17,830	9.5	Seward	1,449	13,270	1.7	6,473	51,304	0.7
Gage	2,014	18,002	-1.4	10,447	88,243	2.6	Sheridan	604	4,898	-15.0	2,774	24,510	-3.5
Garden	249	2,383	-11.2	687	5,823	6.7	Sherman	418	3,013	-2.9	733	6,552	-3.4
Garfield	128	1,292	-13.1	931	6,200	-6.0	Sioux	193	1,602	-15.1	167	1,222	-6.9
Gosper	372	2,294	-11.3	423	3,872	2.0	Stanton	555	5,651	20.1	700	5,815	-3.9
Grant	125	837	11.6	193	1,509	-14.0	Thayer	663	5,806	14.2	2,874	21,918	-1.5
Greeley	239	2,556	-3.0	774	5,528	-2.9	Thomas	110	879	-2.9	357	2,861	18.5
Hall	5,608	46,642	2.0	49,763	415,179	6.9	Thurston	367	3,935	9.8	825	6,431	-1.6
Hamilton	967	9,742	7.6	3,007	26,047	4.3	Valley	506	4,141	14.3	1,920	17,357	-3.8
Harlan	455	3,808	-8.5	957	8,181	-2.3	Washington	2,013	18,535	10.0	6,683	56,508	0.4
Hayes	87	1,142	-3.0	90	(D)	(D)	Wayne	936	7,428	5.2	3,850	27,355	-12.9
Hitchcock	325	2,995	-0.7	710	5,315	-12.5	Webster	283	3,117	-16.5	1,424	10,374	-3.8
Holt	1,321	10,973	6.6	5,368	47,135	2.8	Wheeler	155	1,226	-0.7	78	843	-35.6
Hooker	108	584	-18.2	517	2,488	19.6	York	1,612	14,403	7.3	9,521	81,702	6.0

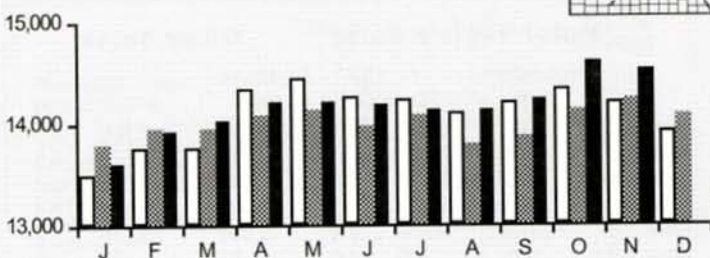
\*Totals may not add due to rounding  
(D) Denotes disclosure suppression

Source: Nebraska Department of Revenue

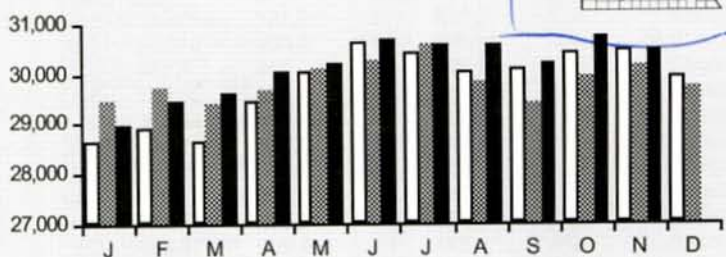


# Regional Employment—1993 to Current Month 1995

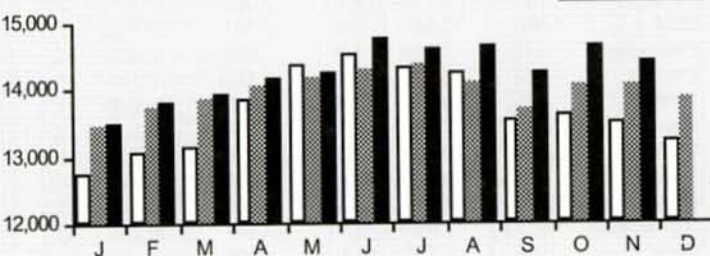
## Northwest Panhandle



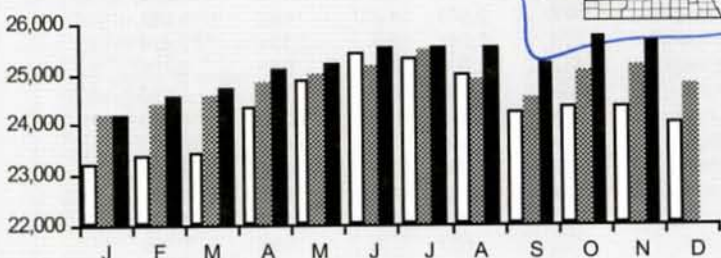
## Southwest Panhandle



## North Central



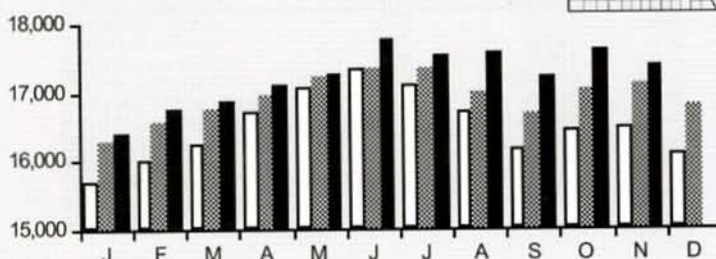
## West Central



## Southwest Central



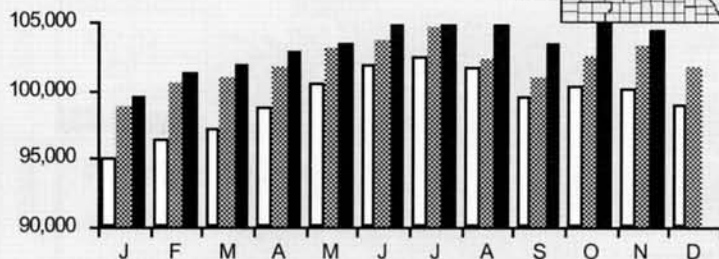
## East Central



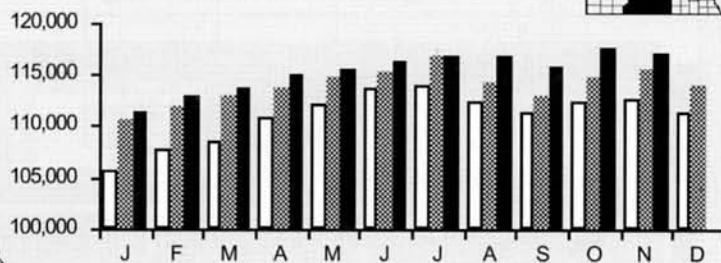
# Regional Employment—1993 to Current Month 1995

□ 1993    ▨ 1994    ■ 1995

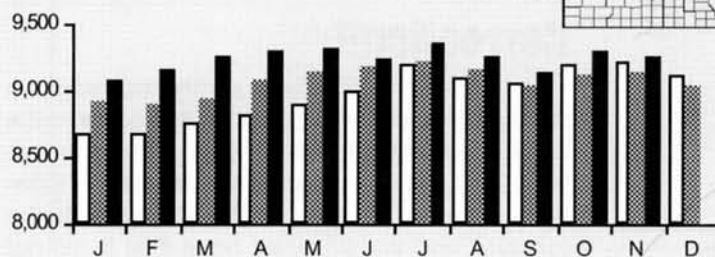
## Northeast



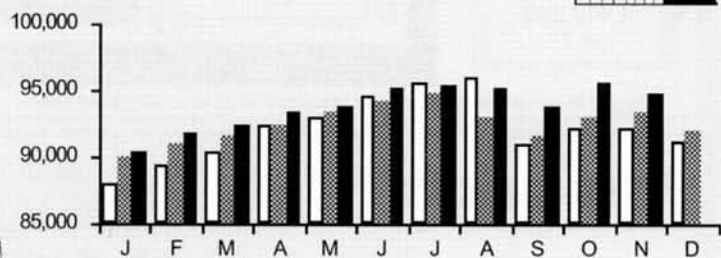
## Southeast Central



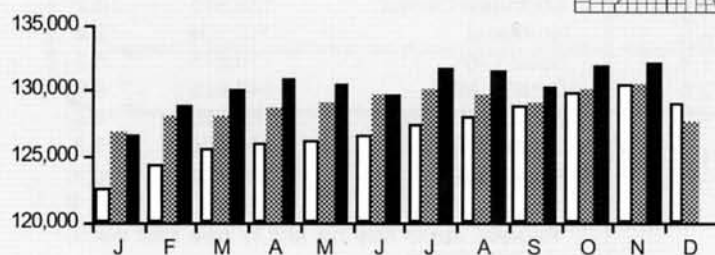
## Sioux City MSA



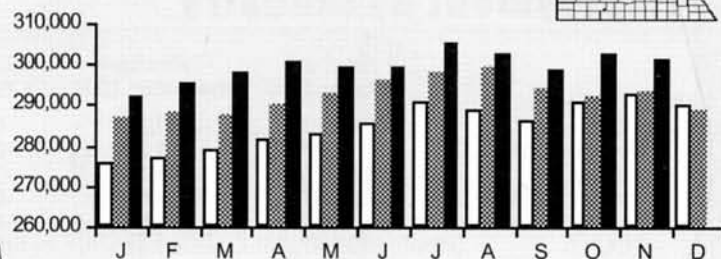
## Southeast



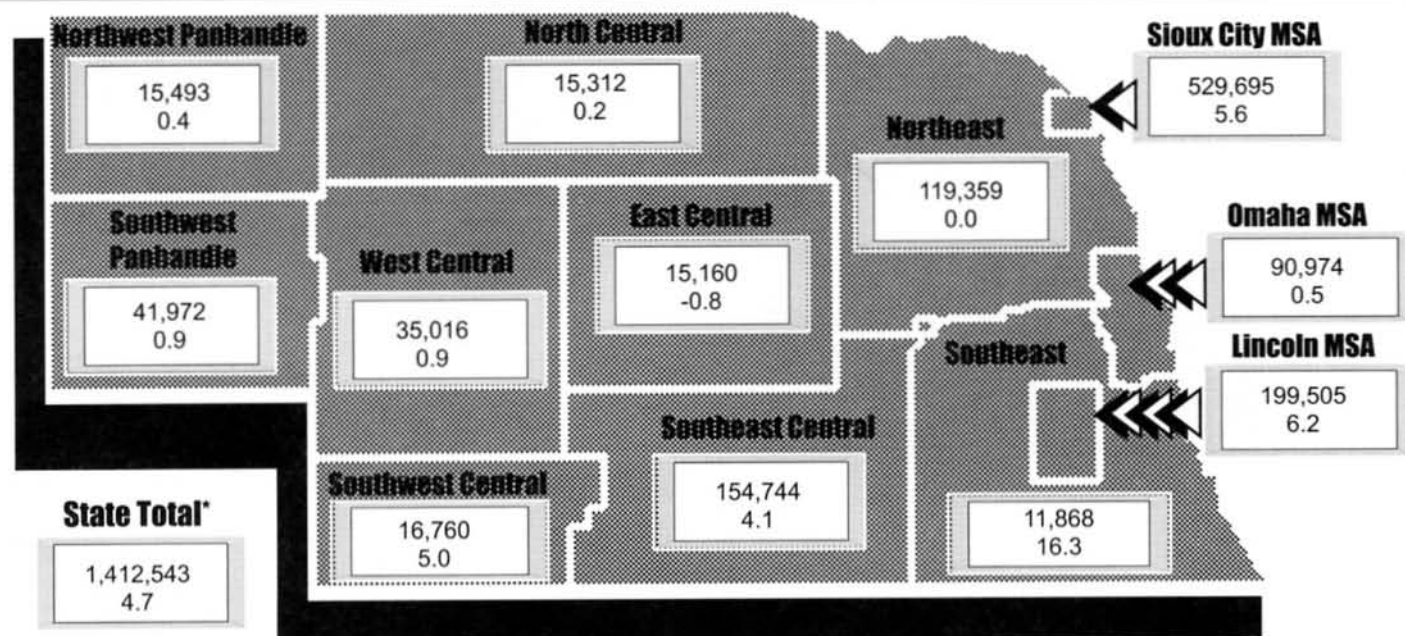
## Lincoln MSA



## Omaha MSA



# April 1995 Regional Retail Sales and Percent Change from Year Ago (\$000)



\*Regional values may not add to state total due to unallocated sales

## Price Indices

	November 1995	% Change vs Yr Ago	YTD % Change vs Yr Ago
Consumer Price Index - U* (1982-84 = 100)			
All Items	153.6	2.6	2.8
Commodities	137.2	1.5	2.1
Services	170.3	3.4	3.4

U\* = All urban consumers

Source: U.S. Bureau of Labor Statistics

## Employment by Industry

	Revised October 1995	Preliminary November 1995	% Change vs Year Ago
Place of Work			
Nonfarm	818,713	820,771	0.3
Manufacturing	111,527	111,262	-0.4
Durables	53,220	53,100	-0.5
Nondurables	58,307	58,162	-0.3
Mining & Construction	35,322	34,662	-4.0
TCU*	49,947	49,425	0.5
Trade	205,122	207,019	1.1
Retail	151,847	153,717	1.2
Wholesale	53,275	53,302	0.9
FIRE**	52,545	52,606	1.4
Services	211,460	211,866	2.6
Government	152,790	153,931	-2.8
Place of Residence			
Civilian Labor Force	898,690	894,017	1.6
Unemployment Rate	2.2	2.2	

\* Transportation, Communication, and Utilities

\*\* Finance, Insurance, and Real Estate

Source: Nebraska Department of Labor

## Correction!!

Last month, a major error occurred in the retrieval of an electronic data file that contains the state's regional retail sales data. The error has been fixed and the corrected August regional sales figures are reported below. We apologize for the mistake, and we sincerely hope that it did not cause any major problems for our readers.

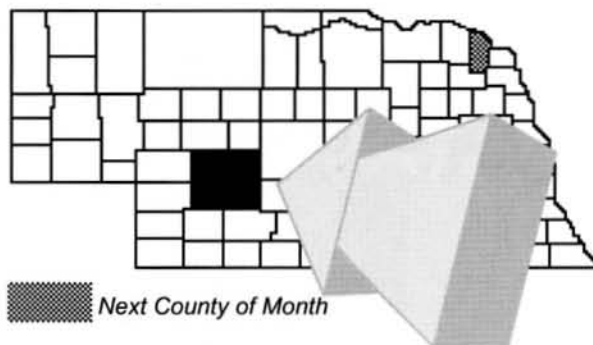
(\$thousands)	August 1995	Percent Change
Northwest Panhandle	17,221	-1.6
Southeast Panhandle	42,779	-0.1
North Central	15,594	5.4
West Central	37,075	3.3
Southwest Central	17,595	10.7
East Central	14,576	6.7
Southeast Central	158,813	3.2
Northeast	119,108	2.4
Sioux City	10,875	5.3
Omaha MSA	548,525	9.5
Southeast MSA	89,126	4.6
Lincoln MSA	196,586	7.3
State Total *	1,397,986	6.7

\*Regional values may not add to state total due to unallocated sales

## County of the Month

# Lincoln

**North Platte—County Seat**



**License plate prefix number:** 15

**Size of county:** 2,525 square miles, 3rd ranks in the state

**Population:** 32,508 in 1990, a change -10.8 of percent from 1980

**Per capita personal income:** \$18,139 in 1993, ranks 47th in the state

**Net taxable retail sales (\$000):** \$291,091 in 1994, a change of 7.8 percent from 1993; \$216,771 during January-Sept. 1995, a change of 1.9 percent from the same period one year ago

**Number of business and service establishments:** 998 in 1992, 53.6 percent had less than five employees

**Unemployment rate:** 3.6 percent in Lincoln County, 2.9 percent in Nebraska for 1994

**Nonfarm employment (1994):**

	State	Lincoln County
Wage and salary workers	795,486	13,784
	<i>(percent of total)</i>	
Manufacturing	13.7%	3.8%
Construction and Mining	4.4	3.9
TCU	6.1	15.3
Retail Trade	18.5	25.3
Wholesale Trade	6.5	4.7
FIRE	6.5	3.6
Services	25.4	24.0
Government	<u>19.0</u>	<u>19.4</u>
Total	100.0%	100.0%

### Agriculture:

Number of farms: 1,031 in 1992; 1,127 in 1987

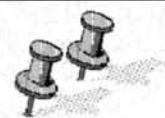
Average farm size: 1,407 acres in 1992

Market value of farm products sold: \$150.7 million in 1992 (\$146,153 average per farm)

Sources: U.S. Bureau of the Census, U.S. Bureau of Economic Analysis, Nebraska Department of Labor, Nebraska Department of Revenue



# bulletin board



**Greetings from the staff of BBR!!**



Copyright 1996 by Bureau of Business Research, University of Nebraska-Lincoln. ISSN 0007-683X.  
*Business in Nebraska* is published in ten issues per year by the Bureau of Business Research.  
Subscription orders and inquiries should be directed to Bureau of Business Research, 114 CBA,  
University of Nebraska-Lincoln 68588-0406. Annual subscription rate is \$10.

University of Nebraska-Lincoln—Dr. James C. Moeser, *Chancellor*  
College of Business Administration—John W. Goebel, *Dean*

## **Bureau of Business Research (BBR)**



*...business is not our only business*

Nonprofit Org.  
U.S. Postage  
PAID  
Lincoln, Nebraska  
Permit No. 46



specializes in ...

- economic impact assessment
- demographic and economic projections
- survey design
- compilation and analysis of data
- public access to information via **NU ONRAMP**

For more information on how BBR can assist you or your organization, contact us at  
402/472-2334, send e-mail to :clamehear@cbamail.unl.edu, or FAX: 402/472-3878