

University of Nebraska - Lincoln

DigitalCommons@University of Nebraska - Lincoln

Nebraska College Preparatory Academy Senior
Capstone Projects

Nebraska College Preparatory Academy

2022

The Effects Poverty Has on Education

Osmaira Molina–Carmona

Follow this and additional works at: <https://digitalcommons.unl.edu/ncpacapstone>



Part of the [Bilingual, Multilingual, and Multicultural Education Commons](#), [Other Education Commons](#), and the [Secondary Education Commons](#)

This Presentation is brought to you for free and open access by the Nebraska College Preparatory Academy at DigitalCommons@University of Nebraska - Lincoln. It has been accepted for inclusion in Nebraska College Preparatory Academy Senior Capstone Projects by an authorized administrator of DigitalCommons@University of Nebraska - Lincoln.

The Effects Poverty Has on Education

Osmaira Molina – Carmona

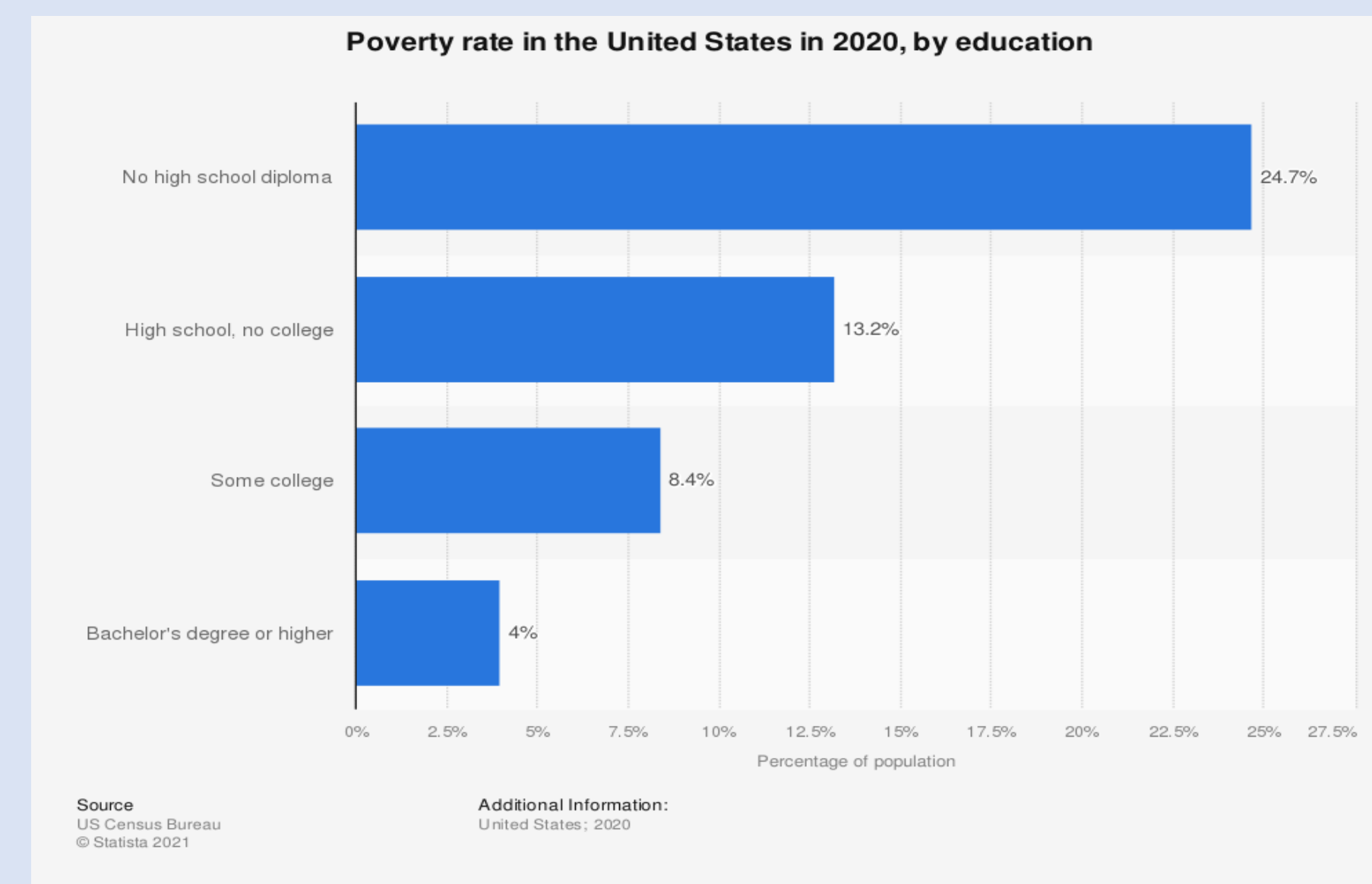
Nebraska College Preparatory Academy

Omaha South High School 2022

University of Nebraska-Lincoln

Abstract

Poverty is defined as a lack of material goods or a low level of income. Poverty is associated with a lack of sufficient income to support basic requirements such as food, clothes, and shelter. Low household income is related to reduced academic performance in children. Education gives a sense of security in life that cannot be taken away. Being well-educated increases your chances of getting a better job and opens new possibilities. According to several studies, poverty has been shown to have a direct influence on student's educational success



Statista Research Department. (2021, September 21). Poverty rate in the U.S. by education 2020. Statista. Retrieved March 31, 2022, from <https://www.statista.com/statistics/233162/us-poverty-rate-by-education/>

Key Points

- One of the most significant challenges that communities confront is poverty.
- Learning can be challenging in undeveloped countries because of a lack of educational resources in schools.
- Current policies in the United States developed to improve the education system such as No Child Left Behind, teachers evaluation based on standardized testing, and the promotion of competition, are all misleading because they either deny or ignore a substantial weight of evidence that confirms that students from disadvantaged backgrounds perform worse in school on average.
- Evidence shows that the foundation for academic success is laid in the family. Parental divorce, family conflict and adjustment challenges all contribute to a student's distress that affects their academics.

Conclusion

Living in poverty has a big impact on students. Education is the foundation to life and the way that it develops. Poverty eliminates the ability to create the foundations for the future. The more educated the population is, the fewer the poor will be, because education includes knowledge and skill, both of which contribute to higher salaries. Poverty hinders peoples understanding of their rights and they are frequently confined in this circumstance for most of their lives, with little hope for themselves or their children. Because policy initiatives do not specifically address the educational challenges faced by disadvantaged students, these policies have had little impact on overall academic achievement or closing the achievement and educational attainment gaps. The effect that poverty has on education is significant and causes major influences on student's academic success.

Citation

Alcock, P. (1993). *Understanding poverty*. Google Books. Retrieved March 1, 2022, from <https://books.google.com/books?hl=en&lr=&id=5ExdDwAAQBAJ&oi=fnd&pg=PR12&dq=povetry&ots=MdmkF7agxn&sig=9NP8M-QzbqsOKBt9MDPTDFbBNDE#v=onepage&q=povetry&f=false>

Ladd, H. F. (2012). *Education and poverty: Confronting the Evidence*. Dukespace. Retrieved March 2, 2022, from <https://dukespace.lib.duke.edu/dspace/bitstream/handle/10161/6650/Ladd%20-%20Education%20and%20Poverty.pdf;sequence=1>

Morrissey, T. W., Hutchison, L., & Winsler, A. (2014). *Family income, school attendance, and academic achievement in elementary school*. American Psychological Association. Retrieved February 28, 2022, from <https://psycnet.apa.org/record/2013-27500-001>