

University of Nebraska - Lincoln

DigitalCommons@University of Nebraska - Lincoln

---

Nebraska College Preparatory Academy Senior  
Capstone Projects

Nebraska College Preparatory Academy

---

2022

## Mental Illness: An Open Window To Adolescent Substance Abuse

Danya Torres-Lagunas

Follow this and additional works at: <https://digitalcommons.unl.edu/ncpacapstone>



Part of the [Bilingual, Multilingual, and Multicultural Education Commons](#), [Other Education Commons](#), and the [Secondary Education Commons](#)

---

This Presentation is brought to you for free and open access by the Nebraska College Preparatory Academy at DigitalCommons@University of Nebraska - Lincoln. It has been accepted for inclusion in Nebraska College Preparatory Academy Senior Capstone Projects by an authorized administrator of DigitalCommons@University of Nebraska - Lincoln.

# Mental Illness: An Open Window To Adolescent Substance Abuse

Danya Torres-Lagunas  
Nebraska College Preparatory Academy  
Omaha South High School 2022  
University of Nebraska Lincoln



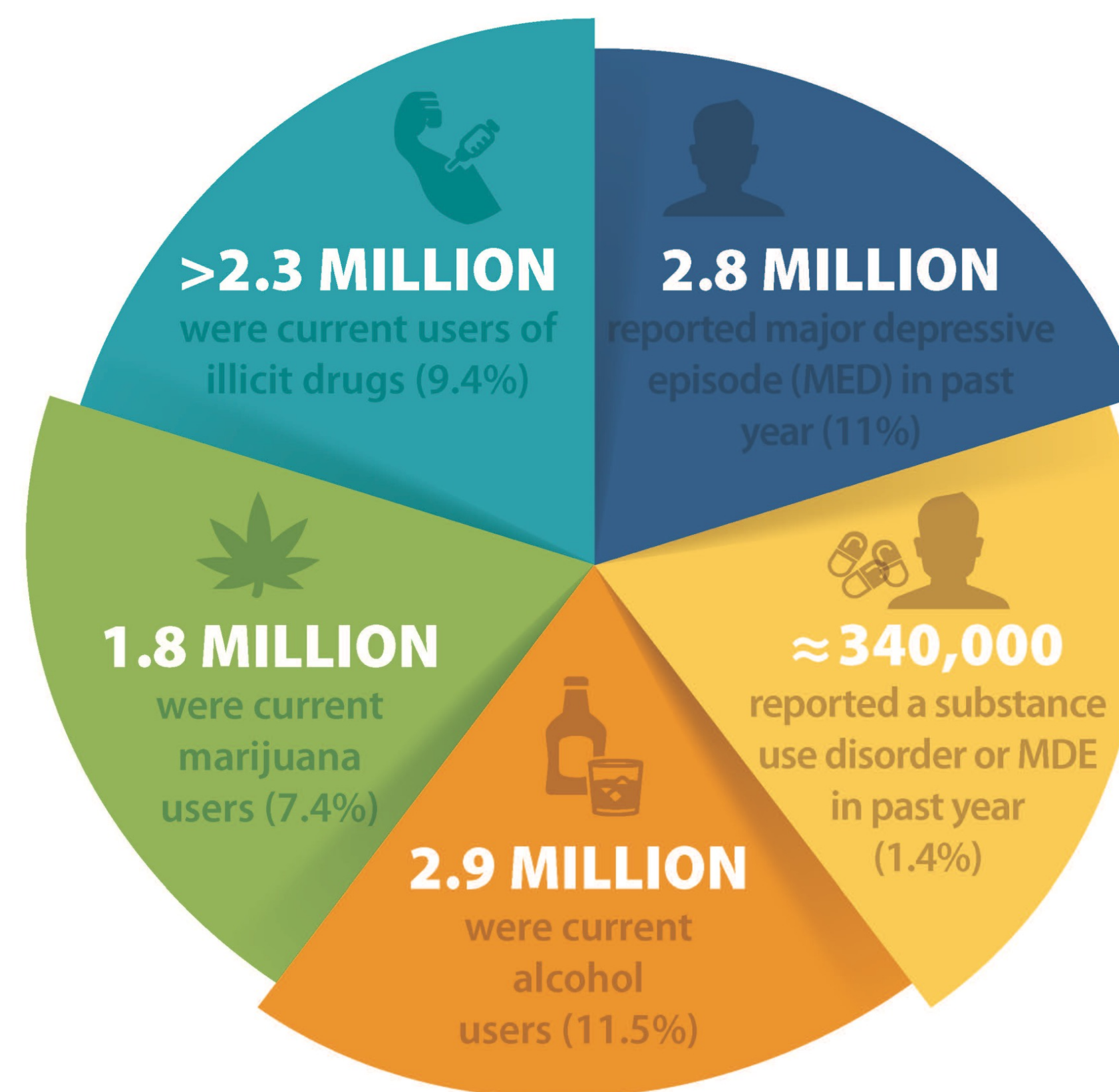
## Abstract:

Mental illness during the adolescent years comes with its own struggles and battles. Not only the social and emotional aspects of it, but also neurological and developmental effects. By looking at the early developmental stages of adolescence, preexisting factor, and previous psychiatric disorders, e.g. MDD (Major depressive disorder) we can see that there is a correlation between mental health disorders and their effect on adolescent substance abuse.

## Key Points:

- Drinking problems were 1.7 times greater in patients who had MDD (major depressive disorder).
- 79% of the drug and alcohol abusers had some sort of primary psychiatric disorder prior to the drug and alcohol abuse.

## Behavioral Health Trends in Adolescents Aged 12 to 17\*



\*2014 Data from Behavioral Health Trends in the United States: Results from the 2014 National Survey on Drug Use and Health

## Conclusion & Discussions

By examining the history of an adolescent with preexisting or current substance abuse problems, in addition to any prior mental health conditions, we can see the direct correlation between the two. We can see that teens with no prior diagnosed mental illness are less likely to engage in riskier behavior and are less prone to any sort of substance abuse.

## Works Cited:

- EVA Y. DEYKIN, DRPH, JANICE C. LEVY, MD, AND VICTORIA WELLS, MD, DRPH. *Adolescent Depression, Alcohol and Drug Abuse*, Feb. 1987.
- L. van Nimwegen<sup>1,2</sup>, L. de Haan<sup>1</sup>, N. van Beveren<sup>2</sup>, W. van den Brink<sup>1,3</sup>, D. Linszen<sup>1</sup>. *Adolescence, Schizophrenia and Drug Abuse: A Window of Vulnerability*. 2005.
- Calcano, Ercilia. "Child & Family Studies." *Child & Family Studies* | University of South Florida, 7 Apr. 2017, <http://cfs.cbcs.usf.edu/news-events/detail.cfm?id=1079>.