


1996

Annual Departures from Average Annual Precipitation in Nebraska, 1876-1995/ Annual Installation of Irrigation Wells (1937-1995)

Conservation Survey Division
University of Nebraska-Lincoln

Follow this and additional works at: <https://digitalcommons.unl.edu/conservationsurvey>

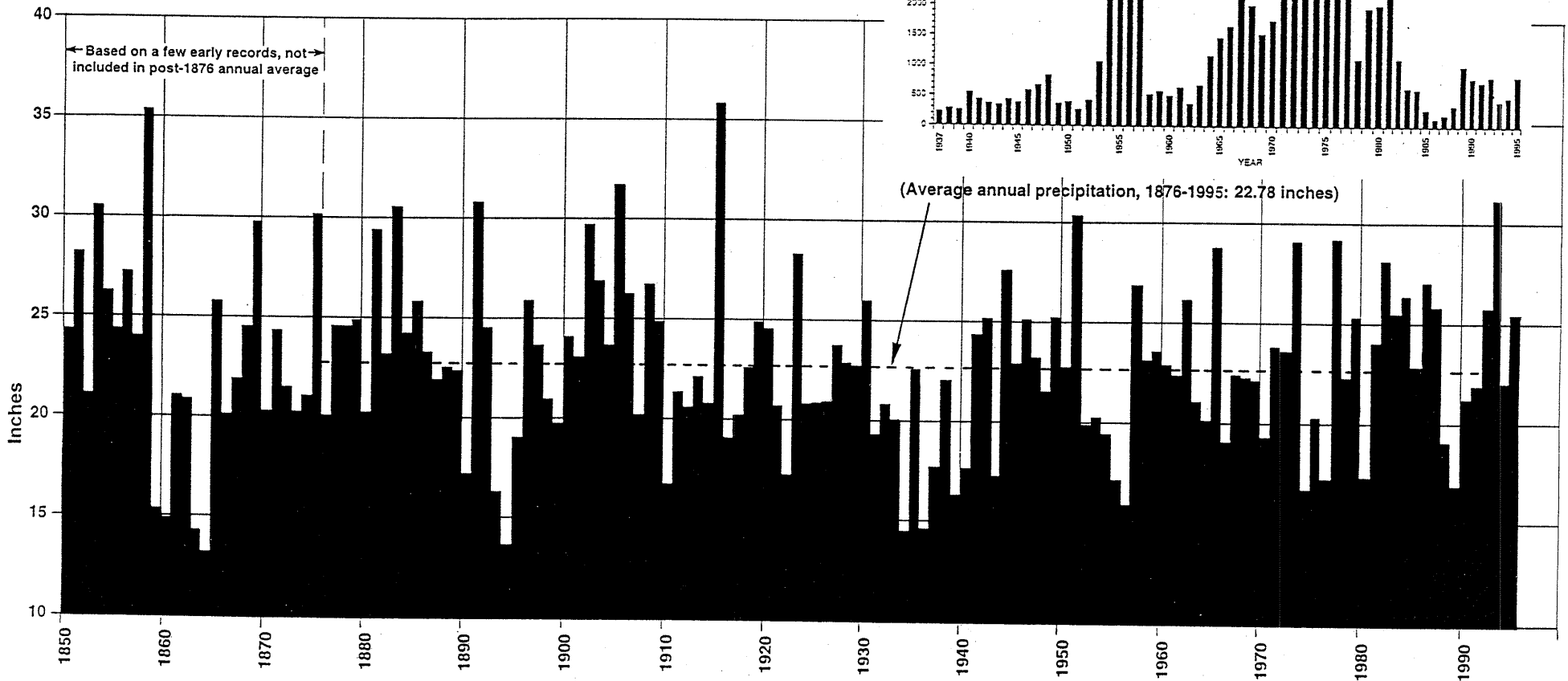
 Part of the [Geology Commons](#), [Geomorphology Commons](#), [Hydrology Commons](#), [Paleontology Commons](#), [Sedimentology Commons](#), [Soil Science Commons](#), and the [Stratigraphy Commons](#)

Division, Conservation Survey, "Annual Departures from Average Annual Precipitation in Nebraska, 1876-1995/ Annual Installation of Irrigation Wells (1937-1995)" (1996). *Conservation and Survey Division*. 195.
<https://digitalcommons.unl.edu/conservationsurvey/195>

This Article is brought to you for free and open access by the Natural Resources, School of at DigitalCommons@University of Nebraska - Lincoln. It has been accepted for inclusion in Conservation and Survey Division by an authorized administrator of DigitalCommons@University of Nebraska - Lincoln.

Annual Installation of Irrigation Wells in Nebraska 1937-1995

Average Annual Precipitation in Nebraska Showing Departures from 1876-1995



Conservation and Survey Division
Institute of Agriculture and Natural Resources
University of Nebraska-Lincoln

