

University of Nebraska - Lincoln

DigitalCommons@University of Nebraska - Lincoln

---

Nebraska Tractor Tests

Tractor Test and Power Museum, The Lester F.  
Larsen

---

January 1998

## Test 1896: Case IH CX 80/C 80 Diesel

Follow this and additional works at: <https://digitalcommons.unl.edu/tractormuseumlit>



Part of the [Applied Mechanics Commons](#)

---

"Test 1896: Case IH CX 80/C 80 Diesel" (1998). *Nebraska Tractor Tests*. 193.

<https://digitalcommons.unl.edu/tractormuseumlit/193>

This Article is brought to you for free and open access by the Tractor Test and Power Museum, The Lester F. Larsen at DigitalCommons@University of Nebraska - Lincoln. It has been accepted for inclusion in Nebraska Tractor Tests by an authorized administrator of DigitalCommons@University of Nebraska - Lincoln.

# SUMMARY OF OECD TEST 1896—NEBRASKA SUMMARY 327

## CASE IH CX 80 DIESEL

### ALSO CASE IH C80 DIESEL

### 16 SPEED

#### POWER TAKE-OFF PERFORMANCE

| Power<br>HP<br>(kW)                             | Crank<br>shaft<br>speed<br>rpm | Gal/hr<br>(l/h) | lb/hp.hr<br>(kg/kW.h) | Hp.hr/gal<br>(kW.h/l) | Mean Atmospheric<br>Conditions |
|---|--------------------------------|-----------------|-----------------------|-----------------------|--------------------------------|
| <b>MAXIMUM POWER AND FUEL CONSUMPTION</b>       |                                |                 |                       |                       |                                |
| <b>Rated Engine Speed (PTO speed-1100 rpm)</b>  |                                |                 |                       |                       |                                |
| 71.3<br>(53.2)                                  | 2200                           | 4.70<br>(17.79) | 0.464<br>(0.282)      | 15.18<br>(2.99)       |                                |
| <b>Standard Power Take-off Speed (1000 rpm)</b> |                                |                 |                       |                       |                                |
| 73.0<br>(54.4)                                  | 2000                           | 4.46<br>(16.89) | 0.431<br>(0.262)      | 16.35<br>(3.22)       |                                |
| <b>VARYING POWER AND FUEL CONSUMPTION</b>       |                                |                 |                       |                       |                                |
| 71.3<br>(53.2)                                  | 2200                           | 4.70<br>(17.79) | 0.464<br>(0.282)      | 15.18<br>(2.99)       | Air temperature                |
| 62.9<br>(46.9)                                  | 2280                           | 4.47<br>(16.93) | 0.501<br>(0.305)      | 14.05<br>(2.77)       | 70°F (21°C)                    |
| 47.5<br>(35.4)                                  | 2300                           | 3.83<br>(14.50) | 0.568<br>(0.345)      | 12.39<br>(2.44)       | Relative humidity              |
| 31.9<br>(23.8)                                  | 2314                           | 3.15<br>(11.91) | 0.693<br>(0.422)      | 10.15<br>(2.00)       | 33%                            |
| 16.1<br>(12.0)                                  | 2334                           | 2.40<br>(9.10)  | 1.048<br>(0.638)      | 6.71<br>(1.32)        | Barometer                      |
| --  | 2349                           | 1.56<br>(5.89)  | --                    | --                    | 29.5" Hg (100.0 kPa)           |

Maximum Torque - 225 lb.-ft. (305 Nm) at 1406 rpm  
 Maximum Torque Rise - 32.0%  
 Torque rise at 1800 engine rpm - 21%

#### DRAWBAR PERFORMANCE (Unballasted Front Drive Engaged)

#### FUEL CONSUMPTION CHARACTERISTICS

| Power<br>Hp<br>(kW)   | Drawbar<br>pull<br>lbs<br>(kN) | Speed<br>mph<br>(km/h) | Crank-<br>shaft<br>speed<br>rpm | Slip<br>% | Fuel Consumption<br>lb/hp.hr<br>(kg/kW.h) | Hp.hr/gal<br>(kW.h/l) | Temp. °F (°C)<br>cool-<br>ing<br>med | Barom.<br>inch<br>Hg<br>(kPa) |
|---|--------------------------------|------------------------|---------------------------------|-----------|---|-----------------------|--------------------------------------|-------------------------------|
| <b>Maximum Power 7th (1HiTA) Gear</b>                       |                                |                        |                                 |           |   |                       |                                      |                               |
| 59.3<br>(44.2)  | 4635<br>(20.62)                | 4.80<br>(7.72)         | 2198                            | 3.1       | 0.558<br>(0.340)                          | 12.59<br>(2.48)       | 180<br>(82)                          | 57<br>(14)                    |
| <b>75% of Pull at Maximum Power 7th (1HiTA) Gear</b>        |                                |                        |                                 |           |   |                       |                                      |                               |
| 45.8<br>(34.2)  | 3455<br>(15.36)                | 4.97<br>(8.00)         | 2258                            | 2.2       | 0.647<br>(0.393)                          | 10.88<br>(2.14)       | 180<br>(82)                          | 57<br>(14)                    |
| <b>50% of Pull at Maximum Power 7th (1HiTA) Gear</b>        |                                |                        |                                 |           |   |                       |                                      |                               |
| 31.3<br>(23.3)  | 2325<br>(10.35)                | 5.05<br>(8.12)         | 2274                            | 1.6       | 0.787<br>(0.479)                          | 8.93<br>(1.76)        | 174<br>(79)                          | 57<br>(14)                    |
| <b>75% of Pull at Reduced Engine Speed 8th (4LoTA) Gear</b> |                                |                        |                                 |           |   |                       |                                      |                               |
| 46.0<br>(34.3)  | 3450<br>(15.35)                | 5.00<br>(8.05)         | 2079                            | 2.1       | 0.603<br>(0.367)                          | 11.67<br>(2.30)       | 178<br>(81)                          | 59<br>(15)                    |
| <b>50% of Pull at Reduced Engine Speed 8th (4LoTA) Gear</b> |                                |                        |                                 |           |   |                       |                                      |                               |
| 31.5<br>(23.5)  | 2325<br>(10.34)                | 5.08<br>(8.18)         | 2097                            | 1.6       | 0.709<br>(0.431)                          | 9.92<br>(1.95)        | 176<br>(80)                          | 61<br>(16)                    |

**Location of Test:** DLG Testing Station for Agricultural Machinery Max - Eyth - Weg 1, D-64823 Gros-Umstadt, Germany

**Dates of Test:** October, 1998

**Manufacturer:** Case United Kingdom Limited, Doncaster, DN2 4PG, England

**FUEL and OIL:** Fuel No. 2 Diesel **Specific gravity converted to 60°/60° F (15°/15°C)** 0.845 **Fuel weight** 7.03 lbs/gal (0.843 kg/l) **Oil SAE 15W-40 API service classification** CF-4 **Transmission and hydraulic lubricant** Case Hy-Tran Plus fluid **Front axle lubricant** SAE 85W-140 gear oil

**ENGINE:** Make Perkins Diesel **Type** four cylinder vertical with turbocharger **Serial No.** AQU875481D **Crankshaft** lengthwise **Rated engine speed** 2200 **Bore and stroke** 3.74" x 5.00" (95.0 mm x 127.0 mm) **Compression ratio** 17.25 to 1 **Displacement** 243 cu in (3990 ml) **Starting system** 12 volt **Lubrication** pressure **Air cleaner** two paper elements **Oil filter** one full flow cartridge **Oil cooler** engine coolant heat exchanger for crankcase oil, radiator for hydraulic and transmission oil **Fuel filter** one paper element **Fuel cooler** radiator for pump return fuel **Muffler** vertical **Cooling medium temperature control** thermostat and variable speed fan

**CHASSIS:** **Type** front wheel assist **Serial No.** JJE 100 2102 **Tread width** rear 55.9" (1420 mm) to 75.7" (1922 mm) front 53.7" (1364 mm) to 76.0" (1930 mm) **Wheel base** 92.8" (2356 mm) **Hydraulic control system** direct engine drive **Transmission** selective gear fixed ratio with partial (2) range operator controlled powershift **Nominal travel speeds mph (km/h)** first 1.32 (2.12) second 1.59 (2.56) third 2.32 (3.73) fourth 2.80 (4.50) fifth 3.44 (5.53) sixth 4.14 (6.67) seventh 4.94 (7.95) eighth 5.39 (8.67) ninth 5.96 (9.59) tenth 6.50 (10.46) eleventh 8.70 (14.00) twelfth 10.49 (16.88) thirteenth 12.89 (20.75) fourteenth 15.55 (25.02) fifteenth 20.21 (32.52) sixteenth 24.37 (39.22) reverse 1.44 (2.31), 2.53 (4.07), 3.75 (6.04), 5.39 (8.67), 5.88 (9.46), 9.49 (15.28), 14.06 (22.63), 22.05 (35.48) **Clutch** multiple dry disc hydraulically operated by foot pedal **Brakes** wet disc hydraulically operated by two foot pedals which can be locked together **Steering** hydrostatic **Power take-off** 540 rpm at 1994 engine rpm and 1000 rpm at 2000 engine rpm **Unladen tractor mass** 8135 lb (3690 kg)

**DRAWBAR PERFORMANCE**  
**(Unballasted Front Drive Engaged)**  
**MAXIMUM POWER IN SELECTED GEARS**

| Power<br>Hp<br>(kW) | Drawbar<br>pull<br>lbs<br>(kN) | Speed<br>mph<br>(km/h) | Crank-<br>shaft<br>speed<br>rpm | Slip<br>%         | Fuel Consumption<br>lb/hp.hr<br>(kg/kW.h) | Temp.°F (°C)<br>cool-<br>ing<br>med | Barom.<br>inch<br>Hg<br>(kPa) |            |                 |
|---------------------|--------------------------------|------------------------|---------------------------------|-------------------|---|-------------------------------------|-------------------------------|------------|-----------------|
|                     |                                |                        |                                 | 2nd (1LoDD) Gear  |   |                                     |                               |            |                 |
| 35.4<br>(26.4)      | 9530<br>(42.40)                | 1.39<br>(2.24)         | 2254                            | 14.6              | 0.783<br>(0.476)                          | 8.98<br>(1.77)                      | 178<br>(81)                   | 59<br>(15) | 29.7<br>(100.5) |
|                     |                                |                        |                                 | 3rd (2LoTA) Gear  |   |                                     |                               |            |                 |
| 49.6<br>(37.0)      | 9270<br>(41.23)                | 2.01<br>(3.23)         | 2203                            | 13.8              | 0.669<br>(0.407)                          | 10.51<br>(2.07)                     | 181<br>(83)                   | 59<br>(15) | 29.7<br>(100.5) |
|                     |                                |                        |                                 | 4th (2LoDD) Gear  |   |                                     |                               |            |                 |
| 55.5<br>(41.4)      | 8880<br>(39.50)                | 2.34<br>(3.77)         | 1995                            | 8.1               | 0.568<br>(0.345)                          | 12.39<br>(2.44)                     | 181<br>(83)                   | 59<br>(15) | 29.7<br>(100.5) |
|                     |                                |                        |                                 | 5th (3LoTA) Gear  |   |                                     |                               |            |                 |
| 60.5<br>(45.1)      | 7630<br>(33.94)                | 2.97<br>(4.79)         | 2003                            | 5.3               | 0.521<br>(0.317)                          | 13.50<br>(2.66)                     | 180<br>(82)                   | 57<br>(14) | 29.7<br>(100.5) |
|                     |                                |                        |                                 | 6th (3LoDD) Gear  |   |                                     |                               |            |                 |
| 59.9<br>(44.7)      | 6205<br>(27.59)                | 3.62<br>(5.83)         | 1996                            | 4.0               | 0.525<br>(0.319)                          | 13.40<br>(2.64)                     | 180<br>(82)                   | 57<br>(14) | 29.7<br>(100.5) |
|                     |                                |                        |                                 | 7th (1HiTA) Gear  |   |                                     |                               |            |                 |
| 62.5<br>(46.6)      | 5375<br>(23.92)                | 4.36<br>(7.01)         | 1991                            | 3.2               | 0.506<br>(0.308)                          | 13.91<br>(2.74)                     | 180<br>(82)                   | 54<br>(12) | 29.7<br>(100.5) |
|                     |                                |                        |                                 | 8th (4LoTA) Gear  |   |                                     |                               |            |                 |
| 59.9<br>(44.7)      | 4710<br>(20.95)                | 4.77<br>(7.68)         | 1993                            | 2.8               | 0.525<br>(0.320)                          | 13.39<br>(2.64)                     | 180<br>(82)                   | 54<br>(12) | 29.7<br>(100.5) |
|                     |                                |                        |                                 | 9th (1HiDD) Gear  |   |                                     |                               |            |                 |
| 60.7<br>(45.3)      | 4335<br>(19.28)                | 5.26<br>(8.46)         | 1991                            | 2.7               | 0.517<br>(0.315)                          | 13.60<br>(2.68)                     | 180<br>(82)                   | 55<br>(13) | 29.7<br>(100.5) |
|                     |                                |                        |                                 | 10th (4LoDD) Gear |   |                                     |                               |            |                 |
| 57.7<br>(43.0)      | 3750<br>(16.67)                | 5.77<br>(9.28)         | 1998                            | 2.5               | 0.547<br>(0.333)                          | 12.84<br>(2.53)                     | 180<br>(82)                   | 55<br>(13) | 29.7<br>(100.5) |

**Note:** The Case IH C 80 Diesel varies from the Case IH CX 80 Diesel by chassis design and transmission options.

**REPAIRS AND ADJUSTMENTS:** No repairs or adjustments

**REMARKS:** All test results were determined from observed data obtained in accordance with official OECD test procedures. This tractor did not meet the manufacturer's claims of 37% torque rise, Cab sound level of 73.0 dB(A), nor 3 point lift capacity of 3665 lbs., optionally 5097 lbs. The performance results on this summary were taken from OECD tests conducted under the Code II Test Code procedure.

We, the undersigned, certify that this is a true summary of data from OECD Report No. **1896**, Nebraska Summary 327, November 27, 2000.

Brent T. Sampson  
 Test Engineer

L.L. Bashford  
 M.F. Kocher  
 R.D. Grisso, Jr.  
 Board of Tractor Test Engineers

| TRACTOR SOUND LEVEL WITH CAB  | Front Wheel Drive |                     |
|-------------------------------|-------------------|---------------------|
|                               | Engaged<br>dB(A)  | Disengaged<br>dB(A) |
| Maximum Sound Level           | 78.0              | 78.0                |
| At no load in 7th(1HiTA) Gear | 75.5              | 74.0                |
| Bystander                     |                   |                     |

| TRACTOR SOUND LEVEL WITHOUT CAB | Front Wheel Drive |                     |
|---------------------------------|-------------------|---------------------|
|                                 | Engaged<br>dB(A)  | Disengaged<br>dB(A) |
| At no load in 7th(1HiTA) Gear   | 86.0              | 86.0                |
| Bystander                       |                   |                     |

**TIRES AND WEIGHT**

**Rear Tires** No., size, ply & psi (kPa)  
**Front Tires** No., size, ply & psi (kPa)  
**Height of Drawbar**  
**Static Weight with operator** Rear  
 Front  
 Total

**Tested Without Ballast**

Two 18.4R34;\*\*, 12 (80)  
 Two 13.6R24;\*\*, 12 (80)  
 15.7 in (400 mm)  
 4985 lb (2260 kg)  
 3315 lb (1505 kg)  
 8300 lb (3765 kg)

## THREE POINT HITCH PERFORMANCE (OECD Static Test)

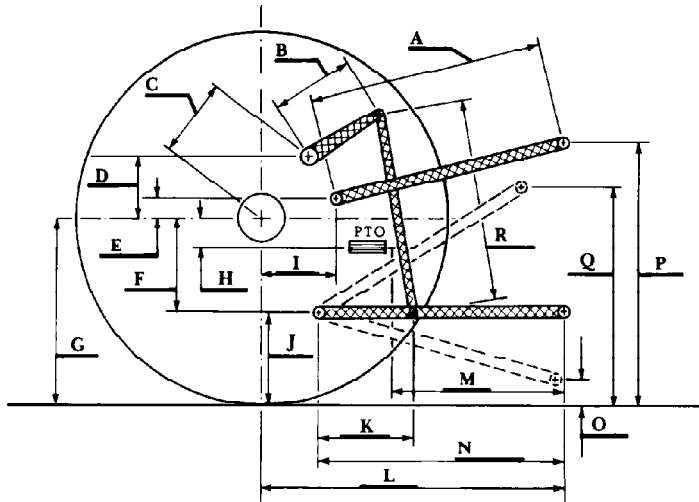
CATEGORY: II

Quick Attach: none

Maximum Force Exerted Through Whole Range: 2665 lbs (11.85 kN)  
 4000 lbs (17.80 kN) (with boost cylinder)

- i) Opening pressure of relief valve: NA
- Sustained pressure of the open relief valve: 2610 psi (180 bar)
- ii) Pump delivery rate at minimum pressure: 16.5 GPM (62.6 l/min)
- iii) Pump delivery rate at maximum
  - hydraulic power: 13.9 GPM (52.4 l/min)
  - Delivery pressure: 2305 psi (159 bar)
  - Power: 18.6 HP (13.9 kW)

### HITCH DIMENSIONS AS TESTED NO LOAD



|   | inch | mm   |
|---|------|------|
| A | 28.2 | 716  |
| B | 11.7 | 298  |
| C | 11.6 | 295  |
| D | 11.3 | 288  |
| E | 7.9  | 200  |
| F | 6.7  | 170  |
| G | 30.3 | 770  |
| H | 4.8  | 122  |
| I | 11.8 | 300  |
| J | 23.6 | 600  |
| K | 21.7 | 550  |
| L | 38.4 | 975  |
| M | 21.3 | 540  |
| N | 32.0 | 814  |
| O | 7.9  | 200  |
| P | 47.6 | 1210 |
| Q | 33.9 | 860  |
| R | 29.5 | 750  |