


1977

## Nebraska Groundwater Level (Decline & Rise) and Location of Registered Wells, 1977

Follow this and additional works at: <https://digitalcommons.unl.edu/conservationsurvey>

 Part of the [Geology Commons](#), [Geomorphology Commons](#), [Hydrology Commons](#), [Paleontology Commons](#), [Sedimentology Commons](#), [Soil Science Commons](#), and the [Stratigraphy Commons](#)

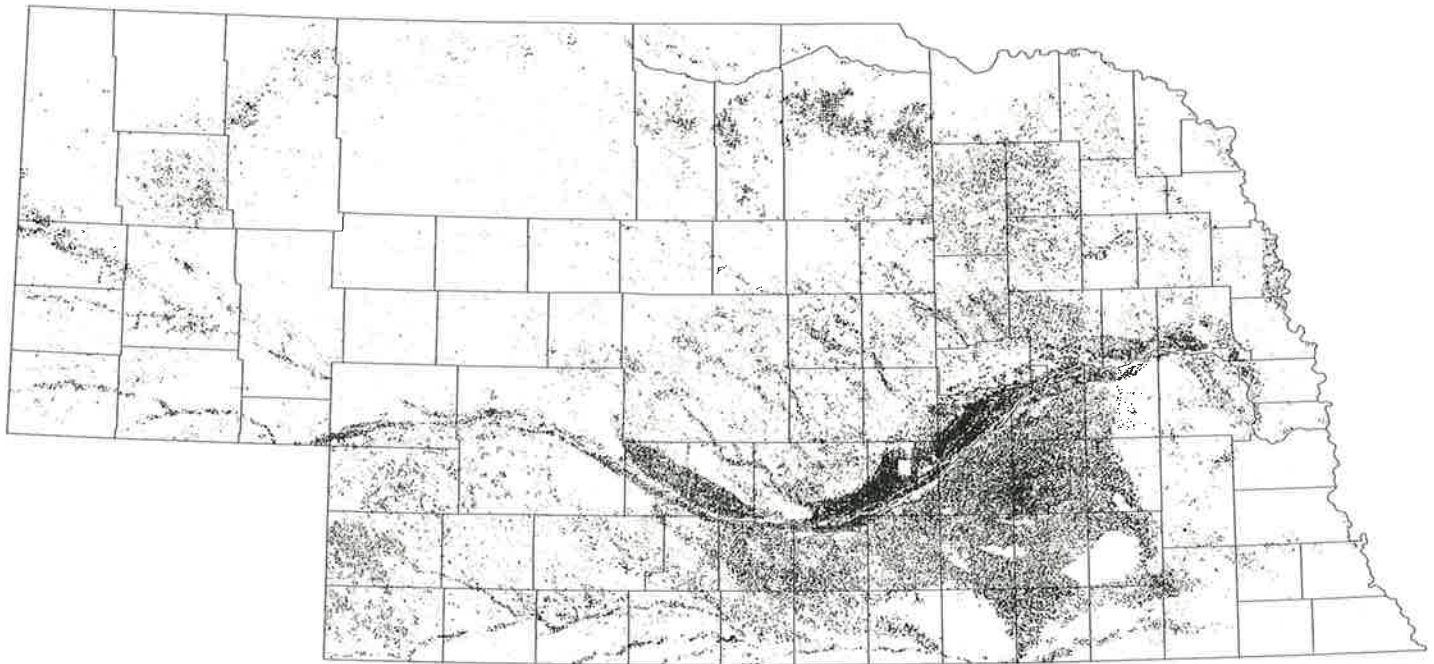
---

"Nebraska Groundwater Level (Decline & Rise) and Location of Registered Wells, 1977" (1977). *Conservation and Survey Division*. 272.

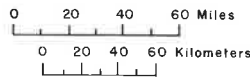
<https://digitalcommons.unl.edu/conservationsurvey/272>

This Article is brought to you for free and open access by the Natural Resources, School of at DigitalCommons@University of Nebraska - Lincoln. It has been accepted for inclusion in Conservation and Survey Division by an authorized administrator of DigitalCommons@University of Nebraska - Lincoln.

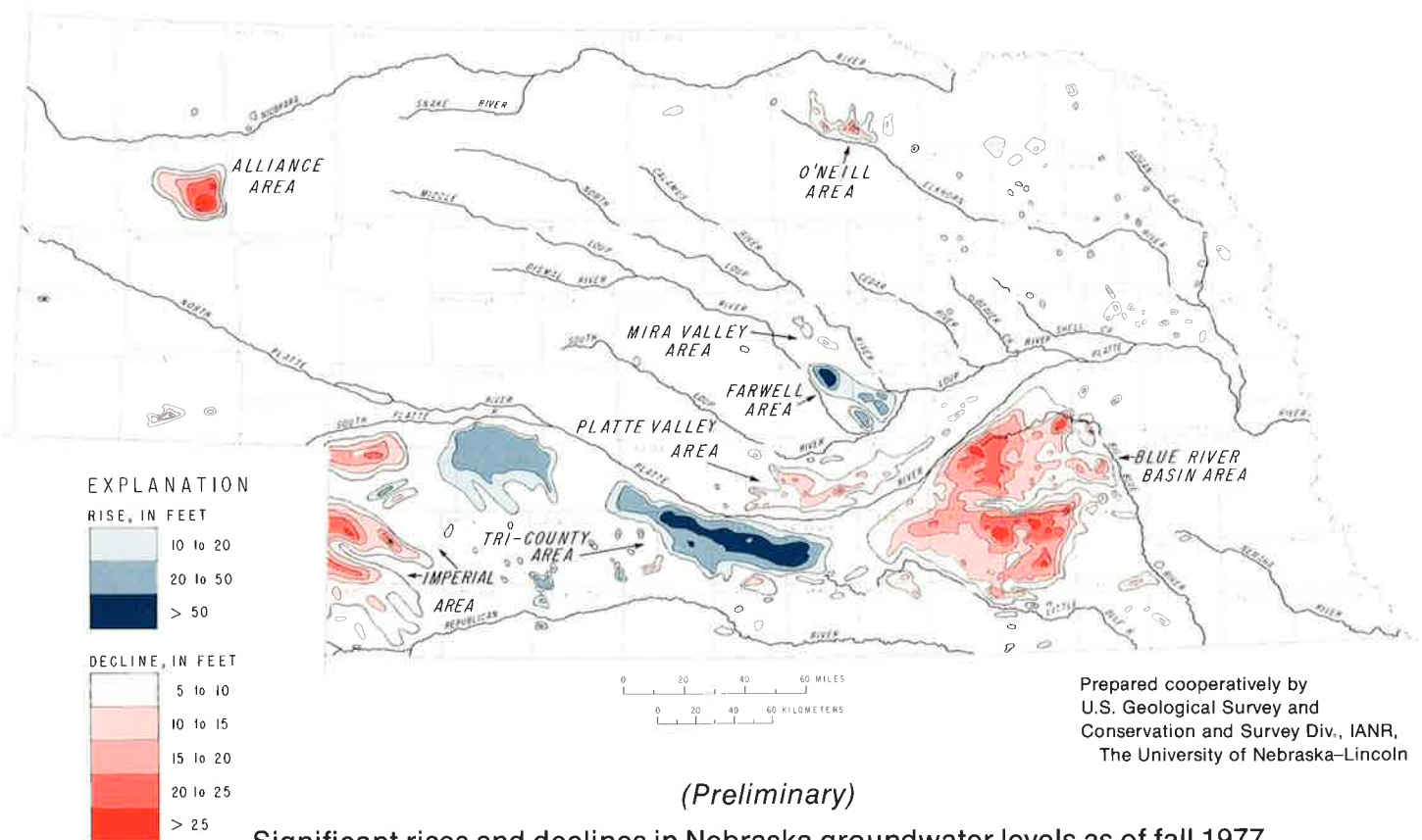
# LOCATION OF REGISTERED IRRIGATION WELLS



Total wells registered January 1, 1978:  
60,064



Prepared cooperatively by  
U.S. Geological Survey and  
Conservation and Survey Div., IANR,  
The University of Nebraska-Lincoln



(Preliminary)

Significant rises and declines in Nebraska groundwater levels as of fall 1977

Prepared cooperatively by  
U.S. Geological Survey and  
Conservation and Survey Div., IANR,  
The University of Nebraska-Lincoln