


1978

## Nebraska Groundwater Level (Decline & Rise) and Location of Registered Wells, 1978

Follow this and additional works at: <https://digitalcommons.unl.edu/conservationsurvey>

 Part of the [Geology Commons](#), [Geomorphology Commons](#), [Hydrology Commons](#), [Paleontology Commons](#), [Sedimentology Commons](#), [Soil Science Commons](#), and the [Stratigraphy Commons](#)

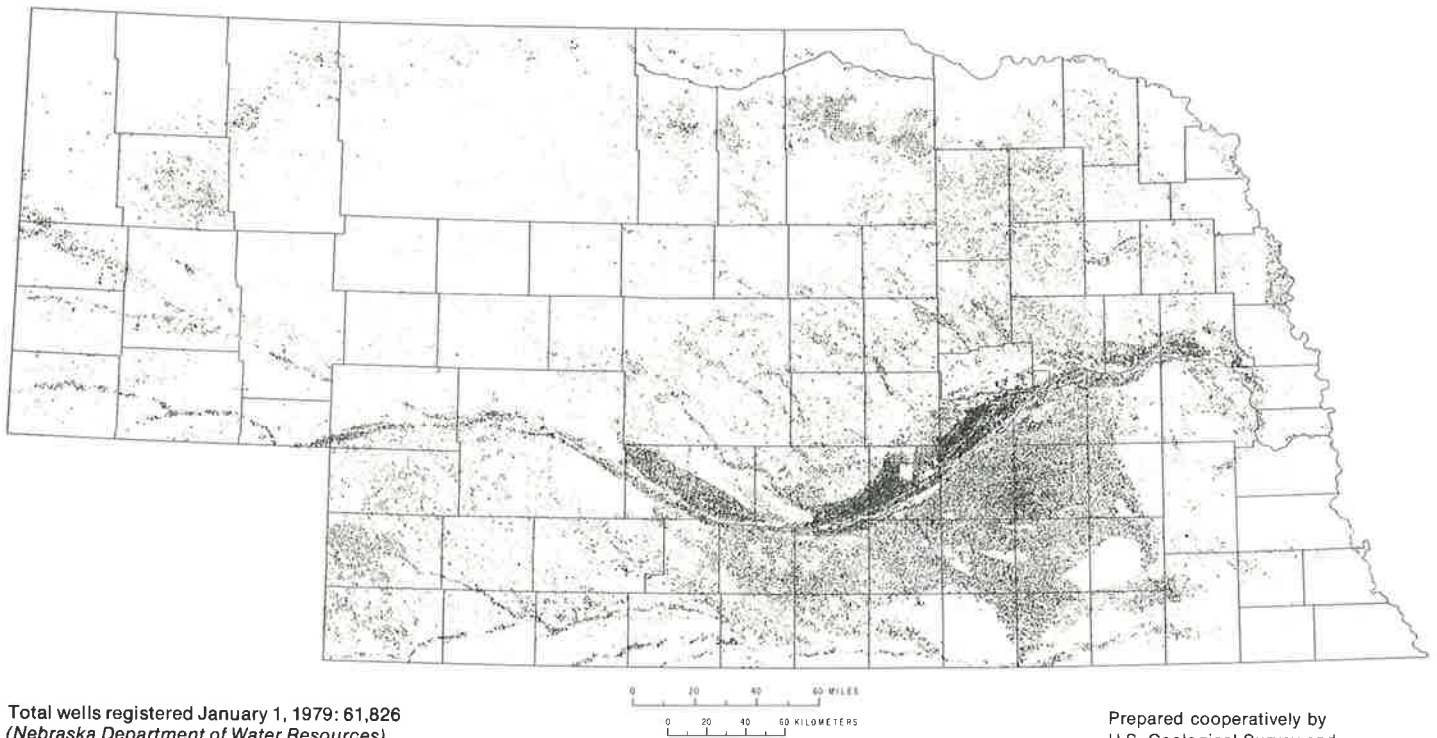
---

"Nebraska Groundwater Level (Decline & Rise) and Location of Registered Wells, 1978" (1978). *Conservation and Survey Division*. 273.

<https://digitalcommons.unl.edu/conservationsurvey/273>

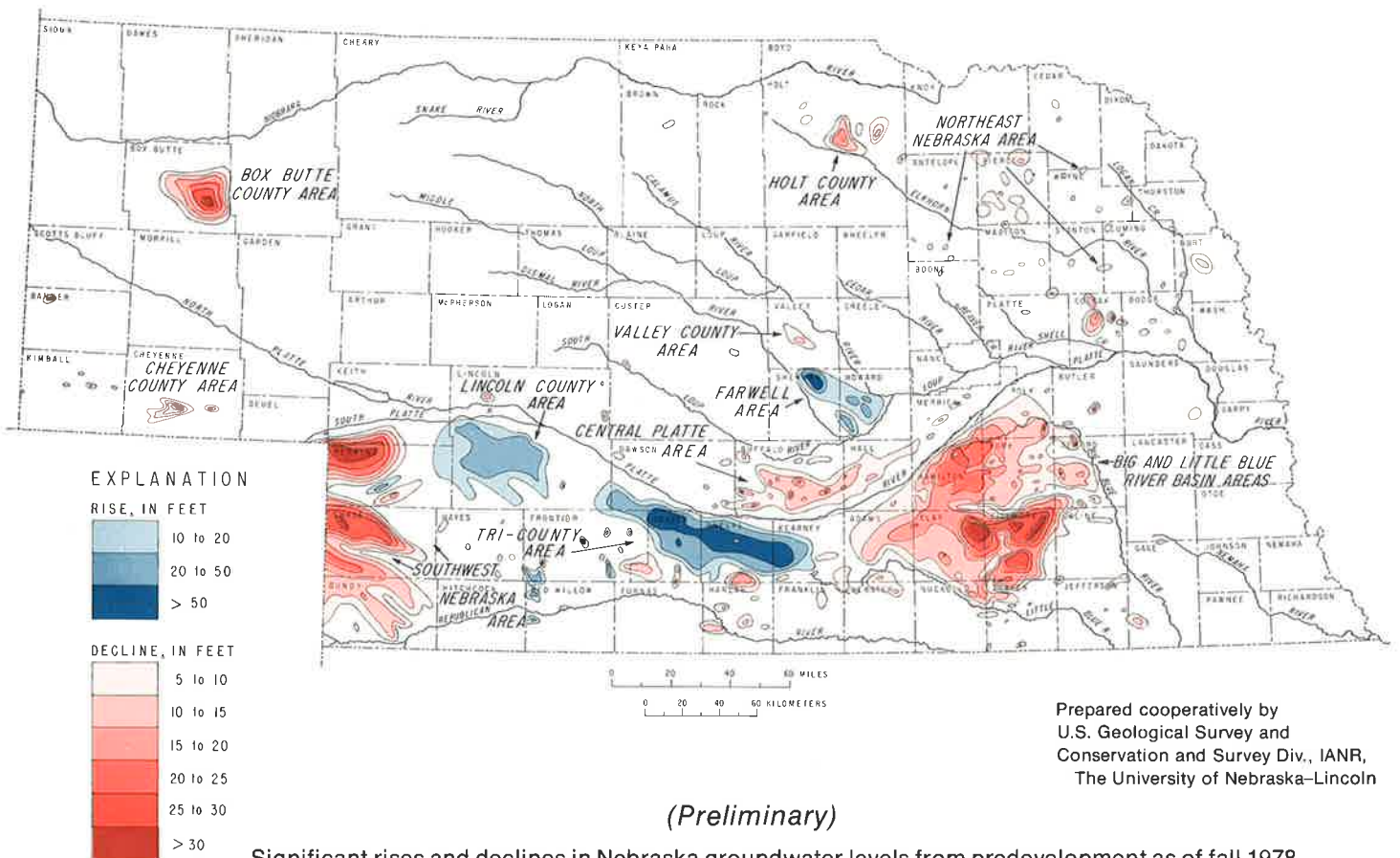
This Article is brought to you for free and open access by the Natural Resources, School of at DigitalCommons@University of Nebraska - Lincoln. It has been accepted for inclusion in Conservation and Survey Division by an authorized administrator of DigitalCommons@University of Nebraska - Lincoln.

# LOCATION OF REGISTERED IRRIGATION WELLS



Total wells registered January 1, 1979: 61,826  
(Nebraska Department of Water Resources)

Prepared cooperatively by  
U.S. Geological Survey and  
Conservation and Survey Div., IANR,  
The University of Nebraska-Lincoln



Prepared cooperatively by  
U.S. Geological Survey and  
Conservation and Survey Div., IANR,  
The University of Nebraska-Lincoln

(Preliminary)

Significant rises and declines in Nebraska groundwater levels from predevelopment as of fall 1978