

University of Nebraska - Lincoln

DigitalCommons@University of Nebraska - Lincoln

Nebraska Tractor Tests

Tractor Test and Power Museum, The Lester F. Larsen

January 2005

Test 2335: Challenger MT565B Techstar Diesel

Nebraska Tractor Test Lab

University of Nebraska-Lincoln, tractortestlab@unl.edu

Follow this and additional works at: <https://digitalcommons.unl.edu/tractormuseumlit>



Part of the [Energy Systems Commons](#), [History of Science, Technology, and Medicine Commons](#), [Other Mechanical Engineering Commons](#), [Physical Sciences and Mathematics Commons](#), [Science and Mathematics Education Commons](#), and the [United States History Commons](#)

Nebraska Tractor Test Lab, "Test 2335: Challenger MT565B Techstar Diesel" (2005). *Nebraska Tractor Tests*. 332.

<https://digitalcommons.unl.edu/tractormuseumlit/332>

This Article is brought to you for free and open access by the Tractor Test and Power Museum, The Lester F. Larsen at DigitalCommons@University of Nebraska - Lincoln. It has been accepted for inclusion in Nebraska Tractor Tests by an authorized administrator of DigitalCommons@University of Nebraska - Lincoln.

SUMMARY OF OECD TEST 2335–NEBRASKA SUMMARY 550

CHALLENGER MT565B TECHSTAR DIESEL

CONTINUOUSLY VARIABLE TRANSMISSION

POWER TAKE-OFF PERFORMANCE

Power HP (kW)	Crank shaft speed rpm	Gal/hr (l/h)	lb/hp.hr (kg/kW.h)	Hp.hr/gal (kW.h/l)	Mean Atmospheric Conditions
MAXIMUM POWER AND FUEL CONSUMPTION					
Rated Engine Speed—(PTO speed—1081 rpm)					
145.6 (108.6)	2199	9.73 (36.82)	0.464 (0.282)	14.97 (2.95)	
Standard Power Take-off Speed(1000 rpm)					
152.2 (113.5)	2034	9.72 (36.78)	0.443 (0.270)	15.68 (3.09)	
Maximum Power (2 hours)					
153.1 (114.2)	1999	9.64 (36.50)	0.437 (0.266)	15.89 (3.13)	
VARYING POWER AND FUEL CONSUMPTION					
145.6 (108.6)	2199	9.73 (36.82)	0.464 (0.282)	14.97 (2.95)	Air temperature
124.0 (92.5)	2207	8.55 (32.37)	0.478 (0.291)	14.52 (2.86)	66°F(19°C)
93.5 (69.7)	2215	6.93 (26.24)	0.515 (0.313)	13.50 (2.66)	Relative humidity
62.6 (46.7)	2223	5.37 (20.33)	0.596 (0.363)	11.65 (2.30)	55%
31.5 (23.5)	2231	3.76 (14.24)	0.830 (0.505)	8.38 (1.65)	Barometer
--	2238	2.06 (7.78)	--	--	29.3" Hg (99.2 kPa)
Maximum torque - 465 lb.-ft. (630 Nm) at 1401 rpm					
Maximum torque rise - 33.5%					
Torque rise at 1800 engine rpm - 27%					

DRAWBAR PERFORMANCE

(Unballasted - Front Drive Engaged)

FUEL CONSUMPTION CHARACTERISTICS

Power Hp (kW)	Drawbar pull lbs (kN)	Speed mph (km/h)	Crank- shaft speed rpm	Slip %	Fuel Consumption lb/hp.hr (kg/kW.h)	Hp.hr/gal (kW.h/l)	Temp.°F (°C) cool- ing med	Air dry bulb	Barom. inch Hg (kPa)
Maximum Power—Turtle									
120.4 (89.8)	9375 (41.71)	4.82 (7.75)	2201	4.9	0.559 (0.340)	12.44 (2.45)	178 (81)	57 (14)	29.6 (100.4)
75% of Pull at Maximum Power—Turtle									
92.0 (68.6)	6985 (31.07)	4.94 (7.95)	2212	3.4	0.587 (0.357)	11.83 (2.33)	180 (82)	57 (14)	29.6 (100.4)
50% of Pull at Maximum Power—Turtle									
62.2 (46.4)	4645 (20.65)	5.02 (8.08)	2222	2.2	0.681 (0.414)	10.20 (2.01)	176 (80)	57 (14)	29.6 (100.4)
75% of Pull at Reduced Engine Speed—Turtle									
92.7 (69.1)	7000 (31.14)	4.96 (7.99)	1967	3.4	0.533 (0.324)	13.05 (2.57)	172 (78)	59 (15)	29.6 (100.4)
50% of Pull at Reduced Engine Speed—Turtle									
62.5 (46.6)	4635 (20.62)	5.06 (8.13)	1968	2.4	0.573 (0.349)	12.13 (2.39)	171 (77)	57 (14)	29.6 (100.4)

Location of tests: DLG testing Station for Agricultural Machinery, Max-Eyth-Weg 1 D-64823, Gros - Umstadt, Germany

Dates of tests: April - June, 2005
Operator sound level - December 19, 2006

Manufacturer: AGCO S.A., BP 60307, Avenue Blaise Pascal, 60026 Beauvais, France

FUEL and OIL: Fuel No. 2 Diesel **Specific gravity converted to 60°/60°F (15°/15°C)** 0.835 **Fuel weight** 6.95 lbs/gal (0.8328 kg/l) **Oil SAE** 10W40 **API service classification** CH4 **Transmission and hydraulic lubricant** SAE10W/40 **Front axle lubricant** Gear oil SAE 85W/90

ENGINE: Make Caterpillar Diesel **Type** six cylinder vertical with turbocharger and air to air intercooler **Serial No.** 207-1097 33.40.38.08 **Crankshaft** lengthwise **Rated engine speed** 2200 **Bore and stroke** 3.937" x 5.00" (100.0 mm x 127.0 mm) **Compression ratio** 17.5 to 1 **Displacement** 366 cu in (5985 ml) **Starting system** 12 volt **Lubrication** pressure **Air cleaner** two paper elements and aspirator **Oil filter** one full flow cartridge **Oil cooler** engine coolant heat exchanger for crankcase oil, radiator for hydraulic and final drive oil, radiator for transmission oil **Fuel filter** one paper element **Muffler** vertical **Cooling medium temperature control** thermostat and variable speed fan

CHASSIS: **Type** front wheel assist **Serial No.** N009101 **Tread width** rear 66.5" (1690 mm) to 79.5" (2020 mm) front 64.6" (1640 mm) to 78.1" (1984 mm) **Wheelbase** 118.4" (3007 mm) **Hydraulic control system** direct engine drive **Transmission** AGCO CVT. A combination of mechanical and hydrostatic sections are electronically controlled to give the travel speeds shown. The transmission has two mechanical ranges. **Nominal travel speeds mph (km/h)** forward: Low range 0 - 17 (0 - 28), high range 0 - 25 (0 - 40) reverse: Low range 0 - 11 (0 - 18), high range 0 - 12 (0 - 19) **Clutch** a foot pedal controls the hydrostatic oil flow **Brakes** multiple wet disc hydraulically operated by two foot pedals that can be locked together **Steering** hydrostatic **Power take-off** 540 rpm at 2062 engine rpm or 1000 rpm at 2033 engine rpm **Unladen tractor mass** 14320 lb (6495 kg)

DRAWBAR PERFORMANCE

(Unballasted - Front Drive Engaged)

MAXIMUM POWER AT SELECTED SPEEDS

Power Hp (kW)	Drawbar pull lbs (kN)	Speed mph (km/h)	Crank- shaft speed rpm	Slip %	Fuel Consumption lb/hp.hr (kg/kW.h)	Consumption Hp.hr/gal (kW.h/l)	Temp. °F(°C) cool- ing med	Air dry bulb	Barom. inch Hg (kPa)
113.7 (84.8)	14835 (66.00)	2.87 (4.63)	2153	15.0	Turtle 0.593 (0.360)	11.73 (2.31)	173 (78)	52 (11)	29.6 (100.4)
118.4 (88.3)	14495 (64.47)	3.06 (4.93)	2001	12.2	Turtle 0.557 (0.339)	12.49 (2.46)	176 (80)	55 (13)	29.6 (100.4)
121.5 (90.6)	12450 (55.39)	3.66 (5.89)	1998	7.6	Turtle 0.542 (0.330)	12.79 (2.52)	176 (80)	57 (14)	29.6 (100.4)
125.4 (93.5)	11365 (50.56)	4.14 (6.66)	1999	6.2	Turtle 0.526 (0.320)	13.20 (2.60)	176 (80)	50 (10)	29.4 (99.4)
125.1 (93.3)	9515 (42.32)	4.93 (7.94)	2000	4.9	Turtle 0.527 (0.321)	13.18 (2.60)	180 (82)	55 (13)	29.4 (99.4)
124.6 (92.9)	8035 (35.75)	5.82 (9.36)	2000	4.0	Turtle 0.531 (0.323)	13.10 (2.58)	178 (81)	57 (14)	29.4 (99.4)
123.6 (92.2)	7120 (31.68)	6.51 (10.47)	2002	3.4	Turtle 0.535 (0.325)	12.99 (2.56)	180 (82)	59 (15)	29.3 (99.3)
121.9 (90.9)	6175 (27.46)	7.40 (11.91)	2000	2.9	Turtle 0.542 (0.330)	12.82 (2.53)	180 (82)	57 (14)	29.3 (99.3)
120.0 (89.5)	5210 (23.17)	8.64 (13.91)	2001	2.1	Turtle 0.550 (0.335)	12.64 (2.49)	181 (83)	52 (11)	29.6 (100.4)
120.2 (89.6)	8045 (35.78)	5.60 (9.02)	2001	4.5	Rabbit 0.550 (0.334)	12.64 (2.49)	181 (83)	50 (10)	29.3 (99.3)
122.6 (91.4)	7015 (31.20)	6.55 (10.54)	2001	4.0	Rabbit 0.539 (0.328)	12.89 (2.54)	181 (83)	50 (10)	29.3 (99.3)
122.8 (91.6)	6415 (28.53)	7.18 (11.56)	2000	3.7	Rabbit 0.538 (0.327)	12.91 (2.54)	181 (83)	50 (10)	29.3 (99.3)
122.8 (91.6)	5630 (25.06)	8.18 (13.16)	2002	3.1	Rabbit 0.538 (0.327)	12.91 (2.54)	180 (82)	49 (9)	29.4 (99.4)
126.4 (94.3)	5355 (23.83)	8.85 (14.24)	2004	3.0	Rabbit 0.523 (0.318)	13.30 (2.62)	180 (82)	50 (10)	29.4 (99.4)
125.2 (93.4)	4585 (20.40)	10.24 (16.47)	1999	3.0	Rabbit 0.528 (0.321)	13.15 (2.59)	180 (80)	52 (11)	29.3 (99.3)

TRACTOR SOUND LEVEL WITH CAB

dB(A)

At no load in Turtle range- 4.6mph (7.5 km/h)	70.4
Bystander in Rabbit range	--

TIRES, BALLAST AND WEIGHT

Rear Tires - No., size, ply & psi(*kPa*)

Ballast - Duals (total)

- Cast Iron (total)

Front Tires - No., size, ply & psi(*kPa*)

Ballast - Liquid (total)

- Cast Iron (total)

Height of Drawbar

Static Weight with operator - Rear

- Front

- Total

With Ballast

Four 480/80R42;**,9(60)

1770 lb (803 kg)

1565 lb (710 kg)

Two 380/85R30;**,20(140)

None

1825 lb (827 kg)

21.3 in (540 mm)

11555 lb (5240 kg)

8090 lb (3670 kg)

19645 lb (8910 kg)

Without Ballast

Two 520/85R42;**,12(80)

None

None

Two 420/90R30;**,12(80)

None

None

21.3 in (540 mm)

8675 lb (3935 kg)

5810 lb (2635 kg)

14485 lb (6570 kg)

NOTE:The performance figures on this report are the result of replacing the electronic engine control module of the Challenger MT555B with the Challenger MT565B module.

REPAIRS AND ADJUSTMENTS: No repairs or adjustments

REMARKS: All test results were determined from observed data obtained in accordance with official OECD test procedures. This tractor did not meet the manufacturer's 3 point lift capacity claim of 13700 lbs (6214 kg) at 24" behind link ends. The performance figures on this summary were taken from a test conducted under the OECD Code II test procedure.

We, the undersigned, certify that this is a true summary of data from OECD Report No. **2335**, Nebraska Summary 550, January 5, 2007.

Roger M. Hoy
Director

M.F. Kocher
V.I. Adamchuk
J.A. Smith
Board of Tractor Test Engineers

DRAWBAR PERFORMANCE
(Ballasted - Front Drive Engaged)
MAXIMUM POWER AT SELECTED SPEEDS

Power Hp (kW)	Drawbar pull lbs (kN)	Speed mph (km/h)	Crank- shaft speed rpm	Slip %	Fuel Consumption lb/hp.hr (kg/kW.h)	Consumption Hp.hr/gal (kW.h/l)	Temp.°F cool- ing med	Temp.°F (°C) Air dry bulb	Barom. inch Hg (kPa)
Maximum Power—Turtle									
117.6 (87.7)	10550 (46.93)	4.18 (6.72)	2198	4.7	0.574 (0.349)	12.10 (2.38)	176 (80)	70 (21)	29.6 (100.4)
75% of Pull at Maximum Power—Turtle									
89.6 (66.8)	7870 (35.00)	4.27 (6.87)	2212	3.3	0.597 (0.363)	11.63 (2.29)	172 (78)	70 (21)	29.6 (100.4)
50% of Pull at Maximum Power—Turtle									
60.4 (45.0)	5210 (23.17)	4.35 (7.00)	2221	2.2	0.694 (0.422)	10.00 (1.97)	172 (78)	66 (19)	29.6 (100.4)
75% of Pull at Reduced Engine Speed—Turtle									
88.6 (66.1)	7875 (35.03)	4.22 (6.79)	1935	3.2	0.537 (0.327)	12.94 (2.55)	172 (78)	68 (20)	29.6 (100.4)
50% of Pull at Reduced Engine Speed—Turtle									
60.3 (44.9)	5235 (23.29)	4.32 (6.95)	1947	2.5	0.600 (0.365)	11.57 (2.28)	171 (77)	72 (22)	29.6 (100.4)

MAXIMUM POWER IN SELECTED GEARS

110.4 (82.3)	19450 (86.52)	2.13 (3.43)	2074	15.0	Turtle 0.606 (0.368)	11.47 (2.26)	174 (79)	68 (20)	29.7 (100.5)
118.3 (88.2)	17425 (77.51)	2.55 (4.10)	2002	9.7	Turtle 0.559 (0.340)	12.44 (2.45)	176 (80)	73 (23)	29.7 (100.5)
121.0 (90.2)	15645 (69.58)	2.90 (4.66)	2000	7.3	Turtle 0.545 (0.332)	12.74 (2.51)	178 (81)	70 (21)	29.7 (100.5)
122.3 (91.2)	14005 (62.30)	3.27 (5.27)	2000	6.3	Turtle 0.539 (0.328)	12.89 (2.54)	180 (82)	66 (19)	29.7 (100.5)
124.3 (92.7)	12265 (54.57)	3.80 (6.12)	1999	5.0	Turtle 0.530 (0.322)	13.11 (2.58)	181 (83)	68 (20)	29.7 (100.5)
124.3 (92.7)	10995 (48.91)	4.24 (6.83)	2001	4.4	Turtle 0.531 (0.323)	13.10 (2.58)	169 (76)	72 (22)	29.7 (100.6)
120.6 (89.9)	8955 (39.84)	5.05 (8.13)	2000	3.6	Turtle 0.547 (0.333)	12.69 (2.50)	176 (80)	72 (22)	29.7 (100.6)
120.6 (89.9)	7675 (34.14)	5.89 (9.48)	2000	3.2	Turtle 0.550 (0.334)	12.64 (2.49)	176 (80)	70 (21)	29.7 (100.6)
120.6 (89.9)	6785 (30.17)	6.67 (10.73)	2001	2.7	Turtle 0.547 (0.333)	12.69 (2.50)	178 (81)	68 (20)	29.7 (100.6)
119.4 (89.0)	5905 (26.26)	7.58 (12.20)	2001	2.4	Turtle 0.552 (0.336)	12.59 (2.48)	176 (80)	59 (15)	29.7 (100.6)
117.3 (87.5)	5160 (22.95)	8.53 (13.73)	2004	2.1	Turtle 0.563 (0.342)	12.34 (2.43)	176 (80)	57 (14)	29.7 (100.6)
117.5 (87.6)	9600 (42.70)	4.59 (7.38)	2001	3.8	Rabbit 0.563 (0.343)	12.33 (2.43)	172 (78)	66 (19)	29.7 (100.7)
119.8 (89.3)	8385 (37.30)	5.36 (8.62)	2001	3.3	Rabbit 0.550 (0.335)	12.63 (2.49)	178 (81)	66 (19)	29.7 (100.7)
121.4 (90.6)	7625 (33.91)	5.97 (9.61)	2001	2.8	Rabbit 0.542 (0.330)	12.79 (2.52)	180 (82)	64 (18)	29.7 (100.7)
120.4 (89.8)	6900 (30.69)	6.54 (10.53)	2001	2.6	Rabbit 0.547 (0.333)	12.69 (2.50)	180 (82)	68 (20)	29.7 (100.7)
120.4 (89.8)	6040 (26.86)	7.48 (12.03)	2003	2.4	Rabbit 0.550 (0.334)	12.64 (2.49)	176 (80)	68 (20)	29.7 (100.7)
120.4 (89.8)	5400 (24.01)	8.36 (13.46)	2002	2.1	Rabbit 0.548 (0.334)	12.67 (2.50)	174 (79)	66 (19)	29.7 (100.6)

THREE POINT HITCH PERFORMANCE (OECD Static Test)

CATEGORY: III

Quick Attach: None

Maximum force exerted through whole range: 11230 lbs (49.95 kN)

i) Opening pressure of relief valve: NA

Sustained pressure of the open relief valve: 2875 psi (198 bar)

one coupler set two outlet sets combined

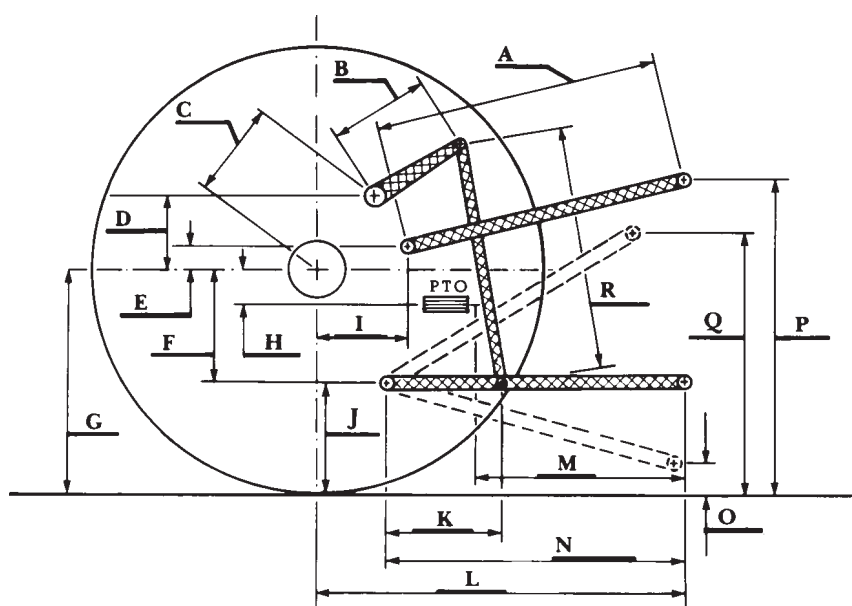
ii) Pump delivery rate at minimum pressure: 26.9 GPM (101.7 l/min) 32.2 GPM (122.0 l/min)

iii) Pump delivery rate at maximum

hydraulic power: 26.0 GPM (98.4 l/min) 29.0 GPM (109.7 l/min)

Delivery pressure: 2465 psi (170 bar) 2610 psi (180 bar)

Power: 37.4 HP (27.9 kW) 44.1 HP (32.9 kW)



HITCH DIMENSIONS AS TESTED—NO LOAD

	inch	mm
A	31.7	805
B	14.0	355
C	13.7	347
D	12.0	305
E	8.5	215
F	10.0	255
G	36.2	920
H	1.8	45
I	15.7	400
J	26.2	665
K	23.6	600
L	46.3	1175
M	26.2	665
N	40.6	1030
O	9.1	230
P	53.1	1350
Q	42.1	1070
R	29.1	740