

University of Nebraska - Lincoln

DigitalCommons@University of Nebraska - Lincoln

Range Beef Cow Symposium

Animal Science Department

11-2015

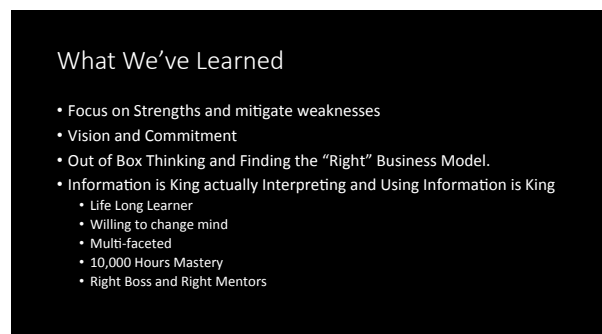
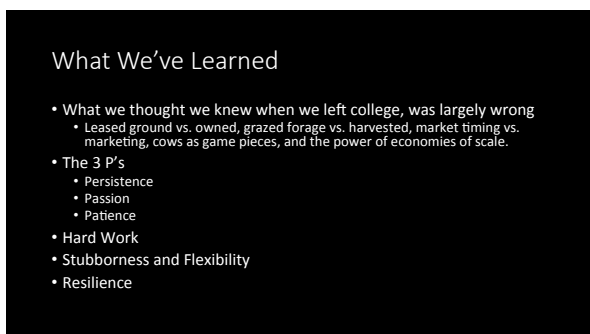
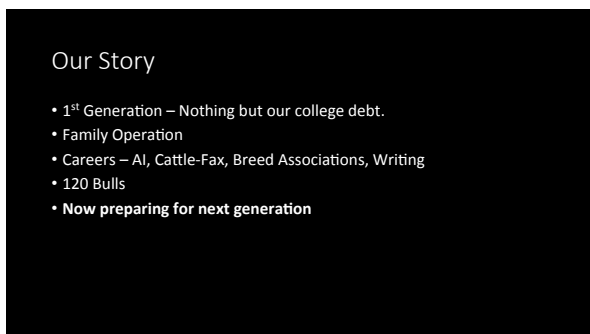
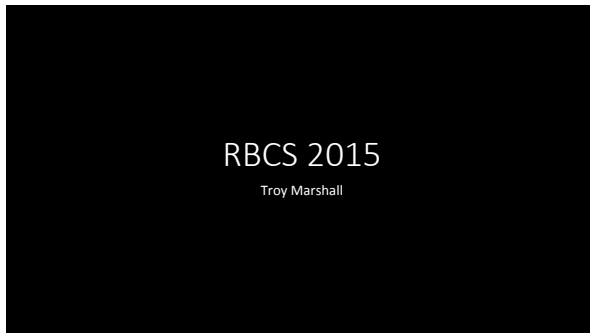
Young Producer Inspirational Breakfast

Troy Marshall

Follow this and additional works at: <http://digitalcommons.unl.edu/rangebeefcowsymp>

Marshall, Troy, "Young Producer Inspirational Breakfast" (2015). *Range Beef Cow Symposium*. 325.
<http://digitalcommons.unl.edu/rangebeefcowsymp/325>

This Article is brought to you for free and open access by the Animal Science Department at DigitalCommons@University of Nebraska - Lincoln. It has been accepted for inclusion in Range Beef Cow Symposium by an authorized administrator of DigitalCommons@University of Nebraska - Lincoln.



9 Habits of Profoundly Influential People

- They think for themselves.
- They are graciously disruptive.
- They inspire conversation.
- They leverage their networks.
- They focus only what really matters.

9 Habits of Profoundly Influential People

- They welcome disagreement.
- They are proactive.
- They respond rather than react.
- They believe.

Bringing it all together

To increase your influence, you need to
freely share your skills and insights, and you
must be passionate in your pursuit of a
greater future.

The Future of Ag is Bright!

- The tale of two pictures.

Thank You!