

University of Nebraska - Lincoln

DigitalCommons@University of Nebraska - Lincoln

NEBLINE Newsletter Archive from Nebraska
Extension in Lancaster County

Extension

9-2021

NEBLINE, Sep./Oct. 2021

Follow this and additional works at: <https://digitalcommons.unl.edu/neblines>

 Part of the [Adult and Continuing Education Commons](#), [Agricultural Education Commons](#), [Early Childhood Education Commons](#), [Entomology Commons](#), [Family and Consumer Sciences Commons](#), [Health and Physical Education Commons](#), [Horticulture Commons](#), [Other Education Commons](#), [Other Plant Sciences Commons](#), and the [Outdoor Education Commons](#)

"NEBLINE, Sep./Oct. 2021" (2021). *NEBLINE Newsletter Archive from Nebraska Extension in Lancaster County*. 355.

<https://digitalcommons.unl.edu/neblines/355>

This Article is brought to you for free and open access by the Extension at DigitalCommons@University of Nebraska - Lincoln. It has been accepted for inclusion in NEBLINE Newsletter Archive from Nebraska Extension in Lancaster County by an authorized administrator of DigitalCommons@University of Nebraska - Lincoln.



4-H Youth Help Celebrate 150 Years of Lancaster County Fair

The 2021 Lancaster County Super Fair was held July 29–Aug. 7 at the Lancaster Event Center Fairgrounds. Over 530 4-H/FFA exhibitors showcased over 4,100 exhibits (including static exhibits, Clover Kids, animals and contest entries). The Super Fair provides 4-H youth an opportunity to showcase their completed 4-H projects.

This year marked the 150th year celebration of the Lancaster County Fair (postponed from 2020), and many 4-H'ers created special 150th anniversary-themed exhibits!

A special thank you to all the volunteers and sponsors who helped make 4-H & FFA at the fair possible!



Photos by Vicki Jedlicka, Nebraska Extension in Lancaster County

325 4-H exhibitors entered 2,083 static exhibits. The Super Fair features the largest county 4-H static exhibit display in Nebraska. Pictured is a 4-H member holding her 150th anniversary-themed painting.



The Table Setting contest is one of several 4-H contests held at the fair. Some contests (for example, Plant Science and Presentations) are held prior to the fair.



Lancaster County has the largest 4-H county fair horse show in the state, with 41 events spanning five days. This year, 115 horse exhibitors competed in 918 total entries. Pictured is one of the Western shows.



In livestock showmanship classes, youth are judged on their ability to handle and present their animal. In market, breeding and other classes, animals are judged on their performance (e.g. rate of gain) or conformation (e.g. structure, muscling and balance). Pictured is the Meat Goat show.



Nearly 140 4-H youth and adults volunteered at the 4-H food stand this year, which is 4-H Council's primary fundraiser. Proceeds support the 4-H program throughout the year.

Non-Profit Organization
U.S. Postage Paid
Permit No. 36
Omaha, Nebraska

CHANGE SERVICE REQUESTED

Nebraska Extension in Lancaster County
444 Cherry Creek Road, Suite A
Lincoln, Nebraska 68528-1591

Farm to School Connections in Lancaster County

By Emily Gratopp, MS, ASCM-CPT and Alyssa Havlovic, MS, RDN, ACSM EP-C, Extension Educators in Lancaster County

What is Farm to School?

Nationally, Farm to School is an intentional effort to connect local food producers to schools, early care and education sites. Farm to School enriches community connections with fresh, healthy food grown by local food producers by implementing local-food purchasing and education practices.

Research has shown that healthy students are better learners, and increasing healthy food consumption is a great way for schools to increase learning and set healthy patterns for life (CDC, 2021, "Eating Healthier in School"). Farm to School also provides a rich opportunity for student learning by increasing opportunities to participate in experiential education, including school gardens, farm field trips and cooking lessons. It enhances traditional school subjects such as agriculture, agronomy, science literacy, math and business development.

Farm to School also has a big economic impact. Nationally, school lunches feed 30.5 million students each day in the National School Lunch program. This accounts for almost \$13 billion per year in federal dollars spent on feeding students. Locally, this is a great economic opportunity for local farmers and producers to gain access to the large, institutionalized market of school lunches.

Farm to School is a win-win-win for farmers, schools and communities. It capitalizes on an economic opportunity to keep local



Graphic from: National Farm to School Network

dollars going to local farmers, boosting the local economy while providing healthy, wholesome food to students for enhanced learning outcomes.

Farm to School Institute

Nebraska Extension in Lancaster County recently engaged in the Nebraska Farm to School Institute as a member of the Pius X High School team. Through a competitive application process, Pius X was selected as an implementation site for the Farm to School Institute during the 2021–2022 school year. Extension Educators are supporting Farm to School efforts through nutrition education provided by Alyssa Havlovic and team coaching by Emily Gratopp.

The Nebraska Farm to School Institute provided training and support for school-community teams to develop a Farm to School program. Selected teams came together from across the state to participate in workshops, learn best practices from national experts and create an action plan to carry out in their respective communities. The Institute is a collaboration between the Nebraska Department of Education (NDE) and Nebraska Extension — made possible by funding from the USDA Farm to School Grant program.

The efforts of Pius X focus on building support for Farm to School efforts within

their cafeteria, their classrooms and their local community. One of Pius X's Farm to School goals is to offer at least one fresh, locally grown or produced food item on the menu each week during the academic year. Additionally, Pius X is increasing nutrition education in their cafeteria, classrooms and out-of-school programs.

Pius X is working to build connections between the community, local farmers/producers and the school. If you are interested in getting involved with Pius X's Farm to School efforts, go to www.piusx.net/farm2school.

Get Involved

Are you interested in getting your school involved in Farm to School? Get started by engaging in Nebraska Thursdays and the Harvest of the Month program. Find more information on the NDE Farm to School website at www.education.ne.gov/ns/farm-to-school/. Find local farmers/producers to connect with in the Buy Fresh Buy Local 2021 Food Guide at <https://buylocalnebraska.org>.

The Mountain Plains Crunch Off is a friendly competition and multi-state celebration of Farm to School Month in October. Nebraska has been the Crunch Off winner the past two consecutive years.

We are hoping to win it again this year by having the most Crunch Off registrants per capita than any other state. Participate by registering and taking a bite of local produce. Learn more about the Crunch Off and register by going to Buy Fresh Buy Local at <http://buylocalnebraska.org/nebraska-crunch>.

Sources:

- Centers for Disease Control and Prevention (CDC), 2021. "Eating Healthier at School." Retrieved from www.cdc.gov/healthyschools/features/eating_healthier.htm.
- Christensen, L.O, Jablonski, B.B.R, Stephens, L., Joshi, A. (2017). "Economic Impacts of Farm to School: Case Studies and Assessment Tools." Retrieved from www.farmtoschool.org/Resources/EconomicImpactReport.pdf.



RECIPE OF THE MONTH

By Emily Gratopp, MS, ASCM-CPT, and Alyssa Havlovic, MS, RDN, ACSM EP-C Extension Educators in Lancaster County

Buying local food helps support local farmers and the economy while knowing where your food comes from. Prepare the following recipe using locally grown ingredients.

SPAGHETTI SQUASH WITH TOMATOES, BASIL AND PARMESAN

(Makes 4 servings)

- 1 spaghetti squash, scrubbed with clean vegetable brush under running water
- 1 Tablespoon vegetable oil
- 2 teaspoons dried basil OR 1/2 cup fresh basil, gently rubbed under cold running water and chopped
- 1/4 teaspoon dried oregano
- 3 Tablespoons Parmesan cheese, divided
- 1 cup cherry tomatoes, gently rubbed under cold running water and thinly sliced

1. Wash hands with soap and water.
2. Cut the squash in half. Place the 2 squash halves, cut side down, in glass baking dish.
3. Add about 1/4 cup water and cover with plastic wrap. Microwave on high 12 minutes or until soft when pressed. Let stand covered for 3 minutes.
4. In a large bowl, whisk oil, basil, oregano and 2 Tablespoons Parmesan cheese. Stir in tomatoes and season lightly with salt and pepper to taste.
5. Scrape squash out with a fork, add squash strands to tomato mixture and toss until combined.
6. Sprinkle with remaining 1 Tablespoon Parmesan cheese.

Nutrition Information: Serving Size (1/4 of recipe): Calories 77 Total Fat 5g Saturated Fat 1g Sodium 67mg Total Carbohydrates 7g Fiber 2g
Source: food.unl.edu



Photo by Craig Chendler, UNL Communications

Uses of Compost

By Sarah Browning, Extension Educator in Lancaster County

Fall is a great time for composting and there are many ways it can be done. Putting your landscape plant materials — such as tree leaves, grass clippings, food vegetative waste and garden waste — to good use provides many benefits to the landscape and also lightens the load on our landfill.



Put landscape waste, such as tree leaves and grass clippings, to good use by creating your own compost.

No matter the amount of composting material available or your energy level, there is a type of composting that can work for you, such as bag and trench composting.

For more information on traditional composting methods, review the resources by Nebraska Extension below.

- NebGuide “Garden Compost” (G222) at <http://go.unl.edu/gardencompost>.
- GROBigRed Virtual Learning Series video “Composting” at <https://go.unl.edu/grobigreredcompost>.

Bag Composting

Bag composting is perhaps the easiest composting technique. It’s a passive method so materials break down slowly, but much less work is required of you! No turning materials with a pitchfork on a regular basis as you would with a traditional compost pile.

Chopping leaves into smaller pieces makes them break down faster, so collect them with your lawn mower. Then fill

30–40 gallon sized, black plastic bags (3 ml thick).

In each black plastic bag add about 1/2 cup high-nitrogen fertilizer or two shovels of manure. Fertilizer or manure provides the nitrogen microbes need to breakdown high-carbon tree leaves. Next, add two shovels of garden soil. This provides the microbes needed for decomposition. Add about 1–2 quarts of water to each bag; composting microbes need water to live and be most active at breaking down your leaves.

Do you need to add holes in the bags for oxygen to enter? For additional details, read about Bag Composting in my article “Fall Leaves — Put Them to Work in Your Landscape” online at <https://go.unl.edu/bagcomposting>.

Trench Composting

This method is also called vertical composting and soil incorporation composting, but no matter the name, it’s one of the simplest methods of handling smaller quantities of food waste.

To get started trench composting, all that’s needed is to dig a hole. If space is limited, start with a hole about 12–15 inches deep and 8–10 inches wide. If space allows, dig a longer trench, 12–15 inches deep and as long as the space allows.

Where to put it? The vegetable garden is certainly a good place to start. Locate the holes or trenches randomly throughout the vegetable garden when a new one is needed, or develop a system. Locate holes in even-numbered walkways in even years and odd-numbered walkways in odd years.

To fill the compost holes, cut or chop compost materials into fairly small pieces, place them in the hole and mix them with soil. Fill the trench until it is full enough to allow backfilling with at least 8 inches of soil. If the compost

materials are dry, add moisture before backfilling.

That’s it — no additional maintenance of the compost trenches is needed. Just dig a new trench for the next batch of kitchen waste. Depending on soil temperature, the number of microorganisms in the soil and the carbon content of the wastes, decomposition will occur in one month to one year.

For additional details, read my article “Trench Composting — A Simple Method of Reusing Kitchen Waste” online at <https://go.unl.edu/trenchcomposting>.

Upcoming Composting Programs

For a great demonstration on how to construct a traditional compost pile and learn the basics of composting, plan to attend one of the upcoming free composting programs presented by Nebraska Extension Master Gardeners.

- Saturday, Oct. 16, 10 a.m. at Willard Community Center, 1245 S. Folsom St., Lincoln.
- Saturday, Oct. 23, 10–11 a.m., at Pioneer Park Nature Center’s backyard composting demonstration area, Lincoln.

GROBigRed Virtual Learning Series

Nebraska Extension’s GROBigRed Virtual Learning Series brings Extension experts from across the state to answer your garden questions. Vegetable Gardening Beyond Basics programs will take place through October, covering:

- Monday, Sept. 27: Uncommon & Culturally Significant Crops
- Monday, Oct. 11: Backyard Garden to Market Garden

These Zoom webinars will be 12:10–12:50 p.m. and are free. Details and registration links are at <https://communityenvironment.unl.edu/grobigrered>.

Watch past GROBigRed programs at <https://go.unl.edu/grobigreredtube>

GARDEN GUIDE THINGS TO DO THIS MONTH

By Mary Jane Frogge, Extension Associate in Lancaster County

Select accent plants for your landscape that will provide autumn colors. Trees that have red fall color are red maple, sugar maple, Norway maple, red oak and scarlet oak. Shrubs with red fall foliage include sumac, viburnum, winged euonymus and barberry.

Before the first frost, dig up caladiums. Allow them to dry and store them in a dry place for the winter.

Be sure to keep strawberry beds weed free. Every weed you pull now will help make weeding much easier next spring.

Rake up leaves, twigs and fruit from crabapple trees and dispose of them in the trash to help control apple scab disease.

Water newly planted trees and shrubs to provide sufficient moisture and prevent winter damage. Add a two-inch layer of an organic mulch, such as shredded bark, around the base of plants to retain soil moisture and regulate soil temperature.

Save seeds from favorite flowers such as marigolds by allowing the flower heads to mature. Lay seeds on newspaper and turn them often to dry. Store the dry seeds in glass jars or envelopes in a cool, dry, dark place.

Hot peppers will keep best if stored after they are dry. Thread the peppers on a string and hang in a cool, dry place.

Fall is a good time for improving your garden soil. Add manure, compost and leaves to increase the organic matter content.

If volunteer tree seedlings, such as elm, mulberry, hackberry or maple are found growing in your yard, remove them as soon as possible. If left too long, they will take over gardens and other landscape plantings.

Do not wait for frost warnings to move your plants indoors. Temperatures of 45° F or lower can damage many tropical house plants.

Medically Important Spiders in Nebraska: The Black **Widow** and **Brown Recluse**

By Kait Chapman, Extension Educator in Lancaster County

There are many species of spiders that can be found around and indoor homes and buildings. While most of these spiders are relatively harmless, there are two to be on the lookout for: the black widow and the brown recluse.

Black Widows

Black widow spiders are only occasionally found in Nebraska. These spiders create tangled, messy webs of sticky silk and are easily identified by the red hourglass shape on the underside of the adult female's abdomen. Male black widows, which are often eaten by the female, are much smaller and gray or brown in color.

Black widow venom contains a nerve poison that causes severe pain at the site



Photo of adult female Black Widow magnified

Photos by UNL Department of Entomology

of the bite which soon spreads throughout the body. Other symptoms may include elevated blood pressure, nausea and difficulty breathing. Bites, albeit rare, most often occur when a female is protecting an egg sack in her web.

Brown Recluses

While their size can vary, brown recluse spiders are approximately the size of a

quarter, with lackluster coloring and long, thin legs. Brown recluses have a characteristic violin or fiddle-shaped marking on their carapace, which is used to distinguish

them from other brown spiders that may be found indoors.

As their name suggests, brown recluse spiders are reclusive and prefer to stay away from human activity in the home. They are most often found in quiet, undisturbed areas like basement corners, closets, garages, etc. Most brown recluse bites occur when putting on clothes or shoes and, inadvertently, trapping a spider against skin.

Brown recluse venom contains a cytotoxin that causes large ulcerous sores around the bite site.

Spider Bites

It is impossible to diagnose a spider bite by the

presence of a bite alone. If you suspect you have been bitten by a brown recluse or black widow, seek medical treatment as soon as possible.

LOCAL INSECT DIAGNOSTIC SERVICES

Nebraska Extension in Lancaster County offers free insect and spider diagnostic services, including identification and management recommendations. Residents may mail or bring their samples to 444 Cherrycreek Road, Suite A, Lincoln, NE 68528 during office hours M-F, 8 a.m.–4:30 p.m. Please address any envelopes to Kait Chapman. You may also email photos to kchapman13@unl.edu.



Photo of adult Brown Recluse magnified

Herd Health Vaccinations

By Connor Biehler, Beef Systems Extension Educator

Weaning and shipping can be a stressful time in a calf's life and can cause acute illness. These conditions can include taking in high-risk cattle to co-mingle, weaning your own calves to finish or purchasing ranch source cattle. Importantly, it is our duty as stewards and caretakers of these animals to reduce these stress factors and mitigate illness. Preconditioning against disease can improve calf performance through the growing and finishing phase.

Bovine respiratory disease (BRD) is the most prevalent cause of sickness and death of

weaned calves. This emphasizes the need for producers to prepare a calf's immune system to prevent BRD. This step begins long before weaning or shipping and starts with preparing the mother's immune system. Ideally, all replacement heifers are immunized for IBR, PI3, BVD and BRSV using a modified live virus (MLV) vaccine prior to entering the breeding herd. For the greatest effectiveness, two doses should be given no less than 21 days apart. Additionally, a booster should be administered one to two months before breeding season and pregnant cows/heifers should never receive an MLV vaccine.

An annual booster for all cows will improve BRD colostrum antibodies and decreases likelihood of BRD virus infections contaminating the herd. A vaccination program for calves

should begin when they are 2–3 months old to combat BRD and clostridial (blackleg) diseases. This will provide them with proper immune responses to BRD MLV vaccines.

Importantly, since bulls

will not be turned out, pregnancy loss can be disregarded.

Preweaning vaccinations should be administered 4–8 weeks prior to weaning. These should include a four-way viral (IBR, PI3, BVD and BRSV), BRD bacterial (including Mannheimia hemolytica) and clostridial inoculation. Many BRD MLV vaccines include a labeled warning against administering to calves nursing pregnant cows. It is important to work with your herd veterinarian to determine the proper BRD vaccine for preweaning of calves.



Troy Walz, Extension Educator in West Central Regional Office

JOIN 4-H!

4-H Grows Confident, Capable and Caring Kids!



Adults – help youth grow by volunteering!

4-H is America's largest youth development organization. All youth ages 5–18 may join 4-H. There are no fees to join 4-H in Lancaster County.

4-H INFORMATION NIGHT

Tuesday, Oct. 5 • 6pm
Lancaster Extension Education Center
444 Cherrycreek Rd., Lincoln

Fun door prizes

Free refreshments

See examples of 4-H projects such as STEM, art and other exhibits, plus rabbits and llamas

Part of National 4-H Week, Oct. 3–9

Current directed health measures will be followed.

Can't make it to Information Night? To get involved, call 402-441-7180 or fill out the interest form at lancaster.unl.edu/4h/interestform.



4-H State Public Speaking Top Results

Over 138 4-H youth from 49 different counties across the state competed in the state 4-H Public Speaking Contest in June. The following Lancaster County 4-H'ers earned purple ribbons.

SPEECH CONTEST

- Intermediate division: Melanie Wiggins (1st), Holly Bowen, Morgan Gabel, Kamryn Wanser
- Senior division: Acacia Carlson (4th), John Donlan

PUBLIC SERVICE ANNOUNCEMENT CONTEST

- Intermediate division: Melanie Wiggins (1st), Mia Crawford, Vanessa Peterson
- Senior division: Ella Hendrickson

Eight Lancaster 4-H Clubs Receive Governor's Ag Excellence Awards

Congratulations to the eight Lancaster County 4-H Clubs who received 2021 Governor's Agricultural Excellence Awards: **Blazing Saddles, Five Star 4-H'ers, Fusion 4-H'ers, Joe's Clover Knights, 4-H Teen Council, NE Equestrian, Southern Lancaster Kids** and **Unified Showing**. The awards are sponsored by the Nebraska 4-H Foundation and Nebraska Investment Finance Authority.

Sam's Club Donates \$1,000 to 4-H Council



(L-R) Sam's Club Manager Jodi Curtis and 4-H Council President Sarah Hansen.

The Lincoln Sam's Club on Andermatt Drive recently donated \$1,000 to Lancaster County 4-H Council through a store grant! Lancaster County 4-H Council raises funds to help support local 4-H youth programs, activities and scholarships.

4-H Announcements FOR ENROLLED 4-H'ERS OR 4-H VOLUNTEERS



The 4-H Youth Development Program is open to all youth ages 5–18 and free to join in Lancaster County. If interested in joining or volunteering, call 402-441-7180.

HORSE AWARDS NIGHT, SEPT. 30

The annual Lancaster County 4-H Horse Awards Night will be Thursday, Sept. 30, 6:30 p.m. at the Lancaster Extension Education Center, 444 Cherrycreek Road, Lincoln. Awards presentation includes Incentive Awards, Horsemanship Levels, All-Around Awards, Herdsmanship, Top Judging buckles and ribbons, and a few surprise awards! Come help celebrate the outstanding accomplishments of the 2021 Lancaster County 4-H Equestrians! Current directed health measures will be followed, including wearing face coverings.

4-H LEADER UPDATE, OCT. 21

All 4-H leaders and volunteers helping with clubs and independent members are encouraged to attend the Fall 4-H Leader Update on Thursday, Oct. 21 at the Lancaster Extension Education Center, 444 Cherrycreek Road, Lincoln. You may attend either the 9 a.m. or 6:30 p.m. session. Each session will be available via zoom or in-person and will focus on 4-H club organization, new information for the upcoming 4-H year, opportunities for your 4-H members and more. This is a great time to connect with other parents and leaders. You MUST preregister by Monday, Oct. 11 by calling 402-441-7180 or emailing kristin.geisert@unl.edu. Please indicate which time you plan to attend and if you will be attending in-person or via zoom. Current directed health measures will be followed.

PAPER BASKET WORKSHOP, NOV. 6

4-H youth ages 8 and up are invited to a "Design My Place" workshop to engineer and construct a woven paper basket using recycled newspapers and wire on Saturday, Nov. 6 from 9 a.m.–12 noon at the Lancaster Extension Education Center, 444 Cherrycreek Road, Lincoln. No cost to attend. Learn paper weaving techniques to make a home décor basket. Adults are encouraged to attend to help, especially if their child is 8 or 9 years old. Register by Monday, Nov. 1 by calling 402-441-7180 or emailing kristin.geisert@unl.edu. Bring a needle nose wire cutter for cutting wire. All other supplies will be provided. Current directed health measures will be followed.

4-H COUNCIL SEEKS NEW MEMBERS

Lancaster County 4-H Council is composed of youth (9th grade or higher) and adults working together. Meetings are held the first Tuesday of each month at 6 p.m. If interested in serving on 4-H Council, complete the "Application for New Members" online at <http://lancaster.unl.edu/4h/council>.



HEART OF 4-H VOLUNTEER AWARD

Tim & Jenny Higgins

Lancaster County 4-H is proud to announce Tim and Jenny Higgins of Crete as co-winners of the September "Heart of 4-H Award" in recognition of outstanding volunteer service.

They have volunteered for 4-H for 10 years in a variety of roles:

- Amy is a project leader with the Tails N' Trails 4-H horse club in Lancaster County, and Tim is a parent volunteer. Both help with club community service projects, such as painting the Salt Creek Wranglers arena.
- Tim has been an announcer at the 4-H/FFA Livestock Premium Auction at the Lancaster County Super Fair.
- They were leaders of the Dynamic 4-H club in Saline County.
- They helped plant the Raising Nebraska outdoor garden at Fonner Park in Grand Island.

Tim says, "I like being a 4-H volunteer because I want to be sure every family has the best 4-H experience. Our family would not be a 4-H family if it were not for other volunteers, so I make sure to give back by volunteering myself. You also get to experience some amazing things and meet some great people as a volunteer that you wouldn't otherwise. My favorite experience as a 4-H volunteer was planting the Raising Nebraska outdoor garden in 2015 with Jenny and Caraline [daughter]. We spent the entire day planting fruit trees in the Nebraska-shaped garden. Every time we go back to Raising Nebraska, we get to see those trees and recall the experience."

Jenny says, "I like being a 4-H volunteer because it is a way I can give back to our youth. I enjoy watching the kids learn and grow through their work with animals and projects. 4-H offers so many opportunities to kids with and without livestock. I want as many people as possible to be able to experience 4-H and grow in what is interesting to them."

Lancaster County 4-H thanks Tim and Jenny for donating their time and talents. People like them are indeed the heart of 4-H!



HEART OF 4-H VOLUNTEER AWARD

JJ & Amy Frink

Lancaster County 4-H is proud to announce JJ and Amy Frink of Lincoln as co-winners of the October "Heart of 4-H Award" in recognition of outstanding volunteer service.

They have volunteered with Lancaster County 4-H for nearly five years. They help co-lead the Rusty Spurs 4-H horse club and previously helped with the Boots N Hooves 4-H horse club as parent volunteers. At the Lancaster County Super Fair, they are superintendents of the 4-H Roping/Working Ranch show and help set up for many other horse shows.

"We like being 4-H volunteers because we get to watch the kids grow and learn with their horse projects year by year," Amy said. "Our favorite experience as 4-H volunteers is seeing the kids faces when they win a class."

4-H staff member Kate Pulec said, "This year at the Super Fair, JJ and Amy helped at the 4-H horse shows whenever and wherever there was a need. They helped set up and tear down the jumping show and miniature horse show. For years, they have supplied the goats for goat tying and do not charge 4-H."

Lancaster County 4-H thanks JJ and Amy for donating their time and talents. People like them are indeed the heart of 4-H!



4-H Golf Tournament Fundraiser, Oct. 3

The 4-H Council Golf Tournament Fundraiser will be held Sunday, Oct. 3 at the Woodland Hills Golf Course, 6000 Woodland Hills Drive, Eagle, NE with a 1 p.m. shotgun start. This tournament is a four-person scramble. Registration fee is \$75 per golfer or \$300 per team. For reservations, call Woodland Hills at 402-475-4653.

For hole, other sponsorships or prize donations, contact Mitch Sump at 402-432-1031 or mitchsump1996@gmail.com or Jerry Morris at 402-261-9861 or packmn69@yahoo.com.

Youth Science Day for Homeschooled Youth

Nebraska Extension in Lancaster County will present a Youth Science Day for Homeschooled Youth on Tuesday, Nov. 2, 9–11:30 a.m. at the Lancaster Extension Education Center, 444 Cherrycreek Road, Lincoln. Open to all homeschooled youth, grades K–6th (most lessons are geared towards 3rd–5th graders). Fee is \$5 per youth. Youth will focus on lessons involving science, technology, engineering and math (STEM) activities. Preregistration requested by Monday, Oct. 25 by contacting Kate Pulec at 402-441-7180 or kpulec3@unl.edu.

Slime, Jelly Worms & Goo: Food Science Workshop, Dec. 4

All youth ages 8–18 are invited to slip into their lab coat and be a scientist at the Slime, Jelly Worms & Goo: Food Science workshop to be held Saturday, Dec. 4, 9–11:30 a.m. at the Extension Education Center, 444 Cherrycreek Road, Lincoln. Workshop will be taught by Trevor Kauer, a University of Nebraska–Lincoln graduate student, who taught last year's 4-H Food Science workshop.

Lab coats and personalized lanyards will be provided as well as the supplies for the fun experiments. No registration fee. Register by Monday, Nov. 15 by calling 402-441-7180 or emailing kristin.geisert@unl.edu. Please give your shirt size when registering. Please indicate if your child has a lab coat from last year that still fits, so another coat is not ordered.

Note early registration deadline so lab coats can be ordered. This will be an in-person event. Current directed health measures will be followed.

State 4-H Horse Expo Top Results

The 2021 Fonner Park State 4-H Exposition was held July 10–14 in Grand Island. Here are the Lancaster County 4-H'er purple and top 10 ribbon winners. Complete results and additional photos are at <http://4h.unl.edu/horse/state-expo>.

JUDGING TEAMS: All teams coached by Roger Bell.

- (Ch) Rayley Burnside, Emmi Dearmont, Kali Maytum, Erin Oldemeyer
- (Res Ch) Ellie Bunz, Lola Bunz, Kiara Eppenbach, Josie Johnson
- (3rd) Samantha Fox, Caraline Higgins, Taylor Root
- (5th, blue ribbon) Bailey Docter, Sydnee Docter, Tayler Docter, Faith Oldemeyer
- (7th blue ribbon) Brooklyn Blunt, Sydnee Fijolek, Ella Wiczorek, Lily Wooledge.

JUDGING INDIVIDUALS

Emmi Dearmont (Ch), Erin Oldemeyer (Res Ch), Ellie Bunz (3rd), Josie Johnson (4th), Taylor Root (5th), Rayley Burnside (6th), Samantha Fox (8th), Tayler Docter (9th)

MINIATURE/SHETLAND PONY HALTER MARES

Paige Schepers (Ch)

MINIATURE/SHETLAND PONY HALTER GELDINGS

Collin Schepers (Res Ch), Emmi Dearmont (4th, blue ribbon)

3–5 YEAR OLD HALTER MARES

Ava Smith (8th)

6–10 YEAR OLD HALTER GELDINGS

Morgan Roof (5th), Savannah Wubbels (7th, blue ribbon)

11+ YEAR OLD HALTER MARES

Scarlett Battles (8th)

ELEMENTARY SHOWMANSHIP

Lola Bunz (Ch)

JUNIOR SHOWMANSHIP

Ava Smith (3rd), Elizabeth Funk

SENIOR SHOWMANSHIP

Lillie Beach (8th), Ellie Bunz, Emmi Dearmont, Sidney Froistad, Kali Maytum

2 YEAR OLD WESTERN PLEASURE

Cadi Wilbeck (Ch)

WESTERN PLEASURE PONIES

Taylor Root (3rd, blue ribbon)

ELEMENTARY WESTERN PLEASURE

Lola Bunz (3rd, blue ribbon), Josie Johnson (5th)

JUNIOR WESTERN PLEASURE

Morgan Roof (5th), Scarlett Battles (9th), Elizabeth Funk, Addison Gropp

SENIOR WESTERN PLEASURE

Ellie Bunz (Res Ch), Michaela Bunz (9th)

ELEMENTARY WESTERN HORSEMANSHIP

Josie Johnson (7th, blue ribbon)

JUNIOR WESTERN HORSEMANSHIP

Elizabeth Funk (6th), Caraline Higgins

SENIOR WESTERN HORSEMANSHIP

Emmi Dearmont (8th), Kali Maytum, Ellie Bunz

JUNIOR RANCH PLEASURE

Lily Wooledge, Taylor Root

SENIOR RANCH PLEASURE

Sidney Froistad (5th), Cadi Wilbeck

ENGLISH & WESTERN DRESSAGE

Sidney Froistad (Res Ch), Anne Cashmere (3rd), Callahn Robinson (5th, blue ribbon)

ADVANCED HUNTER UNDER SADDLE

Sidney Froistad (4th, blue ribbon)

ADVANCED WESTERN HORSEMANSHIP

Sidney Froistad (8th, blue ribbon)

ADVANCED WESTERN PLEASURE

Clara Bradbury (10th, blue ribbon)

HUNTER HACK

Emmi Dearmont (Res Ch), Anne Cashmere (4th, blue ribbon), Callahn Robinson (5th, blue ribbon)

SENIOR HUNTER UNDER SADDLE

Lillie Beach (Res Ch), Kali Maytum (9th)

JUNIOR HUNTER UNDER SADDLE

Morgan Roof (4th), Ava Smith (6th), Scarlett Battles (8th), Josie Johnson (10th), Elizabeth Funk, Taylor Root

SENIOR HUNT SEAT EQUITATION

Emmi Dearmont (3rd, blue ribbon)

JUNIOR HUNT SEAT EQUITATION

Taylor Root (7th), Morgan Roof (10th, blue ribbon)

SENIOR RANCH RIDING

Sidney Froistad (Ch)

SENIOR POLE BENDING

Cadi Wilbeck (5th)

ELEMENTARY POLE BENDING

Josie Johnson (Ch)

SENIOR BARREL RACING

Clara Bradbury (10th), Cadi Wilbeck

JUNIOR BARREL RACING

Elizabeth Funk (3rd)

ELEMENTARY BARREL RACING

Josie Johnson (3rd)



Champion judging team (one youth not pictured)



Photos ©2021 Foye Zmek Photography



Super Fair 4-H/FFA Top Results

4-H/FFA complete results, photos and videos are online at <http://lancaster.unl.edu/4h/fair>



Clockwise from left: Champion 150th Anniversary Exhibit, Top Cookies Exhibit, Alice Doane Memorial Wool Award, Best of 4-H Poultry Show, Elite Showmanship Contest, Rabbit All-Around Showman Award champion and reserve champion, and Horse English Showmanship Junior champion.

Ch=Champion; Res = Reserve

Top Static Exhibits

150TH ANNIVERSARY EXHIBITS

Overall Ch: Ella Hendricksen
General Areas: Ella Hendricksen
Home Environment: Ella Hendricksen
Heritage: Ella Hendricksen
Photography: Khloe Cuttlers
Clover Kids: Ian Bettenhausen

GENERAL AREAS

Poster: Noah Jelinek
Quilt Ch: Madelyn Kreifels
Quilt Res Ch: Reese Dell
Dog Static Exhibit: Anna Kurtzhals
Rabbit Static Exhibit: Kathryn Weaver

SCIENCE, ENGINEERING & TECHNOLOGY

Rocketry: Evan Mittan-DeBuhr
Woodworking: Abigail Kreifels
Safety: Parker Hansen
Engineering: Ethan Gabel

FOOD & NUTRITION

Yeast Product: Vanessa Peterson
Quick Bread: Clara Johnson
Food Preservation: Mindy Bartels
Cake or Pie: Tessa Cockerill
Cookie: Caleb Hundley

HUMAN DEVELOPMENT

Human Development: Clare Bauman

HOME ENVIRONMENT

Top 3: Bridget Clarke
Top 3: Meredith Marsh
Top 3: Anne Marie Wurtz
Leta Bremer Guenther Memorial Needle Arts Award:
Evan Mittan-DeBuhr

HERITAGE

Heritage: Tyson Wiggins

PHOTOGRAPHY

Level 1: Elizabeth Hilkemann
Level 2: Abby Kruse
Level 3: Riley Peterson
Favorite Photo: Kaylie Waite
Creative Photo: Samuel Livingston

CLOTHING

STEAM 1 Clothing: Grace Mentzer
STEAM 2 Clothing: Vanessa Peterson
STEAM 3 Clothing: Mindy Bartels
Beyond the Needle: Vanessa Peterson
Accessory: Gabriel Livingston
Fiber Arts - Crocheting: Clare Bauman
Shopping in Style: Vanessa Peterson
Alice Doane Memorial Wool Award: Mindy Bartels

HORTICULTURE

Vegetable: Katie Fisher
Herb: Laurel Frogge
Annual Flower: Evan Mittan-DeBuhr
Perennial Flower: Laurel Frogge
Rose: Evan Mittan-DeBuhr
Specimen Plant: Reagan Breuer

CONSERVATION & WILDLIFE AND FORESTRY

Conservation and Wildlife: Noah Jelinek
Forestry: Maria Polk

Top Contest Awards

LIFE CHALLENGE

Sr Ch: Clare Bauman
Sr Res Ch: Kylie Hansen
Jr Ch: Emily Bauman
Jr Res Ch: Vanessa Peterson

PRESENTATIONS

Premier Presenter: Kylie Hansen
Sr Ch: Kylie Hansen
Sr Res Ch: Jonah Calcara
Int Ch: Parker Hansen
Int Res Ch: Sydney Kruse
Jr Ch: Silas Pracheil
Jr Res Ch: Brooklynn Nelsen
Special Topic: Sydney Kruse

FASHION SHOW

Top 5 Ch: Clara Johnson
Top 5 Res Ch: Clare Bauman
Top 5: Madelyn Kreifels
Top 5: Olivia Mays
Top 5: Piper Pillard
Shopping in Style: Clara Johnson
Beyond the Needle: Emily Bauman
Make 1/Buy 1 Level 1: Lauren Johnson
Make 1/Buy 1 Levels 2 & 3: Olivia Mays
Clothing Level 1: Grace Mentzer
Upcycled Garment: Dayton Jons
Apron: Lauren Johnson
Garment Made for Others: Mindy Bartels
Attention Shoppers: Dayton Jons

PLANT SCIENCE

Horticulture: Kaily Wesley
Tree Identification: Catherine Polk
Grass & Weed Identification: Maria Polk

TABLE SETTING

Picnic Sr: Clare Bauman
Picnic Int: Kamryn Wanser
Picnic Jr: Alexa Smith
Casual Sr: Kaylie Waite
Casual Int: Bailey Petersen
Casual Jr: Brooklynn Nelsen
Formal Sr: Bridget Clarke
Formal Int: Mary Kate Ingracia
Formal Jr: Tenley Bauman
Birthday Sr: Mollie Clarke
Birthday Int: Vanessa Peterson
Birthday Jr: Madelyn Barnard

DOG VIRTUAL TRIVIA

Virtual Trivia Sr Ch: Shawn Phillips
Virtual Trivia Int Ch: Marylynn Rauert
Virtual Trivia Jr Ch: Alexa Smith
Virtual Trivia Jr Res Ch: Paige Schepers

SHOOTING SPORTS — TRAPSHOOTING

Junior 1st: Keaton Kopecky
Junior 2nd: Owen Savicky
Senior Short Yardage 1st: Ethan Donner
Senior Short Yardage 2nd: Brayden Korth
Senior Handicap 1st: Mason Geredes
Senior Handicap 2nd: Karter Kopecky
Senior High Overall 1st: Mason Geredes
Senior High Overall 2nd: Karter Kopecky

continued on next page

Top Animal Awards

ELITE SHOWMANSHIP

1st Place: Clara Johnson
2nd Place: Auren Burkey
3rd Place: Aleya Cuttlers
4th Place: Ellie Volk
5th Place: Jonathan Cook

LIVESTOCK JUDGING

Livestock Judging Sr Ch: Tatum Terwilliger
Livestock Judging Sr Res Ch: Noah Jelinek
Livestock Judging Int Ch: Clara Johnson
Livestock Judging Int Res Ch: Auren Burkey
Livestock Judging Jr Ch: Kyler Plugge
Livestock Judging Jr Res Ch: Micah Mueller

BEEF

Showmanship Supreme Ch: Josie Johnson
Showmanship Sr Ch: Clara Johnson
Showmanship Int Ch: Josie Johnson
Showmanship Jr Ch: Kanyon Plugge
Breeding Heifer Supreme Ch: Allison Walbrecht
Breeding Heifer Supreme Res Ch: Allison Walbrecht
Feeder Calf Supreme Ch: Emberlin Johnson
Feeder Calf Supreme Res Ch: Emberlin Johnson
Market Animal Supreme Ch: Brett Heinrich
Market Heifer Grand Ch: Kaelin Kuebler
Market Heifer Res Grand Ch: Josie Johnson
Market Steer Grand Ch: Brett Heinrich
Market Steer Res Grand Ch: Luke Johnson
Lancaster Born and Raised - Breeding Ch: Kanyon Plugge
Lancaster Born and Raised - Market Ch: Emberlin Johnson
Rate of Gain Market Steer Ch: Clara Johnson
Rate of Gain Market Heifer Ch: Kyler Plugge
Overall Cow/Calf Pair Ch: Ryan Kraus

BUCKET CALF

Current-year Bucket Calf Junior Ch: Kanyon Plugge
Second-year Bucket Calf Junior Ch: Kyler Plugge
Second-year Bucket Calf Intermediate Ch: Kolter Wellman

SHEEP

Showmanship Sr Ch: Auren Burkey
Showmanship Int Ch: Clara Johnson
Showmanship Jr Ch: Lauren Johnson
Market Lamb Grand Ch: Auren Burkey
Market Lamb Res Grand Ch: Michael Lockee
Lancaster Born and Raised Market Lamb Ch: Michael Lockee
Lancaster Born and Raised Market Lamb Res Ch: Grant Johnson
Breeding Ewe Supreme Ch: Auren Burkey
Rate of Gain Ch: Josie Johnson
Rate of Gain Res Ch: Grant Johnson
Pen of 3 Ch: Noah Jelinek

SWINE

Showmanship Sr Ch: Ellie Volk
Showmanship Int Ch: Clara Johnson
Showmanship Jr Ch: Lauren Johnson
Market Swine Grand Ch: Grace Fahleson
Market Swine Res Grand Ch: Ellie Volk
Breeding Gilt Ch: Grace Fahleson
Breeding Gilt Res Ch: Olivia Vanderford
Pen of Three Ch: Toby Becker
Pen of Three Res Ch: Derek Bruss
Pick-a-Pig Market Swine Grand Ch: Hannah Simpson
Pick-a-Pig Market Swine Res Grand Ch: John Sump
Carcass Swine Ch: Bailey Docter
Carcass Swine Res Ch: Connor Nielsen

DAIRY GOAT/CATTLE

Dairy/Pygmy Goat Showmanship Sr Ch: Corianna Kubicek
Dairy/Pygmy Goat Showmanship Jr Ch: Ezra Kubicek
Dairy Goat Supreme Ch: Ezra Kubicek
Dairy Goat Res Supreme Ch: Peter LaPlante
Pygmy Goat Ch: Evelyn Smith
Dairy Cattle Showmanship Sr Ch: Isabella Hytrek

MEAT GOAT

Showmanship Sr Ch: Aleya Cuttlers
Showmanship Int Ch: Clara Johnson

Showmanship Jr Ch: Josie Johnson
Market Goat Overall Grand Ch: Heather Lange
Market Goat Overall Res Grand Ch: Clara Johnson
Breeding Goat Overall Ch: Isabella Hytrek
Breeding Goat Overall Res Ch: Heather Lange
Lancaster Born & Raised Ch: Heather Lange
Rate of Gain Ch: Khloe Cuttlers
Rate of Gain Res Ch: Lilian Bogle

RABBIT

All-Around Showman Award Ch: Rhianna Metcalf
All-Around Showman Award Res Ch: Holly Bowen
Showmanship Sr Ch: Rhianna Metcalf
Showmanship Int Ch: Holly Bowen
Showmanship Jr Ch: Marylynn Rauert
Best 6 Class Ch: Holly Bowen
Best 6 Class Res Ch: Holly Bowen
Best 4 Class Ch: Lawrence Rauert
Best 4 Class Res Ch: Emma Thomson
Judging Contest Sr Ch: Rhianna Metcalf
Judging Contest Int Ch: Emma Thomson
Judging Contest Jr Ch: Reese Rockenbach
Breed Identification Contest Sr Ch: Rhianna Metcalf
Breed Identification Contest Int Ch: Holly Bowen
Breed Identification Contest Jr Ch: Grace Mentzer
Breeders Choice Sr Ch: Andrew Frain

HOUSEHOLD PETS

Mammal Ch: Rachel Koch
Mammal Res Ch: Deborah Garza
Non-Mammal Ch: Kennedy Powell
Non-Mammal Res Ch: Collin Schepers

POULTRY

Showmanship Sr Ch: Noah Jelinek
Showmanship Jr Ch: Lawrence Rauert
Judging Contest Sr Ch: Noah Jelinek
Judging Contest Jr Ch: Kamryn Wanser
Quiz Bowl Sr Ch: Noah Jelinek
Quiz Bowl Jr Ch: Marylynn Rauert
Best of 4-H Poultry Show: Zach Pittman
Large Fowl Grand Ch: Sarah Lange
Water Fowl Grand Ch: Zach Pittman
Bantam Grand Ch: Noah Jelinek

DOG

Trophy Showmanship Grand Ch: Emmi Dearmont
Showmanship Sr Ch: Bella Croghan
Showmanship Int Ch: Ruby Dean
Showmanship Beginning Ch: Paige Schepers
Pre-beginning Agility A - Level 1 Ch: Bella Croghan
Obedience - Beginning A Ch: Owen King
Obedience - Beginning B Ch: Allison Schilf

CAT

Long Hair Best in Show: Dayton Jons
Short Hair Best in Show: Dayton Jons
Working Cat Best in Show: Paige Schepers

HORSE

English Showmanship Sr Ch: Emmi Dearmont
English Showmanship Jr Ch: Ava Smith
English Showmanship Elem Ch: Lauren Johnson
English Baby Green Equitation Ch: Callahn Robinson
English Hunter/Saddleseat Ages 4 and Up Grand Ch: Clara Bradbury
English Hunter/Saddleseat Ages 4 and Up Res Grand Ch: Morgan Roof
English Hunter/Saddleseat Aged Horse Grand Ch: Amelia Proffitt
Miniature Showmanship Elem Ch: Kiara Eppenbach
Western Showmanship Sr Ch: Kali Maytum
Western Showmanship Elem Ch: Lola Bunz
Groom and Care Ch: Quinn Reid
Western Stock Horses Ages 4 and Up Grand Ch: Lola Bunz
Western Stock Horses Ages 4 and Up Res Grand Ch: Ava Smith
Western Stock Horses Aged Horse Grand Ch: Allison Renken
Western Stock Horses Aged Horse Res Grand Ch: Shea Frink
Working Ranch Horse Sr Ch: Clara Bradbury

Additional horse awards will be announced at 4-H Horse Awards Night.



Suing Family Receive Nebraska 4-H Multi-Generational Volunteer Award

Nebraska 4-H offered new statewide volunteer recognition awards this year. Ron and Barb Suing's family received the 2021 Multi-Generational Volunteer Award!

- 1st generation: Ron and Barb Suing
- 2nd generation: Marlo Yakel and Nikki Casburn
- 3rd generation: Marlo's children, Kylee Schirmer, Taylor Yakel and Ryan Yakel. Nikki's children: Andrew Casburn, Daniel Casburn and Thomas Casburn.

Lancaster County 4-H recognized the Suing family for their award with an informal presentation at the Lancaster County Super Fair. Nebraska 4-H recognized all the volunteer recognition award winners at a formal ceremony at the Nebraska State Fair.

Barb Suing has volunteered over 36 years and Ron over 33 years! At the Lancaster County Fair, Barb is a longtime Food superintendent and Ron is a longtime STEM superintendent. They were also club leaders and superintendents of the Bicycle Safety Contest. Ron has taught rocketry and woodworking workshops, including in Scotts Bluff and Otoe counties. Both were longtime volunteers at the Nebraska State Fair in 4-H static exhibit areas.

Two children and six grandchildren volunteer as superintendents, workshop volunteers and more!

Livestock Scholarship Recipients

The Lancaster County 4-H Livestock Booster Club awards two \$500 college scholarships each year which are presented at the Lancaster County Super Fair 4-H/FFA Livestock Premium Auction. A portion of the proceeds from the auction funds these scholarships. This year's scholarship recipients were Grant Johnson and Brett Heinrich.



State Fair 4-H Top Results

Congratulations to the Lancaster County 4-H'ers who showcased their projects at the 2021 Nebraska State Fair! Here are the Lancaster County 4-H youth winners of special awards and purple ribbons. Complete results are online at www.nebraska4hresults.com.

Top Static Exhibit

DESIGN GALLERY SPECIAL SELECTIONS & PURPLE RIBBONS

32 Sketchbook Crossroads, Portfolio Pathways or Design Decisions exhibits and 4 Fashion Show exhibits were selected to be displayed in the 4-H Design Gallery at State Fair.

Isabel Buss	Quilt Quest
Galen Goforth	Design Decisions
Clara Johnson	Constructed STEAM Clothing 3
Madelyn Kreifels	Quilt Quest
Vanessa Peterson	STEAM Clothing 2 – Simply Sewing

LOFT GALLERY FINE ARTS EXHIBITION & PURPLE RIBBONS

13 Sketchbook Crossroads or Portfolio Pathway exhibits were selected to be displayed at the University of Nebraska-Lincoln East Union Loft Gallery in November.

Anne Marie Wurtz Portfolio Pathways Mixed Media and Sketchbook Pencil

PHOTOGRAPHY SPECIAL SELECTIONS

Selected for display during the next year at the UNL Animal Science Building or UNL East Campus Exhibition (tentatively at the Visitor's Center).

Clare Bauman	UNL East Campus Exhibition
Abby Kruse	UNL East Campus Exhibition
Catherine Pol	UNL Animal Science Department Exhibition

RAINBOW RIBBON RECOGNITION & PURPLE RIBBONS

Rainbow Recognition awards recognizes unique and outstanding items.

Reese Dell	Heritage – 4-H Member Scrapbook [Blue Ribbon]
Katie Fisher	Floriculture – Flower Garden Promotion Poster Horticulture – Sweet (non-Bell) Peppers
Adam Gabel	Heritage – Local History Scrapbook/Notebook
Parker Hansen	Horticulture – Carrots [Blue Ribbon]
Elizabeth Hilkemann	Entomology – Reports or Journal
Clara Johnson	Constructed STEAM Clothing 3 – Garment
Kolbee Kroemer	Entomology Display Third or More Years
Gabriel Livingston	STEAM Clothing – Beyond The Needle – Accessory
Vanessa Peterson	STEAM Clothing 2 – Simply Sewing – Upcycled Garment
Claire Polk	Floriculture – Flower Notebook
Alexa Smith	Citizenship & Civic Education – Written Citizenship Essay
Tyson Wiggins	Heritage – Depicting Heritage of Family or Community
Anne Marie Wurtz	Mixed Media Accessory Colored Pencil Drawing

TOP AWARDS & PURPLE RIBBONS

Emily Bauman	Quilt Quest – Computer Exploration Winner
Isabel Buss	Outstanding Quilt Exhibit Level 1 [Small]
Madelyn Kreifels	Quilt Quest – Premiere Quilt Winner [Hand Quilted]

PURPLE RIBBONS

Madelyn Barnard	Human Development – Family Involvement Entry
Mindy Bartels	STEAM Clothing 3 – A Stitch Further – Specialty Wear Food Preservation – Unit 3: Canning, 1 Jar Jelled Exhibit
Clare Bauman	Heritage – Level II: 4-H Member Scrapbook Photography – Unit II: Abstract Display or Print Photography – Unit II: Creative Techniques & Lighting Human Development – Math STEAM Clothing – Beyond the Needle – Color Wheel Shopping in Style – Best Buy for Your Buck General Clothing – Sewing for Profit Cooking 401 – Double Crust Fruit Pie Cooking 401 – Family Food Tradition Entrepreneurship Investigation – Marketing Package Entrepreneurship Investigation – Photos of an Original Project
Emily Bauman	Heritage – Level I: 4-H Member Scrapbook
Tenley Bauman	Leadership & Citizenship – Care Package Leadership & Citizenship – Service Items Horticulture – Vegetable Seed Display
Reagan Breuer	Forestry – Leaf Display Cooking 201 – Coffee Cake

Jonah Calcara
Mollie Clarke
Aleyna Cuttlers
Reese Dell

Katie Fisher
Sarah Fisher
Anna Fousek

Andrew Frain

Anne Friesen
Laurel Frogge

Adam Gabel

Ethan Gabel

Morgan Gabel

Morgan Gee
Nicole Gee
Galen Goforth
Kylie Hansen

Parker Hansen

Ella Hendricksen

Jaisah Huber

Mary Kate Ingracia

Noah Jelinek

Anna Johnson

Clara Johnson

Josie Johnson
Lauren Johnson

Abby Kruse

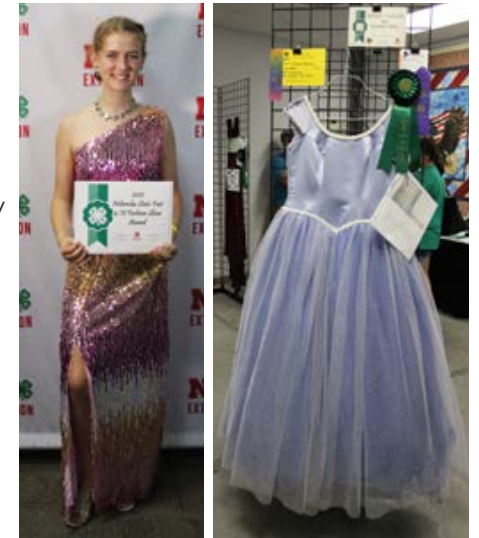
Sydney Kruse

Samuel Livingston
Nettie Lunquist
Meredith Marsh
Olivia Mays
Grace Mentzer
Evan Mittan-DeBuhr

Christopher Moore
Carley Parrott

Bailey Petersen
Riley Peterson

Communications – Digital Media
Cooking 201 – Loaf Quick Bread
Design Decision – Accessory 2D
Heritage - Level I: Beginning – Other Exhibits
Design Decision – Accessory 2D
Design Decision – Accessory: Needlework/Stitchery
Cooking 201 – Baking with Whole Grains
Horticulture – Salad Tomatoes
Leadership & Citizenship – Service Items
Geospatial – GPS Notebook
Cooking 201 – Creative Mixes
Cooking 201 – Non-Traditional Baked Product
Crochet – Level 2 Crocheted Clothing
Floriculture – Any Other Annual or Biennial
Floriculture – Rudbeckia/Black-Eyed Susan
Horticulture – Any Other Herb
Citizenship – i2i – Biography
Heritage – Level I: Book Review
Heritage – Level I: Heritage Poster or Flat Exhibit
Conservation & Wildlife – Wildlife Essay
Conservation & Wildlife – Wildlife Tracks
Food Preservation – Unit 3: Canning, 3 Jar Tomato
Food Preservation – Unit 3: Canning, 1 Jar Tomato
Food Preservation – Unit 3: Canning, 3 Jar Tomato
Food Preservation – Unit 4: Canning, 1 Jar Meat
Conservation & Wildlife – Wildlife Connections
Conservation & Wildlife – Wildlife Tracks
Food Preservation – Unit 3: Canning, 1 Jar Tomato
STEAM Clothing – Beyond the Needle – Fashion Accessory
STEAM Clothing 2: Simply Sewing – Top
Design Decision – Accessory: Made from Ceramic or Tile
Photography – Unit II: Creative Composition
Design Decision – Accessory: Made from Metal
Design Decision – Accessory: Textile 2D
Safety – First Aid Kit
Design Decision – Accessory – Textile – 2D
Safety – First Aid Kit
Heritage – Level II: Book Review
Heritage – Level II: Beginning – Other Historical Exhibits
Conservation & Wildlife – Wildlife Essay
Photography – Unit II: Creative Composition
Photography – Creative Techniques & Lighting Display
Sketchbook Crossroads – Pencil or Chalk Drawing
General Foods – Food Science Explorations
Design Decision – Made from Metal
Conservation & Wildlife – Wildlife Essay
Photography – Unit II: Abstract Display or Print
My Financial Future – Three Smart Goals
Conservation & Wildlife – Wildlife Arts
Design Decision – Made from Ceramic or Tile
Cooking 201 – Biscuits or Scones
Cooking 301 – Shortened Cake
Cooking 301 – Dinner Rolls
Cooking 201 – Loaf Quick Bread
Cooking 301 – Dinner Rolls
Cooking 301 – Specialty Rolls
Photography – Unit II: Creative Techniques & Lighting
Photography – Unit II: Expression through Color
Photography – Unit II: Creative Composition
Photography – Unit II: Expression through Color
Photography – Unit III: Advanced Techniques & Lighting
Sketchbook Crossroads – Sculpted or Thrown Accessory
Design Decision – Outdoor Living
Cooking 201 – Coffee Cake
My Financial Future – 3 Smart Goals
Design Decision – Accessory: Needlework/Stitchery
Floriculture – Any Other Annual or Biennial
Floriculture – Marigold
Food Preservation: Canning, 1 Jar Jelled
Heritage – Level I: Framed Family Photo
Design Decision – Furniture
Cooking 201 – Coffee Cake
Photography – Unit III: Advanced Techniques & Lighting
Photography – Unit III: Level 3 Portfolio



Lancaster County 4-H youth had five Design Gallery selections and 1 of 5 top Fashion Show awards



continued on next page

Vanessa Peterson	STEAM Clothing 2 – Simply Sewing – Textile Accessory STEAM Clothing 2 – Simply Sewing – Romper or Jumpsuit Shopping in Style – Mix, Match & Multiply Cooking 201 – Biscuits or Scones Cooking 201 – Creative Mixes Cooking 201 – Healthy Baked Product Cooking 301 – Whole Wheat or Mixed Grain Bread
Morgan Pillard Brianna Pittman Catherine Polk	Floriculture – Sedum Cooking 301 – Specialty Rolls Photography – Unit II: Expression through Color Forestry – Leaf Display
Claire Polk	Heritage – Level I: Other Historical Exhibit Sketchbook Crossroads – Ink Drawing
Maria Polk Josephine Polk	Forestry – Leaf Display Food Preservation – Unit 2: Dried Herbs Food Preservation – Unit 2: Dried Vegetable
Micah Pracheil Silas Pracheil Marylynn Rauert Greta Rogers Eliese Schwinck	Photography – Unit II: Creative Composition Entomology – Macrophotography Cooking 201 – Biscuits or Scones Heritage – Level I: Scrapbook Heritage – Level II: 4-H Member Scrapbook Portfolio Pathways – Acrylic Painting General Foods – Cooking Basics Recipe File Fire Safety – Fire Prevention Poster Safety – First Aid Kit
Emmy Sheldon Linsey Sheldon Alexa Smith	Leadership & Citizenship – Public Adventure Poster Leadership & Citizenship – Service Items General Foods – Food Science Explorations
John Sump Kamryn Wanser	Cooking 401 – Specialty Pastry Design Decision – Accessory: Recycled/Upcycled Fire Safety – Fire Prevention Poster
Kathryn Weaver Kaily Wesely Cora Vander Woude Melanie Wiggins	Design Decision – Accessory: 3D Cooking 201 – Baking with Whole Grains Cooking 201 – Loaf Quick Bread Human Development – Health & Physical Development General Foods – Cooking Basics Recipe File

Top Contest

TOP AWARDS & PURPLE RIBBONS

Horticulture Judging Contest – Intermediate Team: Parker Hansen, Kaily Wesely, Maria Polk and Catherine Polk, 1st Place

Samuel Babcock	Horticulture Judging Contest – Senior, 10th Place Insect ID Judging Contest – Senior, 2nd Place
Kylie Hansen Parker Hansen	Tree ID Judging Contest – Senior, 5th Place Horticulture Judging Contest – Intermediate, 9th Place [Blue Ribbon]
Clara Johnson Catherine Polk	Fashion Show – 1 of the Top 5 Exhibits Horticulture Judging Contest – Intermediate, 4th Place Tree ID Judging Contest – Intermediate, 3rd Place Tree ID Judging Contest – Intermediate, 2nd Place
Maria Polk Micah Pracheil Kaily Wesley	Insect ID Judging Contest – Intermediate, 4th Place Horticulture Judging Contest – Intermediate, 3rd Place Tree ID Judging Contest – Intermediate, 5th Place

PURPLE RIBBONS

Clare Bauman Parker Hansen Clara Johnson Piper Pillard Olivia Mays Vanessa Peterson	4-H Fashion Show: Constructed STEAM Clothing 3 Presentations – Illustrated Presentation 4-H Fashion Show: Shopping In Style 4-H Fashion Show: Constructed STEAM Clothing 2 Culinary Challenge - Culinary Challenge - Intermediate Culinary Challenge - Culinary Challenge – Intermediate
--	---

Top Animal

LIVESTOCK ACHIEVEMENT PROGRAM

New this year! At the beginning of the 4-H year, youth plan what to accomplish. At the end of the 4-H year, they report on their completed accomplishments. Members of Excellence were recognized during the 4-H Parade of Champions.

Andrew Frain	Rabbit Project Area, Intermediate Level
--------------	---

TOP AWARDS & PURPLE RIBBONS

Auren Burkey	Sheep: Reserve Champion Division VII: Commercial Meat Breed Ewes AND Reserve Champion Breeding Ewe Sheep: 2nd Place Dorset Market Lambs
--------------	--

Ruby Dean	Dog: Reserve Champion Obedience Beginning Novice Division A Dog: Obedience – 2nd Place Beginning Novice Division A
Kyson Gana	Beef: Champion Simmental Breeding Heifer (Yearling Heifers Calved March/April 2020)
Clara Johnson	Beef: Reserve Champion LimFlex Breeding Heifer (Yearling Heifers Calved Jan./Feb. 2020)
Michael Lockee III	Sheep: Champion Division III: Hampshire Ewes (Breeding Sheep - Hampshire Ewe Lambs)
Zach Pittman	Poultry: Geese – 1st Place: Lt Tufted Roman White Old Female
Kyler Plugge	Beef: Showmanship – Intermediate – 2nd Place Beef: Supreme Reserve Champion Breeding Heifer AND Champion Red Angus Breeding Heifer (Yearling Heifers Calved Jan./Feb. 2020)
Marylynn Rauert Allison Walbrecht	Poultry: Showmanship – 3rd Place Intermediate Beef: Reserve Champion Commercial Breeding Heifer (Heifers Calved Jan./Feb. 2020)

PURPLE RIBBONS

Auren Burkey	Sheep: Market Sheep – Hampshire Market Lambs Sheep: Showmanship – Intermediate
Bella Croghan Khloe Cuttlers	Dog: Agility – Level 1 Meat Goat: Breeding Meat Goat – Registered (AGBA) (Yearling Does born 9/1/19 to 8/31/20)
Ruby Dean Grace Fahleson	Dog: Agility – Level 1 Swine: Showmanship – Senior Swine: Breeding Gilts – Purebred Berkshire
Andrew Frain	Rabbit: Breeding Rabbits – Mini Lop Jr. Buck Rabbit: Breeding Rabbits – Mini Lop Sr. Doe
Kaden Gana	Beef: Angus Breeding Beef (Yearling Heifers Calved August/December 2019)
Brett Heinrich Caraline Higgins Noah Jelinek	Beef: Market Beef – Crossbred Steers Dog: Showmanship – Senior Poultry: Feather Legged Bantams – Langshan, Black Cock Poultry: RCCL Bantams – Wyandotte Black Hen
Clara Johnson	Beef: Market Beef – Crossbred Steers Meat Goat: Showmanship – Senior Meat Goat: Market Meat Goats
Grant Johnson Josie Johnson	Beef: Market Beef – Crossbred Steers Beef: Composite Charolais Breeding Beef (Yearling Heifers Calved March/April 2020)
Luke Johnson Heather Lange	Beef: Market Beef – Market Heifers Sheep: Market Sheep – Crossbred Market Lambs Beef: Market Beef – Crossbred Steers Meat Goat: Meat Goat Showmanship – Senior Meat Goat: Breeding Meat Goat – Commercial Yearling Does (born between 9/1/2019 to 8/31/2020)
Sarah Lange	Meat Goat: Market Meat Goats Poultry: Asiatic – Cochon Black Pullet Poultry: English – Australop Pullet
Michael Lockee III Ian Lorenson	Sheep: Market Sheep – Crossbred Market Lambs Sheep: Market Sheep – Crossbred Market Lambs Sheep: Market Sheep – Natural Color Market Lambs Sheep: Breeding Sheep – Commercial Meat Breed Ewe Lambs
Blake Mueller	Beef: Chianina Breeding Beef (Yearling Heifers Calved March/April 2020) Beef: Mainetainer Breeding Beef (Yearling Heifers Calved March/April 2020)
TJ Mueller	Beef: Angus Breeding Beef (Yearling Heifers Calved March/April 2020)
Zach Pittman	Poultry: Egg Production Trio Poultry: Feather Legged Bantams – Belg Beard d'Uccle, Mille Fleur Cockerel Poultry: Geese – Lt Tufted Roman White Old Male
Marylynn Rauert	Rabbit: Breeding Rabbits – Mini Rex Sr. Buck Rabbit: Rabbit Showmanship – Intermediate
Paige Schepers Allison Schlif Olivia Vanderford Ellie Volk	Dog: Rally – Beginning Rally Dog: Showmanship – Senior Swine: Breeding Gilt – Purebred Spotted Swine: Breeding Gilt – Crossbred Swine: Breeding Gilt – Purebred Yorkshire
Allison Walbrecht	Beef: Foundation Simmental Breeding Beef (Yearling Heifers Calved Jan./Feb. 2020)



Horticulture Judging Contest Intermediate Team earned 1st place (one youth not pictured)



Livestock Achievement Program Member of Excellence in rabbit project area



Beef Champion Red Angus Breeding Heifer and Supreme Reserve Champion Breeding Heifer



Several members of the 4 on the Floor 4-H dog club earned purple ribbons

EXTENSION NEWS

Three New Extension Staff

Nebraska Extension in Lancaster County recently hired three staff members who will help support Extension's local programs.

Emily Kern began working as a county Clerk Typist II in July. Emily will support the 4-H youth development program and assist in receptionist duties. In August, she earned her master's degree in English Literature from the University of Nebraska–Omaha (UNO). She has a bachelor's degree in Creative

Writing with a concentration in fiction, also from UNO.

Irvin Ramirez-Benavides joined the Lancaster County Nutrition Education Program (NEP) team in July. He will focus on teaching nutrition and physical activity to middle and high school youth attending Title I schools. Irvin grew up in both Mexico and Grand Island, Nebraska. He received his bachelor's degree in December from the University of Nebraska–Lincoln (UNL) in Community Health and Wellness.

Victoria Reis joined the Lancaster County NEP team in August, where her focus will be increasing health and wellness of the adult Latino community, as well as teaching English Language Learner audiences. Since last October, Victoria worked part-time for the statewide Nutrition Education Program where she translated recipes, website content and social media posts into Spanish, in addition to teaching online classes for Latino participants. Victoria is originally from Brazil and received her bachelor's degree in nutrition science at Universidade Federal de Viçosa in Brazil and her master's degree in nutrition and health sciences from UNL in August 2020.



(L–R) Emily Kern, Irvin Ramirez-Benavides and Victoria Reis

2021 UNL Service Awards

Recently, University of Nebraska–Lincoln staff reaching an anniversary year of employment were honored for their years of service to the university. The following Nebraska Extension in Lancaster County staff were recognized:

- **Sarah Browning**, Extension Educator — 20 years
- **Kayla Colgrove**, Extension Educator — 10 years
- **Konnie Robertson**, NEP Support Staff — 10 years



EXTENSION CALENDAR

All events will be held at the Lancaster Extension Education Center, 444 Cherrycreek Road, Lincoln, unless otherwise noted.

September

- 27 GROBigRed VIRTUAL Learning — Vegetable Gardening Beyond Basics: Uncommon & Culturally Significant Crops 12:10–12:50 p.m.
- 30 4-H Council's Alumni Scholarship Deadline
- 30 4-H Horse Awards Night 6:30 p.m.

October

- 3 4-H Council Golf Tournament Fundraiser, Woodland Hills Golf Course, Eagle 1 p.m.
- 3–9 National 4-H Week
- 5 4-H Information Night 6 p.m.
- 7 Pesticide Applicator Nebraska Department of Agriculture Walk-In Testing Session 9 a.m.–2 p.m.
- 8 Extension Board Meeting 8 a.m.
- 9 State 4-H Rodeo, Lancaster Event Center – Pavilion 3 9 a.m.
- 10 4-H Teen Council Meeting 3 p.m.
- 11 GROBigRed VIRTUAL Learning — Vegetable Gardening Beyond Basics: From Backyard Garden to Market Garden 12:10–12:50 p.m.
- 16 Composting Demonstration, Willard Community Center, 1245 S. Folsom St. 10–11 a.m.
- 21 4-H Leader Trainings 9 a.m. & 6:30 p.m.
- 23 Composting Demonstration, Pioneers Park Nature Center's backyard composting demonstration area 10–11 a.m.

Deadline For Extension Board Applications, Nov. 1

The Lancaster County Board of Commissioners seek community members to serve on the Lancaster County Extension Board. Vacancies will be filled with three-year appointments beginning in January 2022. Extension Board members advocate for and assist Extension staff in focus areas such as: 4-H youth development; beef systems; community environment; cropping & water systems; food, nutrition & health; and early childhood. The board meets monthly (usually the second Friday of the month at 8 a.m.).

Registered Lancaster County voters interested in serving, should complete an Extension Board application by Nov. 1. Additional information and an application can be obtained from: Nebraska Extension in Lancaster County, 444 Cherrycreek Road, Suite A, Lincoln, NE 68528 or by calling 402-441-7180. Applications are also online at <https://lancaster.unl.edu/extensionboard>.

Nebraska Extension in Lancaster County

444 Cherrycreek Road, Ste. A, Lincoln, NE 68528 • 402-441-7180

Extension is a Division of the Institute of Agriculture and Natural Resources at the University of Nebraska–Lincoln cooperating with the Counties and the United States Department of Agriculture.

Nebraska Extension educational programs abide with the nondiscrimination policies of the University of Nebraska–Lincoln and the United States Department of Agriculture.

NEBLINE

NEBLINE is typically published monthly (except December).

Subscriptions via mail are free to Lancaster County residents.

There is an annual \$5 mailing and handling fee to addresses in zip codes other than 683–, 684–, 685–, 68003, 68017 and 68065.

Would You Prefer Digital?

E-newsletter and PDF versions are at lancaster.unl.edu/nebline

Subscribe to Digital or Print Versions

Subscribe/unsubscribe to the print and/or digital versions by going to lancaster.unl.edu/nebline or by calling 402-441-7180.