

University of Nebraska - Lincoln

DigitalCommons@University of Nebraska - Lincoln

Papers in Natural Resources

Natural Resources, School of

2017

Detecting spatial regimes in ecosystems

Shana M. Sundstrom

University of Nebraska-Lincoln, sundstrom.shana@gmail.com

Tarsha Eason

U.S. Environmental Protection Agency

R. John Nelson

University of Victoria

David G. Angeler

Swedish University of Agricultural Sciences, david.angeler@slu.se

Chris Barichiev

Zoological Society of London

See next page for additional authors

Follow this and additional works at: <https://digitalcommons.unl.edu/natrespapers>



Part of the [Natural Resources and Conservation Commons](#), [Natural Resources Management and Policy Commons](#), and the [Other Environmental Sciences Commons](#)

Sundstrom, Shana M.; Eason, Tarsha; Nelson, R. John; Angeler, David G.; Barichiev, Chris; Garmestani, Ahjond S.; Graham, Nicholas A.J.; Granholm, Dean; Gunderson, Lance; Knutson, Melinda; Nash, Kirsty L.; Spanbauer, Trisha L.; Stow, Craig A.; and Allen, Craig R., "Detecting spatial regimes in ecosystems" (2017). *Papers in Natural Resources*. 597.

<https://digitalcommons.unl.edu/natrespapers/597>

This Article is brought to you for free and open access by the Natural Resources, School of at DigitalCommons@University of Nebraska - Lincoln. It has been accepted for inclusion in Papers in Natural Resources by an authorized administrator of DigitalCommons@University of Nebraska - Lincoln.

Authors

Shana M. Sundstrom, Tarsha Eason, R. John Nelson, David G. Angeler, Chris Barichievy, Ahjond S. Garmestani, Nicholas A.J. Graham, Dean Granholm, Lance Gunderson, Melinda Knutson, Kirsty L. Nash, Trisha L. Spanbauer, Craig A. Stow, and Craig R. Allen

IDEA AND PERSPECTIVE

Detecting spatial regimes in ecosystems

Shana M. Sundstrom,^{1*}
Tarsha Eason,² R. John Nelson,³
David G. Angeler,⁴
Chris Barichiev,⁵
Ahjond S. Garmestani,²
Nicholas A.J. Graham,⁶ Dean
Granholm,⁷ Lance Gunderson,⁸
Melinda Knutson,⁹
Kirsty L. Nash,¹⁰
Trisha Spanbauer,¹¹
Craig A. Stow¹² and
Craig R. Allen¹³

Abstract

Research on early warning indicators has generally focused on assessing temporal transitions with limited application of these methods to detecting spatial regimes. Traditional spatial boundary detection procedures that result in ecoregion maps are typically based on ecological potential (i.e. potential vegetation), and often fail to account for ongoing changes due to stressors such as land use change and climate change and their effects on plant and animal communities. We use Fisher information, an information theory-based method, on both terrestrial and aquatic animal data (U.S. Breeding Bird Survey and marine zooplankton) to identify ecological boundaries, and compare our results to traditional early warning indicators, conventional ecoregion maps and multivariate analyses such as nMDS and cluster analysis. We successfully detected spatial regimes and transitions in both terrestrial and aquatic systems using Fisher information. Furthermore, Fisher information provided explicit spatial information about community change that is absent from other multivariate approaches. Our results suggest that defining spatial regimes based on animal communities may better reflect ecological reality than do traditional ecoregion maps, especially in our current era of rapid and unpredictable ecological change.

Keywords

Boundary detection, community change, Fisher information, regime shifts, spatial regimes, spatial resilience.

Ecology Letters (2017) 20: 19–32

INTRODUCTION

The possibility of multiple regimes for ecosystems is now well documented, and methods to detect temporal regime shifts have received a great deal of attention (Scheffer & Carpenter 2003; Dakos *et al.* 2008; Guttal & Jayaprakash 2008). Less well developed is the application of these tools to the identification of spatial regimes that reflect the boundary between two types of ecosystems (though see Kéfi *et al.* 2014). Spatial data have unique challenges in that while it is not necessary for data points to be equally spaced (Dai *et al.* 2013; Cline *et al.* 2014), sufficient spatial sampling resolution is needed to distinguish one spatial regime from another. The identification of spatial regimes is increasingly important due to habitat fragmentation, which increases the proportion of boundaries in landscapes (Kent *et al.* 2006), and anthropogenic climate change, which is expected to shift ecological boundaries.

Studies have already shown rapid altitudinal shifts in montane ecological boundaries in response to climate change (Allen & Breshears 1998; Beckage *et al.* 2008). Similarly, climate-driven boundary shifts are being detected in marine systems as both spatial shifts in primary production and in individual species ranges, as well as in phenological shifts and changes in community composition (Beaugrand *et al.* 2002; Edwards & Richardson 2004; Grebmeier *et al.* 2006). Because ecological boundaries in terrestrial systems typically demarcate the distribution of vegetation and ecosystem type, they provide critical information about the extent and rate of the biological processes shaping the boundary and driving the maintenance of the regime within the boundary (Yarrow & Salthe 2008). This has implications for both environmental management and biological conservation (Kent *et al.* 2006).

Boundary identification has been an active area of research in terrestrial ecology and biogeography, and is

¹School of Natural Resources, University of Nebraska-Lincoln, 103 Hardin Hall, 3310 Holdrege St., NE 68583, USA

²U.S. Environmental Protection Agency, National Risk Management Research Laboratory, Cincinnati, OH 45268, USA

³Department of Biology-Centre for Biomedical Research, University of Victoria, Victoria, BC V8P 5C2, Canada

⁴Department of Aquatic Sciences and Assessment, Swedish University of Agricultural Sciences, Box 7050, SE-750 07 Uppsala, Sweden

⁵Zoological Society of London, Regents Park, London NW1 4RY, UK

⁶Lancaster Environment Centre, Lancaster University, Lancaster LA1 4YQ, UK

⁷U.S. Fish & Wildlife Service, Bloomington, MN 55437-1003, USA

⁸Department of Environmental Sciences, Emory University, Atlanta, Georgia 30322, USA

⁹Region 3 U.S. Fish & Wildlife Service, La Crosse, WI 54603, USA

¹⁰Centre for Marine Socioecology, Institute for Marine and Antarctic Studies, University of Tasmania, Hobart, TAS 7000, Australia

¹¹National Research Council, U.S. Environmental Protection Agency, Cincinnati, Ohio 45268, USA

¹²National Oceanographic and Atmospheric Administration Great Lakes Environmental Research Laboratory, Ann Arbor, MI 48108, USA

¹³U.S. Geological Survey - Nebraska Cooperative Fish & Wildlife Research Unit, University of Nebraska, Lincoln, NE 68583, USA

*Correspondence: E-mail: sundstrom.shana@gmail.com

generally both data intensive and statistically challenging, particularly when it involves vegetation sampling (Kent *et al.* 2006). The use of remotely sensed data is less laborious than field work, but the method is poor at distinguishing between physically similar but floristically different vegetation; hence, it may require labour-intensive ground-truthing to verify ecological transitions in plant assemblages (Kent *et al.* 2006). Boundary detection is further complicated by the multiplicity of scales at which different processes and physical patterns are expressed (Fagan *et al.* 2003; Strayer *et al.* 2003), and that the relationship between abiotic variables such as climate, and biotic variables such as vegetation, is often nonlinear across boundaries (Danz *et al.* 2012). Typically, terrestrial ecological boundaries defined for ecoregion maps such as those used by U.S. federal agencies are based on potential plant communities, which in turn reflect differences in bedrock, soil, altitude, temperature, and moisture (Bailey 1983; Omernik 1987). Terrestrial plant communities may not respond as rapidly as animal communities to direct anthropogenic change and climate change (Pearson 2006; Pearman *et al.* 2008), therefore defining the boundaries between animal communities may better represent current biotic and abiotic conditions. Variation in animal population dynamics provides information on the stability of ecosystem mechanisms, processes, and linkages, and may serve as an early warning signal of shifting regimes (Cline *et al.* 2014).

Pelagic marine ecological boundaries are typically defined by primary production characteristics (Longhurst 1998) which reflect aquatic properties such as currents, temperature, salinity, nutrients, and bathymetry, but are complicated by the ephemeral nature of features such as oceanographic fronts. Landforms, such as straights, may create another form of boundary between biological communities. Advection across fronts or through physical constrictions between water masses can serve as a driver of both physical and ecological homogeneity, though the degree of connectivity can vary rapidly in space and time (Wassmann *et al.* 2015). There is much current discussion of appropriate variables by which to track marine ecological change (Rice & Rochet 2005; Samhuri *et al.* 2009; Rombouts *et al.* 2013). *A priori*, it is difficult to know which individual taxa or processes represent a spatial regime and thus ecological boundaries. Because of the central role played by zooplankton as a prey item and a grazer, zooplankton data have commonly been used (Hooff & Peterson 2006; Pace *et al.* 2013), although Scheffer *et al.* (2003) warn that zooplankton community composition and abundance may be too chaotic to be useful for regime shift prediction except at very high level aggregate states.

Ideally, a monitoring programme should be able to forecast far-reaching change such as a regime shift. However, too often monitoring focuses on particular species of interest, effectively barring community-level or ecosystem-level analyses. We use spatially explicit avian and zooplankton community species composition data to test for the identification and location of spatial regimes using Fisher information, an information theory method with no strict data requirements that is a powerful tool for understanding system-level change within a location, or over space.

Regime shifts and Fisher information

There is widespread acceptance in the scientific community that some ecosystems exhibit multiple regimes, and that the transition between regimes can be abrupt and discontinuous (though see Hastings & Wysham 2010; Fukami & Nakajima 2011). Statistical indicators of regime shifts that can act as an early warning signal are thought to represent generic properties that behave in similar and predictable ways across system types (Dakos *et al.* 2011), and are proposed to have the added advantage that detailed mechanistic knowledge is not necessary for their use. The indicators include critical slowing down, which can manifest as slower recovery rates from perturbation, increased autocorrelation and increased variance (Scheffer *et al.* 2009); changing skewness (Guttal & Jayaprakash 2008); conditional heteroscedasticity (Seekell *et al.* 2011), and the variance index (Brock & Carpenter 2006).

These indicators have transformed our ability to identify variables that change in response to exogenous or endogenous drivers and signal an impending regime shift. However, much remains uncertain. For example, although the various indicators have been tested on model systems and historical data sets with known temporal regime shifts (Lindgren *et al.* 2012), their performance is not consistent (Seekell *et al.* 2011; Perretti & Munch 2012; Batt *et al.* 2013; Dakos *et al.* 2013) and their ability to predict future regime shifts is unknown (Boulton *et al.* 2014). Some methods, such as conditional heteroscedasticity, require large, high-resolution samples (Seekell *et al.* 2011) and their applicability to complex systems with multivariate data is questionable because most studies have been conducted using either simulated data or very simple systems (Scheffer *et al.* 2009; Drake & Griffen 2010; Dai *et al.* 2012; Dakos *et al.* 2012). When models have incorporated realistic levels of ecological noise, the indicators tend to perform poorly (Perretti & Munch 2012). A difficulty in developing early warning indicators is that the critical variables driving system transitions are typically unknown. Brock & Carpenter (2012) cite this lack of knowledge as a 'fundamental problem' in leading indicators research.

Researchers have urged that multiple ecosystem variables should be evaluated when interpreting indicators for real systems (Carpenter *et al.* 2009; Lindgren *et al.* 2012). For example Litzow *et al.* (2013) found that when analysing rising variance in catch data from fisheries, trends in individual fisheries largely failed to be statistically significant, whereas pooling multiple populations increased their ability to detect a collapse. The variance index (VI) was developed to capture dominant variance trends in multivariate systems (Brock & Carpenter 2006). VI should spike prior to a transition, but results from this index are sometimes unclear (Eason *et al.* 2014).

Fisher information may address some of the issues listed above. Fisher information is an information theory approach (Fisher 1922) that captures patterns in system dynamics as evidenced by the trends in variables that characterise the system's condition. The approach collapses the behaviour of multiple variables into an index that can be used to track changes in dynamic order, including regimes and regime shifts. Historical applications of information theory-based

approaches include assessing ecosystem functioning, stability, complexity, and diversity (Anand & Orloci 2000; Sviridov 2000; Fath & Cabezas 2004; Patricio *et al.* 2004). More recently, Fisher information has been employed for sustainable environmental management at various spatial scales (Karunanithi *et al.* 2011; Eason & Garmestani 2012) and to examine temporal patterns in both terrestrial (Mayer *et al.* 2007; Eason & Cabezas 2012) and aquatic systems (Mantua 2004; Spanbauer *et al.* 2014; Eason *et al.* 2016).

While other methods like time series analysis requires a sufficient resolution of data to separate noise from a genuine signal of an impending regime shift, the data requirements for Fisher information are more lenient. A strength of Fisher information is that it can readily incorporate a wide variety of data types and variables and has been used to identify regime changes in various types of systems with data resolutions from relatively small and moderate (Eason & Cabezas 2012) to quite large (Spanbauer *et al.* 2014). Furthermore, there is no minimum or maximum number of variables needed to compute the index. When assessing a complex system characterised by multiple variables, methods like Spearman rank order correlation have been used in conjunction with Fisher information to determine which variables or groups of variables are critical for shaping the Fisher information signal (Eason & Cabezas 2012). Accordingly, one of the key limitations of traditional statistical indicators is avoided because there is no need to make assumptions about which variables best act as indicators of an impending regime shift, particularly when much is uncertain and our knowledge is limited.

Purpose

Our goal is to identify spatial regimes in avian and zooplankton community data using Fisher information, and compare the extent to which Fisher-identified regime boundaries are coincident with our *a priori* understanding of where these ecological boundaries exist, as per classification systems such as Bailey's (1983) and Omernik's (1987) for terrestrial systems, and marine domain descriptions found in Carmack *et al.* (2010) and Archambault *et al.* (2010). The terrestrial ecoregion maps rely heavily on *potential* natural vegetation based on underlying geological and climatic variables, so significant discrepancies between actual land use, actual vegetative cover and potential vegetation can exist, and should be reflected in the composition of the animal community. Boundaries in marine systems are not as spatially constrained as in terrestrial systems and the key habitat determinants of species' distributions and community structure are not as easily defined. It is important to note that we are not trying to identify regime shifts that represent a critical transition (e.g. Scheffer 2009), but rather the geospatial point or region at which one ecosystem type transitions into another.

Although Fisher information is suited to multivariate data encompassing a wide range of biotic and abiotic data that characterise any given regime, we used a single taxon data set from each system (birds and zooplankton). Limiting the data in this way had the benefit of making this a conservative test of the performance of Fisher information that reflects the data readily available to others working on similar problems. We compared

the Fisher information results with a range of early warning indicators (critical slowing down, captured by the lag-1 autocorrelation coefficient; variance; kurtosis; skewness; and the variance index), and multivariate methods commonly employed by community ecologists (nMDS (Oksanen 2013), and cluster analysis).

METHODS

Terrestrial data

We used USGS Breeding Bird Survey data (BBS) from 30 survey routes along a *c.* 1900 km transect. Each BBS route is 41 km long and has 50 stop points located at 800 m intervals; at each stop point, a 3-min point count of sighted and heard birds is recorded, and data from each stop point are totalled for the route (Sauer *et al.* 2014). The routes begin in the Rocky Mountains, move due east through the central prairie region, and then veer north into Minnesota, terminating at the western border of Lake Superior (Fig. 1a). The species abundance data are a snapshot of the 2007 bird community at each route location. The routes are located in 5 Omernik Level III ecoregions (Omernik 1987), but were selected such that there were roughly an equal number of routes in four gross ecosystem types: 8 routes from the Southern Rockies (montane forest), 7 from the High Plains (grassland), 3 from the Central Great Plains and 4 from the Western Cornbelt Plains (total of 7 routes from grassland-agriculture matrix) and 8 from the Northern Lakes and Forest ecoregion (northern forest-wetland matrix). The unequal number of routes among ecosystems was due to data availability; not all routes are covered in all years, as route coverage relies on volunteers. Although we used the Omernik ecoregions as an underlying map layer when selecting routes, there are multiple ecoregion maps used by U.S. land agencies, with sometimes substantial differences between them. None are 'right' per se, but all are best approximations of potential vegetation based on areas with similar geology, physiography, vegetation, climate, soils, land use, wildlife, water quality, and hydrology (United States Department of the Interior). We downloaded the complete species abundance list for each route (Sauer *et al.* 2014) and used it to create a route-species abundance matrix, where abundance is the number of individual birds for each species at each route, with values ranging from 0 to 293.

Sampling biases are an issue with BBS data, resulting primarily from under detection of wary, rare, and aquatic species, as well as differences between observers. However, those biases are present across all routes and should not impact the very coarse pattern extracted from the absence/abundance data. Remotely sensed data for land cover type are also available for a 400 m buffer around each route (Sauer *et al.* 2014). The land cover data provide a sense of the heterogeneity of the habitat type for each ecoregion. We averaged the percent of each land cover type across all routes for each of the five Omernik ecoregions.

Marine data

Zooplankton community surveys were conducted in 2008, and samples analysed under the auspices of the International Polar

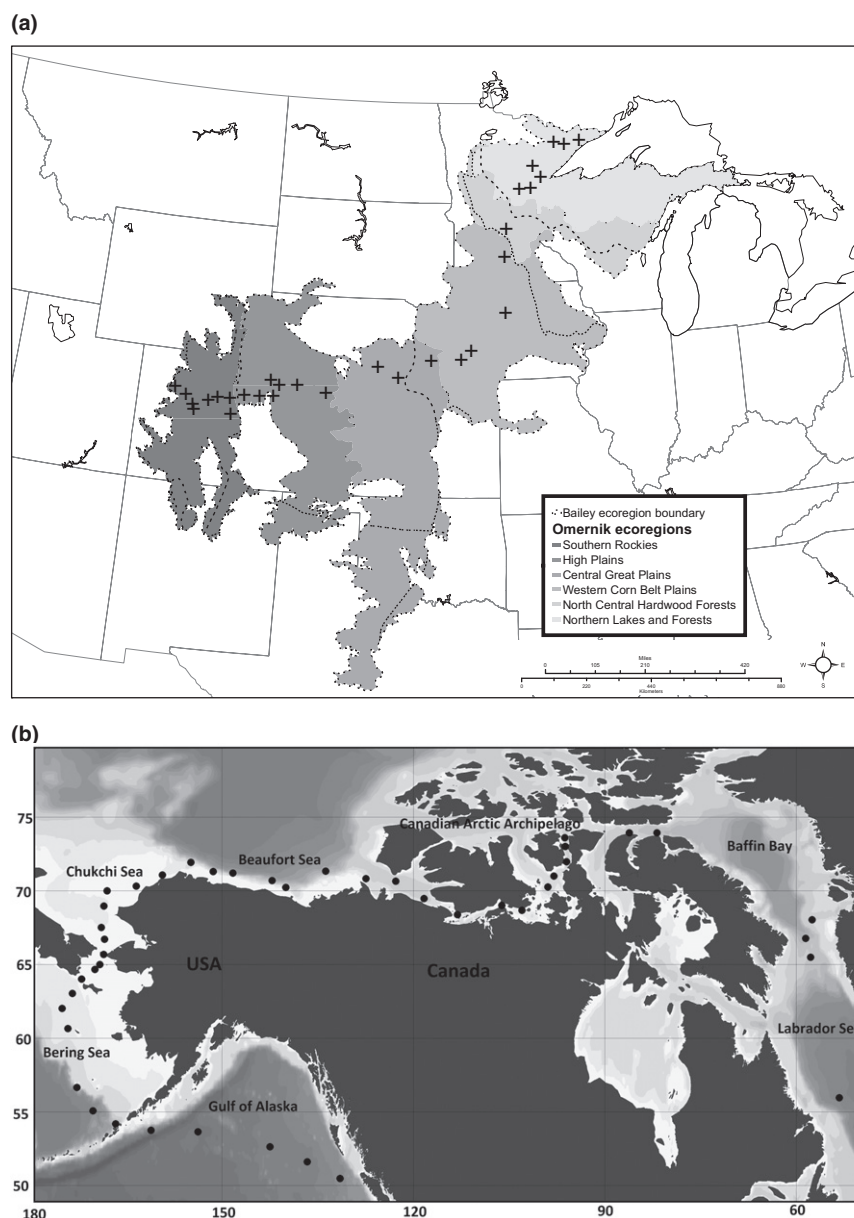


Figure 1 (a) The USGS Breeding Bird Survey route locations in the central and northern United States. The Omernik Level III ecoregion boundaries are coloured in greyscale, whereas the Bailey Level III ecoregion boundaries are shown using dotted lines. (b) Zooplankton data collection locations.

Year programme, Canada's Three Oceans project (Carmack *et al.* 2008). The survey traverses 12 000 km from coastal British Columbia just north of Vancouver Island to the Labrador Sea on the eastern side of Canada, crossing through 6 oceanic domains: the Gulf of Alaska, the Bering Sea, the Chukchi Sea, the Beaufort Sea Shelf, and the Canadian Arctic Archipelago, and terminates in the Davis Strait/Labrador Sea (Fig. 1b). Although these oceanic domains share some zooplankton species, they are known to be distinct from each other to varying degrees (Archambault *et al.* 2010; Pomerleau *et al.* 2011, 2014). There were 44 sampling locations irregularly spaced along the transect.

Mixed zooplankton samples were collected from August to September by vertical net hauls with a 236 micron net (typically to 100 m or 7 m above the bottom), and were preserved

in 95% ethanol and 10% buffered formalin. The zooplankton samples were keyed out to the lowest possible taxonomic unit and enumerated and 4th root transformed, as is standard for marine zooplankton data. When possible, the developmental stages of each taxa were counted separately. A site-taxa abundance matrix was created. Sites were ordered from western-most to eastern-most station.

Statistical methods

Fisher information was developed by Fisher (1922) as a measure of the amount of information about a particular parameter (or system characteristic) that can be obtained by observation. The form of Fisher information used in this work is based on the probability of observing various

conditions ($p(s)$) of the system (Fath *et al.* 2003; Mayer *et al.* 2007).

$$I = \int \frac{ds}{p(s)} \left[\frac{dp(s)}{ds} \right]^2 \quad (1)$$

This is appropriate for our study because we are interested in determining patterns of change in the condition (or state: s) of a system. From this equation, note that Fisher information is proportional to the change in the probability of observing a system state ($dp(s)$) over the change in state ds (i.e. $I \propto \frac{dp(s)}{ds}$). The significance of this proportionality may be examined using two cases. The first example is a system in which the overall condition does not change from one observation to the next. While such a system may fluctuate within a basin of attraction, it is considered stable because the overall conditions are predictable and the patterns are evident; accordingly, the probability of observing a particular state of the system is high and Fisher information tends towards infinity. The exact opposite is true of a system that is constantly changing. In this case, the system displays no bias towards a particular condition and there are no distinct patterns useful for characterising the way the system behaves; hence, there is equal probability of the system functioning in any state and Fisher information is zero (Pawlowski & Cabezas 2008).

Karunanithi *et al.* (2008) adapted eqn 1 to handle empirical data from real systems. Through a series of derivation steps, Fisher information (henceforth denoted as FI) is numerically estimated as:

$$FI = 4 \sum_{s=1}^n [q_s - q_{s+1}]^2 \quad (2)$$

where $p(s)$ is replaced by its amplitude ($q^2(s) \equiv p(s)$) to reduce calculation errors from very small $p(s)$. Further details on the derivation and calculation may be found in (Mayer *et al.* 2007; Karunanithi *et al.* 2008; Cabezas & Eason 2010).

Fisher information has traditionally been used to explore temporal patterns; however, the method can be applied to examine spatial dynamics. The core of the FI approach is to assess patterns in data based on tracking systematic changes in line with some ordering principle such that trends are evaluated over a series of points (e.g. point a, point b, etc.). This sequence may be defined temporally or spatially. The key distinction is that rather than using time as the basis for assessing changes, spatial location is the ordering principle. The basic algorithm for computing FI is as follows: (1) select variables (e.g. x_i , $i = 1:n$ variables) that characterise the condition of the system (in this case various animal species) and gather data (i.e. species abundance) from each sampling location (l_j) across the route: ($x_i(l_j)$), $j = 1:m$ sampling locations), such that the abundance of each species at each site defines one point (e.g. $pt_1(l_1) : [x_1(l_1), x_2(l_1), x_3(l_1), \dots, x_n(l_1)]$); (2) assemble the data into a $m \times n$ matrix and divide it into a sequence of overlapping windows that advances one route location per iteration; (3) determine the measurement uncertainty for each variable (UX_i) and use this to define a boundary (tolerance) around each system state. If the measurement uncertainty is unknown then the variation in a stable portion of data may be used as a proxy. This boundary (size of states) defines how much a measurement can vary within a particular state; (4)

Use the size of states to determine which points are similar (dimensions stay within the boundary defining a minimum range of variation) and group (bin) similar points together into discrete states; (5) Compute $p(s)$ by counting the number of points binned in each state and dividing this value by the total number of points in the window; (6) compute $q(s)$ and calculate FI using eqn 2. This process is repeated for each window. Based on empirical assessments, a $hwin \geq 8$ was suggested (Cabezas & Eason 2010), however, it is generally set based on the amount of data available. Increasing the $hwin$ tends to decrease the magnitude of the FI result and number of FI points, but the basic trends remain intact (Cabezas & Eason 2010).

Different system regimes are controlled by fundamentally distinct processes and exhibit unique patterns. Tracking FI affords the ability to assess changes in these patterns. Regimes are identified as periods over time or across space in which FI is non-zero and the values are relatively stable (i.e. $dFI/dl \approx 0$). While steadily increasing FI indicates rising dynamic order, less change and possible movement to more consistent patterns, declining FI signifies unstable dynamics, loss of resilience and may provide warning of an impending shift (Eason *et al.* 2014). Although FI typically declines prior to a regime shift (Mayer *et al.* 2007; Eason & Cabezas 2012; Eason *et al.* 2014), researchers examined model dynamics to study the behaviour of FI in the neighbourhood of a tipping point and found that the behaviour of FI depends heavily on the trends in the variables as the system approaches a shift (Eason *et al.* 2014; Gonzalez-Mejia *et al.* 2015). It is therefore possible for FI to increase as a system transitions from one regime to another. Such a result is in line with Seekell *et al.* (2011, 2012), who found both increasing and decreasing trends in early warning indicators prior to a shift.

Once a shift has been identified, the underlying variables can be explored to determine (or compare) the condition of the system in its new state (Eason & Garmestani 2012). Although higher FI values are generally associated with a greater degree of dynamic order, the level of dynamic order is not as important as the ability of the system to remain stable within a desirable regime. When interpreting FI, a regime is denoted by a relatively stable FI trend (i.e. $dFI/dl \approx 0$) with a high mean ($\uparrow \mu FI$) and low standard deviation in FI ($\downarrow \sigma FI$) or low coefficient of variation in FI ($\downarrow cvFI = \frac{\sigma FI}{\mu FI}$) (Gonzalez-Mejia 2011; Eason & Garmestani 2012). Transitions are identified as periods outside of stable regimes characterised by relatively high σFI and $cvFI$.

The traditional temporal early warning indicators (variance, skewness, and kurtosis) were computed using standard functions. The spatial variants (Moran's I spatial autocorrelation and spatial variance and skewness) were not used because the sequential one-dimensional ordering of the sampling stations lent itself to a space-for-time substitution. Since critical slowing down can be understood as increases in short-term autocorrelation, the lag-1 autocorrelation coefficient was used as an estimate (Dakos *et al.* 2008). The VI was computed as the maximum eigenvalue of the covariance matrix from the data set (Brock & Carpenter 2006). Note that the VI and traditional indicators are expected to spike or increase prior to a regime shift, whereas FI tends to

decline (Eason *et al.* 2014). Fisher information and the traditional indicators were computed in MATLAB (v. 2014b) using a five station moving window that advanced one station at a time, where a station was either a BBS route or a plankton sampling site. A window size of five ensured that there were FI results for each ecoregion for both studies; using smaller or larger windows resulted in similar trends in the FI results, similar to other studies (Cabezas & Eason 2010). Multivariate analyses were conducted using metaMDS and ordcluster from package 'vegan' (R Development Core Team 2013). The distance matrices for the nMDS were created using Bray–Curtis, and multiple dimensions were plotted in a scree diagram to find the lowest dimensionality with an adequate ordination fit as expressed by a stress value [< 0.2 , (Clarke 1993)]. The mean, standard deviation and the coefficient of variation (CV) in FI were calculated for each regime to explore regime stability.

RESULTS

Terrestrial data

Fisher information detected four regimes and two transition zones which are roughly congruent with *a priori* expectations based on ecoregion maps, but diverge in significant ways (Fig. 2). The total drop in FI between the high point in regime 1 and the low point in transition 1 is greater than that between regime 2 and regime 3 (Δ FI of 2.05 and 0.98 respectively), suggesting that the difference in FI between the Southern Rocky Mountains and the 3 Plains ecoregions is greater than the difference among the Plains regions, which is to be expected. Likewise, the total drop in FI between regime 3 (all

Plains routes) and regime 4 (Northern Lakes and Forest) is the largest of all (Δ FI of 2.51), indicating that the greatest variation in bird community structure exists between these two regimes.

The declining trend in FI from west to east means avian community structure is losing order, which aligns with the reality of increasing intensive agricultural land use. FI classified the community structure in the first High Plains route as being similar enough to the eastern Southern Rocky Mountains to include it in the first regime. There followed a steady loss of order, as reflected in the FI value, across the western High Plains. When FI did stabilise, indicating a new regime, that regime captured routes from both the eastern High Plains and western Central Plains ecoregions, indicating a blurring of the distinction between the two Plains ecoregions in terms of vegetative cover and avian community structure. Similarly, the third regime incorporates routes from the eastern Central Plains and most of the Western Cornbelt Plains ecoregions, indicating that avian community structure did not significantly differ between the two Plains ecoregions. This is not an unexpected result, given that those two ecoregions are, in reality, a grassland-agriculture matrix.

The traditional indicators did not provide clear results and yielded graphs with no interpretable pattern (Fig. 3), however, the VI provided results that were complementary to FI (Fig. 2). The VI peaks in several places which are congruent with regime shifts identified by FI (routes 10, 18 and 21). In general, the VI provides complementary information that supports the trend captured by FI, but is significantly more difficult to interpret when evaluated alone because it is not possible to ascertain whether a peak marks the beginning or end of a stable regime or of a transition zone.

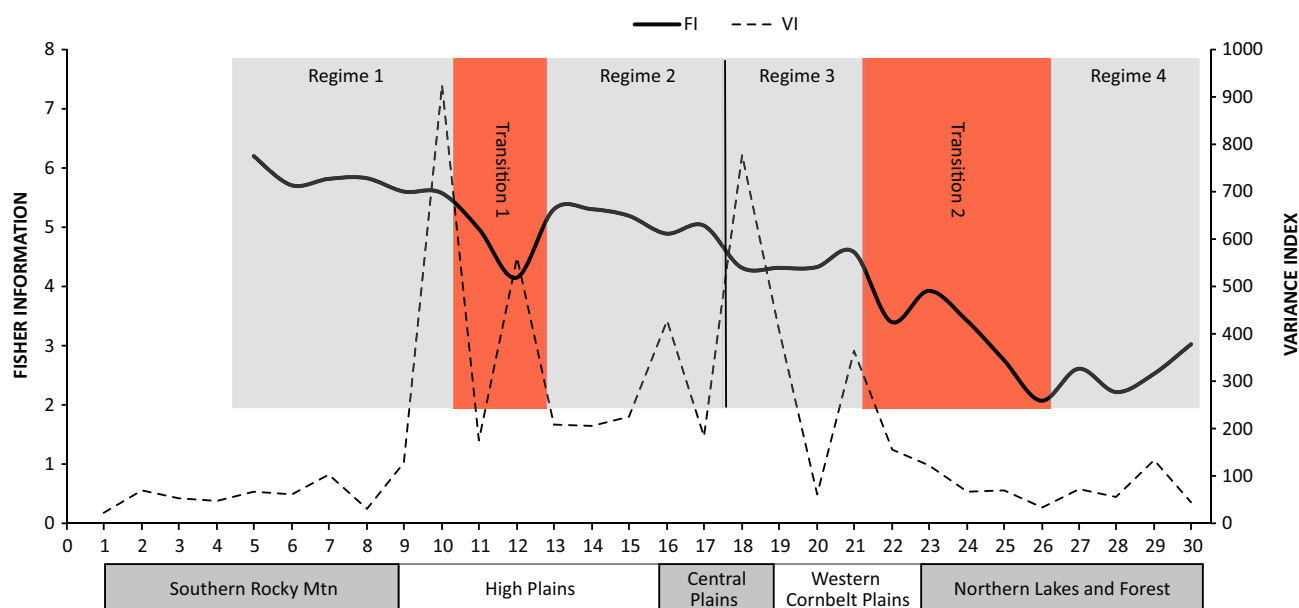


Figure 2 Fisher information [(FI; bold solid line)] and Variance Index (VI; faint dotted line) for Breeding Bird Survey community data from 30 routes (numbered from 1 to 30 on the x-axis, reflecting the west to east ordering of the routes in geographical space). Regimes identified by FI are shown as shaded boxes around the plotted line. The Omernik ecoregion domains under the x-axis allow comparison as to how well the regimes align with the ecoregions, which represent potential rather than actual vegetation. Because one FI value is produced per window, the first FI value is at route 5.

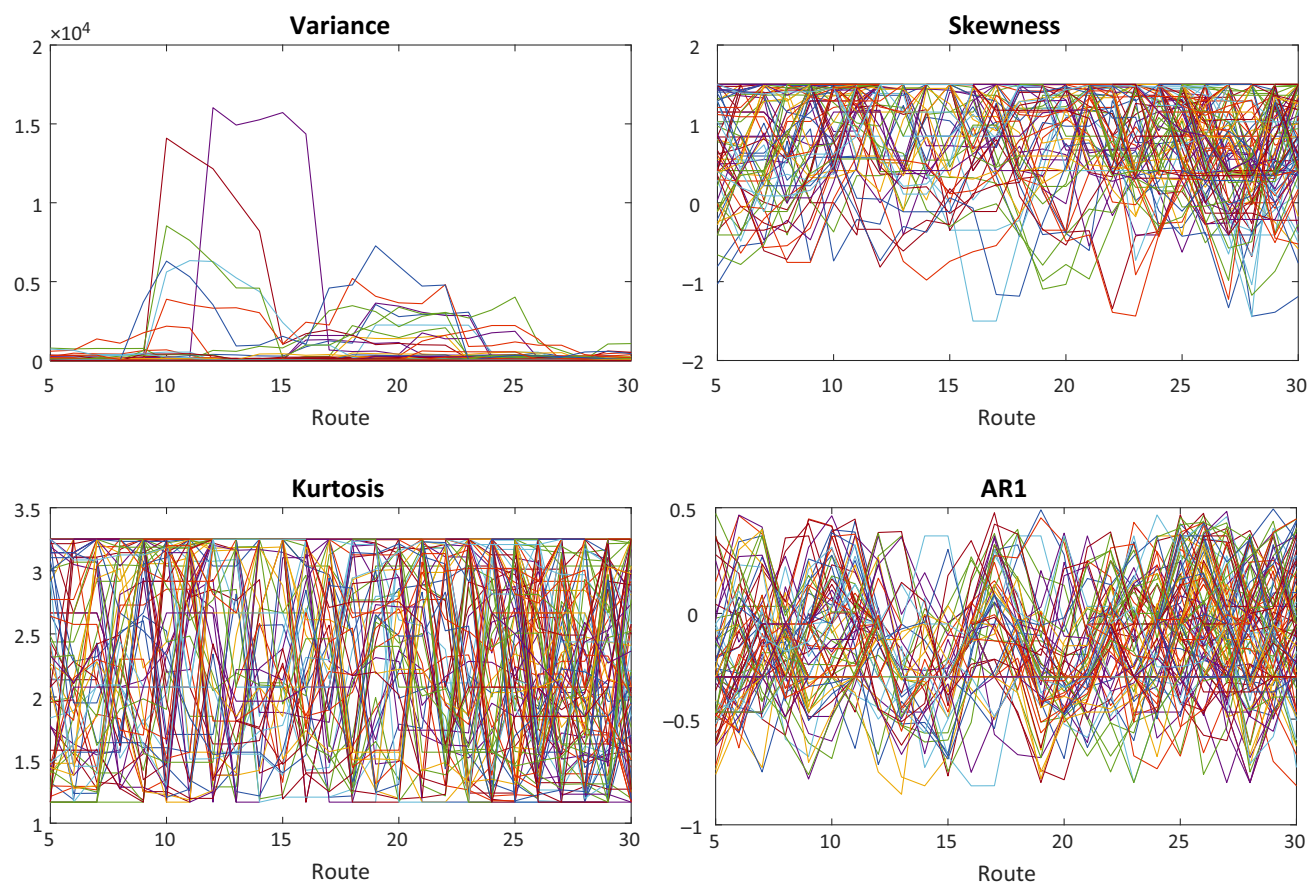
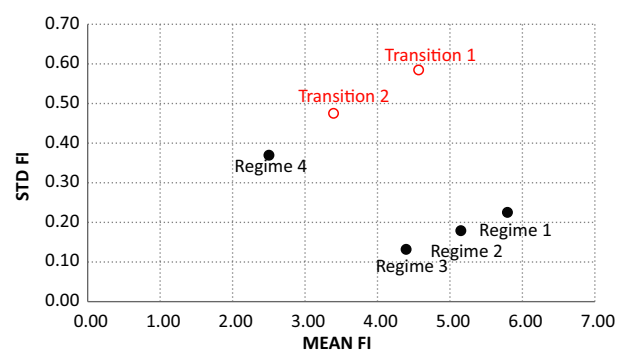


Figure 3 Results for traditional regime shift indicators applied to the BBS avian community data: variance, skewness, kurtosis, and ARI (critical slowing down). The graphs are largely uninterpretable when used on multivariate data such as this.

While all three descriptive statistics (mean (μ FI), standard deviation (σ FI), and coefficient of variation (cv FI) in FI) indicate relative stability in each of the first three regimes, the fourth regime, wholly comprised of routes from the Northern Lakes and Forest region, has a lower mean, higher standard deviation, and higher coefficient of variation in FI than the other regions, indicating that there is greater variation in community structure within this ecoregion (Fig. 4). Furthermore, the two transition zones have a higher CV than the regimes (except the 4th regime), indicating zones of high variability as community structure transitions from one regime to another.

The results of the multivariate analyses suggest that while the nMDS (stress value of 0.080 for 2 dimensions) and cluster analysis (not shown on Fig. 5 because results are identical to the nMDS) identifies distinct communities that align with the *a priori* expectations of the Omernick ecoregions, they do not distinguish between the High Plains and Central Plains communities. The nMDS (Fig. 5) shows the dissimilarity in community structure in terms of the relative position of each route to every other in ordination space, as well as how those routes align with ecoregion expectations by drawing polygons that connect the routes belonging to each Omernick-defined ecoregion. The routes from the three Plains ecoregions are closer to each other in ordination space than either the Southern Rockies or Northern Lakes and Forest routes, indicating that they are more similar in community structure. The first route of the Northern



	Route	μ FI	σ FI	cv FI
Regime 1	5–10	5.79	0.23	0.04
Transition 1	11–12	4.57	0.58	0.13
Regime 2	13–17	5.15	0.18	0.03
Regime 3	18–21	4.40	0.13	0.03
Transition 2	22–25	3.40	0.48	0.14
Regime 4	26–30	2.50	0.37	0.15

Figure 4 The stability of each terrestrial regime over space, as defined by the mean (μ FI), standard deviation (σ FI) and coefficient of variation (cv FI) of FI. While regimes 1–3 are clustered together and relatively stable with high μ FI, low σ FI and cv FI, Regime 4 was highly variable (low μ FI, high σ FI and cv FI). The transition periods exhibited the least amount of stability.

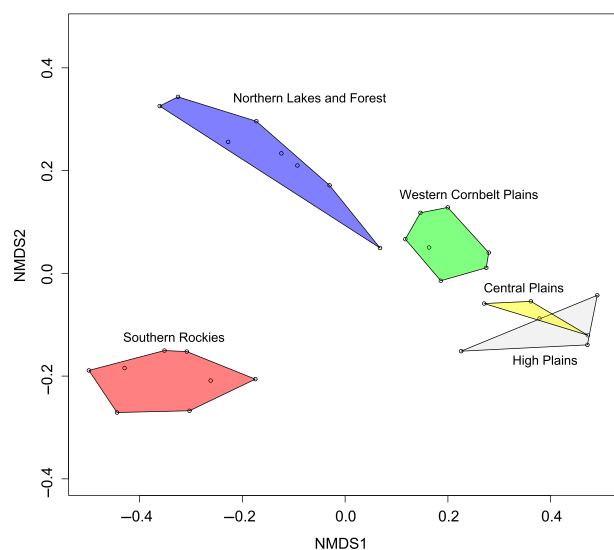


Figure 5 Ordination plot for the BBS avian community data ($k = 2$, stress = 0.080). The Breeding Bird Survey (BBS) routes are shown with open circles, whereas the polygons contain all the routes that fall into the ecoregions (Omernik 1987). The overlap between the High Plains and the Central Plains suggests that these two ecoregions do not substantially differ in avian community structure.

Lakes and Forest region, indicated by FI as part of a long transition zone between regimes, is also very proximate in ordination space to the Cornbelt Plains routes, reflecting their closeness in geographical space. However, the High Plains and Central Plains overlap each other, indicating that the nMDS does not perceive them as dissimilar.

Marine data

Fisher information detected two regimes and two transition zones, which partially align with the *a priori* expectations for the locations of the oceanic domains (Fig. 6). FI is low and rises steadily throughout two-thirds of the Bering Sea domain. Since FI never stabilises in this domain, much of the Bering Sea is classified as a transition zone. The first regime extends from the northern Bering Sea through the Chukchi Sea. As the transect enters the Beaufort Sea, FI climbs steeply without stabilising, indicating increasing dynamic order in community structure and classifying the Beaufort Sea as a second transition zone. The second regime extends from the more geographically closed-in waters of the Canadian Arctic Archipelago through the sixth oceanic domain, the Davis Strait/Labrador Sea. The entire distance from the western edge of the Archipelago to the Labrador Sea is represented by only 12 stations, so it is relatively under-represented compared to the western half of the survey.

Like the terrestrial case study, when the FI trends are compared to the traditional regime shift indicators, only the VI was able to provide sensible results (Fig. 6). The Variance Index peaks at the boundary of the Bering Sea, the Chukchi Sea, and to a lesser extent the Beaufort Sea Shelf. However, it does not distinguish whether the increased variance denotes the beginning of a stable regime, or signals a transition zone. The descriptive statistics support an overall picture of change in community structure which reflects successive patterns of an ecoregion with high variability (i.e. high σ FI and cv FI) transitioning into a more stable regime (high μ FI, and low σ FI and cv FI) (Fig. 7).

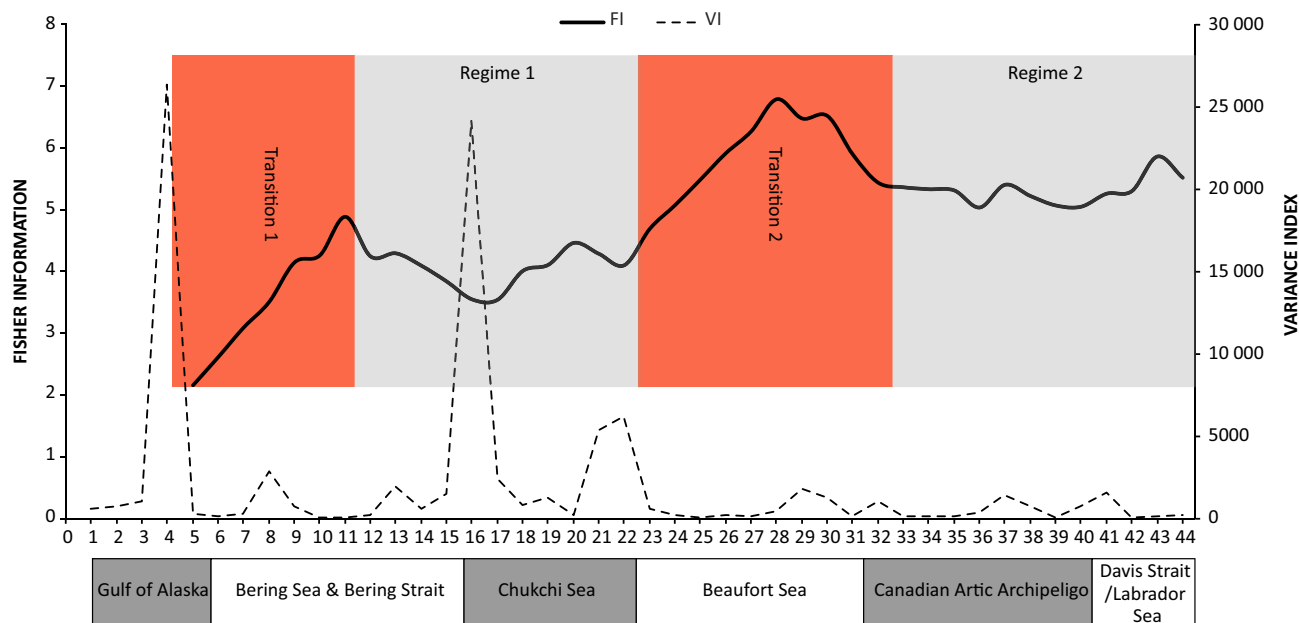


Figure 6 Fisher information (FI; bold solid line) and Variance Index (VI; faint dotted line) for zooplankton community data collected from 44 stations along a transect that begins in the Pacific ocean, traverses the Arctic and ends in the Labrador Sea (numbered from 1 to 44 and ordered from west to east along the x -axis). Because one FI value is produced per window, the first FI value is at route 5. The regimes and transition zones identified by FI are shown as boxes drawn around the FI plotted line. The *a priori* defined oceanic domains are under the x -axis, to see how well the location of the regimes identified by FI align with the oceanic domains identified in the literature.

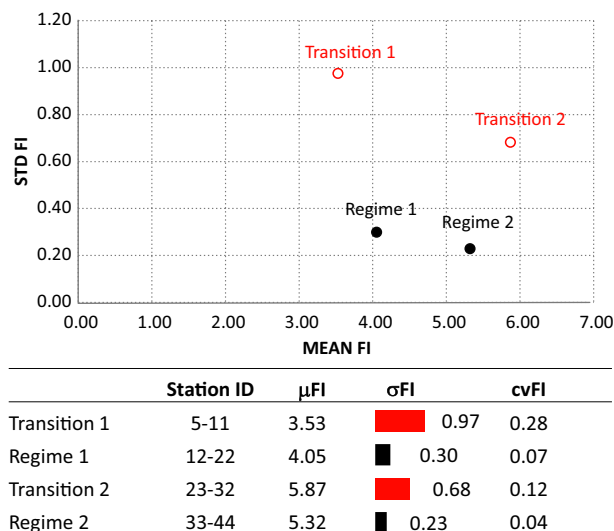


Figure 7 The stability of each marine regime over space, as defined by the mean (μ FI), standard deviation (σ FI) and coefficient of variation in FI (cvFI). While the two regimes are relatively stable with high μ FI, low σ FI and low cvFI, the transition periods exhibited the least stability. *Note:* Regimes reflect the domains identified by the trend in FI, not the regimes *a priori* identified using Carmack *et al.* (2010) and Archambault *et al.* (2010).

The multivariate analyses support the FI results, and suggest that the boundaries between the *a priori* defined ecological domains are soft, particularly between the Bering Sea and Chukchi Sea. When viewed in ordination space, the nMDS places the stations so they more or less flow from west to east along the arc, but there is also strong overlap in community structure at sampling locations near the edges of the domains [Fig. 8; (stress value of 0.121 for 3 dimensions)]. The cluster

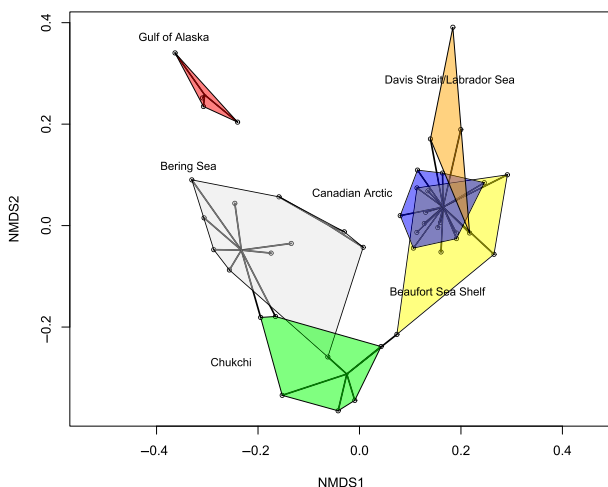


Figure 8 Ordination plot for the zooplankton community data ($k = 3$; stress = 0.121). The sampling stations are shown with open circles. The results of a cluster analysis (pruned to 6 clusters) are shown with black spiders, whereas the oceanic domains *a priori* identified from the literature are represented by the coloured polygons. Both the nMDS and the cluster analysis fail to assign some sampling stations to the 'correct' oceanic domain for all domains except the Gulf of Alaska.

analysis (Fig. 8; pruned to 6 clusters) divides the stations of the Bering Sea into two clusters, and places two of the Bering Sea stations in the Chukchi cluster, as well as fails to distinguish between the Canadian Arctic and the Davis Strait/Labrador Sea. The overall result is that the zooplankton communities do not have crisp boundaries which fully align with the *a priori* defined domains described in the methods, but have softer boundaries with considerable overlap in community structure between domains. Furthermore, FI communicates a richer story of community structure transitioning across space than either the nMDS or cluster analysis. However, unlike the BBS case study, the transition zones were marked by a rise in FI, as opposed to a drop, which may suggest a possible slowing down of changes in community structure before the patterns destabilised and the system organised into a new regime. Further work on the underlying system dynamics would be instructive.

DISCUSSION

Detecting spatial regimes with Fisher information

Given animal community data, we found that Fisher information was able to detect spatial regimes and transitions between spatial regimes in both terrestrial and aquatic ecosystems, across regional scales (1900 and 12 000 km respectively). These studies were an important step towards determining the utility of FI in detecting spatial regimes in both aquatic and terrestrial systems, even given data limitations. In contrast, the traditional indicators we examined, such as variance, skewness, kurtosis, and critical slowing down, were unable to detect spatial regimes, though this was unsurprising as they are not suited for multivariate data. The VI helped to confirm general trends, but it does not reveal details about the regime dynamics that are useful for assessing the behaviour of the system, for example whether there is a stable regime between two peaks, or whether changes in the VI are capturing a transition. Our results suggest that Fisher information can be a powerful, easy-to-use tool to assess regime shifts in animal (or other) community data, providing a biological link between anthropogenic disturbances such as land use and climate change, and spatial shifts in ecological communities.

The ecological reality of community regimes

Our analyses demonstrated that the bird community boundaries only roughly coincided with the expectations of ecoregion maps. There are substantial differences between the potential vegetation underpinning the ecoregion classifications, and the actual spatial locations of stable avian communities. If FI were to fully coincide with the ecoregion maps, then we would expect to see a stable FI value through the centre of each ecoregion, with evidence of increasing variability at the borders, indicated by declining FI. Instead, the High Plains had high variability in community structure throughout the core of the ecoregion. And rather than FI identifying three distinct Plains regimes, as per the ecoregion expectation, it identified two regimes, each of which straddled routes from the Central Plains. In other words, the avian community

structure was simplified relative to ecological expectations, with a blurring of the boundaries between what are considered distinct ecoregion types by US land agencies. Indeed, the difference in FI between regime 2 and regime 3 is such that the argument could be made that the entire Great Plains is one regime, with a slow but steady loss of order as one moves from west to east, corresponding with an increasing intensity of agriculture. The transitions to and from the Plains are both much steeper than that between the two Plains regimes, as would be expected.

The land cover summary (Table 1) supports the findings of FI as it demonstrates that the three prairie landscapes exist on a gradient of actual vegetative cover. As we move east from the High Plains to the Cornbelt Plains, the percent grassland cover drops dramatically from 60 to 5%, and the percent of row crop land cover rises from 14 to 74% (Table 1). The most significant changes occur between the High Plains and the Central Great Plains. These patterns are in contradiction to ecoregion maps (Omernik 1987; Bailey 2015), which hold the difference between the Central Great Plains and the Western Cornbelt Plains as much more fundamental (a Level I division) than that between the High Plains and the Central Great Plains (a Level III division). To the extent that the land use cover in each 400 m route buffer around the *c.* 40 km route reflects on a gross level the land cover of each ecoregion, it seems likely that the heterogeneity within the Plains landscapes due to agriculture and grazing has been reduced.

The length of each transition zone is suggestive of soft, rather than the hard boundaries depicted on ecoregion maps (Bailey 1983; Omernik 1987). The long transition from the Cornbelt Plains to the Northern Lakes and Forest, which covered more than 400 km, may be impacted by two factors: First, the final two routes in the Cornbelt Plains occur on the upward sweep of the transect and so are substantially more northern than the other Cornbelt Plains routes. Latitude is known to affect animal communities (Clergeau *et al.* 2006). Second, the first route in the Northern Lakes ecoregion technically falls into a narrow band of the North Central Hardwood Forest. This rapid shifting across three ecoregions is captured by FI as a long transition before the fourth regime begins. Finally, the higher cvFI and thus relative variability in FI in the fourth regime, which falls wholly within the Northern Lakes and Forest ecoregion, is possibly explained by the heterogeneity of the land cover, though it is also possible that further data points would reveal the fourth regime as another transition as the study ends at a geographic rather than ecological border. However, community structure in this ecoregion is likely more variable than in the other regimes because the landscape itself is more variable, as it is a patchy mosaic of water features and forest (Table 1).

The zooplankton data tell a similar story to the avian data. Although there is correspondence between zooplankton community structure, large-scale oceanic structure, and regime transitions as detected by FI, some boundaries are less defined than *a priori* expectations. Domains thought to contain distinct communities, such as the Bering Sea or Beaufort Sea Shelf (Springer *et al.* 1989; Hopcroft *et al.* 2010; Pomerleau *et al.* 2014), appear to be transition zones between stable communities. The failure of both FI and the nMDS to distinguish

Table 1 Land cover classification for a 400 m buffer around each 41 km Breeding Bird Survey route

Landcover type	Southern rockies	High plains	Central plains	Western cornbelt	Northern lakes and forest
Open water	0.01		0.01	0.01	0.04
Low intensity residential				0.02	
Deciduous forest	0.14		0.02	0.03	0.25
Evergreen forest	0.47				0.12
Mixed forest	0.01				0.11
Shrubland	0.15				
Grassland/herbaceous	0.18	0.61	0.20	0.05	
Pasture/hay	0.02	0.04	0.08	0.12	0.10
Row crops		0.14	0.66	0.74	0.03
Small grains		0.13	0.02	0.01	
Fallow		0.07			
Woody wetlands					0.28
Emergent herb wetland				0.01	0.04

The dominant land cover type for each ecoregion is in bold. Note that Northern Lakes and Forest is roughly evenly split between Deciduous Forest and Woody Wetlands, evidence for the heterogeneity of the region.

Only showing those categories for which at least one ecoregion has > 1%.

between the Canadian Arctic Archipelago and Davis Strait/Labrador Sea may be a function of inconsistent sample coverage. Further work examining how the frequency of sampling affects the power and sensitivity of FI is warranted.

The inability of FI to crisply distinguish between the Bering Sea and the Chukchi Sea is consistent with our understanding of the region as a mixing zone where Bering Shelf water mixes with water from the Anadyr current, which enters from the west, and Alaska coastal water, which enters the Bering Strait from the east (Coachman *et al.* 1975). These three water masses are believed to harbour unique zooplankton communities (Springer *et al.* 1989), and as the water masses do not mix until they pass through the Bering Strait into the Chukchi Sea, the zooplankton community contains a mixture of communities that differ from the southern Bering Sea and have high patchiness (Eisner *et al.* 2014; Pomerleau *et al.* 2014). As the transect enters the Beaufort Sea, there is a decline in both Pacific taxa and zooplankton community patchiness associated with the mixing of the three Pacific water masses and Arctic water, corresponding to greater similarity among samples and increasing dynamic order in FI. The expectation was that the Chukchi, understood to be a mixing zone of water-masses, would be identified by FI as a transition zone, and the Beaufort Sea Shelf would be a stable regime. Instead, the northern part of the Bering Sea and the Chukchi had a stable FI value denoting it as a regime, while the Beaufort Sea Shelf underwent a long and significant increase in dynamic order that never flattened sufficiently to qualify as a regime. This means that the variability in zooplankton community structure as the transect traverses the Beaufort Sea was much higher than that of the northern Bering/Chukchi Sea, despite

the latter region consisting of a mixing zone of multiple water masses. The FI results suggest that studies on dominant zooplankton species within each domain (Nelson *et al.* 2009; Walkusz *et al.* 2010; Pomerleau *et al.* 2014) may not strictly correlate to bigger picture studies which assess variability in community structure over space, or that zooplankton species compositional data or the way in which they are collected are not a good proxy for spatial regimes.

What Fisher information captures that multivariate analysis does not

The nMDS analysis largely aligned with the *a priori* ecoregion and oceanographic domain expectations, but was not always able to distinguish between ecoregions (the High Plains and Central Plains) or domains (Canadian Arctic and Davis Strait/Labrador Sea), though in the case of the zooplankton data, that failure may be a function of insufficient sampling stations in those domains. Perhaps most importantly, the multivariate analyses are largely visual; ordination methods create their own space, and thus do not tell us about spatial shifts in the location of a community. Routes that were geographically farther away from each other tended to be more dissimilar than routes that were close together. However, this rather crude depiction of community structure does not tell us where the boundaries between communities occur, whether they are hard or soft, or if the soft boundaries are themselves ecotones with stable community structure. Furthermore, the approach does not provide any insight on the spatial extent of the transitions. The ability to assess whether or not a particular community is gaining or losing order over time could allow land use managers to anticipate a potential regime shift within a location, or document if community locations shift in space over time. That said, our ability to detect change using FI may be improved by employing post hoc tests to assess trends in the index. Researchers have explored approaches such as cut-offs, Mann–Kendall tests, and Bayesian methods to help reduce interpretive uncertainty (Heberling & Hopton 2010; Vance *et al.* 2015; González-Mejía *et al.* 2016), but these methods are still under development.

Idio- or non-idiosyncratic changes in animal community regimes?

To what extent can we expect changes in plant and animal communities to occur in a fashion detectable by monitoring and analytical methods like the one presented here? Our contention is that it will depend on whether or not species' response to anthropogenic change is idiosyncratic within and across taxa. If species' responses are fully idiosyncratic, then the patterns at the community level will become chaotic as a function of independent species' responses as anthropogenic impacts accumulate and intensify. Accordingly, tracking spatial regimes and the location of the transition zones between them would not be a useful activity for managers or scientists. There are, however, constraints on individual response such that pattern identification will remain useful and feasible on shorter time scales, though the possibility of no-analogue communities seems highly likely for multi-decadal or longer time scales (Williams & Jackson 2007). In general, we expect to see changes in animal abundances in the short term as a

response to climate change and anthropogenic influence, as opposed to changes in presence/absence. Changes may result from range shifts, as there is substantial evidence documenting vagile species recently shifting their ranges to track their climatic niche (Parmesan & Yohe 2003; Parmesan 2006; Tingley *et al.* 2009), but the rate of climate change is such that migration capabilities are unlikely to keep up with the rate of thermal change (Thuiller *et al.* 2008), and the ability to shift ranges is further impeded by habitat fragmentation, which has been shown to reduce range shift (Iverson *et al.* 2004; Thuiller *et al.* 2008). As a result, range contraction due to a lack of suitable habitat and reduced survivorship within their original range is also expected (Davis & Shaw 2001; Parmesan 2006).

These issues confound the identification of ecological boundaries and our ability to track changes in boundaries over time. Fisher information can assist researchers and managers in tracking changes in the patterns of community structure associated with habitat types or biogeographical distribution areas, as well as the temporal dissolution of community structure as no-analogue communities assemble over time. A substantial benefit to Fisher information is that it circumvents many of the difficulties currently present in defining ecological boundaries, such as problems of nonlinear responses across ecotones, landscape fragmentation, and land use change in terrestrial systems, or the ephemeral nature of some oceanographic boundaries, as well as the vast spatial scales involved, all of which can be difficult to capture without exhaustive data collection (Strayer *et al.* 2003; Kent *et al.* 2006; Danz *et al.* 2012). Other researchers have discussed the challenges of tracking boundary region shifts as a way to monitor climate change, when, for example, little to no native vegetation remains (< 5% of the original prairie in the United States due to land conversion), and critical structuring processes have been repressed or altered (natural fire regimes suppressed) (Danz *et al.* 2012). Fisher information allows for the simultaneous analysis of multiple, disparate variables and provides a synoptic approach that may allow for detection of ecological change and boundary shift without pre-supposing key taxa as bell-weather species of change. However, future studies wishing to estimate more precisely the location of boundaries and how they may shift over time may also need to account for phenological/seasonal detection differences in the taxon under question.

We also propose that monitoring animal populations is more likely to reflect currently changing conditions and is easier than detecting variation in plant communities or oceanographic properties. Remotely sensed data remain challenged to identify physically similar but floristically different species, and ground-truthing large ecological regions is unfeasible. Animal species' responses are likely to occur more rapidly than plants, as there can be a large mismatch between vegetation and climate change, with changes in vegetation lagging substantially behind changes in climate (Beckage *et al.* 2008). Long-lived species such as trees can exhibit ecosystem responses to land use and climate change at century-scales because of the spatial and temporal processes structuring forests (Starfield & Chapin 1996), whereas terrestrial animal species are more vagile and can act as a leading indicator of vegetation change, or of a change in climatic variables such as

temperature. Furthermore, as we demonstrated, there can be significant differences between ecoregion mapping, which is based on potential vegetation as a function of geomorphology and soils, and the location of spatial regimes actually present after decades of land use changes. All of these issues make it critical to identify reliable spatially explicit tools for mapping the effects of climate and land use change on biodiversity (Mokany & Ferrier 2011), and our research suggests that Fisher information can be one of those tools.

CONCLUSION

Our analyses confirmed that when using multivariate data, traditional early warning indicators are very difficult to interpret, and integrated indicators such as FI and the VI more consistently detect regime shifts. We found that Fisher information provided the clearest, most detailed and interpretable signal of spatial regime shifts. Although the Variance Index did not provide clear signals as a stand-alone indicator, some congruent trends are found when the results are presented in conjunction with FI. Fisher information has the further benefit of being highly flexible in terms of the choice of variable selection and data input, and is able to detect a clear signal without the need for difficult-to-acquire high resolution data.

This research had the further benefit of highlighting the incongruence between terrestrial ecoregion maps, which are focused on ecological potential, and the ecological reality of community regimes given land use and climate change. The method presented would allow researchers to track both the shifting spatial locations of communities over time, as well as the change over time within a location, both of which are critical as the consequences of anthropogenic change manifests in community structure and dynamics over time and space.

We appreciate that for both systems analysed, a different taxa could show spatial regimes in different locations. Reptile or mammal community regime location may or may not overlap bird regime location, and the transitions between ecoregions may be more or less steep given the taxa under consideration. Neither mammals nor reptiles tend to be as vagile as birds, and their ability to disperse in response to climate or land use change is accordingly more limited. Further research evaluating the spatial regimes of other taxa and the extent to which they overlap bird and zooplankton species would be useful.

Finally, further studies that looked more deeply into community structure within a spatial regime could inform managers as to which subgroups of species are most dominant within each regime, and correlation analysis could identify the subgroups of species responsible for driving the value of Fisher information within each regime, both of which would allow managers to objectively select subgroups of species to monitor as the primary indicators of ecological stability within a community.

ACKNOWLEDGEMENTS

This research arose from a workshop series, 'Understanding and managing for resilience in the face of global change', which was funded by the USGS John Powell Center for

Synthesis and Analysis, and the USGS National Climate Change and Wildlife Center. We thank the Powell Center for supporting collaborative and interdisciplinary research efforts. We thank JC Nelson at the USGS Upper Midwest Environmental Sciences Center for creating Fig. 1a. The Nebraska Cooperative Fish and Wildlife Research Unit is jointly supported by a cooperative agreement between the United States Geological Survey, the Nebraska Game and Parks Commission, the University of Nebraska–Lincoln, the United States Fish and Wildlife Service, and the Wildlife Management Institute. This is GLERL contribution number 1838. The views expressed in this article are those of the authors and do not necessarily represent the views or policies of the U.S. Environmental Protection Agency.

AUTHORSHIP

CRA designed the study with input from all authors; SMS and JN managed the data; SMS and TE did the analyses; SMS, TE and JN wrote the first draft and all authors contributed substantially to revisions.

DATA ACCESSIBILITY

Zooplankton data can be found online at the OBIS Canada website, as Canada's Three Oceans Zooplankton 2008. The Breeding Bird Survey data is in the public domain.

REFERENCES

- Allen, C.D. & Breshears, D.D. (1998). Drought-induced shift of a forest-woodland ecotone: rapid landscape response to climate variation. *Proc. Natl Acad. Sci.*, 95, 14839–14842.
- Anand, M. & Orloci, L. (2000). On partitioning of an ecological complexity function. *Ecol. Modell.*, 132, 51–61.
- Archambault, P., Snelgrove, P., Fisher, J., Gagnon, J.-M. & Garbary, D. (2010). From sea to sea: Canada's Three Oceans of Biodiversity. *PLoS ONE*, 5, e12182.
- Bailey, R.G. (1983). Delineation of ecosystem regions. *Environ. Manage.*, 7, 365–373.
- Bailey, R.G. (2015). Ecoregions of the United States. Available at: <http://www.fs.fed.us/rm/ecoregions/products/map-ecoregions-united-states/>.
- Batt, R.D., Brock, W.A., Carpenter, S.R., Cole, J.J., Pace, M.L. & Seekell, D.A. (2013). Asymmetric response of early warning indicators of phytoplankton transition to and from cycles. *Theor. Ecol.*, 6, 285–293.
- Beaugrand, G., Reid, P., Ibanez, F., Lindley, J. & Edwards, M. (2002). Reorganization of North Atlantic marine copepod biodiversity and climate. *Science*, 96, 1692–1694.
- Beckage, B., Osborne, B., Gavin, D.G., Pucko, C., Siccama, T. & Perkins, T. (2008). A rapid upward shift of a forest ecotone during 40 years of warming in the Green Mountains of Vermont. *Proc. Natl Acad. Sci.*, 105, 4197–4202.
- Boulton, C.A., Allison, L.C. & Lenton, T.M. (2014). Early warning signals of Atlantic Meridional Overturning Circulation collapse in a fully coupled climate model. *Nat. Commun.*, 5, 5752.
- Brock, W.A. & Carpenter, S.R. (2006). Variance as a leading indicator of regime shift in ecosystem services. *Ecol. Soc.*, 11(2), 9.
- Brock, W.A. & Carpenter, S.R. (2012). Early warnings of regime shift when the ecosystem structure is unknown. *PLoS ONE*, 7, e45586.
- Cabezas, H. & Eason, T. (2010). Fisher information and order. In: *San Luis Basin Sustainability Metrics Project: A Methodology for Assessing Regional Sustainability* (eds. Heberling, M.T. & Hopton, M.E.). U.S.

- Environmental Protection Agency, Washington, DC, EPA/600/R-10/182, pp. 163–222.
- Carmack, E., McLaughlin, F., Vagle, S. & Melling, H. (2008). Canada's Three Oceans (C3O): a Canadian contribution to the International Polar Year. *PICES Press*, 16, 22–25.
- Carmack, E.C., McLaughlin, F.A., Vagle, S., Melling, H. & Williams, W.J. (2010). Structures and property distributions in the three oceans surrounding Canada in 2007: a basis for a long-term ocean climate monitoring strategy. *Atmos. Ocean*, 48, 211–224.
- Carpenter, S.R., Brock, W.A., Cole, J.J. & Pace, M.L. (2009). Leading indicators of phytoplankton transitions caused by resource competition. *Theor. Ecol.*, 2, 139–148.
- Clarke, K. (1993). Non-parametric multivariate analyses of changes in community structure. *Aust. J. Ecol.*, 18, 117–143.
- Clergeau, P., Croci, S., Jokimäki, J., Kaisanlahti-Jokimäki, M.L. & Dinetti, M. (2006). Avifauna homogenisation by urbanisation: analysis at different European latitudes. *Biol. Conserv.*, 127, 336–344.
- Cline, T.J., Seekell, D., Carpenter, S., Pace, M., Hodgson, J., Kitchell, J. *et al.* (2014). Early warnings of regime shifts: evaluation of spatial indicators from a whole-ecosystem experiment. *Ecosphere*, 5(8).
- Coachman, L., Aagaard, K. & Tripp, R. (1975). *Bering Strait: The Regional and Physical Oceanography*. University of Washington Press, Seattle, Washington.
- Dai, L., Vorselen, D., Korolev, K.S. & Gore, J. (2012). Generic indicators for loss of resilience before a tipping point leading to population collapse. *Science*, 336, 1175–1177.
- Dai, L., Korolev, K.S. & Gore, J. (2013). Slower recovery in space before collapse of connected populations. *Nature*, 496, 355–359.
- Dakos, V., Scheffer, M., van Nes, E.H., Brovkin, V., Petoukhov, V. & Held, H. (2008). Slowing down as an early warning signal for abrupt climate change. *Proc. Natl Acad. Sci.*, 105, 14308–14312.
- Dakos, V., Kéfi, S., Rietkerk, M., van Nes, E.H. & Scheffer, M. (2011). Slowing down in spatially patterned ecosystems at the brink of collapse. *Am. Nat.*, 177, E153–E166.
- Dakos, V., Carpenter, S.R., Brock, W.S., Ellison, A.M., Guttal, V., Ives, A.R. *et al.* (2012). Methods for detecting early warnings of critical transitions in time series illustrated using simulated ecological data. *PLoS ONE*, 7, e41010.
- Dakos, V., van Nes, E.H. & Scheffer, M. (2013). Flickering as an early warning signal. *Theor. Ecol.*, 6, 309–317.
- Danz, N.P., Frelich, L.E., Reich, P.B. & Niemi, G.J. (2012). Do vegetation boundaries display smooth or abrupt spatial transitions along environmental gradients? Evidence from the prairie-forest biome boundary of historic Minnesota, USA. *J. Veg. Sci.*, 24, 1129–1140.
- Davis, M.B. & Shaw, R.G. (2001). Range shifts and adaptive responses to quaternary climate change. *Science*, 292, 673–680.
- Drake, J.M. & Griffen, B.D. (2010). Early warning signals of extinction in deteriorating environments. *Nature*, 467, 456–459.
- Eason, T. & Cabezas, H. (2012). Evaluating the sustainability of a regional system using Fisher information in the San Luis Basin, Colorado. *J. Environ. Manage.*, 94, 41–49.
- Eason, T. & Garmestani, A.S. (2012). Cross-scale dynamics of a regional urban system through time. *Reg. Dev.*, 36, 55–76.
- Eason, T., Garmestani, A.S. & Cabezas, H. (2014). Managing for resilience: early detection of regime shifts in complex systems. *Clean Technol. Environ. Policy*, 16, 773–783.
- Eason, T., Garmestani, A.S., Stow, C.A., Rojo, C., Alvarez-Cobelas, M. & Cabezas, H. (2016). Managing for resilience: an information theory-based approach to assessing ecosystems. *J. Appl. Ecol.*, 53, 656–665.
- Edwards, M. & Richardson, A.J. (2004). Impact of climate change on marine pelagic phenology and trophic mismatch. *Nature*, 430, 881–884.
- Eisner, L., Napp, J., Mier, K., Pinchuk, A. & Andrews, A. III (2014). Climate-mediated changes in zooplankton community structure for the eastern Bering Sea. *Deep Sea Res. Part II Trop. Stud. Oceanogr.*, 109, 157–171.
- Fagan, W.F., Fortin, M.-J. & Soykan, C. (2003). Integrating edge detection and dynamic modeling in quantitative analyses of ecological boundaries. *Bios*, 53, 730–738.
- Fath, B.D. & Cabezas, H. (2004). Exergy and Fisher Information as ecological indices. *Ecol. Modell.*, 174, 25–35.
- Fath, B.D., Cabezas, H. & Pawlowski, C.W. (2003). Regime changes in ecological systems: an information theory approach. *J. Theor. Biol.*, 222, 517–530.
- Fisher, R.A. (1922). On the mathematical foundations of theoretical statistics. *Philos. Trans. R. Soc. A*, 222, 309–368.
- Fukami, T. & Nakajima, M. (2011). Community assembly: alternative stable states or alternative transient states? *Ecol. Lett.*, 14, 973–984.
- Gonzalez-Mejia, A.M. (2011). *Fisher Information: Sustainability Analysis of Several US Metropolitan Statistical Areas*. University of Cincinnati, Ph.D.
- Gonzalez-Mejia, A.M., Vance, L., Eason, T. & Cabezas, H. (2015). Recent development in the application of Fisher information to sustainable environmental management. In *Assessing and Measuring Environmental Impact and Sustainability*. (ed Klemes, J.). Elsevier, New York.
- González-Mejía, A.M., Eason, T.N. & Cabezas, H. (2016). System learning approach to assess sustainability and forecast trends in regional dynamics: the San Luis Basin study, Colorado, U.S.A. *Environ. Model. Softw.*, 81, 1–11.
- Grebmeier, J., Overland, J., Moore, S., Farley, E., Carmack, E., LW, C. *et al.* (2006). Major ecosystem shift in the Northern Bering Sea. *Science*, 311, 1461–1464.
- Guttal, V. & Jayaprakash, C. (2008). Changing skewness: an early warning signal of regime shifts in ecosystems. *Ecol. Lett.*, 11, 450–460.
- Hastings, A. & Wysham, D.B. (2010). Regime shifts in ecological systems can occur with no warning. *Ecol. Lett.*, 13, 464–472.
- Heberling, M.T. & Hopton, M.E. (2010). San Luis Basin Sustainability Metrics Project: A methodology for evaluating regional sustainability. US EPA Report EPA/600/R-10/182.
- Hooff, R.C. & Peterson, W.T. (2006). Copepod biodiversity as an indicator of changes in ocean and climate conditions of the northern California current ecosystem. *Limnol. Oceanogr.*, 51, 2607–2620.
- Hopcroft, R., Kosobokova, K. & Pinchuk, A. (2010). Zooplankton community patterns in the Chukchi Sea during summer 2004. *Deep Sea Res. Part II Trop. Stud. Oceanogr.*, 57, 27–39.
- Iverson, L.R., Schwartz, M.W. & Prasad, A.M. (2004). How fast and far might tree species migrate in the eastern United States due to climate change? *Glob. Ecol. Biogeogr.*, 13, 209–219.
- Karunanithi, A.T., Cabezas, H., Frieden, B.R. & Pawlowski, C.W. (2008). Detection and assessment of ecosystem regime shifts from Fisher Information. *Ecol. Soc.*, 13(1), 22.
- Karunanithi, A.T., Garmestani, A.S., Eason, T. & Cabezas, H. (2011). The characterization of socio-political instability, development and sustainability with Fisher information. *Glob. Environ. Chang.*, 21, 77–84.
- Kéfi, S., Guttal, V., Brock, W.A., Carpenter, S.R., Ellison, A.M., Livina, V.N. *et al.* (2014). Early warning signals of ecological transitions: methods for spatial patterns. *PLoS ONE*, 9, e92097.
- Kent, M., Moyeed, R.A., Reid, C.L., Pakeman, R. & Weaver, R. (2006). Geostatistics, spatial rate of change analysis and boundary detection in plant ecology and biogeography. *Prog. Phys. Geogr.*, 30, 201–231.
- Lindgren, M., Dakos, V., Gröger, J.P., Gårdmark, A., Kornilovs, G., Otto, S.A. *et al.* (2012). Early detection of ecosystem regime shifts: a multiple method evaluation for management application. *PLoS ONE*, 7, e38410.
- Litzow, M.A., Mueter, F.J. & Urban, J.D. (2013). Rising catch variability preceded historical fisheries collapses in Alaska. *Ecol. Appl.*, 23, 1475–1487.
- Longhurst, A. (1998). *Ecological Geography of the Seas*. Academic Press, San Diego.
- Mantua, N. (2004). Methods for detecting regime shifts in large marine ecosystems: a review with approaches applied to North Pacific data. *Prog. Oceanogr.*, 60, 165–182.
- Mayer, A.L., Pawlowski, C.W., Fath, B.D. & Cabezas, H. (2007). Applications of Fisher information to the management of sustainable

- environmental systems. In *Exploratory Data Analysis Using Fisher Information*. (eds Frieden, B.R., Gatenby, R.A.). Springer-Verlag, London, pp. 217–243.
- Mokany, K. & Ferrier, S. (2011). Predicting impacts of climate change on biodiversity: a role for semi-mechanistic community-level modelling. *Divers. Distrib.*, 17, 374–380.
- Nelson, R.J., Carmack, E. & McLaughlin, F. (2009). Penetration of Pacific zooplankton into the western Arctic Ocean tracked with molecular population genetics. *Mar. Ecol. Prog. Ser.*, 381, 129–138.
- Oksanen, J. (2013). Multivariate analysis of ecological communities in R: vegan tutorial. Available at: <http://www.cc.oulu.fi/~jarioksa/opetus/metodi/>.
- Omernik, J.M. (1987). Ecoregions of the conterminous United States. *Ann. Assoc. Am. Geogr.*, 77, 118–125.
- Pace, M.L., Carpenter, S.R., Johnson, R.A. & Kurtzweil, J.T. (2013). Zooplankton provide early warnings of a regime shift in a whole lake manipulation. *Limnol. Oceanogr.*, 58, 525–532.
- Parnesan, C. (2006). Ecological and evolutionary responses to recent climate change. *Annu. Rev. Ecol. Evol. Syst.*, 37, 637–669.
- Parnesan, C. & Yohe, G. (2003). A globally coherent fingerprint of climate change impacts across natural systems. *Nature*, 421, 37–42.
- Patricio, J., Ulanowicz, R.E., Pardal, M.A. & Marques, J.C. (2004). Ascendency as an ecological indicator: a case study of estuarine pulse eutrophication. *Estuar. Coast. Shelf Sci.*, 60, 23–35.
- Pawlowski, C.W. & Cabezas, H. (2008). Identification of regime shifts in time series using neighborhood statistics. *Ecol. Complex.*, 5, 30–36.
- Pearman, P.B., Randin, C.F., Broennimann, O., Vittoz, P., van der Knaap, W.O., Engler, R. *et al.* (2008). Prediction of plant species distributions across six millennia. *Ecol. Lett.*, 11, 357–369.
- Pearson, R.G. (2006). Climate change and the migration capacity of species. *Trends Ecol. Evol.*, 21, 111–113.
- Perretti, C.T. & Munch, S.B. (2012). Regime shift indicators fail under noise levels commonly observed in ecological systems. *Ecol. Appl.*, 22, 1772–1779.
- Pomerleau, C., Winkler, G., Sastri, A.R., Nelson, R.J., Vagle, S., Lesage, V. *et al.* (2011). Spatial patterns in zooplankton communities across the eastern Canadian sub-Arctic and Arctic waters: insights from stable carbon and nitrogen isotope ratios. *J. Plankton Res.*, 33, 1779–1792.
- Pomerleau, C., Nelson, R.J., Hunt, B.P.V., Sastri, A.R. & Williams, W.J. (2014). Spatial patterns in zooplankton communities and stable isotope ratios in relation to oceanographic conditions in the sub-Arctic Pacific and western Arctic regions during the summer of 2008. *J. Plankton Res.*, 36, 757–775.
- R Development Core Team. (2013). R: A language and environment for statistical computing. Available at: <http://www.r-project.org>.
- Rice, J.C. & Rochet, M.J. (2005). A framework for selecting a suite of indicators for fisheries management. *ICES J. Mar. Sci.*, 62, 516–527.
- Rombouts, I., Beaugrand, G., Artigas, L.F., Dauvin, J.-C., Gevaert, F., Goberville, E. *et al.* (2013). Evaluating marine ecosystem health: case studies of indicators using direct observations and modelling methods. *Ecol. Indic.*, 24, 353–365.
- Samhouri, J.F., Levin, P.S. & Harvey, C.J. (2009). Quantitative evaluation of marine ecosystem indicator performance using food web models. *Ecosystems*, 12, 1283–1298.
- Sauer, J.R., Hines, J. & Fallon, J.E. (2014). USGS Patuxent Wildlife Research Center. North Am. Breed. Bird Surv. 1966–2012. Available at: <http://www.pwrc.usgs.gov/bbs>.
- Scheffer, M. (2009). *Critical Transitions in Nature and Society*. Princeton University Press, Princeton, New Jersey.
- Scheffer, M. & Carpenter, S.R. (2003). Catastrophic regime shifts in ecosystems: linking theory to observation. *Trends Ecol. Evol.*, 18, 648–656.
- Scheffer, M., Rinaldi, S., Huisman, J. & Weissing, F.J. (2003). Why plankton communities have no equilibrium: solutions to the paradox. *Hydrobiologia*, 491, 9–18.
- Scheffer, M., Bascompte, J., Brock, W.A., Brovkin, V., Carpenter, S.R., Dakos, V. *et al.* (2009). Early-warning signals for critical transitions. *Nature*, 461, 53–59.
- Seekell, D.A., Carpenter, S.R. & Pace, M.L. (2011). Conditional heteroscedasticity as a leading indicator of ecological regime shifts. *Am. Nat.*, 178, 442–451.
- Seekell, D.A., Carpenter, S.R., Cline, T.J. & Pace, M.L. (2012). Conditional heteroscedasticity forecasts regime shift in a whole-ecosystem experiment. *Ecosystems*, 15, 741–747.
- Spanbauer, T.L., Allen, C.R., Angeler, D.G., Eason, T., Fritz, S.C., Garmestani, A.S. *et al.* (2014). Prolonged instability prior to a regime shift. *PLoS ONE*, 9, e108936.
- Springer, A.M., McRoy, C.P. & Turco, K.R. (1989). The paradox of pelagic food webs in the northern Bering Sea II. Zooplankton communities. *Cont. Shelf Res.*, 9, 359–386.
- Starfield, A.M. & Chapin, F.S. (1996). Model of transient changes in arctic and boreal vegetation in response to climate and land use change. *Ecol. Appl.*, 6, 842–864.
- Strayer, D.L., Power, M.E., Fagan, W.F., Pickett, S.T.A. & Belnap, J. (2003). A classification of ecological boundaries. *Bioscience*, 53, 723–729.
- Svirezhev, Y.M. (2000). Thermodynamics and ecology. *Ecol. Modell.*, 132, 11–22.
- Thuiller, W., Albert, C., Araújo, M.B., Berry, P.M., Cabeza, M., Guisan, A. *et al.* (2008). Predicting global change impacts on plant species' distributions: future challenges. *Perspect. Plant Ecol. Evol. Syst.*, 9, 137–152.
- Tingley, M.W., Monahan, W.B., Beissinger, S.R. & Moritz, C. (2009). Birds track their Grinnellian niche through a century of climate change. *Proc. Natl Acad. Sci.*, 106(Suppl), 19637–19643.
- United States Department of the Interior. Omernik's Level III Ecoregions of the Continental United States. Map Layer Info. Available at: <http://nationalatlas.gov/mld/ecocomp.html>.
- Vance, L., Eason, T. & Cabezas, H. (2015). An information-based approach to assessing the sustainability and stability of an island system. *Int. J. Sustain. Dev. World Ecol.*, 22, 64–75.
- Walkusz, W., Paulic, J., Kwasniewski, S., Williams, W., Wong, S. & Papst, M. (2010). Distribution, diversity and biomass of summer zooplankton from the coastal Canadian Beaufort Sea. *Polar Biol.*, 33, 321–335.
- Wassmann, P., Kosobokova, K., Slagstad, D., Drinkwater, K., Hopcroft, R., Moore, S. *et al.* (2015). The contiguous domains of Arctic Ocean advection: trails of life and death. *Prog. Oceanogr.*, 139, 42–65.
- Williams, J.W. & Jackson, S.T. (2007). Novel climates, no-analog communities, and ecological surprises. *Front. Ecol. Environ.*, 5(9), 475–482.
- Yarrow, M.M. & Salthe, S.N. (2008). Ecological boundaries in the context of hierarchy theory. *Biosystems*, 92, 233–244.

Editor, Dave Hodgson

Manuscript received 6 September 2016

First decision made 14 October 2016

Manuscript accepted 28 October 2016