

University of Nebraska - Lincoln

DigitalCommons@University of Nebraska - Lincoln

Conservation and Survey Division

Natural Resources, School of

1947

Nuckolls County Preliminary Ground Water Study 1947 and 1948

E.C. Reed

Follow this and additional works at: <https://digitalcommons.unl.edu/conservationsurvey>



Part of the [Geology Commons](#), [Geomorphology Commons](#), [Hydrology Commons](#), [Paleontology Commons](#), [Sedimentology Commons](#), [Soil Science Commons](#), and the [Stratigraphy Commons](#)

Reed, E.C., "Nuckolls County Preliminary Ground Water Study 1947 and 1948" (1947). *Conservation and Survey Division*. 819.

<https://digitalcommons.unl.edu/conservationsurvey/819>

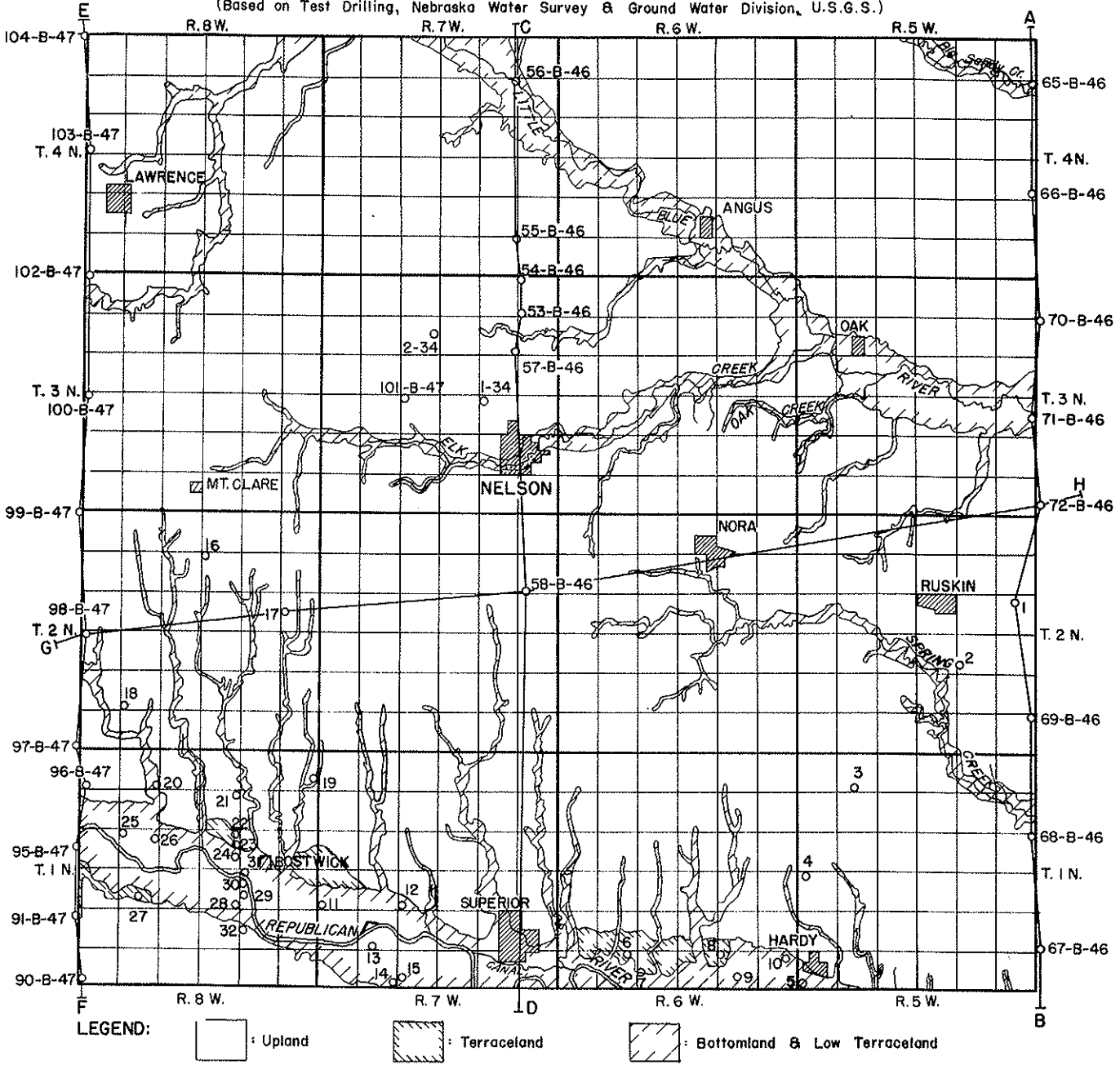
This Article is brought to you for free and open access by the Natural Resources, School of at DigitalCommons@University of Nebraska - Lincoln. It has been accepted for inclusion in Conservation and Survey Division by an authorized administrator of DigitalCommons@University of Nebraska - Lincoln.

Nuckolls County
 Preliminary G.W.
 Study
 1947 and 1948

NUCKOLLS COUNTY

FIGURE I

Showing Test Hole Locations, Type of Land & Lines of Profile Sections
 (Based on Test Drilling, Nebraska Water Survey & Ground Water Division, U.S.G.S.)

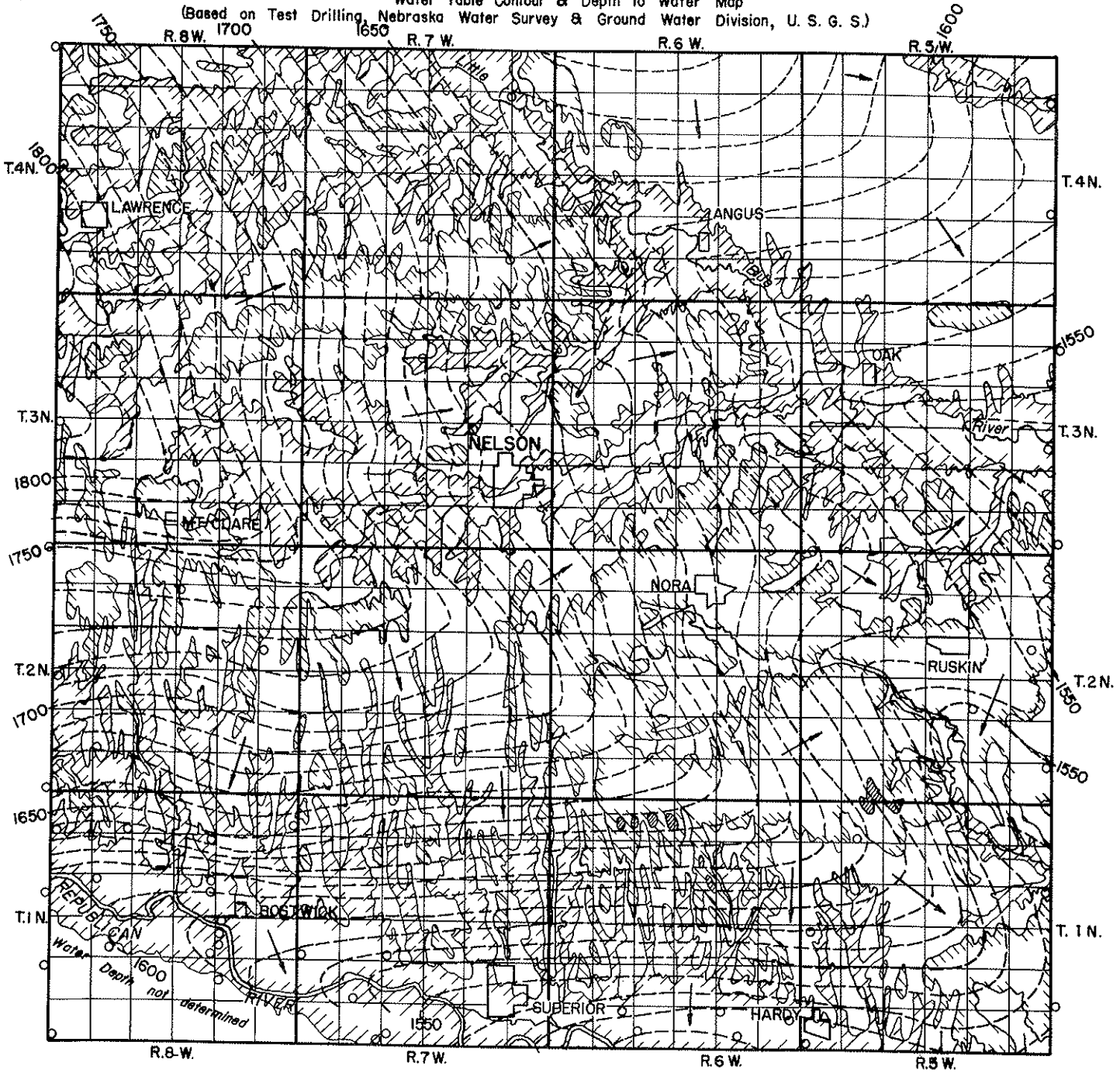


NUCKOLLS COUNTY

FIGURE 2

Water Table Contour & Depth to Water Map

(Based on Test Drilling, Nebraska Water Survey & Ground Water Division, U. S. G. S.)



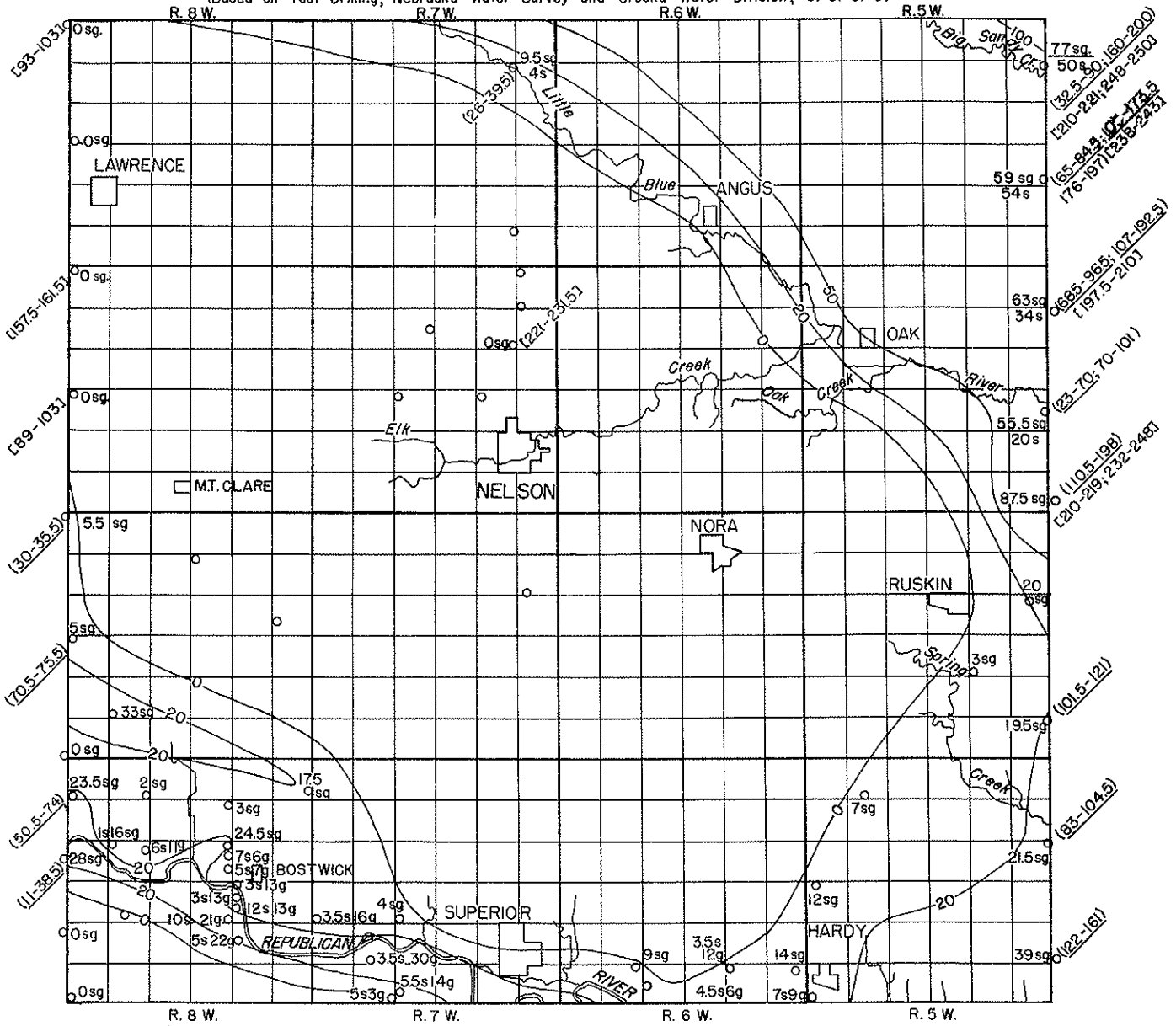
LEGEND:

0 to 60 Feet to Static Water Level	60 to 100 Ft to S. W. L.	100 to 150 Ft to S. W. L.	150 to 200 Ft to S. W. L.
1600 Water Table Contours (Sea Level Elevations)		Direction of Ground Water Movement	

NUCKOLLS COUNTY

FIGURE 3

Groundwater Map Showing Thickness of Water-Saturated Sand and Gravel
 (Based on Test Drilling, Nebraska Water Survey and Ground Water Division, U. S. G. S.)

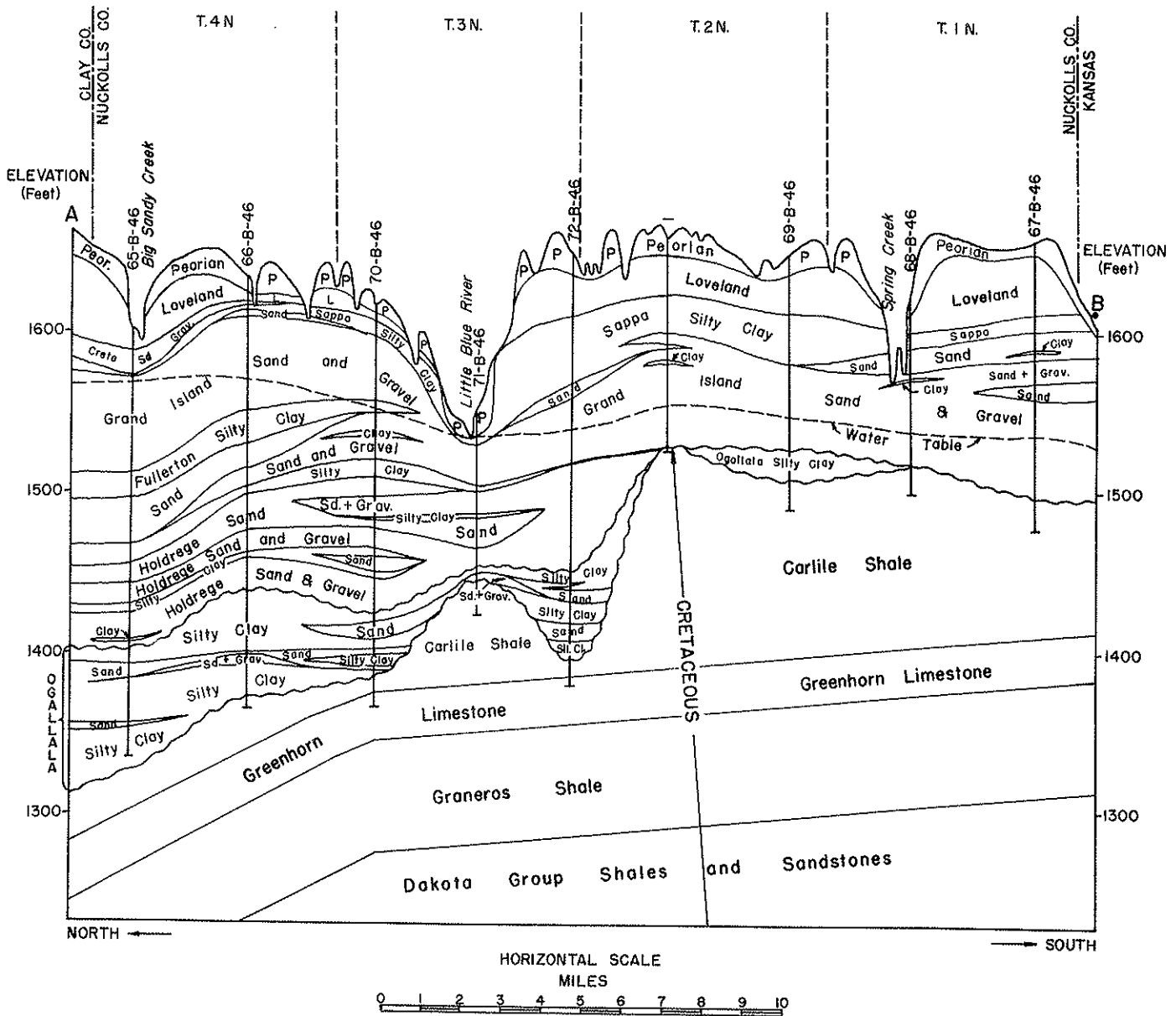


LEGEND:
 44.5sg 20s ○ Test Hole Showing Saturated Thickness in Feet of Sand & Gravel (sg) and Sand (s).
 20 — Saturated Thickness Line (Figure indicates Thickness of Water-Saturated Sand & Gravel along Line)
 ○ Depth in Feet to Water-Bearing Pleistocene Sand or Sand & Gravel (most favorable material underlined)
 ○ Depth in Feet to Water-Bearing Sand or Sand and Gravel in Ogallala Formation

NUCKOLLS COUNTY

FIGURE 4

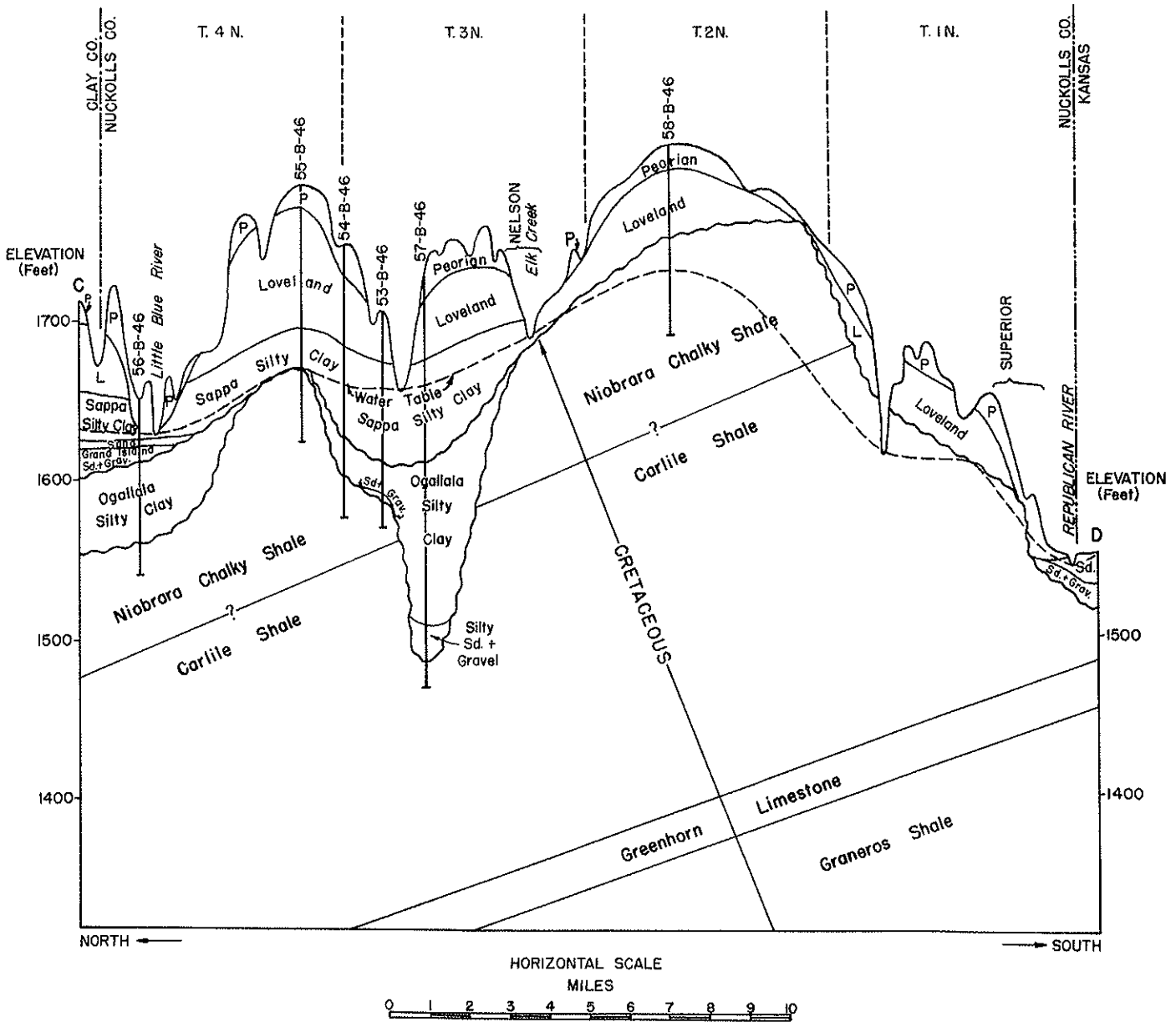
North-South Profile Section along Nuckolls-Thayer County Line
 (Based on Test Drilling, Nebraska Water Survey & Ground Water Division, U. S. G. S.)



NUCKOLLS COUNTY

FIGURE 5

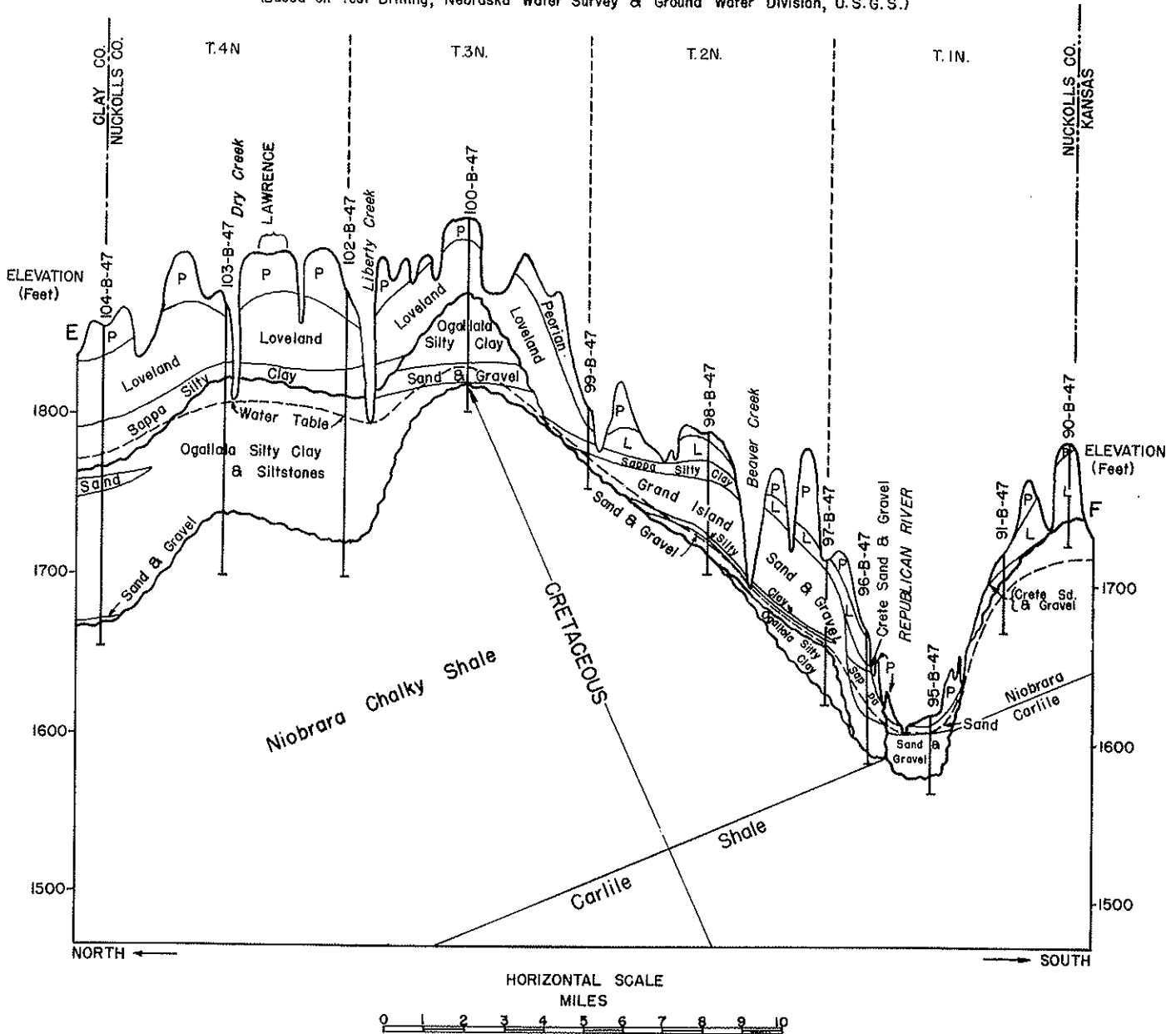
North-South Profile Section across Central Nuckolls County
 (Based on Test Drilling, Nebraska Water Survey & Ground Water Division, U. S. G. S.)



NUCKOLLS COUNTY

FIGURE 6

North-South Profile Section along Nuckolls-Webster County Line
(Based on Test Drilling, Nebraska Water Survey & Ground Water Division, U.S.G.S.)



NUCKOLLS COUNTY

FIGURE 7

East-West Profile Section across Central Nuckolls County
 (Based on Test Drilling, Nebraska Water Survey & Ground Water Division, U.S.G.S.)

