

2014

# Sarucallis kahawaluokalani (Kirkaldy) (Hemiptera: Aphididae), a new invasive aphid on San Andres island and mainland Colombia, with notes on other adventive species

Takumasa Kondo

*Corporación Colombiana de Investigación Agropecuaria (CORPOICA)*, tkondo@corpoica.org.co

Ronald Simbaqueba Cortés

*Universidad Nacional de Colombia, Bogotá*, simbaquebacortes@gmail.com

Follow this and additional works at: <http://digitalcommons.unl.edu/insectamundi>

---

Kondo, Takumasa and Cortés, Ronald Simbaqueba, "Sarucallis kahawaluokalani (Kirkaldy) (Hemiptera: Aphididae), a new invasive aphid on San Andres island and mainland Colombia, with notes on other adventive species" (2014). *Insecta Mundi*. 864.

<http://digitalcommons.unl.edu/insectamundi/864>

This Article is brought to you for free and open access by the Center for Systematic Entomology, Gainesville, Florida at DigitalCommons@University of Nebraska - Lincoln. It has been accepted for inclusion in Insecta Mundi by an authorized administrator of DigitalCommons@University of Nebraska - Lincoln.

# INSECTA MUNDI

A Journal of World Insect Systematics

---

0362

*Sarucallis kahawaluokalani* (Kirkaldy) (Hemiptera: Aphididae),  
a new invasive aphid on San Andres island and mainland Colombia,  
with notes on other adventive species

Takumasa Kondo

Corporación Colombiana de Investigación Agropecuaria (CORPOICA)  
Centro de Investigación Palmira  
Calle 23, Carrera 37  
Contiguo al Penal  
Palmira, Valle, Colombia

Ronald Simbaqueba Cortés

Ingeniería Agronómica, Facultad de Ciencias Agrarias  
Universidad Nacional de Colombia, Bogotá  
Grupo Sistemática de Insectos Agronomía (SIA)  
Línea Taxonomía de insectos  
Universidad Nacional de Colombia  
Facultad de Agronomía  
Museo Entomológico Universidad Nacional Agronomía Bogotá (UNAB)  
Bogotá, Colombia

Date of Issue: April 25, 2014

Takumasa Kondo and Ronald Simbaqueba Cortés

*Sarucallis kahawaluokalani* (Kirkaldy) (Hemiptera: Aphididae), a new invasive aphid on San Andres island and mainland Colombia, with notes on other adventive species  
*Insecta Mundi* 0362: 1–10

ZooBank Registered: urn:lsid:zoobank.org:pub:B42E6A0A-82EE-4F25-A242-15E4CF17B736

**Published in 2014 by**

Center for Systematic Entomology, Inc.

P. O. Box 141874

Gainesville, FL 32614-1874 USA

<http://centerforsystematicentomology.org/>

**Insecta Mundi** is a journal primarily devoted to insect systematics, but articles can be published on any non-marine arthropod. Topics considered for publication include systematics, taxonomy, nomenclature, checklists, faunal works, and natural history. **Insecta Mundi** will not consider works in the applied sciences (i.e. medical entomology, pest control research, etc.), and no longer publishes book reviews or editorials. **Insecta Mundi** publishes original research or discoveries in an inexpensive and timely manner, distributing them free via open access on the internet on the date of publication.

**Insecta Mundi** is referenced or abstracted by several sources including the Zoological Record, CAB Abstracts, etc. **Insecta Mundi** is published irregularly throughout the year, with completed manuscripts assigned an individual number. Manuscripts must be peer reviewed prior to submission, after which they are reviewed by the editorial board to ensure quality. One author of each submitted manuscript must be a current member of the Center for Systematic Entomology. Manuscript preparation guidelines are available at the CSE website.

**Managing editor:** Eugenio H. Nearn, e-mail: [gino@nearns.com](mailto:gino@nearns.com)

**Production editors:** Michael C. Thomas, Paul E. Skelley, Brian Armitage, Ian Stocks, Eugenio H. Nearn

**Editorial board:** J. H. Frank, M. J. Paulsen

**Subject editors:** G.B. Edwards, Joe Eger, A. Rasmussen, Gary Steck, Ian Stocks, A. Van Pelt, Jennifer M. Zaspel, Nathan P. Lord, Adam Brunke

**Spanish editors:** Julieta Brambila, Angélico Asenjo

**Website coordinator:** Eugenio H. Nearn

**Printed copies (ISSN 0749-6737) annually deposited in libraries:**

CSIRO, Canberra, ACT, Australia

Museu de Zoologia, São Paulo, Brazil

Agriculture and AgriFood Canada, Ottawa, ON, Canada

The Natural History Museum, London, Great Britain

Muzeum i Instytut Zoologii PAN, Warsaw, Poland

National Taiwan University, Taipei, Taiwan

California Academy of Sciences, San Francisco, CA, USA

Florida Department of Agriculture and Consumer Services, Gainesville, FL, USA

Field Museum of Natural History, Chicago, IL, USA

National Museum of Natural History, Smithsonian Institution, Washington, DC, USA

Zoological Institute of Russian Academy of Sciences, Saint-Petersburg, Russia

**Electronic copies (On-Line ISSN 1942-1354, CDROM ISSN 1942-1362) in PDF format:**

Printed CD or DVD mailed to all members at end of year. Archived digitally by Portico.

Florida Virtual Campus: <http://purl.fcla.edu/fcla/insectamundi>

University of Nebraska-Lincoln, Digital Commons: <http://digitalcommons.unl.edu/insectamundi/>

Goethe-Universität, Frankfurt am Main: <http://nbn-resolving.de/urn/resolver.pl?urn:nbn:de:hebis:30:3-135240>

**Author instructions** available on the *Insecta Mundi* page at:

<http://centerforsystematicentomology.org/insectamundi/>

Copyright held by the author(s). This is an open access article distributed under the terms of the Creative Commons, Attribution Non-Commercial License, which permits unrestricted non-commercial use, distribution, and reproduction in any medium, provided the original author(s) and source are credited. <http://creativecommons.org/licenses/by-nc/3.0/>

*Sarucallis kahawaluokalani* (Kirkaldy) (Hemiptera: Aphididae), a new invasive aphid on San Andres island and mainland Colombia, with notes on other adventive species

Takumasa Kondo

Corporación Colombiana de Investigación Agropecuaria (CORPOICA)  
Centro de Investigación Palmira  
Calle 23, Carrera 37  
Contiguo al Penal  
Palmira, Valle, Colombia  
tkondo@corpoica.org.co

Ronald Simbaqueba Cortés

Ingeniería Agronómica, Facultad de Ciencias Agrarias  
Universidad Nacional de Colombia, Bogotá  
Grupo Sistemática de Insectos Agronomía (SIA)  
Línea Taxonomía de insectos  
Universidad Nacional de Colombia  
Facultad de Agronomía  
Museo Entomológico Universidad Nacional Agronomía Bogotá (UNAB)  
Bogotá, Colombia  
simbaquebacortes@gmail.com

**Abstract.** The crape myrtle aphid *Sarucallis kahawaluokalani* (Kirkaldy) (Hemiptera: Aphididae) collected on *Lagerstroemia indica* (Lythraceae) is herein reported as a new invasive species in the city of Palmira, State of Valle del Cauca, and on San Andres island, in the State of San Andres, Old Providence and Santa Catalina, Colombia. The species is illustrated and diagnosed. A brief review of recent invasive species in Colombia, i.e., *Ceroplastes rubens* Maskell (Hemiptera: Coccidae), *Crypticerya multicastrices* Kondo and Unruh (Hemiptera: Monophlebidae) [invasive on the island of San Andres], *Diaphorina citri* Kuwayama (Hemiptera: Liviidae), *Harmonia axyridis* (Pallas) (Coleoptera: Coccinellidae), *Maconellicoccus hirsutus* (Green) (Hemiptera: Pseudococcidae) and *Singhiella simplex* (Singh) (Hemiptera: Aleyrodidae); and other adventive (but non-invasive) species in Colombia, i.e., *Anagyrus kamali* Moursi (Hymenoptera: Encyrtidae), *Gyranusoidea indica* Shafee, Alam and Agarwal (Hymenoptera: Encyrtidae), and *Tamarixia radiata* (Waterston) (Hymenoptera: Eulophidae) is provided.

**Resumen.** El pulgón del árbol de Júpiter, *Sarucallis kahawaluokalani* (Kirkaldy) (Hemiptera: Aphididae) colectado sobre *Lagerstroemia indica* (Lythraceae) se reporta como un nuevo insecto invasor en la ciudad de Palmira, departamento del Valle del Cauca y en la isla de San Andrés, departamento de San Andrés, Providencia y Santa Catalina, Colombia. La especie es ilustrada y diagnosticada. Se provee un breve resumen de especies invasoras recientes en Colombia, i.e., *Ceroplastes rubens* Maskell (Hemiptera: Coccidae), *Crypticerya multicastrices* Kondo and Unruh (Hemiptera: Monophlebidae) [invasora en la isla de San Andrés], *Diaphorina citri* Kuwayama (Hemiptera: Liviidae), *Harmonia axyridis* (Pallas) (Coleoptera: Coccinellidae), *Maconellicoccus hirsutus* (Green) (Hemiptera: Pseudococcidae) y *Singhiella simplex* (Singh) (Hemiptera: Aleyrodidae); y otras especies adventicias (pero no invasoras) en Colombia, i.e., *Anagyrus kamali* Moursi (Hymenoptera: Encyrtidae), *Gyranusoidea indica* Shafee, Alam and Agarwal (Hymenoptera: Encyrtidae) y *Tamarixia radiata* (Waterston) (Hymenoptera: Eulophidae).

## Introduction

Crape myrtle, *Lagerstroemia indica* L. (Lythraceae), is native to China, but very common in cultivation and also feral in Bangladesh, Bhutan, Cambodia, India, Indonesia, Japan, Laos, Malaysia, Nepal, Pakistan, Philippines, Singapore, Sri Lanka, Thailand and Vietnam (Sánchez de Lorenzo-Cáceres 2000). In the New World, crape myrtle is recorded from Belize, Bolivia, Cameroon, Colombia, Costa Rica, Dominican Republic, Ecuador, El Salvador, Guatemala, Honduras, Jamaica, Mexico, Nicaragua, Panama, Paraguay, Peru, Puerto Rico, United States, U.S. Virgin Islands, Venezuela (STRI Herbarium 2013); and Brazil (Lorenzi and Souza 2001).



**Figure 1.** Adult female of *Sarucallis kahawaluokalani* (Kirkaldy). **A.** Alate female in life. Palmira, Colombia. **B.** Slide-mounted alate female. Notice large bifid tubercle (see arrow). Photo A taken by T. Kondo; B by R. Simbaqueba-Cortés.

Recently, the first author collected specimens of a characteristic aphid with ornate wings on crape myrtle at Corpoica, Palmira Research Center, in the city of Palmira, in the State of Valle del Cauca, Colombia. The same aphid species was later collected on the same host on the island of San Andres, in the State of San Andres, Old Providence and Santa Catalina, of Colombia, located in the Caribbean Sea. The aphid was identified as *Sarucallis kahawaluokalani* (Kirkaldy) (Hemiptera: Aphididae), a new invasive species for Colombia. Here we provide some information that will aid in the identification of this aphid species and a summary of other recent adventive (invasive and non-invasive) species in Colombia. There are many definitions for invasive species, e.g., “invasive species are those that are not native to the ecosystem under consideration and that cause or are likely to cause economic or environmental harm or harm to human, animal, or plant health” (Beck et al. 2008); adventive (= non-native, nonindigenous) species which threaten ecosystems, habitats, or species (Frank and Thomas (2004). Invasive insects (those that are pests) are by definition a subset of adventive species (Frank and Thomas (2004). According to these definitions, we consider *Harmonia axyridis* as an invasive species; because it causes environmental harm by displacing native coccinellids (see section on *H. axyridis* in Results and Discussion). Exotic natural enemies that have newly arrived to Colombia are herein considered as adventive species.

## Materials and Methods

The specimens were slide-mounted chiefly following the method of Blackman and Eastop (2000). The insects were immersed in a solution of 10% KOH in a glass tube heated in a hot water bath for 5–10 minutes, then cleaned in 1% acetic acid in a Petri dish. The internal content of each specimen was removed using a fine hair brush. Specimens were dehydrated gradually, soaked in 70%, 80% and 95% EtOH for 5–10 minutes respectively. Cleared specimens were placed into Petri dishes with clove oil to remove remaining residues. Each specimen was then placed onto a slide in a drop of Canada balsam, and sealed with a cover slip. Each slide was labeled with the insect's collection data and dried on a hot plate for 3 weeks at 45°C. The specimens were identified as *S. kahawaluokalani* first by TK based on external morphology and host plant information, and later RSC verified this identification based on the cuticular morphology of slide-mounted specimens using the “Key to Lagerstroemia aphids” by Blackman and Eastop (1994).

## Repositories

MECP	Museo de Entomología, Corporación Colombiana de Investigación Agropecuaria, Centro de Investigación Palmira, Palmira, Valle del Cauca, Colombia.
MEFLG	Museo Entomológico Francisco Luis Gallego, Universidad Nacional de Colombia, Sede Medellín, Medellín, Colombia.
UNAB	Museo Entomológico Facultad de Agronomía, Universidad Nacional de Colombia, Sede Bogotá, Bogotá, Cundinamarca, Colombia.

**Material studied.** *Sarucallis kahawaluokalani*. **Colombia:** Valle del Cauca, Palmira, Corporación Colombiana de investigación Agropecuaria (CORPOICA), Centro de investigación Palmira, 03°30'52.8"N, 76°18'58.3"W, 1014 m asl, 20.x.2013, coll. T. Kondo, *ex* on leaves of *Lagerstroemia indica* L. (Lythraceae), 5 slides 10 specimens, catalogue number 813 (3 slides UNAB; 2 slides MEFLG). **Colombia:** San Andrés, Barrio Obrero, 12°34'20.6"N, 81°42'19.9"W, 26 m asl, 27.xi.2013, coll. T. Kondo, *ex* on leaves of *Lagerstroemia indica* L. (Lythraceae), 5 slides 10 specimens (3 slides UNAB; 1 slide MEFLG; 1 slide MECP).

## Results and Discussion

### *Sarucallis kahawaluokalani* (Kirkaldy) (Hemiptera: Aphididae)

**Diagnosis.** According to Bodlah et al. (2013), the crape myrtle aphid can be diagnosed as follows: winged females are yellow or pale green in color (Fig. 1A). Colonies are composed of nymphs and winged females. Alate females with dark longitudinal stripes on head, thorax and apex of leg segments (Fig. 1A). Head and thorax devoid of spinal tubercles; antenna 6 segmented, each segment pigmented at its apex, antennal tubercles feebly developed (Fig. 1A). Processus terminalis 1.5 or less than length of base of antenomere VI. Fore wings with black spots on veins (Fig. 1A). Abdominal segment II with one large bifid medial tubercle, markedly pigmented (Figure 1B). Abdominal lateral tubercles well developed (Fig. 1B). Siphunculi short, dark, anal plate bilobed; cauda knobbed, with 8 or 9 hairs. Nymphs pale to bright yellow, with black spike- or hair-like projections on the abdomen, lacking black spots, but with two large black tubercles on dorsum of abdomen.

*Sarucallis kahawaluokalani* belongs to the tribe Panaphidini in the subfamily Calaphidinae (Favret 2013). It is native to Southeast Asia, but was first described from specimens collected in Hawaii, by Kirkaldy (Herbert and Mizell 2006). The crape myrtle aphid is the most important insect pest of crape myrtle *Lagerstroemia* spp. in the United States and heavy infestations may cause cosmetic damage, although feeding appears to have no long-term effects on plant health or vigor (Herbert and Mizell 2006). *Sarucallis kahawaluokalani* also is commonly known in the scientific literature as *Tinocallis kahawaluokalani* (Kirkaldy, 1907). Until recently, the genus *Sarucallis* Shinji, 1922, was placed as a synonym of *Tinocallis* Matsumura, 1919, by Remaudière and Remaudière (1997), but it was later revived as a separate genus by Quednau (2003). Some junior synonyms of *S. kahawaluokalani* include: *Monellia lagerstroemiae* Takahashi, 1920; *Sarucallis lythrae* Shinji, 1920; and *Tinocallis kahawaluokalani* (Kirkaldy, 1907) (Yovkova and Petrovic-Obradovic 2011).

*Sarucallis kahawaluokalani* is widely distributed and has been reported from Argentina, Brazil, China, Cuba, France, Germany, Greece, Hawaii, Honduras, India, Italy, Japan, Korea, Panama, Spain, United States, and Venezuela (Blackman and Eastop 1994; Carrera and Cermeli 2003; Evans and Halbert 2007; Grillo 2008; Higuchi 1972; Leclant and Renoust 1986; Mier Durante et al. 1995; Peronti and Sousa-Silva 2002; Quiros and Emmen 2006; Szpeiner 2008; Tsitsipis et al. 2007). It is the most important insect pest on *Lagerstroemia* spp. (Herbert and Mizell 2006; Mizell and Schiffhauer 1987). Additionally, *S. kahawaluokalani* is mostly monophagous, monoecious and holocyclic (Lazzari and Zonta-de-Carvalho 2006), feeding mainly on *Lagerstroemia indica* L., but occasionally found on *Eugenia uniflora* L. (Myrtaceae) (Zemora 2009) and *Punica granatum* L. (Lythraceae) (Mizell and Knox 1993). In the USA, *S. kahawaluokalani* is monophagous, feeding exclusively on crape myrtle (Herbert and Mizell 2006). All samples of *S. kahawaluokalani* in Colombia were collected on leaves of *L. indica*.

This is the first report of *S. kahawaluokalani* from continental Colombia and from San Andres Island. San Andres is the main island of the Archipelago of San Andres, Old Providence and Santa Catalina, a southwestern Caribbean State of Colombia, composed of an extensive area of islands, banks and cays in the western Caribbean, located about 700 km northwest of mainland Colombia, and 250 km east of Nicaragua (Geister and Diaz 1997, Hartnoll et al. 2006).

### Other Recent Adventive (Invasive and Non-Invasive) Species in Colombia

In the last decade, there has been an increase in the number of adventive (invasive and non-invasive) species reported from Colombia. Some of the recent invasions besides *S. kahawaluokalani* are discussed below.

#### *Diaphorina citri* Kuwayama, 1908 (Hemiptera: Liviidae)

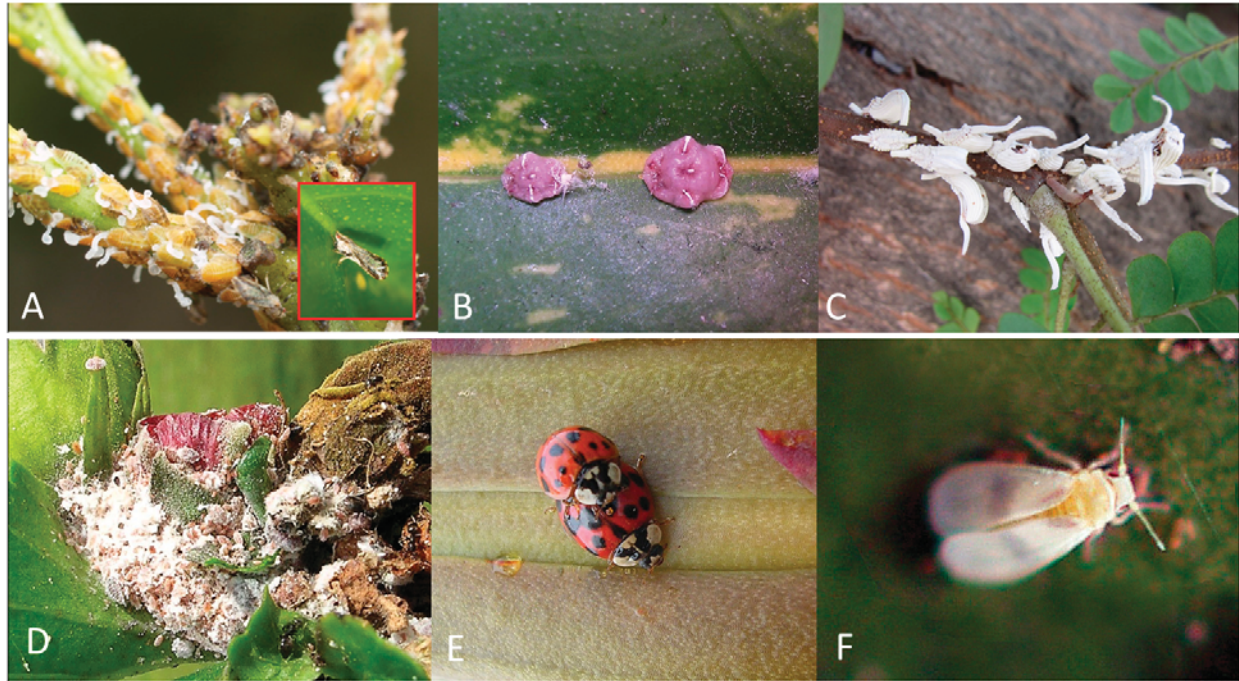
Of all recent invasive species, *Diaphorina citri* (Fig. 2A) has received particular attention because it is a confirmed vector of the phloem limited gram-negative bacterium *Candidatus Liberibacter asiaticus*, one of the pathogens that cause the devastating citrus disease “Huanglongbing” (HLB) or citrus greening disease (Halbert and Manjunath 2004, Grafton-Cardwell et al. 2013). Besides being a vector of HLB, the Asian citrus psyllid, *D. citri*, can cause direct damage to its host plant by sucking large amounts of sap, injecting toxins that cause malformation of leaves and shoots and by inducing sooty molds that grow on the honeydew they produce (Michaud 2004). *Diaphorina citri* has a worldwide distribution; in South America it is known from Argentina, Brazil, Colombia, Paraguay, Uruguay and Venezuela (Augier et al. 2006, Cermeli et al. 2007, EPPO 2005, ICA 2010a). In Colombia, *D. citri* was reported in Colombia for the first time in 2007 and has been recorded since from the States of Antioquia, Atlántico, Bolívar, Caldas, Cauca, Cesar, Córdoba, Cundinamarca, Magdalena, Meta, Norte de Santander, Quindío, Risaralda, Santander, Sucre, Tolima, and Valle del Cauca (ICA 2010a).

#### Scale Insects (Hemiptera: Coccoidea)

A few scale insects also have been reported as invasive in Colombia in recent years. The pink wax scale, *Ceroplastes rubens* Maskell, 1893 (Hemiptera: Coccidae) (Fig. 2B), was reported in 2008 from the State of Valle del Cauca on *Philodendron* sp. and *Aglaonema* sp. (Kondo 2008) and since then it has also been collected on avocado leaves of various cultivars in the coffee growing region of Colombia, which includes the States of Antioquia, Caldas, Risaralda and Valle del Cauca (Kondo et al. 2011). In the Neotropical region, *C. rubens* has been reported from Colombia (Kondo 2008), Guadeloupe (Matile-Ferrero and Étienne 2006), Haiti (Perez-Gelabert 2008), Martinique (Matile-Ferrero and Étienne 2006) and Puerto Rico (Nakahara and Miller 1981). In Colombia, *C. rubens* is commonly found in low numbers and it is not considered a pest (T.K. personal observation).

The Colombian fluted scale, *Crypticerya multicatrides* Kondo and Unruh, 2009 (Hemiptera: Monophlebidae) (Fig. 2C), was reported as an invasive pest on the islands of San Andres and Old Providence in 2010 (ICA 2010b). It likely arrived on the islands of San Andres and Old Providence on infested ornamental plants brought from continental Colombia (Kondo et al. 2012a). *Crypticerya multicatrides* is endemic to mainland Colombia and has only been reported as an invasive species on San Andres and Old Providence islands (ICA 2010b; Kondo et al. 2012a).

The pink hibiscus mealybug (PHM), *Maconellicoccus hirsutus* (Green 1908) (Hemiptera: Pseudococcidae) (Fig. 2D), was originally reported from the States of Atlántico, Cesar, Guajira and Magdalena, on mainland Colombia (Kondo et al. 2008). The oldest known museum specimens of the PHM from mainland Colombia are dated 2006 (Kondo et al. 2008), but the insect was introduced to Colombia in 2003 (M.A. Alterio, pers. comm. *apud* Kondo et al. 2012a). The PHM was reported as an invasive pest on Old Providence Island in 2010 (ICA 2010b) and later from the island of San Andres in 2012 (Kondo et al. 2012a). In the New World, the PHM was first recorded from Grenada in 1993 (Persad 1995), and later spread to many other Caribbean islands, Colombia, USA (California and Florida), and Venezuela



**Figure 2.** Recent invasive species in Colombia. **A.** *Diaphorina citri* Kuwayama. **B.** *Ceroplastes rubens* Maskell. **C.** *Crypticerya multicastrices* Kondo and Unruh. **D.** *Maconellicoccus hirsutus* (Green). **E.** *Harmonia axyridis* (Pallas). **F.** *Singhiella simplex* (Singh). Photos taken by T. Kondo.

(Kondo et al. 2012a). The PHM has continued to spread in South America, being recently reported as an invasive species in neighboring Brazil (Culik et al. 2013; Marsaro-Júnior 2013). Like *C. multicastrices*, *M. hirsutus* probably arrived on the islands of San Andres and Old Providence on infested ornamental plants brought from continental Colombia (Kondo et al. 2012a).

#### The multicolored Asian lady beetle, *Harmonia axyridis* (Pallas, 1773) (Coleoptera: Coccinellidae)

*Harmonia axyridis* (Pallas, 1773) (Coleoptera: Coccinellidae) (Fig. 2E) was reported first from Colombia in 2011 (Brown et al. 2011; Amat-García et al. 2011). However, Kondo and González (2013), based on data of museum insect specimens, indicated that the arrival of *H. axyridis* in Colombia occurred in 1989 or earlier, at least 22 years before the first published reports in 2011, and has expanded its distribution to the States of Antioquia, Caldas, Cauca, Cundinamarca, Nariño, Tolima and Valle del Cauca. In South America, *H. axyridis* is known from Argentina, Brazil, Chile, Colombia, Paraguay, Peru, Ecuador, and Uruguay (González and Kondo 2012; Kondo and González 2013). *Harmonia axyridis* may cause negative impacts by affecting non-target arthropods; fruit production; and as a household invader (Koch and Galvan 2008). Besides being often used as a biological control agent, *H. axyridis* is thought to displace native coccinellids through resource competition wherever it is introduced (Koch et al. 2006). In Colombia, based on observations, it appears that *H. axyridis* has displaced *Hippodamia convergens* Guérin-Ménéville, 1842 and *Coleomegilla maculata* (De Geer, 1775) from a cassava orchard at the International Center for Tropical Agriculture located in the municipality of Palmira (Kondo & Gonzalez 2012).

#### The fig whitefly, *Singhiella simplex* (Singh, 1931) (Hemiptera: Aleyrodidae)

One of the most recent invasive species in Colombia is the fig whitefly, *Singhiella simplex* (Fig. 2F), reported from Colombia on leaves of Cuban laurel *Ficus microcarpa* L. f. in the city of Palmira and on

the weeping fig *F. benjamina* L. (Moraceae), a common tree along the streets of Cali and Palmira, in the State of Valle del Cauca (Kondo and Evans 2012). *Singhiella simplex* is native to the Oriental region (Burma, China and India) and has been introduced to Puerto Rico and the USA (Florida) (Hodges 2007; Evans 2008; Mannion et al. 2008). It has been recorded also from Brazil, Cayman Islands, Jamaica (Jesus et al. 2010; Velasco et al. 2011), and was observed in Israel in 2011 and first recorded in Colombia in 2012 (Kondo and Evans 2012).

### Adventive parasitoids (Hymenoptera: Chalcidoidea)

(Not illustrated)

Invasive species may arrive together with their natural enemies or the natural enemies arrive soon after. The latter has been the case with the natural enemies of the Asian citrus psyllid, *D. citri*, and the PHM, *M. hirsutus*, in Colombia. *Diaphorina citri* was reported in Colombia for the first time in 2007 and its principal parasitoid, the ectoparasitoid *Tamarixia radiata* (Waterston) (Hymenoptera: Eulophidae), was first reported in Colombia in 2011 in the States of Cundinamarca (Ebratt et al. 2011a, b) and Norte de Santander (Ebratt et al. 2011a). Later, in 2012, *T. radiata* was reported for the first time in the State of Valle del Cauca, Colombia, in the municipalities of Palmira, Sevilla and Zarzal (Kondo et al. 2012b). Because of the importance of *D. citri* as a vector of HLB, the control of *D. citri* is a critical component of disease prevention, containment and management. In Reunion Island, where *D. citri* has been introduced, it has been successfully controlled with *T. radiata* introduced from Pakistan (Étienne and Aubert 1980). In Colombia, Ebratt et al. (2011b) reported *T. radiata* parasitizing *D. citri* on orange, tangerine, Tahiti lime and swinglea. Further, Kondo et al. (2012b) collected *T. radiata* from *D. citri* collected on leaves of three species of *Citrus* (Rutaceae): *Citrus reticulata* Blanco, *C. sinensis* (L.) Osbeck cv. Salustiana and *C. latifolia* Tanaka.

The PHM was detected in mainland Colombia in 2003, Old Providence Island in 2010, and San Andres Island in 2012 (see Scale insects' section above). The PHM caused great damage to many plants when it first arrived in Colombia (M. A. Alterio, pers. comm.), but it was later controlled by natural enemies. The parasitoids *Anagyrus kamali* Moursi, 1948, and *Gyranusoidea indica* Shafee, Alam and Agarwal, 1975 (Hymenoptera: Encyrtidae), were first reported from the municipalities of Cúcuta and Los Patios, in the State of Norte de Santander in mainland Colombia in 2012 (Montes-Rodríguez 2012). About the same time, these same species of parasitoids were reported from the island of San Andres (Evans et al. 2012).

### Conclusions

The crape myrtle aphid, *S. kahawaluokalani* is recorded in Colombia for the first time. Other invasive insect species recorded in the last decade in Colombia include: *Ceroplastes rubens*, *Crypticerya multicastrices*, *Diaphorina citri*, *Maconellicoccus hirsutus* and *Singhiella simplex*. Most studies in Colombia, as well as in many other developing countries are focused on agricultural pests, thus many invasive species which attack other plants usually remain unnoticed, e.g., *S. kahawaluokalani* and *S. simplex*. Some recent adventive species in Colombia include natural enemies such as *Anagyrus kamali*, *Harmonia axyridis*, *Gyranusoidea indica* and *Tamarixia radiata*. It is important to continue studies on invasive and adventive species in order to document their global expansion.

### Acknowledgments

Many thanks to Mrs. María Alessandra Alterio Sabino (Dirección Técnica de Cuarentena ICA, Cúcuta) for providing information concerning the damage caused by *M. hirsutus* when it first arrived to mainland Colombia; to Penny Gullan (The Australian National University, Canberra, Australia), to Dr. Ana Lucia Peronti (Universidade Federal de São Carlos), and to anonymous reviewers from the Editorial Board of Insecta Mundi for kindly reviewing the manuscript.

## Literature Cited

- Amat-García, G., E. Amat-García, and E. Ariza-Marín. 2011. Insectos invasores en los tiempos de cambio climático. *Innovación y Ciencia* 18: 45–53.
- Augier, L., G. Gastaminza, M. Lizondo, M. Argañaraz, and E. Willink. 2006. Presencia de *Diaphorina citri* (Hemiptera: Psyllidae) en el Noroeste Argentino (NOA). *Revista de la Sociedad Entomológica Argentina* 65(3–4): 67–68.
- Beck, K. G., K. Zimmerman, J. D. Schardt, J. Stone, R. R. Lukens, S. Reichard, J. Randall, A. A. Cangelosi, D. Cooper, and J. P. Thompson. 2008. Invasive Species Defined in a Policy Context: Recommendations from the Federal Invasive Species Advisory Committee. *Invasive Plant Science and Management* 1: 414–421.
- Blackman, R. L., and V. F. Eastop. 2000. Aphids on the world's crops. An identification and information guide. Wiley; Chichester, UK. 476 p.
- Blackman, R. L., and V. F. Eastop. 1994. Aphids on the world's trees. An identification Guide. CAB International; Wallingford, UK. 987 p.
- Bodlah, I., N. Muhammad, and A. Tasleem. 2013. Morphology and natural enemies of *Tinocallis kahawaluokalani* (Kirkaldy) (Homoptera: Aphididae) from Punjab, Pakistan. *Asian Journal of Agriculture and Biology* 1(1): 13–16.
- Brown, P. M. J., C. E. Thomas, E. Lombaert, D. L. Jeffries, A. Estoup, and L. L. Handley. 2011. The global spread of *Harmonia axyridis* (Coleoptera: Coccinellidae): distribution, dispersal and routes of invasion. *BioControl* 56: 623–641.
- Carrera, A., and M. Cernelli. 2003. Inventario y fluctuación de áfidos alados en Caripe, Venezuela. *Manejo Integrado de Plagas y Agroecología* 69: 58–61.
- Cermeli, M., P. Morales Valle, J. Perozo, and F. Godoy. 2007. Distribución del psílido asiático de los cítricos (*Diaphorina citri* Kuwayama (Hemiptera, Psyllidae) y presencia de *Tamarixia radiata* (Waterston) (Hymenoptera, Eulophidae) en Venezuela. *Entomotrópica* 22(3): 181–184.
- Culik, M. P., D. D. S. Martins, J. S. Z. Junior, M. J. Fornazier, J. A. Ventura, A. L. B. Peronti, and J. C. Zanuncio. 2013. The invasive hibiscus mealybug *Maconellicoccus hirsutus* (Hemiptera: Pseudococcidae) and its recent range expansion in Brazil. *Florida Entomologist* 96(2): 638–640.
- Ebratt-Ravelo, E. E., L. T. Rubio González, V. A. Costa, E. M. Zambrano Gómez, A. P. Castro Ávila, and M. Y. Santamaría Galindo. 2011a. Primer registro de *Tamarixia radiata* (Waterston, 1922) (Hymenoptera: Eulophidae) en Colombia. *Revista Facultad Nacional de Agronomía Medellín* 64(2): 6141–6146.
- Ebratt-Ravelo, E. E., L. T. Rubio-González, V. A. Costa, A. P. Castro-Ávila, E. M. Zambrano-Gómez, and J. E. Ángel-Díaz. 2011b. *Diaphorina citri* (Kuwayama, 1907) and *Tamarixia radiata* (Waterston, 1922) in citrus crops of Cundinamarca, Colombia. *Agronomía Colombiana* 29(3): 487–493.
- Étienne, J., and B. Aubert. 1980. Biological control of psyllid vectors of greening disease on Reunion Island. p. 118–121. *In*: E. C. Calavan, S.M. Garnsey, and L. W. Timmer (Eds). *Proceedings, 8th Conference of the International Organization of Citrus Virologists*, 13–31 May, 1979, Sidney, Australia. University of California Press, Riverside, CA. 297 p.
- European and Mediterranean Plant Protection Organization (EPPO). 2005. Data Sheets on Quarantine Pests: *Diaphorina citri*. Available from: [http://www.eppo.org/QUARANTINE/insects/Diaphorina\\_citri/DIAACI\\_ds.pdf](http://www.eppo.org/QUARANTINE/insects/Diaphorina_citri/DIAACI_ds.pdf) (Accessed on 3 November 2013).
- Evans, G. A. 2008. The whiteflies (Hemiptera: Aleyrodidae) of the world and their host plants and natural enemies. 703 p. <http://www.sel.barc.usda.gov:8080/1WF/World-Whitefly-Catalog.pdf> (Accessed on 21 November, 2013).
- Evans, G. A., and S. E. Halbert. 2007. A checklist of the aphids of Honduras (Hemiptera: Aphididae). *Florida Entomologist* 90(3): 518–523.
- Evans, G., T. Kondo, M. F. Maya Álvarez, L. M. Hoyos Carvajal, J. A. Quiroz, and M. Silva Gómez. 2012. First report of *Anagyrus kamali* Moursi and *Gyranusoidea indica* Shafee, Alam and Agarwal (Hymenoptera: Encyrtidae), parasitoids of the pink hibiscus mealybug *Maconellicoccus hirsutus* (Green) (Hemiptera: Pseudococcidae) on San Andres Island, Colombia. *Revista Corpoica – Ciencia y Tecnología Agropecuaria*. 13(2): 219–222.

- Favret, C. 2013.** Aphid Species File. Université de Montréal. Available from: <http://aphid.speciesfile.org/Common/basic/Taxa.aspx?TaxonNameID=1160221> (Accessed on 1 December 2013).
- Frank, J. H., and M. C. Thomas. 2004.** Invasive insects (adventive pest insects) in Florida. University of Florida, EDIS. Available from: <http://edis.ifas.ufl.edu/pdffiles/IN/IN50300.pdf> (Accessed on 27 February 2013).
- Geister J., and J. M. Diaz. 1997.** A field guide to the oceanic barrier reefs and atolls of the southwest Caribbean (Archipelago of San Andres and Providencia, Colombia). p. 235–262. *In*: H. A. Lessios, I. G. Macintyre (Eds.). Proceedings of the 8th International Coral Reef Symposium Vol. 1. Smithsonian Tropical Research Institute; Panama. 2119 p.
- González, F. G., and T. Kondo. 2012.** Primer registro de la especie invasora *Harmonia axyridis* (Pallas) (Coleoptera: Coccinellidae) en Ecuador. Boletín de la Sociedad Entomológica Aragonesa (S.E.A.) 51: 310.
- Grafton-Cardwell, E. E., L. L. Stelinski, and P. A. Stansly. 2013.** Biology and management of Asian citrus psyllid, vector of the huanglongbing pathogens. Annual Review of Entomology 58: 413–32.
- Green, E. E. 1908.** Remarks on Indian scale insects (Coccidae), Part III. With a catalogue of all species hitherto recorded from the Indian continent. Memoirs of the Department of Agriculture in India, Entomology Series 2: 15–46.
- Grillo R., H. 2008.** *Tinocallis kahawaluocalani* (Kirkaldy) (Hemiptera; Aphididae) en Cuba. Centro Agrícola 35(1): 89–90.
- Hartnoll, R. G., M. S. P. Baine, Y. Grandas, J. James, and H. Atkin. 2006.** Population biology of the black land crab, *Gecarcinus ruricola*, in the San Andres archipelago, western Caribbean. Journal of Crustacean Biology 26(3): 316–325.
- Halbert, S. E., and K. L. Manjunath. 2004.** Asian citrus psyllids (Sternorrhyncha: Psyllidae) and greening disease of citrus: a literature review and assessment of risk in Florida. Florida Entomologist 87: 330–353.
- Herbert, J., and R. F. III. Mizell. 2006.** Crape myrtle Aphid, *Sarucallis kahawaluokalani* (Kirkaldy) (Insecta: Hemiptera: Aphididae). University of Florida, 1–4.
- Higuchi, H. 1972.** A taxonomic study of the subfamily Callipterinae in Japan (Homoptera: Aphididae). Insecta Matsumurana 35(2): 19–126.
- Hodges, G. 2007.** The fig whitefly *Singhiella simplex* (Singh) (Hemiptera: Aleyrodidae): a new exotic whitefly found on *Ficus* species in south Florida. Division of Plant Industry, Florida Department of Agriculture and Consumer Services. Available from: <http://www.freshfromflorida.com/pi/pest-alerts/singhiella-simplex.html> (Accessed on 20 November 2012).
- ICA [Instituto Colombiano Agropecuario]. 2010a.** Plan para el manejo y mitigación del riesgo ocasionado por la cochinilla rosada (*Maconellicoccus hirsutus*) y la chinche acanalada (*Crypticerya multicatrices*) en las islas de San Andrés y Providencia. Subgerencia de protección vegetal dirección técnica de epidemiología y vigilancia fitosanitaria; gerencia seccional San Andrés y Providencia. Julio 2010. 15 p.
- ICA [Instituto Colombiano Agropecuario]. 2010b.** Situación actual de HLB (Huanglongbing) y su vector el psílido asiático de los cítricos (*Diaphorina citri* Kuwayama) en Colombia. Boletín Epidemiológico. 9 p.
- Jesus, L. F. M. De., T. D. Trindade, A. J. Ferreira Jr., F. Racca Filho, and A. F. Lima. 2010.** Registro de uma especie exotica de mosca-branca-do-ficus (Hemiptera: Aleyrodidae) e sua disseminacao no Brasil. Abstract. in: XXIII Congresso Brasileiro de Entomologia. Natal R-N, Brazil.
- Kirkaldy, G. W. 1907.** On some peregrine Aphidae in Oahu (Hem.). Proceedings of the Hawaiian Entomological Society 1: 99–102.
- Koch, R. L., and T. L. Galvan. 2008.** Bad side of a good beetle: the North American experience with *Harmonia axyridis*. BioControl 53: 23–35.
- Koch, R. L., R. C. Venette, and W. D. Hutchinson. 2006.** Invasions by *Harmonia axyridis* (Pallas) (Coleoptera: Coccinellidae) in the Western Hemisphere: Implications for South America. Neotropical Entomology 35: 421–434.
- Kondo, T. 2008.** *Ceroplastes rubens* Maskell (Hemiptera: Coccidae), a new coccid record for Colombia. Boletín del Museo de Entomología de la Universidad del Valle 9 (1): 66–68.

- Kondo, T., and G. Evans. 2012.** *Singhiella simplex* (Singh) (Hemiptera: Aleyrodidae), a new aleyrodid invasive species for Colombia. *Boletín del Museo de Entomología de la Universidad del Valle* 13(2): 31–33.
- Kondo, T., and F. G. González. 2013.** The multicolored Asian lady beetle, *Harmonia axyridis* (Pallas, 1773) (Coleoptera: Coccinellidae), a not so new invasive insect in Colombia and South America. *Insecta Mundi* 0283: 1–7.
- Kondo, T., P. Gullan, and A. A. Ramos Portilla. 2012a.** Report of new invasive scale insects (Hemiptera: Coccoidea), *Crypticerya multicatrices* Kondo and Unruh (Monophlebidae) and *Maconellicoccus hirsutus* (Green) (Pseudococcidae), on the islands of San Andres and Providencia, Colombia, with an updated taxonomic key to iceryine scale insects of South America. *Insecta Mundi* 0265: 1–17.
- Kondo, T., J. A. Muñoz, R. López, J. Reyes, J. Monsalve, and N. C. Mesa. 2011.** Insectos escama y ácaros comunes del aguacate en el Eje Cafetero y el Valle del Cauca, Colombia. Corpoica. Productos, Bogotá, Colombia. 20 p.
- Kondo, T., E. M. Quintero, M. Campuzano, K. A. G. Wyckhuys, and J. Heraty. 2012b.** First report of *Tamarixia radiata* (Waterston) (Hymenoptera: Eulophidae), a parasitoid of the asian citrus psyllid *Diaphorina citri* Kuwayama (Hemiptera: Psyllidae) in the department of Valle del Cauca, Colombia. *Boletín del Museo de Entomología de la Universidad del Valle* 13(1): 48–51.
- Kondo, T., A. A. Ramos-Portilla, and E. V. Vergara-Navarro. 2008.** Updated list of mealybugs and putoids from Colombia (Hemiptera: Pseudococcidae and Putoidae). *Boletín del Museo de Entomología de la Universidad del Valle* 9(1): 29–53.
- Lazzari, S. M. N., and R. C. Zonta-de-Carvalho. 2006.** Modeling egg distribution of *Tinocallis kahawaluokalani* (Kirkaldy) (Hemiptera: Aphididae) on *Lagerstroemia indica* L. (Lythraceae). *Neotropical Entomology* 35(6): 762–768.
- Leclant, F., and M. Renoust. 1986.** Le puceron du *Lagerstroemia* nouveau ravageur pour notre flore. *Phytoma, Défense des Cultures* 375: 49–50.
- Lorenzi, H., and H. M. Souza. 2001.** Plantas Ornamentais no Brasil - arbustivas, herbáceas e trepadeiras. 3a Edição. Instituto Plantarum; Nova Odessa, São Paulo, Brasil. 1120 p.
- Mannion, C., L. Osborne, A. Hunsberger, H. Mayer, and G. Hodges. 2008.** Ficus whitefly: A new pest in South Florida. University of Florida, IFAS Extension Bulletin, August 2008. Available from: [http://miami-dade.ifas.ufl.edu/pdfs/urbanhort/The%20Fig%20Whitefly%20\(AUG2008\)%20Fact%20Sheet.pdf](http://miami-dade.ifas.ufl.edu/pdfs/urbanhort/The%20Fig%20Whitefly%20(AUG2008)%20Fact%20Sheet.pdf) (Accessed on 21 November 2013).
- Marsaro Júnior, A. L., A. L. B. G. Peronti, A. M. Penteado-Dias, E. G. F. Morais, and P. R. V. S. Pereira. 2013.** First report of *Maconellicoccus hirsutus* (Green, 1908) (Hemiptera: Coccoidea: Pseudococcidae) and the associated parasitoid *Anagyrus kamali* Moursi, 1948 (Hymenoptera: Encyrtidae), in Brazil. *Brazilian Journal of Biology* 73(2): 413–418.
- Matile-Ferrero, D., and Étienne, J. 2006.** Cochenilles des Antilles françaises et de quelques autres îles Caraïbes [Hemiptera, Coccoidea]. *Revue Française d'Entomologie* 28(4): 161–190.
- Matsumura, S. 1919.** New species and genera of Callipterinae of Japan. *Transactions of the Sapporo Natural History Society* 7(2): 99–115.
- Michaud, J. P. 2004.** Natural mortality of Asian citrus psyllid (Homoptera: Psyllidae) in Central Florida. *Biological Control* 29(2): 260–269.
- Mier Durante, M. P., R. Santiago Merino, V. Suay Cano, and J. M. Nieto N. 1995.** *Tinocallis kahawaluokalani* (Kirkaldy) (Homoptera: Aphididae) en la Península Ibérica sobre el árbol de Júpiter, *Lagerstroemia indica*. *Boletín de sanidad vegetal. Plagas* 21: 349–35.
- Mizell, R. F. III, and G. W. Knox. 1993.** Susceptibility of crape myrtle, *Lagerstroemia indica* L., to the crape myrtle aphid (Homoptera: Aphididae) in North Florida. *Journal of Entomological Science* 28:1–7.
- Mizell, R. F. III, and D. E. Schiffhauer. 1987.** Seasonal abundance of the crape myrtle aphid, *Sarucallis kahawaluokalani*, in relation to the pecan aphids, *Monellia caryella* and *Monelliopsis pecanis* and their common predators. *Entomophaga* 32: 511–520.
- Montes-Rodríguez, J. M. 2012.** Primer registro de parasitoides de la cochinilla rosada del hibisco, *Maconellicoccus hirsutus* (Hemiptera: Pseudococcidae), en Colombia [First record of parasitoids of the pink hibiscus mealybug, *Maconellicoccus hirsutus* (Hemiptera: Pseudococcidae), in Colombia]. *Revista Colombiana de Entomología* 38(2): 274–275.

- Moursi, A. A. 1948.** Contributions to the knowledge of the natural enemies of mealybugs. 1. Description of two new species of *Anagyrus* (Hymenoptera: Encyrtidae). Bulletin de la Société Fouad Ier d'Entomologie 32: 9–16.
- Nakahara, S., and C. E. Miller. 1981.** A list of the Coccoidea species (Homoptera) of Puerto Rico. Proceedings of the Entomological Society of Washington 83: 28–39.
- Perez-Gelabert, D. E. 2008.** Arthropods of Hispaniola (Dominican Republic and Haiti): a checklist and bibliography. Zootaxa 1831: 1–530.
- Persad, C. 1995.** Preliminary list of host plants of *Maconellicoccus hirsutus* (Green) hibiscus or pink mealy bug in Grenada. Caribbean Agricultural Research and Development Institute; Grenada. 6 p.
- Quednau, F. W. 2003.** Atlas of the Drepanosiphine aphids of the world. Part II: Panaphidini – Panaphidina. Memoirs of the American Entomological Institute (Gainesville) 72: 1–301.
- Quiros, D. I., and D. A. Emmen. 2006.** Diversidad biológica de los áfidos (Hemiptera: Aphididae) de Panamá. Tecnociencia 8(2): 63–75.
- Remaudière, G., and M. Remaudière. 1997.** Catalogue des Aphididae du monde - Catalogue of the world's Aphididae (Homoptera, Aphidoidea). INRA Editions; Paris, France. 437 p.
- Sánchez de Lorenzo-Cáceres, J. M. 2000.** Guía de las plantas ornamentales. Mundi-Prensa; Madrid, Spain. 685 p.
- Shafee, S. A., M. Alam, and M. M. Agarwal. 1975.** Taxonomic survey of encyrtid parasites (Hymenoptera: Encyrtidae) in India. Aligarh Muslim University Publication, Zoological Series on Indian Insect Types 10: 22–23.
- Shinji, G. O. 1922.** New Japanese Aphididae. Dobutsugaku Zasshi (Zoological Magazine) 34: 729–732.
- Singh, K. 1931.** A contribution towards our knowledge of the Aleyrodidae (whiteflies) of India. Memoirs of the Department of Agriculture in India (Entomological Series) 12: 1–98.
- Peronti, A. L. B. G., and C. R. Sousa-Silva. 2002.** Aphids (Hemiptera: Aphidoidea) of ornamental plants from São Carlos, São Paulo state, Brazil. Revista de Biología Tropical 50(1): 137–144.
- STRI Herbarium. 2013.** The Herbarium of the Smithsonian Tropical Research Institute. [Online] [http://biogeodb.stri.si.edu/herbarium/species/19790/?search\\_key=Lagerstroemia+indic](http://biogeodb.stri.si.edu/herbarium/species/19790/?search_key=Lagerstroemia+indic) (Accessed on 20 January 2013).
- Szpeiner, A. 2008.** Aphididae (Hemiptera) on ornamental plants in Córdoba (Argentina). Revista de la Sociedad Entomológica Argentina 67(1–2): 49–56.
- Takahashi, R. 1920.** A new genus and species of aphid from Japan (Hem.). Canadian Entomologist 52: 19–20.
- Tsitsipis, J. A., K. I. Nikos, M. T. John, L. P. Dionyssios, A. D. Apostolos, G. Ioanna, Z. D. Kostas, P. C. Dionyssios, and P. Aristides. 2007.** A contribution to the aphid fauna of Greece. Bulletin of Insectology 60(1): 31–38.
- Velasco, G. D. N., R. G. Moura, E. Berti Filho, and H. T. Z. do Couto. 2011.** Avaliação da infestação por *Singhiella simplex* (Hemiptera: Aleyrodidae) em *Ficus benjamina* no município de São Paulo, SP, Brasil. Revista de Agricultura 86(2): 134–131.
- Yovkova, M., and O. Petrovic-Obradovic. 2011.** *Tinocallis kahawaluokalani* (Kirkaldy, 1907) (Hemiptera, Aphididae) – a new invasive species in Bulgaria. Archives of Biological Science Belgrade 63(3): 879–881.
- Zemora, D. 2009.** Asociación de áfidos (Aphididae) en Costa Rica, su diversidad e interacciones tróficas con especies parasitoides (Braconidae: Aphidiinae) e hiperparasitoides (Hymenoptera). Ph.D. Thesis. Facultad de ciencias. Universidad de Costa Rica. 104 p.

Received January 31, 2014; Accepted February 28, 2014.