

4-28-2017

# Description of the female of *Callichroma magnificum* Napp and Martins, 2009 (Coleoptera: Cerambycidae: Cerambycinae: Callichromatini)

Carlos Taboada-Verona

Universidad de Sucre, cucarronneotropical@gmail.com

Juan Pablo Botero

Universidade Federal do Rio de Janeiro, jp\_bot@yahoo.com

Antonio Santos-Silva

Universidade de São Paulo, toncriss@uol.com.br

Follow this and additional works at: <http://digitalcommons.unl.edu/insectamundi>



Part of the [Ecology and Evolutionary Biology Commons](#), and the [Entomology Commons](#)

Taboada-Verona, Carlos; Botero, Juan Pablo; and Santos-Silva, Antonio, "Description of the female of *Callichroma magnificum* Napp and Martins, 2009 (Coleoptera: Cerambycidae: Cerambycinae: Callichromatini)" (2017). *Insecta Mundi*. 1061.  
<http://digitalcommons.unl.edu/insectamundi/1061>

This Article is brought to you for free and open access by the Center for Systematic Entomology, Gainesville, Florida at DigitalCommons@University of Nebraska - Lincoln. It has been accepted for inclusion in Insecta Mundi by an authorized administrator of DigitalCommons@University of Nebraska - Lincoln.

# INSECTA MUNDI

A Journal of World Insect Systematics

---

0538

Description of the female of  
*Callichroma magnificum* Napp and Martins, 2009  
(Coleoptera: Cerambycidae: Cerambycinae: Callichromatini)

Carlos Taboada-Verona  
Universidad de Sucre  
Cra 28 N° 5-267 Barrio Puerta Roja  
Sincelejo, Colombia

Juan Pablo Botero  
Departamento de Entomologia  
Museu Nacional  
Universidade Federal do Rio de Janeiro  
Rio de Janeiro, RJ, Brazil

Antonio Santos-Silva  
Museu de Zoologia  
Universidade de São Paulo  
São Paulo, SP, Brazil

Date of Issue: April 28, 2017

Carlos Taboada-Verona, Juan Pablo Botero, and Antonio Santos-Silva  
Description of the female of *Callichroma magnificum* Napp and Martins, 2009  
(Coleoptera: Cerambycidae: Cerambycinae: Callichromatini)  
Insecta Mundi 0538: 1–5

ZooBank Registered: urn:lsid:zoobank.org:pub:1250D07A-FA8F-4BCF-86C8-A198656A9389

**Published in 2017 by**

Center for Systematic Entomology, Inc.  
P. O. Box 141874  
Gainesville, FL 32614-1874 USA  
<http://centerforsystematicentomology.org/>

**Insecta Mundi** is a journal primarily devoted to insect systematics, but articles can be published on any non-marine arthropod. Topics considered for publication include systematics, taxonomy, nomenclature, checklists, faunal works, and natural history. **Insecta Mundi** will not consider works in the applied sciences (i.e. medical entomology, pest control research, etc.), and no longer publishes book reviews or editorials. **Insecta Mundi** publishes original research or discoveries in an inexpensive and timely manner, distributing them free via open access on the internet on the date of publication.

**Insecta Mundi** is referenced or abstracted by several sources including the Zoological Record, CAB Abstracts, etc. **Insecta Mundi** is published irregularly throughout the year, with completed manuscripts assigned an individual number. Manuscripts must be peer reviewed prior to submission, after which they are reviewed by the editorial board to ensure quality. One author of each submitted manuscript must be a current member of the Center for Systematic Entomology.

**Chief Editor:** David Plotkin, e-mail: [insectamundi@gmail.com](mailto:insectamundi@gmail.com)  
**Assistant Editor:** Paul E. Skelley, e-mail: [insectamundi@gmail.com](mailto:insectamundi@gmail.com)  
**Head Layout Editor:** Eugenio H. Nearn  
**Editorial Board:** J. H. Frank, M. J. Paulsen, Michael C. Thomas  
**Review Editors:** Listed on the **Insecta Mundi** webpage

**Manuscript Preparation Guidelines and Submission Requirements** available on the **Insecta Mundi** webpage at: <http://centerforsystematicentomology.org/insectamundi/>

**Printed copies (ISSN 0749-6737) annually deposited in libraries:**

CSIRO, Canberra, ACT, Australia  
Museu de Zoologia, São Paulo, Brazil  
Agriculture and AgriFood Canada, Ottawa, ON, Canada  
The Natural History Museum, London, UK  
Muzeum i Instytut Zoologii PAN, Warsaw, Poland  
National Taiwan University, Taipei, Taiwan  
California Academy of Sciences, San Francisco, CA, USA  
Florida Department of Agriculture and Consumer Services, Gainesville, FL, USA  
Field Museum of Natural History, Chicago, IL, USA  
National Museum of Natural History, Smithsonian Institution, Washington, DC, USA  
Zoological Institute of Russian Academy of Sciences, Saint-Petersburg, Russia

**Electronic copies (Online ISSN 1942-1354, CDROM ISSN 1942-1362) in PDF format:**

Printed CD or DVD mailed to all members at end of year. Archived digitally by Portico.  
Florida Virtual Campus: <http://purl.fcla.edu/fcla/insectamundi>  
University of Nebraska-Lincoln, Digital Commons: <http://digitalcommons.unl.edu/insectamundi/>  
Goethe-Universität, Frankfurt am Main: <http://nbn-resolving.de/urn/resolver.pl?urn:nbn:de:hebis:30:3-135240>

**Copyright** held by the author(s). This is an open access article distributed under the terms of the Creative Commons, Attribution Non-Commercial License, which permits unrestricted non-commercial use, distribution, and reproduction in any medium, provided the original author(s) and source are credited. <http://creativecommons.org/licenses/by-nc/3.0/>

**Layout Editor for this article:** Eugenio H. Nearn

Description of the female of *Callichroma magnificum* Napp and Martins, 2009 (Coleoptera: Cerambycidae: Cerambycinae: Callichromatini)

Carlos Taboada-Verona  
Universidad de Sucre  
Cra 28 N° 5-267 Barrio Puerta Roja  
Sincelejo, Colombia  
cucarronneotropical@gmail.com

Juan Pablo Botero  
Departamento de Entomologia  
Museu Nacional  
Universidade Federal do Rio de Janeiro  
Rio de Janeiro, RJ, Brazil  
jp\_bot@yahoo.com

Antonio Santos-Silva  
Museu de Zoologia  
Universidade de São Paulo  
São Paulo, SP, Brazil  
toncriss@uol.com.br

**Abstract.** The female of *Callichroma magnificum* Napp and Martins, 2009 (Coleoptera: Cerambycidae: Cerambycinae: Callichromatini) is described and illustrated for the first time. The geographical distribution of the species is expanded to the Colombian Caribbean and information on the collection site is provided.

**Key Words.** Colombia, Taxonomy, Tropical dry forest

## Introduction

The genus *Callichroma* Latreille, 1816 currently includes 18 species and two subspecies (Monné 2016). Its distribution ranges from Mexico to southern South America, where some species have a wide geographical distribution. In South America, most of the species are present in the Amazon Region and the Atlantic forest (Napp and Martins 2009). Eight species are known from Colombia (Monné 2016). Previously *Callichroma magnificum* Napp and Martins, 2009 was only known from the male holotype. Herein, the female of *C. magnificum* is described and illustrated for the first time, the species geographical distribution is expanded within Colombia and information is provided on the new location where the species was collected.

## Materials and Methods

The specimens were collected using a mercury light trap. Initially, the specimens were identified following the key from Napp and Martins (2009), and then compared with the holotype of *Callichroma magnificum*. Measurements were made using the software tpsDig v. 2.26 and the units are in millimeters (mm). Photographs were taken using a Nikon COOLPIX P510® camera. The specimens are deposited at the Museo Zoológico de la Universidad de Sucre, Sincelejo, Colombia (MZUS). The other acronym used in the text corresponds to Museu de Zoologia, Universidade de São Paulo, São Paulo, Brazil (MZSP).

## Results

### *Callichroma magnificum* Napp and Martins, 2009 (Fig. 1–6)

**Description. Female (Fig. 1–3).** Head, thorax, and elytra bright green-metallic; antennae black; legs black except reddish most of club of pro- and mesofemora (black on apex), and most basal half of metafemora (black on base).

**Head.** Surface glabrous; rugose laterally. Antennal tubercles glabrous at base, punctate at apex. Vertex concave, with microrugosities between antennal tubercles. Frons glabrous, coarsely punctate. Distance between upper eye lobes 0.42 times length of scape; in frontal view, distance between lower eye lobes 0.57 times length of scape. Genae punctate, glabrous. Fronto-clypeal suture indistinct. Clypeus truncated at distal margin, glabrous. Labrum emarginate at distal margin, with tuft of orange setae on sides of anterior region. Mandibles with scattered punctures, glabrous. Maxillary palpomere I widened at apex, with long yellowish setae; maxillary palpomere IV strongly widened at apex; galea with setae, anteriorly forming yellowish tufts. Antennae surpassing elytral apex at base of antennomere X; antennomeres covered with fine pubescence; scape thick, laterally coarsely punctate, dorsally with deep depression on base, apex slightly projected at external margin; antennomere III with longitudinal sulcus; antennomeres IV–XI carinate. Antennal formula (ratio) based on length of antennomere III: scape = 0.62; pedicel = 0.09; IV = 0.82; V = 0.86; VI = 0.87; VII = 0.82; VIII = 0.73; IX = 0.52; X = 0.61; XI = 0.65.

**Thorax.** Prothorax transverse; sides with rounded projection close to distal margin, and large conical tubercle at about middle, anterior margin of pronotum with black setae. Pronotal disc transversely striate, with median longitudinal sulcus, shallowly depressed on each side of sulcus. Prosternum with transverse wrinkles and short yellow setae, primarily laterally. Ventral side of mesothorax finely, sparsely punctate, with nearly inconspicuous pubescence. Metasternum with sparse punctures, from each one emerges white setae, with short, fine, dense, white pubescence laterally. Metepisternum with fine pubescence. Scutellum with shallow wrinkles. **Elytra.** Each elytron with two longitudinal striae, beginning at anterior region and reaching apical third; apex of elytra rounded, with black setae. **Legs.** Pro- and mesofemora pedunculate, finely punctate on ventral face; metafemora dilated; metatibiae flattened, with short black setae. Pro- and mesotibiae with fine yellow pubescence, laterally carinate. **Abdomen.** Urosternites sparsely punctate, laterally with short whitish setae. Apex of urosternite VI truncate.

**Dimensions, female (in mm).** Total length, 33.94; prothorax: length, 5.85; anterior width, 5.97; posterior width, 5.05; widest prothoracic width, 7.76; humeral width, 7.39; elytral length, 23.73.

**Specimens examined.** COLOMBIA, *Sucre*: Chalán (09°34'23.7"N / 75°19'27.6"W), 1 male and 1 female, 1.VII.2016, "Trampa de luz", P. Álvarez col. (MZUS); *Boyacá*: Territorio Vazquez, holotype, male, II. 1991, J. Urbina col. (MZSP).

**Remarks.** Previously *Callichroma magnificum* was known only by the male holotype (deposited at MZSP collection; Fig. 4–6), and recorded from the Colombian department of Boyacá, in the center of the country. Examination of the male holotype showed that the most important differences between male and female of *C. magnificum* are: antennae much longer in male, in the holotype, 3.95 times elytral length, reaching elytral apex at basal quarter of the antennomere VII (notably shorter in female); abdomen with six urosternites in male (five in female); and distal margin of urosternite V strongly concave (subtruncate in female).

According to Napp and Martins (2009), *C. magnificum* is similar to *C. euthalium* Bates, 1874, but differs primarily by the pronotum notably transversely striate (micro-rugose and very finely striate in *C. euthalium*).

Herein is added a new department record from Sucre, in the northern area (Fig. 7). According to Holdridge (1979), the collection site may be characterized as tropical dry forest. The municipality of Chalán features a mountainous landscape and a bimodal rainfall regime; the annual averages of

temperature and relative humidity are 26.8 °C and 77%, respectively; precipitation fluctuates between 1,000 and 1,200 mm per year, the weather is warm and dry (Aguilera 2005).

### Acknowledgments

We are grateful to Eugenio H. Nearn (Purdue Entomological Research Collection, West Lafayette, IN, USA) and Marcela Monné (Departamento de Entomologia, Universidade Federal do Rio de Janeiro, Brasil) for review of an earlier version of this manuscript. We also thank Pedro Álvarez (Universidad de Sucre), who sent the specimen for study.

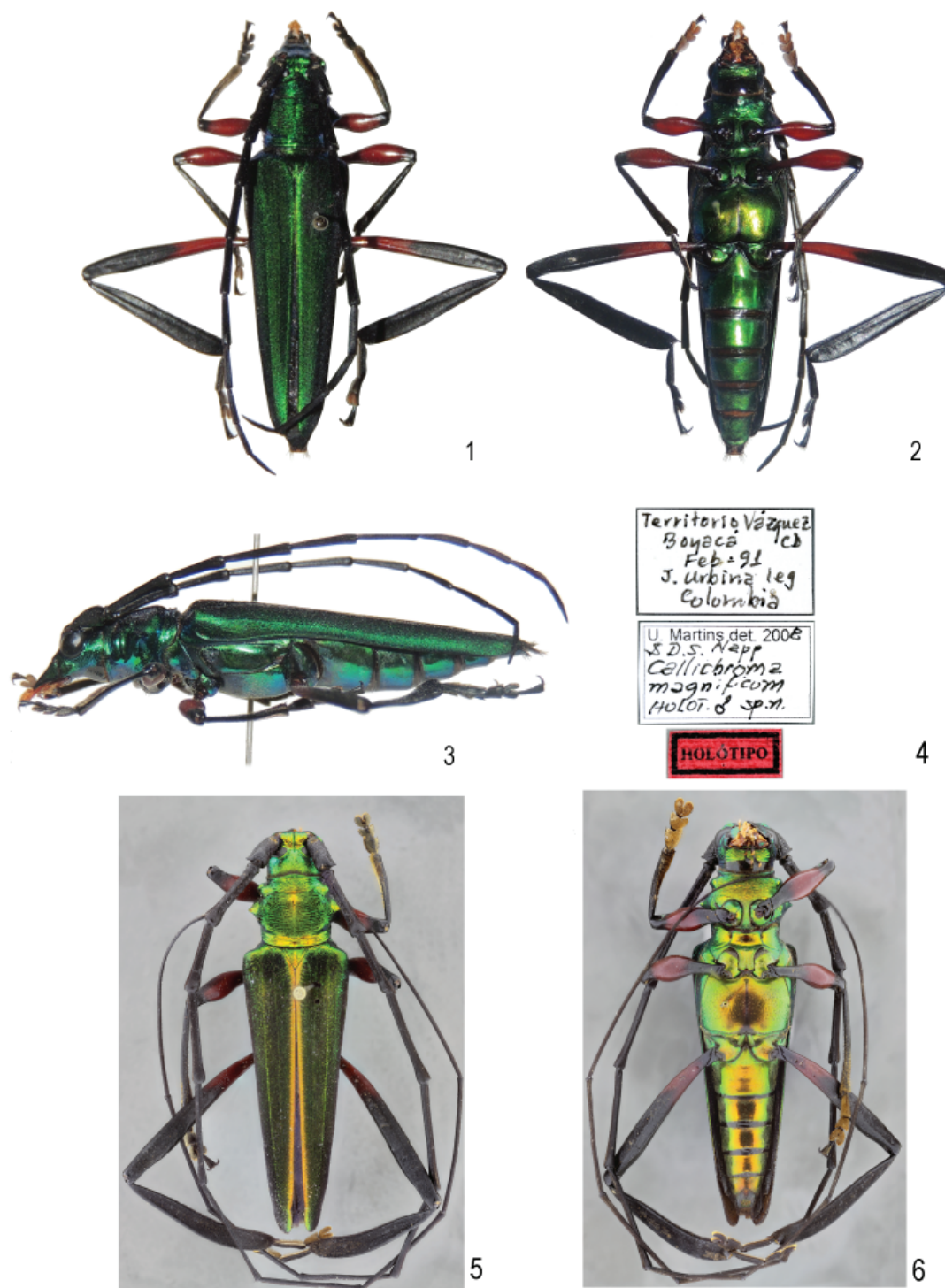
### Literature Cited

- Aguilera, M. 2005.** La economía del departamento de Sucre: ganadería y sector público. Centro de Estudios Económicos Regionales del Banco de la República. Cartagena, Colombia. 129 p.
- Holdridge, L. 1979.** Ecología basada en zonas de vida. Instituto Interamericano de Ciencias Agrícolas. San José, Costa Rica. 206 p.
- Monné, M. A. 2016.** Catalogue of the Cerambycidae (Coleoptera) of the Neotropical Region. Part I. Subfamily Cerambycinae. (Available at ~ <http://www.cerambyxcat.com/>. Last accessed November 2016.)
- Napp, D. S., and U. R. Martins. 2009.** Tribo Callichromatini, p. 223–353. *In*: U. R. Martins (ed.). Cerambycidae Sul-americanos (Coleoptera). Taxonomia. Vol. 3. Sociedade Brasileira de Entomologia; São Paulo. vi + 373 p.

**Received March 9, 2017; Accepted March 21, 2017.**

**Review Editor Michael L. Ferro.**





**Figures 1–6.** *Callichroma magnificum*. 1–3, Habitus, Female. 1) Dorsal view. 2) Ventral view. 3) Lateral view. 4–6, Holotype, male. 4) Labels. 5) Dorsal view. 6) Ventral view.

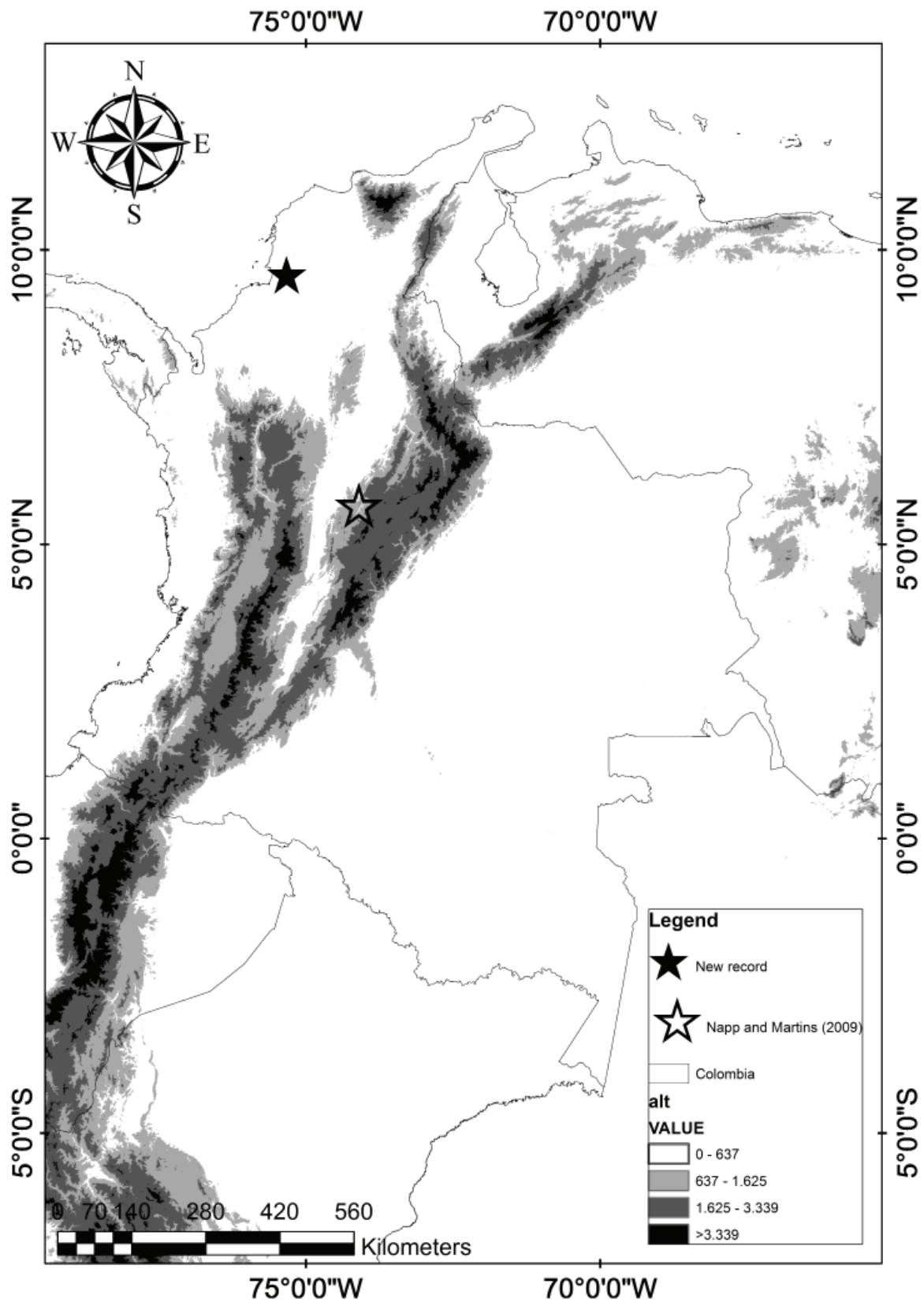


Figure 7. Geographical distribution of *Callichroma magnificum*.



