

University of Nebraska - Lincoln

DigitalCommons@University of Nebraska - Lincoln

USDA National Wildlife Research Center - Staff
Publications

U.S. Department of Agriculture: Animal and
Plant Health Inspection Service

10-2012

Survey of gastrointestinal parasite infection in African lion (*Panthera leo*), African wild dog (*Lycaon pictus*) and spotted hyaena (*Crocuta crocuta*) in the Luangwa Valley, Zambia

Are R. Berentsen

USDA National Wildlife Research Center, Are.R.Berentsen@aphis.usda.gov

Matthew S. Becker

Montana State University - Bozeman, matt@zambiacarnivores.org

Heather Stockdale-Walden

University of Florida College of Veterinary Medicine, hdstockdale@ufl.edu

Wigganson Matandiko

Montana State University - Bozeman

Rachel McRobb

South Luangwa Conservation Society

See next page for additional authors

Follow this and additional works at: https://digitalcommons.unl.edu/icwdm_usdanwrc



Part of the [Life Sciences Commons](#)

Berentsen, Are R.; Becker, Matthew S.; Stockdale-Walden, Heather; Matandiko, Wigganson; McRobb, Rachel; and Dunbar, Mike R., "Survey of gastrointestinal parasite infection in African lion (*Panthera leo*), African wild dog (*Lycaon pictus*) and spotted hyaena (*Crocuta crocuta*) in the Luangwa Valley, Zambia" (2012). *USDA National Wildlife Research Center - Staff Publications*. 1100.
https://digitalcommons.unl.edu/icwdm_usdanwrc/1100

This Article is brought to you for free and open access by the U.S. Department of Agriculture: Animal and Plant Health Inspection Service at DigitalCommons@University of Nebraska - Lincoln. It has been accepted for inclusion in USDA National Wildlife Research Center - Staff Publications by an authorized administrator of DigitalCommons@University of Nebraska - Lincoln.

Authors

Are R. Berentsen, Matthew S. Becker, Heather Stockdale-Walden, Wigganson Matandiko, Rachel McRobb, and Mike R. Dunbar

Survey of gastrointestinal parasite infection in African lion (*Panthera leo*), African wild dog (*Lycaon pictus*) and spotted hyaena (*Crocuta crocuta*) in the Luangwa Valley, Zambia

Are R. Berentsen^{1*}, Matthew S. Becker², Heather Stockdale-Walden³, Wigganson Matandiko⁴, Rachel McRobb⁵ & Mike R. Dunbar^{1†}

¹USDA/APHIS/WS/National Wildlife Research Center, 4101 LaPorte Avenue, Fort Collins, Colorado, U.S.A., 80521

²Zambian Carnivore Programme, P.O. Box 80, Mfuwe, Eastern Province, Zambia / Department of Ecology, Montana State University, Bozeman, Montana, U.S.A., 59717

³University of Florida College of Veterinary Medicine, Department of Infectious Diseases and Pathology, 1945 SW 16th Avenue, V2-155, Gainesville, Florida, U.S.A., 32608.

⁴Zambia Wildlife Authority, Private Bag 1, Chilanga, Zambia / Zambia Carnivore Programme, P.O. Box 80, Mfuwe, Eastern Province, Zambia / Department of Ecology, Montana State University, Bozeman, Montana, U.S.A., 59717

⁵South Luangwa Conservation Society, Mfuwe, Zambia

Received 31 July 2012. Accepted 4 December 2012

Little is known about gastrointestinal parasite infections in large carnivores in Africa and what is available is largely from East Africa. We collected faecal samples from nine spotted hyaenas (*Crocuta crocuta*), 15 lions (*Panthera leo*) and 13 African wild dog (*Lycaon pictus*) from Luangwa Valley, Zambia. The most common gastrointestinal parasites found were *Isoospora* spp., *Spirometra* sp., Taeniidae and *Sarcosystis* spp. Twenty-eight per cent of all samples were co-infected with *Spirometra* sp. and Taeniidae, with co-infection rates highest among lions (67%). Thirty-three per cent (3/9) of spotted hyaenas were infected with *Isoospora* sp. Ninety-two per cent (12/13) of wild dog were infected with *Sarcosystis*, similar to results from studies in South Africa. One lion was infected with a parasite whose morphology suggested *Strongyloides* sp., not previously been reported in lions. Samples from one lion and two spotted hyaenas yielded no gastrointestinal parasites. Overall, parasite species were consistent with those found from studies in other regions of Africa and are likely a result of ingesting infected prey. To our knowledge this study provides the most comprehensive survey of gastrointestinal parasite infection in large carnivores from this region of Africa to date and provides baseline data for future studies.

Key words: *Crocuta crocuta*, gastrointestinal parasites, *Lycaon pictus*, *Panthera leo*, Zambia.

Given their large area requirements, inherently low densities, and susceptibility to human edge effects, large carnivore populations are in decline throughout Africa (Woodroffe & Ginsberg

1998). However, an additional contributing factor is the influence of wildlife diseases. Some diseases, such as canine distemper and rabies, have received considerable attention (Cleaveland & Dye 1995; Kat *et al.* 1996; Creel & Creel 2002; Van de Bildt *et al.* 2002, among others). However, the prevalence of macroparasite infections in large carnivores has been largely overlooked. The interaction between parasite prevalence and intensity, physiological condition, and susceptibility to disease is well demonstrated in some species (see Samuel *et al.* 2001 for a review), but poorly understood in large carnivores. As these species are increasingly confined to fragmented landscapes in and around protected areas, obtaining a baseline of parasite loads can assist with disease management and conservation efforts.

Parasitic infections may reduce competitive fitness (Brassard *et al.* 1982; Scott 1988), influence population cycles (Hudson *et al.* 1998) and regulate host population abundance (Anderson & May 1978). Often, parasitic infections tend to be over dispersed, to where many individual hosts have low parasite intensities and few individuals have high intensities of parasites (Scott 1988; Müller-Graf 1995; Junker *et al.* 2008). Thus, many animals may maintain low levels of infection whereas few actually succumb to disease. Furthermore, some wild canids have evolved to cope with a certain level of chronic parasitic infection that has little or no adverse health effects (Kennedy-Stoskopf 2003).

*Author for correspondence.

E-mail: are.r.berentsen@aphis.usda.gov

†Present address: 983 Highway 93 N, Carmen, Idaho, 83462, U.S.A.

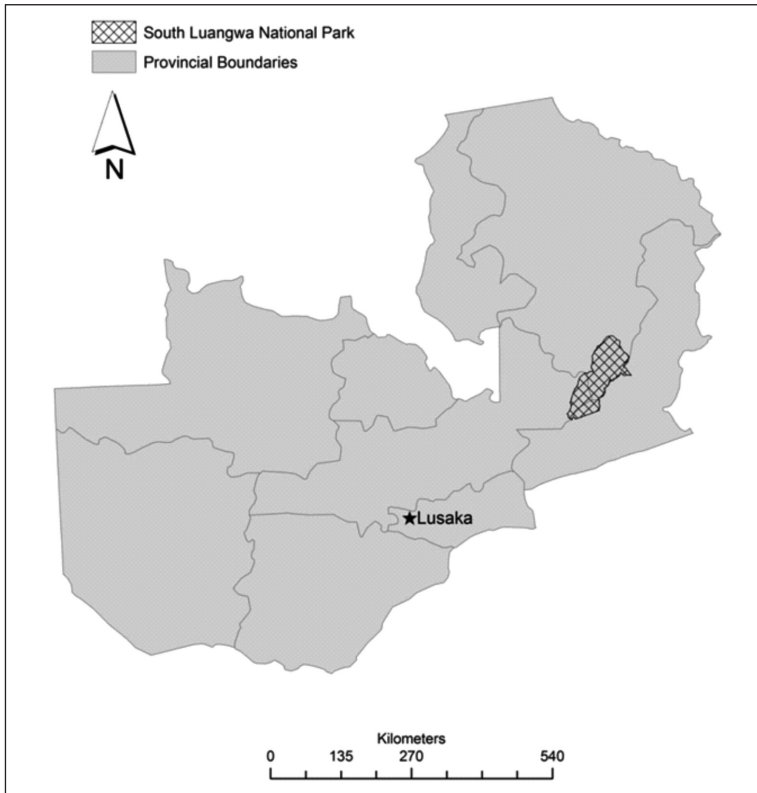


Fig. 1. Location of South Luangwa National Park, Zambia.

Data on internal parasite infections in large African carnivores are scant. Historically samples have been collected from captive animals (Geraghty *et al.* 1982; Ghoshal *et al.* 1988) or opportunistically from dead wild animals (LeRoux 1958; Rodgers 1974; Bwangamoi *et al.* 1990). Little information is available from live, free-ranging populations and what has been reported comes primarily from studies in East Africa (Müller-Graf 1995; Müller-Graf *et al.* 1999; Bjork *et al.* 2000; Engh *et al.* 2003; Hüttner *et al.* 2009). And while research into this topic has increased in recent years in southern Africa (Smith & Kok 2006; Flacke *et al.* 2010), little is known regarding parasite prevalence from free-ranging populations in much of the region. With approximately a third of its area managed for wildlife, Zambia still has viable populations of large carnivores such as lions (*Panthera leo*), African wild dogs (*Lycaon pictus*), and spotted hyaenas (*Crocuta crocuta*), particularly in the Luangwa valley. Wildlife populations in this region have been exposed to disease epizootics historically, primarily anthrax (*Anthraxis bacillus*) (Turnbull *et al.* 1991). Nevertheless little information exists

from Zambia on gastrointestinal parasites in carnivores beyond an early report from a private ranch in the Chinsali District in the former Northern Rhodesia (LeRoux 1958) and, more recently, a report of *Giardia duodenalis* in wild dogs (Ash *et al.* 2010).

Our objective was to obtain current data on gastrointestinal parasite infections in populations of African lions, spotted hyaenas and African wild dogs in the Luangwa valley, Eastern Zambia. To the best of our knowledge this study is the most comprehensive investigation into gastrointestinal parasite infections in large carnivores for this region and provides baseline information for future studies as well as valuable information on carnivore health.

Samples were collected in South Luangwa National Park (SLNP) and Lupande Game Management Area, which collectively cover approximately 13 775 km² (Fig. 1). The area is a mosaic of edaphic grassland, deciduous riparian forest, mopane (*Colophospermum mopane*) woodland, scrub woodland, miombo woodland, dry deciduous forest, and undifferentiated woodland

Table 1. Prevalence of parasite ova, oocysts and larvae in the faeces of three carnivore species from the Luangwa Valley, Zambia.

Parasite	Prevalence		
	No. + Hyaenas (%)	No. + Lions (%)	No. + Wild dogs (%)
Unknown larvated nematode ova	2*(22)	2*(13)	0(0)
Unknown trematode ova	0(0)	1(7)	0(0)
<i>Spirometra</i> sp.	2(22)	13(87)	1(8)
<i>Isospora</i> sp.	3(33)	0(0)	1(8)
<i>Dipylidium</i> sp.	2(22)	0(0)	0(0)
Taeniidae	1(11)	12(80)	3(23)
<i>Aelurostrongylus</i> spp. larvae	0(0)	3(20)	0(0)
<i>Toxocara</i> sp.	0(0)	2(13)	0(0)
<i>Sarcocystis</i> sp.	0(0)	1(7)	12(92)
No parasite ova seen	2(22)	1(7)	0(0)

*Size and features suggest spirurid nematode.
Characteristic single-folded larva suggest *Strongyloides* sp.

(Astle *et al.* 1969; White 1983; Astle 1988). The Luangwa River forms the eastern border for most of the park. A more detailed description can be found in Becker *et al.* (in press).

Faecal samples from carnivores were obtained opportunistically from 2009–2011 following observation of defecation or by direct collection during chemical immobilizations for snare removal or radio-collaring as part of ongoing studies of all three species. Carnivores were immobilized with a combination of tiletamine/zolazepan (Zoletil) and medetomidine (Domitor, Zolapene; Koch *et al.* 2006) and reversed with Atipamezole. All immobilization procedures followed animal welfare standards and protocols required by the Department of Veterinary and Livestock Development and the Zambia Wildlife Authority (ZAWA).

Faecal samples were fixed in neutral buffered 10% formalin or dried and refrigerated until shipped. Those faecal samples fixed in 10% formalin were evaluated using both Sheather's centrifugal flotation and centrifugal sedimentation methods (Zajac & Conboy 2012). Dried faecal samples were rehydrated in tap water prior to flotation and evaluated by Sheather's centrifugal flotation methods. Modified McMaster's technique was used to calculate eggs per gram (EPG) of faeces for 12 formalin-fixed samples with sufficient amounts of faecal material (>1.0 g of faeces) (Zajac & Conboy 2012). Remaining formalin-fixed samples containing sufficient ova counts after examination by faecal flotation or sedimentation were extrapolated to one gram to obtain theoretical EPG values (data not shown). Adult stages of parasites were not available. Samples only con-

tained parasite ova, oocysts and/or larvae, therefore we were only able to identify most parasites to genus.

We obtained fresh faecal samples from nine hyaenas, 13 lions and seven wild dogs. Dried faecal samples from three lions (one dried faecal sample was from an individual lion from which fresh samples were also obtained) and six wild dogs were also examined (Table 1). No parasite ova, oocysts or larvae were recovered from two hyaenas and one lion.

Numerous *Isospora* spp. oocysts were recovered from three hyaenas. Unknown larvated nematode ova were recovered from two hyaenas, and *Spirometra* sp. and *Dipylidium* sp. ova were also recovered from two hyaenas. Taeniid ova were observed in one hyaena faecal sample. *Isospora* spp. oocysts have been reported in previous surveys of spotted hyaenas (Engl *et al.* 2003). In their report, oocysts were consistent with *Isospora felis* or *I. leonina*, at 35 μm in size. The *Isospora* spp. oocysts found in the spotted hyaenas in our survey were slightly smaller ($25.3 \times 19.8\text{--}23 \mu\text{m}$) or larger ($45.1 \times 22 \mu\text{m}$) than previous findings and may represent two species based on our measurements. The unknown larvated nematode ova recovered from two hyaenas was most likely a spirurid based on size ($36.5 \times 16.5 \mu\text{m}$) and the characteristic thick outer shell. Spirurid ova of similar size have been previously reported in spotted hyaenas as consistent with *Spirocerca lupi* (Engl *et al.* 2003) and *Cylicospirura subequalis* (Round 1968). *Spirometra* sp. ($60.5 \times 30.8 \mu\text{m}$) and *Dipylidium* sp. (packet: $104.5 \mu\text{m}$; ovum: $39.4 \mu\text{m}$) ova were also recovered, both of which have been

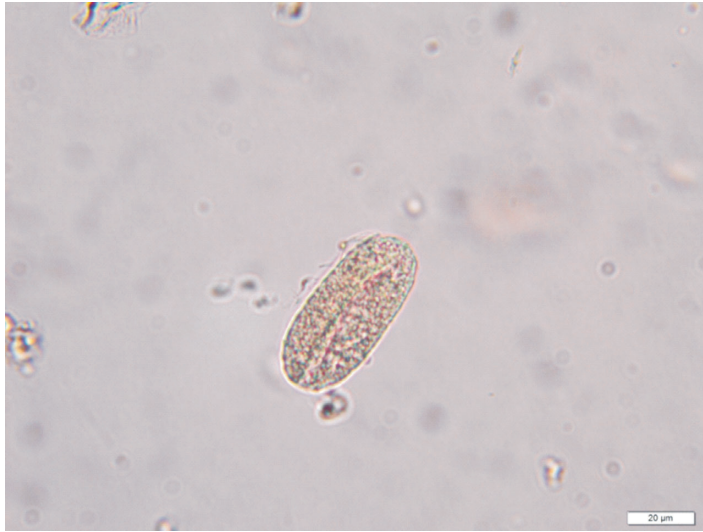


Fig. 2. Unknown nematode egg found in lion faecal sample. Morphology suggests *Strongyloides*.

previously found in spotted hyaenas (Engh *et al.* 2003; Round 1968). Overall, *Spirometra pretoriensis* is the most common species recovered from hyaenas (Müller-Graf 1995). Additionally, taeniid ova (34.1 μm) were observed in a single hyaena faecal sample. Reported taeniid species in spotted hyaenas include *Echinococcus granulosus*, *Taenia crocutae*, *T. hyaenae* and *T. serialis* (Round 1968; Nelson *et al.* 1965).

When examining the lion faecal samples, *Spirometra* sp. ova were recovered from 13 samples, as well as Taeniid ova, which were recovered from 12 samples. Unknown larvated nematode ova were found in two lion faecal samples and unknown trematode ova were recovered from one lion faecal sample. Larvae of *Aelurostrongylus* spp. were found in three lion faecal samples. Additionally, *Toxocara* sp. ova were observed in two lion samples and a single lion sample contained *Sarcocystis* sp. sporocysts. The most prevalent parasite ova recovered from lions was *Spirometra* sp., which is a common finding (Round 1968; Müller-Graf 1995; Bjork *et al.* 2000) and generally thought to be *Spirometra theileri*. A single report indicated *Spirometra okumurai* was recovered from the intestine of one of six lions examined in southern Tanzania (Rodgers 1974). Taeniid cestodes were the second most common parasite found in our surveyed lions. Previous reports of taeniid species in lions suggests these ova could be *Taenia regis*, *T. simba*, *T. gonyamai*, *T. taeniaformis*, *T. hydatigena* or *Echinococcus granulosus felidis* (Nelson *et al.* 1965; Round 1968; Rodgers 1974; Young

1975; Jooste 1990; Müller-Graf 1995). The larvated nematode ova, based on size (50.6 \times 22 μm) and evidence of a single-folded larva is most likely a *Strongyloides* species, not previously reported in lions (Fig. 2).

Unknown trematode ova were also recovered from a single lion faecal sample (Fig. 3). It is not clear whether this is a spurious finding or true parasite of the lion. Documentation of trematode ova recovered from lion faeces is rare, and the size (74.8 \times 49.5 μm) and morphology of the trematode ova found in our survey does not correspond with previously reported findings which include *Pharyngostomum cordatum* or Paramphistomatidae (Round 1968; Müller-Graf 1995; Bjork *et al.* 2000). Both *Toxocara cati* and *T. canis* have been previously reported in lions (Round 1968; Müller-Graf 1995; Bjork *et al.* 2000) but the average size of the *Toxocara* sp. ova recovered in this survey (76.5 \times 58 μm) is consistent with *T. cati*. *Sarcocystis* sp. is another commonly reported parasite found in lion faecal samples (Müller-Graf 1995; Bjork *et al.* 2000). The *Sarcocystis* sp. sporocysts in this survey were approximately 12.1 \times 7.7 μm in size, corresponding to previous findings. Larvae are often recovered in lion faecal samples, and are most commonly *Ollulanus tricuspis* or *Aelurostrongylus* spp. (Round 1968; Müller-Graf 1995; Bjork *et al.* 2000). The larval stages recovered from lion faeces sampled in this survey had the characteristic kinky tail of *Aelurostrongylus* spp., morphologically distinct from *O. tricuspis*.

Nearly all of the wild dog faecal samples, 12 of



Fig. 3. Unknown trematode egg found in lion faecal sample.

13 (92%), contained *Sarcocystis* sp. sporocysts. Taeniid ova were recovered from three wild dog samples, followed by *Spirometra* sp. ova and *Isospora* sp. oocysts each found in one wild dog faecal sample. The most prevalent parasite observed in the faeces of wild dogs was the sporocysts of *Sarcocystis* sp., which was also reported in 100% of wild dogs surveyed in South Africa (Flacke *et al.*, 2010). Taeniid ova (32–36 µm) were also recovered from the wild dog faecal samples. Several taeniid species have been reported in wild dogs, including *Echinococcus longimanubris*, *E. granulosus*, *E. granulosus lyacontus*, *Taenia hyaenae*, *T. brauni*, *T. lycaontis* or *T. pisiformis* (Round 1968; Jooste 1990). *Spirometra* sp. ova was found in a single wild dog faecal sample and is most likely *Spirometra pretoriensis* based on previous reports from wild dogs in the Congo (Round 1968). Oocysts of *Isospora* spp. were also observed in one wild dog faecal sample, a genus recently identified in wild dogs from KwaZulu-Natal, South Africa (Flacke *et al.* 2010).

Forty-three per cent (16/37) of the animals sampled were co-infected with ≥ 2 parasite species. Co-infection with multiple parasites was common in lions with 80% (12/15) of all lions sampled co-infected. Co-infection was less common in hyaenas and wild dogs with 3/9 (33%) of hyaenas and 2/13 (15%) wild dogs co-infected. The most common parasites responsible for co-infection were *Spirometra* sp. and Taeniida with 27% (10/37) of all animals sampled co-infected with these two organisms.

Our results are consistent with reports from other regions of Africa regarding the prevalence and diversity of parasites recorded for lions, wild dogs and spotted hyaenas. The source of these parasites is likely from ingesting infected prey, although exactly which prey is responsible for individual parasites is unknown. Future research on this topic could provide valuable information on predator-prey dynamics and interspecific parasite transmission.

The authors wish to thank the Zambia Wildlife Authority and Department of Veterinary and Livestock Development for their permission and collaboration. Funding was provided by the Worldwide Fund for Nature-Netherlands and Painted Dog Conservation, Inc. Thanks to P. Bouley, C. Chirwa, E. Droge, C. Harrison, T. Mweetwa, F. Otten and E. Rosenblatt for field assistance.

REFERENCES

- ANDERSON, R.M. & MAY, R.M. 1978. Regulation and stability of host-parasite population interactions: I. Regulatory processes. *Journal of Animal Ecology* **47**: 219–247.
- ASH, A., LYMBERY, A., LEMON, J., VIATLI, S. & THOMPSON, R.C.A. 2010. Molecular epidemiology of *Giardia duodenalis* in an endangered carnivore – the African painted dog. *Veterinary Parasitology* **174**: 206–212.
- ASTLE, W.L. 1988. Republic of Zambia, South Luangwa National Park Map, landscape and vegetation. Lovell Johns, Oxford.
- ASTLE, W.L., WEBSTER, R., LAWRENCE, C.J. 1969. Land classification for management planning in the Luangwa valley of Zambia. *Journal of Applied Ecology* **6**: 143–169.

- BECKER, M.S., WATSON, F., DROGE, E., LEIGH, K., CARLONS, R. & CARLSON, A.A. 2013. Estimating past and future male loss in three Zambian lion populations. *Journal of Wildlife Management* **77**: 128–142.
- BJORK, K.E., AVERBECK, G.A. & STROMBERG, B.E. 2000. Parasites and parasite life stages of free ranging wild lions (*Panthera leo*) of northern Tanzania. *Journal of Zoo and Wildlife Medicine* **31**: 56–61.
- BRASSARD, P., RAU, M.E. & CURTIS, M.A. 1982. Parasite induced susceptibility to predation in diplostomiasis. *Parasitology* **85**: 495–501.
- BWANGAMOI, O., ROTTCHER, D. & WEKESA, L. 1990. Rabies, microbrennitis and sarcocystis in a lion. *Veterinary Record* **127**: 411.
- CLEAVELAND, S. & DYE, C. 1995. Maintenance of a microparasite infecting several host species: rabies in the Serengeti. *Parasitology* **111**: S33–S47.
- CREEL, S. & CREEL, N.M. 2002. Infectious diseases. In: *The African Wild Dog: Behavior, Ecology and Conservation*, pp. 269–287. Princeton University Press, Princeton, New Jersey, U.S.A.
- ENGH, A.L., NELSON, K.G., PEEBLES, R., HERNANDEZ, A.D., HUBBARD, K.K. & HOLEKAMP, K.E. 2003. Coprologic survey of parasites of spotted hyenas (*Crocuta crocuta*) in the Masai Mara National Reserve, Kenya. *Journal of Wildlife Diseases* **39**: 224–227.
- FLACKE, G., SPIERING, P., COOPER, D., GUNTHER, M.S., ROBERTSON, I., PALMER C. & WARREN, K. 2010. A survey of internal parasites in free-ranging African wild dogs (*Lycaon pictus*) from KwaZulu-Natal, South Africa. *South African Journal of Wildlife Research* **40**: 176–180.
- GERAGHTY, V., MOONEY, J. & PIKE, K. 1982. A study of parasitic infections in mammals and birds at the Dublin Zoological Gardens. *Veterinary Research Communications* **5**: 343–348.
- GHOSHAL, S.B., GARG, U.K., MISARAULIA, K.S. & JAIN, P.C. 1988. Helminth parasites in zoo animals of Kamla Nehru Park, Indore (MP). *Livestock Adviser* **13**: 34–36.
- HUDSON, P.J., DOBSON A.P. & NEWBORN, D. 1998. Prevention of population cycles by parasite removal. *Science* **282**: 2256–2258.
- HÜTTNER, M., SIEFERT, L., MACKENSTEDT, U. & ROMIG, T. 2009. A survey of *Echinococcus* species in wild carnivores and livestock in East Africa. *International Journal for Parasitology* **39**: 1269–1276.
- JOOSTE, R. 1990. A checklist of the helminth parasites of the larger domestic and wild mammals of Zimbabwe. *Transactions of the Zimbabwe Scientific Association* **64**: 15–32.
- JUNKER, K., DEBUSHO, L. & BOOMKER, J. 2008. The helminth community of helmeted guineafowls *Numida meleagris* (Linnaeus, 1758), in the north of Limpopo Province, South Africa. *Onderstepoort Journal of Veterinary Research* **75**: 225–235.
- KAT, P.W., ALEXANDER, K.A., SMITH, J.S. RICHARDSON, J.D. & MUNSON, L. 1996. Rabies among African wild dogs (*Lycaon pictus*) in the Masai Mara, Kenya. *Journal of Veterinary Diagnostic Investigation* **8**: 420–426.
- KENNEDY-STOSKOPE, S. 2003. Canidae. In: *Zoo and Wild Animal Medicine*, (eds) M.E. Fowler & R.E. Miller, 5th edn, pp. 482–491. W.B. Saunders, St. Louis, MO.
- KOCK, M.D., MELTZER, D. & BURROUGHS, R. 2006. *Chemical and Physical Restraint of Wild Animals*. IWVS (Africa), Greyton, South Africa.
- LEROUX, P.L. 1958. *Pharugostomum cordatum* (Dies, 1850), *Galoncus perniciosus* (v. Linstow, 1885) and *Gnathostoma spinigerum* (Owen, 1836), infections in a lion in Northern Rhodesia. *Transactions of the Royal Society of Tropical Medicine and Hygiene* **52**: 14.
- MÜLLER-GRAF, C.D.M. 1995. A coprological survey of intestinal parasites of wild lions (*Panthera leo*) in the Serengeti and the Ngorongoro Crater, Tanzania, East Africa. *Journal of Parasitology* **81**: 812–814.
- MÜLLER-GRAF, C.D.M., WOOLHOUSE, M.E.J. & PACKER, C. 1999. Epidemiology of an intestinal parasite (*Spirometra* sp.) in two populations of African lions (*Panthera leo*). *Parasitology* **118**: 407–415.
- NELSON, G.S., PESTER, F.R.N. & RICKMAN, R. 1965. The significance of wild animals in the transmission of cestodes of medical importance in Kenya. *Transactions of the Royal Society of Tropical Medicine and Hygiene* **59**: 507–524.
- RODGERS, W.A. 1974. Weights, measurements and parasitic infestation of six lions from southern Tanzania. *East African Wildlife Journal* **12**: 157–158.
- ROUND, M.C. 1968. *Checklist of the Helminth Parasites of African Mammals*. CAB, Farnham Royal, Bucks, U.K.
- SAMUEL, W.M., PYBUS, M.J. & KOCAN, A.A. 2001. *Parasitic diseases of wild mammals*, 2nd edn. Blackwell Publishing, Ames, Iowa, U.S.A.
- SCOTT, M.E. 1988. The impact of infection and disease on animal populations: implications for conservation biology. *Conservation Biology* **2**: 40–56.
- SMITH, Y. & KOK, O.B. 2006. Faecal helminth egg and oocyst counts of a small population of African lions (*Panthera leo*) in the southwestern Kalahari, Namibia. *Onderstepoort Journal of Veterinary Research* **73**: 71–75.
- TURNBULL, P.C., BELL, R.H., SAIGAWA, K., MUNYENYEMBE, F.E., MULENGA, C.K. & MAKALA, L.H. 1991. Anthrax in wildlife in the Luangwa valley, Zambia. *Veterinary Record* **128**: 399–403.
- VAN DE BILD, M.W.G., KUIKEN, T., VISEE, A.M., LEMA, S., FITZJOHN, R.T. & OSTERHAUS, D.M.E. 2002. Distemper outbreak and its effect on African wild dog conservation. *Emerging Infectious Diseases* **8**: 211–213.
- WHITE, F. 1983. The vegetation of Africa: a descriptive memoir to accompany the UNESCO/AETFAT/UNSO vegetation map of Africa. United Nations Educational, Scientific and Cultural Organization, Paris.
- WOODROFFE, R. & GINSBERG, J.R. 1998. Edge effects and the extinction of populations inside protected areas. *Science* **280**: 2126–2128.
- YOUNG, E. 1975. Some important parasitic and other diseases of lion, *Panthera leo*, in the Kruger National Park. *Journal of the South African Veterinary Association* **46**: 181–183.
- ZAJAC, A.M. & CONBOY, G.A. 2012. Fecal examination for the diagnosis of parasitism. In: *Veterinary Clinical Parasitology* (8th edn). Wiley-Blackwell, Ames, Iowa, U.S.A.