

2018

Revision of the taxonomic status of *Aphis floridanae* Tissot (Hemiptera: Aphididae) using morphological and molecular insight

Doris Lagos-Kutz

USDA, Agricultural Research Service, doris.lagos-kutz@ars.usda.gov

Susan E. Halbert

Florida Department of Agriculture and Consumer Services, Susan.Halbert@freshfromflorida.com

David J. Voegtlin

University of Illinois at Urbana-Champaign, dvoegtli@illinois.edu

Glen L. Hartman

USDA, Agricultural Research Service, glen.hartman@ars.usda.gov

Follow this and additional works at: <https://digitalcommons.unl.edu/insectamundi>



Part of the [Ecology and Evolutionary Biology Commons](#), and the [Entomology Commons](#)

Lagos-Kutz, Doris; Halbert, Susan E.; Voegtlin, David J.; and Hartman, Glen L., "Revision of the taxonomic status of *Aphis floridanae* Tissot (Hemiptera: Aphididae) using morphological and molecular insight" (2018). *Insecta Mundi*. 1121.

<https://digitalcommons.unl.edu/insectamundi/1121>

This Article is brought to you for free and open access by the Center for Systematic Entomology, Gainesville, Florida at DigitalCommons@University of Nebraska - Lincoln. It has been accepted for inclusion in Insecta Mundi by an authorized administrator of DigitalCommons@University of Nebraska - Lincoln.

INSECTA MUNDI

A Journal of World Insect Systematics

0627

Revision of the taxonomic status of *Aphis floridanae* Tissot
(Hemiptera: Aphididae) using morphological
and molecular insight

Doris Lagos-Kutz

United States Department of Agriculture-Agricultural Research Service
Urbana, IL

Susan E. Halbert

Florida Department of Agriculture and Consumer Services
Gainesville, FL

David J. Voegtlin

Illinois Natural History Survey, Prairie Research Institute
University of Illinois at Urbana-Champaign
Champaign, IL

Glen L. Hartman

United States Department of Agriculture-Agricultural Research Service
Urbana, IL

Date of issue: April 27, 2018

Doris Lagos-Kutz, Susan E. Halbert, David J. Voegtlin and Glen L. Hartman
Revision of the taxonomic status of *Aphis floridanae* Tissot (Hemiptera: Aphididae)
using morphological and molecular insight
Insecta Mundi 0627: 1–10

ZooBank Registered: urn:lsid:zoobank.org:pub:9B87561C-3568-4820-88D3-824E0BDB8A3B

Published in 2018 by

Center for Systematic Entomology, Inc.

P.O. Box 141874

Gainesville, FL 32614-1874 USA

<http://centerforsystematicentomology.org/>

Insecta Mundi is a journal primarily devoted to insect systematics, but articles can be published on any non-marine arthropod. Topics considered for publication include systematics, taxonomy, nomenclature, checklists, faunal works, and natural history. *Insecta Mundi* will not consider works in the applied sciences (i.e. medical entomology, pest control research, etc.), and no longer publishes book reviews or editorials. *Insecta Mundi* publishes original research or discoveries in an inexpensive and timely manner, distributing them free via open access on the internet on the date of publication.

Insecta Mundi is referenced or abstracted by several sources, including the Zoological Record and CAB Abstracts. *Insecta Mundi* is published irregularly throughout the year, with completed manuscripts assigned an individual number. Manuscripts must be peer reviewed prior to submission, after which they are reviewed by the editorial board to ensure quality. One author of each submitted manuscript must be a current member of the Center for Systematic Entomology.

Guidelines and requirements for the preparation of manuscripts are available on the *Insecta Mundi* website at <http://centerforsystematicentomology.org/insectamundi/>

Chief Editor: David Plotkin, insectamundi@gmail.com

Assistant Editor: Paul E. Skelley, insectamundi@gmail.com

Head Layout Editor: Robert G. Forsyth

Editorial Board: J. H. Frank, M. J. Paulsen, Michael C. Thomas

Review Editors: Listed on the *Insecta Mundi* webpage

Printed copies (ISSN 0749-6737) annually deposited in libraries

CSIRO, Canberra, ACT, Australia

Museu de Zoologia, São Paulo, Brazil

Agriculture and Agrifood Canada, Ottawa, ON, Canada

The Natural History Museum, London, UK

Muzeum i Instytut Zoologii PAN, Warsaw, Poland

National Taiwan University, Taipei, Taiwan

California Academy of Sciences, San Francisco, CA, USA

Florida Department of Agriculture and Consumer Services, Gainesville, FL, USA

Field Museum of Natural History, Chicago, IL, USA

National Museum of Natural History, Smithsonian Institution, Washington, DC, USA

Zoological Institute of Russian Academy of Sciences, Saint-Petersburg, Russia

Electronic copies (Online ISSN 1942-1354, CDROM ISSN 1942-1362) in PDF format

Printed CD or DVD mailed to all members at end of year. Archived digitally by Portico.

Florida Virtual Campus: <http://purl.fcla.edu/fcla/insectamundi>

University of Nebraska-Lincoln, Digital Commons: <http://digitalcommons.unl.edu/insectamundi/>

Goethe-Universität, Frankfurt am Main: <http://nbn-resolving.de/urn/resolver.pl?urn:nbn:de:hebis:30:3-135240>

Copyright held by the author(s). This is an open access article distributed under the terms of the Creative Commons, Attribution Non-Commercial License, which permits unrestricted non-commercial use, distribution, and reproduction in any medium, provided the original author(s) and source are credited. <http://creativecommons.org/licenses/by-nc/3.0/>

Layout Editor for this article: Robert G. Forsyth

Revision of the taxonomic status of *Aphis floridanae* Tissot (Hemiptera: Aphididae) using morphological and molecular insight

Doris Lagos-Kutz

United States Department of Agriculture-Agricultural Research Service
Urbana, IL
doris.lagos-kutz@ARS.USDA.GOV

Susan E. Halbert

Florida Department of Agriculture and Consumer Services
Gainesville, FL
Susan.Halbert@freshfromflorida.com

David J. Voegtlin

Illinois Natural History Survey, Prairie Research Institute
University of Illinois at Urbana-Champaign
Champaign, IL
dvoegtli@illinois.edu

Glen L. Hartman

United States Department of Agriculture-Agricultural Research Service
Urbana, IL
glen.hartman@ARS.USDA.GOV

Abstract. Morphological and cytochrome oxidase 1 (*Cox1*) data show that *Aphis floridanae* Tissot (Hemiptera: Aphididae) is not synonymous with *A. nasturtii* Kaltenbach. Instead, *A. floridanae* matches the morphological characters of *A. impatientis* Thomas. Additionally, the range of cytochrome oxidase 1 (*Cox1*) pair-wise distance of the multiple collections of *A. impatientis* on *Cornus* spp., *Impatiens* spp. and *Erechtites hieraciifolius* (L.) Raf. ex DC. is 0–0.39%. Therefore, we conclude that *A. floridanae* Tissot, 1933 is a junior synonym of *A. impatientis* Thomas, 1878, new synonymy. In addition, *A. impatientis* is re-described, including first descriptions of the ovipara and alate male of that species.

Key words. Morphology, *Aphis impatientis*, synonymy, genes, sequences, host plant.

Introduction

Aphis floridanae Tissot, 1933, is a North American species that feeds on endemic *Lactuca floridana* (L.) Gaertn and *Erechtites hieraciifolius* (L.) Raf. ex DC. Tissot (1933) provided morphological characters to distinguish *A. floridanae* from *A. rumicis* Linnaeus, 1758. Eastop and Hille Ris Lambers (1976) recognized it as a valid species, but Cook (1984) and Remaudière and Remaudière (1997) cited *A. floridanae* as a synonym of *A. nasturtii* Kaltenbach, 1843. Susan Halbert found specimens that appeared to be *A. floridanae* in suction traps in Florida. She noted that they resemble *A. salicariae* Koch, 1855, more than *A. nasturtii*, and found that the specimens keyed to *A. impatientis* Thomas, 1878 in Lagos-Kutz et al. (2016). After additional *A. floridanae*-like specimens were collected in Florida on *E. hieraciifolius*, we decided to gather morphological and molecular sequence data to elucidate the taxonomic status of *A. floridanae*.

Materials and Methods

Collection data of *A. impatientis* collected on *Lactuca floridana* and *Erechtites hieraciifolius* putative *A. floridanae* are provided in Table 1. Collection data of *A. impatientis* (aphids collected on *Impatiens* spp.) can be found in Lagos-Kutz et al. (2016). Species identification of slide-mounted materials was done

Table 1. Collection information of *Aphis impatientis* collected in Florida. INHS voucher and GenBank accession numbers are both included.

Species	Host	Date	Location	GPS	Collector	Collection voucher	GenBank accession #
<i>A. impatientis</i> Thomas, 1878	<i>Lactuca floridana</i>	07/21/1930	Tampa, Florida		F. S. Blanton	USNM: 44295	
	<i>Lactuca floridana</i>	07/21/1930	Tampa, Florida		F. S. Blanton	FSCA: F672-30	
	<i>Erechtites hieracifolius</i>	09/17/1968	1 m. N of S271 on S270, Gadson County, Florida		R. Nielsson	FSCA: N188	
	<i>Erechtites hieracifolius</i>	04/12/1972	Hendry County, Florida		W. Adlerz	FSCA: A72-73	
	<i>Erechtites hieracifolius</i>	08/04/1998	Orlando, Orange County, Florida		T. Emery	FSCA: E98-2745	
	<i>Erechtites hieracifolius</i>	06/22/2002	Fernandina Beach, Nassau County, Florida		J. Brambila	FSCA: E2002-2675	
	<i>Erechtites hieracifolius</i>	06/06/2011	Pt. Pierce Teague Hammock, St. Lucie County, Florida	27.31, -80.54	K. Hibbard	INHS: 819336-819338	KY399471
	<i>Erechtites hieracifolius</i>	08/21/2016	Arredondo, Alachua County, Florida	29.56, -82.42	S. Halbert	INHS: 819339-819340	KY399472– KY399473

based on using published keys (Voegtlin et al. 2004; Blackman and Eastop 2006; Lagos-Kutz et al. 2016) and authoritatively identified specimens in the insect collections of the Illinois Natural History Survey (INHS), U.S.D.A. Systematic Entomology Lab of Smithsonian National Museum of Natural History (USNM), and the Entomology Department of the Florida agricultural experimental station Florida State Collection of Arthropods (FSCA). Holotype of *A. floridanae* deposited in the USNM (44295) and paratypes in the FSCA (F672-30) were studied. Identifications of slide-mounted specimens were referenced to the aphid colony-mates used in the molecular analyses. Photographs of mounted specimens were taken using a Leica DM 2000 digital camera and SPOT Software 4.6 (Diagnostic Instruments, Inc., Michigan, USA). The SPOT software was used to take all measurements in millimeters for this study. A discriminant analysis of morphological characters and ratios was performed using JMP 13 (SAS Institute, Cary, NC).

DNA was extracted from one individual specimen from a field collection in Florida in 2011, and two individual specimens from a second field collection in Florida in 2016 (See Table 1 for more collection details). Individual specimens were crushed in a 1.5 ml microcentrifuge tube and DNA was purified using the QIAamp DNAmicrokit (QIAGEN Inc., Valencia, CA). The entire mitochondrial Cytochrome Oxidase I gene (*Cox1*) was amplified using two primer pairs: C1-J-1718 (Simon et al. 1994) and C1-J-2411 (Lagos et al. 2012), and C1-N-2509 (Lagos et al. 2012) and TL2-N-3014 (Simon et al. 1994). PCR products were generated using 8 µl of PCR-grade water, 1.25 µl each of 20 µM F and R primers, 12.5 µl of Phusion Master Mix (Thermo Fisher Scientific Inc., Grand Island, NY), and 2 µl of genomic DNA solution. The thermocycle used to amplify *Cox1* was: 95° C for 2 min followed by 35 cycles of 98° C for 60s; 98° C for 15s; 54° C for 30s; 72° C for 30s. PCR products were submitted to W. M. Keck Center at the University of Illinois for sequencing. In addition, a total of 19 sequences for *Cox1* were retrieved from GenBank to estimate the pairwise distances for *Cox1* were calculated using the Kimura 2-parameter distance model (Kimura 1980) in PAUP 4.0b10 (Swofford 2001): *Aphis asclepiadis* Fitch (KC897221), *A. cornifoliae* Fitch (KC897553); *A. fabae* Scopoli (JQ860274); *A. gossypii* Glover (JQ860257); *A. impatientis* (KC905689, KC905690, KC905691, KC905692, KC905693, KC905694, KC905695, KC905696, KC897572, KC897573); *A. nasturtii* (KC897159, KC897162, KC897165, KC897168); *A. rumicis* (KC897183); and *A. salicariae* (KC897588).

After alignment and excluding the primer sites, 1290 bp were used in the analyses. A total of 22 sequences for COI from eight species were used in this study. The sequences of *A. impatientis* collected on *E. hieracifolius* are available in GenBank under the following accession numbers: KY399471, KY399472, KY399473 (Table 1).

Results

The morphological characters and molecular evidence reveal that *A. floridanae* and *A. nasturtii* (Tables 2, 3) are distinct species that can be easily separated morphologically. The discriminant analysis of the morphological characters among *A. floridanae*, *A. impatientis* and *A. nasturtii* of both apterous and alate viviparae revealed that the ratios of Pt/B, URS/HT2, and SIPH/CA are the most useful characters to discriminate these species (Fig. 16), and that the other measured characters were rejected because of their high correlation (Table 2). Instead, the putative *A. floridanae* specimens conform the morphological characters described for the apterous and alate vivipara of *A. impatientis* (Fig. 1, 7) in dichotomous keys of the asclepiadis species group (Lagos-Kutz et al. 2016). This conclusion is also upheld with molecular evidence as the range of pair-wise distances among the collection on *E. hieracifolius* in Florida and the collections on *Cornus* spp. and *Impatiens* spp. is 0–0.39% (Table 3).

In this study, the re-description is presented based on morphological data of both *A. floridanae* and *A. impatientis* (Table 2). Since *A. impatientis* was described based on a single alate specimen, a description of all the morphs including the ovipara and males collected from *Cornus racemosa* (Lagos-Kutz et al. 2016) is necessary.

Table 2. Morphological characters of *Aphis impatientis*, *A. floridanae* and *A. nasturtii*. For all measurements and counts the range is given and the mean is in parenthesis. All measurements are in millimeters.

	<i>A. impatientis</i>				<i>A. floridanae</i>		<i>A. nasturtii</i>	
Morphological characters/ Morphs	Apterae (n = 37)	Alatae (n = 43)	Oviparae (n = 8)	Male (n = 3)	Apterae (n = 23)	Alatae (n = 21)	Apterae (n = 22)	Alatae (n = 23)
Body	1.1–1.8 (1.5)	1.2–1.9 (1.5)	1.0–1.3 (1.1)	1.1–1.3 (1.2)	1.2–1.8 (1.5)	1.1–1.9 (1.6)	1.3–2.2 (1.9)	1.3–1.9 (1.6)
Ultimate Rostral Segment (URS)	0.07–0.09 (0.08)	0.07–0.09 (0.08)	0.06–0.07 (0.07)	0.07	0.08–0.10 (0.09)	0.07–0.1 (0.08)	0.10–0.12 (0.11)	0.09–0.11 (0.10)
Antennal segments:	6	6	5	6	6	6	6	6
III	0.15–0.33 (0.22)	0.20–0.35 (0.27)	0.17–0.2 (0.20)	0.20–0.21 (0.21)	0.17–0.33 (0.24)	0.23–0.35 (0.28)	0.18–0.34 (0.28)	0.20–0.33 (0.27)
IV	0.09–0.21 (0.15)	0.12–0.23 (0.17)	0.07–0.11 (0.09)	0.13–0.14 (0.14)	0.10–0.21 (0.15)	0.13–0.23 (0.18)	0.12–0.23 (0.19)	0.13–0.24 (0.18)
V	0.10–0.17 (0.13)	0.10–0.18 (0.14)	—	0.13–0.14 (0.13)	0.10–0.17 (0.13)	0.11–0.16 (0.14)	0.12–0.19 (0.16)	0.11–0.19 (0.15)
Base of last ant. segm. (B)	0.08–0.12 (0.10)	0.08–0.13 (0.10)	0.07–0.09 (0.08)	0.08–0.09 (0.08)	0.07–0.12 (0.10)	0.08–0.13 (0.10)	0.09–0.12 (0.11)	0.09–0.12 (0.10)
Processus terminalis (Pt)	0.18–0.30 (0.25)	0.21–0.38 (0.26)	0.15–0.20 (0.18)	0.23	0.20–0.30 (0.25)	0.23–0.38 (0.27)	0.23–0.30 (0.27)	0.23–0.30 (0.26)
Secondary Sensoria on III	0	7–16 (12)	0	20–22 (21)	0	7–16 (12)	0	5–14 (10)
Secondary sensoria on IV	0	1–10 (4)	0	12–16 (14)	0	3–10 (6)	0	0–4 (3)
Secondary sensoria on V	0	0	0	1–9 (5)	0	0	0	0–3 (1)
Longest seta on ant.segm. III	0.004–0.013 (0.010)	0.004–0.012 (0.008)	0.007–0.011 (0.009)	0.007–0.008 (0.007)	0.007–0.013 (0.011)	0.006–0.012 (0.009)	0.009–0.016 (0.13)	0.008–0.016 (0.012)
Siphunculi (SIPH)	0.13–0.30 (0.20)	0.13–0.25 (0.17)	0.08–0.11 (0.09)	0.09–0.10 (0.09)	0.14–0.30 (0.22)	0.16–0.25 (0.19)	0.21–0.34 (0.28)	0.14–0.24 (0.19)
Cauda (CA)	0.11–0.20 (0.16)	0.10–0.17 (0.13)	0.10–0.14 (0.12)	0.09–0.10 (0.09)	0.13–0.20 (0.17)	0.11–0.17 (0.15)	0.15–0.21 (0.19)	0.11–0.16 (0.14)
Width of tubercle on abd. segm. I	0.005–0.020 (0.013)	0.005–0.022 (0.013)	0.005–0.009 (0.007)	0.008	0.010–0.018 (0.010)	0.010–0.022 (0.015)	0.013–0.026 (0.021)	0.010–0.019 (0.015)
Width of tubercle on abd. segm. VII	0.013–0.029 (0.021)	0.009–0.027 (0.018)	0.007–0.012 (0.009)	0.008–0.017 (0.012)	0.018–0.029 (0.022)	0.014–0.030 (0.022)	0.014–0.028 (0.021)	0.012–0.025 (0.017)
Hind Tibia	0.48–0.80 (0.65)	0.56–0.89 (0.70)	0.37–0.48 (0.44)	0.54–0.56 (0.55)	0.58–0.80 (0.67)	0.64–0.89 (0.75)	0.67–0.99 (0.85)	0.63–0.94 (0.78)
Second hind tarsus (HT2)	0.08–0.12 (0.10)	0.08–0.12 (0.10)	0.07–0.09 (0.08)	0.08–0.09 (0.09)	0.09–0.12 (0.10)	0.09–0.11 (0.10)	0.09–0.12 (0.11)	0.09–0.11 (0.10)
Pt/B	2.0–3.1 (2.5)	2.1–3.1 (2.6)	2.1–2.5 (2.3)	2.6–2.8 (2.7)	2.0–3.7 (2.7)	2.3–3.3 (2.7)	2.2–2.8 (2.5)	2.2–2.7 (2.5)

Table 2. Continued.

	<i>A. impatientis</i>				<i>A. floridanae</i>		<i>A. nasturtii</i>	
Morphological characters/ Morphs	Apterae (n = 37)	Alatae (n = 43)	Oviparae (n = 8)	Male (n = 3)	Apterae (n = 23)	Alatae (n = 21)	Apterae (n = 22)	Alatae (n = 23)
URS/HT2	0.7–1.0 (0.8)	0.7–1.1 (0.8)	0.8–0.9 (0.9)	0.7–0.9 (0.8)	0.8–1.0 (0.9)	0.7–1.1 (0.9)	0.9–1.2 (1.0)	0.9–1.1 (1.0)
SIPH/CA	0.9–1.6 (1.3)	0.9–1.8 (1.3)	0.7–0.8 (0.8)	0.8–1.2 (1.0)	1.0–1.6 (1.3)	1.0–1.8 (1.3)	1.3–1.8 (1.5)	1.2–1.5 (1.4)
URS accessory setae	2	2	2	2	2–3 (2)	2–3 (2)	2–4 (2)	2
Caudal setae	4–10 (7)	4–10 (6)	5–6 (5)	6	6–10 (8)	6–10 (8)	6–10 (8)	6–9 (7)
Setae abd. tergite VIII	2–4 (3)	2–4 (2)	2	–	2–4 (3)	2–4 (2)	2	2
Anterior setae on subgenital plate	2–7 (4)	2–7 (4)	–	–	3–6 (4)	2–7 (4)	2	2–3 (2)
Marginal tubercles on II, III and IV	Absent	Absent	Absent	Absent	Absent	Absent	Present	Present

Table 3. Pairwise interspecific distances (%) of species morphologically associated to *Aphis impatientis* for COI calculated using Kimura 2-parameter.

	<i>A. asclepiadis</i>	<i>A. cornifoliae</i>	<i>A. fabae</i>	<i>A. gossypii</i>	<i>A. impatientis</i>	<i>A. nasturtii</i>	<i>A. rumicis</i>
<i>A. cornifoliae</i>	6.88						
<i>A. fabae</i>	7.75	7.82					
<i>A. gossypii</i>	8.77	9.75	7.39				
<i>A. impatientis</i>	6.96–7.05	1.25–1.41	7.99–8.26	9.84–10.01	0–0.39		
<i>A. nasturtii</i>	7.98–8.24	8.16	6.44	6.69	7.98–8.24		
<i>A. rumicis</i>	8.6–8.77	8.42	4.34	7.82	8.60–8.77	6.52	
<i>A. salicariae</i>	3.52	6.96	7.84	8.77	6.96–7.14	7.73	7.91

Aphis impatientis* Thomas, 1878Aphis floridanae* Tissot, 1933, **new synonymy**

Diagnosis. Despite of the overlapping of the ratios: Pt/B, SIPH/CA and URS/HT2, they seem to be useful for discrimination and there are other descriptive characters that can be used for diagnosis. The apterous viviparae of *Aphis impatientis* can be distinguished from *A. nasturtii* by the color of siphunculi that are dark throughout and curved outwards. The antennal segments III of *A. impatientis* and *A. nasturtii* have secundaria sensoria arranged in a row and scattered respectively. Also, both morphs of *A. impatientis* lack marginal tubercles on abdominal segments II–V while *A. nasturtii* has marginal tubercles on all abdominal segments. Lastly, the body color of both morphs of *A. impatientis* and *A. nasturtii* is brownish and greenish respectively. For more comparative morphometric data and photographs of these species, *A. salicariae* and *A. rumicis* see Lagos-Kutz et al. (2016) and Lagos-Kutz et al. (2018).

Description. Apterous viviparae (n = 37) (Table 2 and Fig. 1–6). *Color in life* (Fig. 14–15). Head, siphunculi and cauda black. Abdomen brown with white wax. Antennal segments one and six dusky, the other segments light-orange. Legs light-orange and dusky. Thorax and abdomen brown dusted with white wax. *Color on slide and morphological characters.* *Head:* dusky with 2 frontal setae. Antennal tubercles undeveloped. Antennae six-segmented, shorter than body. Antennal segments: one and six dusky; the other segments pale. Secondary sensoria absent on all antennal segments. Rostrum extending to mesocoxae. *Thorax:* Coxae dusky. Trochanters paler than coxae. Fore femora dusky. Middle and hind femora dark, pale near the base. Tibiae pale, darkening near distal tip. Tarsi dusky. *Abdomen:* Cauda dark, parallel sided and blunt. Siphunculi dark, curved outwards with flange. Marginal sclerites pale. Pre-siphuncular and post-siphuncular sclerites absent. Marginal tubercles present on abdominal segments I and VII, absent from II, III, and IV. Dorsum of abdomen without sclerites. Subgenital plate dusky, complete. Dorsal cuticle with reticulation.

Alate viviparae (n = 42) (Table 2 and Fig. 7–11). *Color in life* (Fig. 15). Head and thorax black. Abdomen brown, shiny, without wax. Wings dusky, transparent. Femora black, and tibiae light-yellow. *Color on slide and morphological characters.* *Head:* Dark with 2 frontal setae. Antennal tubercles undeveloped. Antennae six-segmented, shorter than body. All antennal segments dark. Antennal segments III and IV with secondary sensoria arranged in a single row. Rostrum does not reach the metacoxae. *Thorax:* Coxae dark. Trochanters paler than coxae. Fore femora dusky. Middle and hind femora dark except at the base. Tibiae pale, darkening near distal tip. Tarsi dark. *Abdomen:* Cauda dark, finger shaped. Siphunculi dark, weakly curved outwards with flange. Marginal sclerites dark. Pre-siphuncular sclerite absent. Post-siphuncular sclerite dark. Marginal tubercles present on abdominal segments I and VII. Dorsal abdomen with transverse sclerites on VII, and VIII. Subgenital plate dusky, complete.

Apterous oviparae (n = 8) (Table 2). *Color in life.* Same color pattern as apterous vivipara. *Color on slide and morphological characters* (Fig. 12). *Head:* Dusky without frontal setae. Antennal tubercles undeveloped. Antennae five-segmented, shorter than body. Antennal segments dusky. Rostrum reaches mesocoxae. *Thorax:* Coxae dusky. Trochanters pale. Fore femora pale throughout, mid and fore femora dusky except at base. Tibia pale throughout. Tarsi dusky. Hind tibia not swollen and without pseudo-sensoria. *Abdomen:* Siphunculi dusky, strongly curved outwards with reduced flange. Cauda dusky, oblong and pointed. Pre-siphuncular and post-siphuncular sclerites absent. Marginal tubercles present only on abdominal segments I and VII. Marginal tubercles on abdominal segments II, III, and IV absent. Dorsum of abdomen without sclerites. Subgenital plate dark, and divided.

Alate male (n = 3) (Table 2). *Color in life.* Same color pattern as alate vivipara. *Color on slide and morphological characters* (Fig. 13). *Head:* Dark without frontal setae. Antennal tubercles undeveloped. Antennae six-segmented, shorter than body. Antennae with secondary sensoria scattered on segments III, IV, and V. Antennal segments dusky. Rostrum reaches mesocoxae. *Thorax:* Coxae dusky. Trochanters pale. Fore femora pale throughout, mid and fore femora dusky except at base. Tibia pale, darkening near distal tip. Tarsi dusky. *Abdomen:* Siphunculi short and slightly curved outwards. Cauda dusky, oblong and pointed. Marginal tubercles present on abdominal segments I and VII. Male genitalia dark with 2 short claspers anteriorly and aedeagus centrally.

Discussion

Aphis floridanae is currently treated as a synonym of *A. nasturtii*. Morphological and molecular comparisons of multiple collections showed that these species are not synonymous (Fig. 1–11, Tables 2, 3). Instead, we conclude that *A. floridanae* Tissot, 1933 is a junior synonym of *A. impatientis* Thomas, 1878 and, in accordance with the Principle of Priority of the International Code on Zoological Nomenclature (Article 23, ICZN 1999), refer to *A. floridanae* as *A. impatientis*. The wide distribution of *A. impatientis* and its secondary host plants, such as *L. floridana*, *E. hieraciifolius* and native North American *Impatiens*, and primary host *Cornus* in North America (USDA-NRCS. 2018) have led to such an issue within the species, and there still more to explore about the distribution and host plant association of this species. Host alternation provides an opportunity for aphids to acquire new hosts and may be a key to the rapid

diversification of some groups of aphids (Eastop 1971; Dixon 1973; von Dohlen and Moran 2000), but can result in problematic taxonomy when polyphagous species are described from different hosts. While traditional morphological techniques demonstrated that *A. floridanae* is distinct from *A. nasturtii* and similar to *A. impatientis*, we reaffirmed the usefulness of mitochondrial DNA sequences for matching aphid life stages as has been demonstrated within polyphagous aphid species on different host plants (Zhang et al. 2008; Coeur d'acier et al. 2014). Lastly, the genetic variation found in this study (0.39%) is not different from other polyphagous *Aphis* species, such as *A. asclepiadis* (Footitt et al. 2008; Lagos-Kutz et al. 2016), and *A. gossypii* (Footitt et al. 2008; Favret and Miller 2011; Lagos-Kutz et al. 2014).

Acknowledgments

Support was provided by funds from the North Central Soybean Research Program. Many thanks to Dr. Gary Miller, Research Leader of the USDA Beltsville ARS Systematic Entomology Laboratory, for sending Tissot's slides and for his quick correspondence, and Dr. James Haudenshield, Research Plant Pathologist, USDA-ARS, for input on improving sequences quality. We gratefully acknowledge the collaboration of Dr. Michael Skvarla, insect identification laboratory directory and extension educator, Pennsylvania State University, USA, and Dr. Nicolás Pérez-Hidalgo, researcher of the Department of genetics, University of Valencia, Spain, for their valuable comments that help to improve the quality of this manuscript.

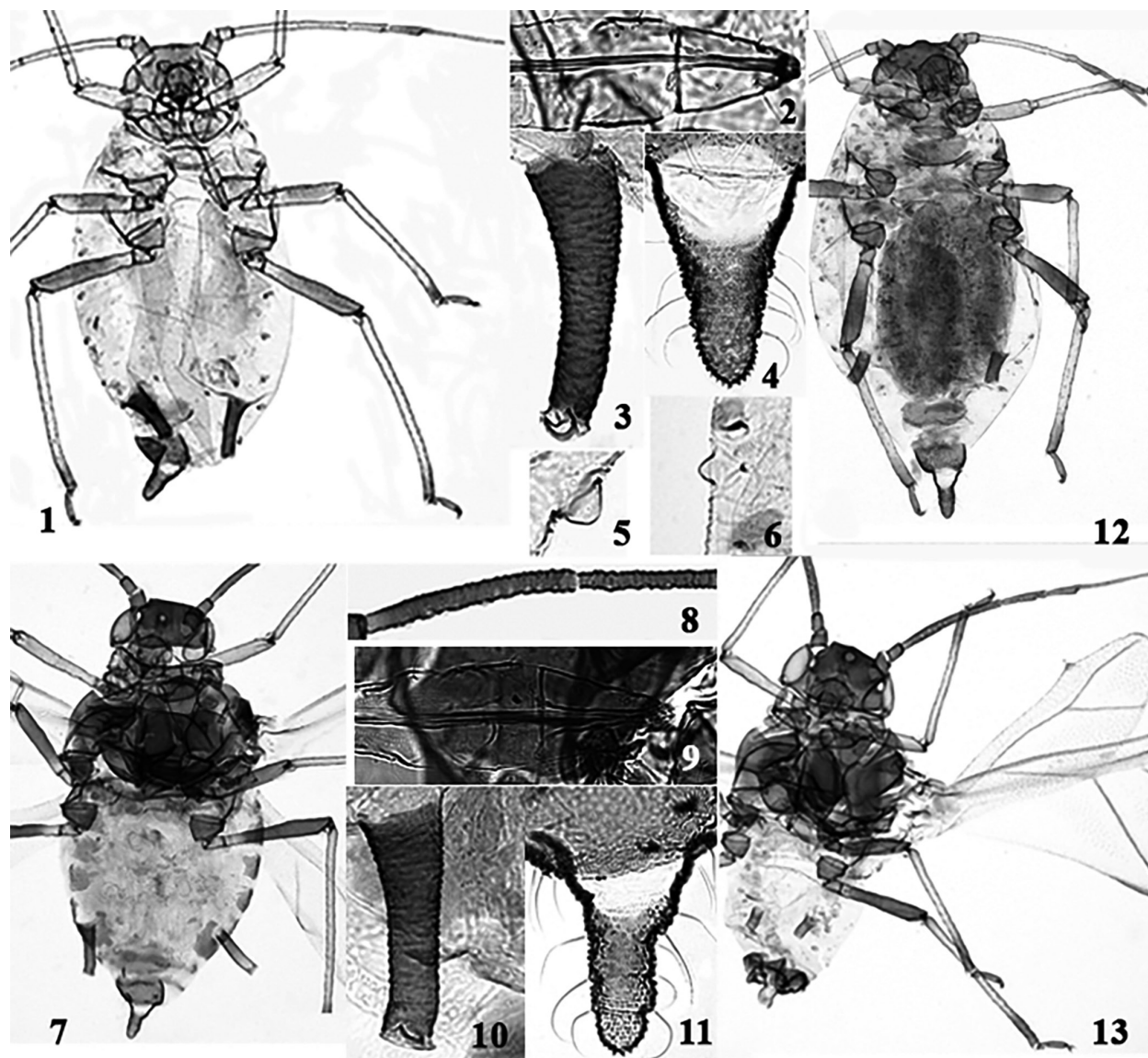
Literature Cited

- Blackman, R. L., and V. F. Eastop. 2006.** Aphids on the World's Herbaceous Plants and Shrubs. Vols 1 and 2. Wiley; Chichester (UK) and New York. 1439 p.
- Coeur d'acier, A., A. Cruaud, E. Artige, G. Genson, A-L. Clamens, E. Pierre, S. Hudaverdian, J-C. Simmon, A. E. Jousselin, and J. Y. Rasplus. 2014.** DNA Barcoding and the Associated PhylAphidB@se Website for the Identification of European Aphids (Insecta: Hemiptera: Aphididae). PLoS ONE 9(6): e97620. Available at <http://journals.plos.org/plosone/article?id=10.1371/journal.pone.0097620>. (Last accessed December 2016.)
- Cook, E. F. 1984.** *Aphis* (Homoptera: Aphididae) recorded from compositae in North America, with a key to the species East of the Rocky Mountains and comments on synonymy and redescriptions of some little known forms. Annals of the Entomological Society of America 77: 442–449.
- Dixon, A. F. G. 1973.** Biology of Aphids. Edward Arnold; London. 58 p.
- Eastop, V. F. 1971.** Deductions from the present day host plants of aphids and related insects. The Royal Entomological Society of London 6: 157–178.
- Eastop, V. F., and D. Hille Ris Lambers. 1976.** Survey of the World's Aphids. Dr. W. Junk b.v. Publishers; The Hague. 573 p.
- Favret, C., and G. L. Miller. 2011.** The neotype of the cotton aphid (Hemiptera: Aphididae: *Aphis gossypii* Glover 1877. Proceedings of the Entomological Society of Washington 113(2): 119–126.
- Footitt, R. G., H. E. L. Maw, C. D. von Dohlen, and P. D. N. Hebert. 2008.** Species identification of aphids (Insecta: Hemiptera: Aphididae) through DNA barcodes. Molecular Ecology Resources 8: 1189–1201.
- ICZN [International Commission on Zoological Nomenclature]. 1999.** International code of zoological nomenclature. Fourth edition. International Trust for Zoological Nomenclature; London. 306 p.
- JMP® Pro 13. 1989-2007.** SAS Institute Inc.; Cary, NC.
- Kaltenbach, J. H. 1843.** Monographie der Familien der Pflanzenläuse (Phytophthires). Roschütz; Aachen. 222 p.
- Kimura, M. 1980.** A simple method for estimating evolutionary rates of base substitutions through comparative studies of nucleotide sequences. Journal of Molecular Evolution 16 (2): 111–120.
- Koch, C. L. 1855.** Die Pflanzenläuse Aphiden, getreu nach dem Leben abgebildet und beschrieben. Nurnberg. Hefts V–VIII: 135–236.
- Lagos, D. M., B. Puttler, R. Giordano, and D. J. Voegtlin. 2012.** A new species of *Aphis* (Hemiptera:

- Aphididae) in Missouri on St. John's Wort, *Hypericum kalmianum*, and re-description of *Aphis hyperici* Monell. Zootaxa 3478: 81–92.
- Lagos-Kutz, D., C. Favret, R. Giordano, and D. J. Voegtlin. 2014.** Molecular and morphological differentiation between *Aphis gossypii* Glover (Hemiptera, Aphididae) and related species, with particular reference to the North American Midwest. ZooKeys 459: 49–72.
- Lagos-Kutz, D., C. Favret, R. Giordano, and D. J. Voegtlin. 2016.** The status of the members of the *Aphis asclepiadis* species group (Hemiptera, Aphididae) in the United States of America. Annals of the Entomological Society of America 109(4): 585–594.
- Lagos-Kutz, D., D. J. Voegtlin, and D. Dimitriev. 2018.** An interactive key to *Aphis* in midwestern United States of America. Available at <http://dimitriev.speciesfile.org/key.asp?key=Aphis&lng=En&i=1&keyN=1>. (Last accessed January 2018.)
- Linnaeus, C. 1758.** Systema naturae per regna tri naturae, secundum classes, ordines, genera, species, cum characteribus, differentiis, synonymis, locis. Editio Decima, Reformata 1. Laurentius Salvius; Stockholm. 824 p.
- Remaudière, G., and M. Remaudière. 1997.** Catalogue des Aphididae du monde-Catalogue of the world's Aphididae [Homoptera, Aphidoidea]. INRA Paris; Paris. 473 p.
- Simon, J.-C., F. Frati, A. Beckenbach, B. Crespi, H. Liu, and P. Flook. 1994.** Evolution, weighting, and phylogenetic utility of mitochondrial gene sequences and a compilation of conserved polymerase chain reaction primer. Annals of the Entomological Society of America 87(6): 651–701.
- Swofford, D. L. 2001.** PAUP*: Phylogenetic Analysis Using parsimony (*and other methods), version 4. Sinauer Associates; Sunderland, Massachusetts.
- Thomas, C. 1878 [1877].** A list of the species of the tribe Aphidini, family Aphidae, found in the United States, which have heretofore been named, with descriptions of some new species. Bulletin of the Illinois State Laboratory of Natural History 1(2):3–16
- Tissot, A. N. 1933.** Five New Species of *Anuraphis* and *Aphis*. The Florida Entomologist 16(4): 49–60.
- USDA-NRCS. 2018.** The plants database National Plant Data Center, Baton Rouge, LA 70874-4490 USA. Available at <http://plants.usda.gov>. (Last accessed December 2018.)
- Voegtlin, D. J., S. E. Halbert, and G. Qiao. 2004.** A guide to separating *Aphis glycines* Matsumura and morphologically similar species that share its hosts. Annals of Entomological Society of America 97(2): 227–232.
- von Dohlen, C. D., and N. A. Moran. 2000.** Molecular data supports a rapid radiation of aphids in the cretaceous and multiple origins of host alternation. Biological Journal of the Linnean Society 71: 689–717.
- Zhang, H.-C., D. Zhang, and G.-X. Qiao. 2008.** Association of aphid life stages using DNA sequences: A case study of tribe Eriosomatini (Hemiptera: Aphididae: Pemphiginae). Insect Science 15: 545–551.

Received February 21, 2018; accepted March 30, 2018.

Review editor Joe Eger.



Figures 1–13. *Aphis impatientis*. 1–6) Apterous vivipara. 1) Body. 2) Ultimate rostral segment. 3) Siphunculus. 4) Cauda. 5) Marginal tubercle on abdominal segment VII. 6) Marginal tubercle on abdominal segment I. 7–11) Alate vivipara. 7) Body. 8) Antennal segments: III–IV. 9) Ultimate rostral segment. 10) Siphunculus. 11) Cauda. 12) Apterous ovipara, body. 13) Alate male, body.



Figures 14–15. Colony of *Aphis impatiensis*. **14)** On *Erechtites hieraciifolius*. Photograph: Lyle Buss, senior biological scientist, University of Florida, Institute of Food and Agricultural Sciences, Florida. **15)** On *Impatiens capensis*. Photograph: David Voegtlin, emeritus INHS of University of Illinois at Urbana-Champaign, Illinois.

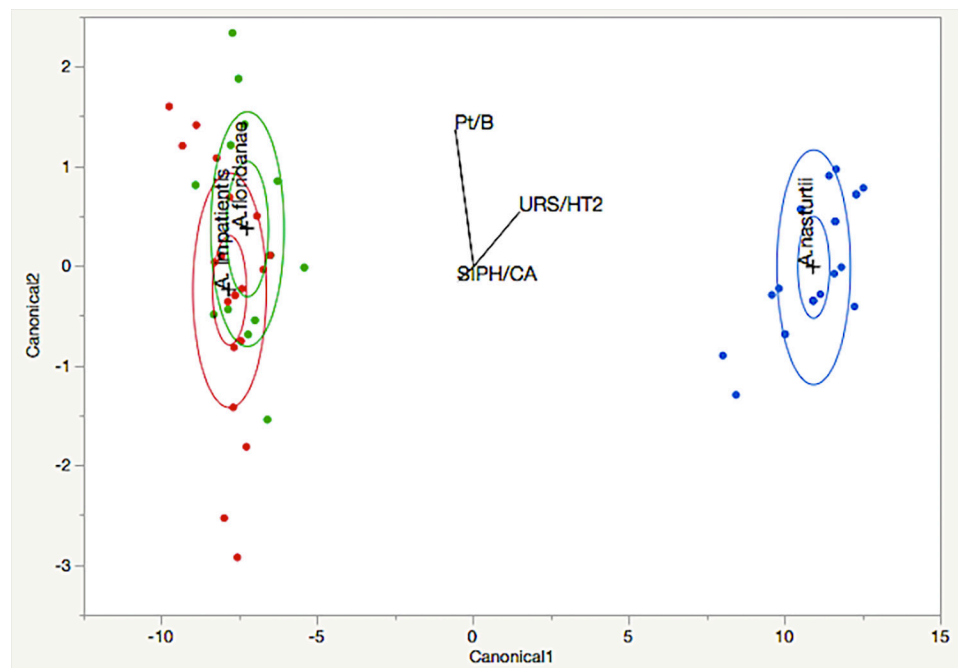


Figure 16. Discriminant analysis of 57 specimens of *Aphis impatiensis*, *A. floridanae* and *A. nasturtii* based on the analysis of the ratios: Pt/B, URS/HT2 and SIPH/CA.