

University of Nebraska - Lincoln

DigitalCommons@University of Nebraska - Lincoln

---

USDA Wildlife Services - Staff Publications

U.S. Department of Agriculture: Animal and  
Plant Health Inspection Service

---

2013

## Intranasal Inoculation of White-Tailed Deer (*Odocoileus virginianus*) with Lyophilized Chronic Wasting Disease Prion Particulate Complexed to Montmorillonite Clay

Tracy A. Nichols

National Wildlife Research Center, [tracy.a.nichols@aphis.usda.gov](mailto:tracy.a.nichols@aphis.usda.gov)

Terry R. Spraker

Colorado State University

Tara D. Rigg

National Wildlife Research Center

Crystal Meyerett-Reid

Colorado State University

Clare Hoover

Colorado State University

Follow this and additional works at: [https://digitalcommons.unl.edu/icwdm\\_usdanwrc](https://digitalcommons.unl.edu/icwdm_usdanwrc)  
See next page for additional authors



Part of the [Life Sciences Commons](#)

---

Nichols, Tracy A.; Spraker, Terry R.; Rigg, Tara D.; Meyerett-Reid, Crystal; Hoover, Clare; Michel, Brady; Bian, Jifeng; Hoover, Edward; Gidlewski, Thomas; Balachandran, Aru; O'Rourke, Katherine; Telling, Glenn C.; Bowen, Richard; Zabel, Mark D.; and VerCauteren, Kurt C., "Intranasal Inoculation of White-Tailed Deer (*Odocoileus virginianus*) with Lyophilized Chronic Wasting Disease Prion Particulate Complexed to Montmorillonite Clay" (2013). *USDA Wildlife Services - Staff Publications*. 1568.  
[https://digitalcommons.unl.edu/icwdm\\_usdanwrc/1568](https://digitalcommons.unl.edu/icwdm_usdanwrc/1568)

This Article is brought to you for free and open access by the U.S. Department of Agriculture: Animal and Plant Health Inspection Service at DigitalCommons@University of Nebraska - Lincoln. It has been accepted for inclusion in USDA Wildlife Services - Staff Publications by an authorized administrator of DigitalCommons@University of Nebraska - Lincoln.

---

## Authors

Tracy A. Nichols, Terry R. Spraker, Tara D. Rigg, Crystal Meyerett-Reid, Clare Hoover, Brady Michel, Jifeng Bian, Edward Hoover, Thomas Gidlewski, Aru Balachandran, Katherine O'Rourke, Glenn C. Telling, Richard Bowen, Mark D. Zabel, and Kurt C. VerCauteren

# Intranasal Inoculation of White-Tailed Deer (*Odocoileus virginianus*) with Lyophilized Chronic Wasting Disease Prion Particulate Complexed to Montmorillonite Clay

Tracy A. Nichols<sup>1\*</sup>, Terry R. Spraker<sup>2,3</sup>, Tara D. Rigg<sup>1</sup>, Crystal Meyerrett-Reid<sup>3</sup>, Clare Hoover<sup>3</sup>, Brady Michel<sup>3</sup>, Jifeng Bian<sup>3</sup>, Edward Hoover<sup>3</sup>, Thomas Gidlewski<sup>1</sup>, Aru Balachandran<sup>5</sup>, Katherine O'Rourke<sup>6</sup>, Glenn C. Telling<sup>3</sup>, Richard Bowen<sup>4</sup>, Mark D. Zabel<sup>3,9</sup>, Kurt C. VerCauteren<sup>1,9</sup>

**1** National Wildlife Research Center, US Department of Agriculture, Animal and Plant Health Inspection Service, Wildlife Services, Fort Collins, Colorado, United States of America, **2** Colorado State University Diagnostic Laboratory, Fort Collins, Colorado, United States of America, **3** Prion Research Center and the Department of Microbiology, Immunology and Pathology, College of Veterinary Medicine and Biomedical Sciences, Colorado State University Prion Research Center, Fort Collins, Colorado, United States of America, **4** Department of Biomedical Sciences, College of Veterinary Medicine and Biomedical Sciences, Colorado State University, Fort Collins, Colorado, United States of America, **5** National and OIE Reference Laboratory for scrapie and chronic wasting disease, Canadian Food Inspection Agency, Ottawa, Ontario, Canada, **6** U. S. Department of Agriculture, Agricultural Research Service, Pullman, Washington, United States of America

## Abstract

Chronic wasting disease (CWD), the only known prion disease endemic in wildlife, is a persistent problem in both wild and captive North American cervid populations. This disease continues to spread and cases are found in new areas each year. Indirect transmission can occur via the environment and is thought to occur by the oral and/or intranasal route. Oral transmission has been experimentally demonstrated and although intranasal transmission has been postulated, it has not been tested in a natural host until recently. Prions have been shown to adsorb strongly to clay particles and upon oral inoculation the prion/clay combination exhibits increased infectivity in rodent models. Deer and elk undoubtedly and chronically inhale dust particles routinely while living in the landscape while foraging and rutting. We therefore hypothesized that dust represents a viable vehicle for intranasal CWD prion exposure. To test this hypothesis, CWD-positive brain homogenate was mixed with montmorillonite clay (Mte), lyophilized, pulverized and inoculated intranasally into white-tailed deer once a week for 6 weeks. Deer were euthanized at 95, 105, 120 and 175 days post final inoculation and tissues examined for CWD-associated prion proteins by immunohistochemistry. Our results demonstrate that CWD can be efficiently transmitted utilizing Mte particles as a prion carrier and intranasal exposure.

**Citation:** Nichols TA, Spraker TR, Rigg TD, Meyerrett-Reid C, Hoover C, et al. (2013) Intranasal Inoculation of White-Tailed Deer (*Odocoileus virginianus*) with Lyophilized Chronic Wasting Disease Prion Particulate Complexed to Montmorillonite Clay. PLoS ONE 8(5): e62455. doi:10.1371/journal.pone.0062455

**Editor:** Anthony E. Kincaid, Creighton University, United States of America

**Received:** November 30, 2012; **Accepted:** March 21, 2013; **Published:** May 9, 2013

This is an open-access article, free of all copyright, and may be freely reproduced, distributed, transmitted, modified, built upon, or otherwise used by anyone for any lawful purpose. The work is made available under the Creative Commons CC0 public domain dedication.

**Funding:** Funding was provided by U.S. Department of Agriculture, Animal and Plant Health Inspection Service, Veterinary Services (VS). The funders had no role in study design, data collection and analysis, decision to publish, or preparation of the manuscript.

**Competing Interests:** The authors have declared that no competing interests exist.

\* E-mail: tracy.a.nichols@aphis.usda.gov

† Current address: Department of Veterinary Microbiology and Pathology, College of Veterinary Medicine, Washington State University, Pullman, Washington, United States of America

‡ These authors contributed equally to this work.

## Introduction

Chronic wasting disease (CWD) is a naturally occurring transmissible spongiform encephalopathy (TSE) of deer, elk and moose that affects captive as well as wild populations. Currently, 15 states, 2 Canadian provinces and South Korea have reported cases of CWD [1] with more being reported each year. Like all prion diseases, conversion of a normal, host cellular prion protein (PrP<sup>C</sup>) to a pathologic, misfolded form (PrP<sup>CWD</sup>) causes CWD. This conversion process, according to the prion hypothesis, allows aberrantly folded prions to replicate without a genome [2]. Death inevitably occurs after onset of clinical disease. Direct animal-to-animal [3] and indirect environmental [4] CWD transmission have been shown to occur. Animal studies have demonstrated that CWD-positive deer can disseminate CWD prions into the environment via urine, feces and saliva [5–7]. Although the

concentration of prions in urine and feces is low, the total fecal and urine output is high, with each deer depositing approximately 119 kg dry weight of feces/deer [8] and roughly 1000 L of urine per deer into the environment annually. Elk excretion of prion is likely greater as they are much larger animals. This ongoing, progressive environmental contamination may be substantial in areas with large cervid populations and a high incidence of CWD. Once in the environment, prions can persist and transmit disease years after removal of infected animals and indirect environmental transmission in deer has been documented [4,9,10]. After contaminated urine, feces or saliva have been deposited in the environment on forage and soil, they become available for ingestion and inhalation. Soil particles, particularly clay, tightly adsorb prions [9,11,12] and soil is inadvertently ingested during foraging with deer consuming an average of 16 g of soil per day [13]. Soil is also intentionally ingested at mineral licks, which are

utilized by deer, elk and moose (our unpublished observations). Oral delivery of CWD-positive brain material into deer in the laboratory resulted in effective transmission of the disease [14,15] and soil-bound prions enhanced oral transmission in hamsters [16]. In addition to oral ingestion of soil, deer and elk also stir up and inhale dust during foraging, running and rutting behaviors such as advertising, territorial, and hierarchical displays [17,18]. Male white-tailed deer mark territory by scraping patches of earth and urinating on them. Other male and female deer then encounter the scrape, smell the soil and perform the same marking behavior [17]. Elk engage in several behaviors that can aerosolize dry soil particles: dominance displays such as thrashing the ground with their antlers as a visual performance for challenging bulls and advertising displays for females such as and pawing and scraping the ground with their antlers [18]. We propose that inhalation of CWD-contaminated dust particles during these behaviors is a likely route of exposure.

Intranasal (IN) infection has been validated in rodent models by placing liquid inoculum into or in front of the nasal cavity [19–21]. Kincaid and Bartz discovered that although IN inoculated hamsters had incubation times equivalent to orally inoculated hamsters, the IN route was 10–100 times more efficient at transmitting the disease [21]. This suggests that the IN route may be an efficient route of transmission in natural situations. A recent study utilizing aerosolized liquid inoculum demonstrated that CWD can be transmitted via the nose in white-tailed deer [22]. In the current study, CWD-positive brain homogenate was mixed with montmorillonite clay (Mte), lyophilized, pulverized, and atomized into the nasal cavity of white-tailed deer once a week for six weeks, modeling a chronic environmental exposure. The deer were euthanized at four time points and tissues were examined by immunohistochemistry. We found that lyophilized CWD prion particulate complexed to Mte was efficiently transmitted IN to deer and PrP genotype influenced lymphatic distribution and density.

## Materials and Methods

### Animals and husbandry

All procedures involving animals were performed to minimize suffering and were approved by the Institutional Animal Care and Use Committee at Colorado State University in accordance with the USDA Animal Welfare Act Regulation. CFR, title 9, chapter 1, subchapter A, parts 1–4.

Fifteen white-tailed deer (*Odocoileus virginianus*) fawns of mixed sex and PRNP genotype (codon 96) were purchased from a CWD-free private deer facility (Northwoods White-tails, Missouri, US) in June 2011 and transported to the USDA National Wildlife Research Center (NWRC) in Fort Collins, CO. At the time of transport fawns ranged from two to fourteen days of age. Fawns were bottle-fed and were weaned by 16 weeks. One fawn was euthanized at eight weeks of age due to an encephalitis of unknown origin.

At twelve weeks of age 12 deer were transported to a Colorado State University (CSU) BSL-2 facility for CWD-inoculation. The remaining two deer served as controls and remained at the USDA National Wildlife Research Center (NWRC) facility.

### PRNP Genotyping

Blood was drawn from fawns upon arrival and sent to the USDA Agricultural Research laboratory in Pullman, WA for genetic analysis of the open reading frame of *PRNP*. All animals were homozygous for the wild type amino acid at residue 95- (glutamine Q). There were three genotypes present for codon 96: 5

were homozygous for the wild type allele encoding glycine (GG), four were heterozygous for G and the alternative allele encoding serine (GS) and five were homozygous SS. To assess any effects of genotype on study results, deer from each genetic group were distributed as evenly as possible among the euthanasia time point groups.

### Inoculum preparation

A 20% homogenate of white-tailed deer brain from experimentally inoculated, CWD-terminal or CWD-negative deer was generated in 0.5× phosphate buffered saline (PBS) and glass beads utilizing a Blue Bullet homogenizer (Next Advance, Averill Park, NY) as previously described [23]. To verify the negative status of the brain homogenate from the control animal, six rounds of serial protein misfolding amplification (PMCA) were conducted and samples visualized by western blot as previously described [23]. CWD status of the positive brain homogenate was verified by western blot. Individual inoculums were prepared by thoroughly mixing 1 ml of the 20% brain homogenate (200 mg total brain) and 250 mg of Mte clay (Sigma, St. Louis, MO) in a plastic weigh boat. Brain/clay slurry was lyophilized at room temperature for 24 hours under a chemical fume hood. A razor blade was used to scrape and grind the dried mixture back into a fine powder (Fig. 1). The resulting powdered inoculum was drawn into a blunt plastic transfer pipette, sealed with parafilm, and kept at  $-80^{\circ}\text{C}$  until needed. To determine the size of the Mte clay particles, a sample was analyzed by the Colorado State University Soil laboratory (Fort Collins, CO) utilizing the pipette method [24].

### Inoculum titer

We quantified the infectivity of our CWD+ inoculum with the cervid prion cell assay (CPCA) as described previously [25]. Briefly, a 10% brain homogenate was made from a 20% inoculum sample with cold PBS lacking  $\text{Mg}^{2+}$  and  $\text{Ca}^{2+}$ . Homogenate was passed through 18-, 23-, 26- and 28-gauge needles 15 times each, and stored at  $-80^{\circ}\text{C}$  until used. A rabbit kidney epithelial (RK13) cell line (ATCC, Manassas VA) engineered to express deer prion protein, referred to as Deer5E9-S1, which is highly sensitive to the infection with deer CWD prions (manuscript in preparation) was utilized in this assay. Twenty thousand cells per well were plated in 96-well plates. One day later, cells were exposed to three-fold serial dilutions of deer CWD+ brain homogenate prepared in cell culture medium, ranging from  $10^{-2}$  to  $10^{-5}$ , in a volume of 100  $\mu\text{l}$



**Figure 1. Expulsion of the lyophilized CWD/Mte inoculum from a transfer pipette illustrating the ultrafine texture of the inoculum.**

doi:10.1371/journal.pone.0062455.g001

per well. Cells that were not exposed to CWD prions served as a background control.

Cells were passaged three times at four day intervals at 1:4 and 1:7 split ratios. When cells reached confluence at the third passage, 20,000 cells per well were filtered onto Multiscreen IP 96-well 0.45- $\mu$ m filter plates (Elispot plates, Millipore, Billerica, MA). Plates were dried at 50°C and cells were digested for 90 min at 37°C in 60  $\mu$ l of lysis buffer containing 5  $\mu$ g/ml proteinase K (PK) then terminated with phenylmethanesulfonylfluoride (PMSF) (2 mM). To expose the epitope of PrP<sup>27-30</sup>, cells were incubated in 120  $\mu$ l 3 M guanidinium thiocyanate in 10 mM Tris-HCl (pH 8.0) for 10 min at room temperature then rinsed four times with 160  $\mu$ l PBS. For immunodetection, wells were filled with 120  $\mu$ l of filtered 5% superblock (Pierce, Rockford, IL) and incubated for one hr at room temperature. The solution was removed by vacuum, and wells were incubated with 60  $\mu$ l of 6H4 mAb, diluted 1: 5000 in TBST for one hr at RT or overnight at 4°C. Wells were rinsed four times with 160  $\mu$ l of TBST then incubated with 60  $\mu$ l AP- $\alpha$ -Mouse IgG (Southern Biotechnology Associates, Birmingham, AL), diluted 1: 5000 in TBST, after one hr at RT, the wells were rinsed four times with 160  $\mu$ l TBST, followed by a final wash with PBS. Plates were allowed to dry completely. Visualization was done by adding 60  $\mu$ l of AP conjugate substrate kit (Bio-Rad, Hercules, CA) at RT and rinsing twice with 160  $\mu$ l water and allowed to completely dry. Images were scanned with a ImmunoSpot S6-V analyzer (Cellular Technology Ltd, Shaker Heights, OH), and spot numbers were determined using ImmunoSpot5 software (Cellular Technology Ltd, Shaker Heights, OH). Statistical analyses were performed using GraphPad Prism 5.0 for Mac OS X software. Prion titer was calculated in spot-forming CPCA units per gram of wet brain homogenate.

## Inoculations

The deer were bottle-fed and hand-raised so they were easily manually restrained for the intranasal inoculations. The plastic transfer pipette containing the powdered inoculum was warmed to room temperature, inserted approximately 3 cm into the left nostril and inoculum puffed into the nasal cavity once a week for six weeks, exposing each deer to a total of 1.2 g (wet weight) of brain. Two mock-infected control deer were inoculated in the same fashion using CWD-negative brain/clay inoculum. Three deer were euthanized at each of three time points after the final inoculation: 95, 105, 120 days post inoculation (DPI); and two deer at 175 DPI. Because of the presence of genetic variation at codon 96, a GG, GS and SS deer was placed in each of the four time groups with the exception of the 105 DPI group, which contained one GG and two SS genotypes. The control deer were composed of one GG and one GS.

## Inoculum tracking

Two tracking methods were employed to determine the distribution of the CWD inoculum within nasal the cavity, both grossly and microscopically, after inoculation. To grossly determine the distribution of the clay inoculum, 500  $\mu$ l of green fluorescent dye (GFD, Wizard Tattoo Ink, Chicago, IL) and 500  $\mu$ l of deionized water were added to 250 mg of Mte clay and mixed thoroughly. The mixture was prepared and inoculated IN as described for brain homogenates. The ink was visible with both ultraviolet and visible light. One control deer was manually restrained and inoculated IN with GFD/Mte into the left nostril. Forty-five minutes later the deer was euthanized and necropsy conducted.

To track the uptake of the CWD/Mte material within the nasal mucosa, a lyophilized, fluorescently-labeled CWD prion was strategy employed. Purified deer CWD prion rods were isolated as previously described [26] and conjugated to a Dylight 650 fluorescent tag using a Dylight antibody labeling kit (Thermo Scientific Pierce, Waltham, NJ). Ten  $\mu$ l aliquots were each mixed with 50  $\mu$ l of deionized H<sub>2</sub>O then floated in the water bath of a 3000MP sonicator (Misonix, Farmingdale, NY) at 37°C and sonicated for 30 sec at 70% maximum power. Sonicated, fluorescent prions were mixed with an additional 450  $\mu$ l of DI H<sub>2</sub>O then with 250 mg of Mte clay in a weigh boat and lyophilized. Prion/Mte dust was prepared and inoculated as the brain inocula described above. The two deer from the final 175 DPI euthanasia time point were manually restrained and given the prion/Mte inoculum in the left nostril at either 60 or 45 min prior to euthanasia.

Deer were sedated with Xylazine (Lloyd Laboratories, Shenandoah, IA) then euthanized via intravenous injection of Beuthanasia-D (Schering-Plough Animal Health Corp., Union, NJ). Deer were immediately transported to the Colorado State University Veterinary Diagnostic Laboratory for a complete post mortem examination.

At necropsy of the GFD/Mte tracer control deer, the nasal cavity, throat, and head lymph nodes were examined for the presence of GFD/Mte using a hand-held UV light source (Spectroline, Westbury, NY). Nasal turbinates were serially dissected and photographed. To detect microscopic-sized dyed particles, a fluorescent microscope was used with a UV excitation source and UV emission filter.

To visualize fluorescent prions, sections were counterstained with 1  $\mu$ g/mL of the Carbocyanin lipophilic tracer DiOC<sub>18</sub> and 100 ng/mL DAPI for 20 minutes, then mounted using ProLong Gold fluorescent mounting medium (Life Technologies, Madison, WI). Five to twelve 5  $\mu$ m thick, paraffin-embedded tissue sections from nasal turbinates, retropharyngeal, submandibular and parotid lymph nodes and tonsils were viewed and photographed using an Olympus BX60 microscope (Center Valley, PA) equipped with a cooled charge-coupled diode camera.

## Immunohistochemistry

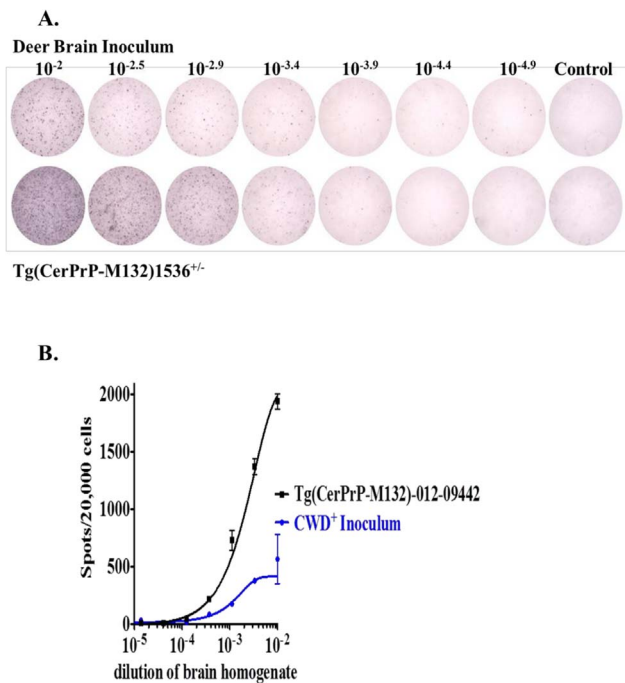
Retropharyngeal, submandibular, parotid, pre-scapular, pre-femoral, mesenteric, and iliocecal junction lymph nodes as well as tonsils, Peyer's patches, rectum, brain, and nasal tissues (cribriform plate, and ethmoid turbinates, two sections from each) were collected from the deer at necropsy and placed in 10% neutral buffered formalin for one week. The nasal tissues were then placed in 10% formic acid for three to five days for decalcification, trimmed, and embedded in paraffin blocks. Other tissues were trimmed and two to four sections of each were placed in plastic cassettes and allowed to fix for an additional two days. Slides were prepared as previously described for visualization and evaluation [27]. Briefly, 5  $\mu$ m tissue slices were mounted on positively charged glass slides (Fisher Scientific, Houston, TX), antigen retrieval with formic acid and hydrated autoclaving was performed and F99/97.6.1 antibody was employed to detect PrP<sup>CWD</sup>, a biomarker for CWD, followed by incubation with alkaline phosphatase-conjugated anti-mouse IgG secondary antibody and visualized using an automated immunostainer and an alkaline phosphatase red kit (Ventana, Tucson). Slides were counterstained with hematoxylin for four minutes at 37°C. Positive and negative control slides containing lymphoid tissues and brain were stained with each run. PrP<sup>CWD</sup> was visualized as granular red staining showing protease-resistant deposits within lymphoid

follicles. All follicles were counted for each section present on each slide, totaling between 1600–3069 follicles for each deer.

## Results

### Chronic wasting disease infection

The CWD status of the negative inoculum was verified by PMCA and the positive by western blot analysis (data not shown) prior to inoculation. Control brain inoculum remained negative after six 24 hr rounds of PMCA amplification and western blot visualization. Positive brain inoculum was positive on western blot visualization. The deer CWD prion infectivity titer was determined by CPCA using a highly sensitive Deer 5E9-S1 cell line (Fig. 2). The prion titers of the inoculum and a Tg(CerPrP-M132)1536<sup>+/-</sup> mouse-passaged CWD prion isolate 012-09442 were calculated as 10<sup>6.1</sup> and 10<sup>6.6</sup> cervid prion cell units per gram of brain homogenate, (CPCA units/g), respectively. The results of the titer assay revealed that the CWD prion inoculum titer was approximately three times lower than that of a transgenic mouse strain commonly used to generate disease in a mouse bioassay (Fig. 2). All deer were healthy upon inoculation, however, shortly after inoculation an SS deer in the 175 DPI group developed a chronic GI infection that required long-term antibiotic treatment. As a result this deer was excluded from the study.



**Figure 2. Quantification of deer CWD prion by the cervid prion cell assay.** **A.** Representative wells of an ELISPOT plate showing spots given by triplicate deer 5E9-S1 cells exposed to 3-fold serial dilutions of CWD+ inoculate brain homogenate, deer CWD (upper) and Tg(CerPrP-M132)1536<sup>+/-</sup>-passaged CWD prion isolate 012-09442 (lower), the concentration of brain homogenates (left to right) are: 10<sup>-2</sup>, 10<sup>-2.5</sup>, 10<sup>-2.9</sup>, 10<sup>-3.4</sup>, 10<sup>-3.9</sup>, 10<sup>-4.4</sup> and 10<sup>-4.9</sup>. The wells at right are uninfected Deer5E9-S1 cells. **B.** Responsiveness of Deer5E9-S1 cells to the CWD+ inoculum and Tg(CerPrP-M132)1536<sup>+/-</sup> mouse-passaged CWD prion isolate 012-09442 were between 10<sup>-2</sup> and 10<sup>-5</sup>. The cells were infected with serial 1:3 dilutions of homogenates of CWD+ inoculum and subjected to the CPCA. In each case, the mean is derived from experiments performed in triplicate, with error bars indicating the standard errors of the means (SEM). doi:10.1371/journal.pone.0062455.g002

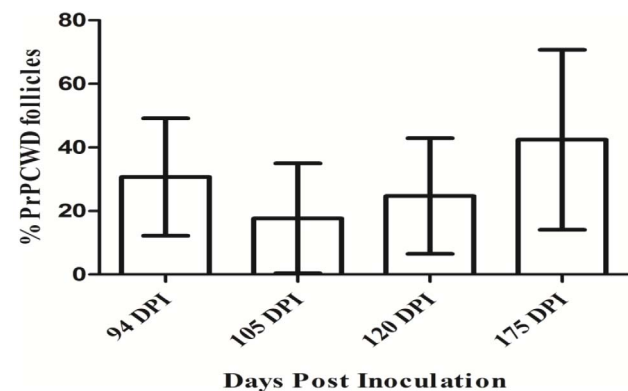
**Table 1.** Detection of CWD in lymphoid follicles.

Codon 96 genotype	DPI	Number of CWD+ follicles total follicles	% of affected follicles
GG	175	0/2547	0%
GS	175	0/2900	0%
GS	95	663/2141	31%
GG	95	1376/1972	70%
SS	95	66/2939	2%
GG	105	828/1635	51%
SS	105	0/2338	0%
SS	105	20/3069	<1%
GG	120	1751/2396	73%
GS	120	155/1763	9%
SS	120	168/2061	8%
GG	175	467/2790	17%
GS	175	471/1790	26%

Between 1600 and 3069 lymphoid follicles from head LNs, tonsils, pre-scapular and femoral LNs, Peyer's patches, mesenteric LN, gut LNs and rectum were evaluated in each deer for the presence of CWD by IHC. Percentage of total follicles IHC-positive for CWD ranged between 0–>70%, depending on genotype. (\*Control mock-infected deer).

doi:10.1371/journal.pone.0062455.t001

We observed no clinical signs characteristic of CWD and no detectable PrP<sup>CWD</sup> by IHC in the obex, thalamus, hypothalamus, basal ganglia, olfactory bulb, or hippocampus of the brain in any of the deer at any of the time points. We next investigated subclinical infection by searching for PrP<sup>CWD</sup> in lymph nodes that drain or are proximal to the nasal cavity; retropharyngeal, submandibular, parotid, and palatine tonsil, as well as distal lymph nodes, pre-scapular, pre-femoral, mesenteric, Peyer's patches and the recto-anal mucosa associated lymphoid tissue (RAMALT). PrP<sup>CWD</sup> was not detected in either of the two mock-infected control deer (0/2 at 175 DPI), but was detected in lymph nodes of 10/11 of the CWD-inoculated deer by IHC (Table 1) as early as 94 DPI. The number of CWD-positive follicles was not significantly different at later time points (Fig. 3).



**Figure 3. Lymphoid involvement at each of the 4 time points.** No significant difference was detected in the number of affected follicles between the groups (ANOVA,  $p = 0.86$ ). doi:10.1371/journal.pone.0062455.g003

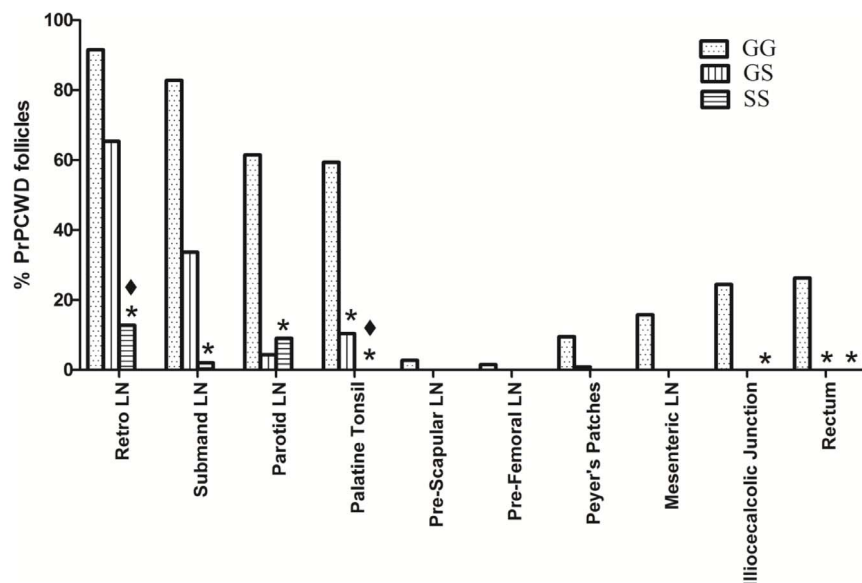


### Influence of genotype

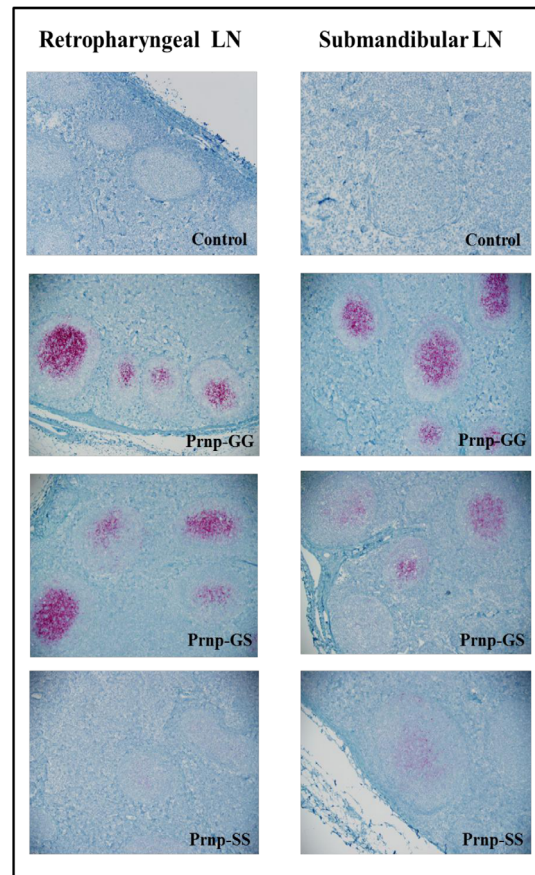
Upon genotypic analysis, it was discovered that although all deer were homozygous at codon 95 (QQ), all three genotypes (GG, GS, and SS) were represented at codon 96. We therefore sampled deer from each genotype at each time point. We found that the genotype at codon 96 affected  $\text{PrP}^{\text{CWD}}$  temporal distribution and proportion of  $\text{PrP}^{\text{CWD}}$  positive follicles within the lymphoid system (Fig. 4). Overall, the deer with GG genotype had a much wider  $\text{PrP}^{\text{CWD}}$  distribution in the body and a higher percentage of CWD-positive follicles in the retropharyngeal, submandibular, parotid, pre-scapular, pre-femoral, and mesenteric lymph nodes, palatine tonsils, Peyer's patches, ileocecal junction, and rectum. The number of CWD+ immunoreactive follicles in the retropharyngeal, submandibular, parotid, palatine tonsils, ileocecal junction, and rectum were significantly greater (Student's one-tailed T-test  $p < 0.05$ ) in the GG animals as compared to SS deer. Follicle number in the palatine tonsils and the rectum were significantly greater (Student's one-tailed T-test  $p < 0.05$ ) than in GS deer (Fig. 4). Deer having the GS genotype had fewer positive follicles and a more limited distribution with positive follicles detected in the retropharyngeal, submandibular, and parotid lymph nodes, palatine tonsils and Peyer's patches (Fig. 4). We found the most limited distribution and lowest number of positive follicles in the deer with the SS genotype, with  $\text{PrP}^{\text{CWD}}$  detected only in the retropharyngeal, submandibular, and parotid lymph nodes (Fig. 4). Genotype also had an influence on the intensity of immunoreactivity within the affected lymph nodes, with GG having the greatest number of stained granules, followed by GS then SS (Fig. 5).

### Inoculum tracking

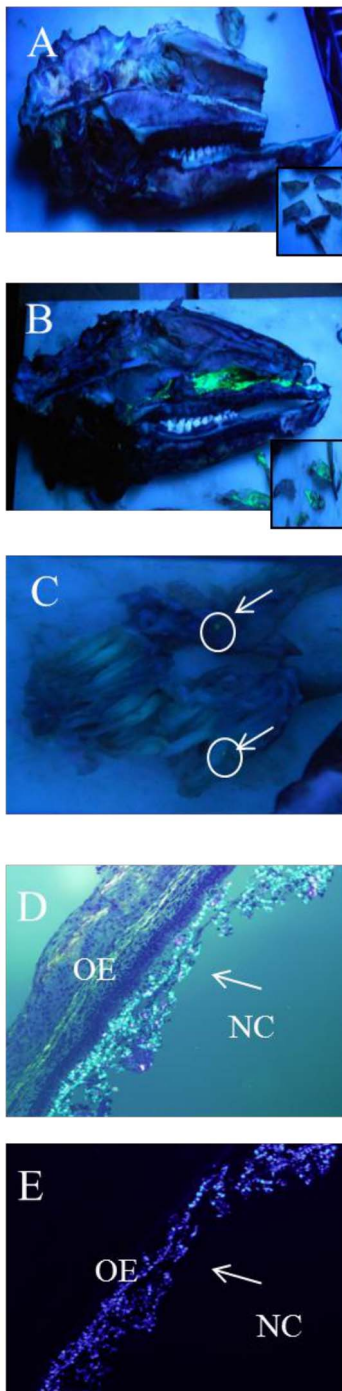
To determine if the deposition of the initial inocula could influence later replication sites and to understand the deposition and initial contact/entry sites for prions and the Mte within the nasal cavity, we sought to track the location of inocula immediately after exposure. We first puffed GFD/Mte dust (Fig. 1) into the nasal cavity and searched for it 45 min later.



**Figure 4.  $\text{Prnp}$  genotype affects  $\text{PrP}^{\text{CWD}}$  distribution and proportion of  $\text{PrP}^{\text{CWD}}$  positive follicles in the lymphoid system.** The GG genotype had a wider  $\text{PrP}^{\text{CWD}}$  distribution than GS and SS. \*Tissue CWD % was significantly less than the GG genotype. ♦ Tissue CWD % was significantly less than the GS genotype. (Students one tailed T-test,  $p \leq 0.05$ ). doi:10.1371/journal.pone.0062455.g004



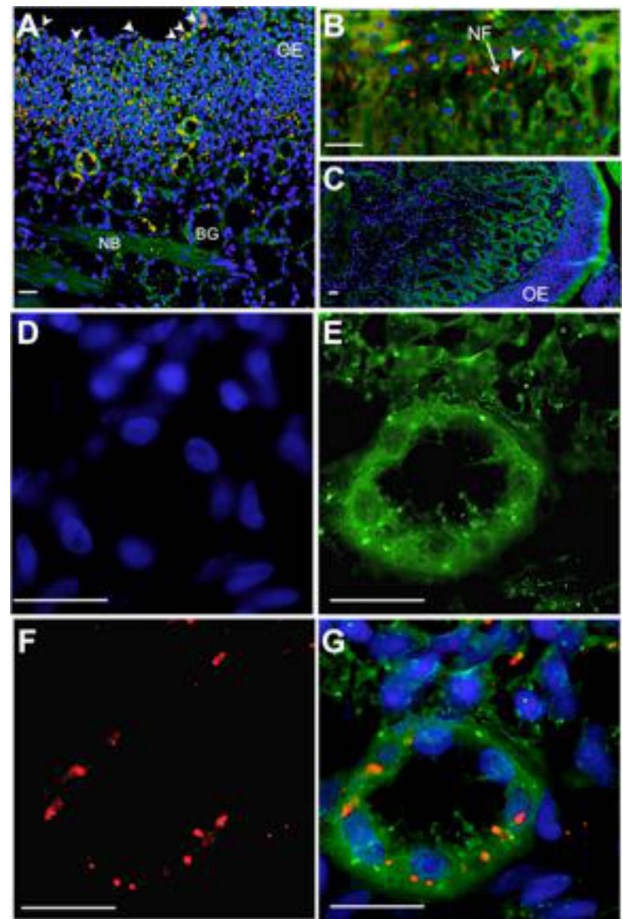
**Figure 5.  $\text{PrP}^{\text{CWD}}$  immunolabeling in the retropharyngeal and submandibular lymph nodes at 200× magnification, mAb F99/97.6.1 and alkaline phosphatase detection.** doi:10.1371/journal.pone.0062455.g005



**Figure 6. Visualization of GFD/Mte particles.** 6A. Longitudinal cut of a deer head without GFD/Mte under a blacklight. Inset- dissected nasal turbinates. 6B. Longitudinal cut of a deer head inoculated with GFD/Mte under a black light with visible GFD/Mte deposition. Inset- dissected nasal turbinates. 6C. Ethmoid nasal turbinates under a blacklight. Arrows and circles indicate small particles of GFD/Mte. 6D. Mounted nasal turbinate with 100 $\times$  magnification showing GFD/Mte particles associated with the nasal mucosa under normal light and with a ultraviolet filter. OE-Olfactory epithelium, NC-Nasal Cavity. Arrows indicate GFD/Mte (6E).

doi:10.1371/journal.pone.0062455.g006

The Mte is not readily visualized without the presence of the GFD. Upon gross examination, we saw a small amount of GFD/Mte under visible light and a significant amount under UV light on the



**Figure 7. Tracking lyophilized prion inocula in the nasal cavity of deer.** Highly enriched, fluorescently labeled prions were mixed with Mte, lyophilized, pulverized and puffed into the nasal cavity. (A) After 45 minutes, florescent prion aggregates (red) can be seen on (white arrowheads) and within the olfactory epithelium (OE) of the nasal turbinates. Tissue sections are counterstained with DiOC<sub>18</sub> fluorescent membrane dye (green) and the nuclear stain DAPI (blue). A small proportion of prions can be seen near serous cells of the Bowman's glands (BG) in the lamina propria. (B) By 60 min, significant amount of prions were found in the lamina propria, with some aggregates (arrowhead) associated with nerve fibers (NF) emanating from the OE. (C) We detected no red signal from negative control sections from mock-inoculated deer. (D–G) Higher magnification of a Bowman's gland stained with DAPI (D), DiOC<sub>18</sub> (E) and decorated with prions (F) that appear to localize on serous cells (G). NB, nerve bundle; scale bar, 20  $\mu$ m.

doi:10.1371/journal.pone.0062455.g007

nasal mucosa of the nasal passages and to a lesser extent in the nasopharynx (Fig. 6a). A few small spots were seen on the ethmoid turbinates (Fig. 6b). Microscopic examination revealed GFD/Mte on the mucus and surface epithelial cells of the nasal cavity (Fig. 6 c, d, e). We next puffed highly-enriched fluorescent prions adsorbed to Mte into the nasal cavity and searched for them microscopically based on the location of GFD/Mte. We found fluorescently tagged prion rods in both animals after 45 and 60 min on and within the olfactory epithelium (OE, Fig. 7A), as well as associated with nerve fibers (NF, Fig. 7b) and serous cells of the Bowman's glands (BG) in the lamina propria (LP) after 60 min (Fig. 7D–G).

We detected no prions associated with blood or lymphatic vessels in the lamina propria, or in any of the lymph nodes



examined, including the retropharyngeal, submandibular and parotid lymph nodes, and palatine tonsils at these very early time points.

## Discussion

Indirect environmental CWD transmission has been demonstrated and several infectious tissues and excreta have been identified that could contaminate forage, soil and water [5,6,7][28]. We also know that prions can adsorb to soil and its components and remain infectious [16]. However, we know little about how prions are re-introduced into hosts from the environment. Here we model natural prion exposure to dry, prion-adsorbed Mte particles that mimics natural, repeated IN dust exposure at a volume significantly lower (1.2 g) than those used in previous oral inoculation studies (5 and 10 g respectively) [14,15]. We failed to detect PrP<sup>CWD</sup> in the brain as late as 175 days after IN PrP<sup>CWD</sup> dust exposure. All brain regions analyzed were negative, demonstrating that although PrP<sup>CWD</sup> staining could be detected in the lymph nodes of the head in all genotypes and in more distal nodes in the GG genotype, observable PrP<sup>CWD</sup> accumulation had not yet progressed to the brain.

The olfactory bulb was of particular interest in this study. There are millions of olfactory sensory neurons (OSN) present in the nasal mucosa that connect directly to the olfactory bulb [29,30]. Diseases such as polio, rabies and herpes simplex 1 infection [31–33] and toxicants such as aflatoxin B [34] are able to take advantage of this direct anterograde connection to infect the brain. It has been suggested that infectious prions may utilize this same route to enter the brain, as PrP<sup>RES</sup> deposition has been documented in the olfactory bulb and nasal mucosa of terminally ill, infected animals [35]. Additionally, both the OSNs and olfactory bulb express PrP<sup>C</sup> in mice [30]. In this study, the olfactory bulb, surrounding brain area and nasal mucosa did not show deposition of PrP<sup>CWD</sup> by IHC, demonstrating that the PrP<sup>CWD</sup> did not travel along these neurons to enter the brain by 175 DPI. Our results are in agreement with rodent studies that show prion diseases are unable to make use of this direct connection to the brain and that olfactory bulb and nasal mucosa deposition occurs later in the disease, moving retrograde from the brain to the olfactory bulb and then down the OSNs to the nasal mucosa [20,35].

In contrast to the brain, we found substantial PrP<sup>CWD</sup> in the lymph nodes and tonsils of the head (retropharyngeal, submandibular and parotid lymph nodes) in all genotypes. The tonsil findings are in agreement with those of a concurrent study using aerosolization of liquid inoculum [22]. We detected PrP<sup>CWD</sup> in mesenteric lymph nodes, Peyer's patches and in lymphoid follicles at the ileocecal junction of the gut and rectum only in deer expressing the GG PRNP genotype. Despite detecting original inoculum deep within the nasal turbinates on OE and mucus-secreting Bowman's glands, IHC analysis of the nasal turbinates did not reveal the presence of CWD prions later in infection. Taken together, these data suggest that after IN exposure, CWD infection begins in lymphoid tissues proximal to the nasal cavity and later progresses to the brain.

Dust can be an environmentally realistic, chronic, low dose mode of intranasal CWD exposure for deer and elk in the wild, particularly in dry western states such as Colorado and Wyoming. The size of dust particles is directly proportional to how far the particles are able to travel into the respiratory tract, with particles  $\leq 1 \mu\text{m}$  able to travel into the deepest regions of the lung, 1–5  $\mu\text{m}$  into the bronchiolar region, 5  $\mu\text{m}$  into the upper lung and  $>10 \mu\text{m}$  caught in the nose and oral pharynx [36]. Analysis of the

Mte used in this study revealed that 2.5% of the particles were 10  $\mu\text{m}$ , 5.3% were 5  $\mu\text{m}$ , 36.4% were 2  $\mu\text{m}$  and 55.8% were  $\leq 1 \mu\text{m}$  in accord with a previous study evaluating Mte particle size [37]. Studies have shown that CWD can tightly adsorb to clay particles, such as Mte, and cause disease after oral inoculation [9]. In this study, Mte was used as an effective dust carrier to transmit CWD intranasally, however, further research needs to be conducted to determine the binding relationship between the CWD and the Mte. Mte is a widely distributed, biologically inert clay, commonly called Fuller's earth or bentonite. The large surface area, negative charge and small size make Mte an effective nanoparticle carrier for gene therapy DNA and chemotherapeutic agents into the gut [37–39]. The binding of Mte to DNA and drugs significantly enhances their mucoadhesion, cellular uptake and efficacy within the gut; and confocal microscopy reveals that Mte/drug particles are internalized into cells [37–39]. In a study on gut particle uptake, 1  $\mu\text{m}$  latex beads were detected in Peyer's patches and mesenteric lymph nodes six hrs after oral inoculation [40]. Our gross examination of deer exposed to GFD/Mte tracer demonstrated the extensive mucoadhesion of GFD/Mte inoculum throughout the main nasal passage, associated nasal mucosa, and mucus on peripheral nasal turbinate surfaces 45 min after inoculation. It seems likely that the mucoadhesion increased retention time of the inoculum and may have facilitated increased CWD prion uptake. The initial experimental design of this study included inoculating dried brain as well as brain/Mte, however, drying the brain homogenate proved problematic. The texture of the dried brain was extremely thick and sticky, prohibiting the generation of a powder. As a result this component was eliminated.

We detected fluorescent prions on and within the olfactory epithelium and associated with nerve fibers and serous cells of the Bowman's glands in the lamina propria within one hr of exposure. We hypothesize that PrP<sup>CWD</sup> traffics from the nasal mucosa to draining lymph nodes via immune cells, or autonomously through lymphatic drainage, or both [26].

Peyer's patches in the gut and the nasal mucosa contain dendritic cells (DC) and specialized membranous (M) cells [41–43], which sample the lumen for antigens and present them to regional lymph nodes [44–48]. Uptake of prions by DCs in the gut has been implicated in prion disease transmission [49,50] with M cells can trafficking prions across cellular and mucosal surfaces in vitro and in vivo [51,52]. The presence and importance of DCs in the nasal mucosa as first line of defense against inhaled microbes and allergens, is well established [53–56]. DCs reside throughout the olfactory epithelium at an airway density between 500 and 1000 cells/mm<sup>2</sup> of nasal epithelium [57] and often sit atop, as well as insert between tight junctions of, the Bowman's glands [58]. We propose that in this study DCs and M cells likely took up PrP<sup>CWD</sup> from the olfactory epithelium and lamina propria and transported them to regional draining lymph nodes. However, we cannot eliminate paracellular or cell autonomous movement of prions, as has previously been shown [26,59]. Inhalation of dust and other particles has been shown to cause rhinitis that enhances cytokines and increases the number of DCs in the nasal mucosa [55,60–62].

## Influence of genotype

This study provided a unique opportunity to observe the effect of the dimorphism at codon 96 on IN infection of deer with Mte-adsorbed prion particulate. Several studies examining the prevalence of codon 96 polymorphisms have been done on wild populations with the GG polymorphism being the most common (72%), followed by GS (13–25%), and SS (3%) [63,64]. Wild GG animals have a higher prevalence and shorter incubation period of

CWD compared to GS and SS genotypes [65]. The distribution and prevalence of CWD within the body of the SS and GS deer in this study were significantly different from GG wild-type deer, with GS and SS having CWD deposition predominantly in the head lymph nodes. Lymph nodes are essential sites of CWD propagation in deer and elk [66]. We detected minor PrP<sup>CWD</sup> deposition in the Peyer's patches in one GS deer. These data suggest that GS and SS deer have slower CWD progression in the peripheral lymphoid tissues of the body, which may explain the delayed progression of CWD observed in GS and SS mule deer by Miller *et al.* [67].

The results of this study confirm that CWD can be successfully transmitted IN as a lyophilized prion particulate adsorbed to Mte and that genotype at codon 96 affects the lymphoid distribution of CWD within the body. Additionally, two novel intranasal tracking methods were employed that provided insight into CWD translocation within the nasal cavity. The data collected in this study may also shed light on why there is a higher prevalence of CWD in males, as males participate in more behaviors that generate dust. We propose chronic, long-term exposure to CWD

prions adsorbed to dust particles to be a natural CWD infection route in addition to chronic oral and nasal contact exposure.

## Acknowledgments

We thank Cody Minor, Nikki Crider, Jessie Gorges and Kiera Wood for their excellent care of the fawns, Dr. Pauline Nol for fawn veterinary care, Karl Held for his assistance in maintaining the animal facilities, other NWRC staff that assisted in pen construction, Dana Hill for sample handling and Angela Bosco-Lauth, Airm Tolnay and Paul Gordy for animal care at CSU and William O'Connor for proof-reading. Additionally, we would like to thank the USDA Veterinary Services' Dr. Jack Rhyan and Matt McCollum for the use of their animal facilities and the Colorado Division of Wildlife for transport/import permits.

## Author Contributions

Conceived and designed the experiments: TAN TRS TG TR KV. Performed the experiments: TAN TRS TR KO JB MZ CMR CH BM RB. Analyzed the data: TAN JB KO GT MZ. Contributed reagents/materials/analysis tools: TAN TRS AB KO GT RB MZ KV EH. Wrote the paper: TAN TRS TR KO JB MZ KV.

## References

- Saunders SE, Bartelt-Hunt SL, Bartz JC (2012) Occurrence, transmission, and zoonotic potential of chronic wasting disease. *Emerg Infect Dis* 18: 369–376.
- Prusiner SB (1982) Novel proteinaceous infectious particles cause scrapie. *Science* 216: 136–144.
- Miller MW, Williams ES (2003) Prion disease: horizontal prion transmission in mule deer. *Nature* 425: 35–36.
- Miller MW, Williams ES, Hobbs NT, Wolfe LL (2004) Environmental sources of prion transmission in mule deer. *Emerg Infect Dis* 10: 1003–1006.
- Haley NJ, Seelig DM, Zabel MD, Telling GC, Hoover EA (2009) Detection of CWD prions in urine and saliva of deer by transgenic mouse bioassay. *PLoS One* 4: e4848.
- Pulford B, Spraker TR, Wyckoff AC, Meyerett C, Bender H, *et al.* (2012) Detection of PrPCWD in feces from naturally exposed Rocky Mountain elk (*Cervus elaphus nelsoni*) using protein misfolding cyclic amplification. *J Wildl Dis* 48: 425–434.
- Mathiason CK, Powers JG, Dahmes SJ, Osborn DA, Miller KV, *et al.* (2006) Infectious prions in the saliva and blood of deer with chronic wasting disease. *Science* 314: 133–136.
- Karberg NJ, Lilleskov EA (2009) White-tailed deer (*Odocoileus virginianus*) fecal pellet decomposition is accelerated by the invasive earthworm *Lumbricus terrestris*. *Biological Invasions* 11: 761–767.
- Johnson CJ, Phillips KE, Schramm PT, McKenzie D, Aiken JM, *et al.* (2006) Prions adhere to soil minerals and remain infectious. *PLoS Pathog* 2: e32.
- Wiggins RC (2009) Prion stability and infectivity in the environment. *Neurochem Res* 34: 158–168.
- Rigou P, Rezaei H, Grosclaude J, Staunton S, Quiquampoix H (2006) Fate of prions in soil: adsorption and extraction by electroelution of recombinant ovine prion protein from montmorillonite and natural soils. *Environ Sci Technol* 40: 1497–1503.
- Saunders SE, Yuan Q, Bartz JC, Bartelt-Hunt S (2011) Effects of solution chemistry and aging time on prion protein adsorption and replication of soil-bound prions. *PLoS One* 6: e18752.
- Arthur WJ, III, and Allderge A.W. (1979) Soil Ingestion by Mule Deer in Northcentral Colorado. *Journal of Range Management* 32: 67–71.
- Sigurdson CJ, Williams ES, Miller MW, Spraker TR, O'Rourke KI, *et al.* (1999) Oral transmission and early lymphoid tropism of chronic wasting disease PrPres in mule deer fawns (*Odocoileus hemionus*). *J Gen Virol* 80 (Pt 10): 2757–2764.
- Fox KA, Jewell JE, Williams ES, Miller MW (2006) Patterns of PrPCWD accumulation during the course of chronic wasting disease infection in orally inoculated mule deer (*Odocoileus hemionus*). *J Gen Virol* 87: 3451–3461.
- Johnson CJ, Pedersen JA, Chappell RJ, McKenzie D, Aiken JM (2007) Oral transmissibility of prion disease is enhanced by binding to soil particles. *PLoS Pathog* 3: e93.
- Hewitt D, G., editor (2011) *Biology and Management of White-tailed Deer*. Boca Raton, FL: CRC Press. 674 p.
- Twieill DEaT, JW, editor (2002) *North American Elk Ecology and Management*. Washington: Smithsonian Institution Press. 962 p.
- Bessen RA, Martinka S, Kelly J, Gonzalez D (2009) Role of the lymphoreticular system in prion neuroinvasion from the oral and nasal mucosa. *J Virol* 83: 6435–6445.
- Sbriccoli M, Cardone F, Valanzano A, Lu M, Graziano S, *et al.* (2009) Neuroinvasion of the 263K scrapie strain after intranasal administration occurs through olfactory-unrelated pathways. *Acta Neuropathol* 117: 175–184.
- Kincaid AE, Bartz JC (2007) The nasal cavity is a route for prion infection in hamsters. *J Virol* 81: 4482–4491.
- Denkers ND, Hayes-Klug J, Anderson KR, Seelig DM, Haley NJ, *et al.* (2013) Aerosol transmission of chronic wasting disease in white-tailed deer. *J Virol* 87: 1890–1892.
- Nichols TA, Pulford B, Wyckoff AC, Meyerett C, Michel B, *et al.* (2009) Detection of protease-resistant cervid prion protein in water from a CWD-endemic area. *Prion* 3: 171–183.
- Gee GW, Bauder J.W. (1986) Particle size analysis. In: Klute A, editor. *Methods of Soil Analysis*, Part 1. Second ed. pp. 399–404.
- Bian J, Napier D, Khaychuck V, Angers R, Graham C, *et al.* (2010) Cell-based quantification of chronic wasting disease prions. *J Virol* 84: 8322–8326.
- Michel B, Meyerett-Reid C, Johnson T, Ferguson A, Wyckoff C, *et al.* (2012) Incunabular immunological events in prion trafficking. *Sci Rep* 2: 440.
- Spraker TR, O'Rourke KI, Balachandran A, Zink RR, Cummings BA, *et al.* (2002) Validation of monoclonal antibody F99/97.6.1 for immunohistochemical staining of brain and tonsil in mule deer (*Odocoileus hemionus*) with chronic wasting disease. *J Vet Diagn Invest* 14: 3–7.
- Mathiason CK, Hays SA, Powers J, Hayes-Klug J, Langenberg J, *et al.* (2009) Infectious prions in pre-clinical deer and transmission of chronic wasting disease solely by environmental exposure. *PLoS One* 4: e5916.
- Strotmann J (2001) Targeting of olfactory neurons. *Cell Mol Life Sci* 58: 531–537.
- Le Pichon CE, Firestein S (2008) Expression and localization of the prion protein PrP(C) in the olfactory system of the mouse. *J Comp Neurol* 508: 487–499.
- Flexner S, Clark P.F. (1912) A note on the mode of infection in epidemic poliomyelitis. *Proc Soc Expl Biol Med* 10: 1–2.
- Esiri MM, Tomlinson AH (1984) Herpes simplex encephalitis. Immunohistological demonstration of spread of virus via olfactory and trigeminal pathways after infection of facial skin in mice. *J Neurol Sci* 64: 213–217.
- Lafay F, Coulon P, Astic L, Saucier D, Riche D, *et al.* (1991) Spread of the CVS strain of rabies virus and of the avirulent mutant AvO1 along the olfactory pathways of the mouse after intranasal inoculation. *Virology* 183: 320–330.
- Larsson P, Tjalve H (2000) Intranasal instillation of aflatoxin B(1) in rats: bioactivation in the nasal mucosa and neuronal transport to the olfactory bulb. *Toxicol Sci* 55: 383–391.
- Bessen RA, Shearin H, Martinka S, Boharski R, Lowe D, *et al.* (2010) Prion shedding from olfactory neurons into nasal secretions. *PLoS Pathog* 6: e1000837.
- Klaassen CD, editor (2001) *Casarett and Doull's Toxicology. The Basic Science of Poisons*. Sixth ed. New York: McGraw-Hill. 1236 p.
- Feng SS, Mei L, Anitha P, Gan CW, Zhou W (2009) Poly(lactide)-vitamin E derivative/montmorillonite nanoparticle formulations for the oral delivery of Docetaxel. *Biomaterials* 30: 3297–3306.
- Kawase M, Hayashi Y, Kinoshita F, Yamato E, Miyazaki J, *et al.* (2004) Protective effect of montmorillonite on plasmid DNA in oral gene delivery into small intestine. *Biol Pharm Bull* 27: 2049–2051.
- Dong Y, Feng SS (2005) Poly(d,l-lactide-co-glycolide)/montmorillonite nanoparticles for oral delivery of anticancer drugs. *Biomaterials* 26: 6068–6076.
- Jani PU, McCarthy D.E., Florence A.T. (1992) Nanosphere and microsphere uptake via Peyer's patches: observation of the rate of uptake in the rat after a single oral dose. *International Journal of Pharmaceutics*: 239–246.

41. Rajapaksa TE, Stover-Hamer M, Fernandez X, Eckelhoefer HA, Lo DD (2010) Claudin 4-targeted protein incorporated into PLGA nanoparticles can mediate M cell targeted delivery. *J Control Release* 142: 196–205.
42. Upham JW (2003) The role of dendritic cells in immune regulation and allergic airway inflammation. *Respirology* 8: 140–148.
43. Huang FP, Farquhar CF, Mabbott NA, Bruce ME, MacPherson GG (2002) Migrating intestinal dendritic cells transport PrP(Sc) from the gut. *J Gen Virol* 83: 267–271.
44. Sansonetti PJ, Phalipon A (1999) M cells as ports of entry for enteroinvasive pathogens: mechanisms of interaction, consequences for the disease process. *Semin Immunol* 11: 193–203.
45. Annacker O, Coombes JL, Malmstrom V, Uhlig HH, Bourne T, et al. (2005) Essential role for CD103 in the T cell-mediated regulation of experimental colitis. *J Exp Med* 202: 1051–1061.
46. Jepson MA, Clark MA, Foster N, Mason CM, Bennett MK, et al. (1996) Targeting to intestinal M cells. *J Anat* 189 (Pt 3): 507–516.
47. Rescigno M, Urbano M, Valzasina B, Francolini M, Rotta G, et al. (2001) Dendritic cells express tight junction proteins and penetrate gut epithelial monolayers to sample bacteria. *Nat Immunol* 2: 361–367.
48. Xia W, Pinto CE, Kradin RL (1995) The antigen-presenting activities of Ia+ dendritic cells shift dynamically from lung to lymph node after an airway challenge with soluble antigen. *J Exp Med* 181: 1275–1283.
49. Huang FP, MacPherson GG (2004) Dendritic cells and oral transmission of prion diseases. *Adv Drug Deliv Rev* 56: 901–913.
50. Donaldson DS, Kobayashi A, Ohno H, Yagita H, Williams IR, et al. (2012) M cell-depletion blocks oral prion disease pathogenesis. *Mucosal Immunol* 5: 216–225.
51. Mabbott NA (2012) Prion pathogenesis and secondary lymphoid organs (SLO): Tracking the SLO spread of prions to the brain. *Prion* 6: 322–333.
52. Heppner FL, Christ AD, Klein MA, Prinz M, Fried M, et al. (2001) Trans epithelial prion transport by M cells. *Nat Med* 7: 976–977.
53. Holt PG, Stumbles PA (2000) Regulation of immunologic homeostasis in peripheral tissues by dendritic cells: the respiratory tract as a paradigm. *J Allergy Clin Immunol* 105: 421–429.
54. Hartmann E, Graefe H, Hopert A, Pries R, Rothenfusser S, et al. (2006) Analysis of plasmacytoid and myeloid dendritic cells in nasal epithelium. *Clin Vaccine Immunol* 13: 1278–1286.
55. KleinJan A, Willart M, van Rijt LS, Braunstahl GJ, Leman K, et al. (2006) An essential role for dendritic cells in human and experimental allergic rhinitis. *J Allergy Clin Immunol* 118: 1117–1125.
56. McWilliam AS, Nelson DJ, Holt PG (1995) The biology of airway dendritic cells. *Immunol Cell Biol* 73: 405–413.
57. Holt PG, Schon-Hegrad MA, Phillips MJ, McMenamin PG (1989) Ia-positive dendritic cells form a tightly meshed network within the human airway epithelium. *Clin Exp Allergy* 19: 597–601.
58. Takano K, Kojima T, Go M, Murata M, Ichimiya S, et al. (2005) HLA-DR- and CD11c-positive dendritic cells penetrate beyond well-developed epithelial tight junctions in human nasal mucosa of allergic rhinitis. *J Histochem Cytochem* 53: 611–619.
59. Kincaid AE, Hudson KF, Richey MW, Bartz JC (2012) Rapid Trans epithelial Transport of Prions Following Inhalation. *J Virol* 86: 12741–12740.
60. Yeo NK, Hwang YJ, Kim ST, Kwon HJ, Jang YJ (2010) Asian sand dust enhances rhinovirus-induced cytokine secretion and viral replication in human nasal epithelial cells. *Inhal Toxicol* 22: 1038–1045.
61. Nelson HS (2007) Advances in upper airway diseases and allergen immunotherapy. *J Allergy Clin Immunol* 119: 872–880.
62. KleinJan A (2011) The crucial role of dendritic cells in rhinitis. *Curr Opin Allergy Clin Immunol* 11: 12–17.
63. Keeler AP, Bernarsky N.L., Huffman J.E., Roscoe D.E. (2011) A survey of the prion protein gene heterogeneity in New Jersey white-tailed deer (*Odocoileus virginianus*). *Journal of the Pennsylvania Academy of Science* 85: 183–187.
64. Kelly AC, Mateus-Pinilla NE, Diffendorfer J, Jewell E, Ruiz MO, et al. (2008) Prion sequence polymorphisms and chronic wasting disease resistance in Illinois white-tailed deer (*Odocoileus virginianus*). *Prion* 2: 28–36.
65. Robinson SJ, Samuel MD, Johnson CJ, Adams M, McKenzie DI (2012) Emerging prion disease drives host selection in a wildlife population. *Ecol Appl* 22: 1050–1059.
66. Sigurdson CJ, Barillas-Mury C, Miller MW, Oesch B, van Keulen LJ, et al. (2002) PrP(CWD) lymphoid cell targets in early and advanced chronic wasting disease of mule deer. *J Gen Virol* 83: 2617–2628.
67. Miller MW, Wolfe LL, Sirochman TM, Sirochman MA, Jewell JE, et al. (2012) Survival patterns in white-tailed and mule deer after oral inoculation with a standardized, conspecific prion dose. *J Wildl Dis* 48: 526–529.