

University of Nebraska - Lincoln

DigitalCommons@University of Nebraska - Lincoln

---

Papers in Natural Resources

Natural Resources, School of

---

9-1-2022

## Estimating the Burden of Heat-Related Illness Morbidity Attributable to Anthropogenic Climate Change in North Carolina

Jagadeesh Puvvula

Azar M. Abadi

Kathryn C. Conlon

Jared J. Rennie

Stephanie C. Herring

*See next page for additional authors*

Follow this and additional works at: <https://digitalcommons.unl.edu/natrespapers>



Part of the [Natural Resources and Conservation Commons](#), [Natural Resources Management and Policy Commons](#), and the [Other Environmental Sciences Commons](#)

---

This Article is brought to you for free and open access by the Natural Resources, School of at DigitalCommons@University of Nebraska - Lincoln. It has been accepted for inclusion in Papers in Natural Resources by an authorized administrator of DigitalCommons@University of Nebraska - Lincoln.

---

**Authors**

Jagadeesh Puvvula, Azar M. Abadi, Kathryn C. Conlon, Jared J. Rennie, Stephanie C. Herring, Laurie Thie, Max J. Rudolph, Rebecca Owen, and Jesse E. Bell

**Key Points:**

- Quantified the association between daily maximum temperature and heat-related illness (HRI) emergency room visits
- During 2011–2016, 15% of the HRI emergency room visits in North Carolina were attributable to anthropogenic climate change
- HRI emergencies are projected to increase by 32% during 2036–2065 and 79% during 2070–2099, assuming RCP8.5 emissions compared to RCP4.5

**Supporting Information:**

Supporting Information may be found in the online version of this article.

**Correspondence to:**

J. Puvvula and J. E. Bell,  
[jagadeesh.puvvula@unmc.edu](mailto:jagadeesh.puvvula@unmc.edu);  
[jesse.bell@unmc.edu](mailto:jesse.bell@unmc.edu)

**Citation:**

Puvvula, J., Abadi, A. M., Conlon, K. C., Rennie, J. J., Herring, S. C., Thie, L., et al. (2022). Estimating the burden of heat-related illness morbidity attributable to anthropogenic climate change in North Carolina. *GeoHealth*, 6, e2022GH000636. <https://doi.org/10.1029/2022GH000636>

Received 4 APR 2022

Accepted 1 SEP 2022

**Author Contributions:**

**Conceptualization:** Jagadeesh Puvvula, Azar M. Abadi, Kathryn C. Conlon, Jared J. Rennie, Stephanie C. Herring, Rebecca Owen, Jesse E. Bell

**Data curation:** Jagadeesh Puvvula, Azar M. Abadi, Jared J. Rennie

**Formal analysis:** Jagadeesh Puvvula




**Funding acquisition:** Jesse E. Bell

**Methodology:** Jagadeesh Puvvula, Kathryn C. Conlon, Jesse E. Bell

**Project Administration:** Jesse E. Bell

© 2022. The Authors. GeoHealth published by Wiley Periodicals LLC on behalf of American Geophysical Union. This is an open access article under the terms of the [Creative Commons Attribution License](https://creativecommons.org/licenses/by/4.0/), which permits use, distribution and reproduction in any medium, provided the original work is properly cited.

## Estimating the Burden of Heat-Related Illness Morbidity Attributable to Anthropogenic Climate Change in North Carolina

Jagadeesh Puvvula<sup>1</sup> , Azar M. Abadi<sup>1</sup> , Kathryn C. Conlon<sup>2</sup> , Jared J. Rennie<sup>3</sup>, Stephanie C. Herring<sup>4</sup>, Lauren Thie<sup>5</sup>, Max J. Rudolph<sup>6</sup>, Rebecca Owen<sup>7</sup>, and Jesse E. Bell<sup>1,8,9</sup>

<sup>1</sup>Department of Environmental, Agricultural and Occupational Health, College of Public Health, University of Nebraska Medical Center, Omaha, NE, USA, <sup>2</sup>Department of Public Health Sciences, University of California Davis, Davis, CA, USA, <sup>3</sup>NOAA/National Centers for Environmental Information, Asheville, NC, USA, <sup>4</sup>NOAA/National Centers for Environmental Information, Boulder, CO, USA, <sup>5</sup>Division of Public Health, Occupational & Environmental Epidemiology, North Carolina Department of Health and Human Services, Raleigh, NC, USA, <sup>6</sup>Heider College of Business, Creighton University, Omaha, NE, USA, <sup>7</sup>HealthCare Analytical Solutions, INC, Bend, OR, USA, <sup>8</sup>School of Natural Resources, University of Nebraska-Lincoln, Lincoln, NE, USA, <sup>9</sup>Daugherty Water for Food Global Institute, University of Nebraska, Lincoln, NE, USA

**Abstract** Climate change is known to increase the frequency and intensity of hot days (daily maximum temperature  $\geq 30^{\circ}\text{C}$ ), both globally and locally. Exposure to extreme heat is associated with numerous adverse human health outcomes. This study estimated the burden of heat-related illness (HRI) attributable to anthropogenic climate change in North Carolina physiographic divisions (Coastal and Piedmont) during the summer months from 2011 to 2016. Additionally, assuming intermediate and high greenhouse gas emission scenarios, future HRI morbidity burden attributable to climate change was estimated. The association between daily maximum temperature and the rate of HRI was evaluated using the Generalized Additive Model. The rate of HRI assuming natural simulations (i.e., absence of greenhouse gas emissions) and future greenhouse gas emission scenarios were predicted to estimate the HRI attributable to climate change. Over 4 years (2011, 2012, 2014, and 2015), we observed a significant decrease in the rate of HRI assuming natural simulations compared to the observed. About 3 out of 20 HRI visits are attributable to anthropogenic climate change in Coastal (13.40% [IQR:  $-34.90, 95.52$ ]) and Piedmont (16.39% [IQR:  $-35.18, 148.26$ ]) regions. During the future periods, the median rate of HRI was significantly higher (78.65%: Coastal and 65.85%: Piedmont), assuming a higher emission scenario than the intermediate emission scenario. We observed significant associations between anthropogenic climate change and adverse human health outcomes. Our findings indicate the need for evidence-based public health interventions to protect human health from climate-related exposures, like extreme heat, while minimizing greenhouse gas emissions.

**Plain Language Summary** We conducted this study to understand how current and future changes in temperature caused by human-caused climate change impacts human health. To complete this work, we developed a statistical model to estimate the heat-related emergency room visits for two regions of North Carolina. We applied this statistical model to changes in temperature that have occurred during the last century that are attributed to human-caused changes in greenhouse gases. We also used this model to look at future changes in temperature over the next century based on different greenhouse gas emission scenarios. Using the statistical model that we trained using the actual observations during 2011–2016, we estimated the HRI risk attributable to climate change during 2011, 2012, 2014, 2015, and for the future. Our results suggest that about 3 out of 20 heat-related emergency room visits during 2011–2016 were attributable to human-caused climate change. In addition, the rate of heat-related emergency room visits with a higher greenhouse gas emission scenario in the future was significantly greater. Our results show that human-caused climate change is currently impacting heat-related hospitalizations, and these impacts are projected to continue in the future.

### 1. Introduction

Since the mid-twentieth century, the frequency and duration of hot days have increased globally due to anthropogenic climate change (Hoegh-Guldberg et al., 2018). Global temperature is very likely to increase up to  $1.5^{\circ}\text{C}$ – $1.6^{\circ}\text{C}$  during 2021–2040,  $1.6^{\circ}\text{C}$ – $2.4^{\circ}\text{C}$  during 2041–2060, and  $1.4^{\circ}\text{C}$ – $4.4^{\circ}\text{C}$  during 2081–2100, relative

**Resources:** Kathryn C. Conlon, Lauren Thie, Jesse E. Bell

**Supervision:** Kathryn C. Conlon, Jesse E. Bell

**Validation:** Azar M. Abadi, Kathryn C. Conlon, Jared J. Rennie, Stephanie C. Herring, Lauren Thie, Max J. Rudolph, Rebecca Owen, Jesse E. Bell

**Writing – original draft:** Jagadeesh Puvvula

**Writing – review & editing:** Jagadeesh Puvvula, Azar M. Abadi, Kathryn C. Conlon, Jared J. Rennie, Stephanie C. Herring, Lauren Thie, Max J. Rudolph, Rebecca Owen, Jesse E. Bell

to 1850–1900 (IPCC, 2021). These increases in temperature since the mid-twentieth century are primarily the result of anthropogenic greenhouse gas emissions (IPCC, 2021). Mora, et al. (2017) estimate that roughly 30% of the current global population is exposed to extreme heat conditions; this number is expected to increase to 50%–75% by 2100 (Mora et al., 2017).

Exposure to extreme heat leads to heat-related morbidity and mortality. Extreme heat outcomes can be characterized as direct (e.g., heat-related illness [HRI]), or indirect (e.g., exacerbation of cardiovascular, respiratory, renal, endocrine, and mental health conditions) (Bell et al., 2018; Ebi, Capon, et al., 2021; Sarofim et al., 2016). Failure to acclimatize during extreme heat conditions can result in HRI ranging from muscle cramps, heat exhaustion, and heat stroke (Danzl, 2018). HRI, if untreated, can lead to life-threatening conditions (LoVecchio, 2016; Nemer & Juarez, 2019). In the United States (US), heat-related fatalities are more common than deaths due to other natural disasters (NOAA, 2019). In the US, there are an average of 702 heat-related deaths per year (Vaidyanathan et al., 2020). There is a potential imbalance between heat-related mortality and morbidity, posing an exponentially higher number of heat-related emergencies. For example, during a 4-day heat wave event in North Carolina, there were 556 HRI emergencies compared to 1 heat-related death (NC-DHHS, 2016). The magnitude of the HRI emergencies compared to mortality demonstrate the need to focus on morbidity compared to mortality.

The role of climate change has been associated with the increasing trend of heat-related mortality and morbidity (Bell et al., 2018; Christidis et al., 2019; Ebi, Vanos, et al., 2021). Evidence-based climate detection and attribution play a key role in characterizing the changes in natural climate variability that are attributable to human activities (Ebi et al., 2017, 2020). There is strong evidence supporting the association between future climate change and mortality (Conlon et al., 2016; Gosling et al., 2017; Guo et al., 2018; Lay et al., 2018). At the same time, attribution of human health risk to anthropogenic climate change is limited to considering mortality as a health outcome (Mitchell et al., 2016; Vicedo-Cabrera et al., 2021).

It is common for attribution analyses to investigate heat-related mortality, providing insight into the magnitude of extreme heat events on the most serious health outcomes. Based on the contrast between the frequency of heat-related mortality and morbidity in North Carolina, we hypothesized that using heat-related mortality would be an underestimate to quantify human health risks associated with climate change. We investigate heat-related morbidity to better understand the scope of human health burden associated with climate change. This study estimated the HRI attributable to anthropogenic climate change. Additionally, future HRI burden attributable to climate change was estimated using the climate projections driven by representative concentration pathways (RCPs). The RCPs are greenhouse gas concentration trajectories adopted by the IPCC that are used for climate modeling (IPCC, 2014). Future climate change is typically represented using four RCP scenarios, RCP2.6 is a stringent mitigation scenario, RCP4.5 and RCP6.0 are intermediate scenarios, and RCP8.5 is a scenario with very high greenhouse gas emissions (IPCC, 2014). This study includes two of the four RCP scenarios, comparing the intermediate emission scenario (RCP4.5) and higher emission scenario (RCP8.5).

This study is structured into three sections. In the first section, we aim to evaluate the association between heat metrics and HRI morbidity to estimate the HRI morbidity attributable to climate change. In the second section, we estimated the HRI attributable to the current (2011, 2012, 2014, and 2015) levels of anthropogenic climate change. The third section includes estimating the HRI associated with future climate change under two greenhouse gas emission scenarios (RCPs).

## 2. Materials and Methods

This study includes three analytic components: (a) Modeling and optimization of an epidemiologic model to estimate the rate of HRI emergency department visits, (b) Estimating the HRI burden attributable to current anthropogenic climate change, and (c) Quantifying the HRI burden associated with future climate change.

### 2.1. Study Area

North Carolina has three physiographic regions with distinct climatological profiles: Coastal, Piedmont, and Mountain regions. The Coastal region includes 41 counties, Piedmont consists of 34 counties, and the Mountain contains 25 counties. Due to distinct weather conditions experienced by the population living in these physiographic regions, most of the heat-related research has been conducted using these sub-divisions (NC-DHHS, 2015). The

study period includes summer months (1 May to 30 September) over 5 years from 2011 to 2016. Data for 2013 were unavailable and is excluded from the analysis.

## 2.2. HRI Morbidity Data

The HRI data were obtained from the North Carolina Department of Health and Human Services (NC DHHS) that has partnered with 124 hospitals to collect statewide emergency department (ED) visit data to provide real-time, electronic public health surveillance, which is stored in the North Carolina Disease Tracking and Epidemiologic Collection Tool (NC DETECT, 2021). Heat-related illnesses were identified using ICD-9 CM codes with E992/E900.0/E900.0/E900; ICD-10 CM codes within T67/X30/X32; and various keywords from the chief complaint and triage notes (Harduar Morano & Waller, 2017; NC-DETECT, n.d). We obtained daily aggregated counts of HRI ED visits. Days with fewer than five HRI cases were suppressed to maintain the confidentiality of patient identifiable information.

Decennial census population data at the county level from 2010 were aggregated to the three regions in North Carolina. Equation 1 was used to estimate the rate of HRI morbidity per study region.

$$\text{HRI morbidity rate} = \frac{\text{Count HRI emergency department visits}}{\text{population at risk}} * 100,000 \quad (1)$$

## 2.3. Observed Meteorological Data

Daily temperature data (mean ( $t_{\text{mean}}$ ), minimum ( $t_{\text{min}}$ ), and maximum ( $t_{\text{max}}$ )) from the Global Historical Climatology Network-Daily (GHCN-D) database were extracted and aggregated by region. The GHCN-D data set contains daily temperature measurements based on approximately five stations per region (Houston et al., 2012; NOAA, n.d). Daily temperature measurements were homogenized to account for instrumentation and processing station observations (Rennie et al., 2019). Dew point data was obtained from the Parameter-elevation Regressions on Independent Slopes Model (PRISM) data set (Model, 2019). The relative humidity (RH), maximum apparent temperature (MAT), US NWS/Steadman's heat index (NWS\_HI & Steadmans\_HI), humidex, thermal discomfort index (TDI), and Excess Heat Factor (EHF) were computed by study region (Anderson et al., 2013; Baccini et al., 2008; Castelhana; & Laboclima, 2017; Langlois et al., 2013; PRISM, n.d).

## 2.4. Natural Simulations

The natural simulations are an estimate of daily maximum temperature ( $t_{\text{max-NS}}$ ) in the absence of human-caused greenhouse gas emissions. The natural simulations are based on the greenhouse gas emissions similar to the preindustrial period (1980s) and not adjusted for stratospheric aerosol burden, solar luminosity (Stone et al., 2019). The daily maximum temperature observations assuming the absence of human-caused greenhouse gas emissions (similar to preindustrial period) were obtained from the data set developed by the Climate of the twentieth Century Plus Detection and Attribution (C20C + D&A) Project (C20C + D&A, n.d, Stone et al., 2019). The C20C + D&A project is built on an ensemble of multiple dynamic models based on the atmosphere-land system. Due to lack of data, we excluded the year 2013 and 2016 in the analysis. We extracted daily maximum temperatures during the summer seasons of 2011, 2012, 2014, and 2015.

## 2.5. Climate Projections

Localized and bias-corrected climate projections were obtained from the Localized Constructed Analogs (LOCA) database (LOCA, n.d; Pierce et al., 2014). The LOCA data set is statistically downscaled from the Climate Model Intercomparison Project 5 (CMIP5) and corrected for bias using constructed analogs (Pierce et al., 2014). The current study is based on study regions, amounting to more coarse geographies. The use of LOCA data with 1/16° resolution allowed us to assign localized temperature projections to finer geographies. We focused on the Community Climate System Model version-4.0 (CCSM4) and Geophysical Fluid Dynamics Laboratory (GFDL) model outputs as these models were outperformed compared to other climate models in the Southeastern United States (Zhang et al., 2013).

The climate projection data set contains maximum temperature aggregated for three time periods: (a) Baseline (2011–2016), (b) Mid-century (2036–2065), and (c) Late century (2070–2099). The maximum temperature ( $t_{\max\text{-FS}}$ ) was estimated for each period assuming intermediate (RCP4.5) and high-emission (RCP8.5) scenarios.

## 2.6. Analysis

The analytic data set contains the rate of HRI,  $t_{\max}$ ,  $t_{\text{mean}}$ ,  $t_{\min}$ ,  $t_{\max}$ , RH, MAT, NWS\_HI, Steadman\_HI, humidex, TDI, and EHF at a daily scale (S 1). Additionally, we created a nominal variable to describe 7 days of the week (DOW), a binary variable to identify weekend or weekday (Wday), as well as a nominal variable representing month and year.

### 2.6.1. Evaluating the Relationship Between Heat Metrics and HRI Morbidity

Spearman correlations were run to determine temperature metrics to include in further analysis. Five of 10 variables ( $t_{\max}$ ,  $t_{\text{mean}}$ , NWS\_HI, Steadman\_HI, and MAT) had a correlation coefficient greater than 55% and these metrics were considered for evaluating association with HRI (S 2). The exploratory analysis suggested a nonlinear relationship between the rate of HRI and heat metrics. The nonlinear relationship between the HRI rate and heat metrics was evaluated using the Generalized Additive Model (GAM)—“mgcv” package version 1.8–34 (Wood, 2021) and distributed lag nonlinear model (DLNM) approach (the “dlnm” R package version 2.4.5, Gasparrini et al., 2021).

GAM is a semi-parametric framework to address the nonlinearity using smoothing splines (Dominici & Peng, 2008). Smoothing term was considered for the heat metric using cubic regression bases, with up to 5 knots (Wood, 2017b). The number of smoothing parameters for heat metrics was estimation using Generalized Cross Validation (GCV) method (Wood, 2017b). The associations were evaluated assuming gamma distribution and log link (Wood, 2017a). Additionally, we included day of week, month, and year, as covariates to adjust for potential temporal autocorrelation. To identify a heat metric as a predictor in our nested model with a smaller residual sum of square, we compared the Akaike Information Criterion (AIC) and *R*-squared values. The statistical model using  $t_{\max}$  outperformed to estimate the rate of HRI compared to other heat metrics (Equation 2).

$$\log(\mathbb{E}[\text{HRI morbidity}]) = \sum_{j=1}^n b_j(t_{\max}) \beta_j + \text{wDay} + \text{Month} + \text{Year} + \varepsilon \quad (2)$$

The distributive effect of heat metrics on HRI was estimated using DLNM (Gasparrini, 2011). The DLNM follows an interrupted time series approach, where daily HRI ED visits were assumed to follow the Poisson distribution and were fit using the GAM, controlling for seasonal effect. We smoothed the heat metric exposure variable using cubic splines with 5 knots at equally spaced heat metric values. Using the “crossbasis” function, we create a basis matrix between the heat metric and 5 lag days to model the association in each dimension. The association between heat metrics and HRI was evaluated for up to 5 lag days. DLNM was implemented using the “gam” function, with daily HRI count as the outcome and the heat metric cross-basis matrix. The DLNM approach was implemented using “dlnm” package version 2.4.5, and dependencies using “spline,” “mgcv” packages (Gasparrini et al., 2021).

We then estimated the relative risk to daily maximum temperature by 0–5 lag days using the “crosspred” function. The risk estimates for daily maximum temperature were predicted using the 70th percentile value (32°C) as a reference.

### 2.6.2. Attributing the Burden of HRI Morbidity to Current Anthropogenic Climate Change

The statistical model was trained by physiographic regions (Equation 2.) using  $t_{\max}$ , time series variables to estimate the rate of HRI. The model performance metrics were optimum while using three cubic regression splines for  $t_{\max}$  for the Coastal region and four for Piedmont. The daily rate of HRI was estimated corresponding to the daily  $t_{\max\text{-NS}}$  values. The percentage difference between the observed and estimated HRI rates assuming natural simulation was considered as the burden of HRI attributable to climate change. The mean difference between the daily rate of HRI between observed and natural simulation was tested using paired *t*-test. Additionally, the frequency of hot days between natural simulations and actual observations was compared using the chi-square test. The percent of HRI attributable to anthropogenic climate change is expressed as median percent per year and interquartile range (IQR).

**Table 1**  
Rate of HRI Morbidity per 100,000 Persons

	2011	2012	2014	2015	2016	Study period
Coastal	57.71	50.05	35.46	82.59	72.96	54.52
Piedmont	39.12	33.66	19.00	45.69	45.22	34.27

Note. The population at risk was estimated using 2010 decennial population estimates per physiographic region in North Carolina.

### 2.6.3. Projecting HRI Under Future Climate Change Scenarios

Using  $t_{\max}$  as a predictor, we trained a statistical model (Equation 3.) by physiographic regions to estimate the rate of HRI. Future HRI was estimated over three different 30-year periods (baseline, mid-century, and late century), focusing on RCP4.5 and RCP8.5 scenarios. The difference between HRI across two emission scenarios was evaluated using paired  $t$ -test and the differences between HRI across the three time periods were assessed using Analysis of variance.

$$\text{Log}(E[\text{HRI morbidity}]) = \sum_{j=1}^n b_j (t_{\max}) \beta_j + \varepsilon \quad (3)$$

## 3. Results

During the study period, 28.81% (219) of Coastal and 28.94% (220) of Piedmont regional observations were suppressed. The suppressed data were imputed with the median value (3) of the suppressed range. The Mountain region was excluded from the study due to poor data quality (50.13% [381] suppressed).

The mean HRI rate was 54.52 per 100,000 and 34.27 in the Coastal and Piedmont regions, respectively. The annual HRI rate was consistently higher in the Coastal region than in Piedmont. In both study regions, the rate of HRI was higher (Coastal: 40.94% higher; Piedmont: 28.47% higher) during the summer of 2015, compared to the study period (Table 1). The increase in the rate of HRI in 2015 could be due to a 14-day heat event with  $t_{\max}$  exceeding 32°C, from 13 June to 27 June 2015.

### 3.1. Association Between Daily Maximum Temperature and HRI

The nonlinear association between HRI and  $t_{\max}$  was established using the GAM (S 3-A). From the model diagnostics, we observed that about 80% of the deviance in HRI could be explained by Equation 2 (S 3-B). Due to a higher number of observations with  $t_{\max}$  between 26.7°C and 35°C, there is a narrow residual confidence interval that reflects lower prediction uncertainty.

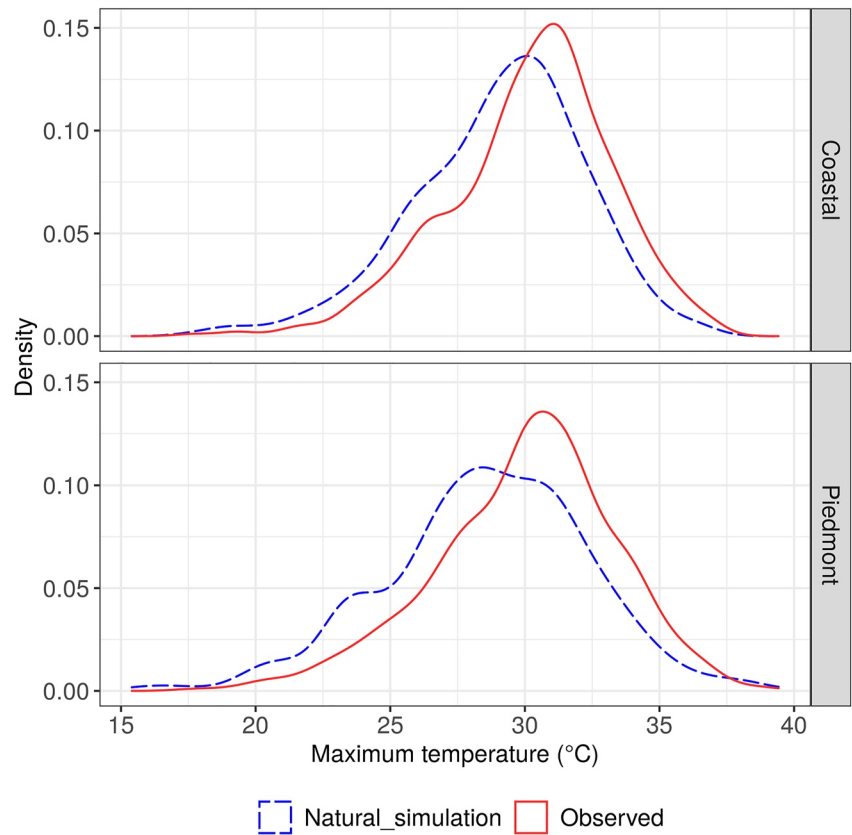
The results from the DLNM suggest that the relative risk of HRI significantly increased with  $t_{\max}$  of more than 35°C. The HRI relative risk was higher during the day of exposure than the following days (S 4). When the  $t_{\max}$  was recorded as 35°C, the HRI relative risk declined from about 2 to 1.2 from the day of exposure to the following day, potentially indicating a harvesting—or displacement—effect. It showed non-significant results during lag 2–5 days in the Coastal and Piedmont regions (S 5). The results from the DLNM suggest a negligible distributive effect of daily maximum temperature exposure on HRI morbidity.

As the HRI risk was higher during the day of exposure than in the latent period, further analysis is based on the same-day exposure-outcome relationship. As the primary goal of the current work was to build a prediction model rather effect estimation, the GAM (Equations 2 and 3) was used to estimate the rate of HRI.

### 3.2. Burden of HRI Attributable to Anthropogenic Climate Change

Over the 4 years studied (2011, 2012, 2014, and 2015), the frequency of hot days was about 30% higher in both the Coastal and Piedmont regions, among the actual observations than natural simulations ( $p$ -value < 0.001) (Figure 1). We observed a significant reduction in the daily mean rate of HRI morbidity in the Coastal (estimated assuming natural simulation: 0.32 per 100,000, observed: 0.40 per 100,000;  $p$ -value < 0.001) and Piedmont (estimated assuming natural simulation: 0.19 per 100,000, observed: 0.24 per 100,000;  $p$ -value < 0.001) assuming natural scenario than actual observations. In the Coastal region, 13.40% (IQR: −34.90,95.52) of the HRI morbidity is attributable to anthropogenic climate change and 16.39% (IQR: −35.18,148.26) in the Piedmont region (Figure 2). Based on our attribution analysis, about 83 HRI ED visits per summer season (152 days) in the Coastal region and 85 in Piedmont could be attributed to anthropogenic climate change.





**Figure 1.** Comparison of the daily maximum temperature (actual observations vs. natural scenario). Observed data were obtained from the GHCN-D database. Simulated daily temperature data assuming without anthropogenic climate change (natural simulation) were obtained from the Climate of the twentieth Century Plus Detection and Attribution (C20C+D&A) Project.

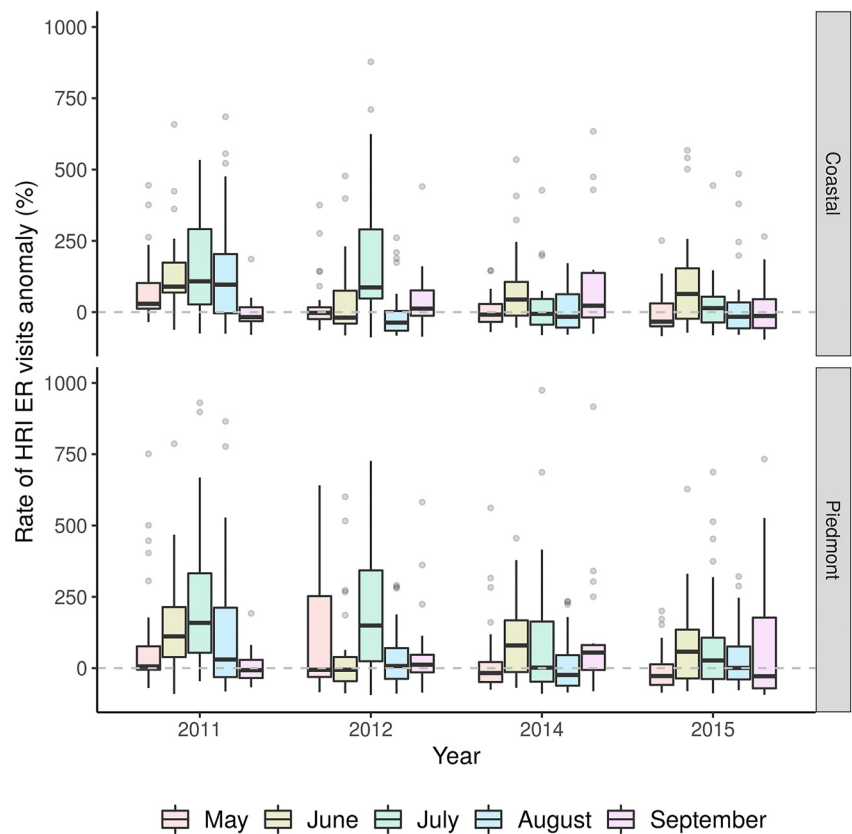
### 3.3. Burden of HRI Morbidity in Context of Future Climate Change

Aggregate  $t_{\max}$  values for the baseline, mid-century, and late-century were estimated assuming intermediate emission (RCP4.5) and higher emission (RCP8.5) scenarios using the CCSM4 and GFDL-ESM2M model outputs. In both the Coastal and Piedmont regions, we observed a significant increase in the median HRI.

In the Coastal region, during the mid-century, we observed up to 31.45% increase in the median HRI assuming a higher emission scenario compared to intermediate ( $p$ -value < 0.001). In the late century, the median HRI increased up to 78.65%, assuming higher emission scenario, compared to the intermediate scenario ( $p$ -value < 0.001). Additionally, assuming the intermediate emission scenario, the median HRI increased up to 53.01% during the mid-century and up to 67.98% in late century, compared to the baseline period ( $p$ -value < 0.001). Similarly, assuming a higher emission scenario, the median HRI increased up to 68.77% during the mid-century and up to 116.31% in the late century, compared to the baseline ( $p$ -value < 0.001) (Figure 3).

In the Piedmont region, during the mid-century, the median HRI increased up to 24.17% assuming higher emission, compared to intermediate ( $p$ -value < 0.001). In the late century, the median HRI increased up to 65.85% assuming higher emissions, compared to intermediate emission scenario ( $p$ -value < 0.001). Additionally, assuming intermediate emissions, the median HRI increased up to 55.89% during the mid-century and up to 75.59% in late century, compared to the baseline ( $p$ -value < 0.001). Assuming higher emission scenario, the median HRI increased up to 77.28% during mid-century and up to 110.35% in late century, compared to the base line ( $p$ -value < 0.001).



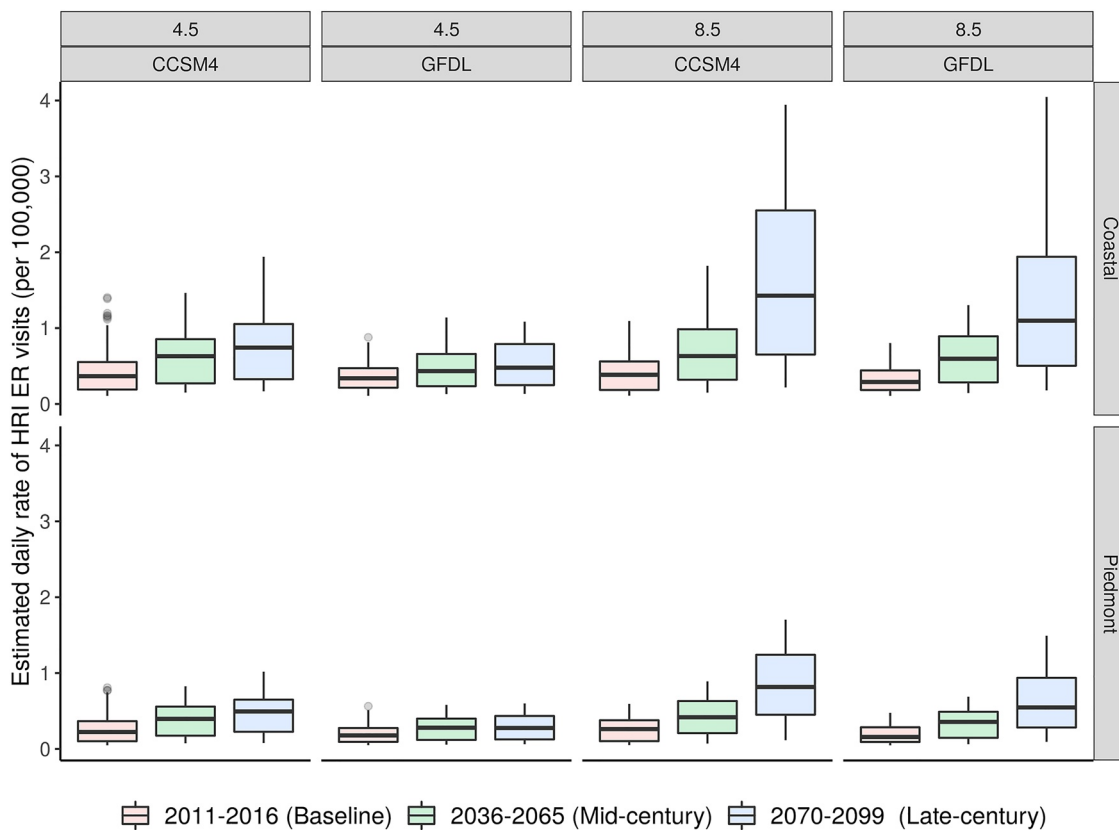


**Figure 2.** Heat-related illness (HRI) morbidity attributable to anthropogenic climate change. Box plots are color coded by summer months and grouped by year. The boxplots show the median and interquartile range (25%–75% range), outliers were represented using gray dots. The proportion of the box plot above the horizontal dashed line represent percent increase in HRI morbidity attributable to climate change.

#### 4. Discussion

To our knowledge, this is the first study to identify a significant increase in HRI associated with current and future anthropogenic climate change. We identified that anthropogenic climate change attributed to higher frequency of hot days in North Carolina over a 4-year period from 2011 to 2016. During the 4-year study period, our findings suggest about 3 out of 20 HRI emergency department visits in North Carolina were attributable to anthropogenic climate change. In addition, future projections of climate change showed a continued increase in HRI over the next century.

Our findings are similar to other studies that have found an increase in heat-related mortality attributable to anthropogenic climate change. However, this is the first study to focus on morbidity. Unlike studies focused on mortality, morbidity better captures the total human health burden associated with climate change. Other studies focused on health outcomes associated with climate-related events show that mortality often underestimates the total impacts on health and the associated healthcare costs. Based on our results in two regions in North Carolina, we estimate that 13.4% and 16.4% of HRI emergency room visits from 2011 to 2016 occurred because of anthropogenic climate change. The HRI attributable to anthropogenic climate change could be translated to an average of up to 85 HRI emergency department visits per physiographic region per summer season. Similarly, Vicedo-Cabrera et al. (2021) reported an average of about 23 heat-related deaths per year in 6 major cities in North Carolina attributable to anthropogenic climate change (Vicedo-Cabrera et al., 2021). Our results suggest that heat-related morbidity is 3.69 times higher than the heat-related mortality rate reported by Vicedo-Cabrera et al. (2021). The higher number of HRI could be due to the difference in the total number of cities included in our study (all the area covered under Coastal and Piedmont regions) compared to Vicedo-Cabrera et al., 2021, which included 6 major cities in North Carolina. It is also natural that morbidity should be higher than estimates of mortality, as not every heat-related illness results in a death. In North Carolina, the annual mean heat-related



**Figure 3.** Estimated heat-related illness (HRI) morbidity rate in context of climate change. The box plots are color coded by time-period and grouped by climate scenario/climate model. The box plot shows median and interquartile range (25%–75%), with outliers using gray dots. CCSM4—Community Climate System Model (version. 4) and GFDL—Geophysical Fluid Dynamics Laboratory.

mortality rate is about 200 times less than the rate of heat-related ED visits (0.11 [1997–2001] vs. 22.2 [2007–2012]) per 100,000 persons) (Mirabelli & Richardson, 2005; Sugg et al., 2016). Additionally, the natural simulation data used in this study is from the C20C + D&A project (Stone et al., 2019), whereas their simulation runs were obtained from the Detection and Attribution Model Intercomparison Project (DAMIP). The natural simulations from C20C + D&A were based dynamical ocean model (ocean surface and sea ice conditions), and are hypothesized to have minimal bias than the simulations from DAMIP that are based on prescribed sea surface conditions (Stone et al., 2019). The use of exposure data in our study from the C20C + D&A project versus DAMIP data being used by Vicedo-Cabrera et al., 2021, could introduce heterogeneity in ambient heat exposure assessment. We observed a significant decline in the frequency of hot days assuming natural simulations than the actual observations, similar to Mitchell et al. (2016) and Vicedo-Cabrera et al. (2021). The HRI rate was significantly higher during the actual observations than in natural simulations. Further studies need to explore the current attributable impacts on morbidity associated anthropogenic climate change.

Along with the current climate risk attribution, we estimated the HRI associated with the future climate change. This study discussed the burden of HRI associated with climate change by comparing the HRI rate assuming intermediate and high emission scenarios. We observed a significant increase (up to 78.65% in Coastal and 65.85% in Piedmont regions) in HRI assuming a higher emission scenario (RCP8.5) compared to the intermediate emission scenario (RCP4.5). Additionally, the median rate of HRI significantly increased during the mid (up to 68.77% in Coastal and 77.28% in Piedmont) and late century (up to 116.31% in Coastal and 110.35% in Piedmont) compared to the baseline during both the emission scenarios. Similar results were reported by Lay et al. (2018), who estimated an increase in HRI emergencies by 32% in 2050 and 79% in 2090, assuming RCP8.5 compared to the RCP4.5 scenario. Kingsley et al. (2016) reported a 20% increase in HRI in Rhode Island assuming the RCP8.5 scenario and attributable to climate change. Our results (up to 31.45% increase in HRI during mid-century and 78.65% in the late century) are similar to the HRI changes reported by Lay et al. (2018)

and Kingsley et al. (2016). The heterogeneity in the findings from our study compared to the literature could be explained by the climate variability, human vulnerability to natural hazards across geographies (Ebi et al., 2018). The findings from the fourth national climate assessment suggest that the population living the Southeastern United States are exposed to extreme temperatures than the other parts of the US (Carter et al., 2018). Similarly, variability in vulnerability characteristics across geographies that interact with natural hazards such as extreme heat, could result in differential exposure-response associations by geographic areas (Berke et al., 2015; Cutter & Finch, 2008). Transitioning to the presentation of the HRI burden associated with anthropogenic climate change, we discussed our findings using the percent increase in HRI morbidity. Lay et al. (2018) estimated the attributable cost of heat on morbidity by exploring employer-based health insurance claims database of people under the age of 65. Discussing HRI in terms of cost often provides compelling insights that would effectively advocate policy change but were associated with limitations. The health data being used by Lay et al. (2018) excluded the most vulnerable population groups, such as the unemployed and elderly. In comparison, our study did not restrict vulnerable population groups from North Carolina.

The evidence-based findings from our study discussing HRI attributable to climate change play a key role in public health education and preparedness that are relevant to extreme temperature exposure. Translating our results into public health action by developing community scale risk mitigation plans could substantially minimize the HRI risk. In addition, this study could support actuaries as a framework to assess the human health risks associated with extreme events driven by climate change. Unlike the existing literature, our methodology contextualized both the current and future HRI morbidity attributable to climate change. Our comprehensive methodologic approach in quantifying HRI morbidity associated with climate change using the acute (GAM) and distributive (DLNM) associations, would allow direct comparison of effect estimates from two statistical approaches that are commonly practiced in climate attribution studies. Additionally, population vulnerabilities such as age, gender, comorbidities, household type, income, nature of the employment, and daily activity, are known to interact or mediate with temperature exposure in exacerbating HRI risk (Ebi, Vanos, et al., 2021). Along with population vulnerabilities, community build characteristics could mediate the HRI risk associated with climate change. Certain phenomenon such as the urban heat island and heat dome effect, were identified to be driving factors associated with extreme heat exposure disparities by geography (Henderson et al., 2022; Tuholske et al., 2021). These phenomena are typically driven by neighborhood characteristics such as land use and land cover (Fard et al., 2021). Further studies discussing human health risks attributable to the current and future climate change, by considering population vulnerabilities and neighborhood characteristics could address these gaps in the research. As we observed strong correlation with daily maximum temperature, compared to the heat metrics based on temperature and humidity during the study period, the statistical model based on temperature was trained to predict HRI morbidity attributable to current and future climate change. According to the 2017 National Climate Assessment, there is a minimal change in total annual summer precipitation associated with climate change in the Southeastern region, compared to the other regions in the US (Easterling et al., 2017). However, the future changes in precipitation trends could influence the HRI morbidity estimates. In this paper, we did not discuss relative humidity due to the large uncertainties that make future estimates less reliable (Flato et al., 2013; Risi et al., 2012).

In this study, the future projections of HRI were estimated using static population (2010 decennial census). The objective of this study is to estimate the percent change in HRI over time, rather than presenting an absolute count of future HRI ED visits. Few studies adjusted for future population growth (Lay et al., 2018; Martinez et al., 2016) to describe the results based on absolute counts to estimate the cost associated with hospitalizations and ED visits. Estimation of the future population growth would be essential to translate estimated number of HRI morbidity or mortality from the current period to project future HRI. In this study, we discussed the human health burden associated with future climate change using the percent change in the rate of HRI, which do not require population growth estimation. Due to data limitations, we did not calculate the excess number of morbidities associated with future climate change, which is essential for the cost estimation. Additionally, changes in population characteristics across North Carolina physiographic divisions could influence our study results.

## 5. Conclusions

This work adds strong evidence quantifying the human health risk associated with current and future climate change in the Southeastern United States. This study estimated about 3 out of 20 emergency room visits associated

with HRI in North Carolina during the study period is attributable to anthropogenic climate change. Additionally, a substantial increase in HRI assumed a high emission scenario compared to an intermediate emission scenario. Our findings suggest that anthropogenic climate change is already having a significant effect on human health and will continue to have impacts in the future. Our findings suggest that adaptation interventions, along with greenhouse gas mitigation, are needed to reduce the health impacts of climate change. As current climate change is already causing increases in hospitalization, public health interventions should be implemented now to reduce the current and future health burden. By using best knowledge and practices, the health impacts associated with climate change can be addressed.

### Conflict of Interest

The authors declare no conflicts of interest relevant to this study.

### Data Availability Statement

- Observed temperature data for research are available at the Global Historical Climatology Network daily (GHCNd) database, [Data Set]. Available at: <https://www.ncei.noaa.gov/products/land-based-station/global-historical-climatology-network-daily>
- Observed precipitation and dew point data for research are available at the PRISM Climate Group database, [Data set]. Available at: <https://www.prism.oregonstate.edu/recent/>
- The natural simulations data for research are available at the C20C + Detection and Attribution Project database, [Data set]. Available at: [https://portal.nersc.gov/cascade/data/downloader.php?get\\_dirs=](https://portal.nersc.gov/cascade/data/downloader.php?get_dirs=)
- The future climate simulation data for research are available at the Localized Statistical Downscaling Constructed Analogs database, [Data Set]. Available at: <http://loca.ucsd.edu/>
- The heat-related emergency department visit data are not publicly available, but available to researchers through the North Carolina Department of Health and Human Services. Available at: <https://ncdetect.org/data/>.

### Acknowledgments

This study was supported by the Society of Actuaries, Climate Central, and the CDC Climate and Health Cooperative Agreement Awards NUE1EH001316 and NUE1EH001449. We would also like to thank Dr. Daniel Mitchell, Dr. Eunice Lo, the Claire M. Hubbard Foundation, and Robert B. Daugherty Water for Food Global Institute at the University of Nebraska for their support. NC DETECT Statement: Emergency Department data were obtained from NC DETECT through a DUA. NC DETECT is a statewide public health syndromic surveillance system, funded by the NC Division of Public Health (NC DPH) Federal Public Health Emergency Preparedness Grant and managed through collaboration between NC DPH and the UNC-CH Department of Emergency Medicine's Carolina Center for Health Informatics. The NC DETECT Data Oversight Committee is not responsible for the scientific validity or accuracy of methodology, results, statistical analyses, or conclusions presented.

### References

- Anderson, G. B., Bell, M. L., & Peng, R. D. (2013). Methods to calculate the heat index as an exposure metric in environmental health research. *Environmental Health Perspectives*, *121*(10), 1111–1119. <https://doi.org/10.1289/ehp.1206273>
- Baccini, M., Biggeri, A., Accetta, G., Kosatsky, T., Katsouyanni, K., Analitis, A., et al. (2008). Heat effects on mortality in 15 European cities. *Epidemiology*, *19*(5), 711–719. <https://doi.org/10.1097/EDE.0b013e318176bfcd>
- Bell, J. E., Brown, C. L., Conlon, K., Herring, S., Kunkel, K. E., Lawrimore, J., et al. (2018). Changes in extreme events and the potential impacts on human health. *Journal of the Air & Waste Management Association*, *68*(4), 265–287. <https://doi.org/10.1080/10962247.2017.1401017>
- Berke, P., Newman, G., Lee, J., Combs, T., Kolosna, C., & Salvesen, D. (2015). Evaluation of networks of plans and vulnerability to hazards and climate change: A resilience scorecard. *Journal of the American Planning Association*, *81*(4), 287–302. <https://doi.org/10.1080/01944363.2015.1093954>
- C20C+D&A (C20C+ Detection and Attribution Project). (n.d.). Cascade remote downloader [Database]. Retrieved from [https://portal.nersc.gov/cascade/data/downloader.php?get\\_dirs=](https://portal.nersc.gov/cascade/data/downloader.php?get_dirs=)
- Carter, L., Terando, A., Dow, K., Hiers, K., Kunkel, K. E., Lascurian, A., et al. (2018). Southeast. In D. R. Reidmiller, C. W. Avery, D. R. Easterling, K. E. Kunkel, K. L. M. Lewis, T. K. Maycock, et al. (Eds.), *Impacts, risks, and adaptation in the United States: Fourth National climate assessment, Vol: II* (pp. 743–808). U.S. Global Change Research Program. <https://doi.org/10.7930/NCA4.2018.CH19>
- Castelhana, F. J., & Laboclina. (2017). Calculate thermal indexes. In *Package 'ThermIndex' (version 0.2.0) CRAN*, [Software]. stl. Retrieved from <https://cran.r-project.org/web/packages/ThermIndex/ThermIndex.pdf>
- Christidis, N., Mitchell, D., & Stott, P. A. (2019). Anthropogenic climate change and heat effects on health. *International Journal of Climatology*, *39*(12), 4751–4768. <https://doi.org/10.1002/joc.6104>
- Conlon, K. C., Kintziger, K. W., Jagger, M., Stefanova, L., Uejio, C. K., & Konrad, C. (2016). Working with climate projections to estimate disease burden: Perspectives from public health. *International Journal of Environmental Research and Public Health*, *13*(8), 804. Article 804. <https://doi.org/10.3390/ijerph13080804>
- Cutter, S. L., & Finch, C. (2008). Temporal and spatial changes in social vulnerability to natural hazards. *Proceedings of the National Academy of Sciences of the United States of America*, *105*(7), 2301–2306. <https://doi.org/10.1073/pnas.0710375105>
- Danzl, D. F. (2018). Heat-related illnesses. In J. L. Jameson, A. S. Fauci, D. L. Kasper, S. L. Hauser, D. L. Longo, & J. Loscalzo (Eds.), *Harrison's Principles of Internal Medicine, 20e*. McGraw-Hill Education. Retrieved from [accessmedicine.mhmedical.com/content.aspx?aid=1155960954](https://accessmedicine.mhmedical.com/content.aspx?aid=1155960954)
- Dominici, F., & Peng, R. D. (2008). *Statistical methods for environmental epidemiology with R (1. Ed.)*. Springer-Verlag. <https://doi.org/10.1007/978-0-387-78167-9>
- Easterling, D. R., Kunkel, K. E., Arnold, J. R., Knutson, T., LeGrande, A. N., Leung, L. R., et al. (2017). Precipitation change in the United States. In D. J. Wuebbles, D. W. Fahey, K. A. Hibbard, D. J. Dokken, B. C. Stewart, & T. K. Maycock (Eds.), *Climate science special report: Fourth National climate assessment, Volume 1* (pp. 207–230). U.S. Global Change Research Program. <https://doi.org/10.7930/JOH993CC>
- Ebi, K. L., Astrom, C., Boyer, C. J., Harrington, L. J., Hess, J. J., Honda, Y., et al. (2020). Using detection and attribution to quantify how climate change is affecting health. *Health Affairs*, *39*(12), 2168–2174. <https://doi.org/10.1377/hlthaff.2020.01004>

- Ebi, K. L., Balbus, J. M., Luber, G., Bole, A., Crimmins, A., Glass, G., et al. (2018). Human health. In D. R. Reidmiller, C. W. Avery, D. R. Easterling, K. E. Kunkel, K. L. M. Lewis, T. K. Maycock, et al. (Eds.), *Impacts, risks, and adaptation in the United States: Fourth National climate assessment, Vol. II* (pp. 539–571). U.S. Global Change Research Program. <https://doi.org/10.7930/NCA4.2018.CH14>
- Ebi, K. L., Capon, A., Berry, P., Broderick, C., de Dear, R., Havenith, G., et al. (2021). Hot weather and heat extremes: Health risks. *Lancet*, 398(10301), 698–708. [https://doi.org/10.1016/S0140-6736\(21\)01208-3](https://doi.org/10.1016/S0140-6736(21)01208-3)
- Ebi, K. L., Ogden, N. H., Semenza, J. C., & Woodward, A. (2017). Detecting and attributing health burdens to climate change. *Environmental Health Perspectives*, 125(8), 085004. <https://doi.org/10.1289/EHP1509>
- Fard, B. J., Mahmood, R., Hayes, M., Rowe, C., Abadi, A. M., Shulski, M., et al. (2021). Mapping heat vulnerability index based on different urbanization levels in Nebraska, USA. *GeoHealth*, 5(10), e2021GH000478. <https://doi.org/10.1029/2021GH000478>
- Flato, G., Marotzke, J., Abiodun, B., Braconnot, P., Chou, S. C., Collins, W., et al. (2013). Evaluation of climate models. In T. F. Stocker, D. Qin, G.-K. Plattner, M. Tignor, S. K. Allen, J. Boschung, et al. (Eds.), *Climate change 2013: The physical science basis. Contribution of working group I to the fifth assessment report of the intergovernmental panel on climate change*. Cambridge University Press.
- Gasparri, A. (2011). Distributed lag linear and non-linear models in R: The package dlnm. *Journal of Statistical Software*, 43(8), 1–20. <https://doi.org/10.18637/jss.v043.i08>
- Gasparri, A., Armstrong, B., & Scheipl, F. (2021). Distributed lag non-linear models. CRAN [Software]. Retrieved from <https://cran.r-project.org/web/packages/dlnm/dlnm.pdf>
- Gosling, S. N., Hondula, D. M., Bunker, A., Ibarreta, D., Liu, J., Zhang, X., & Sauerborn, R. (2017). Adaptation to climate change: A comparative analysis of modeling methods for heat-related mortality. *Environmental Health Perspectives*, 125(8), 087008. <https://doi.org/10.1289/EHP634>
- Guo, Y., Gasparri, A., Li, S., Sera, F., Vicedo-Cabrera, A. M., de Sousa Zanotti Stagliorio Coelho, M., et al. (2018). Quantifying excess deaths related to heatwaves under climate change scenarios: A multicountry time series modelling study. *PLoS Medicine*, 15(7), e1002629. <https://doi.org/10.1371/journal.pmed.1002629>
- Harduar Morano, L., & Waller, A. E. (2017). Evaluation of the components of the North Carolina syndromic surveillance system heat syndrome case definition. *Public Health Reports*, 132(1\_suppl), 40S–47S. <https://doi.org/10.1177/0033354917710946>
- Henderson, S. B., McLean, K. E., Lee, M. J., & Kosatsky, T. (2022). Analysis of community deaths during the catastrophic 2021 heat dome: Early evidence to inform the public health response during subsequent events in greater Vancouver, Canada. *Environmental Epidemiology*, 6(1), e189. <https://doi.org/10.1097/EE9.000000000000189>
- Hoegh-Guldberg, O., Bindi, M., & Allen, M. (2018). Chapter 3: Impacts of 1.5°C of global warming on natural and human systems. In *Intergovernmental Panel on Climate Change (IPCC) Special Report on the impacts of global warming of 1.5°C*.
- Houston, T. G., Gleason, B. E., Vose, R. S., Durre, I., & Menne, M. J. (2012). An overview of the global historical climatology network-daily database. *Journal of Atmospheric and Oceanic Technology*, 29(7), 897–910. <https://doi.org/10.1175/jtech-d-11-00103.1>
- IPCC (Intergovernmental Panel on Climate Change). (2014). Climate change 2014: Synthesis report. Retrieved from <https://ar5-syr.ipcc.ch/index.php>
- IPCC (Intergovernmental Panel on Climate Change). (2021). *Summary for policymakers (climate change 2021: The physical science basis. Contribution of working group I to the sixth assessment report of the intergovernmental panel on climate change, issue. C. U. Press*. Retrieved from [https://www.ipcc.ch/report/ar6/wg1/downloads/report/IPCC\\_AR6\\_WGL\\_SPM.pdf](https://www.ipcc.ch/report/ar6/wg1/downloads/report/IPCC_AR6_WGL_SPM.pdf)
- Kingsley, S. L., Eilott, M. N., Gold, J., Vanderslice, G. R., & Wellenius, G. A. (2016). Current and projected heat-related morbidity and mortality in Rhode Island. *Environmental Health Perspectives*, 124(4), 460–467. <https://doi.org/10.1289/ehp.1408826>
- Langlois, N., Herbst, J., Mason, K., Nairn, J., & Byard, R. W. (2013). Using the excess heat factor (EHF) to predict the risk of heat related deaths. *Journal of Forensic and Legal Medicine*, 20(5), 408–411. <https://doi.org/10.1016/j.jflm.2012.12.005>
- Lay, C. R., Mills, D., Belova, A., Sarofim, M. C., Kinney, P. L., Vaidyanathan, A., et al. (2018). Emergency department visits and ambient temperature: Evaluating the connection and projecting future outcomes. *GeoHealth*, 2(6), 182–194. <https://doi.org/10.1002/2018GH000129>
- LOCA (Localized constructed analogs). (n.d.). [Database]. Retrieved from <http://loca.ucsd.edu/LOCA>
- LoVecchio, F. (2016). Heat emergencies. In J. E. Tintinalli, J. S. Stapczynski, O. J. Ma, D. M. Yealy, G. D. Meckler, & D. M. Cline (Eds.), *Tintinalli's Emergency Medicine: A Comprehensive Study Guide, 8e*. McGraw-Hill Education.
- Martinez, G. S., Baccini, M., De Ridder, K., Hooyberghs, H., Lefebvre, W., Kendrovski, V., et al. (2016). Projected heat-related mortality under climate change in the metropolitan area of Skopje. *BMC Public Health*, 16(1), 407. <https://doi.org/10.1186/s12889-016-3077-y>
- Mirabelli, M. C., & Richardson, D. B. (2005). Heat-related fatalities in North Carolina. *American Journal of Public Health*, 95(4), 635–637. <https://doi.org/10.2105/AJPH.2004.042630>
- Mitchell, D., Heaviside, C., Vardoulakis, S., Huntingford, C., Masato, G., P Guillod, B., et al. (2016). Attributing human mortality during extreme heat waves to anthropogenic climate change. *Environmental Research Letters*, 11(7), 74006. <https://doi.org/10.1088/1748-9326/11/7/074006>
- Mora, C., Dousset, B., Caldwell, I. R., Powell, F. E., Geronimo, R. C., Bielecki, C. R., et al. (2017). Global risk of deadly heat. *Nature Climate Change*, 7(7), 501–506. <https://doi.org/10.1038/nclimate3322>
- NC-DETECT (North Carolina Disease Event Tracking and Epidemiologic Collection Tool). (n. d.) [Database]. Retrieved from <https://ncdetect.org>
- NC-DHHS (North Carolina Department of Health and Human Services). (2015). North Carolina climate and health profile. Retrieved from <https://epi.dph.ncdhhs.gov/oee/climate/ClimateAndHealthProfile.pdf>
- NC-DHHS (North Carolina Department of Health and Human Services). (2016). Heat related illness dashboard July 24–28, 2016. Retrieved from <https://epi.dph.ncdhhs.gov/oee/climate/2016-JulyHeatIllnessDashboard-081616.pdf>
- Nemer, J. A., & Juarez, M. A. (2019). Disorders related to environmental emergencies. In M. A. Papadakis, S. J. McPhee, & M. W. Rabow (Eds.), *Current medical diagnosis & treatment 2019*. McGraw-Hill Education.
- NOAA (National Oceanic and Atmospheric Administration). (2019). Weather related fatalities. Retrieved from <https://www.weather.gov/media/hazstat/80years.pdf>
- NOAA (National Oceanic and Atmospheric Administration). (n.d.). Global Historical Climatology Network daily (GHCNd) [Database]. Retrieved from <https://www.ncdc.noaa.gov/products/land-based-station/global-historical-climatology-network-daily>
- Pierce, D. W., Cayan, D. R., & Thrasher, B. L. (2014). Statistical downscaling using localized constructed analogs (LOCA). *Journal of Hydrometeorology*, 15(6), 2558–2585. <https://doi.org/10.1175/jhm-d-14-0082.1>
- PRISM (Parameter-elevation Regression on Independent Slopes Model). (n.d.). [Database]. Retrieved from <https://prism.oregonstate.edu>
- Rennie, J., Bell, J. E., Kunkel, K. E., Herring, S., Cullen, H., & Abadi, A. M. (2019). Development of a submonthly temperature product to monitor near-real-time climate conditions and assess long-term heat events in the United States. *Journal of Applied Meteorology and Climatology*, 58(12), 2653–2674. <https://doi.org/10.1175/jamc-d-19-0076.1>
- Risi, C., Noone, D., Worden, J., Frankenberg, C., Stiller, G., Kiefer, M., et al. (2012). Process-evaluation of tropospheric humidity simulated by general circulation models using water vapor isotopic observations: 2. Using isotopic diagnostics to understand the mid and upper tropospheric moist bias in the tropics and subtropics. *Journal of Geophysical Research*, 117(D5), D05304. <https://doi.org/10.1029/2011JD016623>

- Sarofim, M. C., Saha, S., Hawkins, M. D., Mills, D. M., Hess, J., Horton, R. M., et al. (2016). *The impacts of climate change on human health in the United States: A scientific assessment, executive summary*. U.S Global Change Research Program.
- Stone, D. A., Christidis, N., Folland, C., Perkins-Kirkpatrick, S., Perlwitz, J., Shiogama, H., et al. (2019). Experiment design of the International CLIVAR C20C+ detection and attribution project. *Weather and Climate Extremes*, 24(C), 100206. <https://doi.org/10.1016/j.wace.2019.100206>
- Sugg, M. M., Konrad, C. E., 2nd, & Fuhrmann, C. M. (2016). Relationships between maximum temperature and heat-related illness across North Carolina, USA. *International Journal of Biometeorology*, 60(5), 663–675. <https://doi.org/10.1007/s00484-015-1060-4>
- Tuholske, C., Caylor, K., Funk, C., Verdin, A., Sweeney, S., Grace, K., et al. (2021). Global urban population exposure to extreme heat. *Proceedings of the National Academy of Sciences of the United States of America*, 118(41). <https://doi.org/10.1073/pnas.2024792118>
- Vaidyanathan, A., Malilay, J., Schramm, P., & Saha, S. (2020). Heat-related deaths—United States, 2004–2018. *MMWR Morbidity and Mortality Weekly Report*, 69(24), 729–734. <https://doi.org/10.15585/mmwr.mm6924a1>
- Vicedo-Cabrera, A. M., Scovronick, N., Sera, F., Roye, D., Schneider, R., Tobias, A., et al. (2021). The burden of heat-related mortality attributable to recent human-induced climate change. *Nature Climate Change*, 11(6), 492–500. <https://doi.org/10.1038/s41558-021-01058-x>
- Wood, S. (2017a). Generalized linear models. In *Generalized additive models: An introduction with R* (pp. 101–160). CRC Press.
- Wood, S. (2017b). Smoothers. In *Generalized additive models: An introduction with R* (pp. 195–247). CRC Press.
- Wood, S. (2021). Mixed GAM computation vehicle with automatic smoothness estimation. In *R package version (Version 1.8-34)*. [Software]. stl. Retrieved from <https://cran.r-project.org/web/packages/mgcv/mgcv.pdf>
- Zhang, M., Liu, P., Chang, E., Lombardo, K. A., Zhang, Z., & Colle, B. A. (2013). Historical evaluation and future prediction of eastern North American and Western Atlantic extratropical cyclones in the CMIP5 models during the cool season. *Journal of Climate*, 26(18), 6882–6903. <https://doi.org/10.1175/jcli-d-12-00498.1>