

University of Nebraska - Lincoln

DigitalCommons@University of Nebraska - Lincoln

---

Historical Materials from University of  
Nebraska-Lincoln Extension

Extension

---

1986

## EC86-1540 Common Tree and Shrubs Pests

Follow this and additional works at: <https://digitalcommons.unl.edu/extensionhist>



Part of the [Agriculture Commons](#), and the [Curriculum and Instruction Commons](#)

---

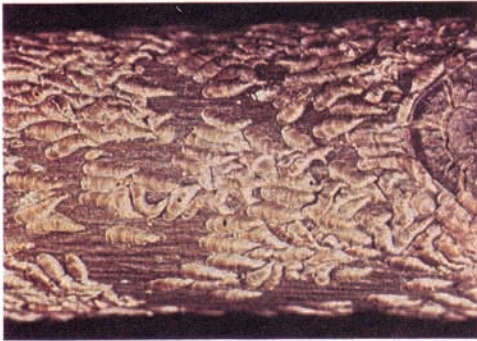
"EC86-1540 Common Tree and Shrubs Pests" (1986). *Historical Materials from University of Nebraska-Lincoln Extension*. 1837.

<https://digitalcommons.unl.edu/extensionhist/1837>

This Article is brought to you for free and open access by the Extension at DigitalCommons@University of Nebraska - Lincoln. It has been accepted for inclusion in Historical Materials from University of Nebraska-Lincoln Extension by an authorized administrator of DigitalCommons@University of Nebraska - Lincoln.

# COMMON TREE AND SHRUB PESTS

For safe and effective use of insecticides, always identify the problem correctly.



1. Oystershell scale



5. Pine needle scale



8. Elm leaf beetle and larvae



2. Maple bladder gall



6. Bagworm



9. Eastern tent caterpillar



3. Flatheaded borer



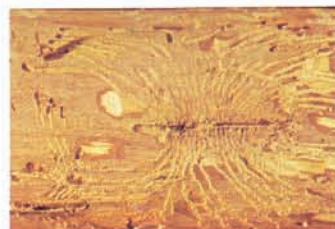
7. Smaller European elm bark beetle and galleries



10. Yellow-necked caterpillar



4. Aphid



11. Spruce mite injury