

University of Nebraska - Lincoln

DigitalCommons@University of Nebraska - Lincoln

Nebraska Tractor Tests

Tractor Test and Power Museum, The Lester F. Larsen

5-9-1985

Test 1562: Hesston 70-90 Fiat Diesel 12-Speed

Nebraska Tractor Test Lab

University of Nebraska-Lincoln, tractortestlab@unl.edu

Follow this and additional works at: <https://digitalcommons.unl.edu/tractormuseumlit>



Part of the [Energy Systems Commons](#), [History of Science, Technology, and Medicine Commons](#), [Other Mechanical Engineering Commons](#), [Physical Sciences and Mathematics Commons](#), [Science and Mathematics Education Commons](#), and the [United States History Commons](#)

Nebraska Tractor Test Lab, "Test 1562: Hesston 70-90 Fiat Diesel 12-Speed" (1985). *Nebraska Tractor Tests*. 1873.

<https://digitalcommons.unl.edu/tractormuseumlit/1873>

This Article is brought to you for free and open access by the Tractor Test and Power Museum, The Lester F. Larsen at DigitalCommons@University of Nebraska - Lincoln. It has been accepted for inclusion in Nebraska Tractor Tests by an authorized administrator of DigitalCommons@University of Nebraska - Lincoln.

NEBRASKA TRACTOR TEST 1562—HESSTON 70-90 FIAT DIESEL 12 SPEED

POWER TAKE-OFF PERFORMANCE

Power Hp (kW)	Crank shaft speed rpm	Fuel Consumption			Temperature °F (°C)			Barometer inch Hg (kPa)
		gal/hr (l/h)	lb/hp.hr (kg/kW.h)	Hp.hr/gal (kW.h/l)	Cooling medium	Air wet bulb	Air dry bulb	

MAXIMUM POWER AND FUEL CONSUMPTION

Rated Engine Speed — Two hours (PTO Speed —1050 rpm)								
62.25 (46.42)	2500	3.867 (14.638)	0.434 (0.264)	16.10 (3.171)	188 (86.9)	67 (19.4)	75 (23.9)	28.85 (97.41)

Standard Power Take-off Speed (1000 rpm) — One Hour								
61.94 (46.19)	2381	3.749 (14.191)	0.422 (0.257)	16.52 (3.255)	188 (86.9)	67 (19.4)	75 (23.6)	28.84 (97.39)

Standard Power Take-off Speed (540 rpm) — One Hour								
59.88 (44.65)	2199	3.580 (13.551)	0.417 (0.254)	16.73 (3.296)	189 (87.2)	68 (19.7)	75 (23.7)	28.83 (97.35)

VARYING POWER AND FUEL CONSUMPTION — Two Hours

56.26 (41.96)	2659	3.545 (13.421)	0.440 (0.268)	15.87 (3.126)	184 (84.4)	67 (19.4)	75 (23.6)
0.00 (0.00)	2750	1.186 (4.490)	177 (80.6)	67 (19.4)	74 (23.3)
28.50 (21.25)	2693	2.252 (8.524)	0.552 (0.336)	12.66 (2.493)	179 (81.7)	67 (19.4)	75 (23.6)
62.32 (46.47)	2500	3.803 (14.397)	0.426 (0.259)	16.39 (3.228)	189 (87.2)	68 (19.7)	75 (23.9)
14.42 (10.76)	2726	1.723 (6.523)	0.834 (0.507)	8.37 (1.649)	177 (80.6)	68 (19.7)	75 (23.9)
42.51 (31.70)	2678	2.858 (10.818)	0.469 (0.285)	14.87 (2.930)	181 (82.8)	67 (19.4)	75 (23.9)
Av 34.00 Av (25.36)	2667	2.561 (9.695)	0.526 (0.320)	13.28 (2.615)	181 (82.9)	67 (19.5)	75 (23.7)	28.83 (97.34)

DRAWBAR PERFORMANCE

Power Hp (kW)	Drawbar pull lbs (kN)	Speed mph (km/h)	Crank- shaft speed rpm	Slip %	Fuel Consumption			Temp. °F (°C)			Barom. inch Hg (kPa)
					gal/hr (l/h)	lb/hp.hr (kg/kW.h)	Hp.hr/gal (kW.h/l)	Cool- ing med	Air wet bulb	Air dry bulb	

Maximum Available Power — Two Hours 8th (III-1) Gear											
53.92 (40.21)	3601 (16.02)	5.62 (9.04)	2500	5.96	3.839 (14.532)	0.497 (0.302)	14.04 (2.767)	188 (86.7)	63 (17.2)	76 (24.4)	28.95 (97.76)

75% of Pull at Maximum Power — Ten Hours 8th (III-1) Gear											
44.54 (33.21)	2735 (12.17)	6.11 (9.83)	2668	4.16	3.309 (12.526)	0.519 (0.315)	13.46 (2.652)	185 (85.1)	64 (17.5)	76 (24.4)	29.00 (97.93)

50% of Pull at Maximum Power — Two Hours 8th (III-1) Gear											
30.38 (22.66)	1824 (8.11)	6.25 (10.05)	2691	2.79	2.571 (9.733)	0.591 (0.359)	11.82 (2.328)	183 (83.6)	65 (18.3)	80 (26.7)	28.96 (97.79)

50% of Pull at Reduced Engine Speed — Two Hours 10th (III-2) Gear											
30.39 (22.67)	1823 (8.11)	6.25 (10.06)	1746	2.69	2.048 (7.754)	0.470 (0.286)	14.84 (2.923)	182 (83.3)	65 (18.3)	83 (28.1)	28.95 (97.74)

MAXIMUM POWER IN SELECTED GEARS

47.98 (35.78)	6238 (27.75)	2.88 (4.64)	2603	14.90	5th (I-4) Gear			181 (82.8)	55 (12.8)	61 (16.1)	28.95 (97.76)
52.05 (38.81)	5629 (25.04)	3.47 (5.58)	2501	11.24	6th (II-2) Gear			182 (83.3)	57 (13.9)	63 (17.2)	28.95 (97.76)
53.16 (39.64)	4531 (20.15)	4.40 (7.08)	2499	7.96	7th (II-3) Gear			183 (83.9)	59 (15.0)	65 (18.3)	28.95 (97.76)
54.64 (40.74)	3647 (16.22)	5.62 (9.04)	2502	5.96	8th (III-1) Gear			189 (86.9)	63 (17.2)	77 (25.0)	28.95 (97.76)
52.59 (39.21)	2708 (12.04)	7.28 (11.72)	2501	4.42	9th (II-4) Gear			183 (83.6)	60 (15.6)	66 (18.9)	28.96 (97.79)
52.22 (38.94)	2209 (9.83)	8.86 (14.26)	2500	3.60	10th (III-2) Gear			183 (83.9)	60 (15.6)	67 (19.4)	28.96 (97.79)

Department of Agricultural Engineering

Dates of Test: April 22 to May 9, 1985

Manufacturer: FIAT TRATTORI, S.p.A., Via Picodella Mirandola 72-41100, Modena, Italy

FUEL, OIL AND TIME: Fuel No. 2 Diesel Cetane No. 48.3 (rating taken from oil company's inspection data) Specific gravity converted to 60/60°F (15/15°C) 0.8384 Fuel weight 6.981 lbs/gal (0.837 kg/l) Oil SAE 15W-40 API service classification SE, SF, CC, CD To motor 3.045 gal (11.528 l) Drained from motor 2.774 gal (10.500 l) Transmission and final drive lubricant API 303 hydraulic fluid Total time engine was operated 37.0 hours.

ENGINE: Make Fiat/IVECO Diesel Type four cylinder vertical Serial No. 8045.06*200-022974* Crankshaft lengthwise Rated rpm 2500 Bore and stroke 3.937 " × 4.527" (100 mm × 115 mm) Compression ratio 17 to 1 Displacement 220.5 cu in (3613 ml) Starting system 12 volt Lubrication pressure Air cleaner two paper elements Oil filter one full flow cartridge Fuel filter two paper elements Muffler vertical Cooling medium temperature control one thermostat.

CHASSIS: Type standard Serial No. *70-90/12*630842* Tread width rear 63" (1600 mm) to 82.7" (2100 mm) front 55.1" (1400 mm) to 74.8" (1900 mm) Wheel base 92.2" (2342 mm) Center of gravity (without operator or ballast, with minimum tread, with fuel tank filled and tractor serviced for operation) Horizontal distance forward from center-line of rear wheels 30.9" (786 mm) Vertical distance above roadway 38.2" (970 mm) Horizontal distance from center of rear wheel tread 0" (0 mm) to the right/left Hydraulic control system direct engine drive Transmission selective gear fixed ratio Advertised speeds mph (km/h) first 1.1 (1.7) second 1.7 (2.7) third 2.0 (3.2) fourth 2.5 (4.0) fifth 3.2 (5.2) sixth 3.9 (6.3) seventh 4.8 (7.7) eighth 6.0 (9.6) ninth 7.6 (12.2) tenth 9.2 (14.8) eleventh 11.3 (18.2) twelfth 18.0 (28.9) reverse 2.8 (4.5), 4.3 (6.9), 5.2 (8.4), 8.4 (13.5) Clutch dry disc operated by foot pedal Brakes wet disc hydraulically operated by two foot pedals which can be locked together Steering hydrostatic Turning radius (on concrete surface with brake applied) right 134" (3.40 m) left 134" (3.40 m) (on concrete surface without brake) right 154" (3.91 m) left 154" (3.91 m) Turning space diameter (on concrete surface with brake applied) right 276" (7.01 m) left 276" (7.01 m) (on concrete surface without brake) right 316" (8.03 m) left 316" (8.03 m) Power take-off 540 rpm at 2199 engine rpm and 1000 rpm at 2381 engine rpm Unladen tractor mass 7110 lb (3225 kg).

LUGGING ABILITY IN 8th (III-1) GEAR

Crankshaft Speed rpm	2502	2251	2000	1743	1494	1242	1008
Pull—lbs (kN)	3647 (16.22)	3952 (17.58)	4063 (18.07)	4182 (18.60)	4396 (19.55)	4512 (20.07)	4050 (18.02)
Increase in Pull %	0	8	11	15	21	24	11
Power—Hp (kW)	54.64 (40.74)	52.93 (39.47)	48.18 (35.93)	43.05 (32.10)	38.56 (28.75)	32.81 (24.46)	24.14 (18.00)
Speed—Mph (km/h)	5.62 (9.04)	5.02 (8.08)	4.45 (7.16)	3.86 (6.21)	3.29 (5.29)	2.73 (4.39)	2.24 (3.60)
Slip %	5.96	6.61	7.00	7.26	7.77	8.02	7.13
TRACTOR SOUND LEVEL WITH CAB							dB(A)
Maximum Available Power—Two Hours							80.0
75% of Pull at Maximum Power—Ten Hours							80.5
50% of Pull at Maximum Power—Two Hours							81.0
50% of Pull at Reduced Engine Speed—Two Hours							75.0
Bystander in 12th (III-4) gear							85.5

TIRES, BALLAST AND WEIGHT

Rear Tires	—No., size, ply & psi (kPa)	With Ballast	Without Ballast
	—Liquid (each)	Two 18.4-30; 6; 16 (110)	Two 18.4-30; 6; 16 (110)
Ballast	—Cast Iron (each)	210 lb (95 kg)	None
		None	None
Front Tires	—No., size, ply & psi (kPa)	Two 7.50-16; 6; 40 (275)	Two 7.50-16; 6; 40 (275)
	—Liquid (each)	None	None
Ballast	—Cast Iron (each)	35 lb (16 kg)	None
		None	None
Height of Drawbar		21 in (535 mm)	21 in (535 mm)
Static Weight with Operator	—Rear	5340 lb (2422 kg)	4920 lb (2232 kg)
	—Front	2435 lb (1105 kg)	2365 lb (1073 kg)
	—Total	7775 lb (3527 kg)	7285 lb (3305 kg)

THREE POINT HITCH PERFORMANCE

Observed Maximum Pressure psi (kPa)	2750 (18960)	
Location	remote outlet	
Hydraulic oil temperature °F (°C)	185 (85)	
Location	pump inlet	
	Maximum Lift Capacity	Lift Capacity for Transport
QUICK ATTACH	no	
CATEGORY	II	*not measured
LOAD lbs (kg)	5212 (2364)	
TIME sec	2.71	
HITCH POINT MOVEMENT in (mm)		
Lowest position	11.3 (287)	
Top of timed range	35.3 (897)	
Highest position	36.1 (917)	
LOAD CG MOVEMENT in (mm)		
Lowest position	11.0 (279)	
Top of timed range	37.3 (947)	
Highest position	38.4 (975)	

*Implement load capacity for transport purposes not specified by manufacturer.

REPAIRS AND ADJUSTMENTS: No repairs or adjustments.

REMARKS: All test results were determined from observed data obtained in accordance with SAE and ASAE test codes and the technically equivalent ISO test codes or official Nebraska test procedure. For the maximum power tests, the fuel temperature at the injection pump return was maintained at 154°F (67.8°C). Six gears were chosen between 15% slip and 10 mph (16.1 km/h).

We, the undersigned, certify that this is as true and correct report of official Tractor Test No. **1562**, June 14, 1985.

LOUIS I. LEVITICUS

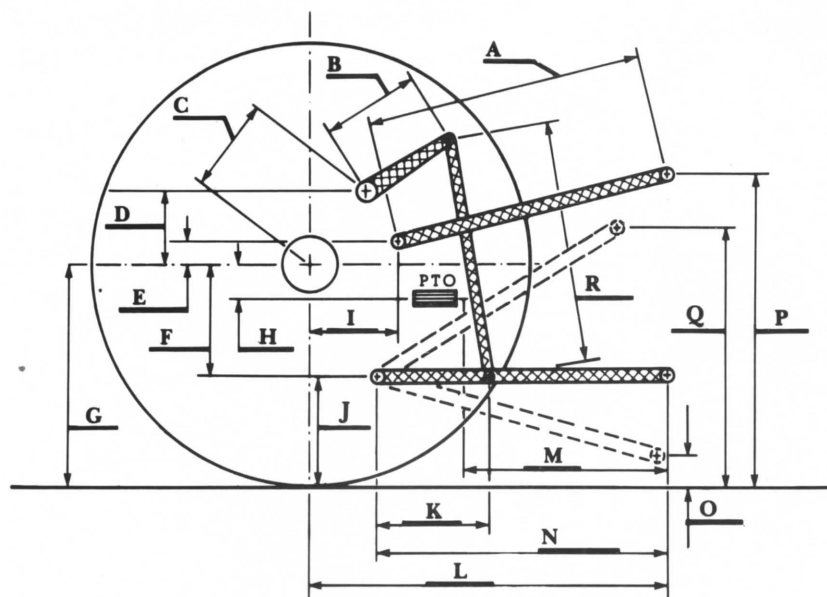
Engineer-in-Charge

K. VON BARGEN

L. L. BASHFORD

T. L. THOMPSON

Board of Tractor Test Engineers



Hitch Dimensions as Tested — No Load

	inch	mm
A	27.1	689
B	10.0	255
C	13.8	350
D	11.8	300
E	9.8	250
F	7.9	200
G	27.5	699
H	0.6	16
I	15.0	380
J	19.8	502
K	17.7	450
L	43.3	1100
M	23.2	590
N	37.8	960
O	8.0	203
P	38.8	984
Q	36.0	914
R	23.5	597



Hesston 70-90 Fiat Diesel