

University of Nebraska - Lincoln

DigitalCommons@University of Nebraska - Lincoln

---

Nebraska Tractor Tests

Tractor Test and Power Museum, The Lester F. Larsen

---

1-1-1991

## Test 1652: Case International 9260 Diesel and Steiger 9260 Diesel 12-Speeds

Nebraska Tractor Test Lab

University of Nebraska-Lincoln, [tractortestlab@unl.edu](mailto:tractortestlab@unl.edu)

Follow this and additional works at: <https://digitalcommons.unl.edu/tractormuseumlit>



Part of the [Energy Systems Commons](#), [History of Science, Technology, and Medicine Commons](#), [Other Mechanical Engineering Commons](#), [Physical Sciences and Mathematics Commons](#), [Science and Mathematics Education Commons](#), and the [United States History Commons](#)

---

Nebraska Tractor Test Lab, "Test 1652: Case International 9260 Diesel and Steiger 9260 Diesel 12-Speeds" (1991). *Nebraska Tractor Tests*. 1962.  
<https://digitalcommons.unl.edu/tractormuseumlit/1962>

This Article is brought to you for free and open access by the Tractor Test and Power Museum, The Lester F. Larsen at DigitalCommons@University of Nebraska - Lincoln. It has been accepted for inclusion in Nebraska Tractor Tests by an authorized administrator of DigitalCommons@University of Nebraska - Lincoln.

# NEBRASKA OECD TRACTOR TEST 1652—SUMMARY 097

## CASE INTERNATIONAL 9260 DIESEL

## ALSO STEIGER 9260 DIESEL

## 12 SPEED

### POWER TAKE-OFF PERFORMANCE

Power HP (kW)	Crank shaft speed rpm	Gal/hr (l/h)	lb/hp.hr (kg/kW.h)	Hp.hr/gal (kW.h/l)	Mean Atmospheric Conditions
---------------------	--------------------------------	-----------------	-----------------------	-----------------------	--------------------------------

### MAXIMUM POWER AND FUEL CONSUMPTION

Rated Engine Speed—(PTO speed—999 rpm)					
265.84 (198.24)	2098	14.73 (55.74)	0.387 (0.236)	18.05 (3.56)	

### Maximum Power (2 Hours)

270.26 (201.53)	2000	14.60 (55.26)	0.378 (0.230)	18.51 (3.65)	
--------------------	------	------------------	------------------	-----------------	--

### VARYING POWER AND FUEL CONSUMPTION

265.84 (198.24)	2098	14.73 (55.74)	0.387 (0.236)	18.05 (3.56)	Air temperature  75°F (24°C)
234.65 (174.98)	2192	13.86 (52.48)	0.413 (0.251)	16.93 (3.33)	
178.61 (133.19)	2222	11.42 (43.22)	0.447 (0.272)	15.65 (3.08)	Relative humidity  31%
119.66 (89.23)	2241	8.63 (32.66)	0.504 (0.307)	13.87 (2.73)	
60.64 (45.22)	2266	6.65 (25.18)	0.767 (0.466)	9.12 (1.80)	Barometer  29.23" Hg (98.99 kPa)
0.78 (0.58)	2301	4.16 (15.76)	37.186 (22.620)	0.19 (0.04)	

Maximum Torque 984 lb.-ft (1334 Nm) at 1296 rpm

Maximum Torque Rise 47.8%

### DRAWBAR PERFORMANCE

### FUEL CONSUMPTION CHARACTERISTICS

Power Hp (kW)	Drawbar pull lbs (kN)	Speed mph (km/h)	Crank- shaft speed rpm	Slip %	Fuel Consumption lb/hp.hr (kg/kW.h)	Hp.hr/gal (kW.h/l)	Temp.°F (°C) cool- ing med	Air dry bulb	Barom. inch Hg (kPa)
Maximum Power—5th Gear									
236.13 (176.08)	17841 (79.36)	4.96 (7.99)	2098	2.45	0.436 (0.265)	16.03 (3.16)	169 (76)	54 (12)	29.30 (99.22)
75% of Pull at Maximum Power—5th Gear									
187.49 (139.81)	13420 (59.70)	5.24 (8.43)	2204	2.09	0.481 (0.293)	14.53 (2.86)	171 (77)	67 (19)	29.20 (98.88)
50% of Pull at Maximum Power—5th Gear									
127.67 (95.21)	8952 (39.82)	5.35 (8.61)	2237	1.44	0.571 (0.347)	12.25 (2.41)	166 (74)	67 (19)	29.20 (98.88)
75% of Pull at Reduced Engine Speed—6th Gear									
187.65 (139.93)	13437 (59.77)	5.24 (8.43)	1790	1.99	0.421 (0.256)	16.59 (3.27)	171 (77)	68 (20)	29.10 (98.54)
50% of Pull at Reduced Engine Speed—6th Gear									
127.53 (95.10)	8940 (39.76)	5.35 (8.61)	1817	1.44	0.458 (0.279)	15.25 (3.00)	164 (73)	68 (20)	29.10 (98.54)

**Location of Test:** Tractor Testing Laboratory,  
University of Nebraska, Lincoln, Nebraska 68583-  
0832, U.S.A.

**Dates of Test:** September 17-26, 1991

**Manufacturer:** J.I. CASE CO. 3401 First Avenue  
North, Fargo ND 58102

**FUEL OIL and TIME:** Fuel No. 2 Diesel Cetane  
No. 53.9 Specific gravity converted to 60°/60°F  
(15°/15°C) 0.8395 Fuel weight 6.990 lbs/gal (0.838  
kg/l) Oil SAE 15W-40 API service classification  
CE, CD To motor 8.806 gal (33.334 l) Drained  
from motor 8.459 gal (32.021 l) Transmission and  
final drive lubricant Case IH Hytran Plus fluid  
Hydraulic lubricant Case IH Hytran Plus fluid  
Total time engine was operated 22.0 hours.

**ENGINE:** Make Cummins Diesel Type six cyl-  
inder vertical with turbocharger and intercooler  
Serial No. 34642428 Crankshaft lengthwise Rated  
rpm 2100 Bore and stroke (as specified) 4.921" ×  
5.354" (125.0 mm × 136.0 mm) Compression ratio  
16.0 to 1 Displacement 611 cu in (10000 ml) Start-  
ing system 12 volt Lubrication pressure Air cleaner  
two paper elements and aspirator Oil filter one  
full flow cartridge Oil cooler engine coolant heat  
exchanger for crankcase oil, radiator for hydraulic  
and transmission oil Fuel filter one paper element  
Muffler vertical Cooling medium temperature  
control thermostat.

**ENGINE OPERATING PARAMETERS:** Fuel  
rate 99.0-104.0 lb/hr (44.9-47.2 kg/hr) High idle  
2250-2350 rpm Turbo boost nominal 21-26 psi  
(149-176 kPa) as measured 20.0 psi (138 kPa).

**CHASSIS:** Type four wheel drive with duals,  
rigid frame Serial No. -JCB0022218- Tread width  
rear 84.0" (2135 mm) and 139.7" (3550 mm) front  
84.0" (2135 mm) and 139.7" (3550 mm) Wheel base  
124.0" (3150 mm) Hydraulic control system direct  
engine drive Transmission selective gear fixed ra-  
tio with full range operator controlled powershift  
Nominal travel speeds mph (km/h) first 2.31 (3.71)  
second 2.79 (4.49) third 3.44 (5.53) fourth 4.17  
(6.71) fifth 5.05 (8.12) sixth 6.21 (9.99) seventh  
7.33 (11.80) eighth 8.87 (14.27) ninth 10.92 (17.57)  
tenth 13.25 (21.33) eleventh 16.04 (25.81) twelfth  
19.74 (31.77) reverse 3.01 (4.85), 5.45 (8.77), 9.58  
(15.42) Clutch multiple wet disc hydraulically power  
actuated by foot pedal Brakes caliper disc hy-  
draulically operated by foot pedal Steering hy-  
drostatic for front wheels, electrohydraulic for rear  
wheels. Front and rear wheels may be steered in-  
dependently or together Power take-off 1000 rpm  
at 2098 engine rpm Unladen tractor mass 30135  
lb (13669 kg).

# **DRAWBAR PERFORMANCE** **MAXIMUM POWER IN SELECTED GEARS**

Power Hp (kW)	Drawbar pull lbs (kN)	Speed mph (km/h)	Crank- shaft speed rpm	Slip %	Fuel Consumption lb/hp.hr (kg/kW.h)	Hp.hr/gal (kW.h/l)	Temp. °F (°C) cool- ing med	Air dry bulb	Barom. inch Hg (kPa)
<b>1st Gear</b>									
186.26 (138.90)	31618 (140.64)	2.21 (3.56)	2200	9.43	0.491 (0.299)	14.24 (2.80)	166 (74)	60 (16)	29.29 (99.19)
<b>2nd Gear</b>									
212.38 (158.37)	29551 (131.45)	2.70 (4.34)	2159	6.86	0.482 (0.293)	14.51 (2.86)	169 (76)	63 (17)	29.28 (99.15)
<b>3rd Gear</b>									
230.73 (172.06)	27406 (121.91)	3.16 (5.08)	2019	5.27	0.436 (0.265)	16.04 (3.16)	171 (77)	63 (17)	29.28 (99.15)
<b>4th Gear</b>									
237.48 (177.09)	22993 (102.28)	3.87 (6.23)	2001	3.44	0.429 (0.261)	16.30 (3.21)	170 (77)	56 (13)	29.30 (99.22)
<b>5th Gear</b>									
241.15 (179.82)	19090 (84.92)	4.74 (7.62)	2006	2.54	0.421 (0.256)	16.60 (3.27)	169 (76)	52 (11)	29.30 (99.22)
<b>6th Gear</b>									
240.71 (179.50)	15462 (68.78)	5.84 (9.40)	1999	2.27	0.420 (0.255)	16.64 (3.28)	171 (77)	56 (13)	29.30 (99.22)
<b>7th Gear</b>									
240.38 (179.25)	13009 (57.87)	6.93 (11.15)	2004	2.09	0.426 (0.259)	16.40 (3.23)	171 (77)	57 (14)	29.30 (99.22)
<b>8th Gear</b>									
236.66 (176.48)	10575 (47.04)	8.39 (13.51)	2000	1.53	0.433 (0.263)	16.16 (3.18)	171 (77)	58 (14)	29.30 (99.22)

## **TRACTOR SOUND LEVEL WITH CAB**

	<b>dB(A)</b>
Gear closest to 4.7 mph (7.5 km/h) 5th gear	76.5
Maximum Sound Level—8th gear	77.0
Transport speed—no load 12th gear	76.5
Bystander	—

## **TIRES AND WEIGHT**

<b>Rear Tires</b>	—No., size, ply & psi (kPa)
<b>Front Tires</b>	—No., size, ply & psi (kPa)
<b>Height of Drawbar</b>	
<b>Static Weight with operator</b>	—Rear
	—Front
	—Total

## **Tested Without Ballast**

Four 20.8R42; **, inner 14 (95) outer 12 (85)
Four 20.8R42; **, inner 14 (95) outer 12 (85)
16.5 in (420 mm)
14400 lb (6532 kg)
15900 lb (7212 kg)
30300 lb (13744 kg)

**REPAIRS AND ADJUSTMENTS:** No repairs or adjustments.

**REMARKS:** All test results were determined from observed data obtained in accordance with official OECD, SAE and Nebraska test procedures. For the maximum power tests, the fuel temperature at the injection pump inlet was maintained at 127° F (53° C). The drawbar pull in 1st gear was limited to avoid tractor bouncing. The performance figures on this summary were taken from a test conducted under the OECD Code II restricted standard test code procedure.

We, the undersigned, certify that this is a true and correct report of official Tractor Test No. **1652**, Summary 097, October 17, 1991.

**LOUIS I. LEVITICUS**

Engineer-in-Charge

**K. VON BARGEN**

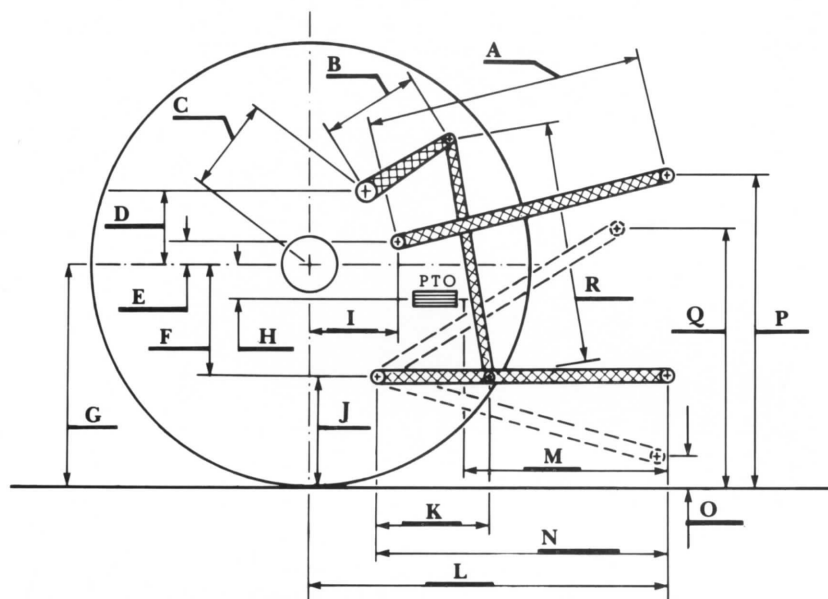
**R. D. GRISSO**

**L. L. BASHFORD**

Board of Tractor Test Engineers

# THREE POINT HITCH PERFORMANCE (OECD Static Test)

CATEGORY:	III
Quick Attach:	yes
Maximum Force Exerted Through Whole Range:	13212 lbs (58.8 kN)
i) Opening pressure of relief valve:	NA
Sustained pressure at compensator cutoff:	2470 psi (170 bar)
ii) Pump delivery rate at minimum pressure:	28.0 GPM (106.0 l/min)
iii) Pump delivery rate at maximum hydraulic power:	24.6 GPM (93.1 l/min)
Delivery pressure:	2240 psi (154 bar)
Power:	32.1 HP (24.0 kW)



HITCH DIMENSIONS AS TESTED—NO LOAD

	inch	mm
A	29.3	744
B	21.0	533
C	26.3	667
D	25.1	637
E	11.4	289
F	9.9	251
G	36.1	917
H	2.2	56
I	25.3	642
J	26.2	666
K	23.0	584
L	54.7	1389
L'	59.7	1516
M	25.0	635
N	42.0	1067
O	9.0	229
P	48.2	1225
Q	40.7	1034
R	37.5	953
L' to end of Quick attach		



Case International 9260 Diesel