

University of Nebraska - Lincoln

DigitalCommons@University of Nebraska - Lincoln

Nebraska Tractor Tests

Tractor Test and Power Museum, The Lester F.
Larsen

January 1995

Test 1693: Agco Allis 9455 Diesel 32-Speed

Nebraska Tractor Test Lab

University of Nebraska-Lincoln, tractortestlab@unl.edu

Follow this and additional works at: <https://digitalcommons.unl.edu/tractormuseumlit>



Part of the [Energy Systems Commons](#), [History of Science, Technology, and Medicine Commons](#), [Other Mechanical Engineering Commons](#), [Physical Sciences and Mathematics Commons](#), [Science and Mathematics Education Commons](#), and the [United States History Commons](#)

Nebraska Tractor Test Lab, "Test 1693: Agco Allis 9455 Diesel 32-Speed" (1995). *Nebraska Tractor Tests*. 2002.

<https://digitalcommons.unl.edu/tractormuseumlit/2002>

This Article is brought to you for free and open access by the Tractor Test and Power Museum, The Lester F. Larsen at DigitalCommons@University of Nebraska - Lincoln. It has been accepted for inclusion in Nebraska Tractor Tests by an authorized administrator of DigitalCommons@University of Nebraska - Lincoln.

NEBRASKA OECD TRACTOR TEST 1693—SUMMARY 179

AGCO ALLIS 9455 DIESEL

32 SPEED

Location of Test: Tractor Testing Laboratory,
University of Nebraska, Lincoln, Nebraska 68583-0832

Dates of Test: May 19 to June 5, 1995

Manufacturer: AGCO Corporation, Duluth,
Georgia 30136

POWER TAKE-OFF PERFORMANCE

Power HP (kW)	Crank shaft speed rpm	Gal/hr (l/h)	lb/hp.hr (kg/kW.h)	Hp.hr/gal (kW.h/l)	Mean Atmospheric Conditions
MAXIMUM POWER AND FUEL CONSUMPTION					
Rated Engine Speed—(PTO speed—1052 rpm)					
155.56 (116.00)	2199	9.40 (35.57)	0.421 (0.256)	16.55 (3.26)	
Standard Power Take-off Speed (1000 rpm)					
156.73 (116.87)	2090	9.18 (34.73)	0.408 (0.248)	17.08 (3.36)	
Maximum Power (2 hours)					
163.09 (121.62)	1850	9.15 (34.64)	0.391 (0.238)	17.83 (3.51)	

VARYING POWER AND FUEL CONSUMPTION

155.56 (116.00)	2199	9.40 (35.57)	0.421 (0.256)	16.55 (3.26)	Air temperature
138.71 (103.44)	2307	8.87 (33.55)	0.446 (0.271)	15.65 (3.08)	77°F (25°C)
105.32 (78.54)	2340	7.31 (27.69)	0.484 (0.294)	14.40 (2.84)	Relative humidity
71.33 (53.19)	2373	5.90 (22.32)	0.576 (0.350)	12.10 (2.38)	70%
35.87 (26.75)	2401	4.52 (17.10)	0.878 (0.534)	7.94 (1.56)	Barometer
0.44 (0.33)	2425	3.06 (11.56)	48.210 (29.326)	0.14 (0.03)	28.87"Hg (97.77 kPa)

Maximum Torque 487 lb.-ft. (660Nm) at 1700 rpm
Maximum Torque Rise 31.1%
Torque rise at 1799 rpm 27%

DRAWBAR PERFORMANCE

(Unballasted—Front Drive Engaged)

FUEL CONSUMPTION CHARACTERISTICS

Power Hp (kW)	Drawbar pull lbs (kN)	Speed mph (km/h)	Crank- shaft speed rpm	Slip %	Fuel Consumption lb/hp.hr (kg/kW.h)	Hp.hr/gal (kW.h/l)	Temp.°F (°C) cool- ing med	Air dry bulb	Barom. inch Hg (kPa)
Maximum Power—20th (A2H) Gear									
136.49 (101.78)	6842 (30.43)	7.48 (12.04)	2199	2.35	0.472 (0.287)	14.78 (2.91)	191 (88)	75 (24)	29.07 (98.44)
75% of Pull at Maximum Power—20th (A2H) Gear									
108.88 (81.19)	5136 (22.85)	7.95 (12.79)	2322	1.82	0.524 (0.319)	13.30 (2.62)	188 (86)	75 (24)	29.07 (98.44)
50% of Pull at Maximum Power—20th (A2H) Gear									
74.18 (55.31)	3425 (15.24)	8.12 (13.07)	2359	1.10	0.613 (0.373)	11.38 (2.24)	186 (85)	75 (24)	29.07 (98.44)
75% of Pull at Reduced Engine Speed—23rd (C2H) Gear									
108.78 (81.12)	5130 (22.82)	7.95 (12.80)	1681	1.82	0.452 (0.275)	15.44 (3.04)	189 (87)	75 (24)	29.07 (98.44)
50% of Pull at Reduced Engine Speed—23rd (C2H) Gear									
74.20 (55.33)	3430 (15.26)	8.11 (13.06)	1706	1.28	0.491 (0.299)	14.21 (2.80)	185 (85)	75 (24)	29.07 (98.44)

FUEL OIL and TIME: Fuel No. 2 Diesel Cetane No. 50.6 Specific gravity converted to 60°/60° F (15°/15°C) 0.8374 Fuel weight 6.972 lbs/gal (0.836 kg/l) Oil SAE 15W-40 API service classification CD-II, SG To motor 5.748 gal (21.759 l) Drained from motor 5.426 gal (20.501 l) Transmission and hydraulic lubricant AGCO Power Fluid 821XL Front axle lubricant AGCO Gear Lube 715 SAE 80W-90 Total time engine was operated 33.5 hours.

ENGINE: Make Detroit Diesel Series 40 Diesel Type six cylinder vertical with turbocharger Serial No. WF3324N0911062 Crankshaft lengthwise Rated engine speed 2200 Bore and stroke (as specified) 4.30" × 5.35" (109.2 mm × 135.9 mm) Compression ratio 15.8 to 1 Displacement 466 cu in (7600 ml) Starting system 12 volt Lubrication pressure Air cleaner two paper elements and aspirator Oil filter one full flow cartridge Oil cooler engine coolant heat exchanger for crankcase oil, radiator for hydraulic and final drive oil, radiator for transmission oil Fuel filter two paper elements Muffler underhood Exhaust vertical Cooling medium temperature control one thermostat.

ENGINE OPERATING PARAMETERS: Fuel rate: 60.9 - 67.3 lb/h (27.7 - 30.6 kg/h) High idle: 2325 - 2425 rpm Turbo boost nominal 17.8 psi (123 kPa) as measured 15.6 psi (98 kPa)

CHASSIS: Type front wheel assist Serial No. 95550ML Tread width rear 61.5" (1562 mm) to 127.5" (3239 mm) front 59.7" (1516 mm) to 91.4" (2322 mm) Wheel base 116.5" (2959 mm) Hydraulic control system direct engine drive Transmission selective gear fixed ratio with partial (4) range operator controlled powershift Nominal travel speeds mph (km/h) first 1.52 (2.44) second 1.78 (2.86) third 2.09 (3.37) fourth 2.31 (3.71) fifth 2.45 (3.95) sixth 2.70 (4.34) seventh 3.18 (5.12) eighth 3.29 (5.29) ninth 3.72 (5.99) tenth 3.85 (6.20) eleventh 4.48 (7.21) twelfth 4.54 (7.31) thirteenth 5.00 (8.04) fourteenth 5.24 (8.43) fifteenth 5.32 (8.56) sixteenth 5.85 (9.42) seventeenth 6.19 (9.96) eighteenth 6.90 (11.11) nineteenth 7.24 (11.65) twentieth 7.59 (12.21) twenty-first 8.08 (13.01) twenty-second 8.88 (14.29) twenty-third 10.48 (16.87) twenty-fourth 10.84 (17.44) twenty-fifth 12.27 (19.74) twenty-sixth 12.68 (20.41) twenty-seventh 14.75 (23.74) twenty-eighth 14.98 (24.10) twenty-ninth 17.26 (27.78) thirtieth 17.52 (28.20) thirty-first 20.38 (32.80) thirty-second 23.84 (38.38) reverse 1.52 (2.44), 1.78 (2.86), 2.09 (3.37), 2.31 (3.71), 2.45 (3.95), 2.70 (4.34), 3.18 (5.12), 3.29 (5.29),

DRAWBAR PERFORMANCE
(Unballasted—Front Drive Engaged)

MAXIMUM POWER IN SELECTED GEARS

Power Hp (kW)	Drawbar pull lbs (kN)	Speed mph (km/h)	Crank- shaft speed rpm	Slip %	Fuel Consumption lb/hp.hr (kg/kW.h)	Hp.hr/gal (kW.h/l)	Temp. ^o F (°C) cool- ing med	Air dry bulb	Barom. inch Hg (kPa)
8th (A3L) Gear									
121.52 (90.62)	15487 (68.89)	2.94 (4.74)	2270	14.28	0.540 (0.328)	12.92 (2.55)	187 (86)	62 (17)	29.05 (98.37)
9th (D2L) Gear									
130.01 (96.95)	14650 (65.17)	3.33 (5.36)	2140	9.08	0.488 (0.297)	14.29 (2.82)	187 (86)	65 (18)	29.05 (98.37)
10th (B3L) Gear									
130.37 (97.22)	14055 (62.52)	3.48 (5.60)	2149	8.39	0.486 (0.296)	14.34 (2.83)	188 (86)	68 (21)	29.07 (98.44)
11th (A4L) Gear									
135.26 (100.86)	13731 (61.08)	3.69 (5.95)	1952	7.93	0.466 (0.283)	14.97 (2.95)	189 (87)	70 (21)	29.07 (98.44)
12th (C3L) Gear									
135.61 (101.12)	13548 (60.26)	3.75 (6.04)	1942	7.37	0.462 (0.281)	15.10 (2.97)	190 (88)	69 (21)	29.07 (98.44)
13th (A1H) Gear									
138.61 (103.36)	13220 (58.81)	3.93 (6.33)	1850	7.37	0.451 (0.274)	15.47 (3.05)	190 (88)	72 (22)	29.07 (98.44)
14th (B4L) Gear									
138.83 (103.52)	12476 (55.49)	4.17 (6.72)	1845	5.92	0.451 (0.274)	15.47 (3.05)	192 (89)	71 (22)	29.07 (98.44)
15th (D3L) Gear									
139.40 (103.95)	12332 (54.85)	4.24 (6.82)	1849	6.17	0.446 (0.272)	15.62 (3.08)	192 (89)	74 (23)	29.07 (98.44)
16th (B1H) Gear									
141.45 (105.48)	11222 (49.92)	4.73 (7.61)	1850	4.84	0.441 (0.268)	15.81 (3.11)	193 (89)	73 (23)	29.07 (98.44)
17th (C4L) Gear									
140.71 (104.93)	10489 (46.66)	5.03 (8.10)	1850	4.25	0.442 (0.269)	15.78 (3.11)	194 (90)	75 (24)	29.08 (98.48)
18th (C1H) Gear									
142.84 (106.52)	9465 (42.10)	5.66 (9.11)	1851	3.65	0.439 (0.267)	15.87 (3.13)	193 (89)	75 (24)	29.08 (98.48)
19th (D4L) Gear									
140.76 (104.97)	8873 (39.47)	5.95 (9.57)	1850	3.22	0.442 (0.269)	15.78 (3.11)	195 (91)	75 (24)	29.08 (98.48)
20th (A2H) Gear									
143.02 (106.65)	8584 (38.18)	6.25 (10.05)	1850	3.14	0.438 (0.267)	15.91 (3.13)	193 (89)	75 (24)	29.07 (98.44)
21st (D1H) Gear									
142.93 (106.58)	8031 (35.72)	6.67 (10.74)	1851	2.87	0.439 (0.267)	15.89 (3.13)	195 (91)	75 (24)	29.08 (98.48)
22nd (B2H) Gear									
142.71 (106.42)	7274 (32.36)	7.36 (11.84)	1851	2.44	0.438 (0.267)	15.91 (3.13)	195 (91)	75 (24)	29.07 (98.44)
23rd (C2H) Gear									
140.92 (105.09)	6069 (27.00)	8.71 (14.01)	1847	2.17	0.440 (0.268)	15.83 (3.12)	196 (91)	75 (24)	29.07 (98.44)

TIRES, BALLAST AND WEIGHT

Rear Tires—No., size, ply & psi (kPa)
Ballast—Duals (total)
 —Test Equip. (total)
Front Tires—No., size, ply & psi (kPa)
Ballast—Liquid (total)
 —Test Equip. (total)
Height of Drawbar
Static Weight with Operator—Rear
 —Front
 —Total

With Ballast

Four 18.4R42; **, 20 (140)
 1680 lb (762 kg)
 136 lb (62 kg)
 Two 14.9R30; ***, 24 (165)
 None
 18 lb (8 kg)
 25.0 in (635 mm)
 12136 lb (5505 kg)
 5644 lb (2560 kg)
 17780 lb (8065 kg)

Without Ballast

Two 18.4R42; **, 20 (140)
 None
 None
 Two 14.9R30; ***, 24 (165)
 None
 None
 24.0 in (610 mm)
 10320 lb (4681 kg)
 5626 lb (2552 kg)
 15946 lb (7233 kg)

3.72 (5.99), 3.85 (6.20), 4.48 (7.21), 4.54 (7.31), 5.00 (8.04), 5.24 (8.43), 5.32 (8.56), 5.85 (9.42), 6.19 (9.96), 6.90 (11.11), 7.24 (11.65), 7.59 (12.21), 8.08 (13.01), 8.88 (14.29), 10.48 (16.87), 10.84 (17.44), 12.27 (19.74), 12.68 (20.41), 14.75 (23.74), 14.98 (24.10), 17.26 (27.78), 17.52 (28.20), 20.38 (32.80), 23.84 (38.38) **Clutch** dual dry discs actuated by foot pedal **Brakes** wet multiple disc hydraulically actuated by two foot pedals which can be locked together **Steering** hydrostatic **Power take-off** 540 rpm at 1992 engine rpm and 1000 rpm at 2090 engine rpm **Unladen tractor mass** 15780 lb (7158 kg)

REPAIRS AND ADJUSTMENTS: No repairs or adjustments

REMARKS: All test results were determined from observed data obtained in accordance with official OECD, SAE and Nebraska test procedures. For the maximum power tests, the fuel temperature at the injection pump return was maintained at 130° F (54°C). The pull in 6th (B2L) gear, ballasted tractor, was limited to avoid excessive tractor bouncing. The performance results on this summary were taken from OECD tests conducted under the Code II Restricted Standard Test Code procedure.

We, the undersigned, certify that this is a true and correct report of official Tractor Test No. **1693**, Summary 179, July 12, 1995.

LOUIS I. LEVITICUS
 Engineer-in-Charge

L.L. BASHFORD
 R.D. GRISSO
 M.F. KOCHER
 Board of Tractor Test Engineers

DRAWBAR PERFORMANCE
(Ballasted—Front Drive Disengaged)
FUEL CONSUMPTION CHARACTERISTICS

Power Hp (kW)	Drawbar pull lbs (kN)	Speed mph (km/h)	Crank- shaft speed rpm	Slip %	Fuel Consumption lb/hp.hr (kg/kW.h)	Hp.hr/gal (kW.h/l)	Temp.°F (°C) cool- ing med	Air dry bulb	Barom. inch Hg (kPa)
Maximum Power—13th (A1H) Gear									
135.90 (101.34)	10564 (46.99)	4.82 (7.76)	2203	4.72 (7.76)	0.478 (0.291)	14.59 (2.87)	191 (88)	70 (21)	29.08 (98.48)
75% of Pull at Maximum Power—13th (A1H) Gear									
109.33 (81.53)	7930 (35.27)	5.17 (8.32)	2323	3.19 (8.32)	0.517 (0.314)	13.49 (2.66)	188 (87)	71 (22)	29.04 (98.34)
50% of Pull at Maximum Power—13th (A1H) Gear									
79.43 (55.88)	5292 (23.54)	5.31 (8.55)	2361	2.22 (8.55)	0.606 (0.369)	11.50 (2.27)	185 (85)	71 (22)	29.04 (98.34)
75% of Pull at Reduced Engine Speed—18th (C1H) Gear									
109.44 (81.61)	7931 (35.28)	5.17 (8.33)	1683	3.19 (8.33)	0.442 (0.269)	15.78 (3.11)	188 (87)	71 (22)	29.04 (98.34)
50% of Pull at Reduced Engine Speed—18th (C1H) Gear									
74.58 (55.62)	5294 (23.55)	5.28 (8.50)	1700	2.31 (8.50)	0.475 (0.289)	14.68 (2.89)	185 (85)	71 (22)	29.04 (98.34)
MAXIMUM POWER IN SELECTED GEARS									
8th (A3L) Gear									
123.82 (92.33)	16264 (72.35)	2.85 (4.59)	2194	13.98 (4.59)	0.522 (0.318)	13.35 (2.63)	187 (86)	59 (15)	28.95 (98.04)
9th (D2L) Gear									
133.48 (99.54)	15843 (70.47)	3.16 (5.08)	2025	8.99 (5.08)	0.470 (0.286)	14.84 (2.92)	188 (87)	59 (15)	28.95 (98.04)
10th (B3L) Gear									
135.23 (100.84)	15587 (69.33)	3.25 (5.24)	1999	7.98 (5.24)	0.464 (0.282)	15.04 (2.96)	188 (87)	59 (15)	28.95 (98.04)
11th (A4L) Gear									
139.76 (104.22)	14718 (65.47)	3.56 (5.73)	1857	6.86 (5.73)	0.448 (0.273)	15.56 (3.07)	189 (87)	59 (15)	28.95 (98.04)
12th (C3L) Gear									
139.59 (104.09)	14493 (64.47)	3.61 (5.81)	1851	6.54 (5.81)	0.447 (0.272)	15.61 (3.07)	189 (87)	60 (16)	28.96 (98.07)
13th (A1H) Gear									
137.53 (102.56)	13144 (58.47)	3.92 (6.31)	1852	7.82 (6.31)	0.455 (0.277)	15.33 (3.02)	193 (89)	70 (21)	29.08 (98.48)
14th (B4L) Gear									
139.43 (103.98)	12513 (55.66)	4.18 (6.73)	1850	6.38 (6.73)	0.449 (0.273)	15.51 (3.06)	193 (89)	70 (21)	29.06 (98.41)
15th (D3L) Gear									
140.51 (104.78)	12431 (55.29)	4.24 (6.82)	1848	6.38 (6.82)	0.448 (0.272)	15.58 (3.07)	190 (88)	70 (21)	29.08 (98.48)
16th (B1H) Gear									
141.05 (105.18)	11218 (49.90)	4.72 (7.59)	1847	5.14 (7.59)	0.447 (0.272)	15.61 (3.08)	194 (90)	70 (21)	29.08 (98.48)
17th (C4L) Gear									
140.52 (104.78)	10492 (46.67)	5.02 (8.08)	1850	4.56 (8.08)	0.445 (0.271)	15.65 (3.08)	194 (90)	70 (21)	29.06 (98.41)
18th (C1H) Gear									
142.00 (105.89)	9424 (41.92)	5.65 (9.09)	1852	3.96 (9.09)	0.441 (0.268)	15.80 (3.11)	195 (91)	71 (22)	29.04 (98.34)
19th (D4L) Gear									
140.24 (104.58)	8878 (39.49)	5.92 (9.53)	1847	3.62 (9.53)	0.448 (0.273)	15.55 (3.06)	195 (91)	71 (22)	29.04 (98.34)
20th (A2H) Gear									
142.88 (106.55)	8585 (38.19)	6.24 (10.04)	1853	3.53 (10.04)	0.438 (0.267)	15.91 (3.13)	196 (91)	71 (22)	29.04 (98.34)
21st (D1H) Gear									
143.15 (106.75)	8057 (35.84)	6.66 (10.72)	1852	3.36 (10.72)	0.437 (0.266)	15.94 (3.14)	195 (90)	71 (22)	29.04 (98.34)
22nd (B2H) Gear									
142.02 (105.91)	7223 (32.13)	7.37 (11.87)	1859	2.92 (11.87)	0.450 (0.273)	15.51 (3.06)	194 (90)	71 (22)	29.04 (98.34)
23rd (C2H) Gear									
140.89 (104.46)	6056 (26.94)	8.68 (13.96)	1845	2.48 (13.96)	0.451 (0.274)	15.45 (3.04)	195 (90)	71 (22)	29.04 (98.34)

DRAWBAR PERFORMANCE
(Ballasted—Front Drive Engaged)
MAXIMUM POWER IN SELECTED GEARS

Power Hp (kW)	Drawbar pull lbs (kN)	Speed mph (km/h)	Crank- shaft speed rpm	Slip %	Fuel Consumption lb/hp.hr (kg/kW.h)	Fuel Consumption Hp.hr/gal (kW.h/l)	Temp.°F (°C) cool- ing med	Air dry bulb	Barom. inch Hg (kPa)
124.76 (93.03)	18754 (83.42)	2.49 (4.01)	2276	11.83	6th (B2L) Gear 0.526 (0.320)	13.26 (2.61)	186 (86)	59 (15)	29.10 (98.54)
132.28 (98.64)	17045 (75.82)	2.91 (4.68)	2147	7.59	7th (C2L) Gear 0.483 (0.294)	14.43 (2.84)	187 (86)	61 (16)	29.10 (98.54)
132.29 (98.65)	16490 (73.35)	3.01 (4.84)	2152	7.98	8th (A3L) Gear 0.484 (0.294)	14.41 (2.84)	187 (86)	64 (18)	29.10 (98.54)
133.51 (99.56)	16093 (71.58)	3.11 (5.01)	1988	8.92	9th (D2L) Gear 0.470 (0.286)	14.83 (2.92)	188 (87)	69 (21)	29.07 (98.44)
137.45 (102.49)	15977 (71.07)	3.23 (5.19)	1957	7.19	10th (B3L) Gear 0.457 (0.278)	15.25 (3.00)	189 (87)	67 (19)	29.09 (98.51)
138.70 (103.43)	14568 (64.80)	3.57 (5.75)	1847	6.54	11th (A4L) Gear 0.451 (0.274)	15.45 (3.04)	191 (88)	70 (21)	29.06 (98.41)
140.26 (104.60)	14490 (64.45)	3.63 (5.84)	1851	6.54	12th (C3L) Gear 0.448 (0.273)	15.56 (3.06)	190 (88)	71 (22)	29.07 (98.44)
142.22 (106.05)	13227 (58.83)	4.03 (6.49)	1848	5.39	13th (A1H) Gear 0.442 (0.269)	15.79 (3.11)	191 (88)	70 (21)	29.08 (98.48)
141.47 (105.50)	12444 (55.35)	4.26 (6.86)	1851	4.81	14th (B4L) Gear 0.442 (0.269)	15.76 (3.11)	194 (90)	70 (21)	29.06 (98.41)
142.87 (106.54)	12347 (54.92)	4.34 (6.98)	1855	4.72	15th (D3L) Gear 0.439 (0.267)	15.87 (3.13)	192 (89)	71 (22)	29.07 (98.44)
143.18 (106.77)	11217 (49.90)	4.79 (7.70)	1850	4.04	16th (B1H) Gear 0.438 (0.266)	15.93 (3.14)	196 (91)	70 (21)	29.08 (98.48)
142.47 (106.24)	10515 (46.77)	5.08 (8.18)	1850	3.78	17th (C4L) Gear 0.444 (0.270)	15.69 (3.09)	191 (88)	70 (21)	29.07 (98.44)
143.62 (107.10)	9461 (42.08)	5.69 (9.16)	1848	3.35	18th (C1H) Gear 0.437 (0.266)	15.94 (3.14)	191 (88)	71 (22)	29.04 (98.34)
141.72 (105.68)	8894 (39.56)	5.98 (9.62)	1845	3.09	19th (D4L) Gear 0.443 (0.269)	15.74 (3.10)	195 (91)	70 (21)	29.05 (98.37)
143.83 (107.25)	8551 (38.04)	6.31 (10.15)	1856	3.00	20th (A2H) Gear 0.438 (0.266)	15.93 (3.14)	193 (89)	71 (22)	29.04 (98.34)
144.25 (107.57)	8064 (35.87)	6.71 (10.80)	1849	2.83	21st (D1H) Gear 0.437 (0.266)	15.95 (3.14)	193 (89)	71 (22)	29.04 (98.34)
143.48 (107.00)	7262 (32.30)	7.41 (11.92)	1854	2.47	22nd (B2H) Gear 0.442 (0.269)	15.78 (3.11)	191 (88)	71 (22)	29.04 (98.34)
140.49 (104.76)	6007 (26.72)	8.77 (14.11)	1851	1.94	23rd (C2H) Gear 0.448 (0.273)	15.55 (3.06)	194 (90)	71 (22)	28.87 (97.77)

TRACTOR SOUND LEVEL WITH CAB

dB(A)

At 75% load in 12th (C3L) gear

77.5

Bystander

—

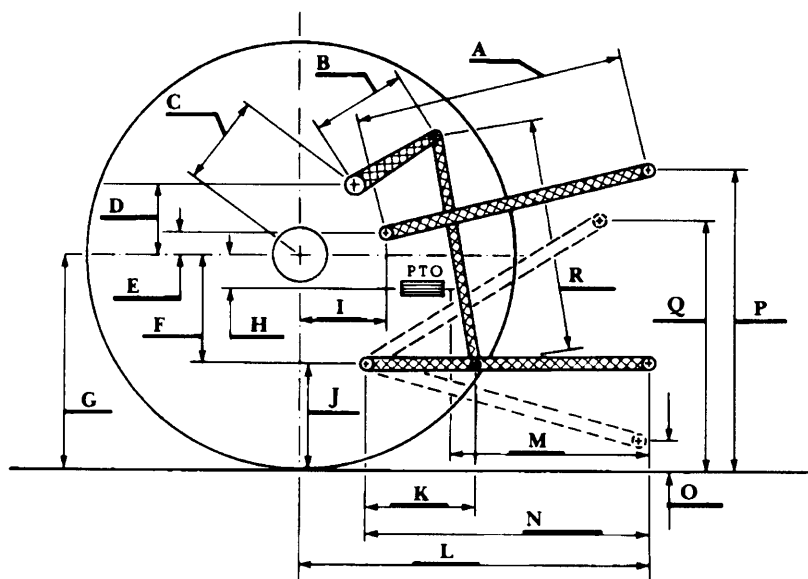
THREE POINT HITCH PERFORMANCE (OECD Static Test)

CATEGORY: III

Quick Attach: None

Maximum Force Exerted Through Whole Range:	12087 lbs	(53.8 kN)
i) Opening pressure of relief valve:	NA	
Sustained pressure with pump stalled:	2860 psi	(197 bar)
ii) Pump delivery rate at minimum pressure and rated engine speed:	32.2 GPM	(121.9 l/min)
iii) Pump delivery rate at maximum hydraulic power:	28.0 GPM	(106.0 l/min)
Delivery pressure:	2500 psi	(172 bar)
Power:	40.8 HP	(30.5 kW)

HITCH DIMENSIONS AS TESTED—NO LOAD



	inch	mm
A	30.5	775
B	14.3	362
C	18.5	470
D	17.0	432
E	9.3	237
F	11.8	300
G	35.0	889
H	3.0	76
I	16.9	428
J	23.2	589
K	23.6	600
L	47.2	1199
M	25.5	648
N	38.4	975
O	9.0	229
P	51.4	1306
Q	34.2	870
R	33.3	845



AGCO ALLIS 9455 DIESEL

Agricultural Research Division
Institute of Agriculture and Natural Resources
University of Nebraska-Lincoln
Darrell Nelson, Dean and Director