

University of Nebraska - Lincoln

DigitalCommons@University of Nebraska - Lincoln

Nebraska Tractor Tests

Tractor Test and Power Museum, The Lester F.
Larsen

January 1995

Test 1694: White 6124 Diesel 32-Speed

Nebraska Tractor Test Lab

University of Nebraska-Lincoln, tractortestlab@unl.edu

Follow this and additional works at: <https://digitalcommons.unl.edu/tractormuseumlit>



Part of the [Energy Systems Commons](#), [History of Science, Technology, and Medicine Commons](#), [Other Mechanical Engineering Commons](#), [Physical Sciences and Mathematics Commons](#), [Science and Mathematics Education Commons](#), and the [United States History Commons](#)

Nebraska Tractor Test Lab, "Test 1694: White 6124 Diesel 32-Speed" (1995). *Nebraska Tractor Tests*. 2003.

<https://digitalcommons.unl.edu/tractormuseumlit/2003>

This Article is brought to you for free and open access by the Tractor Test and Power Museum, The Lester F. Larsen at DigitalCommons@University of Nebraska - Lincoln. It has been accepted for inclusion in Nebraska Tractor Tests by an authorized administrator of DigitalCommons@University of Nebraska - Lincoln.

NEBRASKA OECD TRACTOR TEST 1694—SUMMARY 180

WHITE 6124 DIESEL

32 SPEED

Location of Test: Tractor Testing Laboratory,
University of Nebraska, Lincoln, Nebraska 68583-0832

Dates of Test: May 30 to June 16, 1995

Manufacturer: AGCO Corporation, Duluth,
Georgia 30136

POWER TAKE-OFF PERFORMANCE

| Power HP (kW) | Crank shaft speed rpm | Gal/hr (l/h) | lb/hp.hr (kg/kW.h) | Hp.hr/gal (kW.h/l) | Mean Atmospheric Conditions |
|---|--------------------------------|-----------------|-----------------------|-----------------------|--------------------------------|
| MAXIMUM POWER AND FUEL CONSUMPTION | | | | | |
| Rated Engine Speed—(PTO speed—1052 rpm) | | | | | |
| 124.94 (93.17) | 2200 | 7.26 (27.49) | 0.405 (0.247) | 17.20 (3.39) | |
| Standard Power Take-off Speed (1000 rpm) | | | | | |
| 124.05 (92.50) | 2090 | 7.05 (24.68) | 0.396 (0.241) | 17.60 (3.47) | |

VARYING POWER AND FUEL CONSUMPTION

| | | | | | |
|-------------------|------|-----------------|--------------------|-----------------|----------------------|
| 124.94 (93.17) | 2200 | 7.26 (27.49) | 0.405 (0.247) | 17.20 (3.39) | Air temperature |
| 107.73 (80.33) | 2231 | 6.50 (24.60) | 0.421 (0.256) | 16.57 (3.27) | 75°F (24°C) |
| 81.48 (60.76) | 2247 | 5.34 (20.20) | 0.457 (0.278) | 15.26 (3.01) | Relative humidity |
| 54.83 (40.89) | 2280 | 4.39 (16.61) | 0.558 (0.339) | 12.49 (2.46) | 59% |
| 27.65 (20.62) | 2299 | 3.27 (12.38) | 0.825 (0.502) | 8.46 (1.67) | Barometer |
| 0.83 (0.62) | 2332 | 2.24 (8.47) | 18.359 (11.168) | 0.37 (0.07) | 28.91"Hg (97.90 kPa) |

Maximum Torque 375 lb.-ft. (509Nm) at 1399 rpm
Maximum Torque Rise 25.7%
Torque rise at 1799 rpm 16%

DRAWBAR PERFORMANCE

(Unballasted—Front Drive Engaged)

FUEL CONSUMPTION CHARACTERISTICS

| Power Hp (kW) | Drawbar pull lbs (kN) | Speed mph (km/h) | Crank- shaft speed rpm | Slip % | Fuel Consumption lb/hp.hr (kg/kW.h) | Hp.hr/gal (kW.h/l) | Temp.°F (°C) cool- ing med | Air dry bulb | Barom. inch Hg (kPa) |
|--|--------------------------------|------------------------|---------------------------------|-----------|---|-----------------------|-------------------------------------|--------------------|-------------------------------|
| Maximum Power—13th (A1H) Gear | | | | | | | | | |
| 112.65 (84.00) | 8627 (38.37) | 4.90 (7.88) | 2199 | 3.66 | 0.450 (0.274) | 15.50 (3.05) | 182 (83) | 71 (22) | 28.83 (97.63) |
| 75% of Pull at Maximum Power—13th (A1H) Gear | | | | | | | | | |
| 86.87 (64.78) | 6471 (28.78) | 5.03 (8.10) | 2237 | 2.71 | 0.480 (0.292) | 14.51 (2.86) | 181 (83) | 72 (22) | 28.82 (97.60) |
| 50% of Pull at Maximum Power—13th (A1H) Gear | | | | | | | | | |
| 59.18 (44.13) | 4309 (19.17) | 5.15 (8.29) | 2273 | 1.82 | 0.565 (0.344) | 12.34 (2.43) | 172 (78) | 72 (22) | 28.82 (97.60) |
| 75% of Pull at Reduced Engine Speed—18th (C1H) Gear | | | | | | | | | |
| 86.83 (64.73) | 6472 (28.79) | 5.03 (8.10) | 1619 | 2.71 | 0.425 (0.259) | 16.40 (3.23) | 186 (86) | 72 (22) | 28.82 (97.60) |
| 50% of Pull at Reduced Engine Speed—18th (C1H) Gear | | | | | | | | | |
| 59.16 (44.11) | 4314 (19.19) | 5.14 (8.28) | 1641 | 1.91 | 0.473 (0.288) | 14.75 (2.91) | 173 (78) | 72 (22) | 28.82 (97.60) |

FUEL OIL and TIME: Fuel No. 2 Diesel **Cetane No. 50.6 Specific gravity converted to 60°/60° F (15°/15°C)** 0.8374 **Fuel weight** 6.972 lbs/gal (0.836 kg/l) **Oil SAE 15W-40 API service classification** CD-II, SG **To motor** 3.656 gal (13.839 l) **Drained from motor** 3.189 gal (12.073 l) **Transmission and hydraulic lubricant** AGCO Power Fluid 821XL **Front axle lubricant** AGCO Gear Lube 715 SAE 80W-90 **Total time engine was operated** 27.0 hours.

ENGINE: Make Cummins Diesel **Type** six cylinder vertical with turbocharger **Serial No.** 45044533 **Crankshaft** lengthwise **Rated engine speed** 2200 **Bore and stroke** (as specified) 4.016" × 4.72" (102.0 mm × 120.0 mm) **Compression ratio** 17.5 to 1 **Displacement** 359 cu in (5880 ml) **Starting system** 12 volt **Lubrication** pressure **Air cleaner** two paper elements and aspirator **Oil filter** one full flow cartridge **Oil cooler** engine coolant heat exchanger for crankcase oil, radiator for hydraulic and final drive oil, radiator for transmission oil **Fuel filter** two paper elements **Muffler** underhood **Exhaust** vertical **Cooling medium temperature control** one thermostat.

ENGINE OPERATING PARAMETERS: **Fuel rate:** 50.5-55.8 lb/h (22.9-25.3 kg/h) **High idle:** 2325-2425 rpm **Turbo boost** nominal 10.3 psi (71 kPa) as measured 14.0 psi (97 kPa)

CHASSIS: **Type** front wheel assist **Serial No.** 62551ML **Tread width** rear 61.5" (1562 mm) to 127.5" (3239 mm) front 59.7" (1516 mm) to 91.4" (2322 mm) **Wheel base** 106.0" (2692 mm) **Hydraulic control system** direct engine drive **Transmission** selective gear fixed ratio with partial (4) range operator controlled powershift **Nominal travel speeds mph (km/h)** first 1.53 (2.46) second 1.79 (2.88) third 2.11 (3.40) fourth 2.32 (3.73) fifth 2.47 (3.97) sixth 2.72 (4.37) seventh 3.20 (5.15) eighth 3.31 (5.33) ninth 3.75 (6.03) tenth 3.88 (6.24) eleventh 4.51 (7.25) twelfth 4.57 (7.36) thirteenth 5.03 (8.10) fourteenth 5.28 (8.49) fifteenth 5.36 (8.62) sixteenth 5.88 (9.47) seventeenth 6.23 (10.02) eighteenth 6.95 (11.18) nineteenth 7.29 (11.73) twentieth 7.64 (12.29) twenty-first 8.13 (13.09) twenty-second 8.94 (14.38) twenty-third 10.54 (16.97) twenty-fourth 10.91 (17.55) twenty-fifth 12.35 (19.87) twenty-sixth 12.76 (20.54) twenty-seventh 14.85 (23.89) twenty-eighth 15.07 (24.25) twenty-ninth 17.37 (27.96) thirtieth 17.64 (28.38) thirty-first 20.51 (33.00) thirty-second 24.00 (38.63) reverse 1.53 (2.46), 1.79 (2.88), 2.11 (3.40), 2.32 (3.73), 2.47 (3.97), 2.72 (4.37), 3.20 (5.15), 3.31 (5.33),

DRAWBAR PERFORMANCE
(Unballasted—Front Drive Engaged)
MAXIMUM POWER IN SELECTED GEARS

| Power Hp (kW) | Drawbar pull lbs (kN) | Speed mph (km/h) | Crank- shaft speed rpm | Slip % | Fuel Consumption lb/hp.hr (kg/kW.h) | Temp.°F (°C) cool- ing med | Air dry bulb | Barom. inch Hg (kPa) |
|---------------------|--------------------------------|------------------------|---------------------------------|-----------|---|-------------------------------------|--------------------|-------------------------------|
| 6th (B2L) Gear | | | | | | | | |
| 92.10 (68.68) | 14542 (64.68) | 2.38 (3.82) | 2231 | 14.58 | 0.515 (0.313) | 178 (81) | 62 (17) | 28.85 (97.70) |
| 7th (C2L) Gear | | | | | | | | |
| 107.38 (80.07) | 13573 (60.37) | 2.97 (4.77) | 2197 | 8.10 | 0.468 (0.285) | 172 (78) | 62 (17) | 28.85 (97.70) |
| 8th (A3L) Gear | | | | | | | | |
| 108.41 (80.84) | 13146 (58.48) | 3.09 (4.98) | 2198 | 7.47 | 0.462 (0.281) | 175 (79) | 63 (17) | 28.86 (97.73) |
| 9th (D2L) Gear | | | | | | | | |
| 110.61 (82.48) | 11659 (51.86) | 3.56 (5.73) | 2197 | 6.02 | 0.459 (0.279) | 185 (85) | 70 (21) | 28.84 (97.66) |
| 10th (B3L) Gear | | | | | | | | |
| 111.65 (83.26) | 11318 (50.34) | 3.70 (5.95) | 2198 | 5.36 | 0.451 (0.275) | 185 (85) | 63 (17) | 28.86 (97.73) |
| 11th (A4L) Gear | | | | | | | | |
| 111.47 (83.12) | 9600 (42.70) | 4.35 (7.01) | 2197 | 4.43 | 0.452 (0.275) | 178 (81) | 70 (21) | 28.84 (97.66) |
| 12th (C3L) Gear | | | | | | | | |
| 110.61 (82.48) | 9345 (41.57) | 4.44 (7.14) | 2202 | 4.09 | 0.458 (0.278) | 174 (79) | 69 (21) | 28.84 (97.66) |
| 13th (A1H) Gear | | | | | | | | |
| 112.65 (84.00) | 8627 (38.37) | 4.90 (7.88) | 2199 | 3.66 | 0.450 (0.274) | 182 (83) | 71 (22) | 28.83 (97.63) |
| 14th (B4L) Gear | | | | | | | | |
| 110.89 (82.69) | 8072 (35.91) | 5.15 (8.29) | 2201 | 3.49 | 0.456 (0.278) | 179 (81) | 70 (21) | 28.84 (97.66) |
| 15th (D3L) Gear | | | | | | | | |
| 110.56 (82.44) | 7926 (35.26) | 5.23 (8.42) | 2202 | 3.41 | 0.457 (0.278) | 190 (88) | 69 (21) | 28.84 (97.66) |
| 16th (B1H) Gear | | | | | | | | |
| 112.05 (83.56) | 7291 (32.43) | 5.76 (9.28) | 2197 | 3.06 | 0.454 (0.276) | 182 (83) | 64 (18) | 28.87 (97.77) |
| 17th (C4L) Gear | | | | | | | | |
| 109.12 (81.37) | 6707 (29.83) | 6.10 (9.82) | 2194 | 2.71 | 0.463 (0.282) | 190 (88) | 65 (18) | 28.88 (97.80) |
| 18th (C1H) Gear | | | | | | | | |
| 110.94 (82.73) | 6094 (27.11) | 6.83 (10.99) | 2195 | 2.71 | 0.455 (0.277) | 185 (85) | 64 (18) | 28.87 (97.77) |
| 19th (D4L) Gear | | | | | | | | |
| 107.47 (80.14) | 5631 (25.05) | 7.16 (11.52) | 2191 | 2.36 | 0.468 (0.284) | 185 (85) | 67 (19) | 28.86 (97.73) |
| 20th (A2H) Gear | | | | | | | | |
| 111.21 (82.93) | 5557 (24.72) | 7.50 (12.08) | 2194 | 2.44 | 0.453 (0.275) | 185 (85) | 69 (21) | 28.84 (97.66) |
| 21st (D1L) Gear | | | | | | | | |
| 110.22 (82.19) | 5162 (22.96) | 8.01 (12.89) | 2190 | 2.00 | 0.464 (0.282) | 177 (81) | 69 (21) | 28.84 (97.66) |

TIRES, BALLAST AND WEIGHT

| | With Ballast | Without Ballast |
|--|----------------------------|----------------------------|
| Rear Tires —No., size, ply & psi (kPa) | Four 18.4R42; **, 20 (140) | Two 18.4R42; **, 20 (140) |
| Ballast —Duals (total) | 1680 lb (762 kg) | None |
| —Cast Iron (total) | None | None |
| Front Tires —No., size, ply & psi (kPa) | Two 14.9R30; ***, 24 (165) | Two 14.9R30; ***, 24 (165) |
| Ballast —Test equip. (total) | 94 lb (43 kg) | None |
| —Cast Iron (total) | 616 lb (279 kg) | None |
| Height of Drawbar | 25.0 in (635 mm) | 24.0 in (610 mm) |
| Static Weight with Operator —Rear | 11300 lb (5125 kg) | 9640 lb (4372 kg) |
| —Front | 6014 lb (2728 kg) | 5284 lb (2397 kg) |
| —Total | 17314 lb (7853 kg) | 14924 lb (6769 kg) |

3.75 (6.03), 3.88 (6.24), 4.51 (7.25), 4.57 (7.36), 5.03 (8.10), 5.28 (8.49), 5.36 (8.62), 5.88 (9.47), 6.23 (10.02), 6.95 (11.18), 7.29 (11.73), 7.64 (12.29), 8.13 (13.09), 8.94 (14.38), 10.54 (16.97), 10.91 (17.55), 12.35 (19.87), 12.76 (20.54), 14.85 (23.89), 15.07 (24.25), 17.37 (27.96), 17.64 (28.38), 20.51 (33.00), 24.00 (38.63) **Clutch** dual dry discs actuated by foot pedal **Brakes** wet multiple disc hydraulically actuated by two foot pedals which can be locked together **Steering** hydrostatic **Power take-off** 540 rpm at 1992 engine rpm and 1000 rpm at 2090 engine rpm **Unladen tractor mass** 14860 lb (6741 kg)

REPAIRS AND ADJUSTMENTS: No repairs or adjustments

REMARKS: All test results were determined from observed data obtained in accordance with official OECD, SAE and Nebraska test procedures. For the maximum power tests, the fuel temperature at the injection pump return was maintained at 143° F (62°C). The performance results on this summary were taken from OECD tests conducted under the Code II Restricted Standard Test Code procedure.

We, the undersigned, certify that this is a true and correct report of official Tractor Test No. **1694**, Summary 180, July 12, 1995.

LOUIS I. LEVITICUS
Engineer-in-Charge

L.L. BASHFORD
R.D. GRISSO
M.F. KOCHER
Board of Tractor Test Engineers

DRAWBAR PERFORMANCE
(Ballasted—Front Drive Disengaged)
FUEL CONSUMPTION CHARACTERISTICS

| Power Hp (kW) | Drawbar pull lbs (kN) | Speed mph (km/h) | Crank- shaft speed rpm | Slip % | Fuel Consumption | | Temp. °F (°C) | | Barom. inch Hg (kPa) |
|--|--------------------------------|------------------------|---------------------------------|-----------|------------------------|-----------------------|---------------------|--------------------|-------------------------------|
| | | | | | lb./hp.hr (kg/kW.h) | Hp.hr/gal (kW.h/l) | cool- ing med | Air dry bulb | |
| Maximum Power—13th (A1H) Gear | | | | | | | | | |
| 110.34 (82.28) | 8474 (37.69) | 4.88 (7.86) | 2195 | 3.79 | 0.453 (0.276) | 15.38 (3.03) | 186 (85) | 77 (25) | 28.48 (96.44) |
| 75% of Pull at Maximum Power—13th (A1H) Gear | | | | | | | | | |
| 85.61 (63.84) | 6360 (28.29) | 5.05 (8.12) | 2242 | 2.74 | 0.486 (0.295) | 14.36 (2.83) | 185 (85) | 81 (27) | 28.49 (96.48) |
| 50% of Pull at Maximum Power—13th (A1H) Gear | | | | | | | | | |
| 58.32 (43.49) | 4244 (18.88) | 5.15 (8.29) | 2268 | 1.86 | 0.569 (0.346) | 12.25 (2.41) | 184 (84) | 81 (27) | 28.49 (96.48) |
| 75% of Pull at Reduced Engine Speed—18th (C1H) Gear | | | | | | | | | |
| 85.58 (63.82) | 6360 (28.29) | 5.05 (8.12) | 1622 | 2.66 | 0.436 (0.265) | 16.00 (3.15) | 185 (85) | 81 (27) | 28.49 (96.48) |
| 50% of Pull at Reduced Engine Speed—18th (C1H) Gear | | | | | | | | | |
| 58.33 (43.50) | 4242 (18.87) | 5.16 (8.30) | 1643 | 1.77 | 0.476 (0.290) | 14.64 (2.88) | 184 (84) | 81 (27) | 28.49 (96.48) |
| MAXIMUM POWER IN SELECTED GEARS | | | | | | | | | |
| 6th (B2L) Gear | | | | | | | | | |
| 95.35 (71.10) | 15052 (66.95) | 2.38 (3.82) | 2225 | 14.41 | 0.510 (0.310) | 13.66 (2.69) | 174 (79) | 69 (21) | 28.46 (96.38) |
| 7th (C2L) Gear | | | | | | | | | |
| 108.25 (80.72) | 13514 (60.11) | 3.00 (4.83) | 2198 | 7.10 | 0.466 (0.283) | 14.96 (2.95) | 179 (82) | 71 (22) | 28.47 (96.41) |
| 8th (A3L) Gear | | | | | | | | | |
| 108.94 (81.24) | 13117 (58.35) | 3.11 (5.01) | 2198 | 6.94 | 0.462 (0.281) | 15.09 (2.97) | 191 (88) | 72 (22) | 28.48 (96.44) |
| 9th (D2L) Gear | | | | | | | | | |
| 109.12 (81.37) | 11466 (51.00) | 3.57 (5.74) | 2196 | 5.72 | 0.461 (0.280) | 15.12 (2.98) | 185 (85) | 73 (23) | 28.48 (96.44) |
| 10th (B3L) Gear | | | | | | | | | |
| 109.92 (81.96) | 11113 (49.43) | 3.71 (5.97) | 2198 | 5.39 | 0.458 (0.279) | 15.23 (3.00) | 184 (84) | 73 (23) | 28.48 (96.44) |
| 11th (A4L) Gear | | | | | | | | | |
| 110.41 (82.34) | 9508 (42.29) | 4.35 (7.01) | 2197 | 4.30 | 0.454 (0.276) | 15.36 (3.03) | 188 (86) | 74 (23) | 28.48 (96.44) |
| 12th (C3L) Gear | | | | | | | | | |
| 109.25 (81.47) | 9271 (41.24) | 4.42 (7.11) | 2194 | 4.38 | 0.461 (0.281) | 15.11 (2.98) | 185 (85) | 75 (24) | 28.48 (96.44) |
| 13th (A1H) Gear | | | | | | | | | |
| 110.34 (82.28) | 8474 (37.69) | 4.88 (7.86) | 2195 | 3.79 | 0.453 (0.276) | 15.38 (3.03) | 186 (85) | 77 (25) | 28.48 (96.44) |
| 14th (B4L) Gear | | | | | | | | | |
| 109.53 (81.68) | 8000 (35.58) | 5.13 (8.26) | 2193 | 3.53 | 0.460 (0.280) | 15.14 (2.98) | 186 (85) | 74 (23) | 28.48 (96.44) |
| 15th (D3L) Gear | | | | | | | | | |
| 109.04 (81.31) | 7844 (34.89) | 5.21 (8.39) | 2195 | 3.53 | 0.462 (0.281) | 15.09 (2.97) | 185 (85) | 76 (24) | 28.48 (96.44) |
| 16th (B1H) Gear | | | | | | | | | |
| 110.23 (82.20) | 7177 (31.92) | 5.76 (9.27) | 2196 | 3.18 | 0.452 (0.275) | 15.41 (3.04) | 186 (85) | 78 (26) | 28.48 (96.44) |
| 17th (C4L) Gear | | | | | | | | | |
| 106.88 (79.70) | 6573 (29.24) | 6.10 (9.81) | 2190 | 2.83 | 0.470 (0.286) | 14.84 (2.92) | 185 (85) | 79 (26) | 28.48 (96.44) |
| 18th (C1H) Gear | | | | | | | | | |
| 108.83 (81.15) | 5959 (26.50) | 6.85 (11.02) | 2198 | 2.57 | 0.459 (0.279) | 15.20 (3.00) | 184 (84) | 80 (27) | 28.48 (96.44) |
| 19th (D4L) Gear | | | | | | | | | |
| 105.54 (78.70) | 5503 (24.48) | 7.19 (11.57) | 2197 | 2.39 | 0.475 (0.289) | 14.68 (2.89) | 186 (86) | 79 (26) | 28.48 (96.44) |
| 20th (A2H) Gear | | | | | | | | | |
| 109.88 (81.94) | 5472 (23.34) | 7.53 (12.12) | 2195 | 2.30 | 0.456 (0.277) | 15.29 (3.01) | 187 (86) | 80 (27) | 28.48 (96.44) |
| 21st (D1H) Gear | | | | | | | | | |
| 108.82 (81.14) | 5066 (22.53) | 8.05 (12.96) | 2200 | 2.22 | 0.461 (0.281) | 15.12 (2.98) | 189 (87) | 81 (27) | 28.49 (96.48) |

DRAWBAR PERFORMANCE
(Ballasted—Front Drive Engaged)
MAXIMUM POWER IN SELECTED GEARS

| Power Hp (kW) | Drawbar pull lbs (kN) | Speed mph (km/h) | Crank- shaft speed rpm | Slip % | Fuel Consumption lb/hp.hr (kg/kW.h) | Hp.hr/gal (kW.h/l) | Temp. °F (°C) cool- ing med | Air dry- bulb | Barom. inch Hg (kPa) |
|---------------------|--------------------------------|------------------------|---------------------------------|-----------|---|-----------------------|--------------------------------------|---------------------|-------------------------------|
| 4th (A2L) Gear | | | | | | | | | |
| 97.15 (72.45) | 17736 (78.89) | 2.05 (3.31) | 2221 | 13.49 | 0.506 (0.308) | 13.79 (2.72) | 174 (79) | 70 (21) | 28.73 (97.29) |
| 5th (D1L) Gear | | | | | | | | | |
| 102.85 (76.70) | 17171 (76.38) | 2.25 (3.62) | 2213 | 10.83 | 0.485 (0.295) | 14.36 (2.83) | 172 (78) | 70 (21) | 28.70 (97.19) |
| 6th (B2L) Gear | | | | | | | | | |
| 107.96 (80.51) | 15883 (70.65) | 2.55 (4.10) | 2200 | 7.46 | 0.467 (0.284) | 14.91 (2.94) | 175 (79) | 70 (21) | 28.71 (97.22) |
| 7th (C2L) Gear | | | | | | | | | |
| 108.73 (81.08) | 13258 (58.97) | 3.08 (4.95) | 2200 | 5.42 | 0.463 (0.282) | 15.06 (2.97) | 175 (79) | 74 (23) | 28.68 (97.12) |
| 8th (A3L) Gear | | | | | | | | | |
| 110.55 (82.43) | 13042 (58.01) | 3.18 (5.12) | 2198 | 5.26 | 0.457 (0.278) | 15.26 (3.01) | 188 (87) | 75 (24) | 28.67 (97.09) |
| 9th (D2L) Gear | | | | | | | | | |
| 110.49 (82.39) | 11397 (50.70) | 3.64 (5.85) | 2197 | 4.16 | 0.457 (0.278) | 15.26 (3.01) | 185 (85) | 74 (23) | 28.68 (97.12) |
| 10th (B3L) Gear | | | | | | | | | |
| 110.52 (82.41) | 11018 (49.01) | 3.76 (6.05) | 2196 | 4.24 | 0.455 (0.277) | 15.34 (3.02) | 185 (85) | 76 (24) | 28.66 (97.05) |
| 11th (A4L) Gear | | | | | | | | | |
| 111.63 (83.25) | 9499 (42.25) | 4.41 (7.09) | 2194 | 3.38 | 0.452 (0.275) | 15.41 (3.04) | 187 (86) | 77 (25) | 28.66 (97.05) |
| 12th (C3L) Gear | | | | | | | | | |
| 109.50 (81.66) | 9161 (40.75) | 4.48 (7.21) | 2196 | 3.29 | 0.458 (0.279) | 15.22 (3.00) | 186 (85) | 78 (26) | 28.65 (97.02) |
| 13th (A1H) Gear | | | | | | | | | |
| 111.75 (83.34) | 8498 (37.80) | 4.93 (7.94) | 2190 | 3.03 | 0.450 (0.274) | 15.50 (3.05) | 185 (85) | 79 (26) | 28.62 (96.92) |
| 14th (B4L) Gear | | | | | | | | | |
| 109.96 (81.99) | 7929 (35.27) | 5.20 (8.37) | 2198 | 2.94 | 0.459 (0.279) | 15.17 (2.99) | 186 (86) | 77 (25) | 28.66 (97.05) |
| 15th (D3L) Gear | | | | | | | | | |
| 109.28 (81.49) | 7770 (34.56) | 5.27 (8.49) | 2195 | 2.68 | 0.459 (0.279) | 15.20 (2.99) | 185 (85) | 78 (26) | 28.65 (97.02) |
| 16th (B1H) Gear | | | | | | | | | |
| 111.70 (83.29) | 7200 (32.02) | 5.82 (9.36) | 2196 | 2.59 | 0.451 (0.274) | 15.46 (3.05) | 186 (85) | 79 (26) | 28.64 (96.99) |
| 17th (C4L) Gear | | | | | | | | | |
| 107.60 (80.24) | 6541 (29.10) | 6.17 (9.93) | 2196 | 2.24 | 0.466 (0.284) | 14.96 (2.95) | 186 (86) | 79 (26) | 28.62 (96.92) |
| 18th (C1H) Gear | | | | | | | | | |
| 109.23 (81.45) | 5940 (26.42) | 6.90 (11.10) | 2195 | 2.06 | 0.460 (0.280) | 15.16 (2.99) | 186 (85) | 79 (26) | 28.63 (96.95) |
| 19th (D4L) Gear | | | | | | | | | |
| 106.83 (79.67) | 5530 (24.60) | 7.24 (11.66) | 2195 | 1.88 | 0.473 (0.287) | 14.75 (2.91) | 186 (86) | 80 (27) | 28.61 (96.88) |
| 20th (A2H) Gear | | | | | | | | | |
| 109.93 (81.97) | 5427 (24.14) | 7.60 (12.22) | 2196 | 1.79 | 0.456 (0.277) | 15.29 (3.01) | 186 (86) | 80 (27) | 28.61 (96.88) |
| 21st (D1H) Gear | | | | | | | | | |
| 108.72 (81.07) | 5030 (22.37) | 8.11 (13.04) | 2196 | 1.70 | 0.464 (0.283) | 15.01 (2.96) | 186 (85) | 80 (27) | 28.61 (96.88) |

TRACTOR SOUND LEVEL WITH CAB

dB(A)

At 75% load in 12th (C3L) gear

76.0

Bystander

—

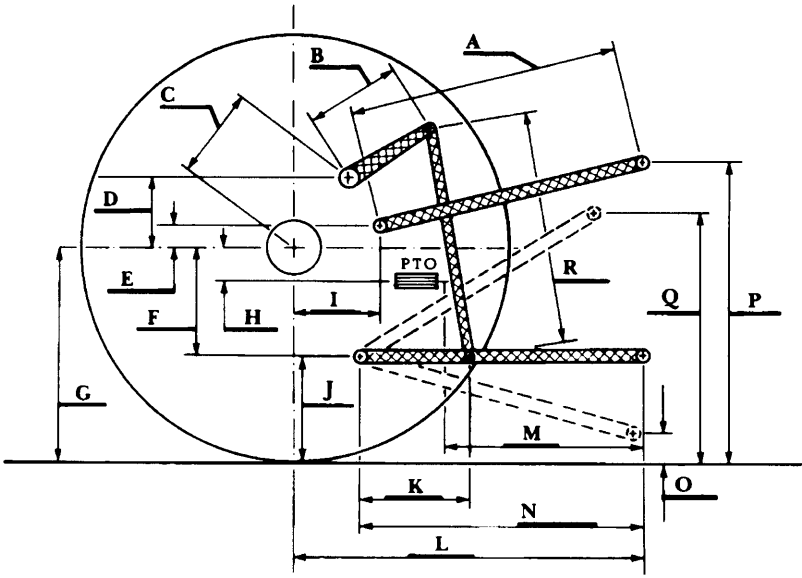
THREE POINT HITCH PERFORMANCE (OECD Static Test)

CATEGORY: III

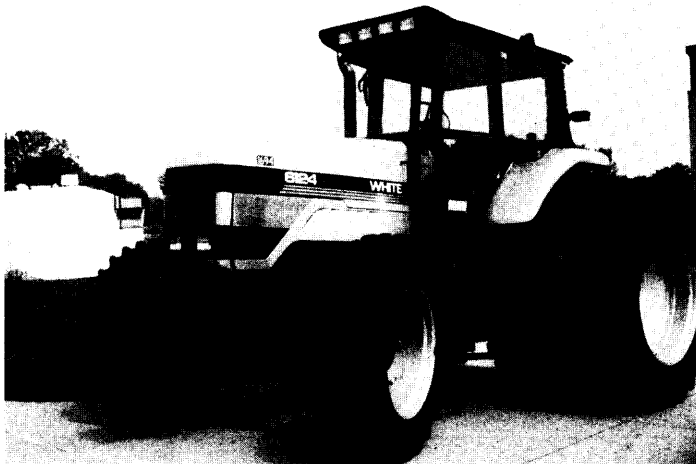
Quick Attach: None

| | | |
|--|-----------|---------------|
| Maximum Force Exerted Through Whole Range: | 12087 lbs | (53.8 kN) |
| i) Opening pressure of relief valve: | NA | |
| Sustained pressure with pump stalled: | 2860 psi | (197 bar) |
| ii) Pump delivery rate at minimum pressure and rated engine speed: | 31.5 GPM | (119.2 l/min) |
| iii) Pump delivery rate at maximum hydraulic power: | 24.7 GPM | (94.3 l/min) |
| Delivery pressure: | 2500 psi | (172 bar) |
| Power: | 36.3 HP | (27.1 kW) |

HITCH DIMENSIONS AS TESTED—NO LOAD



| | inch | mm |
|---|------|------|
| A | 30.5 | 775 |
| B | 14.3 | 362 |
| C | 18.5 | 470 |
| D | 17.0 | 432 |
| E | 9.3 | 237 |
| F | 11.8 | 300 |
| G | 35.0 | 889 |
| H | 3.0 | 76 |
| I | 16.9 | 428 |
| J | 23.2 | 589 |
| K | 23.6 | 600 |
| L | 47.2 | 1199 |
| M | 25.5 | 648 |
| N | 38.4 | 975 |
| O | 9.0 | 229 |
| P | 51.4 | 1306 |
| Q | 34.2 | 870 |
| R | 33.3 | 845 |



WHITE 6124 DIESEL

Agricultural Research Division
 Institute of Agriculture and Natural Resources
 University of Nebraska-Lincoln
 Darrell Nelson, Dean and Director