

University of Nebraska - Lincoln

DigitalCommons@University of Nebraska - Lincoln

Nebraska Tractor Tests

Tractor Test and Power Museum, The Lester F.
Larsen

January 1995

Test 1695: White 6144 Diesel 32-Speed

Nebraska Tractor Test Lab

University of Nebraska-Lincoln, tractortestlab@unl.edu

Follow this and additional works at: <https://digitalcommons.unl.edu/tractormuseumlit>



Part of the [Energy Systems Commons](#), [History of Science, Technology, and Medicine Commons](#), [Other Mechanical Engineering Commons](#), [Physical Sciences and Mathematics Commons](#), [Science and Mathematics Education Commons](#), and [the United States History Commons](#)

Nebraska Tractor Test Lab, "Test 1695: White 6144 Diesel 32-Speed" (1995). *Nebraska Tractor Tests*. 2004.

<https://digitalcommons.unl.edu/tractormuseumlit/2004>

This Article is brought to you for free and open access by the Tractor Test and Power Museum, The Lester F. Larsen at DigitalCommons@University of Nebraska - Lincoln. It has been accepted for inclusion in Nebraska Tractor Tests by an authorized administrator of DigitalCommons@University of Nebraska - Lincoln.

NEBRASKA OECD TRACTOR TEST 1695—SUMMARY 181

WHITE 6144 DIESEL

32 SPEED

Location of Test: Tractor Testing Laboratory,
University of Nebraska, Lincoln, Nebraska 68583-0832

Dates of Test: June 1-14, 1995

Manufacturer: AGCO Corporation, Duluth,
Georgia 30136

POWER TAKE-OFF PERFORMANCE

Power HP (kW)	Crank shaft speed rpm	Gal/hr (l/h)	lb/hp.hr (kg/kW.h)	Hp.hr/gal (kW.h/l)	Mean Atmospheric Conditions
MAXIMUM POWER AND FUEL CONSUMPTION					
Rated Engine Speed—(PTO speed—1053 rpm)					
142.56 (106.31)	2200	8.04 (30.43)	0.393 (0.239)	17.73 (3.49)	
Standard Power Take-off Speed (1000 rpm)					
144.31 (107.61)	2090	7.95 (30.10)	0.384 (0.234)	18.15 (3.58)	
Maximum Power (2 Hours)					
144.31 (107.61)	2090	7.95 (30.10)	0.384 (0.234)	18.15 (3.58)	

VARYING POWER AND FUEL CONSUMPTION

142.56 (106.31)	2200	8.04 (30.43)	0.393 (0.239)	17.73 (3.49)	Air temperature
123.54 (92.12)	2245	7.19 (27.20)	0.406 (0.247)	17.19 (3.39)	74°F (23°C)
94.14 (70.20)	2276	5.90 (22.32)	0.437 (0.266)	15.97 (3.15)	Relative humidity
63.34 (47.23)	2302	4.56 (17.59)	0.512 (0.311)	13.63 (2.68)	69%
32.36 (24.13)	2337	3.44 (13.03)	0.742 (0.451)	9.40 (1.85)	Barometer
0.87 (0.65)	2378	2.28 (8.63)	18.340 (11.156)	0.38 (0.07)	28.84" Hg (97.65 kPa)

Maximum Torque 433 lb.-ft. (586 Nm) at 1496 rpm
Maximum Torque Rise 27.1%
Torque rise at 1799 rpm 17%

DRAWBAR PERFORMANCE

(Unballasted—Front Drive Engaged)

FUEL CONSUMPTION CHARACTERISTICS

Power Hp (kW)	Drawbar pull lbs (kN)	Speed mph (km/h)	Crank- shaft speed rpm	Slip %	Fuel Consumption lb/hp.hr (kg/kW.h)	Hp.hr/gal (kW.h/l)	Temp. °F (°C) cool- ing med	Air dry bulb	Barom. inch Hg (kPa)
Maximum Power—16th (B1H) Gear									
126.94 (94.66)	8299 (36.91)	5.74 (9.23)	2196	3.43	0.439 (0.267)	15.88 (3.13)	184 (84)	72 (22)	28.95 (98.04)
75% of Pull at Maximum Power—16th (B1H) Gear									
99.24 (74.01)	6229 (27.71)	5.97 (9.62)	2266	2.47	0.467 (0.284)	14.92 (2.94)	181 (83)	77 (25)	28.92 (97.93)
50% of Pull at Maximum Power—16th (B1H) Gear									
67.63 (50.43)	4151 (18.46)	6.11 (9.83)	2298	1.67	0.544 (0.331)	12.82 (2.53)	181 (83)	77 (25)	28.92 (97.93)
75% of Pull at Reduced Engine Speed—21st (D1H) Gear									
99.42 (74.13)	6225 (27.69)	5.99 (9.64)	1645	2.56	0.426 (0.259)	16.36 (3.22)	185 (85)	77 (25)	28.92 (97.93)
50% of Pull at Reduced Engine Speed—21st (D1H) Gear									
67.53 (50.36)	4155 (18.48)	6.09 (9.81)	1662	1.76	0.467 (0.284)	14.93 (2.94)	183 (84)	77 (25)	28.92 (97.93)

FUEL OIL and TIME: Fuel No. 2 Diesel **Cetane No. 50.6 Specific gravity converted to 60°/60° F (15°/15°C) 0.8374 Fuel weight 6.972 lbs/gal (0.836 kg/l) Oil SAE 15W-40 API service classification CD-II, SG To motor 3.452 gal (13.069 l) Drained from motor 3.037 gal (11.495 l) Transmission and hydraulic lubricant AGCO Power Fluid 821XL Front axle lubricant AGCO Gear Lube 715 SAE 80W-90 Total time engine was operated 29.5 hours.**

ENGINE: Make Cummins Diesel **Type** six cylinder vertical with turbocharger and intercooler **Serial No.** 45090905 **Crankshaft** lengthwise **Rated engine speed 2200 Bore and stroke** (as specified) 4.016" × 4.72" (102.0 mm × 120.0 mm) **Compression ratio 16.5 to 1 Displacement 359 cu in (5880 ml) Starting system 12 volt Lubrication pressure Air cleaner** two paper elements and aspirator **Oil filter** one full flow cartridge **Oil cooler** engine coolant heat exchanger for crankcase oil, radiator for hydraulic and final drive oil, radiator for transmission oil **Fuel filter** two paper elements **Muffler** underhood **Exhaust vertical Cooling medium temperature control** one thermostat.

ENGINE OPERATING PARAMETERS: **Fuel rate:** 55.3-61.5 lb/h (25.1-27.9 kg/h) **High idle:** 2325-2425 rpm **Turbo boost** nominal 15.2 psi (105 kPa) as measured 15.4 psi (106 kPa)

CHASSIS: **Type** front wheel assist **Serial No.** 625513ML **Tread width** rear 61.5" (1562 mm) to 127.5" (3239 mm) front 59.7" (1516 mm) to 91.4" (2322 mm) **Wheel base 106.0" (2692 mm) Hydraulic control system** direct engine drive **Transmission** selective gear fixed ratio with partial (4) range operator controlled powershift **Nominal travel speeds mph (km/h)** first 1.53 (2.46) second 1.79 (2.88) third 2.11 (3.40) fourth 2.32 (3.73) fifth 2.47 (3.97) sixth 2.72 (4.37) seventh 3.20 (5.15) eighth 3.31 (5.33) ninth 3.75 (6.03) tenth 3.88 (6.24) eleventh 4.51 (7.25) twelfth 4.57 (7.36) thirteenth 5.03 (8.10) fourteenth 5.28 (8.49) fifteenth 5.36 (8.62) sixteenth 5.88 (9.47) seventeenth 6.23 (10.02) eighteenth 6.95 (11.18) nineteenth 7.29 (11.73) twentieth 7.64 (12.29) twenty-first 8.13 (13.09) twenty-second 8.94 (14.38) twenty-third 10.54 (16.97) twenty-fourth 10.91 (17.55) twenty-fifth 12.35 (19.87) twenty-sixth 12.76 (20.54) twenty-seventh 14.85 (23.89) twenty-eighth 15.07 (24.25) twenty-ninth 17.37 (27.96) thirtieth 17.64 (28.38) thirty-first 20.51 (33.00) thirty-second 24.00 (38.63) reverse 1.53 (2.46), 1.79 (2.88), 2.11 (3.40), 2.32 (3.73), 2.47 (3.97), 2.72 (4.37), 3.20 (5.15), 3.31 (5.33),

DRAWBAR PERFORMANCE
(Unballasted—Front Drive Engaged)
MAXIMUM POWER IN SELECTED GEARS

Power Hp (kW)	Drawbar pull lbs (kN)	Speed mph (km/h)	Crank- shaft speed rpm	Slip %	Fuel Consumption lb/hp.hr (kg/kWh)	Temp.°F(°C) cool- ing med	Air dry bulb	Barom. inch Hg (kPa)	
8th (A3L) Gear									
110.73 (82.57)	14369 (63.92)	2.89 (4.65)	2228	14.72	0.497 (0.303)	14.02 (2.76)	195 (90)	63 (17)	28.96 (98.07)
9th (D2L) Gear									
119.18 (88.87)	13650 (60.72)	3.27 (5.27)	2127	10.48	0.466 (0.283)	14.97 (2.95)	184 (84)	67 (19)	28.96 (98.07)
10th (B3L) Gear									
121.76 (90.80)	13496 (60.03)	3.38 (5.44)	2091	8.97	0.452 (0.275)	15.43 (3.04)	174 (79)	65 (18)	28.96 (98.07)
11th (A4L) Gear									
125.53 (93.61)	11545 (51.35)	4.08 (6.56)	2096	6.04	0.439 (0.267)	15.88 (3.13)	186 (86)	70 (21)	28.98 (98.14)
12th (C3L) Gear									
124.50 (92.84)	11208 (49.86)	4.17 (6.70)	2097	5.46	0.442 (0.269)	15.79 (3.11)	184 (84)	71 (22)	28.98 (98.14)
13th (A1H) Gear									
127.62 (95.16)	10379 (46.17)	4.61 (7.42)	2095	4.80	0.431 (0.262)	16.17 (3.19)	184 (84)	72 (22)	28.97 (98.10)
14th (B4L) Gear									
126.34 (94.22)	9767 (43.45)	4.85 (7.81)	2096	4.46	0.436 (0.265)	16.00 (3.15)	183 (84)	70 (21)	28.98 (98.14)
15th (D3L) Gear									
125.58 (93.64)	9554 (42.50)	4.93 (7.93)	2096	4.37	0.437 (0.266)	15.94 (3.14)	185 (85)	72 (22)	28.98 (98.14)
16th (A1H) Gear									
127.72 (95.24)	8778 (39.04)	5.46 (8.78)	2096	3.78	0.429 (0.261)	16.27 (3.20)	185 (85)	72 (22)	28.96 (98.07)
17th (C4L) Gear									
125.19 (93.36)	8123 (36.13)	5.78 (9.30)	2095	3.52	0.436 (0.265)	15.98 (3.15)	184 (84)	72 (22)	28.94 (98.00)
18th (C1H) Gear									
126.52 (94.35)	7292 (32.43)	6.51 (10.47)	2102	3.00	0.434 (0.264)	16.05 (3.16)	185 (85)	73 (23)	28.93 (97.97)
19th (D4L) Gear									
124.04 (92.50)	6834 (30.40)	6.81 (10.96)	2094	2.82	0.440 (0.268)	15.83 (3.12)	185 (85)	72 (22)	28.94 (98.00)
20th (A2H) Gear									
126.08 (94.02)	6627 (29.48)	7.14 (11.48)	2095	2.74	0.433 (0.264)	16.09 (3.17)	185 (85)	74 (23)	28.92 (97.93)
21st (D1H) Gear									
126.32 (94.20)	6241 (27.76)	7.59 (12.22)	2085	2.56	0.438 (0.266)	15.92 (3.14)	185 (85)	73 (23)	28.93 (97.97)
22nd (B2H) Gear									
124.81 (93.07)	5584 (24.84)	8.38 (13.49)	2093	2.47	0.440 (0.267)	15.86 (3.12)	185 (85)	74 (23)	28.92 (97.93)

3.75 (6.03), 3.88 (6.24), 4.51 (7.25), 4.57 (7.36), 5.03 (8.10), 5.28 (8.49), 5.36 (8.62), 5.88 (9.47), 6.23 (10.02), 6.95 (11.18), 7.29 (11.73), 7.64 (12.29), 8.13 (13.09), 8.94 (14.38), 10.54 (16.97), 10.91 (17.55), 12.35 (19.87), 12.76 (20.54), 14.85 (23.89), 15.07 (24.25), 17.37 (27.96), 17.64 (28.38), 20.51 (33.00), 24.00 (38.63) **Clutch** dual dry discs actuated by foot pedal **Brakes** wet multiple disc hydraulically actuated by two foot pedals which can be locked together **Steering** hydrostatic **Power take-off** 540 rpm at 1992 engine rpm and 1000 rpm at 2090 engine rpm **Unladen tractor mass** 14860 lb (6741 kg)

REPAIRS AND ADJUSTMENTS: No repairs or adjustments

REMARKS: All test results were determined from observed data obtained in accordance with official OECD, SAE and Nebraska test procedures. For the maximum power tests, the fuel temperature at the injection pump return was maintained at 143° F (62°C). The pull in 5th (D1L) gear was limited to avoid excessive tractor bouncing. The performance results on this summary were taken from OECD tests conducted under the Code II Restricted Standard Test Code procedure.

We, the undersigned, certify that this is a true and correct report of official Tractor Test No. **1695**, Summary 181, July 12, 1995.

LOUIS I. LEVITICUS
Engineer-in-Charge

L.L. BASHFORD
R.D. GRISSO
M.F. KOCHER
Board of Tractor Test Engineers

TIRES, BALLAST AND WEIGHT

	With Ballast	Without Ballast
Rear Tires —No., size, ply & psi (kPa)	Four 18.4R42; **, 20 (140)	Two 18.4R42; **, 20 (140)
Ballast —Duals (total)	1680 lb (762 kg)	None
—Cast Iron (total)	None	None
Front Tires —No., size, ply & psi (kPa)	Two 14.9R30; ***, 24 (165)	Two 14.9R30; ***, 24 (165)
Ballast —Test equip. (total)	162 lb (73 kg)	None
—Cast Iron (total)	616 lb (279 kg)	None
Height of Drawbar	25.0 in (635 mm)	24.0 in (610 mm)
Static Weight with Operator —Rear	11384 lb (5164 kg)	9770 lb (4432 kg)
—Front	6100 lb (2767 kg)	5256 lb (2384 kg)
—Total	17484 lb (7931 kg)	15026 lb (6816 kg)

DRAWBAR PERFORMANCE
(Ballasted—Front Drive Disengaged)
FUEL CONSUMPTION CHARACTERISTICS

Power Hp (kW)	Drawbar pull lbs (kN)	Speed mph (km/h)	Crank- shaft speed rpm	Slip %	Fuel Consumption		Temp. °F (°C)	Barom. inch Hg (kPa)	
					lb/hp.hr (kg/kW.h)	Hp.hr/gal (kW.h/l)	cool- ing med	Air dry bulb	
Maximum Power—13th (A1H) Gear									
125.14 (93.32)	9598 (42.69)	4.89 (7.87)	2201	3.93	0.441 (0.269)	15.79 (3.11)	185 (85)	53 (12)	28.89 (97.83)
75% of Pull at Maximum Power—13th (A1H) Gear									
97.76 (72.90)	7217 (32.10)	5.08 (8.18)	2264	3.07	0.469 (0.285)	14.86 (2.93)	183 (84)	55 (13)	28.92 (97.93)
50% of Pull at Maximum Power—13th (A1H) Gear									
66.98 (49.95)	4813 (21.41)	5.22 (8.40)	2304	2.19	0.543 (0.330)	12.84 (2.53)	181 (83)	55 (13)	28.92 (97.93)
75% of Pull at Reduced Engine Speed—18th (C1H) Gear									
97.87 (72.98)	7220 (32.11)	5.08 (8.18)	1640	3.07	0.422 (0.257)	16.51 (3.25)	184 (84)	55 (13)	28.92 (97.93)
50% of Pull at Reduced Engine Speed—18th (C1H) Gear									
66.87 (49.87)	4807 (21.38)	5.22 (8.40)	1668	2.10	0.465 (0.283)	14.98 (2.95)	182 (83)	55 (13)	28.92 (97.93)
MAXIMUM POWER IN SELECTED GEARS									
6th (B2L) Gear									
99.12 (73.91)	15431 (68.64)	2.41 (3.88)	2245	14.04	0.507 (0.308)	13.76 (2.71)	180 (82)	55 (13)	28.95 (98.04)
7th (C2L) Gear									
117.94 (87.88)	14967 (66.58)	2.95 (4.75)	2208	9.19	0.474 (0.288)	14.72 (2.90)	172 (78)	54 (12)	28.94 (98.00)
8th (A3L) Gear									
120.15 (89.60)	14496 (64.48)	3.11 (5.00)	2219	8.03	0.466 (0.283)	14.97 (2.95)	182 (83)	56 (13)	28.91 (97.90)
9th (D2L) Gear									
124.19 (92.61)	13867 (61.68)	3.36 (5.40)	2095	7.00	0.447 (0.272)	15.60 (3.07)	184 (84)	55 (13)	28.91 (97.90)
10th (B3L) Gear									
123.91 (92.40)	13289 (59.11)	3.50 (5.63)	2095	6.43	0.445 (0.271)	15.56 (3.08)	178 (81)	56 (13)	28.91 (97.90)
11th (A4L) Gear									
127.11 (94.78)	11560 (51.42)	4.12 (6.64)	2098	5.12	0.437 (0.266)	15.96 (3.14)	170 (76)	55 (13)	28.92 (97.93)
12th (C3L) Gear									
125.57 (93.64)	11242 (50.01)	4.19 (6.74)	2091	4.78	0.439 (0.267)	15.90 (3.13)	170 (76)	54 (12)	28.91 (97.90)
13th (A1H) Gear									
126.77 (94.53)	10265 (45.66)	4.63 (7.45)	2091	4.27	0.430 (0.262)	16.21 (3.19)	183 (84)	52 (11)	28.89 (97.83)
14th (B4L) Gear									
125.72 (93.75)	9665 (42.99)	4.88 (7.85)	2093	4.02	0.436 (0.265)	15.98 (3.15)	180 (82)	52 (11)	28.89 (97.83)
15th (D3L) Gear									
125.64 (93.69)	9501 (42.26)	4.96 (7.98)	2097	4.10	0.438 (0.266)	15.93 (3.14)	173 (78)	54 (12)	28.89 (97.83)
16th (B1H) Gear									
127.01 (94.71)	8737 (38.86)	5.45 (8.77)	2090	3.76	0.431 (0.262)	16.19 (3.19)	180 (82)	53 (12)	28.89 (97.83)
17th (C4L) Gear									
123.53 (92.11)	7998 (35.57)	5.79 (9.32)	2091	3.42	0.446 (0.271)	15.64 (3.08)	182 (83)	52 (11)	28.89 (97.83)
18th (C1H) Gear									
126.21 (94.12)	7295 (32.45)	6.49 (10.44)	2093	3.16	0.434 (0.264)	16.05 (3.16)	186 (85)	55 (13)	28.89 (97.83)
19th (D4L) Gear									
123.42 (92.03)	6754 (30.04)	6.85 (11.03)	2101	2.72	0.446 (0.271)	15.65 (3.08)	173 (78)	55 (13)	28.89 (97.83)
20th (A2H) Gear									
126.56 (94.37)	6632 (29.50)	7.16 (11.52)	2095	2.81	0.436 (0.265)	15.99 (3.15)	182 (83)	56 (13)	28.90 (97.87)
21st (D1H) Gear									
126.43 (94.28)	6194 (27.55)	7.65 (12.32)	2099	2.54	0.435 (0.264)	16.04 (3.16)	180 (82)	56 (13)	28.90 (97.87)
22nd (B2H) Gear									
125.39 (93.50)	5598 (24.90)	8.40 (13.52)	2095	2.45	0.439 (0.267)	15.90 (3.13)	190 (88)	56 (13)	28.90 (97.87)

DRAWBAR PERFORMANCE
(Ballasted—Front Drive Engaged)
MAXIMUM POWER IN SELECTED GEARS

Power Hp (kW)	Drawbar pull lbs (kN)	Speed mph (km/h)	Crank- shaft speed rpm	Slip %	Fuel Consumption lb/hp.hr (kg/kWh)	Hp.hr/gal (kWh/l)	Temp.°F; °C; cool- ing med	Air dry bulb	Barom. inch Hg (kPa)
5th (D1L) Gear									
109.52 (81.67)	18442 (82.03)	2.23 (3.58)	2239	12.79	0.491 (0.298)	14.21 (2.80)	171 (77)	55 (13)	28.95 (98.04)
6th (B2L) Gear									
117.74 (87.80)	17449 (77.62)	2.53 (4.07)	2229	9.34	0.465 (0.283)	14.99 (2.95)	180 (82)	55 (13)	28.95 (98.04)
7th (C2L) Gear									
124.51 (92.85)	16153 (71.85)	2.89 (4.65)	2110	7.38	0.446 (0.271)	15.63 (3.08)	185 (85)	55 (13)	28.91 (97.90)
8th (A3L) Gear									
126.05 (93.99)	14957 (66.53)	3.16 (5.09)	2197	6.00	0.447 (0.272)	15.58 (3.07)	183 (84)	56 (13)	28.90 (97.87)
9th (D2L) Gear									
127.72 (95.24)	13950 (62.05)	3.43 (5.53)	2099	5.51	0.433 (0.263)	16.10 (3.17)	172 (78)	55 (13)	28.91 (97.90)
10th (B3L) Gear									
127.19 (94.84)	13436 (59.77)	3.55 (5.71)	2093	5.34	0.438 (0.266)	15.93 (3.14)	182 (83)	56 (13)	28.91 (97.90)
11th (A4L) Gear									
129.18 (96.33)	11609 (51.64)	4.17 (6.72)	2096	4.33	0.432 (0.262)	16.16 (3.18)	175 (79)	55 (13)	28.92 (97.93)
12th (C3L) Gear									
127.04 (94.73)	11214 (49.88)	4.25 (6.84)	2096	3.99	0.434 (0.264)	16.05 (3.16)	173 (78)	54 (12)	28.89 (97.83)
13th (A1H) Gear									
128.07 (95.50)	10249 (45.59)	4.69 (7.54)	2093	3.64	0.431 (0.262)	16.18 (3.19)	171 (77)	52 (11)	28.89 (97.83)
14th (B4L) Gear									
126.83 (94.58)	9656 (42.95)	4.93 (7.93)	2094	3.47	0.433 (0.263)	16.11 (3.17)	183 (84)	54 (12)	28.89 (97.83)
15th (D3L) Gear									
126.88 (94.62)	9513 (42.32)	5.00 (8.05)	2093	3.38	0.433 (0.263)	16.10 (3.17)	195 (91)	54 (12)	28.89 (97.83)
16th (B1H) Gear									
129.04 (96.23)	8756 (38.95)	5.53 (8.89)	2099	3.21	0.430 (0.261)	16.23 (3.20)	183 (84)	54 (12)	28.89 (97.83)
17th (C4L) Gear									
124.13 (92.56)	7949 (35.36)	5.86 (9.42)	2096	2.95	0.438 (0.267)	15.90 (3.13)	184 (84)	54 (12)	28.89 (97.83)
18th (C1H) Gear									
126.70 (94.48)	7285 (32.40)	6.52 (10.50)	2087	2.59	0.435 (0.265)	16.03 (3.16)	180 (82)	54 (12)	28.89 (97.83)
19th (D4L) Gear									
123.87 (92.37)	6742 (29.99)	6.89 (11.09)	2097	2.50	0.446 (0.272)	15.62 (3.08)	173 (78)	55 (13)	28.89 (97.83)
20th (A2H) Gear									
127.25 (94.89)	6622 (29.46)	7.21 (11.60)	2093	2.42	0.431 (0.262)	16.19 (3.19)	192 (89)	56 (13)	28.90 (97.87)
21st (D1H) Gear									
126.69 (94.47)	6169 (27.44)	7.70 (12.39)	2096	2.33	0.437 (0.266)	15.97 (3.15)	184 (84)	56 (13)	28.90 (97.87)
22nd (B2H) Gear									
125.98 (93.94)	5576 (24.80)	8.47 (13.63)	2095	2.06	0.437 (0.266)	15.96 (3.14)	194 (90)	56 (13)	28.90 (97.87)

TRACTOR SOUND LEVEL WITH CAB

dB(A)

At 75% load in 12th (C3L) gear	75.0
Bystander	—

THREE POINT HITCH PERFORMANCE (OECD Static Test)

CATEGORY: III

Quick Attach: None

Maximum Force Exerted Through Whole Range: 12087 lbs (53.8 kN)

i) Opening pressure of relief valve: NA

Sustained pressure with pump stalled: 2870 psi (198 bar)

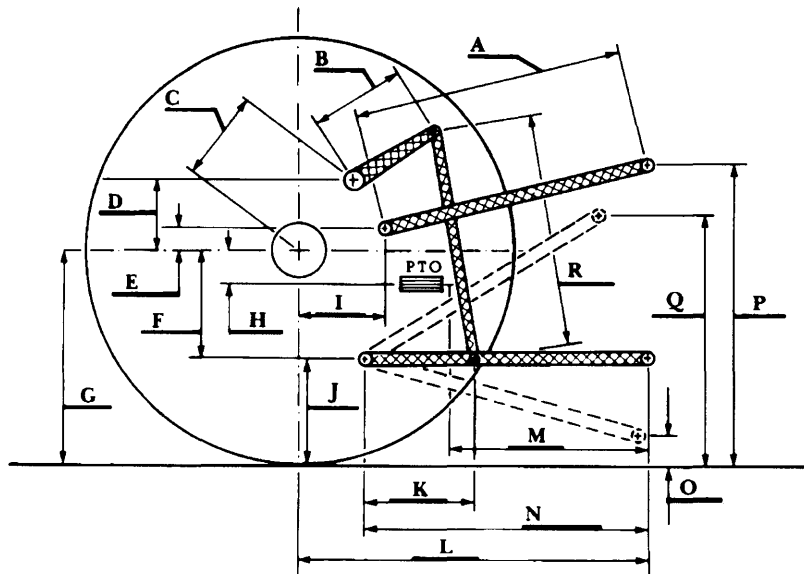
ii) Pump delivery rate at minimum pressure and rated engine speed: 31.5 GPM (119.2 l/min)

iii) Pump delivery rate at maximum hydraulic power: 26.2 GPM (99.2 l/min)

Delivery pressure: 2550 psi (176 bar)

Power: 39.0 HP (29.1 kW)

HITCH DIMENSIONS AS TESTED—NO LOAD



	inch	mm
A	30.5	775
B	14.3	362
C	18.5	470
D	17.0	432
E	9.3	237
F	11.8	300
G	35.0	889
H	3.0	76
I	16.9	428
J	23.2	589
K	23.6	600
L	47.2	1199
M	25.5	648
N	38.4	975
O	9.0	229
P	51.4	1306
Q	34.2	870
R	33.3	845



WHITE 6144 DIESEL

Agricultural Research Division
 Institute of Agriculture and Natural Resources
 University of Nebraska-Lincoln
 Darrell Nelson, Dean and Director